

**APACHE CREEK (WUI #s 65, 146-151, 166)  
COMMUNITY WILDFIRE PROTECTION PLAN  
A Supplement to the  
CATRON COUNTY  
COMMUNITY WILDFIRE PROTECTION PLAN**



**A Continuing Effort  
by and for the Citizens of Catron County, New Mexico**

---

Ed Wehrheim, Chairman, Catron County Commission  
Don Weaver, Coordinator, Catron County CWPP Core Group  
in partnership with the New Mexico State Forestry Dept. and Catron County Rural Fire Departments

Assisted by the San Francisco Soil & Water Conservation District, the U.S. Forest Service, the US Bureau of Land Management, Southwest Center for Resource Analysis at Western New Mexico University, University of New Mexico, and Northern Arizona University School of Forestry.

## ACKNOWLEDGEMENT

This supplement to the Catron County Wildfire Protection Plan for the Apache Creek Wildland Urban Interface was largely made possible through the New Mexico Association of Counties Wildfire Risk Reduction Program. This grant is financed by the Bureau of Land Management. This grant provided for writing of this plan and completion of demonstration projects. Also the cooperation in particular of the Gila National Forest, New Mexico State Forestry, Catron County Commission and Apache Volunteer Fire Dept. was invaluable and much appreciated. Without exception all personnel in all these agencies and organizations were most cooperative and helpful.



<b>SIGNATURES</b>
-------------------

**DECLARATION OF AGREEMENT AND CONCURRENCE**

The following partners in the development of this Community Wildfire Protection Plan have reviewed and do mutually agree or concur with its contents:

---

Ed Wehrheim, Chairman, Catron County Commission	Date
---	------

---

Doug Boykin, Forester, New Mexico State Forestry Department	Date
---	------

---

Jim Wasserburger, Fire Chief, C.A.C.A. Volunteer Fire Department	Date
--	------

---

Zina Day-McGuire, Catron County Wildfire Prevention Coordinator and Fire Chief Wild Horse Volunteer Fire Department	Date
--	------

---

**Concurrence**

---

Rogers Steed, District Ranger, Apache Creek	Date
---	------

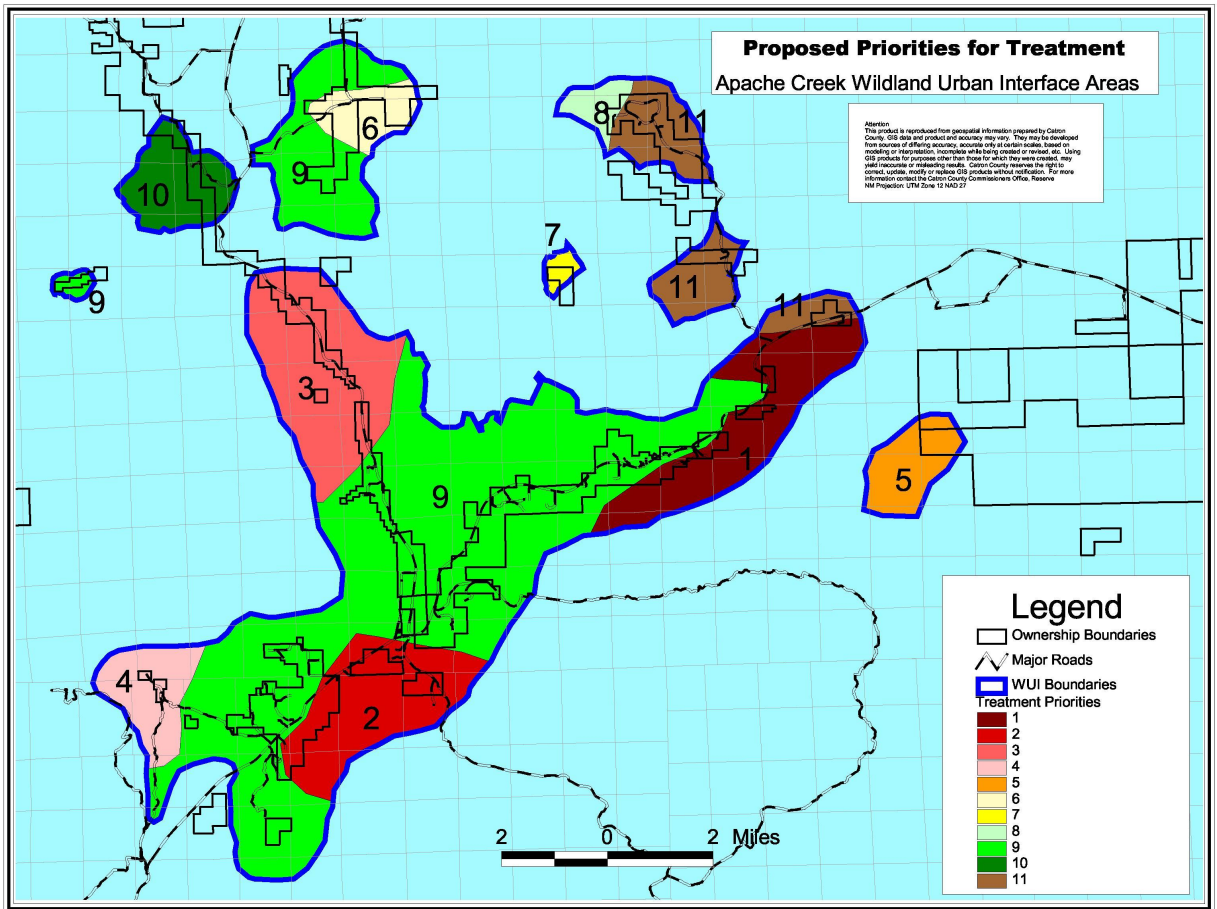
---

Janice Stevenson, District Ranger, Quemado	Date
--	------

---

## TABLE OF CONTENTS

Acknowledgement.....	2
Signatures .....	3
DECLARATION OF AGREEMENT AND CONCURRENCE .....	3
Table of Contents .....	4
Executive Summary .....	5
Introduction.....	6
Overview:.....	6
Future Desired Condition and Relevant Fire Authorities .....	6
Relevant Authorities .....	6
Planning Area Boundaries .....	7
Planning Process .....	7
History .....	7
Collaboration.....	7
Methodology .....	7
Public Involvement.....	8
Community Profile .....	9
WUI Description .....	9
Planning for the Future.....	14
Recap Of Objectives .....	14
Implementation/Mitigation .....	14
Appendix Volume 2 .....	19
Table: Vegetation Types.....	20
Table: Community/Subdivision Ratings of Various Attributes by Fire Dept.....	22
Table: C.A.C.A. Volunteer Fire Department Equipment Inventory .....	23
Subject List from Table Contents for Catron County CWPP .....	24
Subject List from Table Contents for Catron County CWPP, Appendix Volume 2.....	25
Appendix Volume 3 .....	26
Map 1: Steepness of Slopes .....	27
Map 2: Vegetative Type Groups .....	28
Map 3: Land Ownership .....	29
Map 4: Threatened and Endangered Species .....	30
Map 5: FireThreat.....	31
Map 6: Fire Regime Condition Class .....	32
Map 7: FRCC Abundance Class .....	33
Map 8: FRCC Risk of Vegetative Condition Not Being Sustainable .....	34
Map 9: Machine Accessible Areas.....	35
Map 10: Final Treatment Priorities .....	36
Map 11: WUI Relative to HUC 6 Watersheds.....	37
Map 12: Treatment Priority by HUC 6 Watershed .....	38
Map 13: Regap Vegetation Types.....	39



..... 40

Map 14: Proposed Mitigation Priorities ..... 40

**EXECUTIVE SUMMARY**

The Apache Creek Community Wildfire Protection Plan (CWPP) is a supplement to the Catron County Community Wildfire Protection Plan. The County CWPP completed in October, 2005 assesses the wildfire threat and hazardous fuels treatment priorities on a landscape scale. The Apache Creek CWPP uses the data and findings of the County CWPP to assess the wildfire threat and treatment priorities specific to the Apache Creek Wildland Urban Interface (WUI #s 146-151, 165, 166). Mitigation which will reduce the threat of wildfire damage to property, life and the land are proposed. Project scale data from the County CWPP and other sources is presented to aid in planning and design of the proposed projects.

## **INTRODUCTION**

### **Overview:**

The Apache Creek WUI #s 146-151, 165, 166 includes 48,132 acres, 76% of which is in the Apache Creek and Tularosa valleys in WUI 166. The remaining WUIs are in side drainages to these valleys. Gila National Forest and private land is included within the boundaries. There are 237 E911 address sites recorded for this WUI which includes private homes, businesses, miscellaneous buildings and a US Forest Service historic administrative site with old cabin. Because of the higher concentration of homes and businesses and the density of some of the surrounding ponderosa pine and pinyon/juniper, the largest WUI, #166, rated 11th in priority for treatment out of the 196 WUI areas in the County. The other seven WUI areas in this plan rated 54th, 42th, 22th, 47th, 25th, 21th and 38th respectively.

The County CWPP contains a thorough presentation of how determinations of values at risk, risk of occurrence and fire threat were used to locate the areas and values most at risk from catastrophic wildfire in the County and to prioritize treatment needs. Please refer to the County CWPP for more information. It is not the intent of this plan to duplicate the County CWPP. The general outline of the County CWPP is followed in this CWPP.

### **Goals And Objectives**

As a supplement to the County CWPP, the main objective of the Apache Creek CWPP is to propose work needed to reduce and mitigate fire threat. To accomplish this objective this supplement continues the collaboration started in the County CWPP, coordinating the needed work with past efforts, the various land owners and other interest.

### **Future Desired Condition and Relevant Fire Authorities**

The desired condition for WUI areas as stated in the County CWPP is obtainable: "The desired condition for WUI areas is a fire safe environment around protected improvements that will provide "defensible space" for firefighters in the event of a wildfire in the surrounding area". There is some high fuel loading, but not as many complicating factors such as high elevation forests on steep slopes, Wilderness and Roadless Study areas and environmental concerns such as the Mexican spotted owl as there are in some of the WUI areas in the County. There is an excellent opportunity to obtain the desired condition for this WUI area.

### **Relevant Authorities**

No supplement to the County CWPP necessary.

## **Planning Area Boundaries**

No modifications were made in the WUI boundaries as established in the County CWPP.

# **PLANNING PROCESS**

## **History**

Large pre-historic ruins are located along Apache Creek and the Tularosa River with one particularly large pueblo ruin located at the junction of these two streams. Fort Tularosa located in the NE corner of WUI 166 on the Tularosa River was used for a short time in the late 1800's. A historic log Ranger Station is located on the Tularosa southwest of the community of Cruzville. The first settlers were mostly ranchers. Logging in the surrounding Gila National Forest supported at least 1 large sawmill now gone at the Apache Creek/Tularosa junction. Through the years the areas along these two main streams have become loosely defined as the communities of Cruzville, Apache Creek and Aragon. Cattle ranching and logging has been the main stay of these communities in past years but environmental restrictions and lawsuits has greatly reduced activities in those two industries.

Except for the steeper inaccessible areas, all ponderosa pine areas on the National Forest in and surrounding the Apache Creek WUIs has been commercially harvested several times. There have been numerous non-commercial treatments also such as pre-commercial thinning and prescribed burns. Fire wood cutting has greatly altered the age class and species composition in accessible to wood cutter areas.

## **Collaboration**

Besides the meetings held around the County and one meeting at Community Center and Senior Center for the County Wildfire Protection Plan, the Reserve Ranger District of the Gila National Forest has had extensive contact with the private land owners concerning treatment needs and proposed projects. There have been numerous meetings with Reserve Ranger District to coordinate the writing of this plan. Comments from all these meetings and contacts were incorporated in a rough draft. The rough draft was presented at a public meeting on August 2, 2007 at the Apache Creek Firehouse. Comments on the rough draft were incorporated in a draft which was sent out for a last review by the involved agencies before the final was signed.

## **Methodology**

Most of the data used for this CWPP is from the County CWPP and was scaled to fit these WUIs. Although the County CWPP was a landscape scale analysis, much of the data originated at a scale that fits the purpose of this CWPP (30x30 meter satellite imagery for example).

### **Public Involvement**

See Collaboration section above.



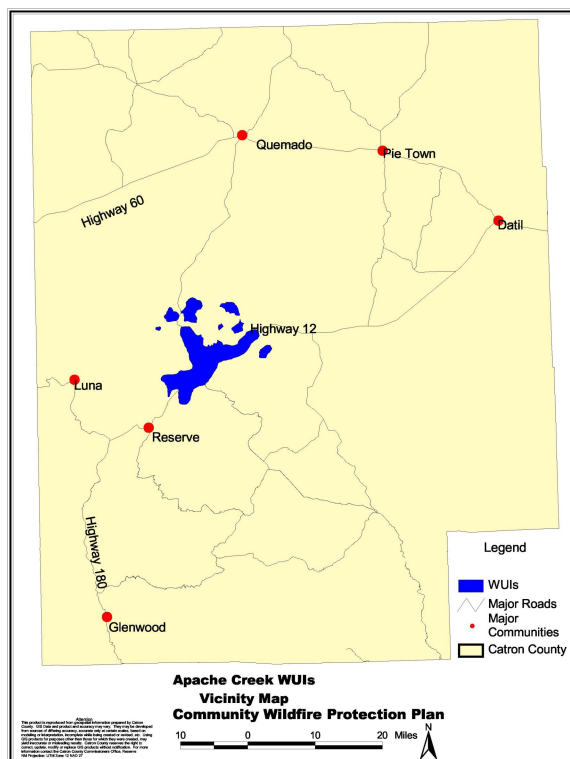
## COMMUNITY PROFILE

### WUI Description

The Apache Creek WUI areas include the communities of Apache Creek, Cruzville, and Aragon. The Village of Reserve lies about 12 miles to the southwest of these WUIs. Access to the area is best over Federal Highway 180 and State Highways 12 and 32. Most of the land is National Forest (79%). The WUI is mostly within the Reserve Ranger District but includes a small amount of the Quemado Ranger district (all on the Gila NF).

Elevation ranges from 6160 ft. on the east side to 8960 ft. on the west side. The area straddles the transition zone between ponderosa pine and pinyon/juniper types. As can be seen in the table below over 7,000 acres of the forested area is in a "closed" canopy condition. It is believed that the amount of ponderosa pine is over estimated and the amount of grassland is under estimated by the re-regap satellite data. Some of the sparse tree/grassland areas are classed as ponderosa pine in regap whereas normally they would be classed

as grassland, especially from the standpoint of expected fire behavior. See maps for Forest Type, Structural Stage and Regap Cover Types.



**Apache Creek WUI (#s 146-151,165,166)**  
**Machine Accessibility by Ownership, Cover Type and Density**

WUI Number	Machine Accessible	Owner	Acres by Cover Type and Density							Grass/ Shrub Other	Total
			Ponderosa Pine Open	Ponderosa Pine Closed	Mixed Conifer Open	Mixed Conifer Closed	Pinyon Juniper Open	Pinyon Juniper Closed			
146	No	NF	158	148	0	0	106	15	61	488	
146	No	Pvt	2	1	0	0	1	0	0	4	
146	Yes	NF	226	11	0	0	144	12	171	565	
146	Yes	Pvt	30	5	0	0	34	6	107	182	
		Totals	416	165	0	0	284	33	340	1,239	
147	No	NF	1	1	0	0	1	0	0	3	
147	No	Pvt	1	0	0	0	1	0	0	1	
147	Yes	NF	460	55	0	0	371	53	334	1,274	
147	Yes	Pvt	199	95	0	0	176	18	376	864	
		Totals	661	151	0	0	549	71	710	2,143	
148	No	NF	167	85	2	6	113	12	2	386	
148	No	Pvt	18	14	0	0	7	4	0	42	
148	Yes	NF	1966	452	1	1	491	41	45	2,998	
148	Yes	Pvt	532	377	0	0	96	35	69	1,110	
		Totals	2,683	927	3	7	707	92	117	4,537	
149	No	NF	5	1	0	0	21	4	1	32	
149	No	Pvt	25	8	3	2	24	2	1	64	
149	Yes	NF	604	93	0	0	737	77	14	1,525	
149	Yes	Pvt	108	58	0	0	118	33	36	354	
		Totals	743	159	4	2	900	115	52	1,975	
150	No	NF	30	35	0	0	11	2	0	78	
150	No	Pvt	4	4	0	0	2	0	0	10	
150	Yes	NF	56	23	0	0	22	2	0	104	
150	Yes	Pvt	33	27	0	0	14	2	0	75	
		Totals	123	89	0	0	49	7	0	268	
151	No	NF	0	0	0	0	0	0	0	1	
151	Yes	NF	106	5	0	0	23	1	0	135	
151	Yes	Pvt	60	12	0	0	4	0	0	77	
		Totals	166	18	0	0	27	1	0	212	
165	No	NF	53	223	1	189	18	2	79	564	
165	No	Pvt	1	0	0	0	1	0	0	2	
165	Yes	BLM	93	17	0	0	4	1	0	115	
165	Yes	NF	182	356	0	5	38	7	4	593	
165	Yes	Pvt	166	47	0	0	26	3	0	243	
		Totals	496	643	1	195	87	13	83	1,518	
166	No	NF	2,435	1,192	39	241	4,593	313	50	8,863	
166	No	Pvt	93	62	3	10	300	33	3	504	
166	Yes	NF	3451	906	7	17	14752	936	754	20,823	
166	Yes	Pvt	548	242	1	2	3,556	645	1,511	6,505	
		Totals	6,527	2,402	49	270	23,200	1,927	2,319	36,694	
All	No	NF	2,850	1,684	43	436	4,862	348	193	10,416	
All	No	Pvt	144	88	5	12	336	39	4	628	
All	Yes	BLM	93	17	0	0	4	1	0	115	
All	Yes	NF	7,052	1,902	8	24	16,578	1,129	1,324	28,017	
All	Yes	Pvt	1,677	862	1	2	4,024	743	2,100	9,409	
		Totals	8,967	4,554	58	474	25,804	2,259	3,620	48,585	

**Closed Density Summary**

Machine Accessible	Closed
no	2,607
yes	4,680
Total	7,287

Fire Regime Condition Class (FRCC) within the WUI boundary is 79% class 1, 17% class 2 and 2% class 3. This means that about 19% of the WUI is in a moderately dense to dense existing condition of the vegetation. More information on FRCC can be found in the County CWPP. Briefly, fire regime condition class is a classification of the amount of departure from the natural regime. The three classes for FRCC are:

1. Low, class 1,  $\leq 33\%$  departure
2. Moderate, class 2,  $>33\%$  to  $66\%$  departure
3. High, class 3,  $>66\%$  departure

FRCC mapping of the abundance classes shows that about 3/4 is rated similar.

Abundance class is a slightly different view of FRCC and is the amount of a vegetation-fuel class compared to the reference condition amount, classified into rare, similar, moderate and high. The management implications are recruit more of the rare, maintain the existing rare and similar and reduce the moderate and high until theoretically all is "similar".

1. Rare,  $< -25\%$  difference
2. Similar,  $> -25\%$  and  $< +25\%$  difference
3. Moderate,  $\geq +25\%$  and  $\leq +75\%$  difference
4. High,  $> +75\%$  difference

FRCC mapping of the risk classes shows about 3/4 of the area in low risk and about 20% in moderate and high risk. The risk of a vegetative condition not being sustainable is shown by risk class which is an index based on the difference of vegetation-fuel class amount from the reference amount. Classified into low, moderate and high, it indicates the level of key ecosystem component risk of sustainability from unplanned disturbances, such as wildfire. The management implications are to reduce the amount of high and moderate risk to sustainability and maintain the low risk areas.

1. High,  $< -75\%$  or  $> +75\%$  difference
2. Moderate,  $-25\%$  to  $-75\%$  or  $+25\%$  to  $+75\%$  difference
3. Low,  $-25\%$  to  $+25\%$  difference

**Apache Creek WUI #s 146-151, 165, 166  
Fire Regime Condition Class Mapping Summary**

	Class	Acres	% of Total	Total Check
<b>FRCC</b>	0(null)	869	2	48,281
	1	37,911	79	
	2	8,396	17	
	3	1,104	2	
			100	
<b>Risk</b>	Null	869	2	48,281
	Low	37,744	78	
	Moderate	6,577	14	
	High	3,091	6	
			100	
<b>Abundance</b>	Null	869	2	48,281
	Rare	3,194	7	
	Similar	37,744	78	
	Moderate	3,456	7	
	High	3,018	6	
			100	

In the County CWPP, slope steepness was mapped in 4 classes. The area of each slope class in this WUI is as shown in the following table. Also see map Slope % Classes.

**Apache Creek WUI  
Slope Classes**

Slope%	Acres
0-10	20041
11-20	11773
21-35	11997
35+	4770

48582

Fire threat was modeled and mapped in the County CWPP to rate the fire threat within each WUI area as compared to the fire threat in other WUI areas. The Apache Creek WUIs are rated mostly high and moderate fire threat with high being mostly on the slopes and ridges, moderate being mostly in the valleys and some low being in the grassland flats on the east side. See map for Fire Threat.

Past occurrence of lighting and man-caused fires was mapped and considered in determining treatment priorities in the County CWPP. These WUI areas are mostly moderate and low with a small amount of high combined human/lightning risk. See Map 6, "Risk of Human and Lightning Caused Wildfire" in the County CWPP.

Treatment priority was modeled and mapped in the County CWPP to rate the treatment priority within each WUI area as compared to the treatment priorities in other WUI areas and also to show a weighted average of the treatment priority ratings within each WUI. The weighted average places the largest WUI area, #166, as 11th in priority for treatment out of the 196 WUI areas in the County. The other seven WUI areas in this plan rated

54th, 42th, 22th, 47th, 25th, 21th and 38th respectively. The Apache Creek WUIs are moderate and high priority for treatment as compared to the other 196 WUI areas in the County. See map Treatment Priorities.

There are other considerations on determining treatment priorities not considered at the County CWPP landscape scale. One of these considerations is proximity to endangered structures. There is a need for some balance between treatment priorities as determined in the County CWPP and other concerns about priority such as proximity. In determining the priority of proposed projects in this plan, the priority generally decreases with increased distance from the value at risk.

There are two Threatened and Endangered species in this WUI (as per County CWPP), bald eagle stream habitat and several Leopard frog sites. Mexican spotted owl critical habitat and management areas are to the south of the WUI. Threatened and Endangered species was considered as part of the other values at risk in the modeling of treatment priorities. The NEPA process will need to deal with the restrictions, guidelines and protection of those species. It is not within the scope of this plan to resolve the conflict between the actions needed to return the vegetation to a more natural condition and the restrictions meant to protect species by preserving the existing condition.

Recreational use, after homes and businesses, is by far the most important human use of this area and is an important contributor to the economy of the County. Recreational use was rated over the County in the County CWPP. Recreational Use was rated above average for all but the interior inaccessible areas for 7 of the 8 WUIs. WUI 165 is rated as low. See map Recreational Use for the ratings in this area as compared to the remainder of the County.

There are presently 237 addresses recorded in the County E911 address GIS records. WUI 166 contains 92% of these addresses. All structures are located on about 10,000 acres of private land except for the old Tularosa Ranger Station Cabin. Safe evacuation in the event of a fast moving wildfire burning under high or extreme fire danger would be possible with proper planning and implementation. In the largest WUI area, #166, ingress and egress problems are minor or non-existent. In the six WUI areas north of 166, there are some "dead-end road" and no "escape zone" situations. See appendix table "Community Subdivision Ratings of Various Attributes by Fire Dept."

Apache Creek campground is an undeveloped USFS popular camping area at the Apache Creek/Tularosa junction. The site was the location of a CCC camp.

The area in these WUIs includes parts of 8 HUC 6 watersheds with a portion of one watershed having a State 303d listed water body.

Fire protection services are supplied by the Cruzville/Apache Creek/Aragon Fire Dept. and the Forest Service Reserve and Quemado Ranger Districts with Reserve and Rancho Grande Fire Dept.s providing automatic mutual aid on all structure fires. Defensible space for most of the structures in the 8 WUIs already exists and can be improved upon

with some reduction in fuels. Water sources are excellent to fair. The communities of Apache Creek and Aragon have large water supply tanks for fire use. There have been no structure vulnerability surveys completed in these WUIs. See appendix table “Community Subdivision Ratings of Various Attributes by Fire Dept.”. Also see appendix table “Fire Dept. Inventory”. Wildland firefighting safety and numbers of volunteer members are concerns. Availability of Federal and State resources depend on the severity of the fire season, time of year and priorities (Forest, Regional and National).

## **PLANNING FOR THE FUTURE**

### **Recap Of Objectives**

The objectives of the Catron County Community Wildfire Protection Plan were:

- Create a county-wide, landscape level plan
- Locate the highest areas at risk from catastrophic wildfire in the County
- Prioritize these areas based on the values of the citizens of the County
- Suggest mitigation actions for the protection of life, property, critical infrastructure and wildlands in the County, based on
  - Optimum treatment efficiency
  - Lowest treatment cost
  - Highest benefit to local economy
- Follow-through to on-the-ground level by developing local Wildfire Protection Plans for implementation of objectives of this County-wide Plan

The objective of the Apache Creek Community Wildfire Protection Plan is to propose work needed to reduce and mitigate fire threat.

### **Implementation/Mitigation**

Several mitigations are proposed to reduce and mitigate fire threat within the Apache Creek WUI and are summarized in the following 2 tables. Mitigation needs are listed by priority in the first table and are as shown on Map 14: Proposed Mitigation Priorities in Appendix Volume 3. Proposed mitigation projects are listed in the second table.

## Mitigation Needs by Priority for the Apache Creek WUIs (#s 65, 146-151, 166)

Last update: 3/27/07 DRW

### MITIGATION PRIORITIES

No.	Mitigation Name	Owner	Description of Needs
<b>Fuel Hazard Reduction</b>			
1	Aragon	PVT	thin, pile/burn, chip, prescribed fire
1	Aragon	NF	thin, pile/burn, chip, prescribed fire
2	CCC	PVT	some thin, pile/burn, chip and prescribed fire, mostly open or treated
2	CCC	NF	prescribed fire
3	Apache Creek	PVT	thin, pile/burn, chip, prescribed fire
3	Apache Creek	NF	some thin, pile/burn, chip, but mostly prescribed fire, generally steep and rough
4	Cross V	PVT	perhaps small amount of clean-up and prescribed burn
4	Cross V	NF	some thin, pile/burn, chip, but mostly prescribed fire
5	Damian Sprg	PVT	thin, pile/burn, chip, prescribed fire in spots
5	Damian Sprg	NF	thin, pile/burn, chip, prescribed fire, protect historic cabin
6	Jewitt	PVT	none, mostly grassland
6	Jewitt	NF	none, mostly grassland
7	Negrito Springs	PVT	thin, pile/burn, chip, prescribed fire
7	Negrito Springs	NF	thin, pile/burn, chip, prescribed fire
8	N Sand Flat	PVT	none
8	N Sand Flat	NF	prescribed fire
9	Tularosa	PVT	small amount of thin, pile/burn
9	Tularosa	NF	mostly prescribed fire if anything
10	HardCastle Cyn	PVT	none
10	HardCastle Cyn	NF	mostly prescribed fire, steep rough ground
11	Sand Flat	PVT	none
11	Sand Flat	NF	mostly prescribed fire if anything
11	Lower Sand Flat (2)	PVT	mostly open grass, no treatment
11	Lower Sand Flat (2)	NF	mostly prescribed fire if anything
<b>Fire Suppression/Prevention</b>			
1	Pvt. Owner Education		CWPP, Firewise, demonstration project
2	Fire Department		Potential substation at Sand Flat and Cruzville

## Project Accomplishments for the Apache Creek WUIs (#s 65, 146-151, 166)

Last update: 3/27/2007

### PROJECTS

Mitigation Priorities Included	Name or Description	Status and Remarks	Plan Acres	Accomplishment			
				CY	Fire Acres	CY	Other Acres
<b>Fuel Hazard Reduction Projects</b>							
1,9	Aragon South	PVT, thin, pile/burn/chip or remove slash south, east, west of Aragon(VFD, County, State coord)	80				
1	Aragon	NF, thin, pile/burn/chip or removed slash, south, northeast of Aragon (Reserve RD)				06	
1	Aragon	NF, prescribed fire south of Aragon (Reserve RD)					
2	CCC	PVT, possibly small amount of thin, pile/burn/chip or remove slash (VFD, County, State coord)	5				
2	CCC	prescribed fire (Reserve RD)					
3	Upper Apache Creek	small amount of thin, remove slash on Dorman place (VFD, County, State coord)	5				
3	Apache Crk Camp	small amount of thin, remove slash at mouth of Lee Russel Canyon, (VFD, County, State coord)	5				
3	Lee Russel Canyon	Thin, pile/burn/chip or remove slash, NF, SW of buildings on Camp PVT (Quemado RD)	5				
3	Kerr Canyon PVT	thin, pile/burn/chip or remove slash, PVT (VFD, County, State coord)	35				
3	Kerr Canyon NF	thin, pile/burn/chip or remove slash around PVT, (Quemado RD)	40				
3	Mid Apache Crk PVT	PVT, thin, pile/burn/chip or remove slash upper end of PVT and at Sawmill canyon (VFD, County, State coord)	30				
3	Mid Apache Crk NF	thin, pile/burn/chip or remove slash around PVT at mount of Sawmill Canyon (Reserve RD)	10				
4	Cross V PVT	check need for any clean up on PVT (VFD, County, State coord)	5				
4	Cross V West	thin, pile/burn/chip or remove slash west of PVT (Reserve RD)	300				
5	Damian Sprg PVT	Survey needed, status is rapidly changing, may need to expand WUI bndy depending on development of PVT (VFD, County, State coord)					
5	Damian Sprg. NF	also some BLM, Survey needed, status is rapidly changing, may need to expand WUI bndy depending on development of PVT. (Reserve RD)					
5	Damian Sprg Cabin	NF, survey protection needs (Reserve RD)					



7	Negrito Springs PVT	thin, pile/burn/chip or remove slash, PVT (VFD, County, State coord)	20				
7	Negrito Springs NF	thin, pile/burn/chip or remove slash around PVT, (Quemado RD)	30				
9	Tularosa PVT	thin, pile/burn/chip or remove slash, PVT (VFD, County, State coord)	5				
9	Tularosa NF	Prescribed fire (Quemado and Reserve RD)					
10	Hardcastle NF	Possibly prescribed fire, but steep and very rough (Quemado RD)					
<b>Fire Suppression/ Prevention Projects</b>			<b>Acres</b>	<b>Year Completed</b>			
all	Pvt. Owner Education	CWPP, Firewise, demonstration projects, field trips, mailings ongoing, (VFD, County, State coord)	NA				
all	Slash Disposal	Establish a slash disposal site	NA				
all	Street Signs	Need street signs on every exit off of main arteries and then on other roads to help with evacuation and emergency services.	NA				

The above priorities are subject to change for numerous reasons such as funding limitations, kind of funding, fire use and wildfire. The above table will be updated as needed to reflect current priorities and proposals. The proposed mitigation may be implemented in stages, split up, or combined to form projects either entirely or partly within the WUI.

Funding for the above proposed mitigation will be coordinated between the Forest Service, County and State Forestry.

**APACHE CREEK  
COMMUNITY WILDFIRE PROTECTION PLAN**

**APPENDIX VOLUME 2**

**Data**

**Supplement to the  
CATRON COUNTY  
COMMUNITY WILDFIRE PROTECTION PLAN**

**Table: Vegetation Types**

**Apache Creek WUI**

**CWPP Vegetation Types/Reference Conditions Crosswalk**

**Reference Condition Composition per Cover Type**

Cover Type Values						PNV/GIS Code	Precent Composition			Acres in County
Regap class	CWPP class	PNVG	Cover Type	0-24 Value	Base 3 Value		Early	Open	Closed	
22	MC	MCAN	S023	18	2.2500	340	10	80	10	14
30	MC	MCAN	S032	22	2.7500	340	10	80	10	56
32	MC	MCAN	S034	21	2.6250	340	10	80	10	449
28	MC	SPFI7	S030	16	2.0000	360	25	30	45	13
Mixed Conifer Totals and Weighted Average=							10.36	78.79	10.85	532
92	PJ	MAME	S112	14	1.7500	310	5	75	20	335
36	PJ	PLME2	S039	13	1.6250	322	2	67	31	27,640
64	PJ	PLME2	S075	9	1.1250	322	2	67	31	66
41	PJ	PPIN7*	S046	11	1.3750	120	20	10	70	22
Pinyon/Juniper Totals and Weighted Average=							2.05	67.05	30.90	28,063
33	PP	MAME	S035	24	3.0000	310	5	75	20	115
34	PP	PPIN7	S036	23	2.8750	330	15	80	5	16,254
Ponderosa Pine Totals and Weighted Average=							14.93	79.96	5.11	16,369
5	O	ROCK	S006	0	0.0000					161
9	O	ROCK	S010	0	0.0000					6
51	G/S	CHAP5	S057	3	0.3750					92
67	G/S	PLME2	S079	5	0.6250					1,076
71	G/S	MGRA1	S085	2	0.2500					105
76	G/S	PLME2	S090	3	0.3750					1,332
79	G/S	RWSL	S093	8	1.0000					63
112	O	DVLP	N22	0	0.0000					332
114	O	AGRI	N80	0	0.0000					371
116	O	BURN	D02	0	0.0000					83

\*listed under PPIN7 in one NF crosswalk and under CHAP5 in another. Type is definitely more a PJ woodland type than a Ponderosa Pine type.

The above table summarizes information about the regap cover types, relative fire threat and structural stage reference conditions. The column CWPP class shows the grouping of the regap classes into the groups: Ponderosa pine, Mixed Conifer, Pinyon/Juniper, Grass/Shrub and Other. Potential natural vegetation group (PNVG), Cover Type and GIS Code are designators used in various reference information. The 0-24 Value is a relative fire threat value assigned in the County CWPP analysis, i.e. the higher the value the higher the fire threat. The Base 3 Value is the 0-24 Value divided by 8. The

reference condition is shown in the Percent Composition columns. Weighted average percent compositions are shown for each Cover Type group (except for the Other group). The weighted average is useful since there is most often an intermingled mix of regap classes. The “reference” condition is just that. It is one of the sources of information about the condition necessary for reduction of fire threat and sustainable ecological health.

**Table: Community/Subdivision Ratings of Various Attributes by Fire Dept.**

			Rate for Community/Subdivisions Only					Rate Both	Rate for Fire Dept. Only			
Data Entry Units= (See Attribute Definitions)			Protection Need					miles to nearest	Yes/No	1-10	year	gallons
Fire Dept.	Community or Subdivision	WUI ID	Evac. Routes Safety Zones	Vulnerability				Fire Station Distance	Evac. Plan/ Struct. Eval.	Applicable ISO rating	Vehicle Avg. Age	Water on Wheels
				R	C	D	Sum					
			None	0-10	0-10	0-10	Sum					
			Low									
			Mod									
			High									
C.A.C.A.	Apache Creek	5s17w28	Mod				0	4.2	N/N	6		
C.A.C.A.	Apache Park	5s17w28	Low				0	2.8	N/N	6		
C.A.C.A.	Aragon Townsite	5s17w28	None				0	0.5	N/N	6		
C.A.C.A.	Cottonwood Park	5s17w28	Low				0	1.5	N/N	6		
C.A.C.A.	Cruzville	5s17w28	Low				0	3.1	N/N	6		
C.A.C.A.	Elk Springs	8s15w33	Mod				0	30.3	N/N	10		
C.A.C.A.	Horse Springs	4s13w30	None				0	20.6	N/N	10		
C.A.C.A.	Lost Cabin	4s16w7	Mod				0	9.7	N/N	10		
C.A.C.A.	Mountain View Acres	5s17w28	Low				0	2.8	N/N	6		
C.A.C.A.	Sand Canyon	5s17w28	Low				0	1.5	N/N	6		
C.A.C.A.	Sand Flat	4s16w28	Mod				0	6.5	N/N	10		
C.A.C.A.										6	1983	12250

**Table: C.A.C.A. Volunteer Fire Department Equipment Inventory**

Year	Make/Model	Type	Tank	FGPM	Purpose	Drive	Feet of Hose Carried									Porta Tank
							Reel	1"	1.5+"	2.5"	3"	4"	5"	Hard Suction	Soft Suction	
1972	Dodge T80	Tender	4000	0	Structural	6x4	0	0	0	0	0	0	0	30	0	0
1981	Mack	Tender	3300	400	Struc/Wild	6x4	0	0	50	0	0	0	0	30	0	4000
1982	Chev	Pumper	750	1200	Structural	4x2	200	0	600	600	300	500	0	20	0	1000
1988	GMC	other	na	na	Special	4x2	0	0	100	100	0	0	1000	0	0	0
1989	Pierce	Pumper	1000	1500	Structural	4x2	200	0	680	600	300	500	0	20	0	2000
1989	Freight Liner	Tender	3200	400	Struc/Wild	6x4	0	0	50	50	0	0	0	25	0	4000

## **Subject List from Table Contents for Catron County CWPP**

Signatures	Vegetation Cover Type
DECLARATION OF AGREEMENT AND CONCURRENCE	Insects And Diseases
Table of Contents	Values at Risk
Preface	Structures, infrastructure
Introduction	Economic values (business, industry)
Overview:	Wildlife Habitat
Goals And Objectives	Watershed And Wetland Resources
Building together to a common goal	Fire Risk/ Risk of Occurrence
Collaborative assessment of values at risk and protection priorities	Fire Regime Condition Class
Future Desired Condition and Relevant Fire Authorities	Treatment Priorities
Desired condition	Summary of the Analysis Results
Relevant Authorities	Summary of the Analysis Results
Planning Area Boundaries	Planning for the Future
Definitions of areas	Recap Of Objectives
Planning Process	Implementation/Mitigation
History	Environmental Justice
Collaboration	Catastrophic Wildfires and Environmental Justice
Methodology	Prescription Guidelines
First Stage Public Involvement	Hazardous fuels reduction
Analysis: Design of analysis and determination of data needed	Education And Community Outreach
Collection and Preparation of Data	Additional Recommendations
Analysis Model Development	Reduce ISO
Model Validation	Current Projects And Policies
Second Stage Public Involvement	Structure Ignitability
Draft Plan	Funding
Public Comment	Project specific funding
Final Plan	Planning Summary
Community Profile	Monitoring and Evaluation
County Description	Who Will Monitor and Evaluate
Fire Threat	What will be evaluated
	Funding For Monitoring And Evaluation
	Appendix
	Endnotes



## **Subject List from Table Contents for Catron County CWPP, Appendix Volume 2**

Relevant Authorities  
Federal  
State  
County  
Village of Apache Creek  
Planning Area Boundaries  
Methodology for Establishment of Wildland Urban Interface (WUI) Boundaries  
Table - Count of E911 Addresses and Model Value per WUI  
Table: Evacuation and Communications Site Model Values per WUI

Planning Process: Table of Partners  
Methodology  
Public Involvement: Stage One  
Brochure  
Script for Public Meetings  
Analysis  
Model Development  
Flow Diagram  
GIS Data Analysis Methodology  
Fire Threat  
Table: Fuel Hazard (Fire) Threat Values Crosswalk (sort by regap class)  
Table: Acres by Regap Vegetation Data  
Table: Vegetation Types  
Risk of Occurrence  
Values at Risk  
Table: Count of Addresses and Model Value per HUC 6 Watershed

Table: Subdivision Data  
Table: Community Subdivision Ratings of Various Attributes by Fire Dept.  
Column Keys for Table Community/Subdivision Ratings by Fire Dept.

Diagram: Weighting Constants for Analysis Model  
Final Determination of Treatment Priority  
Treatment Priority Determination by WUI and HUC6 Watersheds

Assignment of Threatened and Endangered Species Values  
Table: T&E Species Values  
Assignment of Downstream Damage Values  
Assignment of Recreation Use Values  
Assignment of Water Quality Values  
Assignment of Access Values  
Machine Accessibility, Determination of Net Acres of Closed Density To Be Treated  
SW New Mexico Interagency Fire Regime Condition Class Mapping

Table: FRCC Mapping Summary  
Vegetation Species  
Insects  
Diseases  
Noxious Weeds  
Fish & Wildlife Concerns/Threatened And Endangered Species  
Cultural Resources  
Watershed And Wetland Resources  
Table: Final Priority Rating Weighted Average per WUI  
Table: Final Priority Rating Weighted Average per HUC 6 Watershed

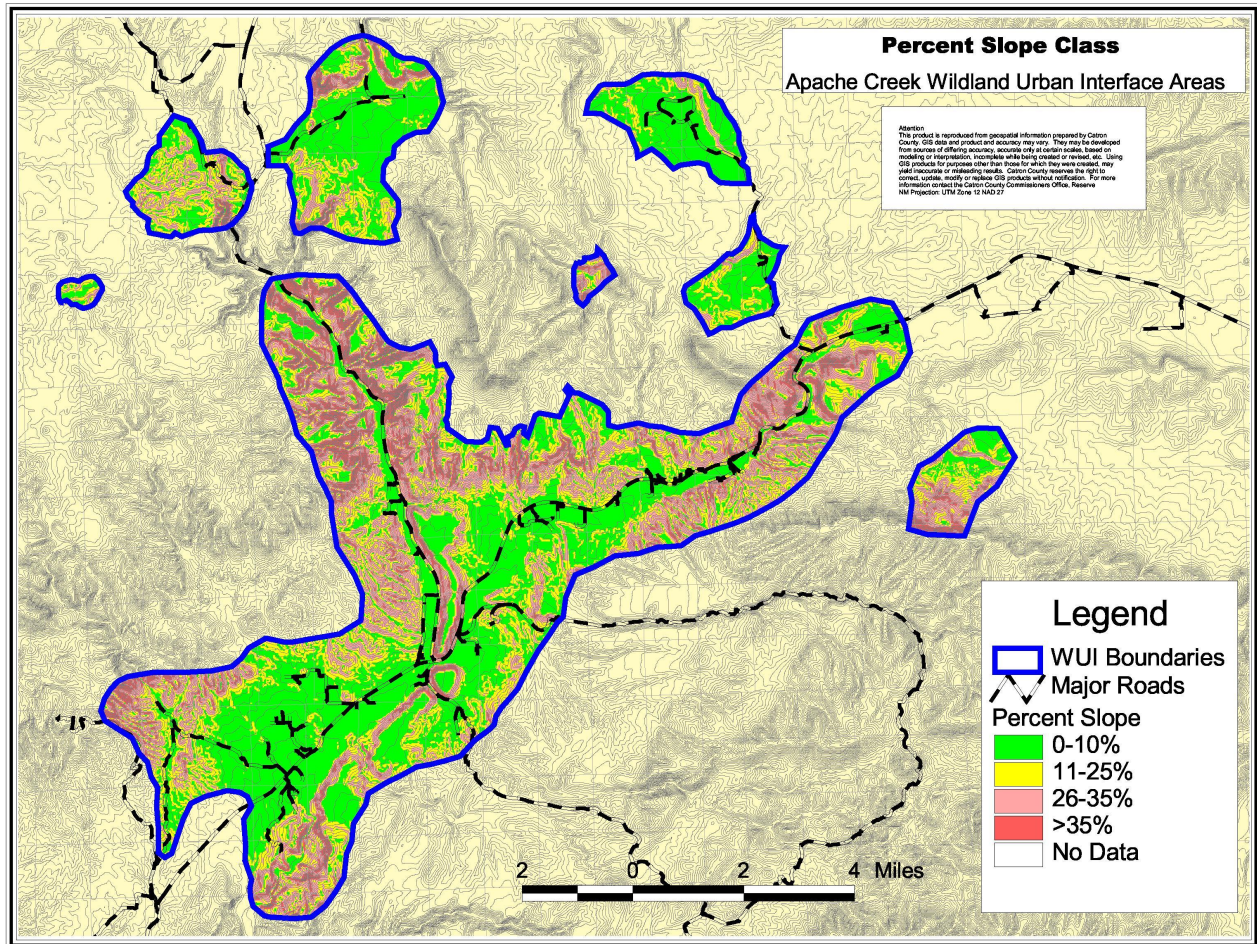
Table: Summary of Various Analysis Results  
Individual Data for Eleven Highest Priority WUI Areas  
Public Involvement: Stage Two  
Public Comments on Final Draft  
Treatment Recommendations  
Prescription Guidelines  
Stewardship Contracting  
Monitoring  
Rough Draft Monitoring and Assessment Plan (7/8/04 INA team meeting)  
Final Plan – letters of approval  
Acronym List  
Glossary  
Bibliography/References

**APACHE CREEK  
COMMUNITY WILDFIRE PROTECTION PLAN**

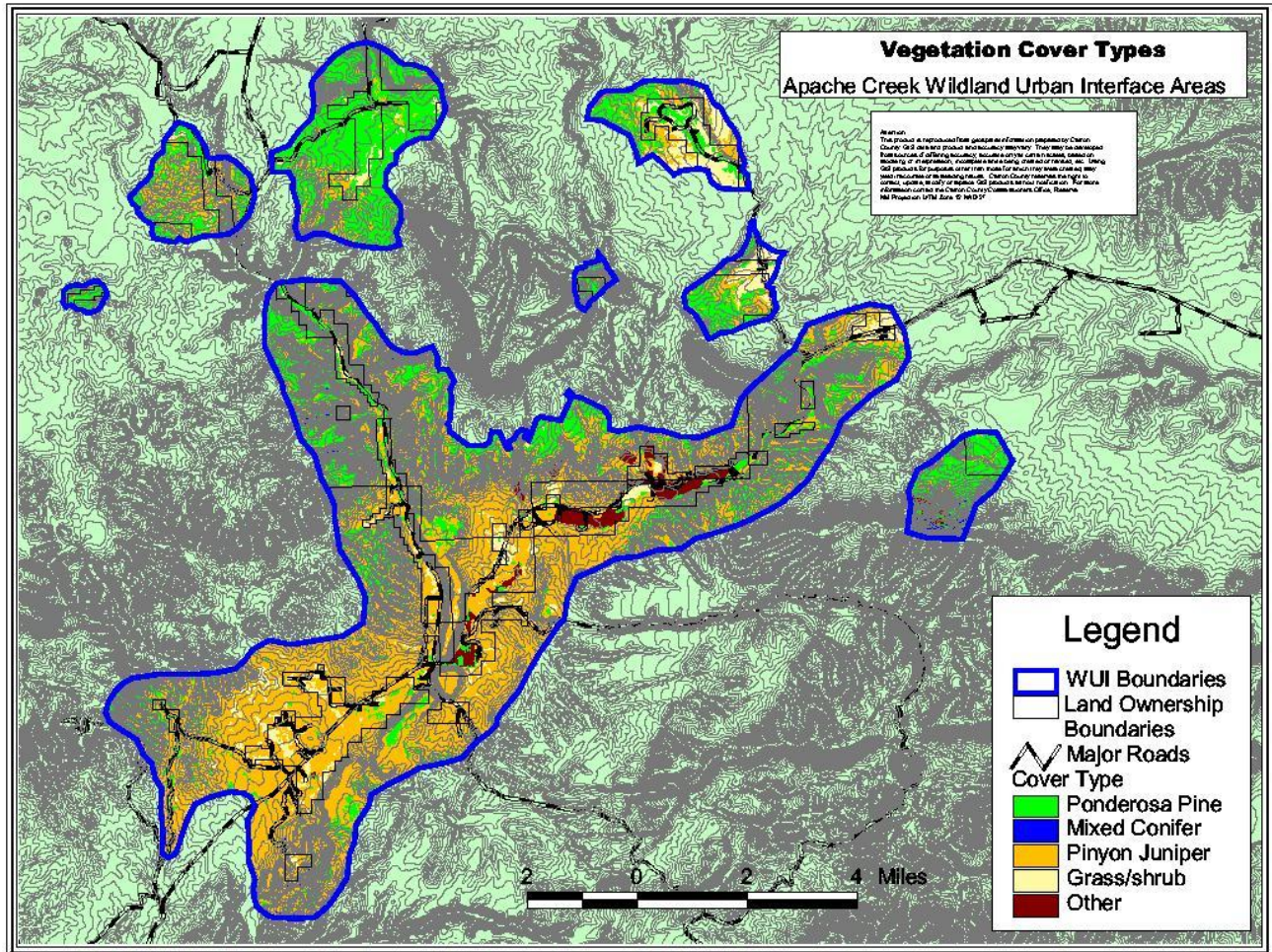
**APPENDIX VOLUME 3**

**Maps**

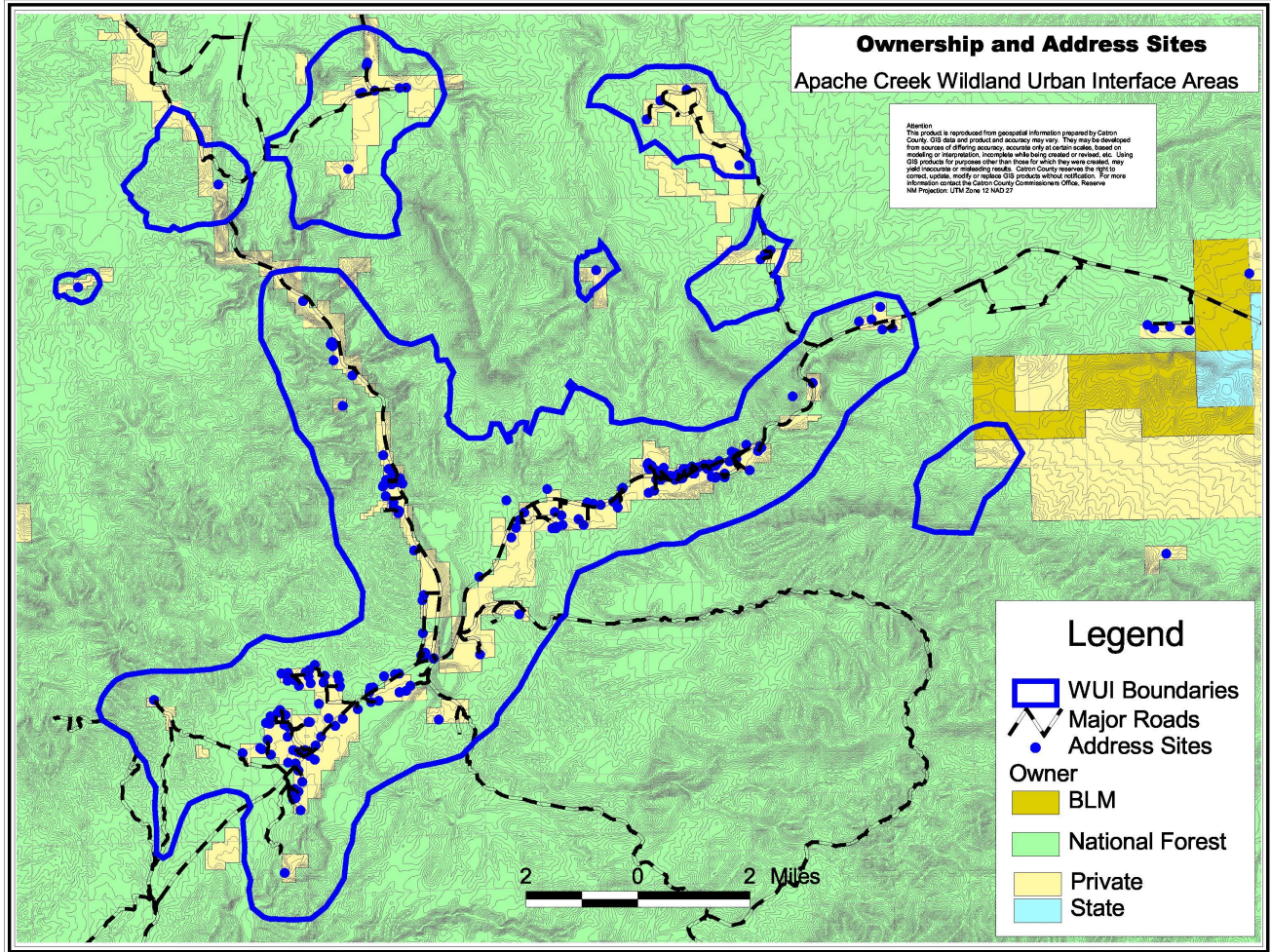
**Supplement to the  
CATRON COUNTY  
COMMUNITY WILDFIRE PROTECTION PLAN**



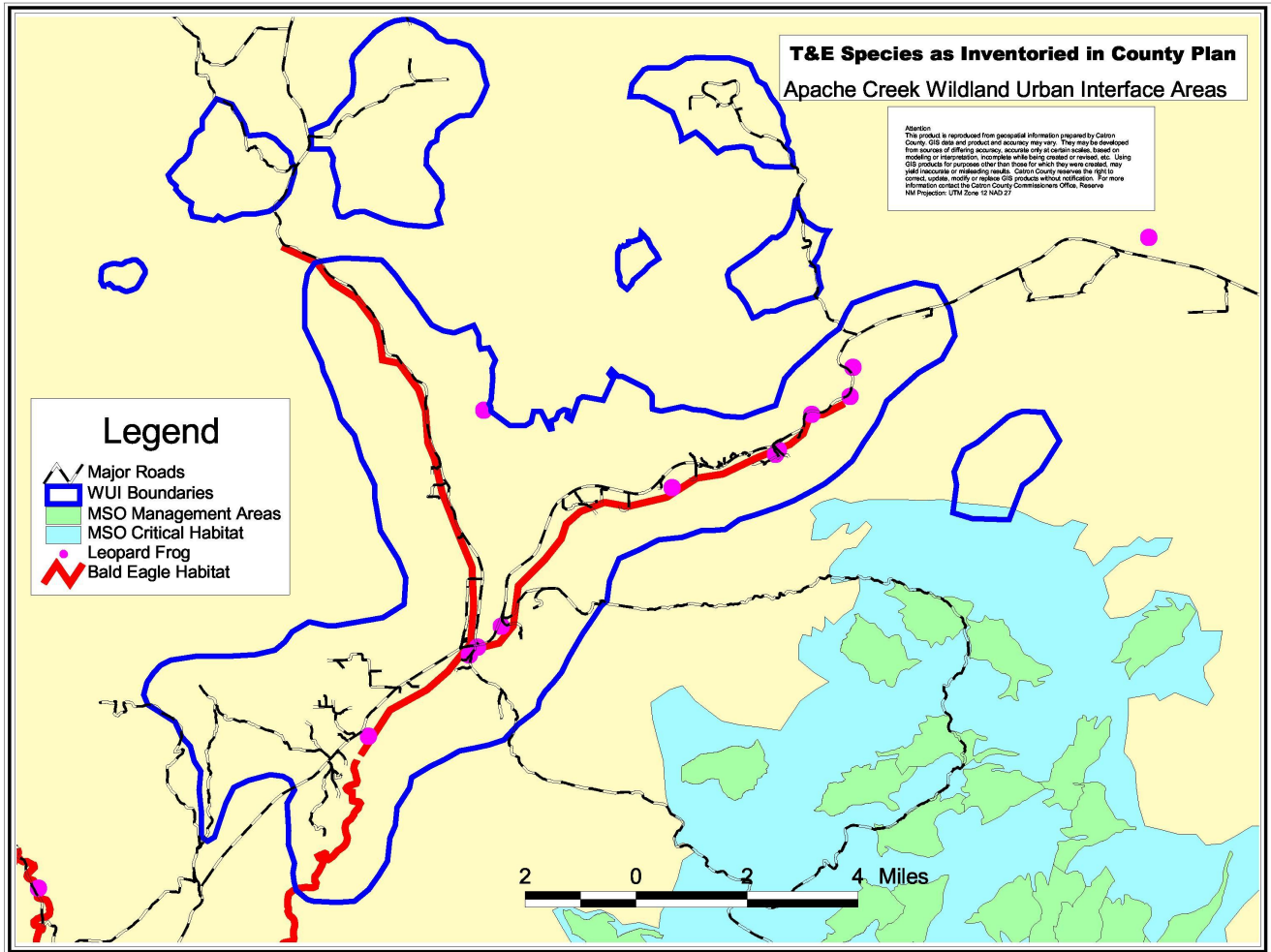
**Map 1: Steepness of Slopes**



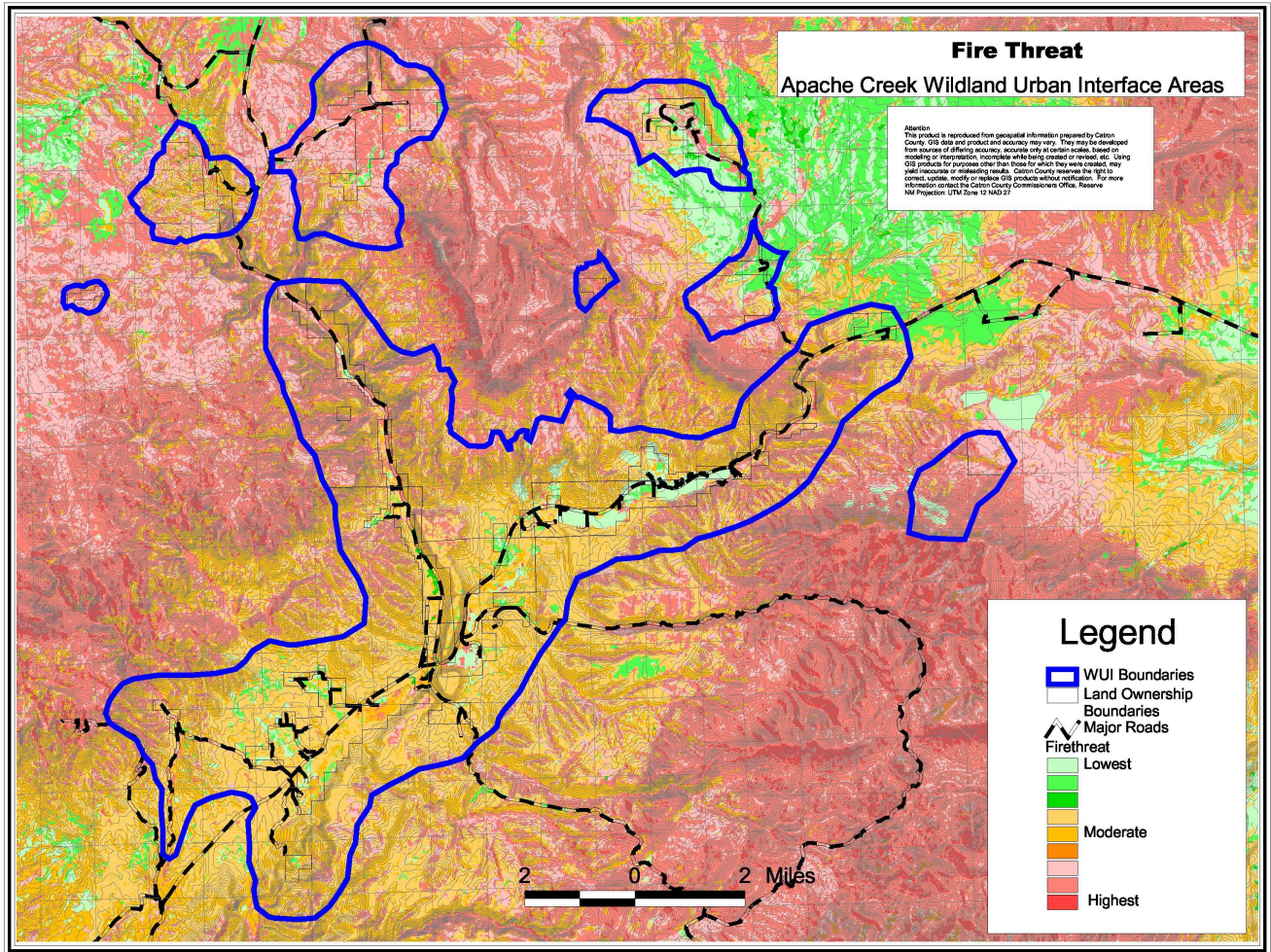
**Map 2: Vegetative Type Groups**



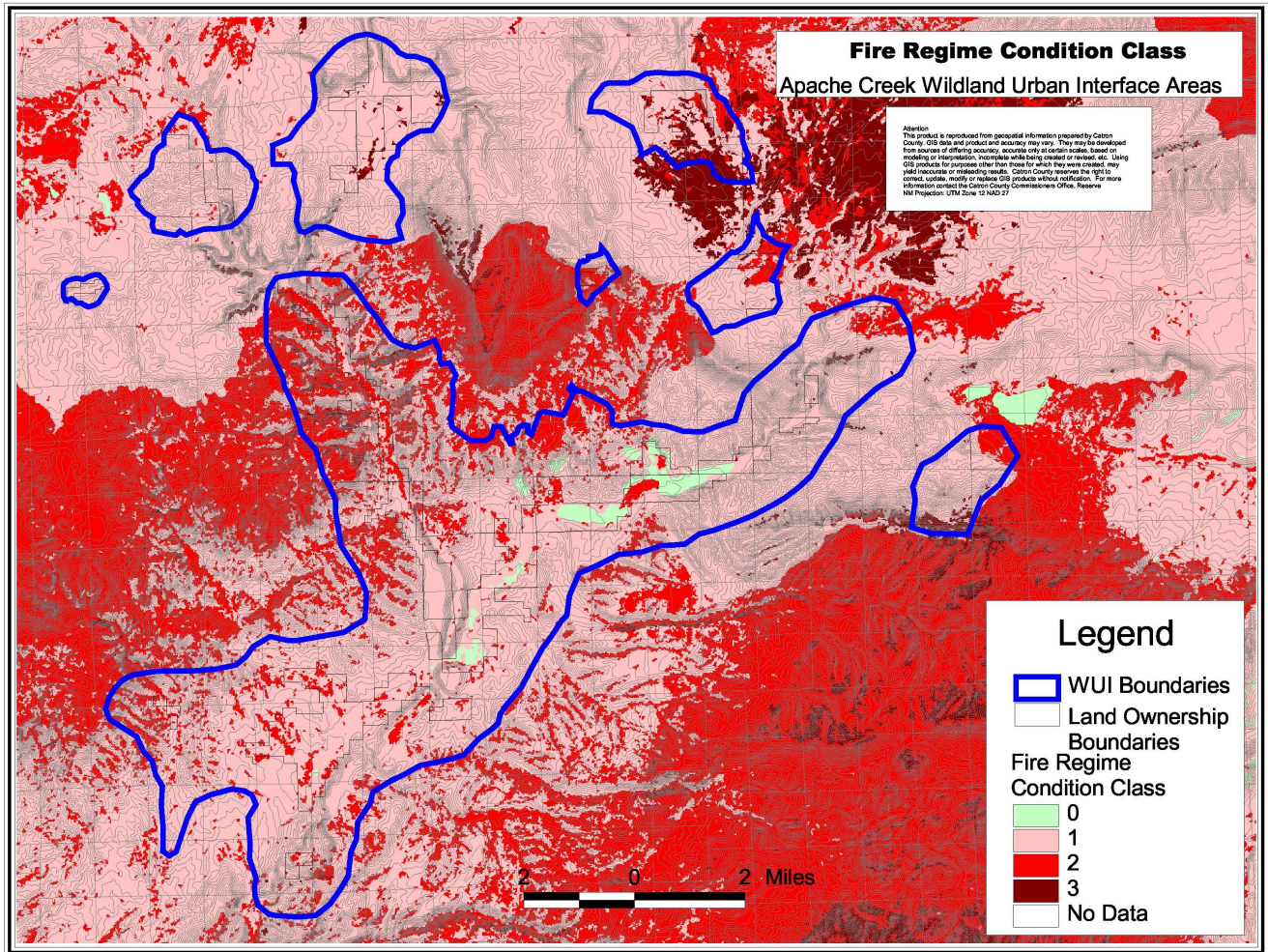
**Map 3: Land Ownership**



**Map 4: Threatened and Endangered Species**

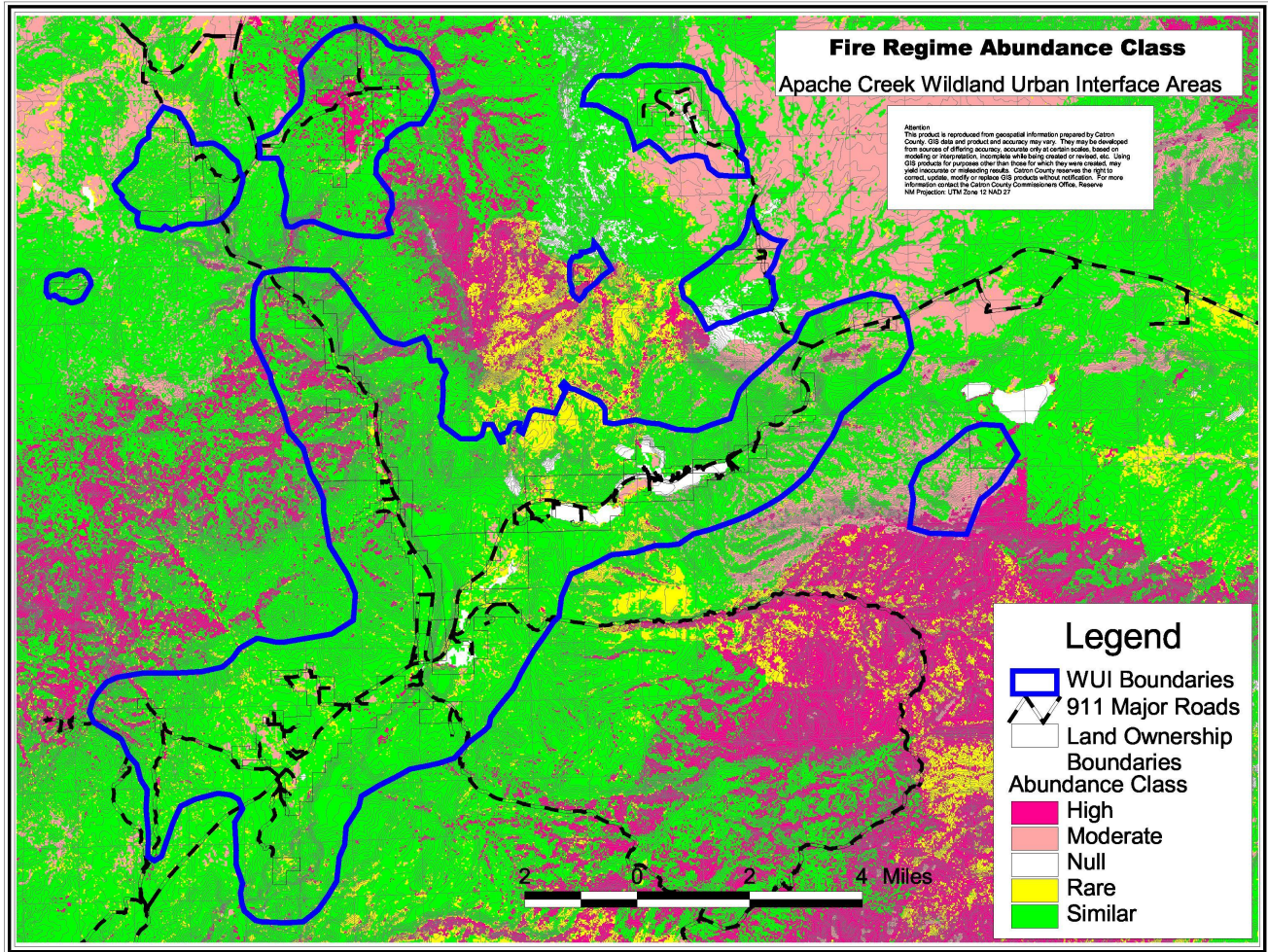


**Map 5: FireThreat**

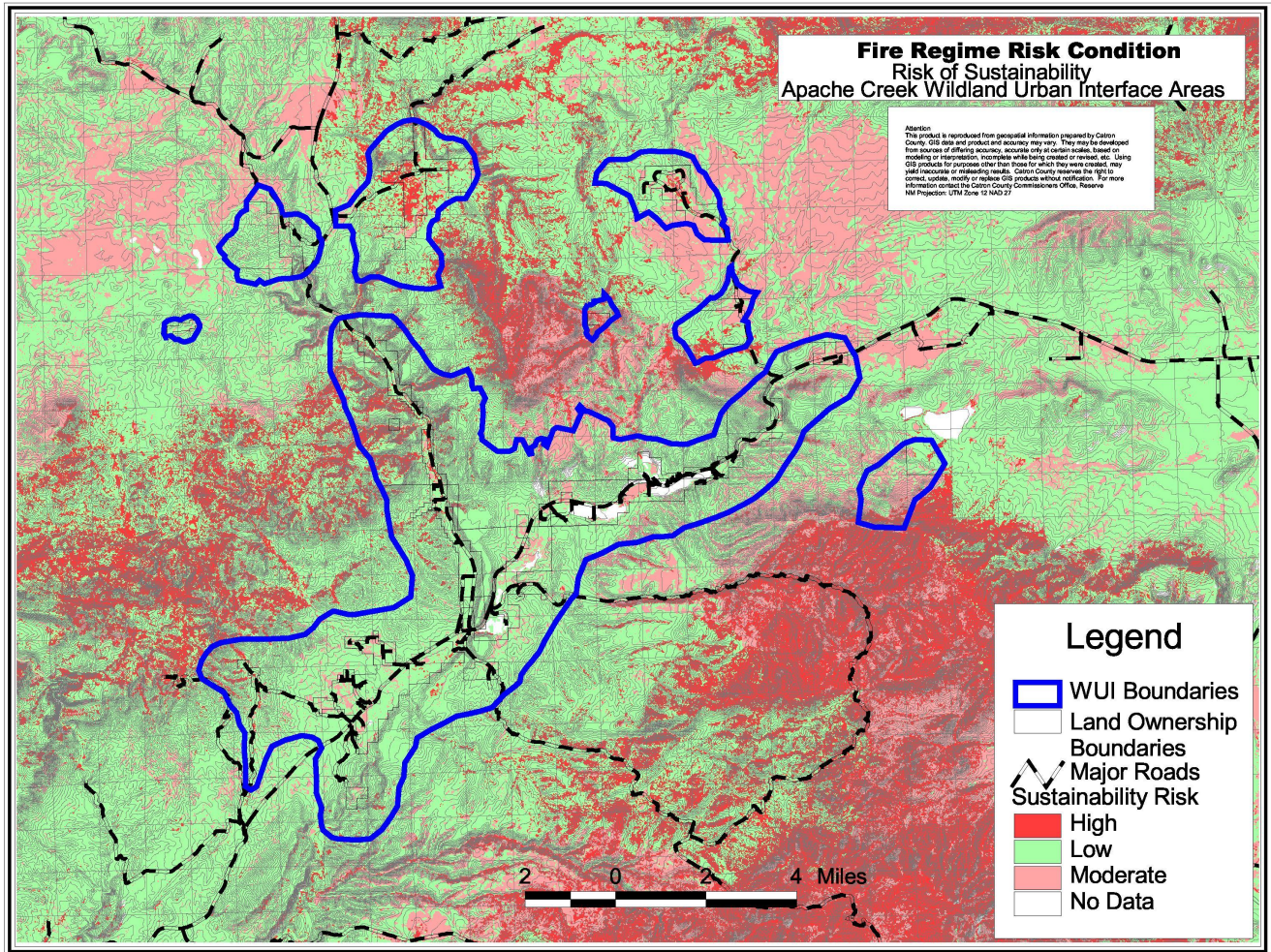


**Map 6: Fire Regime Condition Class**

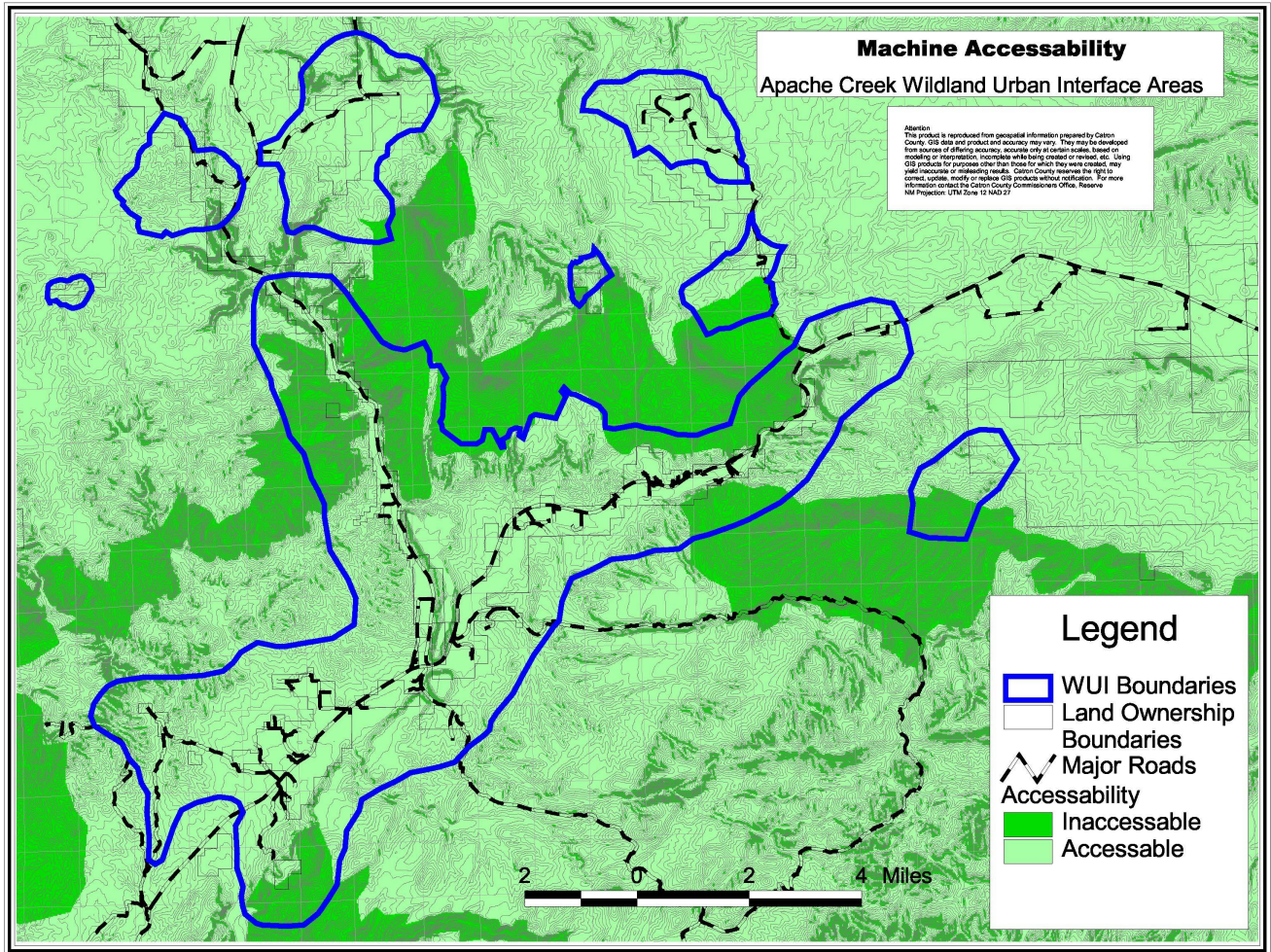




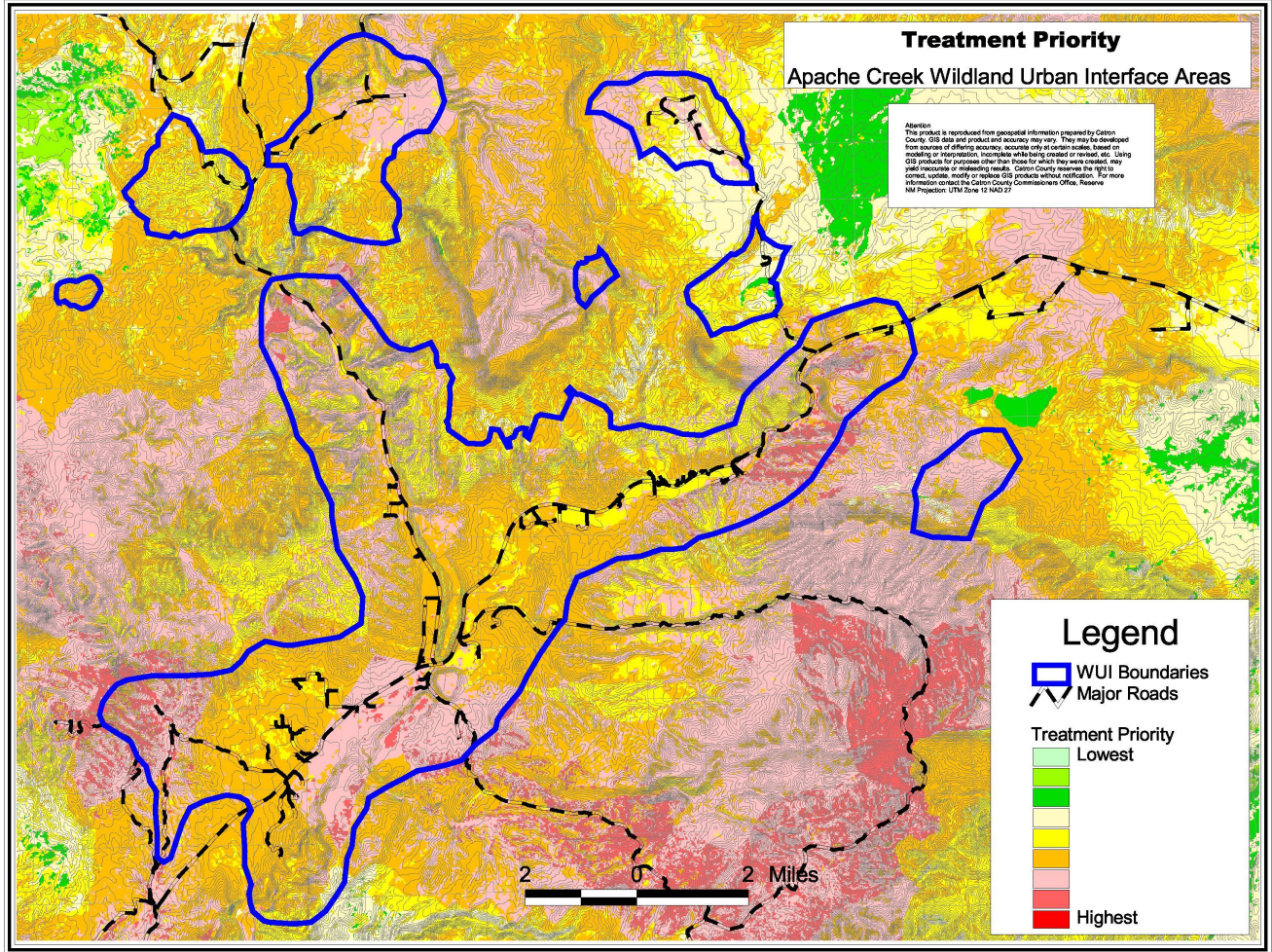
**Map 7: FRCC Abundance Class**



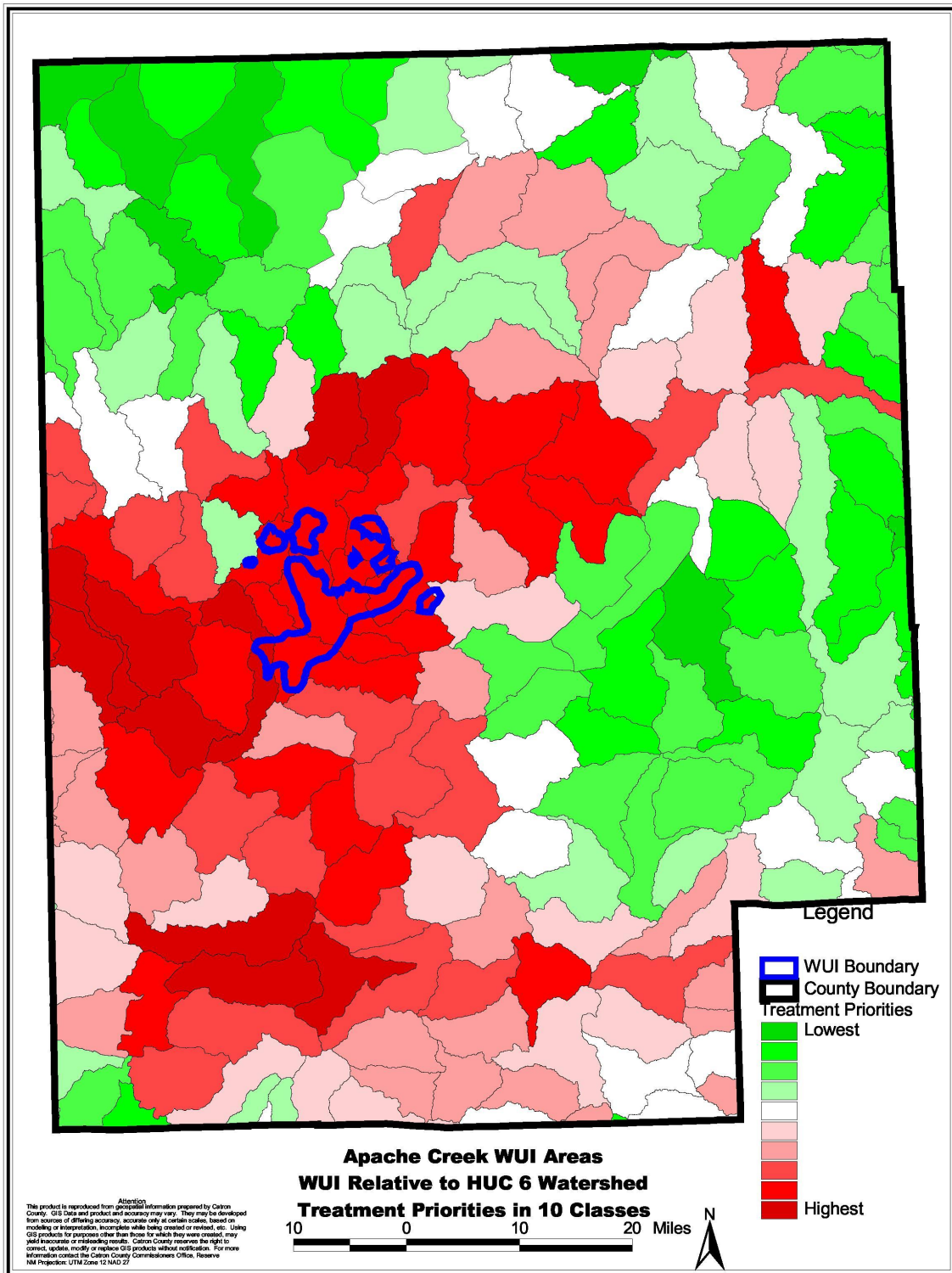
**Map 8: FRCC Risk of Vegetative Condition Not Being Sustainable**



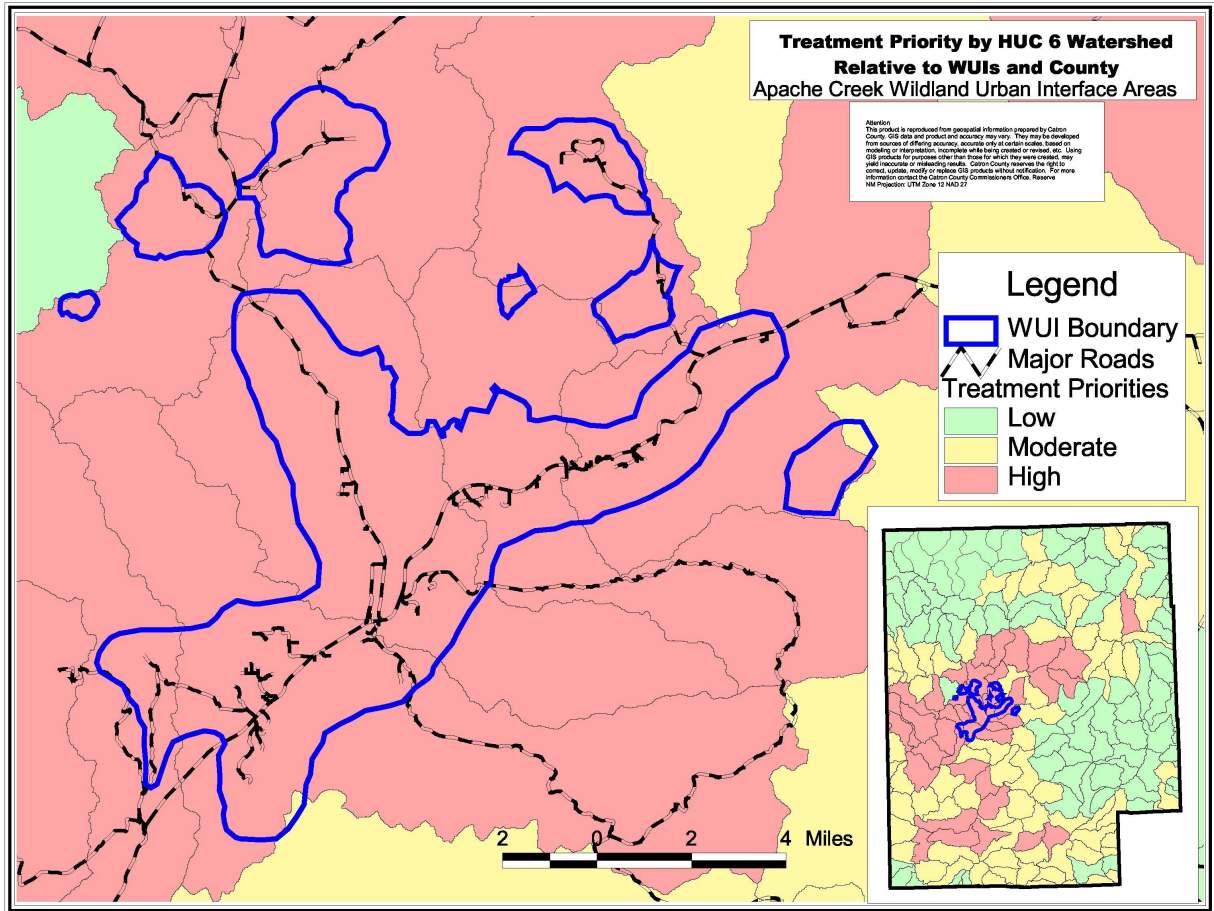
**Map 9: Machine Accessible Areas**



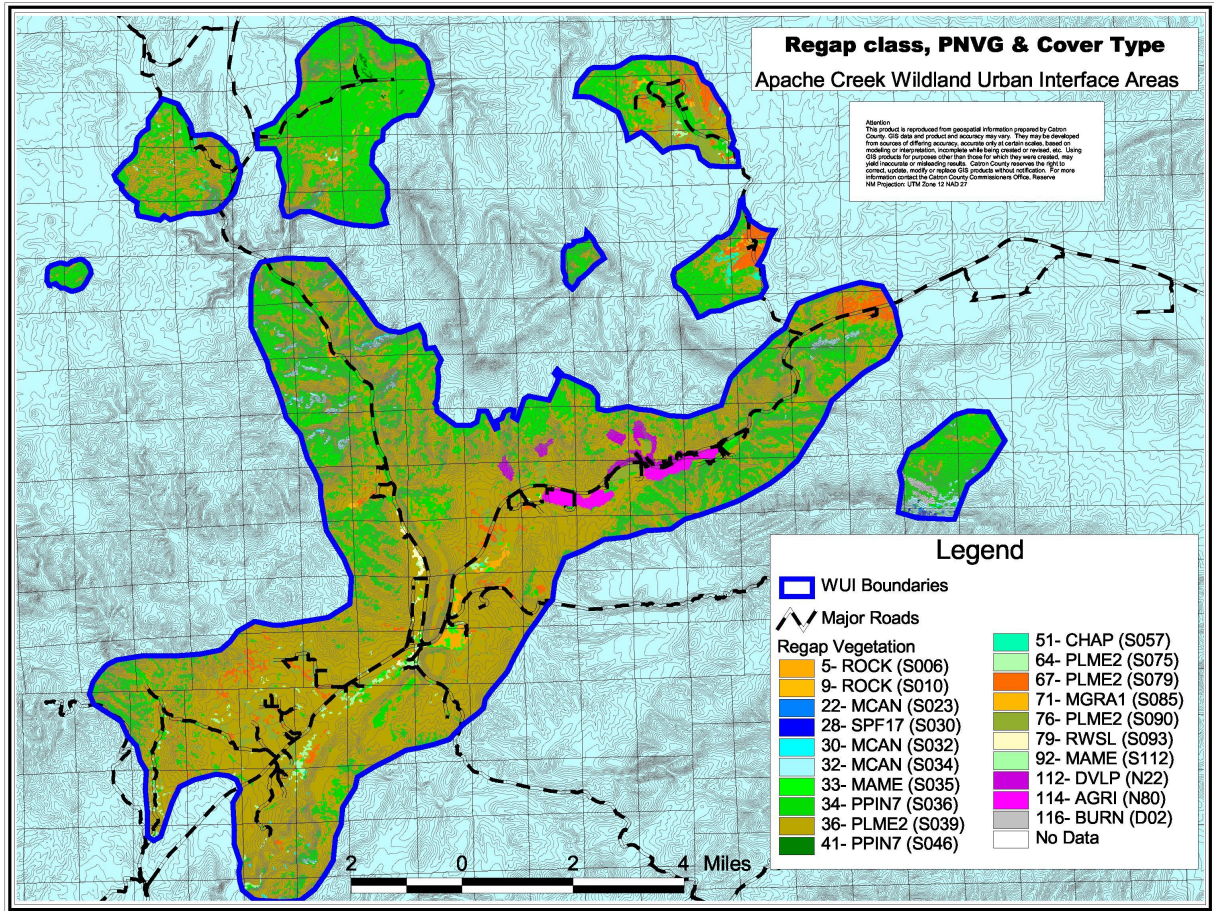
**Map 10: Final Treatment Priorities**



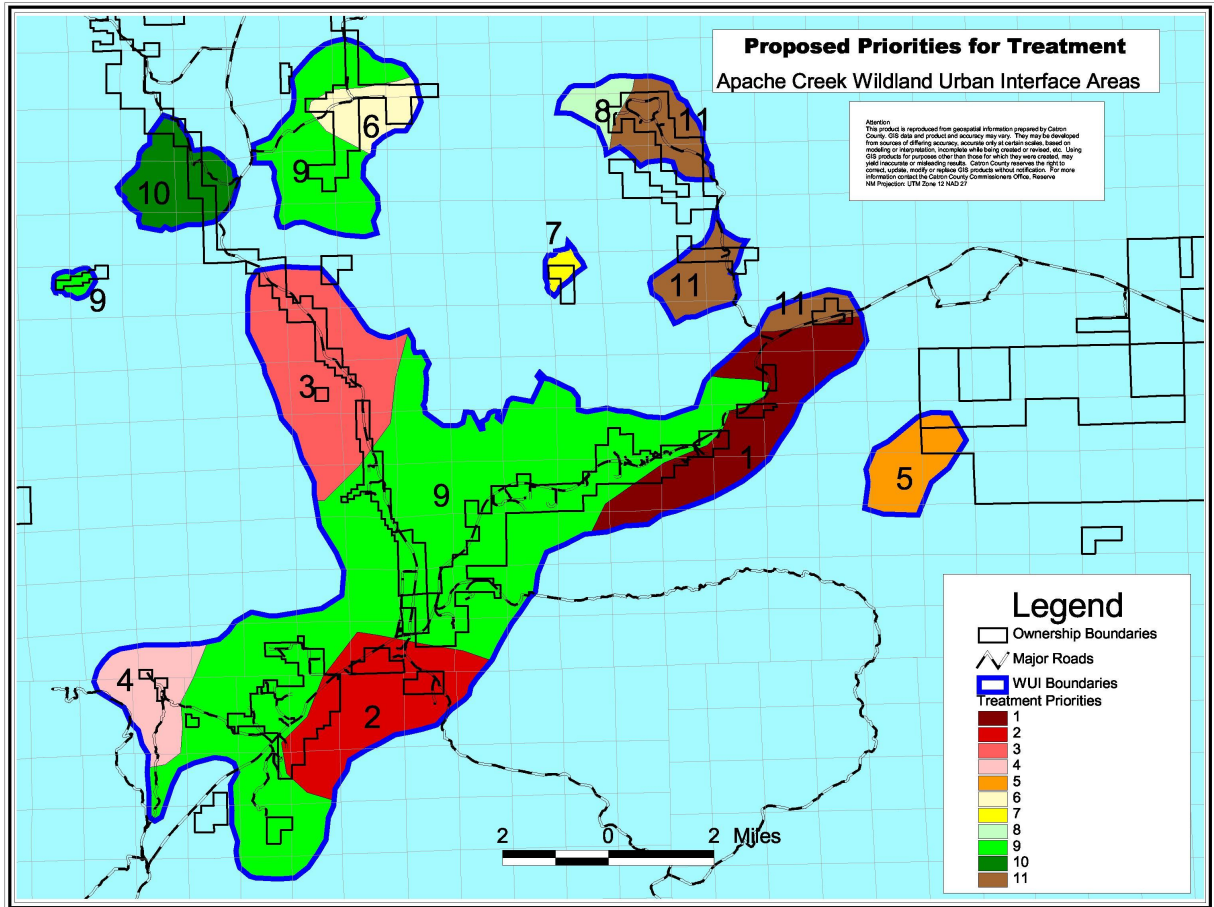
**Map 11: WUI Relative to HUC 6 Watersheds**



**Map 12: Treatment Priority by HUC 6 Watershed**



**Map 13: Regap Vegetation Types**



**Map 14: Proposed Mitigation Priorities**