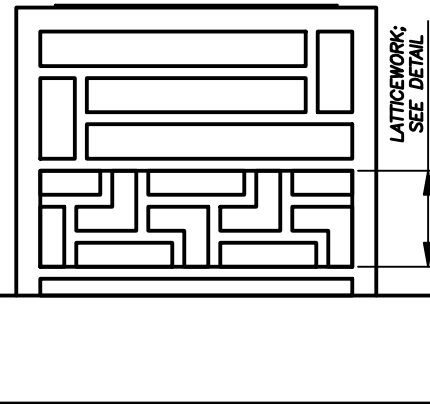
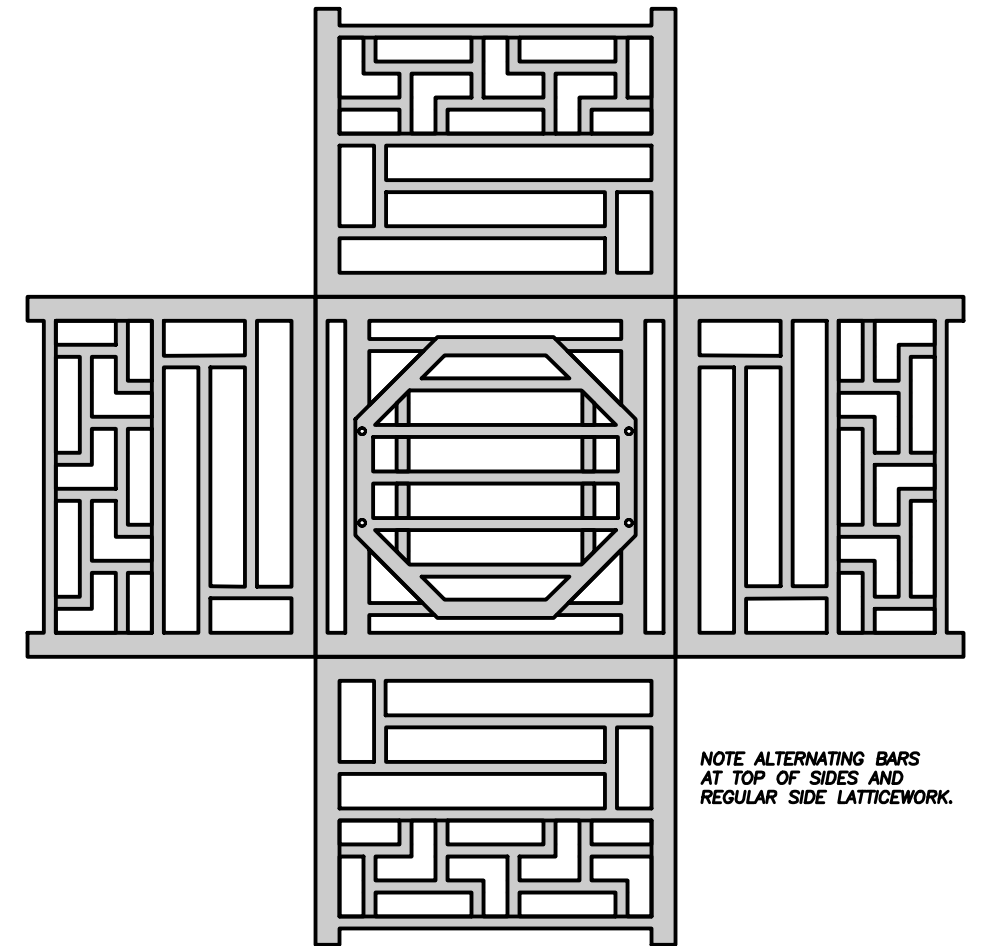


NORTH & SOUTH ELEVATIONS
SCALE: 3/8" = 1'-0"

NOTE: THE ELEVATIONS ARE VIEWS FROM THE OUTSIDE OF THE CUPOLA. THE CROSSBARS AND LATTICEWORK WILL APPEAR MIRRORED FROM THE INSIDE SECTION VIEW ON FIGURE 18.

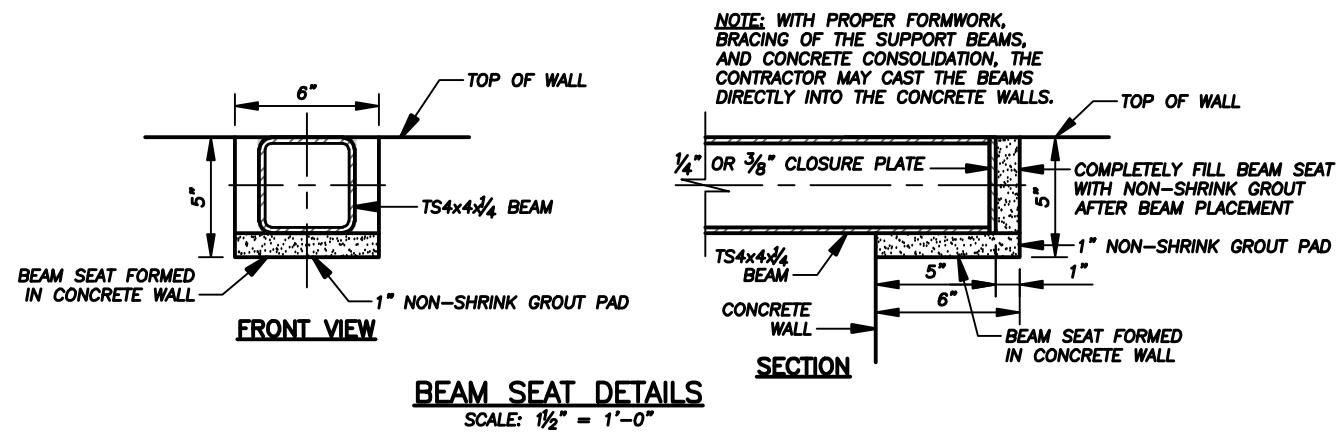


EAST & WEST ELEVATIONS
SCALE: 3/8" = 1'-0"



FLATTENED CUPOLA - PLAN VIEW
SCALE: 3/8" = 1'-0"

NOTE ALTERNATING BARS AT TOP OF SIDES AND REGULAR SIDE LATTICEWORK.



BEAM SEAT DETAILS
SCALE: 1/2" = 1'-0"

NOTE: WITH PROPER FORMWORK, BRACING OF THE SUPPORT BEAMS, AND CONCRETE CONSOLIDATION, THE CONTRACTOR MAY CAST THE BEAMS DIRECTLY INTO THE CONCRETE WALLS.

045-122S SHAFT CUPOLA_2.DWG PLOT SCALE 1 = 32

ABANDONED MINE LAND PROGRAM MINING AND MINERALS DIVISION		
ENERGY, MINERALS AND NATURAL RESOURCES DEPARTMENT		
SCALE: AS SHOWN	CAROLINE LODE CLAIM	DRAWN BY: JAK/JRS
DATE: OCT. 2, 2006		REVISED:
ELEVATION & DETAILS - BAT CUPOLA AT FEATURE 045-122S SHAFT		
LAKE VALLEY MINE SAFEGUARD PROJECT - PHASE II		DRAWING NUMBER: FIGURE 19