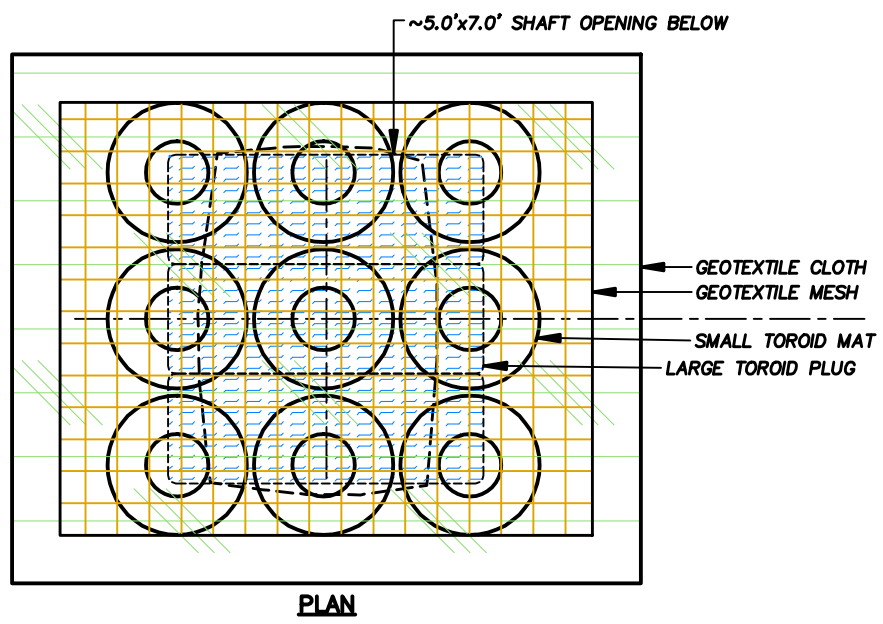
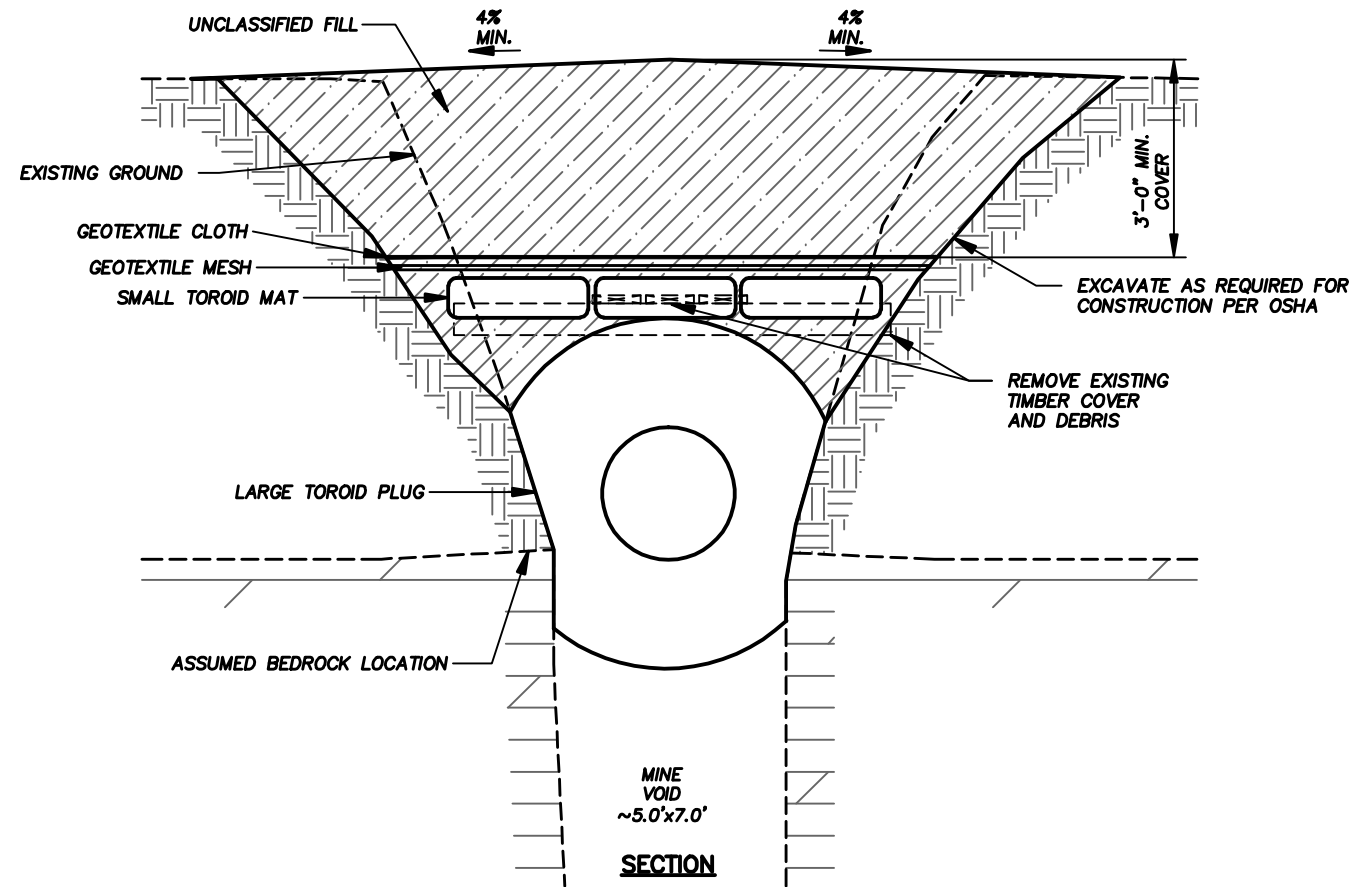


CAUTION - THIS PROJECT REQUIRES CONSTRUCTION WORK IN, AROUND, AND OVER HAZARDOUS AND UNPROTECTED MINE SHAFTS, STOPS, ADITS, AND OTHER OPENINGS WHICH MAY BE OPEN TO THE SURFACE OR HIDDEN FROM VIEW BY TRASH, DEBRIS, OR THIN AND UNSTABLE LAYERS OF SURFACE MATERIALS OR ROCK. THE CONSTRUCTOR SHALL BE RESPONSIBLE FOR THOROUGHLY INVESTIGATING THE SITE CONDITIONS AND SCHEDULING HIS EQUIPMENT, EQUIPMENT OPERATIONS, PERSONNEL, AND SAFETY PROCEDURES TO PREVENT ACCIDENTS AND INJURIES.



LIST OF MATERIALS

LARGE TOROID PLUG UNITS -- 27" X 49"	3 UNITS
SMALL TOROID MAT UNITS	9 UNITS
3/8" GALVANIZED STEEL CABLE	150 FT.
3/8" CROSBY CABLE CLIPS	20 UNITS
GEOTEXTILE MESH	100 SQ FT
GEOTEXTILE NONWOVEN CLOTH	143 SQ FT



GENERAL NOTES:

1. THIS DRAWING SHOWS THE GENERAL SHAPE AND APPROXIMATE SIZE OF THE MINE OPENING AND THE CORRESPONDING LAYOUT OF THE TOROID PLUG. THE DRAWING SHALL BE USED AS A GUIDE FOR FIELD LAYOUT. DETERMINE THE ACTUAL LAYOUT AND DIMENSIONS OF THE CLOSURE IN THE FIELD PRIOR TO FABRICATION.
2. THE INDICATED BEDROCK LOCATIONS ARE APPROXIMATE. THE BEDROCK SURFACE IS EXPECTED TO BE ROUGH, IRREGULAR AND VARIABLE IN DEPTH.
3. MINIMIZE THE AMOUNT OF ROCK, TIMBER AND OTHER DEBRIS THAT FALL INTO THE MINE OPENING DURING CONSTRUCTION.
4. SLOPE THE FINISH GRADE TO DRAIN STORM WATER AWAY FROM THE TOROID PLUG AS INDICATED.

ABANDONED MINE LAND PROGRAM MINING AND MINERALS DIVISION		
ENERGY, MINERALS AND NATURAL RESOURCES DEPARTMENT		
SCALE: 1/4" = 1'-0"	NORTH CAROLINA LODE	DRAWN BY: JAK/JRS
DATE: AUGUST 15, 2006		REVISED:
TOROID PLUG AT FEATURE 046-052S SHAFT		
LAKE VALLEY MINE SAFEGUARD PROJECT - PHASE II		DRAWING NUMBER: FIGURE 24

046-052S SHAFT PLUG.DWG PLOT SCALE 1 = 48