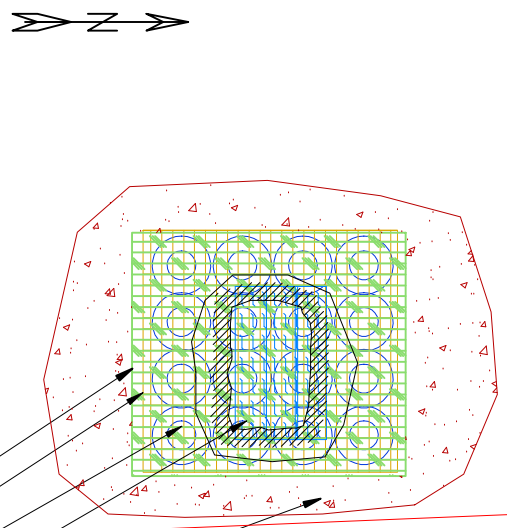


LAKE VALLEY SITE 047-024S 0 5 10Ft.
(AS FOUND)



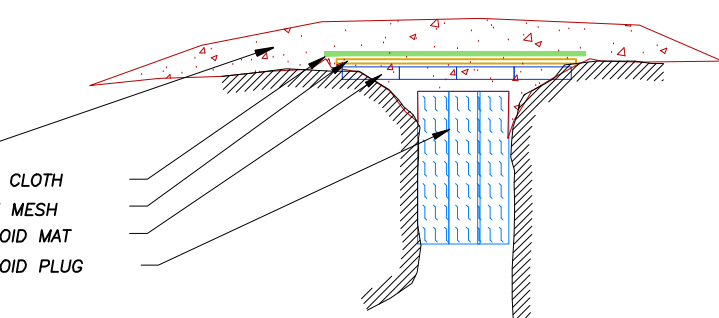
GEOTEXTILE CLOTH
GEOTEXTILE MESH
SMALL TOROID MAT
LARGE TOROID PLUG
FILL

PLAN VIEW

LIST OF MATERIALS

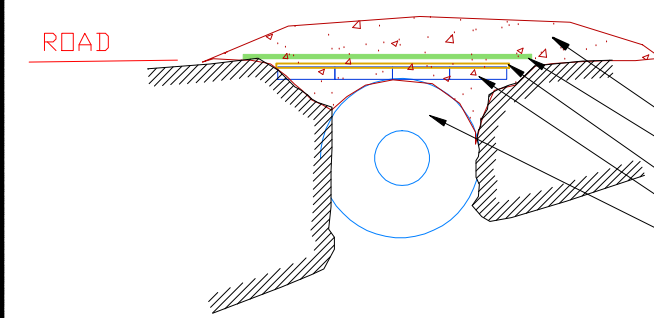
LARGE TOROID PLUG UNITS -- 27" x 49"	3 UNITS
SMALL TOROID MAT UNITS --	16 UNITS
5/16" GALVANIZED STEEL CABLE	240 FT.
5/16" CROSBY CABLE CLIPS	32 UNITS
GEOTEXTILE MESH	172 SQ FT
GEOTEXTILE NONWOVEN CLOTH	208 SQ FT

FILL
GEOTEXTILE CLOTH
GEOTEXTILE MESH
SMALL TOROID MAT
LARGE TOROID PLUG



SECTION LOOKING WEST

LAKE VALLEY SITE 047-024S
REMEDATION PROGRAM



FILL
GEOTEXTILE CLOTH
GEOTEXTILE MESH
SMALL TOROID MAT
LARGE TOROID PLUG

ELEVATION LOOKING SOUTH

0 5 10Ft.

FIGURE 55

STATE OF NEW MEXICO
ENERGY, MINERALS AND NATURAL RESOURCES DEPARTMENT
MINING AND MINERALS DIVISION
ABANDONED MINE LAND PROGRAM

LAKE VALLEY PROJECT
SITE 047-024S

DATE:- JANUARY 2, 2006	DRAWN BY:- N.L.T.
SCALE:- 1"=11'	FILE:- 047-024 049-000

DALE E. SCHOLZ, INC.

047-024 (1) REV Print.DWG PLOT SCALE 1 = 5.5