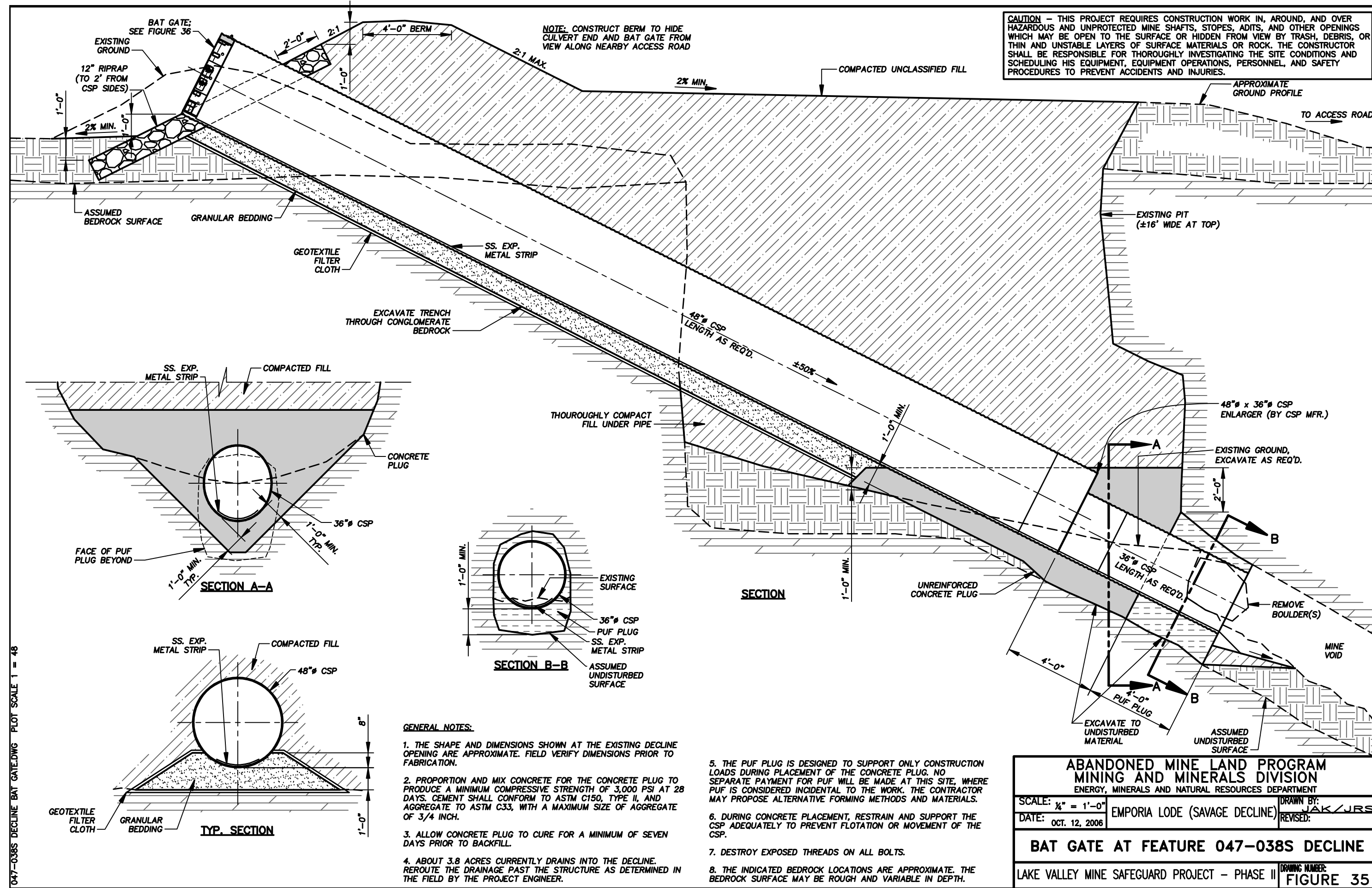


**CAUTION - THIS PROJECT REQUIRES CONSTRUCTION WORK IN, AROUND, AND OVER HAZARDOUS AND UNPROTECTED MINE SHAFTS, STOPS, ADITS, AND OTHER OPENINGS WHICH MAY BE OPEN TO THE SURFACE OR HIDDEN FROM VIEW BY TRASH, DEBRIS, OR THIN AND UNSTABLE LAYERS OF SURFACE MATERIALS OR ROCK. THE CONSTRUCTOR SHALL BE RESPONSIBLE FOR THOROUGHLY INVESTIGATING THE SITE CONDITIONS AND SCHEDULING HIS EQUIPMENT, EQUIPMENT OPERATIONS, PERSONNEL, AND SAFETY PROCEDURES TO PREVENT ACCIDENTS AND INJURIES.**



NOTE: CONSTRUCT BERM TO HIDE CULVERT END AND BAT GATE FROM VIEW ALONG NEARBY ACCESS ROAD

047-036S DECLINE BAT GATE.DWG PLOT SCALE 1 = 48

- GENERAL NOTES:**
1. THE SHAPE AND DIMENSIONS SHOWN AT THE EXISTING DECLINE OPENING ARE APPROXIMATE. FIELD VERIFY DIMENSIONS PRIOR TO FABRICATION.
  2. PROPORTION AND MIX CONCRETE FOR THE CONCRETE PLUG TO PRODUCE A MINIMUM COMPRESSIVE STRENGTH OF 3,000 PSI AT 28 DAYS. CEMENT SHALL CONFORM TO ASTM C150, TYPE II, AND AGGREGATE TO ASTM C33, WITH A MAXIMUM SIZE OF AGGREGATE OF 3/4 INCH.
  3. ALLOW CONCRETE PLUG TO CURE FOR A MINIMUM OF SEVEN DAYS PRIOR TO BACKFILL.
  4. ABOUT 3.8 ACRES CURRENTLY DRAINS INTO THE DECLINE. REROUTE THE DRAINAGE PAST THE STRUCTURE AS DETERMINED IN THE FIELD BY THE PROJECT ENGINEER.
  5. THE PUF PLUG IS DESIGNED TO SUPPORT ONLY CONSTRUCTION LOADS DURING PLACEMENT OF THE CONCRETE PLUG. NO SEPARATE PAYMENT FOR PUF WILL BE MADE AT THIS SITE, WHERE PUF IS CONSIDERED INCIDENTAL TO THE WORK. THE CONTRACTOR MAY PROPOSE ALTERNATIVE FORMING METHODS AND MATERIALS.
  6. DURING CONCRETE PLACEMENT, RESTRAIN AND SUPPORT THE CSP ADEQUATELY TO PREVENT FLOTATION OR MOVEMENT OF THE CSP.
  7. DESTROY EXPOSED THREADS ON ALL BOLTS.
  8. THE INDICATED BEDROCK LOCATIONS ARE APPROXIMATE. THE BEDROCK SURFACE MAY BE ROUGH AND VARIABLE IN DEPTH.

<b>ABANDONED MINE LAND PROGRAM</b>	
<b>MINING AND MINERALS DIVISION</b>	
ENERGY, MINERALS AND NATURAL RESOURCES DEPARTMENT	
SCALE: 1/4" = 1'-0"	DRAWN BY: JAK/JRS
DATE: OCT. 12, 2006	REVISOR: JAK/JRS
<b>BAT GATE AT FEATURE 047-038S DECLINE</b>	
LAKE VALLEY MINE SAFEGUARD PROJECT - PHASE II	DRAWING NUMBER: <b>FIGURE 35</b>