



Freeport-McMoRan Chino Mines Company
P.O. Box 10
Bayard, NM 88023

November 19, 2014

Certified Mail #70133020000181689610
Return Receipt Requested

Mr. Fernando Martinez, Director
Mining and Minerals Division,
1220 South St. Francis Drive,
Santa Fe, NM 87505

Dear Mr. Martinez:

RE: Chino Mine 2014 Financial Assurance Release
Request for Modification of Permit No. GR009RE, Revision 01-1

Freeport-McMoRan Chino Mines Company (Chino) requests a partial release of financial assurance pursuant to 19.10.12.1210 NMAC and a modification of Mining Act Permit Revision 01-1 to Permit No. GR009RE (GR009RE) to reduce the amount of financial assurance (FA) required for the implementation of the Closeout Plan. Chino specifically requests that the FA be reduced for reclamation work completed on Lake 1, see Map 1.

An overview of the current Chino Financial Assurance and the instruments by which it has been implemented is provided in GR009RE. In accordance with the terms and conditions of GR009RE the FA is held in the form of a cash trust in the amount of \$64,042,304 (with interest, the current balance has increased to about \$113,555,210) and a third party guarantee issued by Freeport-McMoRan Copper and Gold, Inc. in the amount of \$111,230,029 for the total required amount of \$175,272,333. The current amount held in FA is \$224,785,239, which exceeds the required amount by \$ 49,512,906. Permit Modification 13-1 (approval of Chino's request for release of FA for Tailings Ponds 1, 2 and 4) in the amount of \$4,682,716 is pending.

Chino is requesting that the total reclamation FA be reduced by a total of \$4,392,885 (2003 dollars) or \$4,253,072 (net present value, NPV) to account for the completion of earthwork that took place in 2013 and 2014 on Lake One. The FA reduction request in 2003 dollars is shown by facility in the summary table below. The remaining (\$152,751) is retained for additional assurance for re-seeding work, though the entire site was seeded as part of the reclamation work completed and the operation and maintenance portion of Chino's FA includes re-seeding funds also.

Facility/Project	Total \$ Amount in FA	Proposed \$ Amount of Reduction in FA	Remaining FA
Lake 1	\$ 4,545,636	\$ 4,392,885	\$ 152,751

This application includes all the information required by 19.10.12.1210 of the NMMA for a FA release. All of the requirements of GR009RE, Discharge Plan 1340 (DP-1340), and the approved Construction Design

Mr. Fernando Martinez
November 19, 2014
Page 2

Quality Assurance Plan (CDQAP) have been achieved and inspected throughout construction. Chino understands before the FA will be released the MMD will conduct a site inspection and evaluation of the reclamation and closeout measures. If the public chooses they may also attend the site inspection and request a public hearing.

Attachments A through F contain the following information:

Attachment A: (Approved Financial Assurance Cash Flow and NPV Calculation): This is the most recent approved FA estimate (2012 FA Release) and was used as the starting basis for the NPV calculations. The 2012 estimate sheet reflects the removal of FA as approved in Modification 12-2 to GR009RE.

Attachment B: (Financial Assurance 2003 Dollar Reduction Cost Estimate): This is the approved FA cost estimate broken out by facility. The highlighted cells correspond to the proposed FA release amount.

Attachment C: (Proposed 2014 Financial Assurance Cash Flow and NPV Calculation): This attachment provides the current and NPV amounts that Chino is requesting for release compared to the 2012 FA (Attachment A). Also included is the 2014 cash flow and NPV table. The updated cash flow table would replace the 2012 table if approved by MMD.

Attachments D: (Financial Assurance Release Cost Estimate (in 2003 dollars) for Lake 1, Aerial Photos and Maps): This attachment includes the detailed cost calculation for each facility that corresponds to the summary in Attachment B. Maps, photos and other information are provided as summary documentation of the reclamation work completed.

Attachment E: (Public Notice Documentation): As specified in 19.10.9.903 of the NMMA Chino provides as proof of public notice the following information:

- The certified mail public notice to landowners of record within ½ mile of the property boundary, state and federal agencies, local municipalities and interested parties.
- Examples of certified receipts and all other public notice documentation that is available in Chino files as proof of public notice.
- Affidavits and newspaper clipping that document publication in the Silver City Daily Press on November 17, 2014 in English and Spanish.
- The list of public areas where the notice was posted including photographs.

Attachment F: (Electronic Copy of Application Materials provided on CD)

Proposed Permit GR009RE Modifications

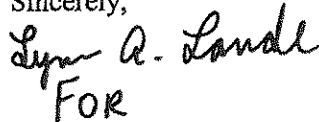
Chino requests that Permit GR009RE Revision 01-1 be modified as follows and in all areas where specific financial assurance numbers are called out.

Mr. Fernando Martinez
November 19, 2014
Page 3

In Section 8 – the new required amount of FA should be changed from \$175,272,333 to \$171,019,261. The estimate of total remaining Closure/Closeout work at Chino required for financial assurance is \$360,247,050 (2003 dollars) and \$171,019,261 (NPV) (Attachment C).

The \$1,000 permit modification fee is included with this application for processing. Chino is not proposing at this time precise changes to FA instruments affected by this release pending review and decisions by agencies on other actions affecting FA at the site. Chino appreciates your consideration of this matter and scheduling the required inspection. Please contact Lynn Lande at 575-912-5235 if you require any additional information.

Sincerely,



FOR
Thomas L. Shelley, Manager
Reclamation

LAL: da
Enclosures
20141118-001

c. Chris Eustice, MMD
Kurt Vollbrecht, NMED w/o Attachements

For inquiries, contact us via e-mail:
 AP@FMI.com <mailto:AP@FMI.com> Self-service
 website: http://partners.fmi.com



Freeport-McMoRan Inc.
 333 North Central Ave
 Phoenix AZ 85004

0968

0000 0000409 00000000 002 017 00401 INS: 0 0

NM ENRGY MNRLS & NAT RES DPT
 MINING ACT RECLAMATION BUREAU
 1220 SOUTH ST FRANCIS DR
 SANTA FE NM 87505

INVOICE NUMBER	INVOICE DATE	PURCHASE ORDER	COMPANY	GROSS AMOUNT	DISCOUNT	NET AMOUNT
071614 PERMIT MODIFICATION	07/16/14 GR009RE	FOR LAK	FREEPORT-MCMORAN CORPORAT	1,000.00	0.00	1,000.00
Check Number	Date	Vendor Number	Name	Total Amount		
0000821290	07/18/14	0000101184	NM ENRGY MNRLS & NAT RES DPT	\$1,000.00		

CH249 v.02 01-12-2012

ORIGINAL DOCUMENT IS PRINTED ON CHEMICAL REACTIVE PAPER WITH MICROPRINTED BORDER - DO NOT CASHP IF THE WORD VOID IS VISIBLE



Freeport-McMoRan Inc.
 333 North Central Ave
 Phoenix AZ 85004

CHECK NO.
0000821290

64-1278/611.GA

DATE OF CHECK

07/18/14

PAY: ONE THOUSAND AND 00/100 DOLLARS

TO THE ORDER OF NM ENRGY MNRLS & NAT RES DPT
 MINING ACT RECLAMATION BUREAU
 1220 SOUTH ST FRANCIS DR
 SANTA FE NM 87505

CHECK AMOUNT

\$1,000.00

Security feature: Microprint on back

Bank of America, N.A.

Authorized Signature

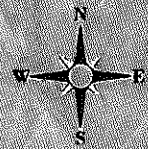
⑈0000821290⑈ ⑆061112788⑆ 3299998445⑈



Hurley New Mexico

Security Gate
Slag Pile
Herrington Creek

Lake One
Tailing Pond 1
Barrow A & B
Tailing Pond 2
South Lake
Tailing Pond 3
Tailing Pond 4 East
Tailing Pond 4 West
Tailing Pond C
Barrow C
Tailing Pond 6 East
Tailing Pond 6 West
Barrow D
Tailing Pond 7



Legend
 Completed Reclamation

FREEMAN-MCMORAN
Chino Mine South Reclamation Areas
 Scale: As Noted Date: 8-8-2014 Notes:
 Dept: Environmental Services
 Drawn By: ms Checked By: ms **Map 1**

Attachment A

**Approved Financial Assurance Cash Flow
And NPV Calculation**

Attachment A Chino Mines Company
 CCP Cash Flow and NPV Table - Financial Assurance Release which reflects permit modification 1.2-2 (2012 FA Release)

After FA Reduction:

Summary:	Total	NPV
Earthwork	\$ 124,060,737	\$ 101,433,672
WTP	\$ 236,445,469	\$ 69,704,931
Studies	\$ 471,100	\$ 471,100
Cover Material Handling	\$ 3,662,430	\$ 3,662,430
Total	\$ 364,639,736	\$ 175,934,533

Before FA Reduction:

Summary:	Total	NPV
Earthwork	\$ 131,485,066	\$ 108,602,344
WTP	\$ 236,445,469	\$ 69,704,931
Studies	\$ 3,208,800	\$ 3,208,800
Cover Material Handling	\$ 3,862,430	\$ 3,862,430
Total	\$ 374,901,765	\$ 185,378,505

Change:

Summary:	Total	NPV
Earthwork	\$ (7,404,330)	\$ (7,168,672)
WTP	\$ -	\$ -
Studies	\$ (2,737,500)	\$ (2,737,500)
Cover Material Handling	\$ -	\$ -
Total	\$ (10,141,830)	\$ (9,906,172)

Year	Discount Rates		Earthwork		Earthwork + WTP	
	Inflation rates (%)	→	NPV	Total	NPV	Total
1			\$6,610,139	\$16,928,474	\$6,610,139	\$16,928,474
2			\$4,428,765	\$4,433,300	\$4,428,765	\$4,433,300
3			\$5,155,093	\$2,851,400	\$5,155,093	\$2,851,400
4			\$4,888,618	\$2,445,600	\$4,888,618	\$2,445,600
5			\$5,369,337	\$2,245,400	\$5,369,337	\$2,245,400
6			\$4,076,021	\$2,245,400	\$4,076,021	\$2,245,400
7			\$9,079,104	\$2,233,300	\$9,079,104	\$2,233,300
8			\$11,683,980	\$2,230,900	\$11,683,980	\$2,230,900
9			\$11,031,632	\$1,975,555	\$11,031,632	\$1,975,555
10			\$11,842,823	\$2,226,200	\$11,842,823	\$2,226,200
11			\$10,650,824	\$2,226,200	\$10,650,824	\$2,226,200
12			\$13,077,13	\$1,975,555	\$13,077,13	\$1,975,555
13			\$7,570,314	\$2,222,500	\$7,570,314	\$2,222,500
14			\$9,749,449	\$2,217,700	\$9,749,449	\$2,217,700
15			\$9,749,449	\$2,209,200	\$9,749,449	\$2,209,200
16			\$9,749,449	\$2,204,500	\$9,749,449	\$2,204,500
17			\$9,749,449	\$2,193,700	\$9,749,449	\$2,193,700
18			\$9,749,449	\$2,187,900	\$9,749,449	\$2,187,900
19			\$9,749,449	\$2,181,200	\$9,749,449	\$2,181,200
20			\$9,749,449	\$2,174,500	\$9,749,449	\$2,174,500
21			\$9,749,449	\$2,167,800	\$9,749,449	\$2,167,800
22			\$9,749,449	\$2,161,100	\$9,749,449	\$2,161,100
23			\$9,749,449	\$2,154,400	\$9,749,449	\$2,154,400
24			\$9,749,449	\$2,147,700	\$9,749,449	\$2,147,700
25			\$9,749,449	\$2,141,000	\$9,749,449	\$2,141,000
26			\$9,749,449	\$2,134,300	\$9,749,449	\$2,134,300
27			\$9,749,449	\$2,127,600	\$9,749,449	\$2,127,600
28			\$9,749,449	\$2,120,900	\$9,749,449	\$2,120,900
29			\$9,749,449	\$2,114,200	\$9,749,449	\$2,114,200
30			\$9,749,449	\$2,107,500	\$9,749,449	\$2,107,500
31			\$9,749,449	\$2,100,800	\$9,749,449	\$2,100,800
32			\$9,749,449	\$2,094,100	\$9,749,449	\$2,094,100
33			\$9,749,449	\$2,087,400	\$9,749,449	\$2,087,400
34			\$9,749,449	\$2,080,700	\$9,749,449	\$2,080,700
35			\$9,749,449	\$2,074,000	\$9,749,449	\$2,074,000
36			\$9,749,449	\$2,067,300	\$9,749,449	\$2,067,300
37			\$9,749,449	\$2,060,600	\$9,749,449	\$2,060,600
38			\$9,749,449	\$2,053,900	\$9,749,449	\$2,053,900
39			\$9,749,449	\$2,047,200	\$9,749,449	\$2,047,200
40			\$9,749,449	\$2,040,500	\$9,749,449	\$2,040,500
41			\$9,749,449	\$2,033,800	\$9,749,449	\$2,033,800
42			\$9,749,449	\$2,027,100	\$9,749,449	\$2,027,100
43			\$9,749,449	\$2,020,400	\$9,749,449	\$2,020,400
44			\$9,749,449	\$2,013,700	\$9,749,449	\$2,013,700
45			\$9,749,449	\$2,007,000	\$9,749,449	\$2,007,000
46			\$9,749,449	\$2,000,300	\$9,749,449	\$2,000,300
47			\$9,749,449	\$1,993,600	\$9,749,449	\$1,993,600
48			\$9,749,449	\$1,986,900	\$9,749,449	\$1,986,900
49			\$9,749,449	\$1,980,200	\$9,749,449	\$1,980,200
50			\$9,749,449	\$1,973,500	\$9,749,449	\$1,973,500
51			\$9,749,449	\$1,966,800	\$9,749,449	\$1,966,800
52			\$9,749,449	\$1,960,100	\$9,749,449	\$1,960,100
53			\$9,749,449	\$1,953,400	\$9,749,449	\$1,953,400
54			\$9,749,449	\$1,946,700	\$9,749,449	\$1,946,700
55			\$9,749,449	\$1,940,000	\$9,749,449	\$1,940,000
56			\$9,749,449	\$1,933,300	\$9,749,449	\$1,933,300
57			\$9,749,449	\$1,926,600	\$9,749,449	\$1,926,600
58			\$9,749,449	\$1,919,900	\$9,749,449	\$1,919,900
59			\$9,749,449	\$1,913,200	\$9,749,449	\$1,913,200
60			\$9,749,449	\$1,906,500	\$9,749,449	\$1,906,500
61			\$9,749,449	\$1,899,800	\$9,749,449	\$1,899,800
62			\$9,749,449	\$1,893,100	\$9,749,449	\$1,893,100
63			\$9,749,449	\$1,886,400	\$9,749,449	\$1,886,400
64			\$9,749,449	\$1,879,700	\$9,749,449	\$1,879,700
65			\$9,749,449	\$1,873,000	\$9,749,449	\$1,873,000
66			\$9,749,449	\$1,866,300	\$9,749,449	\$1,866,300
67			\$9,749,449	\$1,859,600	\$9,749,449	\$1,859,600
68			\$9,749,449	\$1,852,900	\$9,749,449	\$1,852,900

Attachment A Chino Mines Company
 CCP Cash Flow and NPV Table - Financial Assurance Release which reflects permit modification 12-2 (2012 FA Release)

	After FA Reduction:	Before FA Reduction:	Change:							
69	\$0	\$171,000	\$171,000	\$7,618	\$2,145,500	\$2,145,500	\$2,145,500	\$35,575	\$2,316,500	\$103,193
70	\$0	\$171,000	\$171,000	\$7,277	\$2,145,500	\$2,145,500	\$2,145,500	\$91,301	\$2,316,500	\$98,278
71	\$0	\$171,000	\$171,000	\$6,951	\$2,145,500	\$2,145,500	\$2,145,500	\$87,218	\$2,316,500	\$84,169
72	\$0	\$171,000	\$171,000	\$6,641	\$2,145,500	\$2,145,500	\$2,145,500	\$83,317	\$2,316,500	\$80,538
73	\$0	\$171,000	\$171,000	\$6,344	\$2,145,500	\$2,145,500	\$2,145,500	\$79,591	\$2,316,500	\$77,022
74	\$0	\$171,000	\$171,000	\$6,060	\$2,145,500	\$2,145,500	\$2,145,500	\$76,032	\$2,316,500	\$73,622
75	\$0	\$171,000	\$171,000	\$5,789	\$2,145,500	\$2,145,500	\$2,145,500	\$72,631	\$2,316,500	\$70,292
76	\$0	\$171,000	\$171,000	\$5,530	\$2,145,500	\$2,145,500	\$2,145,500	\$69,280	\$2,316,500	\$67,013
77	\$0	\$171,000	\$171,000	\$5,283	\$2,145,500	\$2,145,500	\$2,145,500	\$66,069	\$2,316,500	\$63,842
78	\$0	\$171,000	\$171,000	\$5,046	\$2,145,500	\$2,145,500	\$2,145,500	\$62,980	\$2,316,500	\$60,797
79	\$0	\$171,000	\$171,000	\$4,821	\$2,145,500	\$2,145,500	\$2,145,500	\$60,004	\$2,316,500	\$57,876
80	\$0	\$171,000	\$171,000	\$4,605	\$2,145,500	\$2,145,500	\$2,145,500	\$57,149	\$2,316,500	\$55,084
81	\$0	\$171,000	\$171,000	\$4,399	\$2,145,500	\$2,145,500	\$2,145,500	\$54,414	\$2,316,500	\$52,414
82	\$0	\$171,000	\$171,000	\$4,202	\$2,145,500	\$2,145,500	\$2,145,500	\$51,797	\$2,316,500	\$49,859
83	\$0	\$171,000	\$171,000	\$4,014	\$2,145,500	\$2,145,500	\$2,145,500	\$49,306	\$2,316,500	\$47,404
84	\$0	\$171,000	\$171,000	\$3,835	\$2,145,500	\$2,145,500	\$2,145,500	\$46,848	\$2,316,500	\$45,044
85	\$0	\$171,000	\$171,000	\$3,663	\$2,145,500	\$2,145,500	\$2,145,500	\$44,521	\$2,316,500	\$42,764
86	\$0	\$171,000	\$171,000	\$3,500	\$2,145,500	\$2,145,500	\$2,145,500	\$42,324	\$2,316,500	\$40,559
87	\$0	\$171,000	\$171,000	\$3,343	\$2,145,500	\$2,145,500	\$2,145,500	\$40,255	\$2,316,500	\$38,514
88	\$0	\$171,000	\$171,000	\$3,194	\$2,145,500	\$2,145,500	\$2,145,500	\$38,311	\$2,316,500	\$36,624
89	\$0	\$171,000	\$171,000	\$3,051	\$2,145,500	\$2,145,500	\$2,145,500	\$36,489	\$2,316,500	\$34,884
90	\$0	\$171,000	\$171,000	\$2,914	\$2,145,500	\$2,145,500	\$2,145,500	\$34,784	\$2,316,500	\$33,289
91	\$0	\$171,000	\$171,000	\$2,784	\$2,145,500	\$2,145,500	\$2,145,500	\$33,191	\$2,316,500	\$31,824
92	\$0	\$171,000	\$171,000	\$2,659	\$2,145,500	\$2,145,500	\$2,145,500	\$31,706	\$2,316,500	\$30,479
93	\$0	\$171,000	\$171,000	\$2,541	\$2,145,500	\$2,145,500	\$2,145,500	\$30,324	\$2,316,500	\$29,249
94	\$0	\$171,000	\$171,000	\$2,427	\$2,145,500	\$2,145,500	\$2,145,500	\$29,041	\$2,316,500	\$28,069
95	\$0	\$171,000	\$171,000	\$2,318	\$2,145,500	\$2,145,500	\$2,145,500	\$27,854	\$2,316,500	\$27,024
96	\$0	\$171,000	\$171,000	\$2,215	\$2,145,500	\$2,145,500	\$2,145,500	\$26,759	\$2,316,500	\$26,009
97	\$0	\$171,000	\$171,000	\$2,116	\$2,145,500	\$2,145,500	\$2,145,500	\$25,751	\$2,316,500	\$25,084
98	\$0	\$171,000	\$171,000	\$2,021	\$2,145,500	\$2,145,500	\$2,145,500	\$24,824	\$2,316,500	\$24,234
99	\$0	\$171,000	\$171,000	\$1,931	\$2,145,500	\$2,145,500	\$2,145,500	\$23,974	\$2,316,500	\$23,459
100	\$0	\$171,000	\$171,000	\$1,844	\$2,145,500	\$2,145,500	\$2,145,500	\$23,199	\$2,316,500	\$22,714
	\$5,670,804	\$738,161	\$2,082,727	\$69,614,417	\$28,025,627	\$16,929,000	\$124,060,737	\$101,433,673	\$115,375,769	\$69,704,931
									\$353,896,067	\$164,578,465

Attachment B

**Financial Assurance 2003 Dollar
Reduction Cost Estimate**

Attachment B Financial Assurance Current Dollar Cash Estimates for Tailing Areas

Average Layer Thickness (in)	Volume Top (cy)		Volume Slopes		Volume for Cover		Haul	Unit Cost	Cost Per Ton	Cost Per Slopes	Cost for Cover on Tons	Cont Runoff	Spillways	Seed & Mulch		Seed & Mulch Top	Seed & Mulch Slope	Contract Relief	Protect Ravines	V Ditches	Surface Drainageways	Total Direct Cost	Total Tally Cost	Total Without NMGRT
	24	24	24	24	24	24								24	24									
Lake One	0	0	0	0	0	0	0	\$1.36	\$0	\$0	\$0	\$14,272	\$88,432	\$189,276	\$0	\$0	\$0	\$0	\$0	\$0	\$0	\$1,365,770	\$4,899,851	\$4,545,636
Tailing Pond 1	432,375	80,627	748	0	0	0	0	21.38	\$88,784	\$1,020	\$1,020	26,693	353,975	386,802	386,802	386,802	386,802	386,802	386,802	386,802	386,802	587,212	\$1,288,835	\$1,039,399
Tailing Pond 2	387,200	96,800	838	0	0	0	0	7.38	\$282,105	\$1,284	\$1,284	27,784	346,286	359,823	359,823	359,823	359,823	359,823	359,823	359,823	359,823	582,998	\$1,233,170	\$104,149
Axiflo Lake	381,947	3,480	371	0	0	0	0	11.36	\$31,121	\$1,304	\$1,304	35,709	33,381	34,685	34,685	34,685	34,685	34,685	34,685	34,685	34,685	\$21,080	\$73,710	\$68,555
Tailing Pond A	574,127	197,690	2,761	0	0	0	0	11.36	\$64,732	\$1,284	\$1,284	35,709	31,847	31,847	31,847	31,847	31,847	31,847	31,847	31,847	31,847	\$1,384,649	\$2,080,571	\$1,652,949
Tailing Pond B	316,313	151,690	3,399	0	0	0	0	11.36	\$36,132	\$1,284	\$1,284	35,709	31,847	31,847	31,847	31,847	31,847	31,847	31,847	31,847	31,847	\$1,074,173	\$1,377,125	\$1,072,702
Tailing Pond C	1,028,082	144,913	3,804	0	0	0	0	11.36	\$115,657	\$1,284	\$1,284	35,709	31,847	31,847	31,847	31,847	31,847	31,847	31,847	31,847	31,847	\$2,040,928	\$2,999,350	\$2,533,585
Tailing Pond 6 West	1,051,840	277,493	4,022	0	0	0	0	11.36	\$118,066	\$1,284	\$1,284	35,709	31,847	31,847	31,847	31,847	31,847	31,847	31,847	31,847	31,847	\$2,040,928	\$2,999,350	\$2,533,585
Tailing Pond 6 East	1,148,693	213,229	4,356	0	0	0	0	11.36	\$125,889	\$1,284	\$1,284	35,709	31,847	31,847	31,847	31,847	31,847	31,847	31,847	31,847	31,847	\$2,040,928	\$2,999,350	\$2,533,585
Tailing Pond 7	3,865,547	1,172,213	15,313	0	0	0	0	11.36	\$5,272,847	\$1,606,503	\$20,888	\$77,715	\$481,660	\$592,133	\$1,811,862	\$3,000,609	\$3,000,609	\$3,000,609	\$3,000,609	\$3,000,609	\$3,000,609	\$1,541,446	\$13,046,512	\$11,505,066
Total	9,128,240	2,403,867	34,041	0	0	0	0	11.36	\$17,451,489	\$1,279,024	\$46,434	\$1,971,731	\$1,223,840	\$1,520,003	\$3,711,401	\$673,581	\$3,711,401	\$3,711,401	\$3,711,401	\$3,711,401	\$3,711,401	\$34,205,888	\$33,116,936	\$31,628,415
Borrow Area (SF)	2,829	745	715	0	0	0	0																	
Acres	74,648,248	6,092,480	149	0	0	0	0																	

Facilities	Breakdown Cover	Outslope	Seed	Channels	Total Without NMGRT	Proposed FA Reduction 2014
Lake One	\$4,269,817	\$0	\$152,751	\$143,069	\$4,345,636	\$4,392,885
Tailing Pond 1	\$976,098	\$31,483	\$110,398	\$99,588	\$1,107,567	\$0
Tailing Pond 2	\$921,080	\$37,777	\$104,149	\$92,973	\$1,044,149	\$0
Axiflo Lake	\$558,273	\$3,778	\$63,183	\$58,721	\$683,955	\$0
Tailing Pond B	\$1,464,195	\$75,554	\$165,249	\$165,249	\$1,652,249	\$0
Tailing Pond C	\$975,003	\$75,554	\$109,703	\$130,210	\$1,097,037	\$0
Tailing Pond 4	\$2,222,603	\$55,407	\$251,345	\$259,747	\$2,531,345	\$0
Tailing Pond 6 West	\$2,614,045	\$105,295	\$229,088	\$235,270	\$2,853,270	\$0
Tailing Pond 6 East	\$2,631,896	\$90,665	\$297,171	\$279,654	\$2,921,171	\$0
Tailing Pond 7	\$7,610,148	\$459,623	\$1,052,228	\$2,063,007	\$9,125,006	\$0
Total	\$22,250,652	\$939,134	\$2,634,265	\$4,053,736	\$27,608,415	\$4,392,885

Attachment C

**Proposed Modifications to Financial Assurance
Cash Flow and NPV Calculation**

Attachment C - China Mines Company
 CCP Cash Flow and NPV Table - Proposed Financial Assurance Release for Lake One 2014 Reduction

Year	After FA Reduction:	Before FA Reduction:	Charges:	NPV
37			\$2,343	\$2,316,500
38			\$1,194	\$2,145,500
39			\$2,914	\$2,145,500
40			\$2,784	\$2,145,500
41			\$2,559	\$2,145,500
42			\$2,541	\$2,145,500
43			\$2,427	\$2,145,500
44			\$2,318	\$2,145,500
45			\$2,215	\$2,145,500
46			\$2,116	\$2,145,500
47			\$1,931	\$2,145,500
48			\$1,844	\$2,145,500
49			\$1,860,600	\$2,145,500
50	\$5,570,854	\$33,632,741	\$2,682,272	\$2,145,500
			\$15,375,798	\$2,145,500
			\$26,435,489	\$2,145,500
			\$69,794,931	\$2,145,500
			\$356,113,320	\$2,145,500
			\$166,885,531	\$2,145,500

Date: 19-Nov-2014

GR009RE 12-2 FA Summary (2012 FA)

Component	Current Cost	NPV
Earthwork	\$ 124,060,736	\$ 101,433,672
Water Treatment Plant (WTP)	\$ 236,445,469	\$ 69,704,931
Studies	\$ 471,300	\$ 471,300
Cover Material Handling	\$ 3,662,430	\$ 3,662,430
Total	\$ 364,639,935	\$ 175,272,333

2014 Proposed Release for GR009RE FA

Component	Current Cost	NPV
Earthwork	\$ 119,667,851	\$ 97,180,600
Water Treatment Plant (WTP)	\$ 236,445,469	\$ 69,704,931
Studies	\$ 471,300	\$ 471,300
Cover Material Handling	\$ 3,662,430	\$ 3,662,430
Total	\$ 360,247,050	\$ 171,019,261

Proposed FA Reduction Total: \$ 4,392,885 \$ 4,253,072

Note:

The total proposed FA reduction for tailing reclamation of \$4,392,885 was distributed evenly over a six year period in the 2014 cash flow to come up with the NPV calculation of \$4,253,072

Attachment D
Financial Assurance Release Cost Estimate (in 2003 dollars): for Lake One,
Aerial Photos and Maps

Attachment D Financial Assurance Release Cost Calculation

Scope of Work Completed: Lake 1

Chino Tailings Area

Lake One	Current FA	Proposed FA Reduction	Remaining FA
Cover (top and slopes)	\$4,249,817	\$4,249,817	\$0
Outslope (construct relief)	\$0	\$0	\$0
Revegetation 100% (seeding)	\$152,751	\$0	\$152,751
Channels	\$143,069	\$143,069	\$0
Total =	\$4,545,636	\$4,392,885	\$152,751

Total 2014 Proposed Financial Assurance Release:

\$4,392,885

Note:

The total proposed FA reduction for tailing reclamation of \$4,392,885 was distributed evenly over a six year period in the 2003 cash flow to come up with the NPV calculation of \$4,682,716

Oblique Aerial Photos of Lake One Reclamation Project



September 10, 2014 - View North to South – Lake One



September 10, 2014 - View Northeast to Southwest – Lake One and Slag Pile



September 10, 2014 - View Southwest to Northeast – of Lake One



September 10, 2014 – View East to West – Lake One and Slag Pile

Project Lake One Completion Facts

Project Name: Chino Tailing Reclamation – Lake One

Construction/Activity Start Date: April, 2013

Construction/Activity Completion Date: August, 2014

Lake One Original FA Acres Completed: 220 acres

Total Acres Reclaimed: 249 acres

Volume of Cover Material: 1,500,000 cubic yards

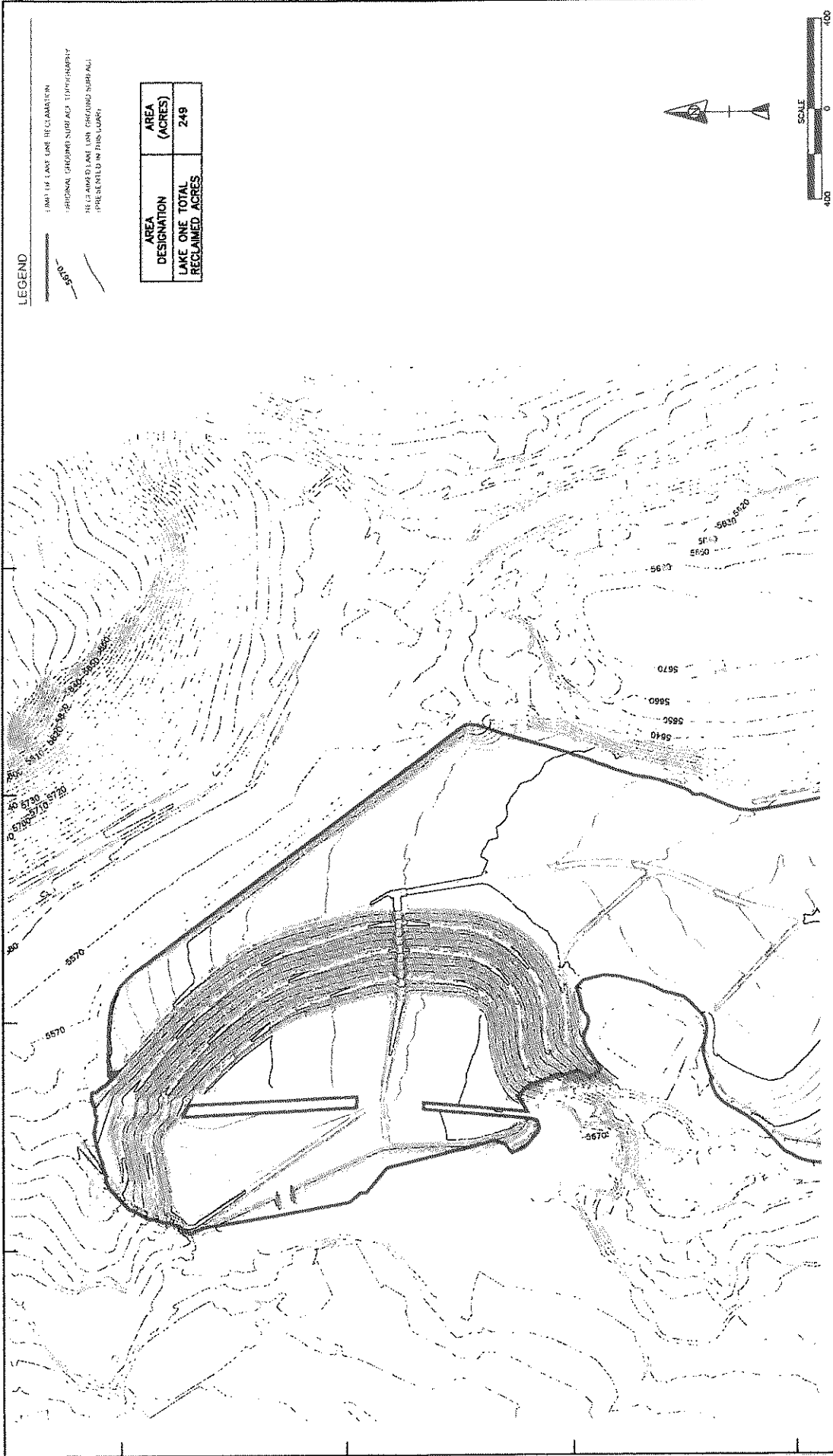
Linear Feet of Stormwater Conveyance Completed: 21,100 Linear Feet

Description of Work Completed:

Reclamation work completed for this project included the regrading, covering, and revegetation of Lake One. The construction met the following specifications and design:

- Outslope – 3H:1V or less
- Interbench Slope Length – 150 ft. long or less
- Top Surfaces – Minimum of 0.5 %
- Surface Channels - Minimum of 0.5 %
- Outslope Channels – 2 to 5 %
- Cover thickness – Minimum of 3 ft.
- Cover Material – Gila Conglomerate or Alluvium
- Rip Rap Material – Gila Alluvium or Limestone
- Seed Mix –Native seed mix composed of cool and warm grasses, perennial shrubs and forbs

Reclamation inspections were conducted at least monthly by the State of New Mexico during construction and Chino met all permit and Construction Design Quality Assurance Plan (CDQAP – final design) requirements.



LEGEND

- 100' EASEMENT
- 20' EASEMENT
- 10' EASEMENT
- 5' EASEMENT
- 0' EASEMENT

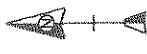
AREA DESIGNATION	AREA (ACRES)
LAKE ONE TOTAL RECLAIMED ACRES	249

NO.	DATE	CADD	CHK'D	APP'D	ISSUE / REVISION DESCRIPTION
					
PROJECT		CHIRO MINES COMPANY HURLEY NEW MEXICO LAKE ONE RECLAMATION			
TYPE		Lake One Reclamation			
DRAWN		Map 2			
SCALE		1" = 200'			

LEGEND

- 1. HATCHED AREA USE RECLAMATION
- 2. ORIGINAL GROUND SURFACE TOPOGRAPHY
- 3. RECLAIMED LAKE TONE DRAINING TO THE ACD
- 4. 5% SLOPE IN THIS DRAIN

AREA DESIGNATION	AREA (ACRES)
LAKE ONE TOTAL RECLAIMED ACRES	249



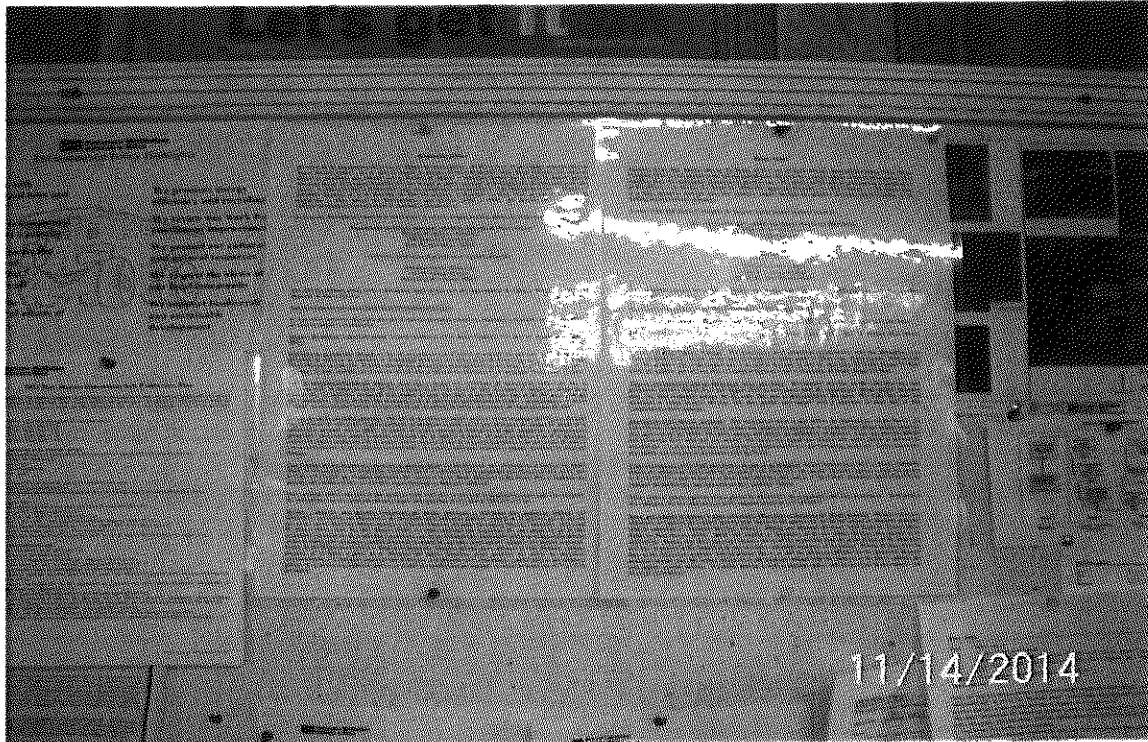
CHINO MINES COMPANY
 HURLEY, NEW MEXICO
 LAKE ONE RECLAMATION
 Lake One Reclamation
Map 3

NO.	DATE	CADD	CHKD	APPR	ISSUE / REVISION / DESCRIPTION

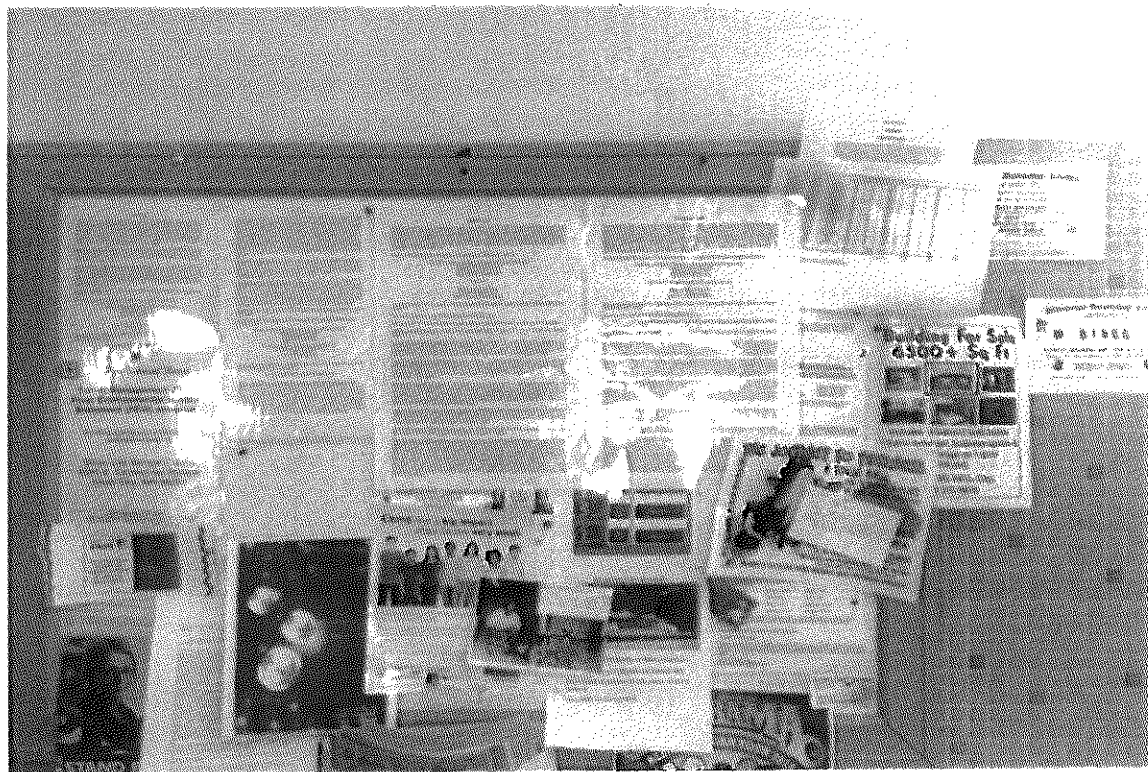
PREPARED BY:
 CHINO MINES COMPANY
 PROJECT TITLE:
 LAKE ONE RECLAMATION

Attachment E
Public Notice Documentation

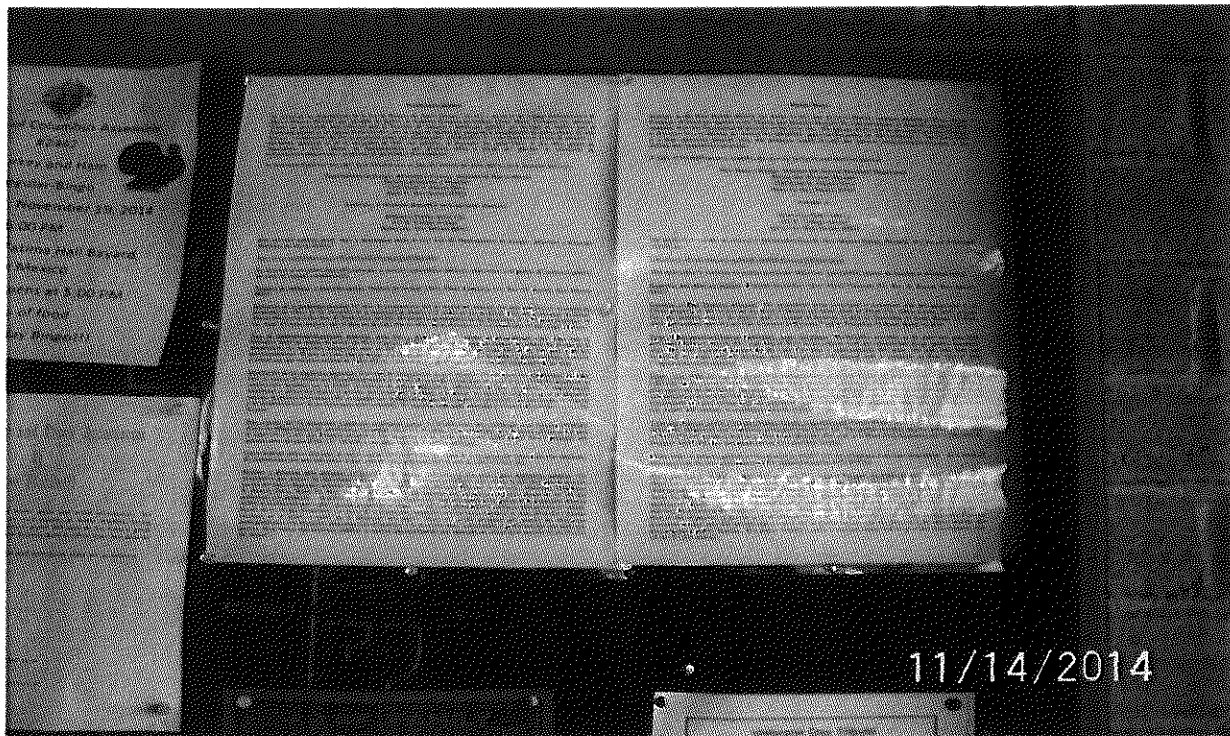
Chino 2014 Financial Assurance Public Notice Verification



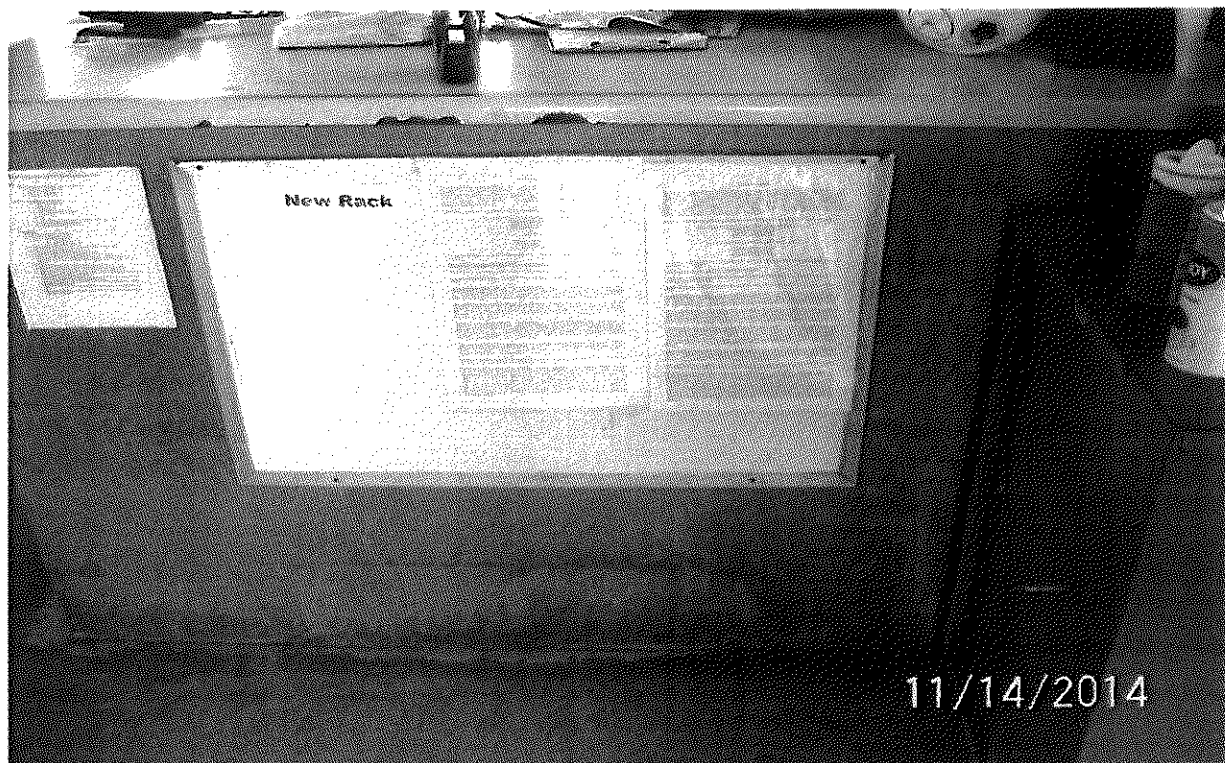
November 14, 2014 Chino Mine Main Gate (Security Building)



November 14, 2014 Bayard, NM Post Office



November 14, 2014 Hurley, NM Post office



November 14, 2014 Hurley, NM North Gate (Security Building)

Notificación pública

En virtud de las disposiciones de la Ley de Minería de Nuevo México, 19.10.5 y 19.10.12 del Código Administrativo de Nuevo México (NM por su sigla en inglés), la empresa Freeport-McMoRan Chino Mines Company (en adelante, Chino) ha presentado una solicitud ante la División de Minería y Minerales (MMD, por su sigla en inglés), para la liberación parcial de un seguro financiero (FA, por su sigla en inglés) que se refiere a la recuperación de ciertas partes del sitio minero. La liberación del FA se procesará como una modificación a la Revisión 01-1 del Permiso de la Ley de Minería n.º GR009RE aprobado el 18 de diciembre de 2003 (en adelante, el Permiso). La mina Chino es una mina grande de explotación a cielo abierto en funcionamiento que produce cobre a través del proceso de extracción de solución/electrodeposición o el proceso de molienda y concentración.

Se encuentra disponible una copia de la solicitud para su consulta durante las horas hábiles en la siguiente dirección:

Departamento de Energía, Minerales y Recursos Naturales de Nuevo México
División de Minería y Minerales
1220 South St. Francis Drive
Santa Fe, New Mexico 87505

Asimismo, se encuentra disponible en la siguiente dirección:

Biblioteca Pública Silver City
515 W. College Avenue
Silver City, New Mexico 88061

Esta solicitud también puede verse o descargarse desde el sitio web del Departamento de Energía, Minerales y Recursos Naturales de Nuevo México:

<http://www.emnrd.state.nm.us/MMD/MARP/PermitGR009RE.html>

La solicitud se encuentra disponible para que se realicen comentarios públicos, objeciones y un pedido de audiencia pública tal como se estipula en la continuación.

Tenedor del permiso y domicilio postal: Freeport-McMoRan Chino Mines Company P.O. Box 10, Bayard, New Mexico 88023.

Ubicación de la propiedad afectada: La obra de recuperación que se realizó en relación con esta solicitud se encuentra en propiedad de Chino en las cercanías de la localidad de Hurley (15 millas al sur de Silver City, en el condado de Grant, Nuevo México) en Lake One. El límite norte del proyecto se encuentra en las Secciones 31 y 32, en el municipio 18 sur, rango 12 oeste, mientras que el área sur de Lake One se ubica en las Secciones 5 y 6, municipio 19 sur, rango 12 oeste.

Tipo de recuperación/liquidación realizada, acres (ha) y fechas: Las actividades de recuperación sobre Lake One se realizaron entre los meses de marzo de 2013 y agosto de 2014 en virtud del plan de control de calidad del diseño de la construcción. La superficie recuperada total medida en acres (ha) para el área de Lake One es de 249 acres (100 ha) aproximadamente. El área de Lake One se recuperó a fin de obtener un escrutinio favorable y, posteriormente, se niveló y rellenó con una cantidad mínima de 3 pies (91,44 cm) de material de relleno proveniente del conglomerado del Gila.

Descripción de los resultados obtenidos: Esta obra de recuperación cumple en parte con los requisitos del Permiso. En Lake One, el sistema de relleno por evapotranspiración se diseñó de acuerdo con el plan de control de calidad del diseño de la construcción aprobado por la MMD. El sistema de relleno reducirá la infiltración de agua superficial, y proporcionará estabilidad y protección contra la erosión provocada por el viento y la lluvia. Se surcó el relleno y en él se plantaron semillas de plantas autóctonas a fin de cumplir con el requisito de uso de la superficie posterior a las actividades de minería y de restablecimiento de un ecosistema autosustentable. Se seguirán realizando controles y estudios de relleno en virtud del Permiso.

Tipo y monto del FA presentado y parte que se pretende emitir: La Modificación 06-2 efectuada en el Permiso GR009RE detalla las obligaciones y las condiciones vinculadas con el FA de Chino. En la actualidad, este Permiso solicita un FA total de USD 175 272 333 que Freeport-McMoRan Inc. conserva en un fondo fiduciario (USD 64 042 304) y mediante una garantía sobre terceros (USD 111 230 029) y que administra un fiduciario calificado.

Chino pretende reducir una parte de este monto en USD 4 253 072; en virtud de la recuperación sobre Lake One efectuada. De conformidad con esta reducción, el nuevo monto total solicitado del FA será de USD 171 019 261.

Nombre y dirección para presentar comentarios por escrito, objeciones o solicitudes para audiencias públicas: Los comentarios por escrito, las objeciones o las solicitudes para audiencias públicas respecto de la solicitud para la emisión parcial del seguro financiero deberán enviarse a Fernando Martínez, Director, División de Minería y Minerales, 1220 South St. Francis Drive, Santa Fe, New Mexico 87505.

Public Notice

Application pursuant to the New Mexico Mining Act Rules, 19.10.5 and 19.10.12 NMAC, Freeport-McMoRan Chino Mines Company (Chino) has applied to the Mining and Minerals Division for a partial release of financial assurance (FA) resulting from the reclamation of lands of the mine site. The release of FA will be processed as a modification to Revision 01-1 to Mining Act Permit No. GR009REV dated December 18, 2003 ("Permit"). The Chino Mine is a large operating open-pit mine that produces copper through the solution extraction/electrowinning or the milling and concentrator processes.

The application is available for viewing during normal business hours at:

New Mexico Energy, Minerals and Natural Resources Department
Mining and Minerals Division
1220 South St. Francis Drive
Santa Fe, New Mexico 87505

And also at:

Silver City Public Library
515 W. College Avenue
Silver City, New Mexico 88061

The application can also be viewed or downloaded from the New Mexico Energy, Minerals, and Natural Resources website at:

www.emnrd.state.nm.us/MMD/MARP/PermitGR009RE.html

The application is available for public comments, objections and a public request for hearing as provided below.

Committee and Mailing Address: Freeport-McMoRan Chino Mines Company P.O. Box 10, Bayard, New Mexico 88023.

Location of Real Property Affected: The reclamation work completed in connection with this application is on Chino property in the vicinity of the town of Hurley (15 miles south of Silver City, Grant County, NM) at Lake One, the northern end of the project area is located in Sections 31 and 32, Township 18 South, Range 12 West, while the southern part of Lake One is located in Sections 5 and Township 19 South, Range 12 West.

Work of Reclamation/Closeout Performed, Acres and Dates: Reclamation activities on the Lake One area were performed between March 2013 and August 2014 in accordance with the construction design quality assurance plan. The total reclaimed acreage for the Lake One area is approximately 249 acres. The Lake One area was reclaimed to create positive drainage and then graded and capped with a minimum of three feet of Gila Conglomerate cover material.

Description of the Results Achieved: This reclamation work in part fulfills the requirements of the Permit. On Lake One an evaporation cover system was engineered according to a construction design quality assurance plan approved by the MMD. The cover system will reduce the infiltration of meteoric water and provide stability and protection from wind and rain erosion. The cover is planted and seeded with native plants to achieve the requirement of a post mining land use and the re-establishment of a self-sustaining ecosystem. Cover inspections and studies will continue in accordance with the Permit.

Cost and Amount of FA Filed and Portion Sought to be Released: Permit Modification 06-2 to Permit GR009REV details the obligations and conditions associated with Chino FA. The permit currently requires a total FA amount of \$175,272,333 which is held in a FA Fund (\$64,042,304) and in a Third Party Guarantee (\$111,230,029) by Freeport-McMoRan Inc. and administered by a qualified trustee.

The applicant seeks to reduce a portion of this amount by \$4,253,072; for completed Lake One reclamation. As a result of this reduction, the total amount of FA required would be \$171,019,261.

Where and Address to Submit Written Comments, Objections or Requests for Public Hearings: Written comments, objections or requests for a public hearing with regard to the application for partial release of financial assurance shall be submitted to: Fernando Martinez, Director, Mining and Minerals Division, 1220 South St. Francis Drive, Santa Fe, New Mexico 87505. MMD will conduct

Legal

Public Notice

Pursuant to the New Mexico Mining Act Rules, 19.10.5 and 19.10.12 NMAC, Freeport-McMoRan Chino Mines Company (Chino) has applied to the Mining and Minerals Division for a partial release of financial assurance (FA) resulting from the reclamation of portions of the mine site. The release of FA will be processed as a modification to Revision 01-1 to Mining Act Permit No. GR009RE approved December 18, 2003 ("Permit"). The Chino Mine is a large operating open-pit mine that produces copper through the solution extraction/electrowinning or the milling and concentrator processes.

A copy of the application is available for viewing during normal business hours at:

New Mexico Energy, Minerals and Natural Resources Department
Mining and Minerals Division
1220 South St. Francis Drive
Santa Fe, New Mexico 87505

And also at:

Silver City Public Library
515 W. College Avenue
Silver City, New Mexico 88061

The application can also be viewed or downloaded from the New Mexico Energy, Minerals, and Natural Resources website at:

<http://www.emnrd.state.nm.us/MMD/MARP/PermitGR009RE.html>

This application is available for public comments, objections and a public request for hearing as provided below.

Permittee and Mailing Address: Freeport-McMoRan Chino Mines Company P.O. Box 10, Bayard, New Mexico 88023.

Location of Real Property Affected: The reclamation work completed in connection with this application is on Chino property in the vicinity of the town of Hurley (15 miles south of Silver City, Grant County, NM) at Lake One, the northern end of the project area is located in Sections 31 and 32, Township 18 South, Range 12 West, while the southern part of Lake One is located in Sections 5 and 6, Township 19 South, Range 12 West.

Type of Reclamation/Closeout Performed, Acres and Dates: Reclamation activities on the Lake One area were performed between March 2013 and August 2014 in accordance with the construction design quality assurance plan. The total reclaimed acreage for the Lake One area is approximately 249 acres. The Lake One area was reclaimed to create positive drainage and then graded and capped with a minimum of three feet of Gila Conglomerate cover material.

Description of the Results

provide stability and protection from wind and rain erosion. The cover was ripped and seeded with native plants to achieve the requirement of a post mining land use and the re-establishment of a self-sustaining ecosystem. Cover inspections and studies will continue in accordance with the Permit.

Type and Amount of FA Filed and Portion Sought to be Released: Permit Modification 06-2 to Permit GR009RE details the obligations and conditions associated with Chino FA. The permit currently requires a total FA amount of \$175,272,333 which is held in a Trust Fund (\$64,042,304) and in a Third Party Guarantee (\$111,230,029) by Freeport-McMoRan Inc. and administered by a qualified Trustee. Chino seeks to reduce a portion of this amount by \$4,253,072; for completed Lake One reclamation. As a result of this reduction, the new total amount of FA required would be \$171,019,261.

Name and Address to Submit Written Comments, Objections or Requests for Public Hearings: Written comments, objections or requests for a public hearing with regard to the application for partial release of financial assurance shall be submitted to: Fernando Martinez, Director, Mining and Minerals Division, 1220 South St. Francis Drive, Santa Fe, New Mexico 87505. MMD will conduct an inspection of the site within 30 days after receipt of the application. Persons who have requested advance notice of the inspection shall be given notice of the inspection and may be present at the inspection as may any other interested members of the public. Within 30 days from the date of the inspection, a person with an interest that is or will be adversely affected by the proposed financial assurance release may file written objections to the proposed release with the Director at the above address and may request a public hearing. If a public hearing is held, a separate notice will be provided in accordance with 19.10.12.1210 NMAC.

N17

Legal

The Bayard Housing Authority Board of Commissioners has scheduled a Regular Meeting on Wednesday, November 26, 2014 at 4:00 p.m. at the office located at 100 Runnels Drive, Bayard, NM. A copy of the agenda will be available at the Housing Authority Office. The meeting is opened to the public.

If you are an individual with a disability who is in need of a reader, amplifier, qualified

Legal

Notificación pública

En virtud de las disposiciones de la Ley de Minería de Nuevo México, 19.10.5 y 19.10.12 del Código Administrativo de Nuevo México (NMAC, por su sigla en inglés), la empresa Freeport-McMoRan Chino Mines Company (en adelante, Chino) ha presentado una solicitud ante la División de Minería y Minerales (MMD, por su sigla en inglés), para la liberación parcial de un seguro financiero (FA, por su sigla en inglés) que surge de la recuperación de ciertas partes del sitio minero. La liberación del FA se procesará como una modificación a la Revisión 01-1 del Permiso de la Ley de Minería n.º GR009RE aprobado el 18 de diciembre de 2003 (en adelante, el Permiso). La mina Chino es una mina grande de explotación a cielo abierto en funcionamiento que produce cobre a través del proceso de extracción de solución/electrodeposición o el proceso de molienda y concentración.

Se encuentra disponible una copia de la solicitud para su consulta durante las horas hábiles en la siguiente dirección:

Departamento de Energía,
Minerales y Recursos
Naturales de Nuevo México
División de Minería y
Minerales
1220 South St. Francis Drive
Santa Fe, New Mexico 87505

Asimismo, se encuentra disponible en la siguiente dirección:

Biblioteca Pública Silver City
515 W. College Avenue
Silver City, New Mexico 88061

Esta solicitud también puede verse o descargarse desde el sitio web del Departamento de Energía, Minerales y Recursos Naturales de Nuevo México: <http://www.emnrd.state.nm.us/MMD/MARP/PermitGR009RE.html>

La solicitud se encuentra disponible para que se realicen comentarios públicos, objeciones y un pedido de audiencia pública tal como se estipula a continuación.

Tenedor del permiso y domicilio postal: Freeport-McMoRan Chino Mines Company P.O. Box 10, Bayard, New Mexico 88023.

Ubicación de la propiedad afectada: La obra de recuperación que se realizó en relación con esta solicitud se encuentra en propiedad de Chino en las cercanías de la localidad de Hurley (15 millas al sur de Silver City, en el condado de Grant, Nuevo México) en Lake One. El límite norte del área del

Y fechas: Las actividades de recuperación sobre Lake One se realizaron entre los meses de marzo de 2013 y agosto de 2014 en virtud del plan de control de calidad del diseño de la construcción. La superficie recuperada total medida en acres (ha) para el área de Lake One es de 249 acres (100 ha) aproximadamente. El área de Lake One se recuperó a fin de obtener un escurrimiento favorable y, posteriormente, se niveló y relleno con una cantidad mínima de 3 pies (91,44 cm) de material de relleno proveniente del conglomerado del Gila.

Descripción de los resultados obtenidos: Esta obra de recuperación cumple en parte con los requisitos del Permiso. En Lake One, el sistema de relleno por evapotranspiración se diseñó de acuerdo con el plan de control de calidad del diseño de la construcción aprobado por la MMD. El sistema de relleno reducirá la infiltración de agua superficial, y proporcionará estabilidad y protección contra la erosión provocada por el viento y la lluvia. Se surcó el relleno y en él se plantaron semillas de plantas autóctonas a fin de cumplir con el requisito de uso de la superficie posterior a las actividades de minería y de restablecimiento de un ecosistema autosustentable. Se seguirán realizando controles y estudios de relleno en virtud del Permiso.

Tipo y monto del FA presentado y parte que se pretende emitir: La Modificación 06-2 efectuada en el Permiso GR009RE detalla las obligaciones y las condiciones vinculadas con el FA de Chino. En la actualidad, este Permiso solicita un FA total de USD 175 272 333 que Freeport-McMoRan Inc. conserva en un fondo fiduciario (USD 64 042 304) y mediante una garantía sobre terceros (USD 111 230 029) y que administra un fiduciario calificado.

Chino pretende reducir una parte de este monto en UDS 4 253 072; en virtud de la recuperación sobre Lake One efectuada. De conformidad con esta reducción, el nuevo monto total solicitado del FA será de USD 171 019 261.

Nombre y dirección para presentar comentarios por escrito, objeciones o solicitudes para audiencias públicas: Los comentarios por escrito, las objeciones o las solicitudes para audiencias públicas respecto de la solicitud para la emisión parcial del seguro financiero deberán enviarse a: Fernando Martinez, Director, División de Minería y Minerales, 1220 South St. Francis Drive, Santa Fe, New Mexico 87505. La



Freeport-McMoRan Chino Mines Company
P.O. Box 10
Bayard, NM 88023

November 17, 2014

Via Certified Mail

Dear Neighbor:

Re: Chino Mines Company, Permit No. GR009RE Revision 01-1, Notice of Permit Modification Application For Partial Financial Assurance Release

Freeport-McMoRan Chino Mines Company (Chino) has applied to the New Mexico Energy, Minerals and Natural Resources Department, Mining and Minerals Division for a modification of the referenced permit. The modification requests a partial release of financial assurance required for reclamation. The proposed release is for work that Chino has completed. As a nearby property owner or interested party, you are being provided the attached copy of the public notice concerning this modification request.

If you have any questions, please feel free to contact the New Mexico Energy, Minerals and Natural Resources Department in Santa Fe at (505) 476-3438 or Lynn Lande at (575) 912-5235.

Sincerely,

A handwritten signature in cursive script that reads 'Lynn A. Lande'. Below the signature, the word 'FOR' is written in a simple, blocky font.

Thomas L. Shelley, Manager
Reclamation

TLS: dha
Attachments
20141112-001

Public Notice

Pursuant to the New Mexico Mining Act Rules, 19.10.5 and 19.10.12 NMAC, Freeport-McMoRan Chino Mines Company (Chino) has applied to the Mining and Minerals Division for a partial release of financial assurance (FA) resulting from the reclamation of portions of the mine site. The release of FA will be processed as a modification to Revision 01-1 to Mining Act Permit No. GR009RE approved December 18, 2003 ("Permit"). The Chino Mine is a large operating open-pit mine that produces copper through the solution extraction/electrowinning or the milling and concentrator processes.

A copy of the application is available for viewing during normal business hours at:

New Mexico Energy, Minerals and Natural Resources Department
Mining and Minerals Division
1220 South St. Francis Drive
Santa Fe, New Mexico 87505

And also at:

Silver City Public Library
515 W. College Avenue
Silver City, New Mexico 88061

The application can also be viewed or downloaded from the New Mexico Energy, Minerals, and Natural Resources website at:

<http://www.emnrd.state.nm.us/MMD/MARP/PermitGR009RE.html>

This application is available for public comments, objections and a public request for hearing as provided below.

Permittee and Mailing Address: Freeport-McMoRan Chino Mines Company P.O. Box 10, Bayard, New Mexico 88023.

Location of Real Property Affected: The reclamation work completed in connection with this application is on Chino property in the vicinity of the town of Hurley (15 miles south of Silver City, Grant County, NM) at Lake One, the northern end of the project area is located in Sections 31 and 32, Township 18 South, Range 12 West, while the southern part of Lake One is located in Sections 5 and 6, Township 19 South, Range 12 West.

Type of Reclamation/Closeout Performed, Acres and Dates: Reclamation activities on the Lake One area were performed between March 2013 and August 2014 in accordance with the construction design quality assurance plan. The total reclaimed acreage for the Lake One area is approximately 249 acres. The Lake One area was reclaimed to create positive drainage and then graded and capped with a minimum of three feet of Gila Conglomerate cover material.

Description of the Results Achieved: This reclamation work in part fulfills the requirements of the Permit. On Lake One an evapotranspiration cover system was engineered according to a construction design quality assurance plan approved by the MMD. The cover system will reduce the infiltration of meteoric water and provide stability and protection from wind and rain erosion. The cover was ripped and seeded with native plants to achieve the requirement of a post mining land use and the re-establishment of a self-sustaining ecosystem. Cover inspections and studies will continue in accordance with the Permit.

Type and Amount of FA Filed and Portion Sought to be Released: Permit Modification 06-2 to Permit GR009RE details the obligations and conditions associated with Chino FA. The permit currently requires a total FA amount of \$175,272,333 which is held in a Trust Fund (\$64,042,304) and in a Third Party Guarantee (\$111,230,029) by Freeport-McMoRan Inc. and administered by a qualified Trustee.

Chino seeks to reduce a portion of this amount by \$4,253,072; for completed Lake One reclamation. As a result of this reduction, the new total amount of FA required would be \$171,019,261.

Name and Address to Submit Written Comments, Objections or Requests for Public Hearings: Written comments, objections or requests for a public hearing with regard to the application for partial release of financial assurance shall be submitted to: Fernando Martinez, Director, Mining and Minerals Division, 1220 South St. Francis Drive, Santa Fe, New Mexico 87505. MMD will conduct an inspection of the site within 30 days after receipt of the application. Persons who have requested advance notice of the inspection shall be given notice of the inspection and may be present at the inspection as may any other interested members of the public. Within 30 days from the date of the inspection, a person with an interest that is or will be adversely affected by the proposed financial assurance release may file written objections to the proposed release with the Director at the above address and may request a public hearing. If a public hearing is held, a separate notice will be provided in accordance with 19.10.12.1210 NMAC.

Notificación pública

En virtud de las disposiciones de la Ley de Minería de Nuevo México, 19.10.5 y 19.10.12 del Código Administrativo de Nuevo México (NMAC, por su sigla en inglés), la empresa Freeport-McMoRan Chino Mines Company (en adelante, Chino) ha presentado una solicitud ante la División de Minería y Minerales (MMD, por su sigla en inglés), para la liberación parcial de un seguro financiero (FA, por su sigla en inglés) que surge de la recuperación de ciertas partes del sitio minero. La liberación del FA se procesará como una modificación a la Revisión 01-1 del Permiso de la Ley de Minería n.º GR009RE aprobado el 18 de diciembre de 2003 (en adelante, el Permiso). La mina Chino es una mina grande de explotación a cielo abierto en funcionamiento que produce cobre a través del proceso de extracción de solución/electrodeposición o el proceso de molienda y concentración.

Se encuentra disponible una copia de la solicitud para su consulta durante las horas hábiles en la siguiente dirección:

Departamento de Energía, Minerales y Recursos Naturales de Nuevo México
División de Minería y Minerales
1220 South St. Francis Drive
Santa Fe, New Mexico 87505

Asimismo, se encuentra disponible en la siguiente dirección:

Biblioteca Pública Silver City
515 W. College Avenue
Silver City, New Mexico 88061

Esta solicitud también puede verse o descargarse desde el sitio web del Departamento de Energía, Minerales y Recursos Naturales de Nuevo México:

<http://www.emnrd.state.nm.us/MMD/MARP/PermitGR009RE.html>

La solicitud se encuentra disponible para que se realicen comentarios públicos, objeciones y un pedido de audiencia pública tal como se estipula a continuación.

Tenedor del permiso y domicilio postal: Freeport-McMoRan Chino Mines Company P.O. Box 10, Bayard, New Mexico 88023.

Ubicación de la propiedad afectada La obra de recuperación que se realizó en relación con esta solicitud se encuentra en propiedad de Chino en las cercanías de la localidad de Hurley (15 millas al sur de Silver City, en el condado de Grant, Nuevo México) en Lake One. El límite norte del área del proyecto se encuentra en las Secciones 31 y 32, en el municipio 18 sur, rango 12 oeste, mientras que el área sur de Lake One se ubica en las Secciones 5 y 6, municipio 19 sur, rango 12 oeste.

Tipo de recuperación/liquidación realizada, acres (ha) y fechas: Las actividades de recuperación sobre Lake One se realizaron entre los meses de marzo de 2013 y agosto de 2014 en virtud del

plan de control de calidad del diseño de la construcción. La superficie recuperada total medida en acres (ha) para el área de Lake One es de 249 acres (100 ha) aproximadamente. El área de Lake One se recuperó a fin de obtener un escurrimiento favorable y, posteriormente, se niveló y rellenó con una cantidad mínima de 3 pies (91,44 cm) de material de relleno proveniente del conglomerado del Gila.

Descripción de los resultados obtenidos: Esta obra de recuperación cumple en parte con los requisitos del Permiso. En Lake One, el sistema de relleno por evapotranspiración se diseñó de acuerdo con el plan de control de calidad del diseño de la construcción aprobado por la MMD. El sistema de relleno reducirá la infiltración de agua superficial, y proporcionará estabilidad y protección contra la erosión provocada por el viento y la lluvia. Se surcó el relleno y en él se plantaron semillas de plantas autóctonas a fin de cumplir con el requisito de uso de la superficie posterior a las actividades de minería y de restablecimiento de un ecosistema autosustentable. Se seguirán realizando controles y estudios de relleno en virtud del Permiso.

Tipo y monto del FA presentado y parte que se pretende emitir: La Modificación 06-2 efectuada en el Permiso GR009RE detalla las obligaciones y las condiciones vinculadas con el FA de Chino. En la actualidad, este Permiso solicita un FA total de USD 175 272 333 que Freeport-McMoRan Inc. conserva en un fondo fiduciario (USD 64 042 304) y mediante una garantía sobre terceros (USD 111 230 029) y que administra un fiduciario calificado.

Chino pretende reducir una parte de este monto en UDS 4 253 072; en virtud de la recuperación sobre Lake One efectuada. De conformidad con esta reducción, el nuevo monto total solicitado del FA será de USD 171 019 261.

Nombre y dirección para presentar comentarios por escrito, objeciones o solicitudes para audiencias públicas: Los comentarios por escrito, las objeciones o las solicitudes para audiencias públicas respecto de la solicitud para la emisión parcial del seguro financiero deberán enviarse a: Fernando Martinez, Director, División de Minería y Minerales, 1220 South St. Francis Drive, Santa Fe, New Mexico 87505. La MMD realizará una inspección del sitio dentro de los 30 días posteriores a la recepción de la solicitud. Las personas que hayan solicitado una notificación previa de la inspección deberán recibir la notificación pertinente y podrán presenciar la inspección así como podrá hacerlo cualquier otra persona interesada. Dentro de los 30 días posteriores a la fecha de la inspección, cualquier persona cuyos intereses se vean afectados o puedan afectarse en el futuro a partir de la liberación del seguro financiero podrá presentar por escrito las objeciones correspondientes a la liberación propuesta ante el Director, a la dirección antes mencionada, y podrá solicitar una audiencia pública. Si se realiza una audiencia pública, se emitirá una notificación por separado en virtud de la sección 19.10.12.1210 del NMAC.

JOHN & Yolanda ABREU
3209 NEPTUNE DR
LAS CRUCES, NM 880127729

GINNY ACHIN
223 CHUCKWAGON RD
LUBBOCK, TX 79404

ALBERT AGUILERA
PO BOX 2385
SILVER CITY, NM 88062

FRANCISCO & Pilar AGUILERA
PO BOX 615
HURLEY, NM 88043

LAWRENCE & Rebecca AGUILERA
PO BOX 598
HURLEY, NM 88043

MARGARET ALCAREZ ETAL
803 ORANGE STREET
SANTA ANA, CA 92701

BENJAMIN & TERESA ALVARADO
PO BOX 304
HANOVER, NM 88041

ROMAN ALVARADO
PO BOX 42
BAYARD, NM 88023

AMBANK
PO BOX 2677
SILVER CITY, NM 88062

AMERICAN ANDALUSIAN ASSOCIATION
PO BOX 1290
SILVER CITY, NM 88062

AMERICAN LEGION RED METAL POST
PO BOX 174
HURLEY, NM 88043

RITO & BETTY APODACA
PO BOX 402
BAYARD, NM 88023

MARIA & VANESSA ARCIERO
PO BOX 5
HANOVER, NM 88041

MARY LOU ARIAS
PO BOX 145
VANADIUM, NM 88023

EDDIE & MARY ARMENDARIZ
PO BOX 1132
KEARNEY, AZ 85237

GAVINO ARMENDARIZ
PO BOX 726
BAYARD, NM 88023

CHRISTINA SANDOVAL & EVANGELINE
ARREY
PO BOX 953
BAYARD, NM 88023

ROSEMARY AND HECTOR ARZATE
HC 71 BOX 1529
HANOVER, NM 88041

ARMANDO ARZOLA
PO BOX 127
BAYARD, NM 88023

NARCISO AVILA
PO BOX 618
BAYARD, NM 88023

ANTONIA BACA
PO BOX 578
HURLEY, NM 88043

JIMMY & DELLA BACA
PO BOX 842
HURLEY, NM 88043

RUDOLPH BACA
PO BOX 578
HURLEY, NM 88043

ROBERT & SANDRA BAGLEY
PO BOX 316
HANOVER, NM 88041

BAPTIST CHURCH BAPTIST
PO BOX 283
SANTA CLARA, NM 88026

DENNIS O'DAY BAXTER
16 ACORN DRIVE
SILVER CITY, NM 88061

BAYARD B&E HARDWARE & FLOORING
5022 COTTONWOOD ROAD
SILVER CITY, NM 88061

TYSON AND SHERRI BAYS
PO BOX 2982
SILVER CITY, NM 88062

FELIPE BECERRA
BOX 32
HANOVER, NM 88041

JOHN THOMAS BEERS
PO BOX 1965
SILVER CITY, NM 88062

ELSIE BELTRAN
PO BOX 702
SANTA CLARA, NM 88026

VANDER BEVILL
HC 71 BOX 9
HANOVER, NM 88041

DAWNA BLACKMAN
PO BOX 1395
BAGDAD, AZ 86321

AMANDA LEA BLOUNT
PO BOX 131
BAYARD, NM 88023

ALBERT & GENEVIEVE BORUNDA
PO BOX 92
HANOVER, NM 88041

JOYCE BRADBERRY
PO BOX 1305
BAYARD, NM 88023

LAURA BREED
106 FIERRO RD
HANOVER, NM 88041

JOHN BRIGGS
HC 68 BOX 810
HANOVER, NM 88041

RANDAL & OLIVIA BRITTON
PO BOX 2531
SILVER CITY, NM 88062

ALEX & REBECCA BROWN
PO BOX 398
HURLEY, NM 88043

NIKI BURNS
ANGKARRSGATAN 3, 17170
SOLNA SWEDEN,

JACINTO CARDENAS
PO BOX 934
BAYARD, NM 88023

EDUARDO CARRASCO
MC: 3F-09
SEATTLE, WA 98124

ROBERT & YVONNE CARRILLO
PO BOX 426
BAYARD, NM 88023

NICOLAS & LYDIA CASTILLO
PO BOX 798
SILVER CITY, NM 88062

VICENTE & MARIA CASTILLO
PO BOX 122
HANOVER, NM 88041

VICENTE CASTILLO
PO BOX 122
HANOVER, NM 88041

YVONNE CASTILLO
PO BOX 565
HURLEY, NM 88043

DIOCESE CATHOLIC
1280 MEDPARK DRIVE
LAS CRUCES, NM 88005

EVA CHACON
PO BOX 1376
BAYARD, NM 88023

GARY RODRIGUEZ & GINA CHACON
190 NORTH HURLEY ROAD
HURLEY, NM 88043

ARTHUR CHAVEZ
199 NORTH HURLEY ROAD
HURLEY, NM 88043

DIANE CHAVEZ
PO BOX 355
HANOVER, NM 88041

JOSEPH CHAVEZ
PO BOX 94
SANTA CLARA, NM 88026

LUCY CHAVEZ
860 CORRAL ST SW
LOS LUNAS, NM 87031

MANUEL CHAVEZ
PO BOX 624
HURLEY, NM 88043

RAYMOND CHAVEZ
PO BOX 111
HURLEY, NM 88043

RAYMOND CHAVEZ
PO BOX 239
HURLEY, NM 88043

RUFINA CHAVEZ ETAL
RT 1 BOX 159 A
HURLEY, NM 88043

TOMAS AND LOURDES CHAVEZ
PO BOX 1293
BAYARD, NM 88023

OF CITY
PO BOX 728
BAYARD, NM 88023

I.A. II CLARK
PO BOX 397
CLIFF, NM 88028

VIANEY COBA
PO BOX 942
SANTA CLARA, NM 88026

COBRE CONSOLIDATED SCHOOL DIST 2
PO BOX 1000
BAYARD, NM 88023

NICHOLAS & VERGENA CONTOR
404 S RAILROAD ST
BAYARD, NM 88023

COX HR FAMILY TRUST
HC 71 BOX 400
HANOVER, NM 88041

SELINA M CRESPIAN
713 ROGERS ST
BAYARD, NM 88023

IDA G. CUELLAR
PO BOX 88
VANADIUM, NM 88023

LORENZA DE LA TORRE
PO BOX 724
BAYARD, NM 88023

GUADALUPE DOMINGUEZ
16610 COBALT COURT
CHINO HILLS, CA 91709

PATSY DOMINGUEZ
706 FAHEY STREET
BAYARD, NM 88023

PRICILLA & RANDY DOMINGUEZ
RR 1 BOX 100
HURLEY, NM 88043

PRISCILLA & RANDALL DOMINGUEZ
RR1 BOX 100
HURLEY, NM 88043

RANDALL DOMINGUEZ
RR1 BOX 100
HURLEY, NM 88043

RANDY DOMINGUEZ
LANE 140 RRT 1 BOX 100
HURLEY, NM 88043

KATHARINE DORRIS
59 S PEARL ST #2
PEARL RIVER, NY 109652234

CLYDE & SHERRY DURHAM
PO BOX 33
BAYARD, NM 88023

JOHN EATON
PO BOX 27
HANOVER, NM 88041

TOM ELLIS
PO BOX 27111
EL PASO, TX 79926

ALEX & DOR ESCOBAR
PO BOX 1145
BAYARD, NM 88023

GASPAR ESCOBAR JOVITA ESPARZA
409 S RUBY ST
DEMING, NM 88030

PATRICIA ESPINOSA
3120 FEDERAL AVENUE
EL PASO, TX 79930

BAXTER & MARY EVATT
PO BOX 16
HANOVER, NM 88041

DOROTHY FALLON
PO BOX 143
BAYARD, NM 88023

LUIS FAUSTINO, DIANA & MELISSA
MARRUFO
PO BOX 83
BAYARD, NM 88023

MIKE & BEATRICE FERNANDEZ
PO BOX 565
HURLEY, NM 88043

FIRST BAPTIST CHURCH OF BAYARD
PO BOX 99
BAYARD, NM 88023

JOHN PHILLIP FLEMING
HC 71 BOX 1532
HANOVER, NM 880410008

MICHAEL FLETCHER
PO BOX 336
BAYARD, NM 88023

MELANIE FLORES
PO BOX 805
BAYARD, NM 88023

ROY FLORES
PO BOX 394
HANOVER, NM 88041

ROBINA FLOYD
PO BOX 104
SANTA CLARA, NM 88026

INC FOY
PO BOX 2331
SILVER CITY, NM 88062

DANIEL FREEMAN & JUPINER BOWERS
HC 71 BOX 815
SAN LORENZO, NM 88041

FROST FAMILY REVOCABLE TRUST
8100 E CAMELBACK RD STE 138
SCOTTSDALE, AZ 85251

JOSEPHINE FROST
RT 15 BOX 1511
HANOVER, NM 88041

LORENZA & STEVEN GABAREE
BOX 1184
BAYARD, NM 88023

RUBEN GALINDO
1302 ALABAMA STREET
SILVER CITY, NM 88061

EMMA GALLEGOS
PO BOX 87
VANADIUM, NM 88023

JOE GALLEGOS
BOX 87
VANADIUM, NM 88023

ADAM & GG GARCIA
PO BOX 103
VANADIUM, NM 88023

GLORIA GARCIA
BOX 103
VANADIUM, NM 88023

MONA TRUJILLO GARCIA
428 N SAN PEDRO
LAS CRUCES, NM 88001

ROQUE GARCIA
1112 CAVE SPRING TRAIL
LAS CRUCES, NM 88011

TRINIDAD GARCIA
240 ARENAS VALLEY ROAD
SILVER CITY, NM 88061

ERNESTO GAVALDON
713 ROGERS STREET
BAYARD, NM 88023

VIRGIL GIAMBERNARDI
PO BOX 1503
BAYARD, NM 88023

MICHAEL GIUSTO
620 APACHE CIR
SILVER CITY, NM 88061

DENELLE ARMANDARIZ GOMEZ
PO BOX 669
BAYARD, NM 88023

EVA GOMEZ
2382 BARCLAY CT
LAS CRUCES, NM 88001

LOUIS & YVONNE GOMEZ
PO BOX 457
BAYARD, NM 88023

MARY GOMEZ
3549 SOUTH GREENGLADE AVE
PICO RIVERA, CA 90660

MICHAEL & CARMEN GOMEZ
PO BOX 718
BAYARD, NM 88023

RUBEN & ROSA GOMEZ
PO BOX 1285
BAYARD, NM 88023

FRED, GLORIA, AND YVETTE GONZALES
806 EMPIRE STREET
BAYARD, NM 88023

REINA GONZALES
4243 DOWNING
BALDWIN PARK, CA 91706

FRED GONZALEZ
PO BOX 579
BAYARD, NM 88023

MARTHA & ROBERT GONZALEZ
PO BOX 28
TYRONE, NM 88065

HAROLD & LEE GOODYEAR & GERRI &
DENISE GOODYEAR
18 POP MORRISON
HURLEY, NM 88043

GRAHAM MYRTLE ESTATE
PO BOX 181
MIMBRES, NM 88049

AMELIA & FRANK GRANADINO
RT 1 BOX 199
HURLEY, NM 88043

GRANT COUNTY
PO BOX 898
SILVER CITY, NM 88062

GRIJALVA FAMILY REVOCABLE TRUST
HC 71 BOX 1528
HANOVER, NM 88041

JUSTIN & RACHEL GRIJALVA
18452 SOUTH BERRYBROOKE PLACE
GREEN VALLEY, AZ 85614

ROSEMARY GRIJALVA-ARZATE
HC 71 BOX 1529
HANOVER, NM 88041

GEORGE GRUNERUD
1139 S DESERT SENNA LOOP
TUCSON, AZ 85748

GENE & JOY GULDEMAN TRUST ETAL
109 COUNTRY CLUB LANE
ANTHONY, NM 88021

ADAM GULICK
1305 KENTUCKY ST
SILVER CITY, NM 88061

PAUL & POLLY GUNDY
4301 COOLIDGE AVE
ST LOUIS PARK, MN 55424

JAMIE & MARY BETH GUTIERREZ
5701 JESSICA CT NW
ALBUQUERQUE, NM 87120

MANUEL & MARIA GUTIERREZ
PO BOX 446
BAYARD, NM 88023

HANOVER MUTUAL DOMESTIC WATER
ASSOCIATION HANOVER
PO BOX 38
HANOVER, NM 88041

MILTON HARRIS
2915 W WATERCRESS DR
TUCSON, AZ 85741

JOHN HARTER
BOX 823
HURLEY, NM 88043

FAMILY HEAD
HC 71 BOX 345
HANOVER, NM 88041

ROJEAN HELLYER
PO BOX 1165
GRANBY, CO 80446

CARLOS HERRERA
BOX 763
HURLEY, NM 88043

MANUEL & KATHLEEN HERRERA, C/O
NICHOLAS & VERGENA CONTOR
300 N FRANEY ST
BAYARD, NM 88023

MANUEL HERRERA
300 N FRANEY
BAYARD, NM 880239781

ROY & ANNA MAE HERRERA
PO BOX 38
PECOS, NM 87552

MANUEL & AMELIA HINOJOSA
3092 MILLAR AVENUE
SANTA CLARA, CA 95051

JOSE HINOSTROZA
PO BOX 405
BAYARD, NM 88023

ESPERANZA HOLLAND
PO BOX 513
BAYARD, NM 88023

JOSEFINA HUERTA
PO BOX 118
BAYARD, NM 88023

ALFREDO HURTADO
PO BOX 456
HURLEY, NM 880430456

I HOPE YOU KIDS GET ALONG LLC
PO BOX 3046
SILVER CITY, NM 88062

LYDIA ICE
PO BOX 699
BAYARD, NM 88023

IRREVOCABLE NORTH HURLEY
PROPERTY TRUST
10 GERONIMO
NORTH HURLEY, NM 88043

CONSUELO JIMENEZ & JOSE JIMENEZ
BOX 325
HANOVER, NM 88041

RAMON JIMENEZ
PO BOX 1135
BAYARD, NM 88023

STEVEN & MARTHA JIMENEZ
PO BOX 572
BAYARD, NM 88023

BRADLEY JOHNSON
PO BOX 1243
BAYARD, NM 88023

CLINT JOHNSON
BOX 1898
SILVER CITY, NM 88062

RAY JOHNSON
5007 EAST SHOMI STREET
PHOENIX, AZ 85044

CURTIS JONES
HC 71 BOX 1525
HANOVER, NM 88041

KAFCO
PO BOX 100
BAYARD, NM 88023

FRANK KENNETT
P.O. BOX 742
BAYARD, NM 88023

FRANK KENNETT
520 OAK STREET
BAYARD, NM 88023

BETH KISHBAUGH
PO BOX 432
BAYARD, NM 88023

FELIX LARA ETAL
PO BOX 1294
BAYARD, NM 88023

BETTIE LARRANAGA
PO BOX 94
BAYARD, NM 88023

LLOYD SR. & PAMELA LATHAM
PO BOX 908
BAYARD, NM 88023

CECILIA LAWRENCE
PO BOX 1222
BAYARD, NM 88023

DAVID LAWRENCE
411 POPLAR
BAYARD, NM 88023

DAVID LAWRENCE
PO BOX 942
SANTA CLARA, NM 88026

JACOB & JANELLE LAWRENCE
PO BOX 508
BAYARD, NM 88023

JOHN LEE
PO BOX 192
CLIFF, NM 88028

ALFRED LEGARDA
PO BOX 599
BAYARD, NM 88023

LARRY LENDERMAN
PO BOX 2422
SILVER CITY, NM 88062

L LINSLEY WOOLF, C/O JOHNNY
MIRANDA
69 NORTH HURLEY ROAD
HURLEY, NM 88043

NORMAN LITTLE
17 CAMINO SECO
SILVER CITY, NM 88061

ANTONIO & JULIA LOERA
PO BOX 292
HANOVER, NM 88041

JOSE & IRMA LOPEZ
8440 E MESETO CIRCLE
MESA, AZ 852097312

JOSE REYES LOPEZ SR. & IRMA LOPEZ
HC 71 BOX 395
HANOVER, NM 88041

JUANITA LOPEZ
RR 1 BOX 25
HURLEY, NM 88043

LUPE LOPEZ
HC 71 BOX 395
HANOVER, NM 88041

PATRICK LOPEZ
66 EL SITIO RD
ESPANOLA, NM 875329698

ROBERT LUCERO
HC 71 BOX 1534
HANOVER, NM 88041

ANTONIO & DOLORES MADRID
PO BOX 135
HANOVER, NM 88041

LORENZO & MARGIE MADRID
PO BOX 24
HANOVER, NM 88041

VELIA MALDONADO
800 E LORI PLACE
SILVER CITY, NM 88061

TRACY MANNING
PO BOX 392
CLIFF, NM 88028

DANNY & DOLORES MARQUEZ
PO BOX 542
BAYARD, NM 88023

ERMINIA & GEORGE MARQUEZ
PO BOX 654
BAYARD, NM 88023

HORACE MARTINEZ
PO BOX 95
HANOVER, NM 880410095

HORACIO & JACQUELINE MARTINEZ
PO BOX 95
HANOVER, NM 88041

LUGARTHA MARTINEZ
RR 1 BOX 25
HURLEY, NM 88043

RODOLFO CORINA MARTINEZ
RT 1 BOX 50
HURLEY, NM 88043

BEATRICE MARTINEZ-MOLINA
RR 1 BOX 25
HURLEY, NM 88043

THE JAIME MAYA FAMILY TRUST
PO BOX 174
VANADIUM, NM 88023

DOMINGO & LUCIA MAYNES
1411 S COLUMBS ROAD
DEMING, NM 88030

PAUL MCNEILL
5283 TURNBRIDGE WELLS RD APT 6
ORLANDO, FL 32812

MARY MEDRANO
PO BOX 936
BAYARD, NM 88023

CRAIG & MERRELL MERRELL
PO BOX 65
HANOVER, NM 880410065

CRAIG MERRELL
PO BOX 65
HANOVER, NM 880410065

CRAIG & DOROTHY MERRELL
PO BOX 65
HANOVER, NM 880410065

REMEDIAL RECOVERY MINING
COMPANY ATTN: MILLER SCOTT
PO BOX 877
PRICE, UT 84501

JOHN MIRANDA
69 N HURLEY ROAD
HURLEY, NM 88043

JOSEPHINE MOHR
PO BOX 602
SANTA CLARA, NM 88026

PAMELA MOHR
PO BOX 238
BAYARD, NM 88023

LOUIS ISABELLA MOLINA
3909 MONT CLAIR
LOS ANGELES, CA 90018

MARY MOLINA
6815 SOUTH 5TH AVE
TUCSON, AZ 85706

SAMUEL MOLINA
PO BOX 419
HURLEY, NM 88043

TRUST MOMSEN
PO BOX 948
BAYARD, NM 88023

CLYDE & JENNIE MONTES
RT 1 BOX 135
HURLEY, NM 88043

GILBERT MORONES ETAL
7 MUM ST
HURLEY, NM 88043

GILBERT & JULIE MORONES
7 MUM STREET
HURLEY, NM 88043

JERRY MORRISON
13454 WEST REDFIELD ROAD
SURPRISE, AZ 85379

ELISA MUNOZ
14637 EAGLES CROSSING DRIVE
ORLANDO, FL 32837

RAMONA MUNOZ
RR 1 BOX 105
HURLEY, NM 88043

ROBERT MUNOZ
P O BOX 292
BAYARD, NM 88023

ROBERT & BETTY MUNOZ
PO BOX 292
BAYARD, NM 88023

RUDY & CARMEN MUNOZ
PO BOX 900
BAYARD, NM 88023

TINA MUNOZ & MARY ANN CAMPA
PO BOX 1482
BAYARD, NM 88023

SUSIE & YSIDRO MURILLO
901 N SWAN STREET
SILVER CITY, NM 88061

DAVID & LINDA MURPHY
6009 LEBANON LOOP RD
SAFFORD, AZ 85546

JOE NEAL
PO BOX 277
BAYARD, NM 88023

CLAUDE NEVILLS
30 SPRING CREED ROAD
SILVER CITY, NM 88051

DAVID & MICHEAL NEZ
BOX 203
VANADIUM, NM 88023

CARROLL & SUE NIBLETT TRUST
1146 23 ROAD
GRAND JUNCTION, CO 81505

NMVSC FIDUCIARY FOR EFRAIN
DOMINGUEZ
HC 71 BOX 1155
FAYWOOD, NM 88034

SAUNDRA OFFUTT
PO BOX 2866
SILVER CITY, NM 88062

IRENE OJINAGA
PO BOX 792
BAYARD, NM 88023

MARY OLIVAS
3718 SHARON COPLEY RD
MEDINA, OH 44256

DANNY OROSCO
PO BOX 316
HURLEY, NM 88043

DELILAH ORTIZ
4911 GALINA DR
LAS CRUCES, NM 88012

OUR LADY OF FATIMA PARISH INC OUR
1280 MED PARK DR
LAS CRUCES, NM 88005

CARLOS & BERNICE PACHECO
PO BOX 1028
BAYARD, NM 88023

MICHELLE & PATRICK PACHECO
66 EL SITIO RD
ESPANOLA, NM 87532

RAYMOND & WILLIAM PACHECO
3872 N SILVER
SILVER CITY, NM 88061

DAVID PADILLA & VICTORIA
HERNANDEZ
PO BOX 321
BAYARD, NM 88023

HARVEY & MARTHA PADILLA
HC 71 BOX 1528
HANOVER, NM 88041

VICTOR PALOMAREZ ETAL
PO BOX 597
HURLEY, NM 88043

VICTOR ANITA PALOMAREZ
BOX 144
VANADIUM, NM 88023

VICTOR PALOMAREZ SR ETAL
PO BOX 597
HURLEY, NM 88043

PAULA PELAYO
PO BOX 991
BAYARD, NM 88023

ARTHUR & SUSIE PENA
RT 1 BOX 110
HURLEY, NM 88043

EDWARD PENA
PO BOX 563
HURLEY, NM 88043

HENRY PENA
PO BOX 385
HURLEY, NM 880430385

HENRY & LUPE PENA
PO BOX 385
HURLEY, NM 880430385

LORENZO PENA
PO BOX 385
HURLEY, NM 880430385

LORENZO PENA
PO BOX 385
HURLEY, NM 88043

FRANCISCO & GUADALUPE PERALTA
2200 HOLIDAY AVE SPACE 434
LAS CRUCES, NM 880058114

IRENE & RICHARD PEREZ
PO BOX 792
BAYARD, NM 88023

NILSON & PATRICIA PEREZ
HC 71 BOX 1531
HANOVER, NM 88041

SAUL PEREZ ETAL
PO BOX 614
BAYARD, NM 88023

MANUEL & BERTHA PERU
PO BOX 657
BAYARD, NM 88023

ROBERT PERU
PO BOX 580
BAYARD, NM 88023

NICOLETTE PROUDFOOT
814 NEW JERSEY
LAWRENCE, KS 66044

SAMUEL & VIRGINIA PROVENCIO
1564 S ROYAL PALM RD
APACHE JCT, AZ 852196566

MICHAEL PUENTES
5504 LITO NW
ALBUQUERQUE, NM 87114

TERESA RAMIREZ
PO BOX 262
HURLEY, NM 88043

ALFRED & BETTY RASCON
PO BOX 51
HANOVER, NM 88041

INCORPORATED RECWEST
5401 S ARCADIA
TUCSON, AZ 85706

JENNIE TAPIA REYNOLDS ETAL
PO BOX 146
BAYARD, NM 88023

MARK RICHARD
PO BOX 1258
BAYARD, NM 88023

JOHN RINEHART
PO BOX 2248
DEMING, NM 88031

MARY RIOS
PO BOX 682
BAYARD, NM 88023

MARY LOU RIOS ETAL
RR1 BOX 111
HURLEY, NM 88043

STELLA & TERESO RIVERA
61 PETERSON DRIVE
SILVER CITY, NM 88061

BEULAH ROBINSON
PO BOX 238
BAYARD, NM 88023

ALFRED & DEBRA RODRIGUEZ
PO BOX 507
BAYARD, NM 880230507

ANDREA RODRIGUEZ
PO BOX 609
BAYARD, NM 88023

CRUZ RODRIGUEZ
PO BOX 294
HANOVER, NM 88041

JESUS & FELIPA RODRIGUEZ
2524 JACINTO AVE
MESA, AZ 85204

JESUS RODRIGUEZ
2524 JACINTO AVE
MESA, AZ 85204

JOSEPH RODRIGUEZ
PO BOX 434
HURLEY, NM 88043

RAY & SYLVIA RODRIGUEZ
PO BOX 294
HANOVER, NM 88041

SYLVIA RODRIGUEZ
PO BOX 294
HANOVER, NM 88041

LESTER & NORMA ROGERS
BOX 335
BAYARD, NM 88023

SHIRLEY ROGERS
BOX 1337
BAYARD, NM 88023

CECILIA ROSALES
PO BOX 46
BAYARD, NM 88023

DONN & JOYCE RUEBUSH
HC 71 BOX 1537
HANOVER, NM 88041

BEDA SABORIO
PO BOX 504
HURLEY, NM 88043

MANUEL SABORIO
PO BOX 504
HURLEY, NM 88043

NATALIA SABORIO
PO BOX 216
HURLEY, NM 88043

FIDEL SAENZ
PO BOX 987
DEMING, NM 88031

SAINT VINCENT DEPAUL PARISH SAINT
PO BOX 1189
SILVER CITY, NM 88062

ENCARNACION SALAS
1150 ATHERTON CT APT 14
SALT LAKE CITY, UT 84123

JAVIER SALAS
PO BOX 22
BAYARD, NM 88023

MARCO SALCIDO
4905 W CASHIN DR
TUCSON, AZ 85757

ADAM SANCHEZ
PO BOX 201
BAYARD, NM 88023

ADELINA SANDOVAL
BOX 1194
BAYARD, NM 88023

ALBERT SANDOVAL & DONNA
SANDOVAL
PO BOX 10
SANTA CLARA, NM 88026

CIPRIANO & CECILIA SANDOVAL &
RACHEL HERRERA
BOX 86
VANADIUM, NM 88023

CIPRIANO & CECILIA SANDOVAL
BOX 86
VANADIUM, NM 88023

ERMINIO SANDOVAL
BOX 123
HANOVER, NM 88041

FELIX & FLORA SANDOVAL
PO BOX 205
VANADIUM, NM 88023

JOE SANDOVAL
PO BOX 114
VANADIUM, NM 88023

LEWIS SANDOVAL
PO BOX 826
CENTRAL, NM 88026

EDWARD & MARCELA SANTAMARIA
PO BOX 302
BAYARD, NM 88023

CHRISTOPHER SAXMAN
PO BOX 87
HANOVER, NM 88041

FLORENCE SAYER
2104 EASTRIDGE DR NE
ALBUQUERQUE, NM 87112

CELIA SEDILLOS
RR 1 BOX 95
HURLEY, NM 88043

HENRY SEDILLOS
PO BOX 83
HURLEY, NM 88043

MIKE SEDILLOS
RT 1 BOX 86
HURLEY, NM 88043

ROSALINA SEDILLOS
PO BOX 112
HANOVER, NM 88041

ROSALINA SEDILLOS
P O BOX 112
HANOVER, NM 88041

JODIE & LYNN SEITZINGER
29 HANSEN RD
CLOUDCROFT, NM 88317

JUANA SIERRA
PO BOX 141
HANOVER, NM 88041

JUANA SIERRA
21 IGLESIA ST
HANOVER, NM 88041

SANTOS & DORA SIERRA
PO BOX 279
HURLEY, NM 88043

WILLIAM & ERLINDA SIERRA
903 ROGERS STREET
BAYARD, NM 88023

ANN & ANDREW SMITH
PO BOX 189
WHITE BLUFF, TN 37187

SHIRLEY SOLANO
PO BOX 304
HURLEY, NM 88043

WILLIAM STANFORD
PO BOX 655
SANTA CLARA, NM 88026

STEPP/WEED LIVING TRUST ETAL
5345 EAST MCLELLAN RD #18
MESA, AZ 85205

JOSEPH & NANCY STEVENS C/O ALFRED
LEGARDA
PO BOX 599
BAYARD, NM 88023

JOSEPH EDWARD STEVENS
PO BOX 562
HURLEY, NM 880430562

ROLAND STONE
54 HORSESHOE DR
HURLEY, NM 880439503

MERCEDES & ELAINE STRAIN
2600 N SILVER ST
SILVER CITY, NM 88061

FRED TAPIA
4825 S 3RD ST
PHOENIX, AZ 85040

RANDY TEAGUE
PO BOX 14
HANOVER, NM 88041

CHRISTINA CORRAL & ALEXANDER
FRANCES ALMA TERRAZAS
6300 ESTES ST
ARVADA, CO 80004

GLORIA TERRAZAS
1310 NORTH LOOP
SILVER CITY, NM 88061

TIMSS FAMILY TRUST TIMSS
PO BOX 28
HANOVER, NM 88041

ANTONIO TORRES
PO BOX 114
HANOVER, NM 88041

DAVID TORRES
PO BOX 52
BAYARD, NM 88023

FORTUNATO & FABIOLA TORRES
PO BOX 52
BAYARD, NM 88023

HENRY & CECILIA TORRES
PO BOX 853
BAYARD, NM 88023

GABRIEL TORREZ
7 PARK STREET
BAYARD, NM 88023

TOWN OF HURLEY
PO BOX 65
HURLEY, NM 88043

ANGIE TREVIZO
PO BOX 101
SANTA CLARA, NM 88026

AUDON TRUJILLO & NANCY WILKES-
TRUJILLO
506 W. 3 RD STREET
T OR C, NM 87901

LUPE & ORALIA TRUJILLO
PO BOX 692
HURLEY, NM 88043

TURNER ALTON ESTATE
PO BOX 1317
SILVER CITY, NM 88062

SCOTT & VERONICA VAN PATTEN
PO BOX 689
BAYARD, NM 88023

ANTONIO VARGAS
PO BOX 35
HANOVER, NM 88041

MELODY VASQUEZ
PO BOX 426
BAYARD, NM 88023

MELODY VASQUEZ
PO BOX 426
BAYARD, NM 88023

VINCENT & ROBERT VESELY
PO BOX 869
SILVER CITY, NM 88062

BETTY & VICK JENNINGS
PO BOX 483
HURLEY, NM 88043

VILLAGE OF BAYARD
PO BOX 728
BAYARD, NM 88023

RAMON VILLALOBOS & SUSIE
MARTINEZ
PO BOX 52
HANOVER, NM 88041

RAMON VILLALOBOS
PO BOX 212
VANADIUM, NM 88023

W&N ENTERPRISES INC
PO BOX 559
SILVER CITY, NM 88062

JOSEPH & KARIN WADE
PO BOX 373
HURLEY, NM 88043

LAURA WALKER
1208 CENTRAL AVE
BAYARD, NM 88023

WALTERS PROPERTIES LLC WALTERS
PO BOX 5012
SILVER CITY, NM 88062

MARIE WELLS
11968 HIGHWAY 180 E
SILVER CITY, NM 88061

DWIGHT WHEELER
98248 BRIDGE LN
MYRTLE POINT, OR 97458

KERRY WHEELER
PO BOX 1758
LIVINGSTON, TX 77351

VIRGIL WIDBY
PO BOX 38
BAYARD, NM 88023

DAVID & CHERYL WILGUESS
PO BOX 577
BAYARD, NM 88023

ROBERT WILLIAMS
#6 MUM STREET
HURLEY, NM 88043

A YNOSTROZA
PO BOX 94
BAYARD, NM 88023

PATRICIA YOUNG
PO BOX 664
BAYARD, NM 88023

ARMANDO & ROY ZAMORA
PO BOX 73
HANOVER, NM 88041

PREFIX	FIRST NAME	LAST NAME	TITLE	COMPANY	ADDRESS	CITY, ST & ZIP	PHONE
Mr.	Arthur	Allison	Cabinet Secretary	Indian Affairs Department	1220 S. St. Francis Drive	Santa Fe, NM 87505-0115	505.476.
Mr.	Bill	Auby	Geologist, Solids Team	Bureau of Land Management	P.O. Box 27115	Santa Fe, NM 87505-0115	505.954.
Ms.	Megan	Anderson	Attorney at Law	Western Environmental Law Center	208 Paseo Del Pueblo Sur Unit 602	Taos, NM 87571-5931	575.751.
Mr.	John	Cornell	Campaign Coordinator	New Mexico Wildlife Federation	121 Cardenas Dr NE	Albuquerque, NM 87108	505.299.
Mr.	Tony	Delfin	State Forester	State Forestry Division, EMNRD	P.O. Box 1948	Santa Fe, NM 87504-1948	505.476.
Mr.	Tim	Eastep	Environmental Manager	Chino Mines Company	P.O. Box 410	Bayard, NM 88023	
Ms.	Michelle	Fensey	Archeologist	Department of Cultural Affairs/Historic	407 Galisteo Street, Suite 236	Santa Fe, NM 87501	505.827.
Mr.	Terence	Foreback	State Mine Inspector	Bureau of Mine Safety	801 Leroy Place	Socorro, NM 87801	505.835.
Ms.	Elizabeth	German	Attorney at law	Brown and German	12836 Lomas Blvd. NE, Ste. G	Albuquerque, NM 87112	505.292.
Mr.	Mike	Johnson	Hydrology Bureau Chief	Office of the State Engineer	P.O. Box 25102	Santa Fe, NM 87504-5102	505.827.
Mr.	Alan	Kuhn	Geotechnical Engineer	Alan Kuhn Associates, LLC	13212 Mantoba Dr., NE	Albuquerque, NM 87111	505.298.
Mr.	Michael	Linden	Regional Geologist	U.S.D.A. Forest Service	333 Broadway Blvd., SE	Albuquerque, NM 87102	505.842.
Mr.	Joel	Lusk	Biologist	U.S. Department of Interior U.S. Fish and Wildlife	2105 Osuna NE	Albuquerque, NM 87113	505.761.
Ms.	Walter L.	Meech	President	C&E Concrete	P.O. Box 2547	Milan, NM 87021	505.287.
Mr.	Doug	Meiklejohn	Executive Director	NM Environmental Law Center	1405 Luisa St., Ste. 5	Santa Fe, NM 87505-0115	505.989.
Mr.	Keith	Ehlert	Acting Program Manager	New Mexico Environment Department	P.O. Box 5469	Santa Fe, NM 87502	505.843.
Mr.	Nathan	Newcomer	Associate Director	New Mexico Wilderness Alliance	P.O. Box 25464	Albuquerque, NM 87125	
Mr.	Ray	Powell	Commissioner	New Mexico State Land Office	P.O. Box 1148	Santa Fe, NM 87504	505.827.
Mr.	Michael	Robinson	Minerals Manager	New Mexico State Land Office	P.O. Box 1148	Santa Fe, NM 87504	
Mr.	Paul	Mariano	Research Director	Southwest Research and Information Ctr.	P.O. Box 4524	Albuquerque, NM 87196	
Mr.	Brian	Paul	Executive Director	Amigos Bravos	P.O. Box 238	Taos, NM 87571	505.262.
Ms.	Julie	Shields	District Contact	The Wilderness Society	1660 Wynkoop Street, Suite 850	Denver, CO 80202	575.758.
Ms.	Allyson	Silva	Executive Director	Gila Resources Information Project	305A N. Cooper	Silver City, NM 88061	303.650.
Ms.	Chuck	Fuller	Director, Responsible Mining	Gila Resources Information Project	305A North Cooper St.	Silver City, NM 88061	575.538.
Ms.	Derek	Heyfey	Manager, Environmental Affairs	Chevron Mining Company	P.O. Box 469	Questa, NM 87556	
Dr.	Matthew	Wunder	Chief, Conservation Svcs. Div.	New Mexico Department of Game and Fish	P.O. Box 25112	Santa Fe, NM 87504	
Mr.	Art	Gebeau	President	Bluewater Valley Downstream Alliance	P.O. Box 2038	Milan, NM 87021	

PREFIX	FIRST NAME	LAST NAME	TITLE	COMPANY	ADDRESS	CITY, ST & ZIP	PHONE
Mr.	Arthur	Allison	Cabinet Secretary	Indian Affairs Department	1220 S. St. Francis Drive	Santa Fe, NM 87505-0115	505.476.
Mr.	Bill	Auby	Geologist, Solids Team	Bureau of Land Management	P.O. Box 27115	Santa Fe, NM 87505-0115	505.954.
Ms.	Megan	Anderson	Attorney at Law	Western Environmental Law Center	208 Paseo Del Pueblo Sur Unit 602	Taos, NM 87571-5931	575.751.
Mr.	John	Cornell	Campaign Coordinator	New Mexico Wildlife Federation	121 Cardenas Dr NE	Albuquerque, NM 87108	505.299.
Mr.	Tony	Deffin	State Forester	State Forestry Division, EMINRD	P.O. Box 1948	Santa Fe, NM 87504-1948	505.476.
Mr.	Tim	Eastep	Environmental Manager	Chino Mines Company	P.O. Box 10	Bayard, NM 88023	
Ms.	Michelle	Ensey	Archeologist	Department of Cultural Affairs/Historic	407 Galisteo Street, Suite 236	Santa Fe, NM 87501	505.827.
Mr.	Terence	Foreback	State Mine Inspector	Bureau of Mine Safety	801 Leroy Place	Socorro, NM 87801	505.835.
Ms.	Elizabeth	German	Attorney at Law	Brown and German	12836 Lomas Blvd. NE, Ste. G	Albuquerque, NM 87112	505.292.
Mr.	Mike	Johnson	Hydrology Bureau Chief	Office of the State Engineer	P.O. Box 25102	Santa Fe, NM 87504-5102	505.827.
Mr.	Alan	Kuhn	Geotechnical Engineer	Alan Kuhn Associates, LLC	13212 Manitoba Dr., NE	Albuquerque, NM 87111	505.298.
Mr.	Michael	Linden	Regional Geologist	U.S.D.A. Forest Service	333 Broadway Blvd., SE	Albuquerque, NM 87102	505.842.
Mr.	Joel	Lusk	Biologist	U.S. Department of Interior U.S. Fish and Wildlife	2105 Osuna NE	Albuquerque, NM 87113	505.761.
Ms.	Walter L.	Meech	President	C&E Concrete	P.O. Box 2547	Milán, NM 87021	505.287.
Mr.	Doug	Meiklejohn	Executive Director	NM Environmental Law Center	1405 Luisa St., Ste. 5	Santa Fe, NM 87505-0115	505.989.
Mr.	Keith	Ehert	Acting Program Manager	New Mexico Environment Department	P.O. Box 5469	Santa Fe, NM 87502	
Mr.	Nathan	Newcomer	Associate Director	New Mexico Wilderness Alliance	P.O. Box 25464	Albuquerque, NM 87125	505.843.
Mr.	Ray	Powell	Commissioner	New Mexico State Land Office	P.O. Box 1148	Santa Fe, NM 87504	505.827.
Mr.	Michael	Mariano	Minerals Manager	New Mexico State Land Office	P.O. Box 1148	Santa Fe, NM 87504	
Mr.	Paul	Robinson	Research Director	Southwest Research and Information Ctr.	P.O. Box 4524	Albuquerque, NM 87196	505.262.
Mr.	Brian	Shields	Executive Director	Amigos Bravos	P.O. Box 238	Taos, NM 87571	575.758.
Ms.	Juli	Slivka	District Contact	The Wilderness Society	1660 Wynkoop Street, Suite 850	Denver, CO 80202	303.650.
Ms.	Allyson	Siwik	Executive Director	Gila Resources Information Project	305A N. Cooper	Silver City, NM 88061	575.758.
Ms.	Chuck	Fuller	Director, Responsible Mining	Gila Resources Information Project	305A North Cooper St.	Silver City, NM 88061	
Ms.	Derek	Heyfey	Manager, Environmental Affairs	Chevron Mining Company	P.O. Box 469	Questa, NM 87556	
Dr.	Matthew	Wunder	Chief, Conservation Svcs. Div.	New Mexico Department of Game and Fish	P.O. Box 25112	Santa Fe, NM 87504	
Mr.	Art	Gebeau	President	Bluewater Valley Downstream Alliance	P.O. Box 2038	Milán, NM 87021	

Attachment F
Electronic Copy of Application Materials