

Ennis, David, EMNRD

From: Royal Minerals Inc <rmigold@yahoo.com>
Sent: Monday, November 24, 2014 2:37 PM
To: Ennis, David, EMNRD
Subject: Reclamation

New Mexico Energy, Minerals and Natural Resources
Mining and Minerals
1220 South St. Francis
Santa Fe, NM 87505

ATT: David Ennis

GR028RE
Reclamation of Pond and Dump Site

We have capped the Pond and graded the center area to maintain drainage. The disturbed area has been re-contoured to blend with the surrounding area. The Pond was seeded in July 2013.

On the Dump, the ore that had any values was shipped to Freeport-McMoRan Miami Operations. The Dump with no values was capped and the walls was graded to 3.1 slope. The Dump will be seeded in July 2015, when the rainy season starts.

We would like to have our bond released.

Bill Hanson

Royal Minerals, Inc.
P.O. Box 920
Duncan, Az 85534

Ennis, David, EMNRD

From: Royal Minerals Inc <rmigold@yahoo.com>
Sent: Friday, December 05, 2014 1:08 PM
To: Ennis, David, EMNRD
Subject: Permit

kMining and Minerals Division
1220 South St. Francis Drive
Santa Fe, New Mexico 87505

Center Mine
Permit No. GRO28RE

Dear D.J.

We would like to contemplate on downgrading our permit to a minimal impact operations.

Bill Hanson

Royal Minerals, Inc.
P.O. Box 920
Duncan, Az 85534

Description of Reclamation:

Starting in approximately late 2012 into 2013, ore stockpiles located outside the portal at the Center Mine were loaded and trucked to a smelter in Arizona for processing. During this time, the stormwater and leachate collection pond located to the south of the stockpiles was reclaimed by filling in, and re-routing water around the reclamation through an armored channel. The waste stockpiles and tailings from the mill were then graded and shaped using graders and other heavy equipment. Soil material was excavated from private, patented mining claims along Carlisle Road north of the Center Mine and trucked to the Center Mine. The soil material was stockpiled in rows and later graded by heavy equipment, resulting in a cover placement over the top of the waste rock and tailings. Re-seeding is to occur in summer 2015 just prior to monsoon season.

Photographic Progression of Reclamation:

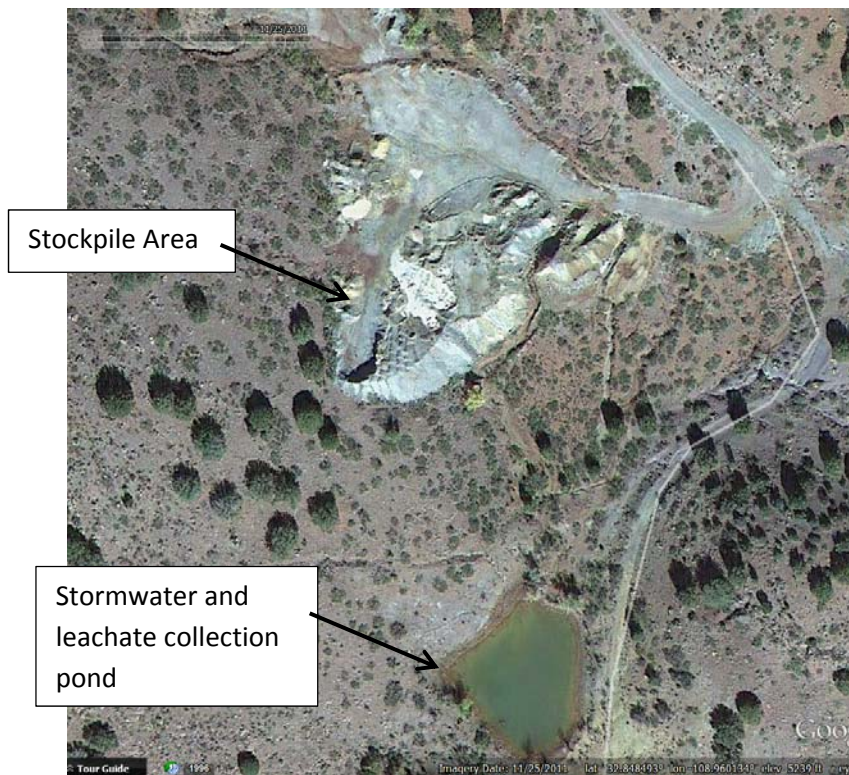


Figure 1: Center Mine aerial photograph from 2011, before reclamation began

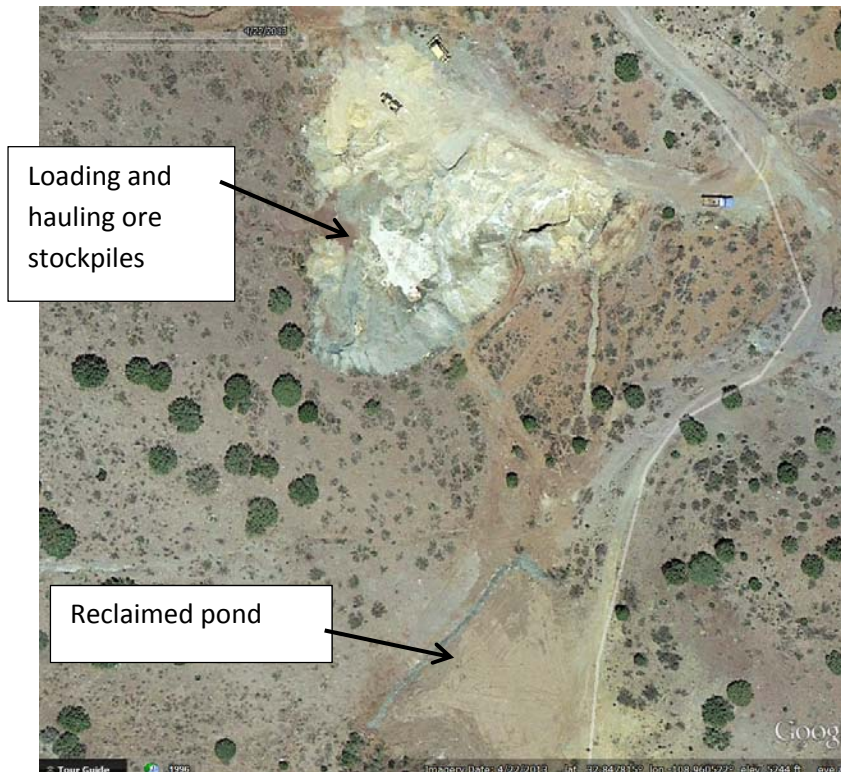


Figure 2: Center Mine aerial photograph from 2013. Pond is reclaimed. Stockpiles are being loaded and trucked off-site to Arizona for smelting.

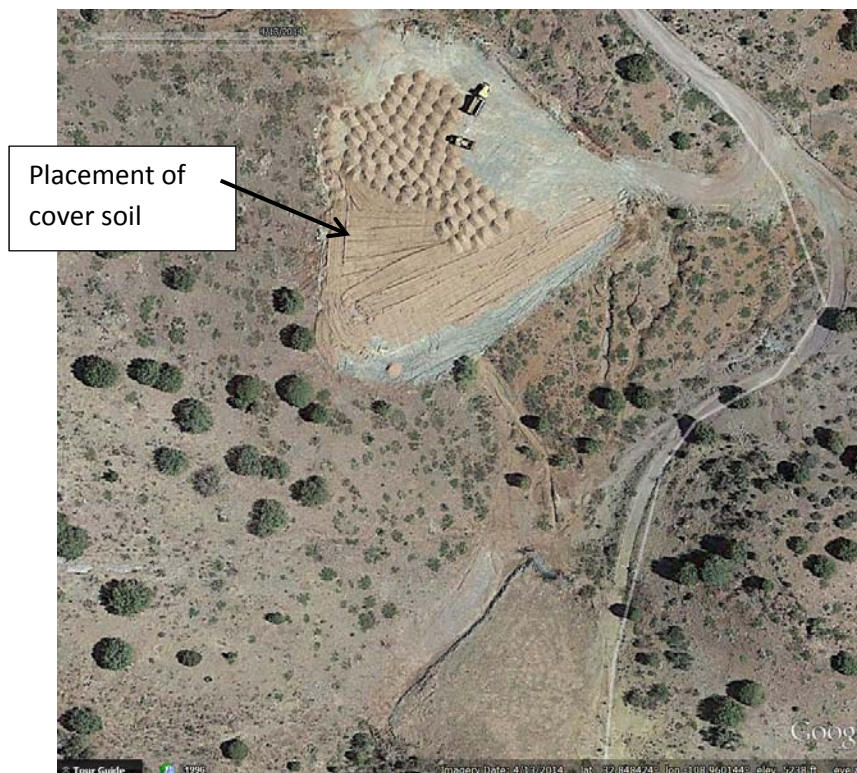


Figure 3: Center Mine aerial photograph from April 2014. Stockpile has been graded and cover soil is being placed over the material.



Figure 4: Center Mine Aerial Photograph from May 2014. Continued placement and spreading of cover soil over the regraded stockpile area.