

EL CAPITAN PRECIOUS METALS, INC.

8390 VIA DE VENTURA, SUITE F-110, SCOTTSDALE, AZ



June 4, 2016

Attn: James Hollen
Sr. Mine Reclamation Specialist/Geologist/Archaeologist
MMD, Mining Act Reclamation Bureau
1220 South St. Francis Drive
Santa Fe, NM 87505
Re: Technical Responses on Proposed Modification LI005ME

Dear Mr. Hollen,

ECPN shall continue to utilize a combination of area stripping as well as contour stripping. This will involve removing the overburden, trees and shrubs. The overburden shall be screened and run through the magnetic separation process in order to retain all the topsoil. The Iron Ore deposit will then be removed.

The overburden will be placed in the excavation produced by the previous strip. The overburden shall be placed so it is sloped and tiered in order to restore the natural landscape. The trees and shrubs shall be mulched and stockpiled along the excavated areas where we are remediating. Once proper covering and shaping at a 3:1 slope has been completed existing topsoil and weathered sandstone shall be applied to complete the restoration. The seed shall be broadcasted and covered with the mulch in order to minimize erosion.

Entrance to the Mine site is gated and locked at the main road off of Highway 246. Approximately $\frac{3}{4}$ of a mile is another (2) gates that are always locked and must be opened by security. The Perimeter of the permit area is fenced by a 6' chain link gate which is locked to prevent access from the public and or wildlife.

ECPN uses approximately 20' of the interior area of the fence perimeter as its roads. The surface has good topsoil already existing. The company shall use a ripper once the mining has been completed reseed by broadcasting and cover with mulch.

The following species of seed will be broadcast over the 5-acre MPPA:

EL CAPITAN PRECIOUS METALS, INC.

8390 VIA DE VENTURA, SUITE F-110, SCOTTSDALE, AZ



- Side oats Gramma 3 lbs. per acre
- Blue Gramma 4 Lbs. per acre
- Goleta Grass 3lbs. per acre
- Bottlebrush Squirrel Tail 3 Lbs. per acre
- Rabbit Brush 2 lbs. per acre
- Mountain Mahogany 2 lbs. per acre
- Winter Fat 2 lbs. per acre

The company has made improvements on its primary right of way under Patent # 381096/access to the site which was signed by President Woodrow Wilson. Routine maintenance will continue as was ordered by the Department of Labor/MSHA March 2016. The Disturbance of approximately .333 acres was not done arbitrarily by the company, it was ordered by a Federal agency (Department of Labor/MSHA). Attorney Blair Dunn is working with Congressman Pearce's Office and the Department of Labor/MSHA in this regard. The Forest Service has refused to meet on site to resolve these issues with the company and the Congressman's office.

ECPN has Patented Property within the USFS managed property. Patent# 381096 Grants Rights and easements in the development of the mines authorized by Congress. Currently Attorney Blair Dunn who represents ECPN has notified USFS our intent to use the roads under the rights granted by Congress. The company shall continue making improvements and routine maintenance on the road.

We will continue with adequate care in the prevention of ponding of surface water. As stated above, the overburden will be placed in the excavation areas as we continue with our strip mining in order to prevent ponding.

The New Mexico Department of Cultural Affairs stated there are no historic sites in the permit area. They state there are Archeological sites near the permit area and maybe some new sites could exist. It is not our intention to disturb any sites. The company would consider relocating, roads and work areas, rights of way, easements where the sites exist.

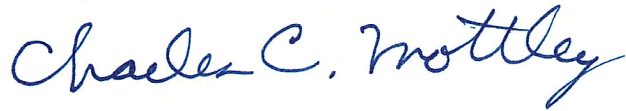
If you have any questions or comments regarding this document or its

EL CAPITAN PRECIOUS METALS, INC.

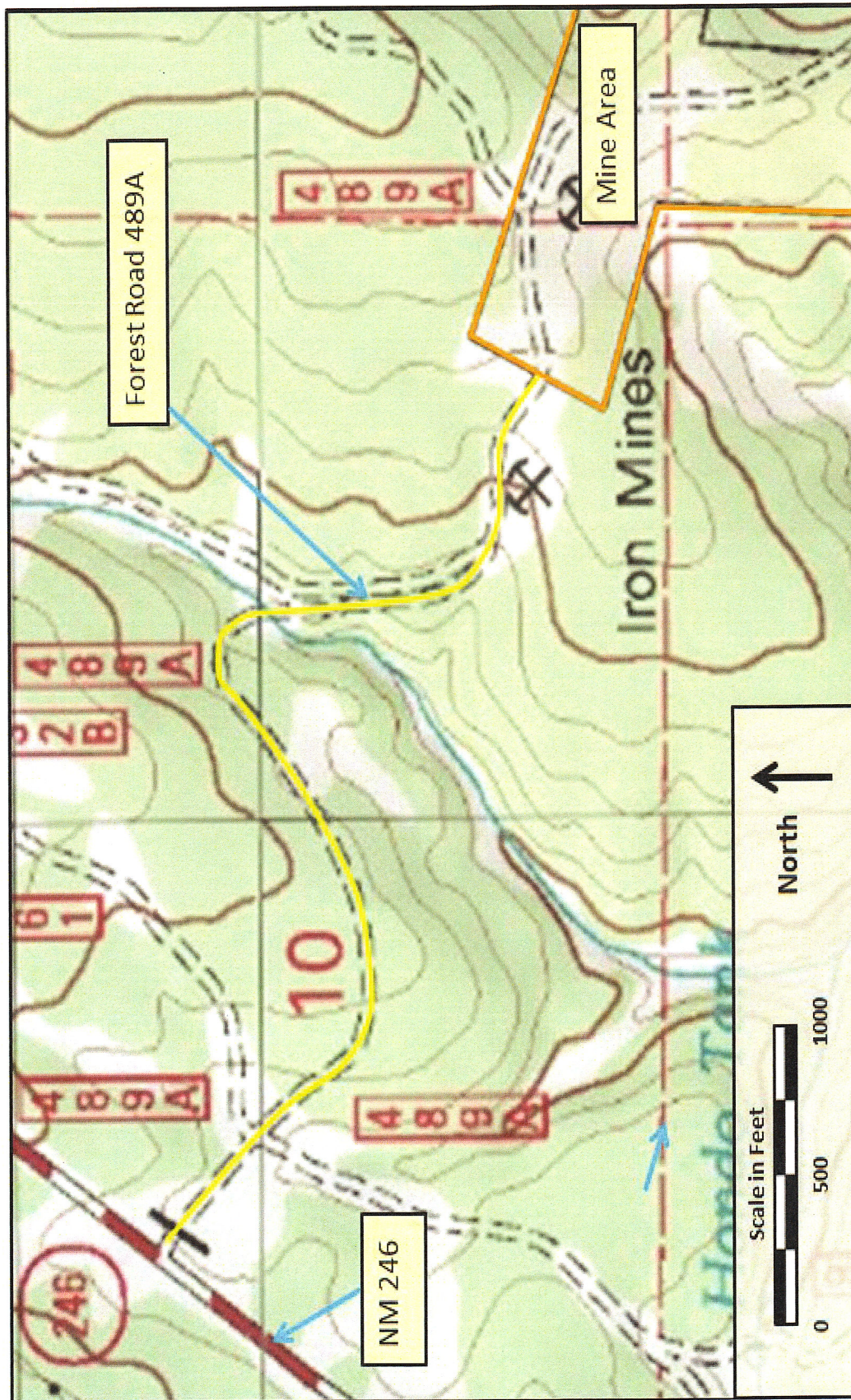
8390 VIA DE VENTURA, SUITE F-110, SCOTTSDALE, AZ

contents, please contact me at by phone
480 414-7721 or by email; c.mottley@elcapitanpmi.com

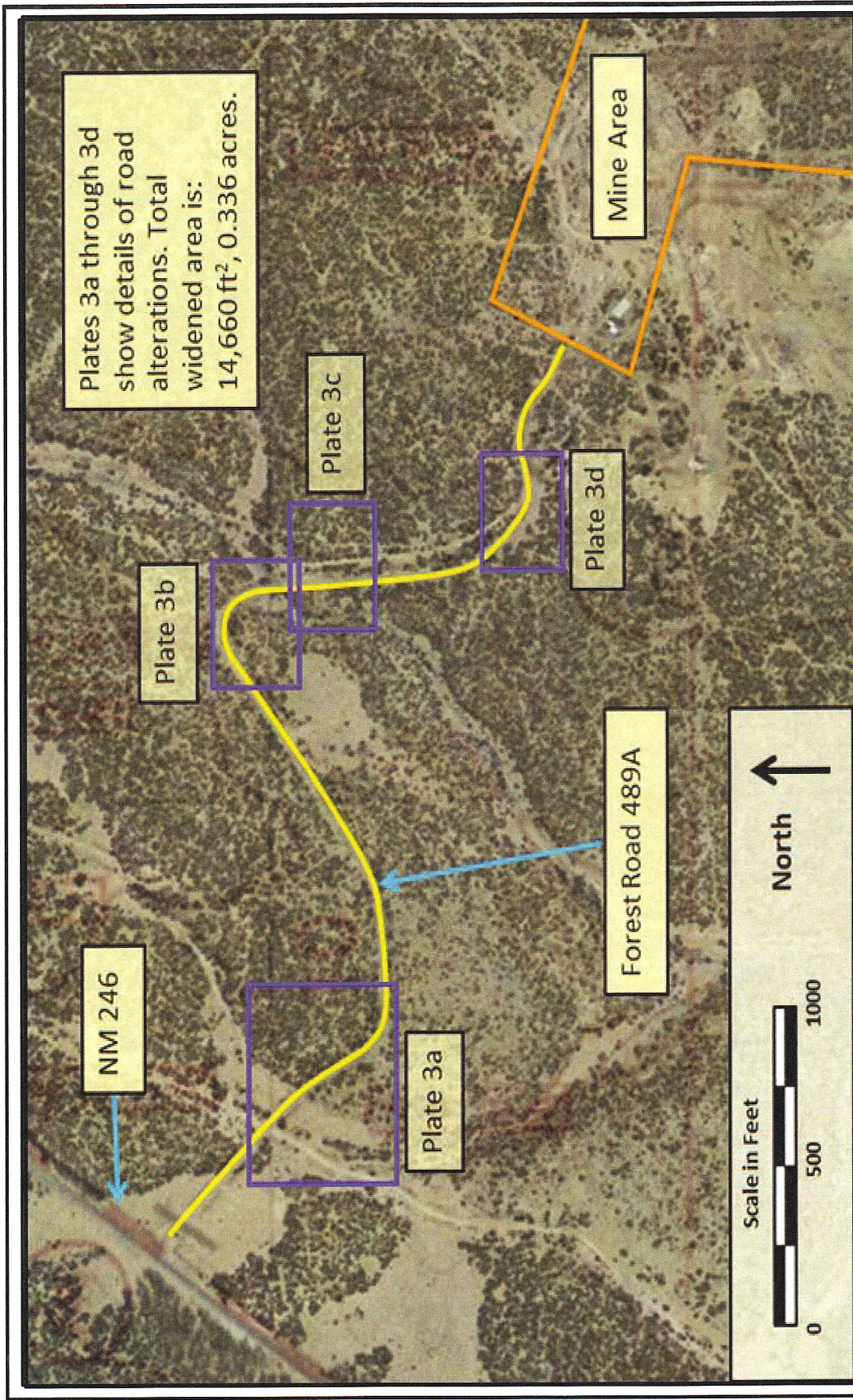
Sincerely,



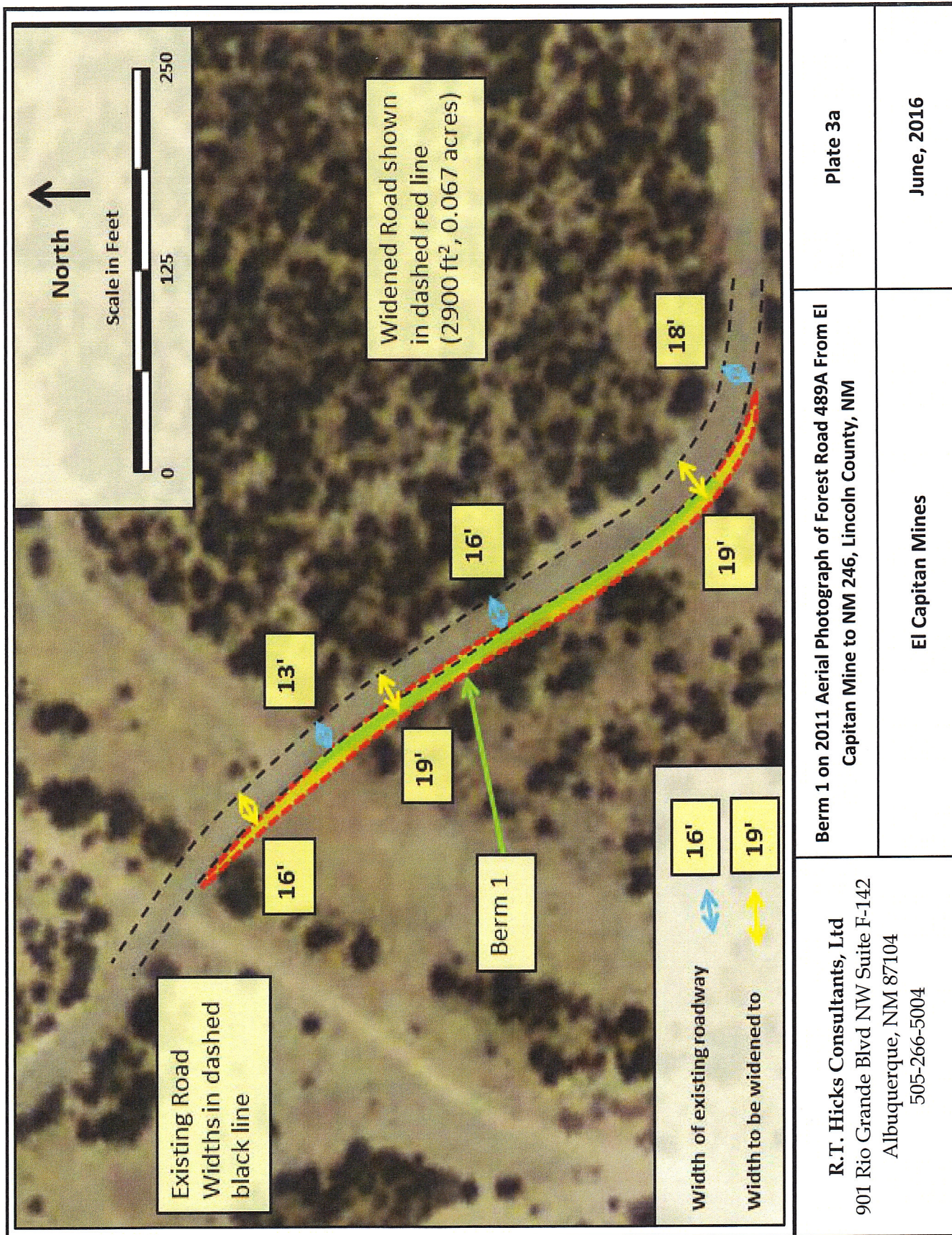
Charles C. Mottley
Chief Executive Officer



<p>R.T. Hicks Consultants, Ltd 901 Rio Grande Blvd NW Suite F-142 Albuquerque, NM 87104 505-266-5004</p>	<p>Topographic Map Showing Forest Road 489A From El Capitan Mine to NM 246, Lincoln County, NM</p>	<p>Plate 1</p>
	<p>El Capitan Mines</p>	<p>June, 2016</p>

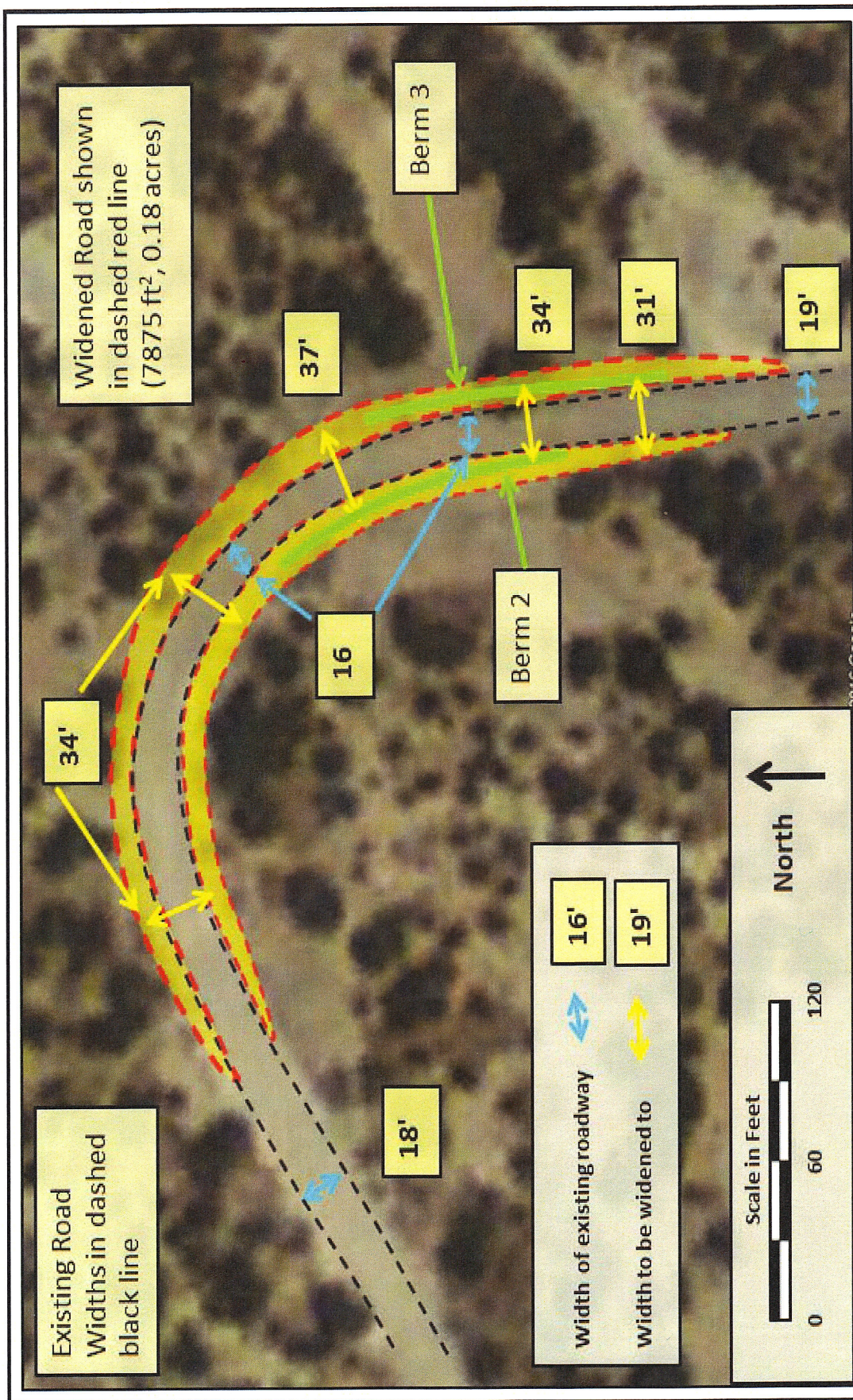


<p>R.T. Hicks Consultants, Ltd 901 Rio Grande Blvd NW Suite F-142 Albuquerque, NM 87104 505-266-5004</p>	<p>2011 Aerial Photograph and Topographic Map Showing Forest Road 489A From El Capitan Mine to NM 246, Lincoln County, NM</p>	<p>Plate 2</p>
	<p>El Capitan Mines</p>	<p>June, 2016</p>

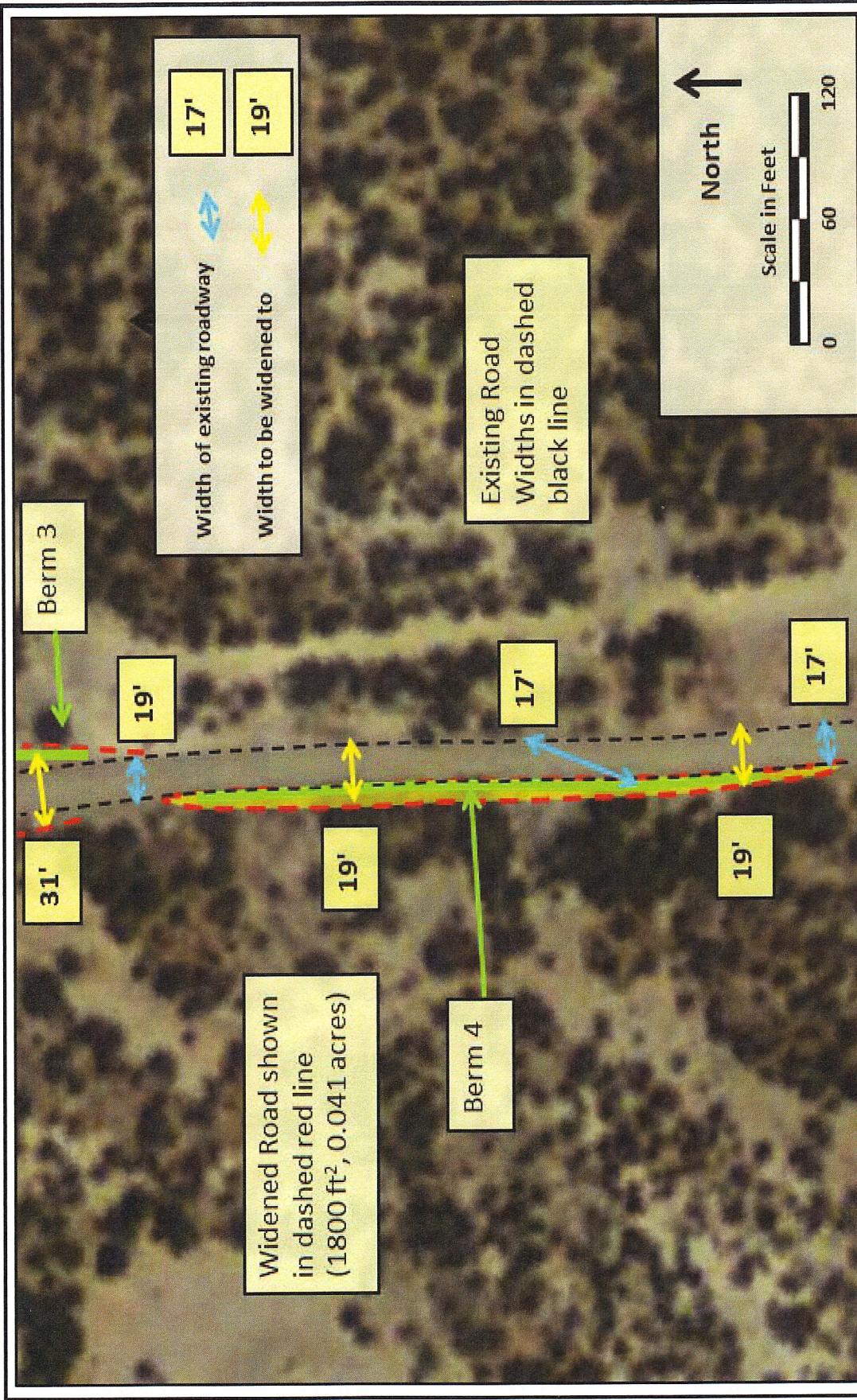


R.T. Hicks Consultants, Ltd
901 Rio Grande Blvd NW Suite F-142
Albuquerque, NM 87104
505-266-5004

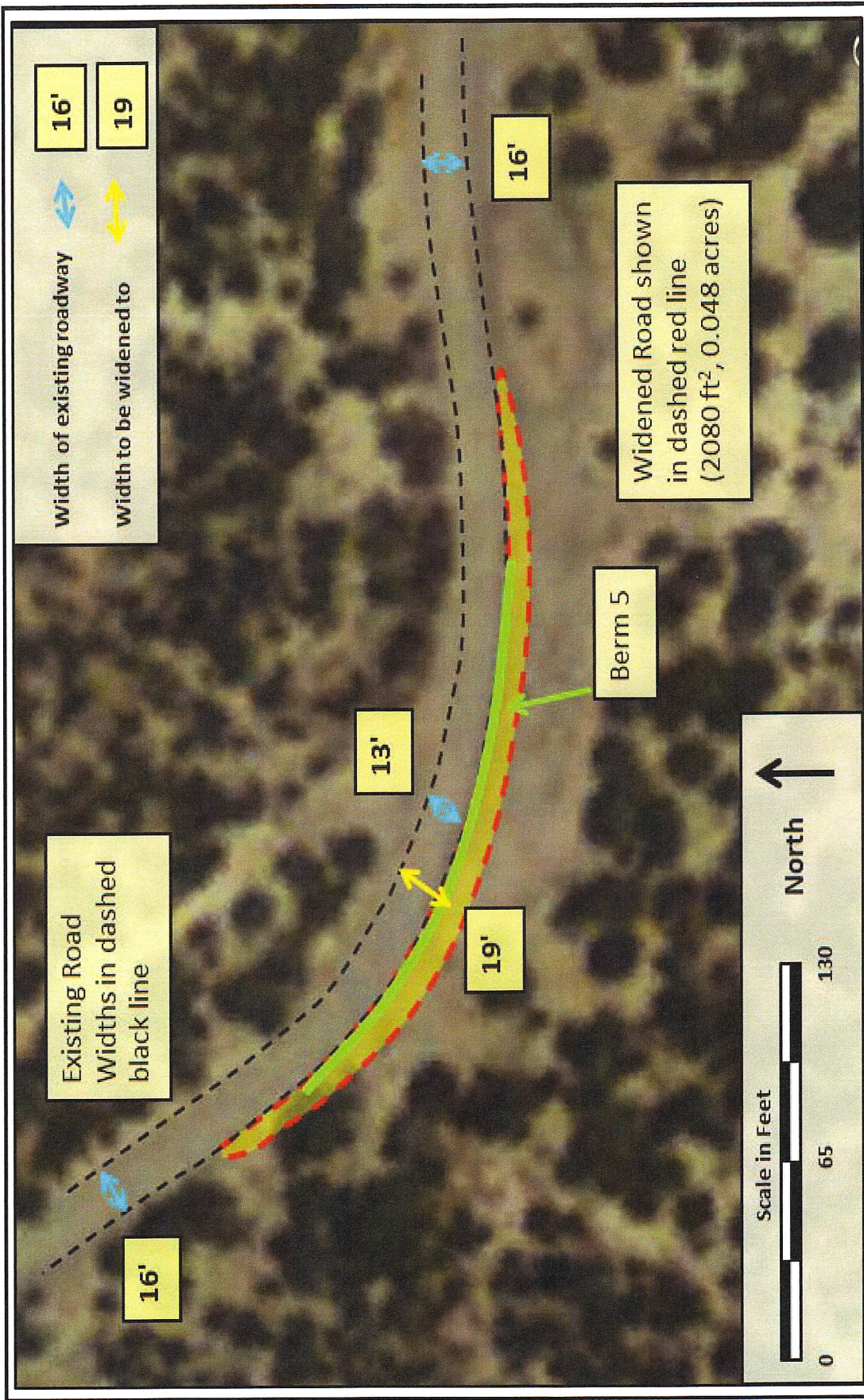
El Capitan Mines



<p>R.T. Hicks Consultants, Ltd 901 Rio Grande Blvd NW Suite F-142 Albuquerque, NM 87104 505-266-5004</p>	<p>Widened Curve and Berms 2 and 3 on Forest Road 489A, El Capitan Mine to NM 246, Lincoln County, NM</p>	<p>Plate 3b</p>
<p>El Capitan Mines</p>	<p>June, 2016</p>	

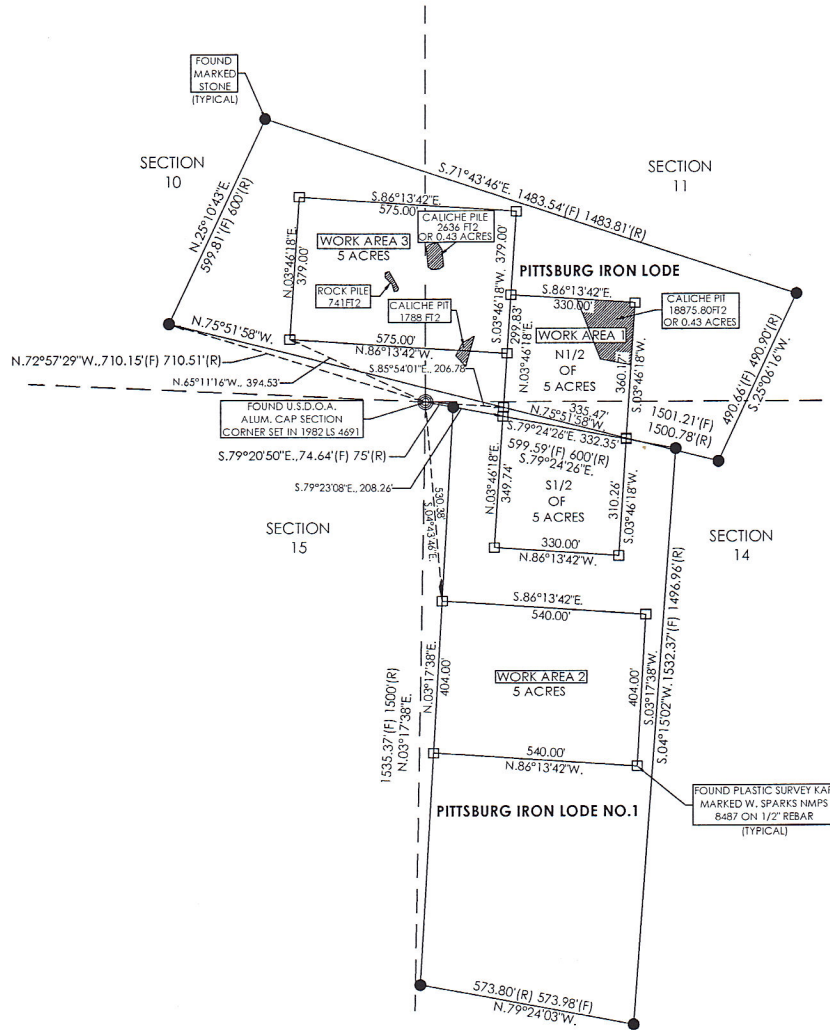
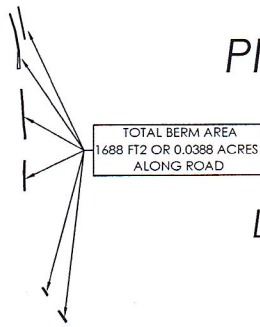


<p>R.T. Hicks Consultants, Ltd 901 Rio Grande Blvd NW Suite F-142 Albuquerque, NM 87104 505-266-5004</p>	<p>Berm 4 on 2011 Aerial Photograph of Forest Road 489A From El Capitan Mine to NM 246, Lincoln County, NM</p>	<p>Plate 3c</p>
<p>El Capitan Mines</p>	<p>June, 2016</p>	



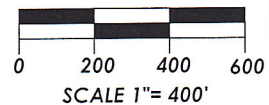
<p>R.T. Hicks Consultants, Ltd 901 Rio Grande Blvd NW Suite F-142 Albuquerque, NM 87104 505-266-5004</p>	<p>Berm 5 on 2011 Aerial Photograph of forest Road 489A From El Capitan Mine to NM 246, Lincoln County, NM</p>	<p>Plate 3d</p>
<p>El Capitan Mines</p>	<p>June, 2016</p>	

AREA WITHIN
PITTSBURG IRON LODGE AND
PITTSBURG IRON LODGE NO.1 IN
SECTIONS 10, 11 AND 14,
T.8S., R.14E., N.M.P.M.,
LINCOLN COUNTY, NEW MEXICO.



NOTES:

- 1) THIS SURVEY IS BASED ON CORNERS FOUND IN PLACE.
- 2) BEARINGS SHOWN ARE FROM GPS FIELD MEASUREMENTS.
- 3) (R)= RECORD DISTANCE, (F)= FIELD DISTANCE

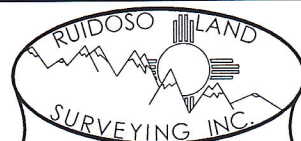


I, WYATT A. SPARKS, HAVE CONDUCTED AND AM RESPONSIBLE FOR THIS SURVEY, AND THAT THIS SURVEY AND PLAT MEET THE MINIMUM STANDARDS FOR SURVEYING IN NEW MEXICO.



WYATT A. SPARKS
R.P.L.S.-N.M. #8487

DATE



2907 1/2 SUDDERTH DRIVE,
RUIDOSO, N.M. 88345 PH. 257-2818
SCALE 1"=400' JOB # 4457
DATE 5/20/2016
DRAFTER KAS SHEET 1 OF 1