

Application for Modification 20-1

From: [Robert Newcomer](#)
To: [Ennis, David, EMNRD](#)
Cc: [Anthony A. Gallegos](#); [Tyler Lown Vandenburg](#)
Subject: [EXT] Menefee Mining Corporation Black Spring Mine MK026MN
Date: Monday, July 6, 2020 9:44:15 AM
Attachments: [Map of Area040920.pdf](#)
[Toltec Mesa Robert Newcomer Menefee Mining Black Spring Area 5.13.20.pdf](#)

Hi DJ,

I hope you are all well at your end and making the best of the craziness in the world right now. Menefee is trying to advance things and get some reclamation done at the mine site this summer. We obviously all have to honor the restrictions imposed by the State and local authorities and will keep everyone one as safe as possible in the process.

I wanted to let you know that Menefee is making arrangements to rip and seed approximately 4 acres of previously disturbed mine area (light colored area in the attachment). We are hoping to get this done this month before the monsoon rains. This work is in accordance with Modification 18-1 to their Permit no. MK026MN. I've attached a copy of the seed mix and amounts being ordered. This mix is the same as what was placed last year at the mine (there is one substitution in the mix, a Crested wheatgrass for the Slender wheatgrass).

We anticipate staking the perimeter and then ripping the area to be reclaimed/seeded in the next few weeks. We are ordering the seed today and will complete the seeding work after that. We will also go out before seeding and stake one-acre sub areas to allow more accurate distribution of the seed. The ripping and seeding will be done by Menefee personnel and a local contractor, similar to last year.

Please let me know if you need any additional information or have questions. I will try to give you sufficient notice as we get closer to seeding should you want to make an inspection.

Best Wishes,

Bob

Bob Newcomer, RG, CPG
Environmental and Water Resources Consultant
Toltec Mesa Resources LLC
7823 Quintana Dr. NE
Albuquerque, NM 87109
(505) 238-4770

phone call 07-06-2020: Menefee also planning on adding a power screen to the mine operations. Hereby included in this modification 20-1.

Black Spring Mine



Active Mine Area, Reseed Area and Overlap

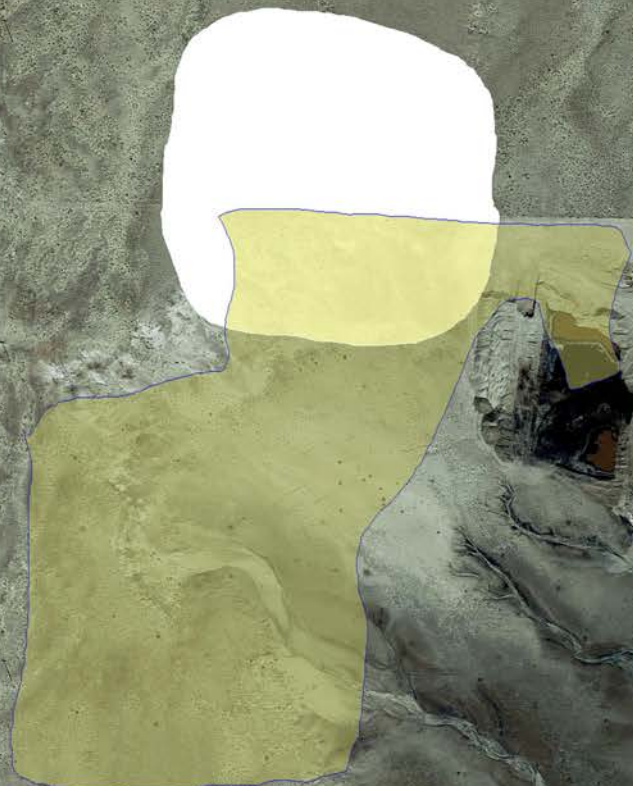
Active Mine = 6.7 acres + roads

Reseed Area = 3.8 acres

Date = April 9, 2020

Legend

-  Active Mine04092020
-  Area to be Seeded



24/7 Customer Support 855-466-4459

RTS SERVICE INDUSTRIES CONTACT US

HEAVY EQUIPMENT > MOBILE AGGREGATE PRODUCTS > SCREENING PLANTS >

SCREEN MACHINE INDUSTRIES SCALPER 107T SCREENING PLANT

SCREEN MACHINE INDUSTRIES SCALPER 107T SCREENING PLANT

QUESTIONS?





The Scalper 107T is a patented, heavy-duty, track-mounted screening plant designed to screen rock, soils, sand, gravel, coal, concrete and more.

DUAL-SCREEN DESIGN

The center support beam between the two screen boxes carries the load from the dump point through the frame and all the way to the ground.

WIRELESS REMOTE OPERATION

Cattron® wireless remote control with 100 yards creates true portability by never having to leave the safety and comfort of the feed operators cab while in control of track movement and machine operation.

SMOOTH START® TECHNOLOGY

This feature prolongs machine and component life by eliminating violent shaking during warm-

**AVAILABLE TO
RENT OR BUY**

**DOWNLOAD
BROCHURE**

QUESTIONS?