

Figure 3. Drilling Locations

**PART 3 MINIMAL IMPACT EXPLORATION OPERATION PERMIT APPLICATION**  
**Cebolleta Exploration Project**  
**Submitted on: March 14, 2023**

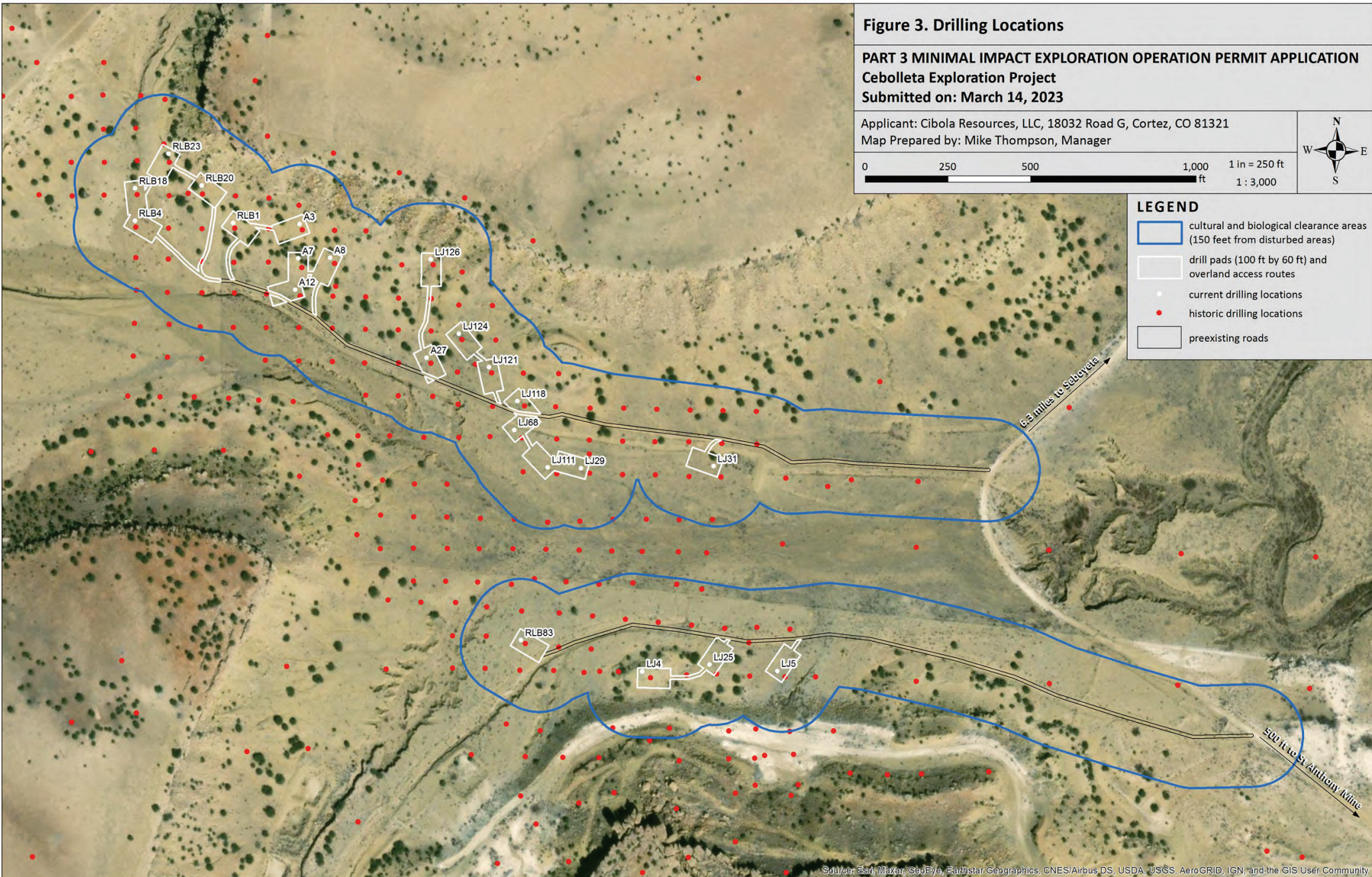
Applicant: Cibola Resources, LLC, 18032 Road G, Cortez, CO 81321  
Map Prepared by: Mike Thompson, Manager

0 250 500 1,000 1 in = 250 ft  
ft 1 : 3,000



**LEGEND**

- cultural and biological clearance areas (150 feet from disturbed areas)
- drill pads (100 ft by 60 ft) and overland access routes
- current drilling locations
- historic drilling locations
- preexisting roads



Source: Esri, Maxar, GeoEye, Earthstar Geographics, CNES/Airbus DS, USDA, USGS, AeroGRID, IGN, and the GIS User Community