

Area	2023				TOTAL Area (ac)
	Steeply Sloped Area (ac)	Flat Areas & Roads Area (ac)	Reclamation Grade Slopes Area (ac)	Pit Lake Area (ac)	
SWRDF	176.2	139.1	0.0	0.0	315.3
Hanover Mountain Mine	41.2	131.4	0.0	0.0	172.6
Magnetite Tailings Impoundment	17.0	5.3	0.0	0.0	22.3
Low Grade Ore/Waste Rock Facility	7.0	7.6	0.0	0.0	14.6
North Overburden Stockpile & Haul Road	0.0	2.6	0.0	0.0	2.6
Main Tailings Impoundment & Reclaim Pond	40.1	126.3	0.0	0.0	166.4
Roads	0.0	116.2	0.0	0.0	116.2
Benches	0.0	0.0	0.0	0.0	0.0
Continental Pit	0.0	17.4	0.0	48.6	66.0
TOTALS	281.6	545.9	0.0	48.6	876.1

2023 CONTINENTAL MINE CCP

YEAR 1 CLOSURE AREAS FOR HIGHEST LIABILITY COST YEAR CALCS (END OF 2023)

SHEET NUMBER: 3
 REVISION NUMBER: 0

PREPARED BY: **TELESTO SOLUTIONS INCORPORATED**

PREPARED FOR: **FREEMPORT-McMORAN**

DATE	2/14/2023
PROJECT	200189H
TASK NUMBER	001
DRAWN BY	TT
PROJECT ENGINEER	JC
CHECKED BY	JC

REVISIONS				
#	DESCRIPTION	DATE	BY	APPROVED
1	DRAFT FOR REVIEW	2/14/2023	TT	JC

DRAFT

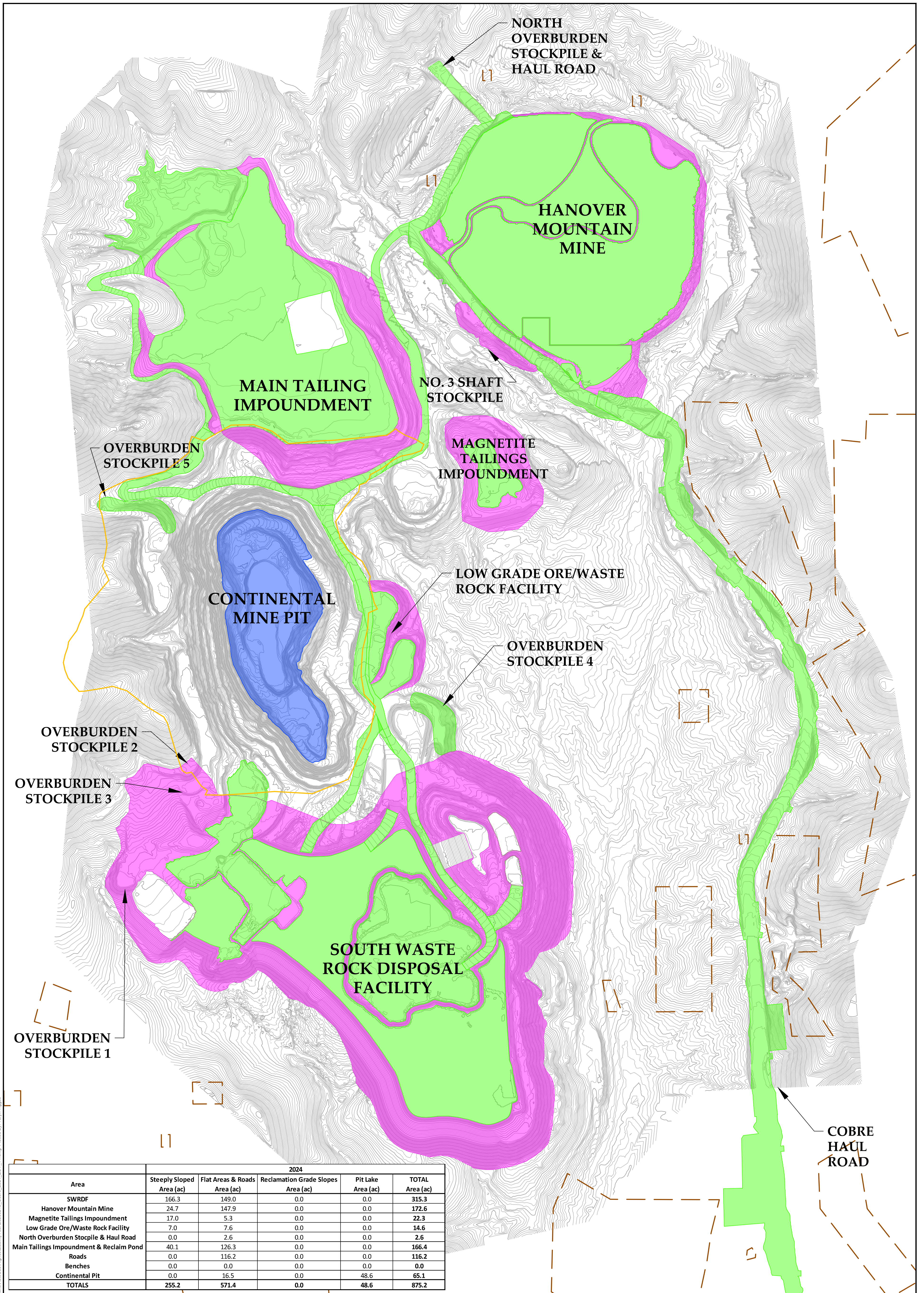
LEGEND / NOTES

- PIT LAKE AREA
- SLOPED AREA - ANGLE OF REPOSE
- SLOPED AREA - BENCHED AT 3.5:1
- FLAT AREA
- OPSDA
- CONTINENTAL MINE PERMIT BOUNDARY

SCALE IN FEET: 0 to 500

COORDINATE SYSTEM: CHINO LOCAL MINE

Date: 2/14/2023 3:17:08 PM File: R:\Cobres\CP-RC\2023\Calculations\AreaCalc\HighLiabilityYear2023\05_Cobre_2023_EOV_TT.dwg Plotted By: Tarryn Tigges



Area	2024				TOTAL Area (ac)
	Steeply Sloped Area (ac)	Flat Areas & Roads Area (ac)	Reclamation Grade Slopes Area (ac)	Pit Lake Area (ac)	
SWRDF	166.3	149.0	0.0	0.0	315.3
Hanover Mountain Mine	24.7	147.9	0.0	0.0	172.6
Magnetite Tailings Impoundment	17.0	5.3	0.0	0.0	22.3
Low Grade Ore/Waste Rock Facility	7.0	7.6	0.0	0.0	14.6
North Overburden Stockpile & Haul Road	0.0	2.6	0.0	0.0	2.6
Main Tailings Impoundment & Reclaim Pond	40.1	126.3	0.0	0.0	166.4
Roads	0.0	116.2	0.0	0.0	116.2
Benches	0.0	0.0	0.0	0.0	0.0
Continental Pit	0.0	16.5	0.0	48.6	65.1
TOTALS	255.2	571.4	0.0	48.6	875.2

2023 CONTINENTAL MINE CCP

YEAR 2 CLOSURE AREAS FOR HIGHEST LIABILITY COST YEAR CALCS (END OF 2024)

SHEET NUMBER: 4

REVISION NUMBER: 0

PREPARED BY: **TELESTO SOLUTIONS INCORPORATED**

PREPARED FOR: **FREEMET-McMoRAN**

DATE	2/14/2023
PROJECT	200189H
TASK NUMBER	001
DRAWN BY	TT
PROJECT ENGINEER	JC
CHECKED BY	JC

REVISIONS				
#	DESCRIPTION	DATE	BY	APPROVED
1	DRAFT FOR REVIEW	2/14/2023	TT	JC

DRAFT

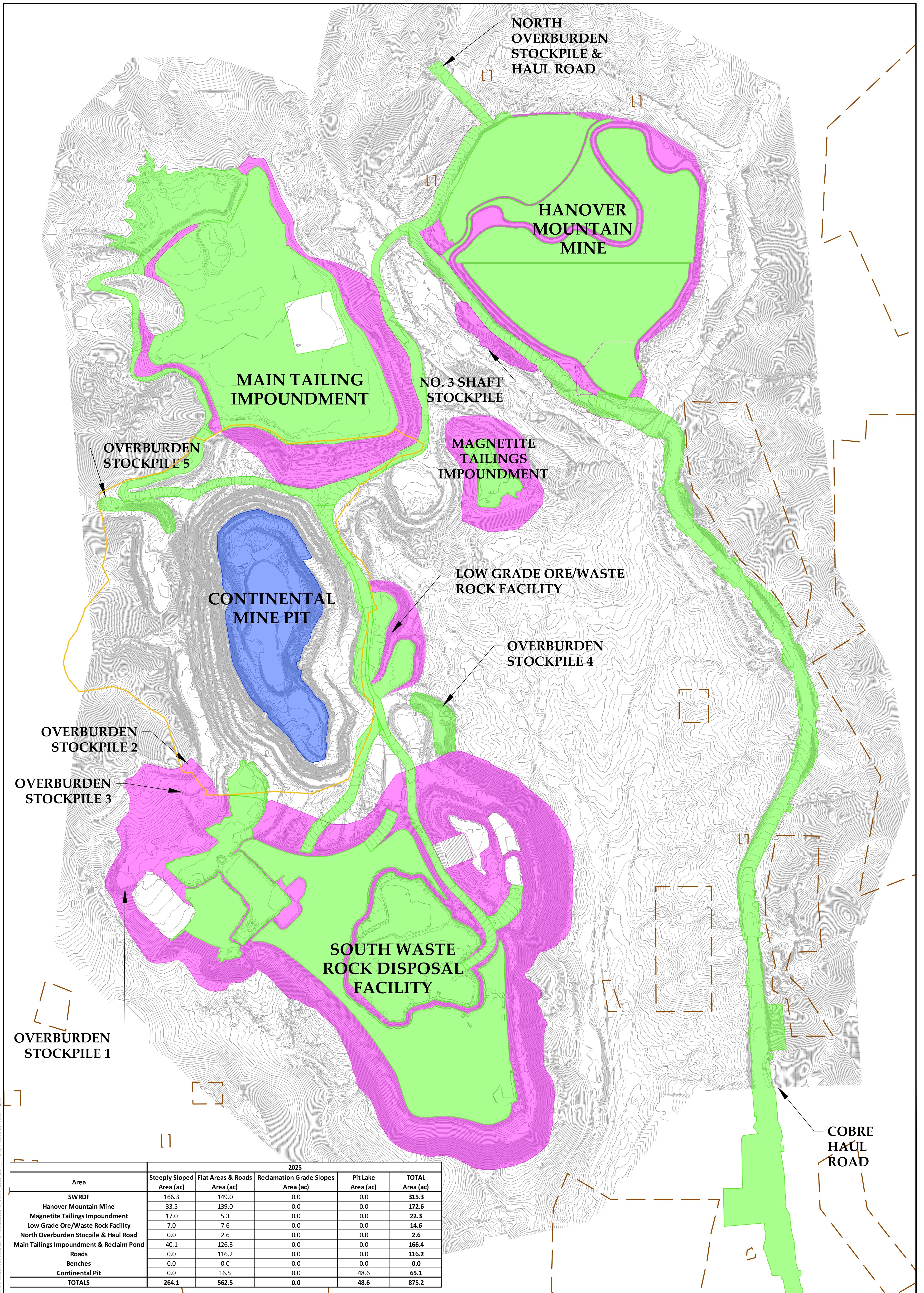
LEGEND / NOTES

- PIT LAKE AREA
- SLOPED AREA - ANGLE OF REPOSE
- SLOPED AREA - BENCHED AT 3.5:1
- FLAT AREA
- OPSDA
- CONTINENTAL MINE PERMIT BOUNDARY

SCALE IN FEET: 0 to 500

COORDINATE SYSTEM: CHINO LOCAL MINE

Date: 2/14/2023 3:21:14 PM File: R:\Cobres\CP-RC\2023\Calculations\AreaCalc\HighLiabilityYear2024\IS_Cobres_2024_EOV_TT.dwg Plotted By: Taryn Tigges



Area	2025				
	Steeply Sloped Area (ac)	Flat Areas & Roads Area (ac)	Reclamation Grade Slopes Area (ac)	Pit Lake Area (ac)	TOTAL Area (ac)
SWRDF	166.3	149.0	0.0	0.0	315.3
Hanover Mountain Mine	33.5	139.0	0.0	0.0	172.6
Magnetite Tailings Impoundment	17.0	5.3	0.0	0.0	22.3
Low Grade Ore/Waste Rock Facility	7.0	7.6	0.0	0.0	14.6
North Overburden Stockpile & Haul Road	0.0	2.6	0.0	0.0	2.6
Main Tailings Impoundment & Reclaim Pond	40.1	126.3	0.0	0.0	166.4
Roads	0.0	116.2	0.0	0.0	116.2
Benches	0.0	0.0	0.0	0.0	0.0
Continental Pit	0.0	16.5	0.0	48.6	65.1
TOTALS	264.1	562.5	0.0	48.6	875.2

2023 CONTINENTAL MINE CCP

YEAR 3 CLOSURE AREAS FOR HIGHEST LIABILITY COST YEAR CALCS (END OF 2025)

SHEET NUMBER: 5

REVISION NUMBER: 0

PREPARED BY: **TELESTO SOLUTIONS INCORPORATED**

PREPARED FOR: **FREEMPORT-McMORAN**

DATE	2/14/2023
PROJECT	200189H
TASK NUMBER	001
DRAWN BY	TT
PROJECT ENGINEER	JC
CHECKED BY	JC

REVISIONS				
#	DESCRIPTION	DATE	BY	APPROVED
1	DRAFT FOR REVIEW	2/14/2023	TT	JC

DRAFT

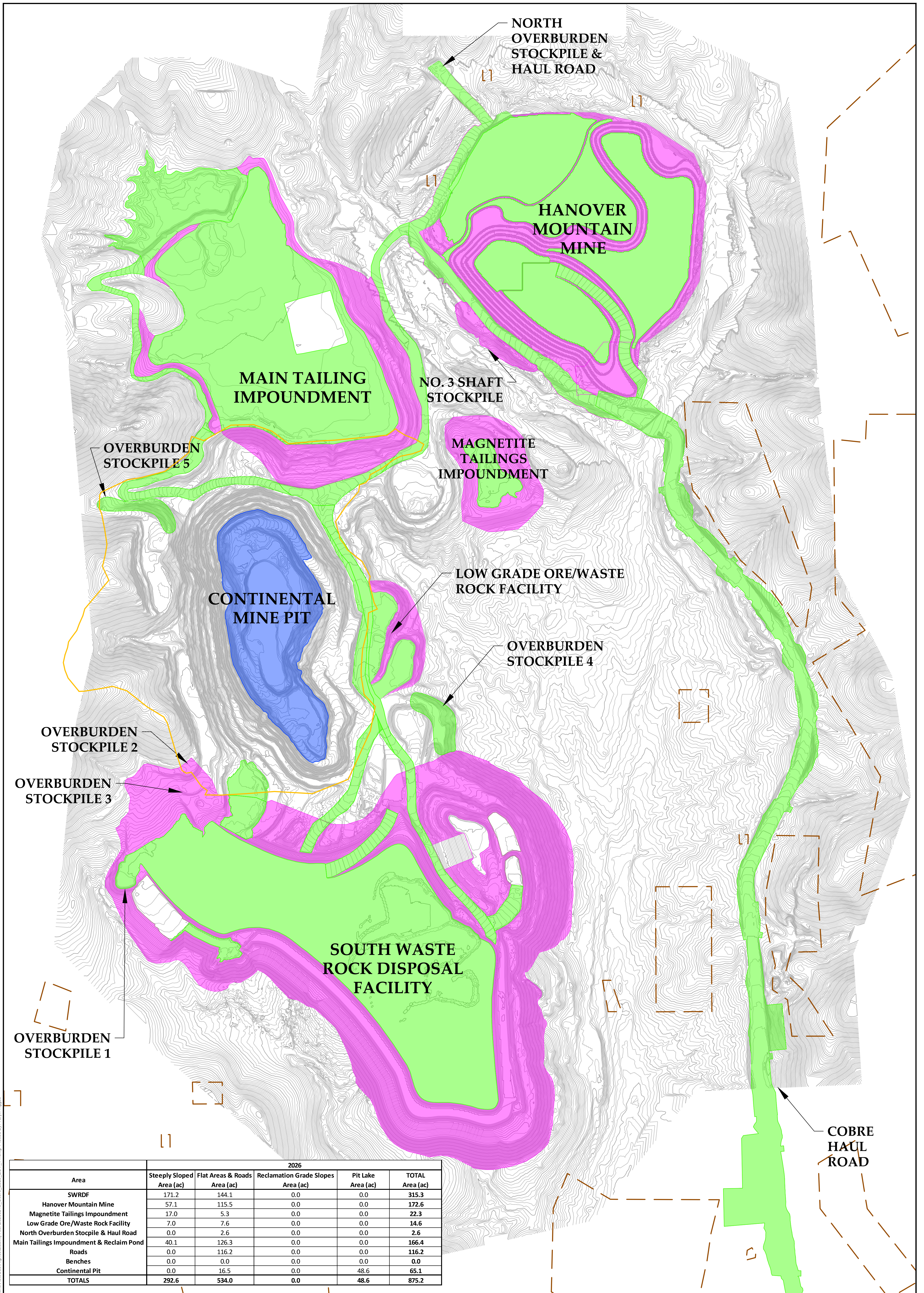
LEGEND / NOTES

- PIT LAKE AREA
- SLOPED AREA - ANGLE OF REPOSE
- SLOPED AREA - BENCHED AT 3.5:1
- FLAT AREA
- OPSDA
- CONTINENTAL MINE PERMIT BOUNDARY

SCALE IN FEET: 0 to 500

COORDINATE SYSTEM: CHINO LOCAL MINE

Date: 2/14/2023 2:54:35 PM R:\Cobres\CCP\FCE\2023\Calculations\AreaCalc\HighLiabilityYear2025\05_Cobre_2025_EOY_TT.dwg Plotted By: Tamm Tiggles



Area	2026				TOTAL Area (ac)
	Steeply Sloped Area (ac)	Flat Areas & Roads Area (ac)	Reclamation Grade Slopes Area (ac)	Pit Lake Area (ac)	
SWRDF	171.2	144.1	0.0	0.0	315.3
Hanover Mountain Mine	57.1	115.5	0.0	0.0	172.6
Magnetite Tailings Impoundment	17.0	5.3	0.0	0.0	22.3
Low Grade Ore/Waste Rock Facility	7.0	7.6	0.0	0.0	14.6
North Overburden Stockpile & Haul Road	0.0	2.6	0.0	0.0	2.6
Main Tailings Impoundment & Reclaim Pond	40.1	126.3	0.0	0.0	166.4
Roads	0.0	116.2	0.0	0.0	116.2
Benches	0.0	0.0	0.0	0.0	0.0
Continental Pit	0.0	16.5	0.0	48.6	65.1
TOTALS	292.6	534.0	0.0	48.6	875.2

2023 CONTINENTAL MINE CCP

YEAR 4 CLOSURE AREAS FOR HIGHEST LIABILITY COST YEAR CALCS (END OF 2026)

SHEET NUMBER: 6

REVISION NUMBER: 0

PREPARED BY: **TELESTO SOLUTIONS INCORPORATED**

PREPARED FOR: **FREEMO McCORMAN**

DATE	2/14/2023
PROJECT	200189H
TASK NUMBER	001
DRAWN BY	TT
PROJECT ENGINEER	JC
CHECKED BY	JC

REVISIONS				
#	DESCRIPTION	DATE	BY	APPROVED
1	DRAFT FOR REVIEW	2/14/2023	TT	JC

DRAFT

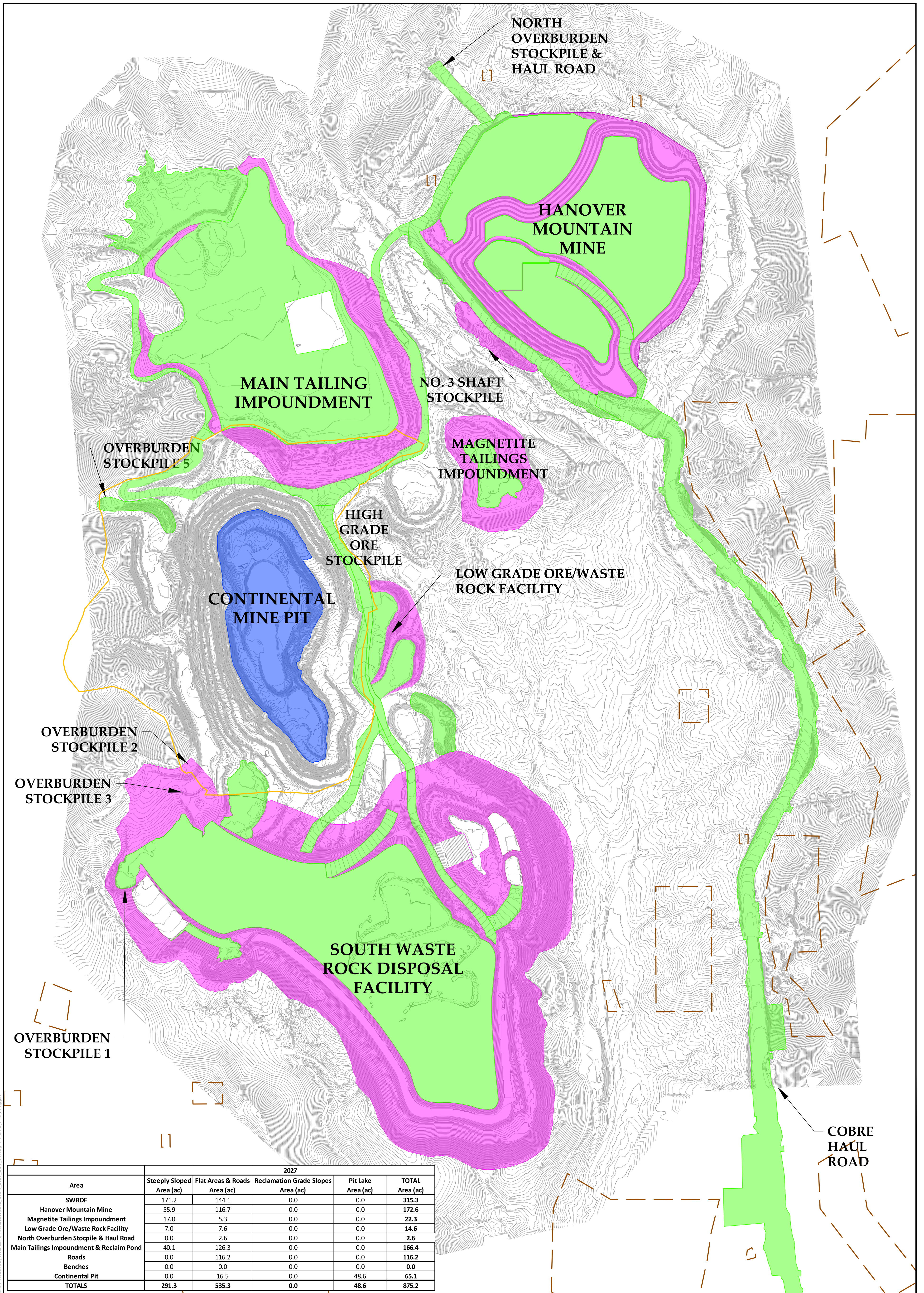
LEGEND / NOTES

- PIT LAKE AREA
- SLOPED AREA - ANGLE OF REPOSE
- SLOPED AREA - BENCHED AT 3.5:1
- FLAT AREA
- OPSDA
- CONTINENTAL MINE PERMIT BOUNDARY

0 500
SCALE IN FEET

COORDINATE SYSTEM
CHINO LOCAL MINE

Date: 2/14/2023 4:23:28 PM R:\Cobres\CP-RC\2023\Calculations\AreaCalc\HighLiabilityYear2026\15_Cobres_2026_EOV_TT.dwg Plotted By: Taryn Tigges



2027					
Area	Steeply Sloped Area (ac)	Flat Areas & Roads Area (ac)	Reclamation Grade Slopes Area (ac)	Pit Lake Area (ac)	TOTAL Area (ac)
SWRDF	171.2	144.1	0.0	0.0	315.3
Hanover Mountain Mine	55.9	116.7	0.0	0.0	172.6
Magnetite Tailings Impoundment	17.0	5.3	0.0	0.0	22.3
Low Grade Ore/Waste Rock Facility	7.0	7.6	0.0	0.0	14.6
North Overburden Stockpile & Haul Road	0.0	2.6	0.0	0.0	2.6
Main Tailings Impoundment & Reclaim Pond	40.1	126.3	0.0	0.0	166.4
Roads	0.0	116.2	0.0	0.0	116.2
Benches	0.0	0.0	0.0	0.0	0.0
Continental Pit	0.0	16.5	0.0	48.6	65.1
TOTALS	291.3	535.3	0.0	48.6	875.2

2023 CONTINENTAL MINE CCP

YEAR 5 CLOSURE AREAS FOR HIGHEST LIABILITY COST YEAR CALCS (END OF 2027)

SHEET NUMBER: 7

REVISION NUMBER: 0

PREPARED BY: **TELESTO SOLUTIONS INCORPORATED**

PREPARED FOR: **FREEMET-McMoRAN**

DATE	2/14/2023
PROJECT	200189H
TASK NUMBER	001
DRAWN BY	TT
PROJECT ENGINEER	JC
CHECKED BY	JC

REVISIONS				
#	DESCRIPTION	DATE	BY	APPROVED
1	DRAFT FOR REVIEW	2/14/2023	TT	JC

DRAFT

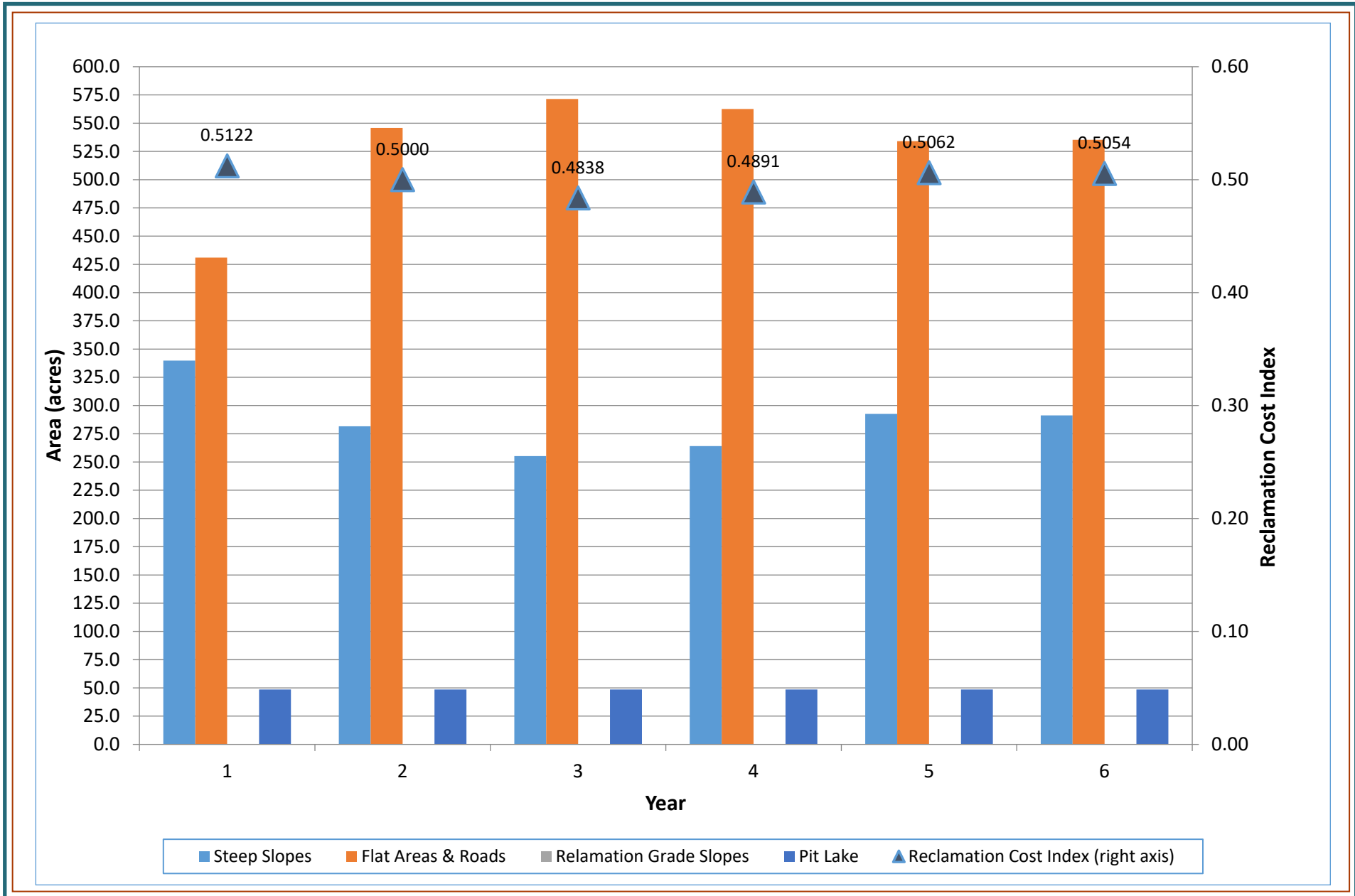
LEGEND / NOTES

- PIT LAKE AREA
- SLOPED AREA - ANGLE OF REPOSE
- SLOPED AREA - BENCHED AT 3.5:1
- FLAT AREA
- OPSDA
- CONTINENTAL MINE PERMIT BOUNDARY

SCALE IN FEET: 0 to 500

COORDINATE SYSTEM: CHINO LOCAL MINE

Date: 2/16/2023 4:25:20 PM R:\Cobres\CP-RC\2023\Calculations\HighLiabilityYear2027\CP_2027_EOY_11.dwg Printed By: Taryn Tiggles



PROJECT: 200189h TASK 001
 PREPARED BY: **TELESTO**
 SOLUTIONS INCORPORATED

**FIGURE 8
 HIGHEST RECLAMATION COST YEAR CALCULATION RESULTS**

PREPARED FOR:
Freeport-McMoRan