



August 12, 2025

Kevin Barnes, Reclamation Specialist  
New Mexico Mining and Minerals Division  
Mining Act Reclamation Program  
1220 S. St. Francis Drive  
Santa Fe, NM 87505  
(505) 470-5354

Kevin:

As we discussed on August 5, 2025 via telephone, Miocene, LLC would like to request the release of three former mines of reclaimed land, all within the Brie 1 Mine which falls under NMM&MD Permit # MK039MN. The total acreage for the three (3) former mines that are under this Release Request totals 21.45 acres.

The three former mines and their acreages are as follows:

1. **Brie 1 Mine – Section 12 / 1:** Seeded June 24, 2025.
  - a. Total Acreage 5.77 acres (Figure 1).
2. **Brie 1 Mine – Section 12 / 1:** Seeded June 24, 2025.
  - a. Total Acreage 2.08 acres (Figure 1).
  - b. Note that the former Section 12/1 mine of 5.77 acres and 2.08 acres also have a former mine access road that totals 0.6 acres in land area. Both areas straddle the Section 12 and 1 east / west line shown on Figure 1.
  - c. Adding the former Section 12/1 mine of 5.77 acres to the smaller mine of 2.08 acres, and including the former mine road of which is 0.6 acre in land area, the total acreage shown in Figure 1 for the release request is 8.45 acres.
3. **Brie 1 Mine – Section 3 – SE:** Seeded August 5, 2025. Total acreage = 13.0 acres (Figure 2). Note that the smaller 3.25-acre area in the southwest corner of Figure 2 was previously released by the NMM&MD but needed additional reseeding. The 3.25-acre area was reseeded on August 5, 2025 along with the larger 13.0-acre former mine area shown in blue shading in Figure 2.

For both the 1) and 2) Brie 1 Mine – Section 12 / 1 and 3) Brie 1 Mine – Section 3 – SE former mine areas detailed above, the site topsoil was emplaced using a grader which creates furrows

ranging in depth of 4-inches to 6-inches along approximated elevation contours to mitigate erosion potentially caused by rainfall induced water flow. The grading creates a relatively level surface but does not compact the topsoil, instead, the topsoil is loose and well aerated. Both attached figures depict the reclaimed area and list GPS corner locations of the rectangular-shaper reclamation areas to allow for geolocation during field inspection. Following completion of the grading, the seed was broadcast using a mechanized seed broadcaster on the back of a tractor which is trailing a spring tooth harrow. The seed mixture is listed in Table 1 below and the application rate was 29 lbs. / acre.

**Table 1 – Seed Mixture Applied to Brie 1 Mine – Section 12 / 1 and Section 3 – SE Former Mine Areas**

#	Plant Common Name	Percentage of Seed Mix	Lbs. / Acre Application Rate
1	Blue Grama	17.12 %	5.0
2	Galleta Viva	8.44 %	2.4
3	Indian Ricegrass, Paloma	7.50 %	2.2
4	Western Wheatgrass, Arriba	16.50 %	4.8
5	Mountain Bromegrass, Bromar	21.71 %	6.3
6	Blue Flax, Apprar	3.60 %	1.0
7	Three-Leaf Sumac (Substitute for Mexican Cliffrose)	3.91 %	1.1
8	Mexican Hat	3.68 %	1.1
9	Four-Wing Saltbush	17.53 %	5.1
	<b>TOTALS</b>	<b>99.99 %</b>	<b>29.00</b>

As we discussed today, Miocene is preparing a check today for \$250 to meet the NMM&MD Review Fee requirement for this request to release of three former mines of reclaimed land. Based on the current internal schedule, the check will be available to mail to your offices in Santa Fe by next week.

August 12, 2025

---

If you have any comments, questions, or if you need additional information or clarification, please contact me at your earliest convenience.

Thank you, Kevin.



Darin Klewsaat  
Technical Services Manager   
1819 Denver West Dr. Suite 350  
Lakewood, CO 80401  
Cell: (720) 880-0672  
[www.horizonag.com](http://www.horizonag.com)

Attachments: Figures 1 and 2

Boundary of Section 12 / 1 Mine  
Disturbance Area (MDA) = 5.77 acres

Backfilled Test Pits

Boundary of Luke Ahlman Pit  
Section 12 / 1 Mine  
Disturbance Area (MDA) Total  
= 2.08 acres

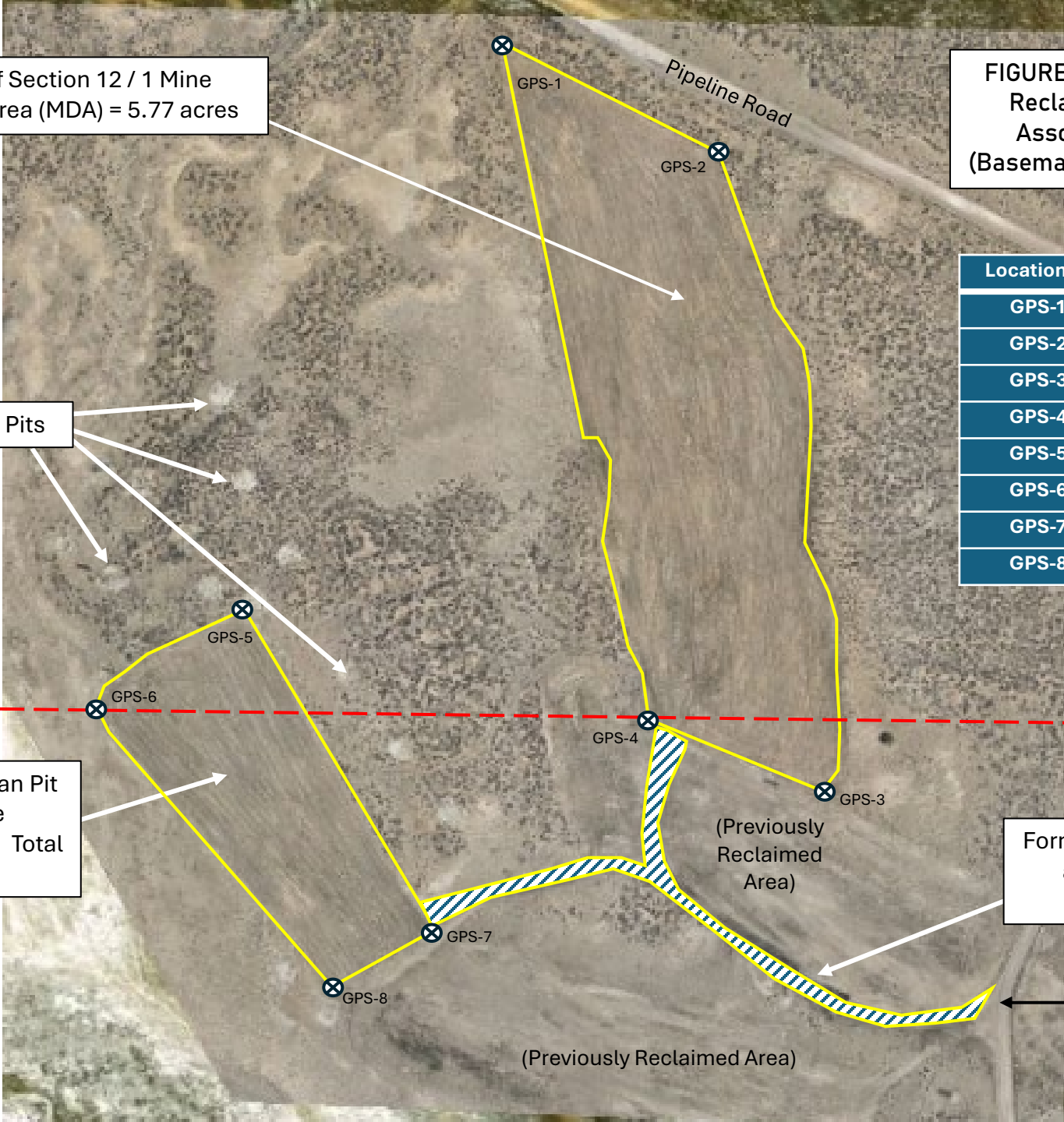


FIGURE 1 – August 2025 Request for Release of  
Reclaimed Former Section 12 / 1 Mines and  
Associated Mine Road Totaling 8.45 acres  
(Basemap: July 11, 2025 Section 12 / 1 Drone Flight.

Location ID	Latitude	Longitude
GPS-1	N 35.901943°	W -107.421747°
GPS-2	N 35.901557°	W -107.420787°
GPS-3	N 35.899182°	W -107.420234°
GPS-4	N 35.899442°	W -107.421076°
GPS-5	N 35.899846°	W -107.422930°
GPS-6	N 35.899527°	W -107.423575°
GPS-7	N 35.898658°	W -107.422091°
GPS-8	N 35.898477°	W -107.422544°

Section 1

Section 12

Former Mine Access Road scarified, furrowed,  
and seeded. Road area total (hatched)  
= 0.6 acre

Section 12/1 and 7  
Mine Access Road

(Previously Reclaimed Area)

(Previously  
Reclaimed  
Area)

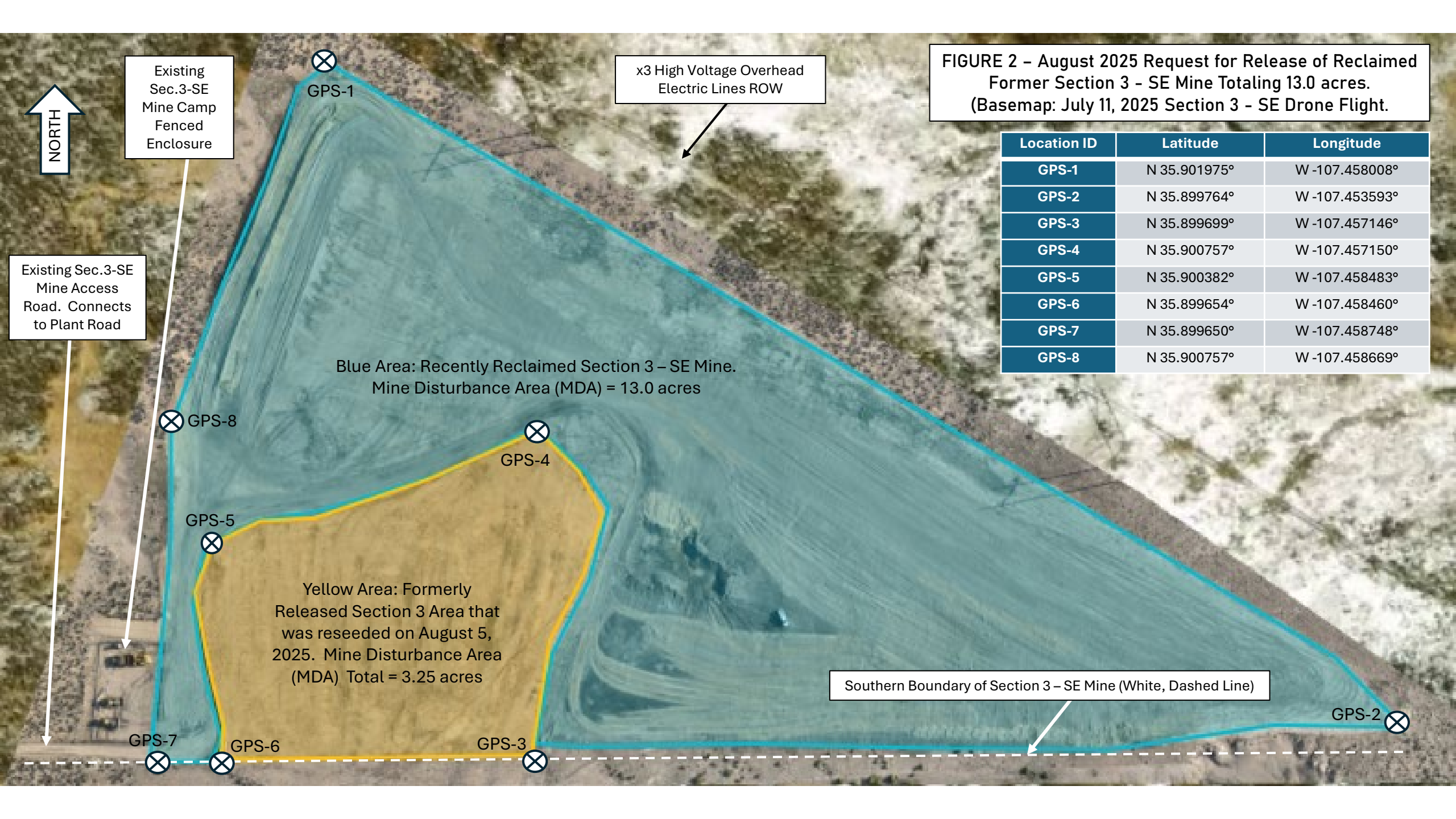


FIGURE 2 – August 2025 Request for Release of Reclaimed Former Section 3 - SE Mine Totaling 13.0 acres.  
(Basemap: July 11, 2025 Section 3 - SE Drone Flight.

Location ID	Latitude	Longitude
GPS-1	N 35.901975°	W -107.458008°
GPS-2	N 35.899764°	W -107.453593°
GPS-3	N 35.899699°	W -107.457146°
GPS-4	N 35.900757°	W -107.457150°
GPS-5	N 35.900382°	W -107.458483°
GPS-6	N 35.899654°	W -107.458460°
GPS-7	N 35.899650°	W -107.458748°
GPS-8	N 35.900757°	W -107.458669°