

JC Imperial, LLC
Operator – Jim Crow Mine
PO Box 945
Duncan, AZ 85534

928-965-5277
lhbmining@gmail.com

03/03/2026

New Mexico Environment Department
Ground Water Quality Bureau / Mineral & Mining Division

Re: Request for the Modification of Permit No. GR065MN
Jim Crow Mine – Grant County, New Mexico

Dear Mr. Barnes:

JC Imperial, LLC (JCI”), operator of the Jim Crow Mine, respectfully submits this request for modification to Permit No. GR065MN, issued pursuant to 20.6.2 NMAC.

Purpose of Modification

JCI proposes to relocate the permitted discharge point for treated mine water from the currently authorized ponding area to a direct discharge into the adjacent ephemeral arroyo.

This modification:

- Does not increase discharge flow (maximum remains < 100 gallons per minute)
- Does not alter treatment processes
- Does not introduce new pollutants
- Does not increase pollutant loading
- Does not modify effluent limitations

The request is limited solely to relocation of the discharge point within the same drainage system.

Engineering & Environmental Considerations

Maximum discharge is approximately 0.22 cubic feet per second (100 gpm). This flow is minor relative to storm conveyance capacity of the receiving arroyo.

Energy dissipation measures, including installation of appropriately sized ripraps at the outfall, will prevent scouring or erosion. The discharge will not create perennial flow conditions or alter watershed hydrology.

Removal of the ponding area will allow reclamation of approximately 0.5 acres within the Imperial claim. Direct discharge reduces localized infiltration associated with the existing pond structure.

Water quality characteristics remain unchanged and will continue to comply with permit limitations and monitoring requirements.

Federal Coordination

On January 20, 2026, JC Imperial LLC submitted notification regarding this proposed discharge location change to:

Nicole Young
U.S. Environmental Protection Agency
Region 6

in coordination with the applicable NPDES authorization under Section 402 of the Clean Water Act.

JCI will provide NMED with copies of any EPA determinations related to this modification.

Request

JC Imperial, LLC respectfully requests approval of this modification to the Permit to authorize relocation of the discharge point as described herein.

The proposed discharge point location (32°49'0"N, 108°58'53"W, El. 4720) is shown on the attached Figure 1. Please contact us if additional information is required.

Leslie H. Billingsley
928-965-5277
Managing Member, JC Imperial, LLC

Frank G. Mueller
505-463-5812
Managing Member, JC Imperial, LLC

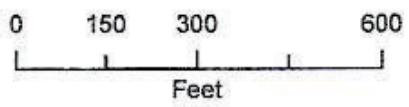
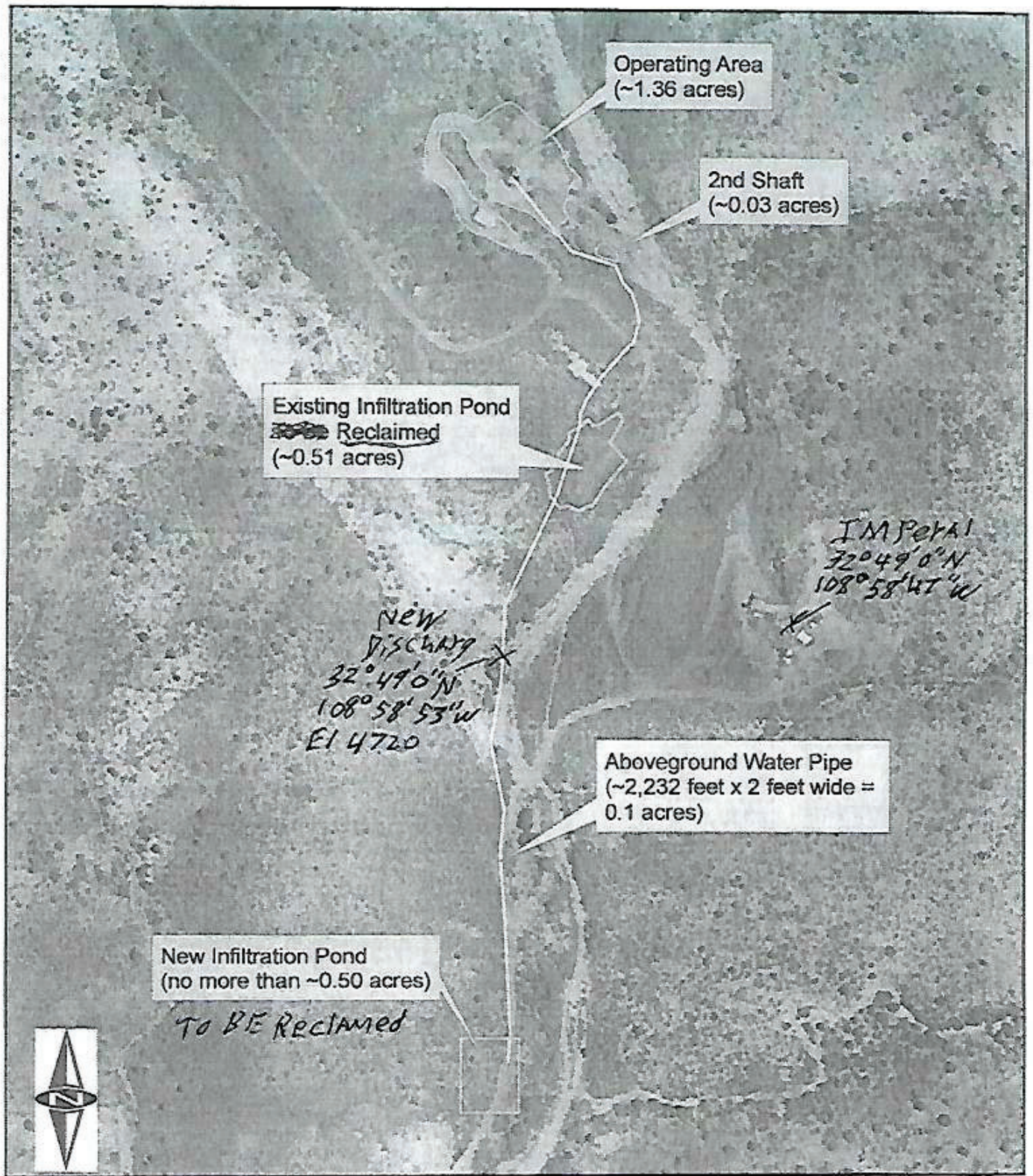


Figure 1
Jim Crow Mine
Modification 14-1, Permit No. GR065MN
Grant County, New Mexico

32°49'01"
 108°58'45"