

# Invitation to Bid: Abandoned Mine Lands Construction Services



ITB No. 40-52100-23-06111

---

AUGUST 24, 2023

NEW MEXICO ABANDONED MINE LAND PROGRAM

STATE OF NM ENERGY, MINERALS, AND NATURAL RESOURCES DEPARTMENT



# Meeting Information

---

This meeting will be recorded

To record your attendance at this non-mandatory meeting, please enter the following information in the meeting Chat:

- Name
- Title
- Company
- Address
- Email Address
- Telephone Number

# Summary of ITB

---

# Contact Information

---

- Contact Information:
  - Procurement Specialist: James Ortega, NM GSD SPD
  - Telephone No.: 505-795-2516
  - Email: [james.ortega@gsd.nm.gov](mailto:james.ortega@gsd.nm.gov)
- Technical Lead:
  - Meghan McDonald, New Mexico AML Program
  - Telephone No.: 505-629-9872
  - Email: [meghan.mcdonald@emnrd.nm.gov](mailto:meghan.mcdonald@emnrd.nm.gov)

# ITB Summary

---

- As-Needed (On-Call) Construction Services
- Contract Duration: 1 year with option to extend for an additional 9 years
- Multiple contracts will be awarded
- Work assigned on an as-needed basis, by means of a task order
- Work will be assigned based on contractor's ability to perform the work and price

# ITB Summary

---

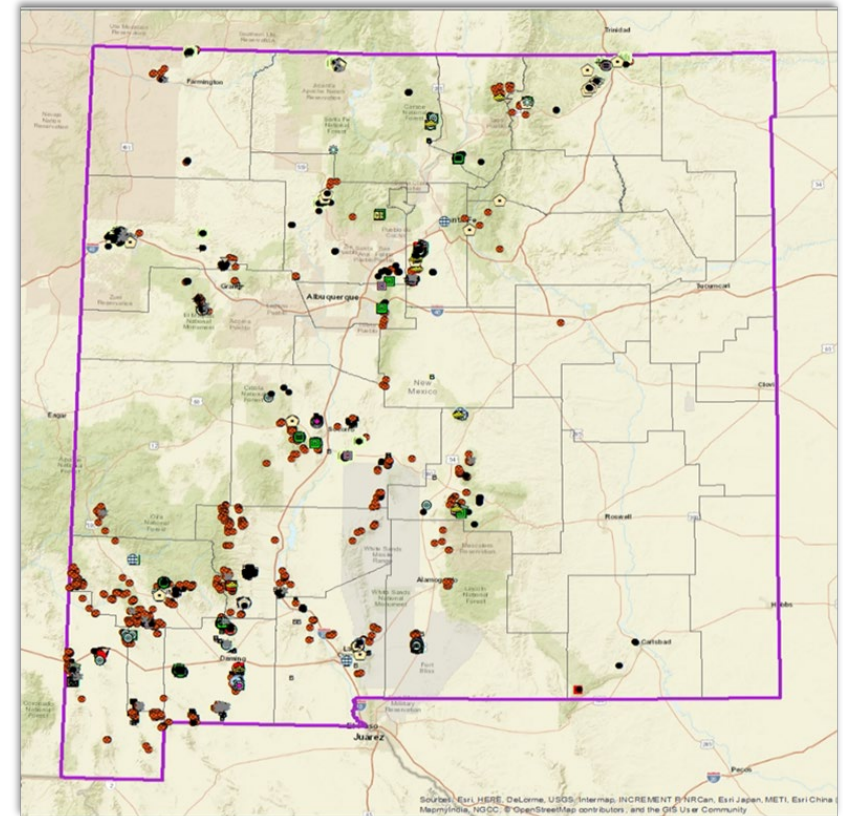
- **Bids due September 14, 2023 at 2:00 PM**
- Electronic bid submittals: <https://suppliers.scquest.com/stateofnewmexico/>
- Hard copy submittals: New Mexico General Services Department, State Purchasing Division
  - **Hand Deliver/courier:** 1100 S. Saint Francis Drive, Room 2016, Santa Fe, NM 87505 or
  - **US Mail:** PO Box 6850, Santa Fe, NM 87502-6850
- Late submissions will not be accepted
- Bid Opening: immediately following bid due date/time at NM SPD Bid Room
- Technical Questions to SPD Procurement Specialist or Technical Contact
- Amendments (if any) must be acknowledged for your bid to be considered responsive

# New Mexico AML Program Overview

---

# New Mexico AML Program

- Funded by OSMRE using a fee on coal production
- Additional funding from BIL
- Safeguarding and reclaiming abandoned mine lands in NM since 1981
- Over 15,000 abandoned mine features in the State of New Mexico
- 3,000+ Mine Openings Safeguarded to Date





# AML's Reclamation Priorities:

---

1. Protection of public health, safety, and property from immediate hazards, resulting from historic mining practices
2. Protection of public health, safety and general welfare from adverse effects of past mineral mining and processing practices, which do not constitute an extreme danger
3. Restoration of lands and waters degraded by adverse effects of past mining practices.





# AML Hazards

---





# AML Hazards (cont.)

---





# COAL WORK

Subsidence in Gallup



Coal Gob Washout



Coal Gob Reclamation near Raton







# HARD ROCK WORK

Cooke's Peak, Deming, NM

---



# Scope of Work

---



# Service Categories

---

- Earthwork Services
  - Revegetation Services
  - Drilling and Grouting Services
  - Specialty Services
- 
- Contractors may bid on any or all scope of work items they are licensed and qualified to perform.

# Earthwork Services

- Excavation
- Backfill
  - Shafts, adits, subsidence
- Geomorphic Reclamation
- Soil Covers
- Streambed Earthwork
- Mine fire excavation/soil mixing
- Stormwater and Erosion Control Structures





# Revegetation Services

- Application of soil amendments/fertilizers
- Seedling planting
- Hydroseeding
- Mulch





# Revegetation Services (cont.)

---



2001



2008



# Drilling and Grouting Services

---

- Exploratory geotechnical drilling
- Soil/rock sampling
- Ground Improvement
  - Drilling and grouting
  - Injection of fill materials
- Typical drilling depths <200 ft



# Specialty Services

---

- Safeguarding Structures
  - Bat gates
  - Bat cupolas
  - Polyurethane Foam (PUF) plugs
  - CSP in mine openings
  - Cable nets
- Fencing (steel, barbed wire, chain link, etc.)
- Rockfall protection
- Slope stabilization
- Welding





# Specialty Services (cont.)

---





# Specialty Services (cont.)

---





# Specialty Services (cont.)

---



# Bid Details

---



# Unit Price Schedule

- Unit prices are broken up into the following categories:
  - Labor (\$/hour)
  - Equipment (\$/hour, \$/day)
- Organized by Service Category:
  - Earthwork Services
  - Revegetation Services
  - Drilling and Grouting Services
  - Specialty Services
- You may submit a price for any or all items
- You do not have to submit a price for every row in each service category
- Do not include NMGR
- Pricing must be fixed for the full year; can negotiate changes at time of yearly extension

C		Earthwork Services	
69	C1	Pickup truck	\$/mile
70	C2	Support truck	\$/mile
71	C3	Support trailer	\$/day
72	C4	900 CFM air compressor	\$/day
73	C5	185 CFM air compressor	\$/day
74	C6	Job support trailer complete with tools	\$/day
75	C7	Light equipment transport	\$/mile
76	C8	Heavy equipment transport	\$/mile
77	C9	Skid steer - Caterpillar 262D or equivalent	\$/day
78	C10	Mini backhoe loader - Kubota B26 or equivalent	\$/day
79	C11	Backhoe loader - Caterpillar 310 or equivalent	\$/day
80	C12	Mini excavator/track hoe - Caterpillar 305 or equivalent	\$/day
81	C13	Excavator/track hoe - Caterpillar 325 or equivalent	\$/day
82	C14	Loader - Caterpillar 920 or equivalent	\$/day
83	C15	Grader - 140H Model, 185HP or equivalent	\$/day
84	C16	D-6 Caterpillar dozer - 185HP or equivalent	\$/day
85	C17	D-8 Caterpillar dozer - 305HP or equivalent	\$/day
86	C18	45HP tractor with disk or equivalent	\$/day
87	C19	12 yard dump truck	\$/day
88	C20	18 yard dump truck or belly dump	\$/day

# Subcontracting

---

- Subcontracting is Allowed (subcontractors must be approved by AML)
- Subcontracting costs cannot be marked up
- Contractor shall comply with 2 C.F.R. 200.318 through 200.326 for procurement of services or property.
  - Contractor may be required to provide EMNRD with evidence of competitive procurement for any subcontract, including records of advertisement of bid, proposals received, and methods to select each subcontractor.
- Any subcontract agreement shall include all provisions necessary to allow Contractor to meet its obligations and requirements.

# Materials

---

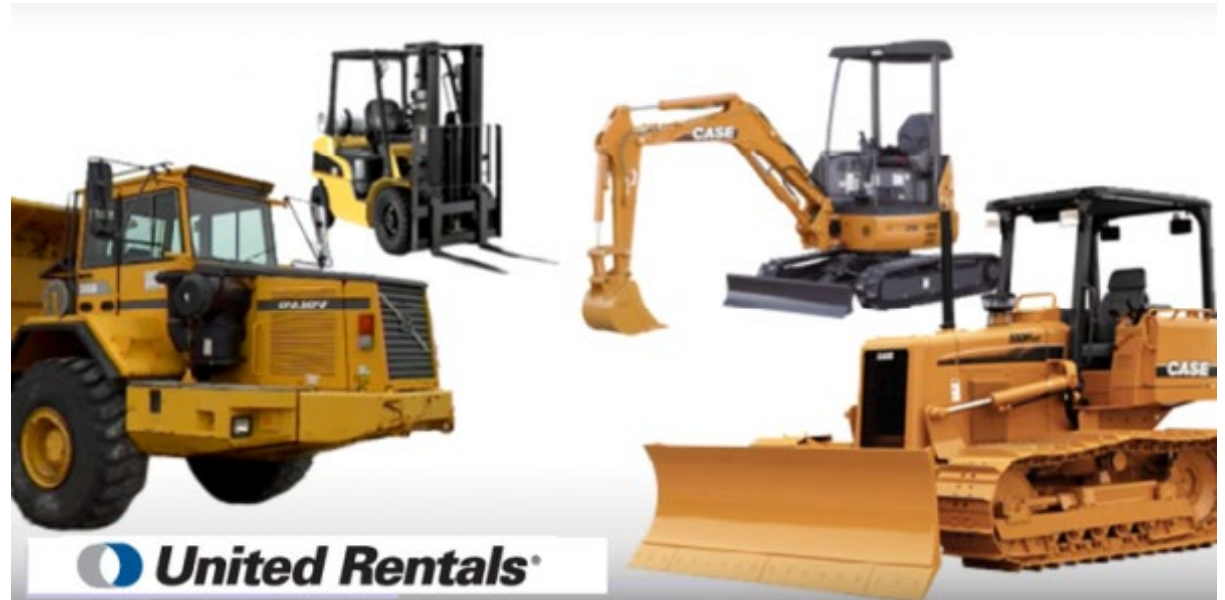
- All materials items are to be NEW and of most current production, unless otherwise specified
- American Made Materials: Buy America Domestic Preference
- The Contractor may NOT add markups for the materials purchased.



# Equipment Rentals

---

- Rentals are allowed
- The Contractor may NOT add markups for rentals.



*Image Credit: [unitedrentals.com](https://www.unitedrentals.com)*

# Terms, Conditions, & Requirements

---

# Contractor Requirements

---

- Licensed in the State of New Mexico, which may include:
  - GB-98: General Building
  - GS-8: Earthmoving, Excavating, Ditching
  - Other license applicable to work
- Experienced Staff
- Occupational Safety and Health Administration (OSHA) Compliant
- **Must be registered with SAM.gov (maintain active status)**
- **Must be registered with New Mexico Department of Workforce Solutions ([www.dws.state.nm.us](http://www.dws.state.nm.us))**

# Employee Wages and Health Coverage

---

- Workers' Compensation: Contractors must comply with federal and state wage laws
  - Federal: Davis Bacon wage rates
  - State: New Mexico Department of Workforce Solutions wage rates
- Wage rates given for each task order
- New Mexico Pay Equity Initiative: Form PE10-249 due yearly for Contractor and Subcontractors; addresses gender pay gap
- Employee Health Coverage required for Contractor's employees (see terms and conditions for details)



# Bonding and Insurance

---

- Bonding: 100% performance bond and a 100% payment and materials bond
  - Due at time a purchase order is created for a task order
- Insurance: General liability, automobile liability, and worker's compensation



# Mileage and Per Diem

---

- Mileage and Per Diem: MMD shall pay such travel expenses as may be incurred in, and that are necessary for, the performance of this Price Agreement at the rates established in the New Mexico Per Diem and Mileage Act, NMSA 1978, Section 10-8-1 et seq., as implemented by the current Department of Finance and Administration (DFA) rule and the current EMNRD Travel Policy. The Contractor's cost to perform the work may include any applicable per diem.



# Forms to Complete

---

- Appendix A – Unit Price Schedule Specifications
- Appendix B – Contractor Experience
- Appendix C – Equipment and Tooling List
- Appendix D – Wage Rates Contractor Certification
- Appendix E – Contractor Licensing and Registration
- Appendix F – Certification of Disbarment
- Appendix G – OSMRE Applicant/Violator System Form



# Thank you!

---

Questions?