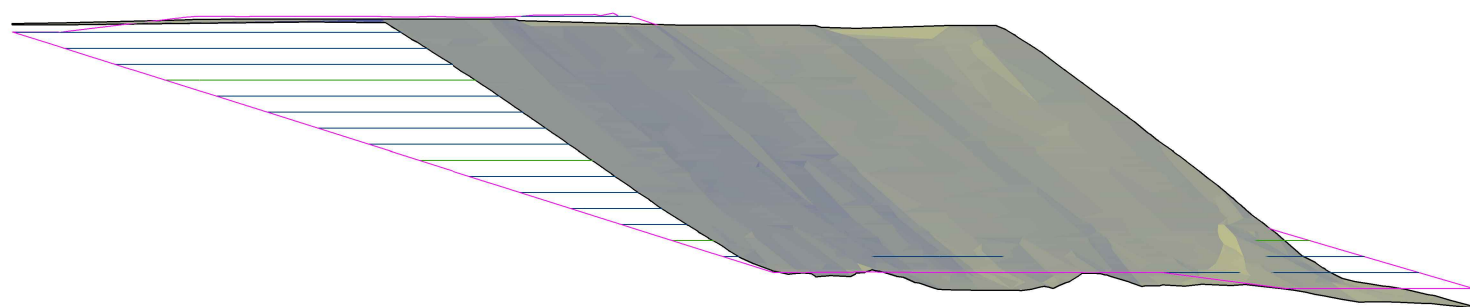


Index of Miscellaneous Earthworks Quantities

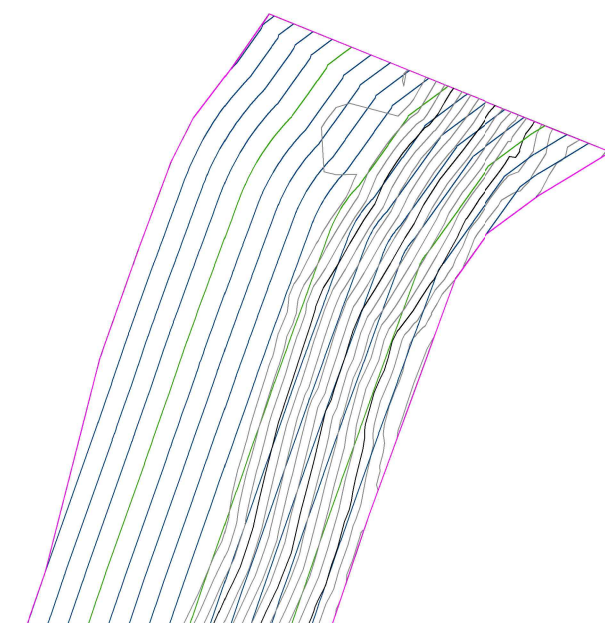
- L1.** Plant area reclamation pullback take-off (between landbridges)
- L2.** Tailings pipeline crossing take-off
- L3.** Access road take-off
- L4.** EWRSP-4 take-off
- L5.** Tailings trench backfill take-off

L1.

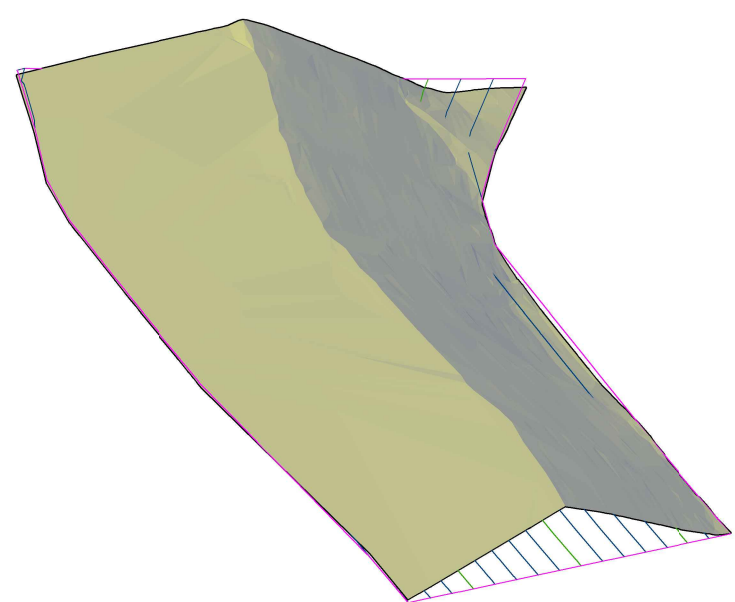
Plant area reclamation pullback take-off (between landbridges)



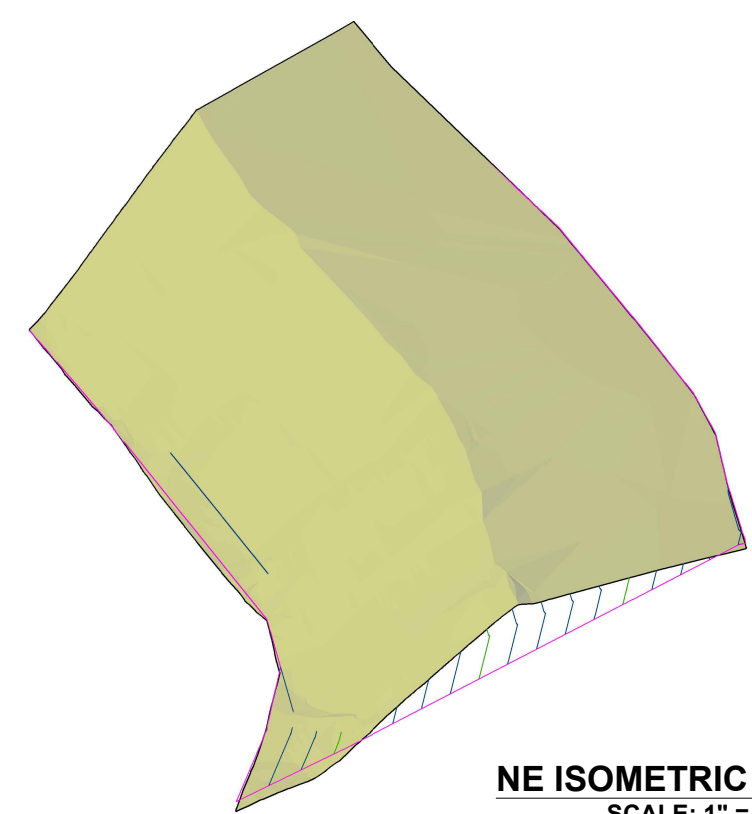
FRONT SECTION
SCALE: 1" = 60'



TOP SECTION
SCALE: 1" = 150'



SW ISOMETRIC SECTION
SCALE: 1" = 100'



NE ISOMETRIC SECTION
SCALE: 1" = 100'

REVISIONS		
REV.	DESCRIPTION	DATE

FILE NAME: Boundary_Grading_RECL_Volume.dwg

DESIGN: CFW
 DRAWN: CFW
 REVIEWED: FT
 APPROVED: FT

IF THE ABOVE BAR DOES NOT MEASURE 1 INCH, THE DRAWING SCALE IS ALTERED

PREPARED BY:



PROJECT:

COPPER FLAT

DRAWING TITLE:		
PLANT AREA RECLAMATION GRADING SECTIONS		
DATE:	REVISION:	DRAWING NO.:
11/18/2018	---	FIGURE 1
SRK PROJECT NO.:		
11/19/2018		

Cut/Fill Report

Generated: 2018-11-15 12:16:38

By user: cwaechter

\\srk.ad\dfs\na\rno\Documents\Copper_Flat\New Mexico Copper Corp\191000.060_Copper Flat Bond\040_Drafting\Task_0004_Drawings and

Drawing: Figures\Working\CFW\20181115_Feliz_Volume\\srk.ad\dfs\na\rno\Documents\Copper_Flat\New Mexico Copper Corp\191000.060_Copper Flat Bond\040_Drafting\Task_0004_Drawings and Figures\Working\CFW\20181115_Feliz_Volume\1531453-0300-C-016.dwg

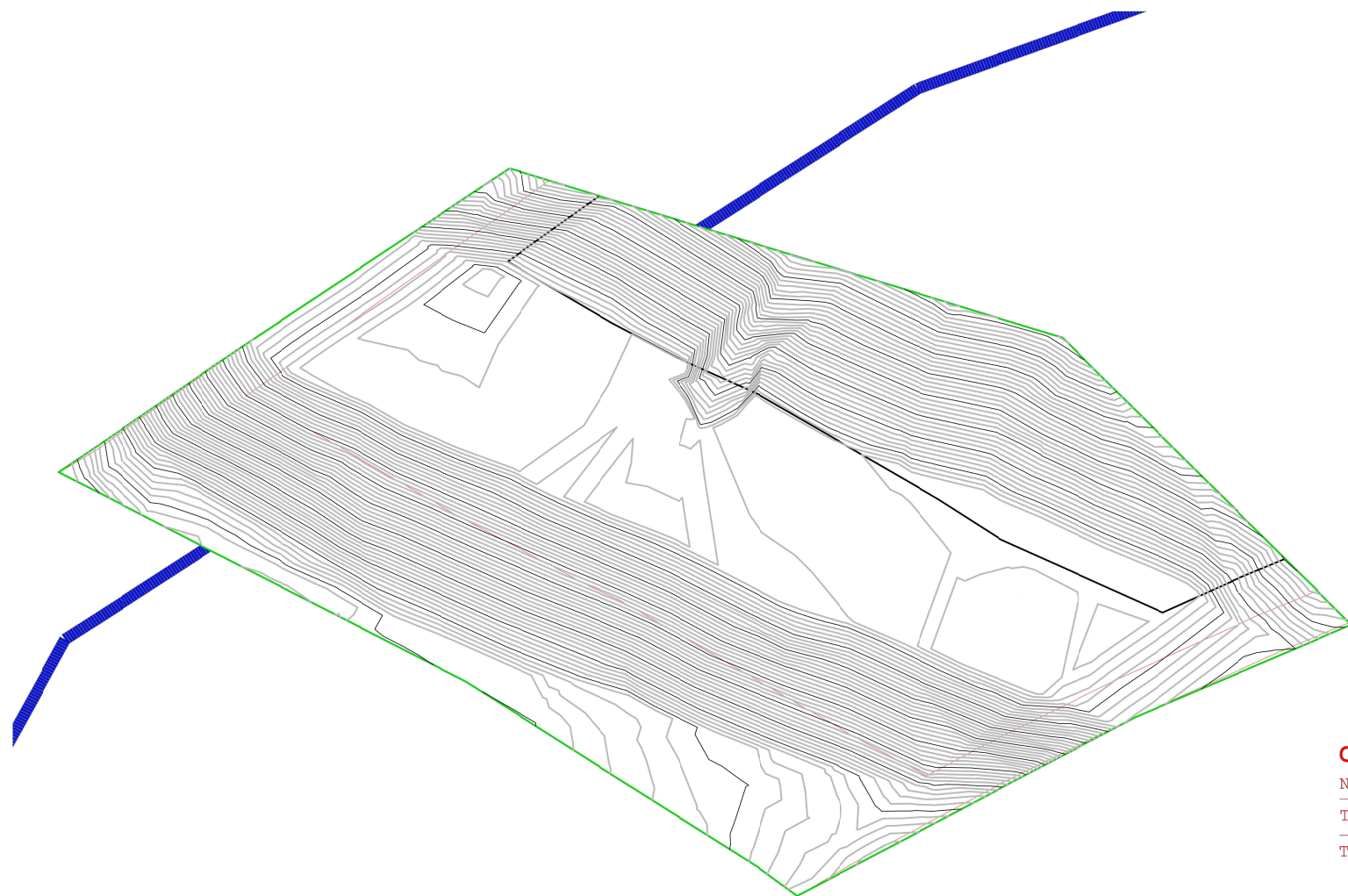
Volume Summary							
Name	Type	Cut Factor	Fill Factor	2d Area (Sq. Ft.)	Cut (Cu. Yd.)	Fill (Cu. Yd.)	Net (Cu. Yd.)
Volume_Boundary_RECL_EG	full	1.000	1.000	160755.94	104304.50	921.62	103382.88<Cut>

Totals				
	2d Area (Sq. Ft.)	Cut (Cu. Yd.)	Fill (Cu. Yd.)	Net (Cu. Yd.)
Total	160755.94	104304.50	921.62	103382.88<Cut>

* Value adjusted by cut or fill factor other than 1.0

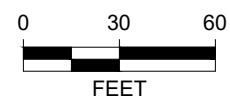
L2.

Tailings pipeline crossing take-off



Cut/Fill Summary

Name	Cut Factor	Fill Factor	2d Area	Cut	Fill	Net
Tailings Pipeline	1.000	1.000	62098.99 Sq. Ft.	73521.85 Cu. Yd.	64.83 Cu. Yd.	73457.02 Cu. Yd.<Cut>
Totals			62098.99 Sq. Ft.	73521.85 Cu. Yd.	64.83 Cu. Yd.	73457.02 Cu. Yd.<Cut>



REVISIONS		
REV.	DESCRIPTION	DATE

DESIGN: XXX
 DRAWN: XXX
 REVIEWED: XXX
 APPROVED: XXX

IF THE ABOVE BAR DOES NOT MEASURE 1 INCH, THE DRAWING SCALE IS ALTERED

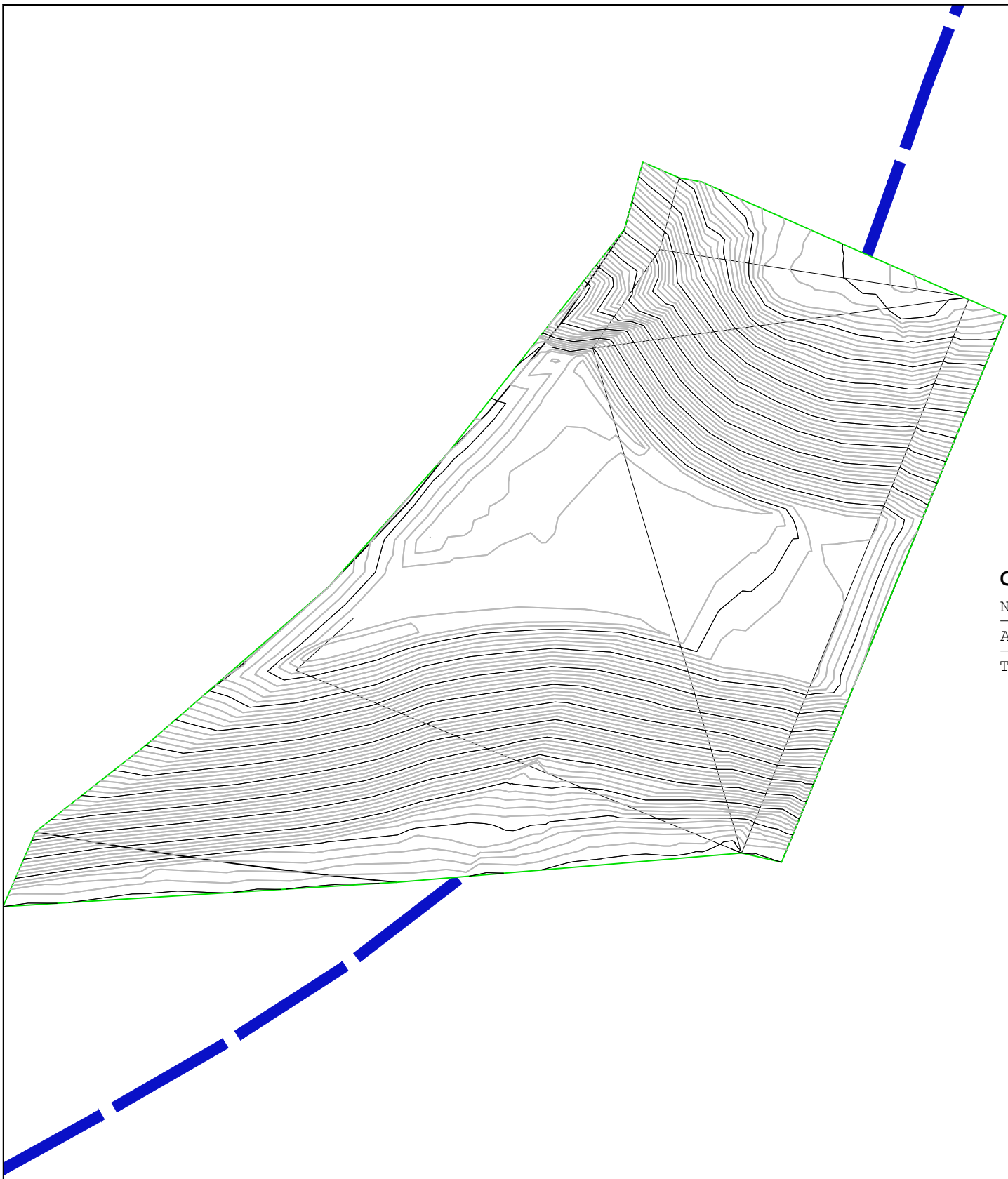
PREPARED BY: 

PROJECT: **COPPER FLAT**

DRAWING TITLE: TAILINGS PIPELINE CROSSING VOLUME SECTION		
DATE: 12/05/2018	REVISION: ---	DRAWING NO.: FIGURE 2
SRK PROJECT NO.: 191000.060		

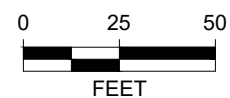
L3.

Access road take-off



Cut/Fill Summary

Name	Cut Factor	Fill Factor	2d Area	Cut	Fill	Net
Access Road	1.000	1.000	50787.19 Sq. Ft.	57714.36 Cu. Yd.	12.07 Cu. Yd.	57702.29 Cu. Yd.<Cut>
Totals			50787.19 Sq. Ft.	57714.36 Cu. Yd.	12.07 Cu. Yd.	57702.29 Cu. Yd.<Cut>



REVISIONS		
REV.	DESCRIPTION	DATE

DESIGN: FT
DRAWN: DCA
REVIEWED: XXX
APPROVED: XXX
IF THE ABOVE BAR DOES NOT MEASURE 1 INCH, THE DRAWING SCALE IS ALTERED

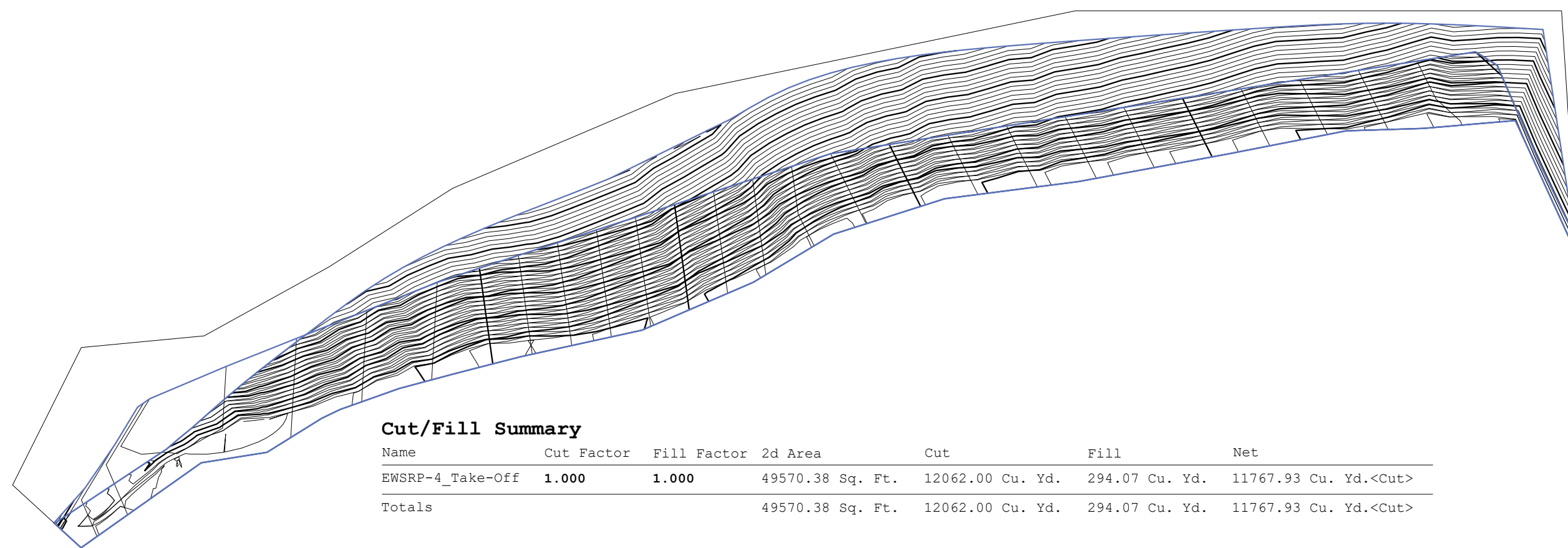
PREPARED BY: 

PROJECT: **COPPER FLAT**

DRAWING TITLE: ACCESS ROAD VOLUME SECTION		
DATE: 12/05/2018	REVISION: ---	DRAWING NO.: FIGURE 3
SRK PROJECT NO.: 191000.060		

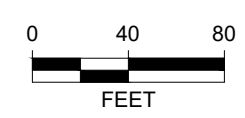
L4.

EWRSP-4 take-off



Cut/Fill Summary

Name	Cut Factor	Fill Factor	2d Area	Cut	Fill	Net
EWSRP-4_Take-Off	1.000	1.000	49570.38 Sq. Ft.	12062.00 Cu. Yd.	294.07 Cu. Yd.	11767.93 Cu. Yd.<Cut>
Totals			49570.38 Sq. Ft.	12062.00 Cu. Yd.	294.07 Cu. Yd.	11767.93 Cu. Yd.<Cut>



REVISIONS		
REV.	DESCRIPTION	DATE

DESIGN: XXX
 DRAWN: XXX
 REVIEWED: XXX
 APPROVED: XXX

IF THE ABOVE BAR DOES NOT MEASURE 1 INCH, THE DRAWING SCALE IS ALTERED

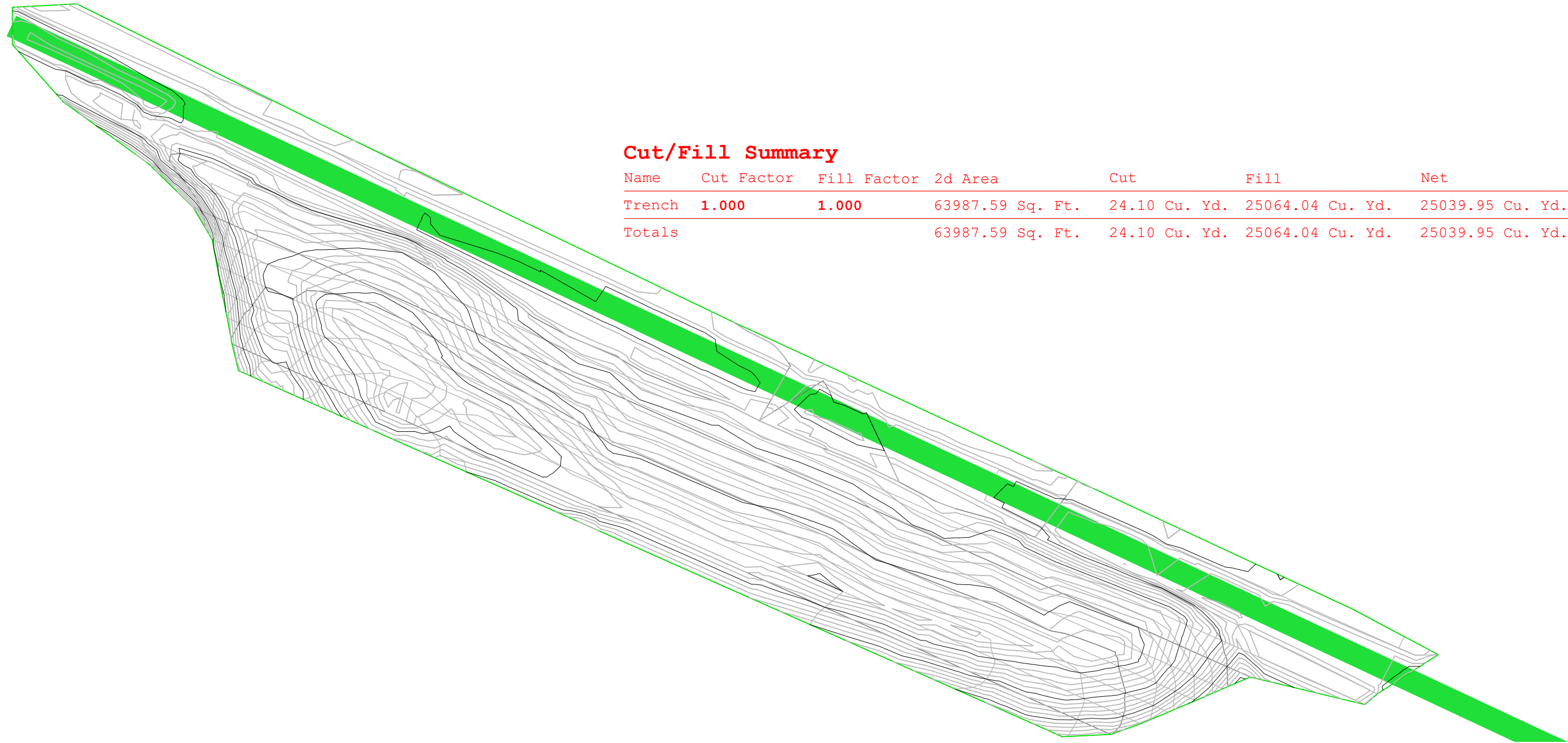
PREPARED BY: 

PROJECT: **COPPER FLAT**

DRAWING TITLE: ACCESS ROAD VOLUME SECTION		
DATE: 12/05/2018	REVISION: ---	DRAWING NO.: FIGURE 4
SRK PROJECT NO.: 191000.160		

L5.

Tailings trench backfill take-off



Cut/Fill Summary

Name	Cut Factor	Fill Factor	2d Area	Cut	Fill	Net
Trench	1.000	1.000	63987.59 Sq. Ft.	24.10 Cu. Yd.	25064.04 Cu. Yd.	25039.95 Cu. Yd.<Fill>
Totals			63987.59 Sq. Ft.	24.10 Cu. Yd.	25064.04 Cu. Yd.	25039.95 Cu. Yd.<Fill>