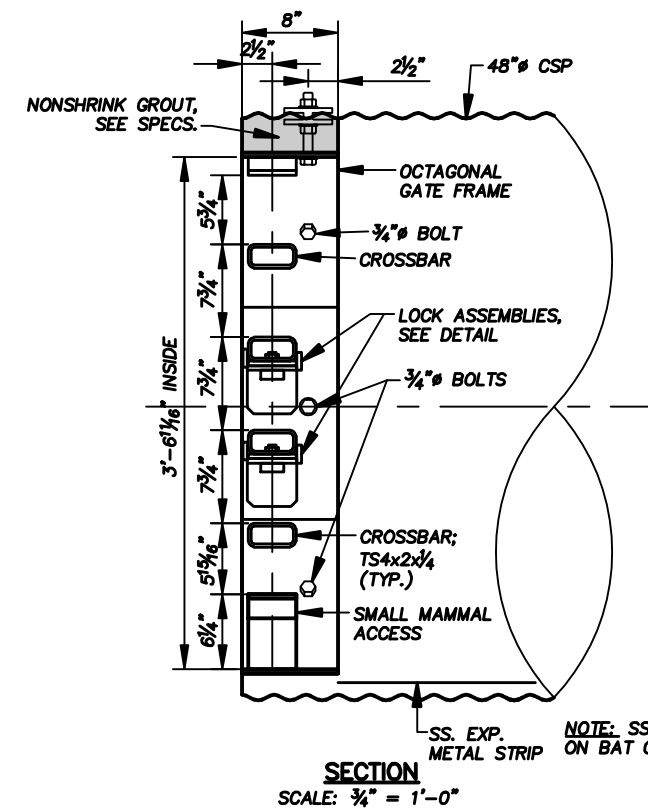
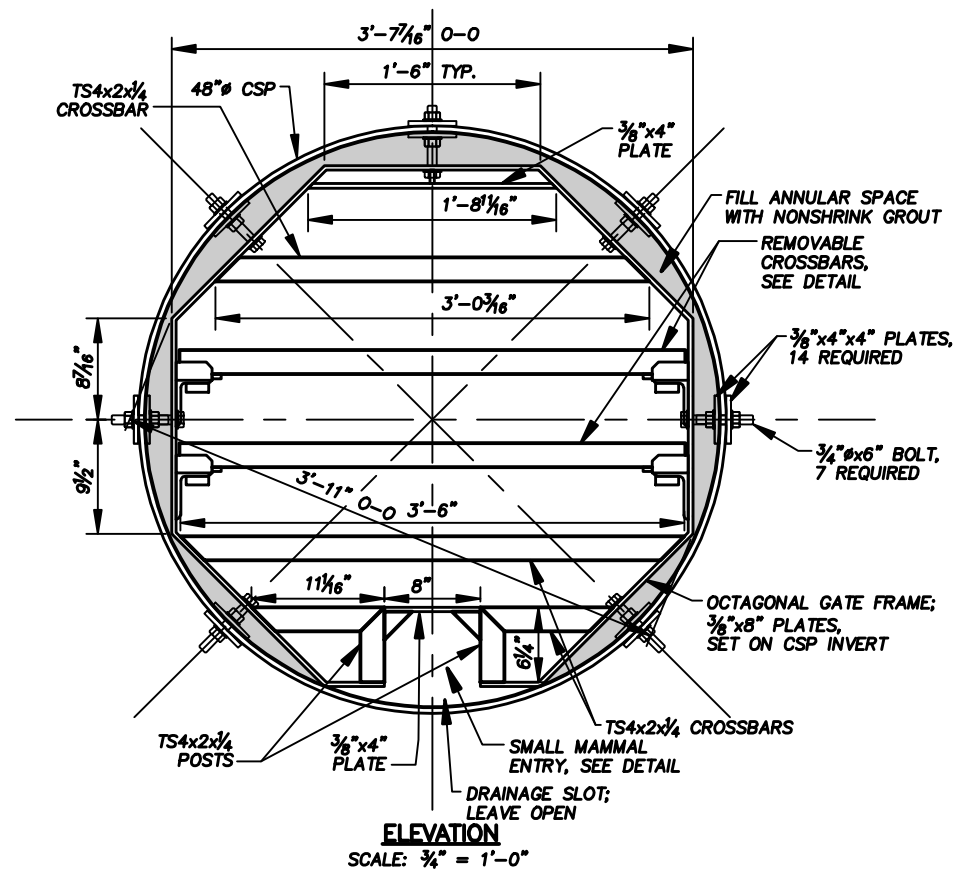
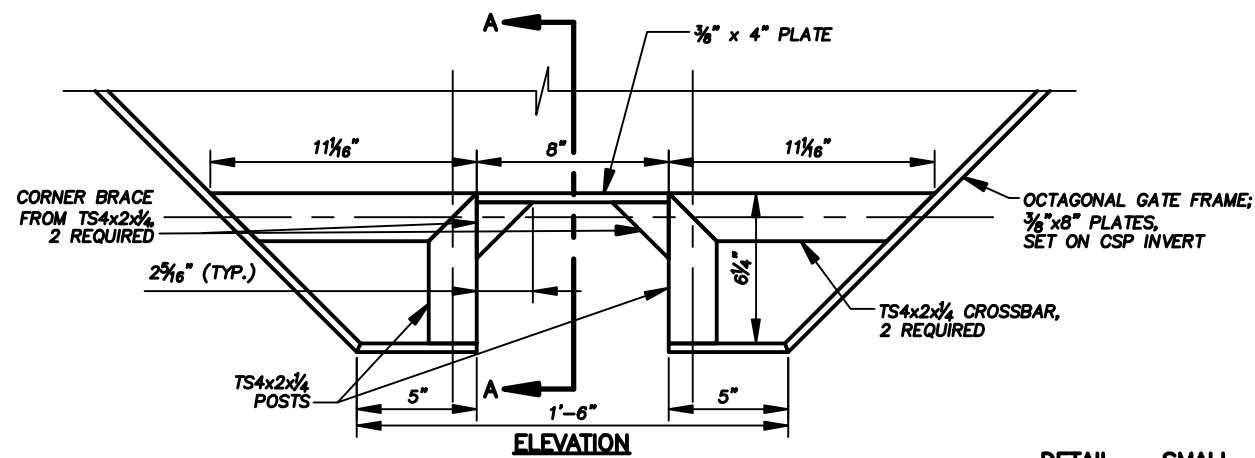


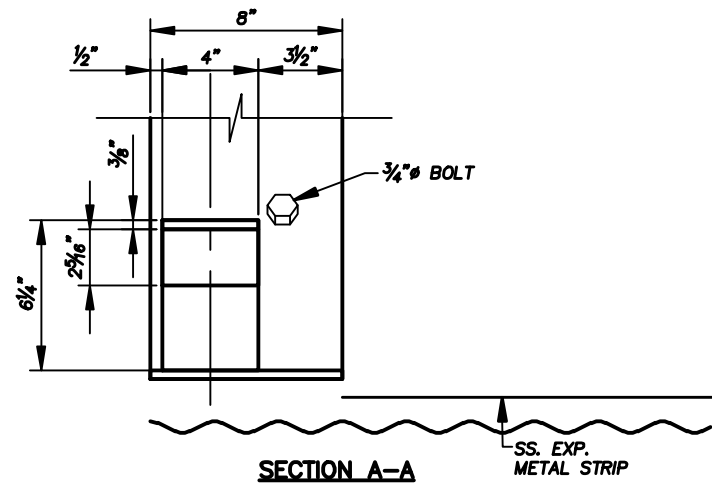
BAT GATE DETAIL AT 48-INCH DIAMETER CSP.DWG PLOT SCALE 1 = 24



NOTE: SS. EXP. METAL STRIP NOT NEEDED ON BAT GATE AT FEATURE 045-026 ADIT



**DETAIL - SMALL MAMMAL ENTRY**  
SCALE: 1 1/2" = 1'-0"



**GENERAL NOTES:**

1. STEEL PLATES AND SHAPES SHALL BE WEATHERING STEEL. WELD ALL JOINTS. CONSTRUCT THE BAT GATE TO ELIMINATE SURFACES ON WHICH MOISTURE OR DEBRIS CAN BE TRAPPED. ALL TUBULAR MEMBERS SHALL BE HERMETICALLY SEALED TO PREVENT THE INCURSION OF MOISTURE, EXCEPT AS OTHERWISE NOTED. ROUND OR CHAMFER ALL EXPOSED SHARP CORNERS AND EDGES.
2. DESTROY EXPOSED THREADS ON ALL BOLTS.

**ABANDONED MINE LAND PROGRAM**  
**MINING AND MINERALS DIVISION**  
ENERGY, MINERALS AND NATURAL RESOURCES DEPARTMENT

SCALE: AS SHOWN	045-026T, 045-132S,	DRAWN BY: JAK/JRS
DATE: OCT. 12, 2006	047-016T, & 047-038S	REVISED:

**BAT GATE DETAIL AT 48-INCH DIAMETER CSP**

LAKE VALLEY MINE SAFEGUARD PROJECT - PHASE II **FIGURE 36**