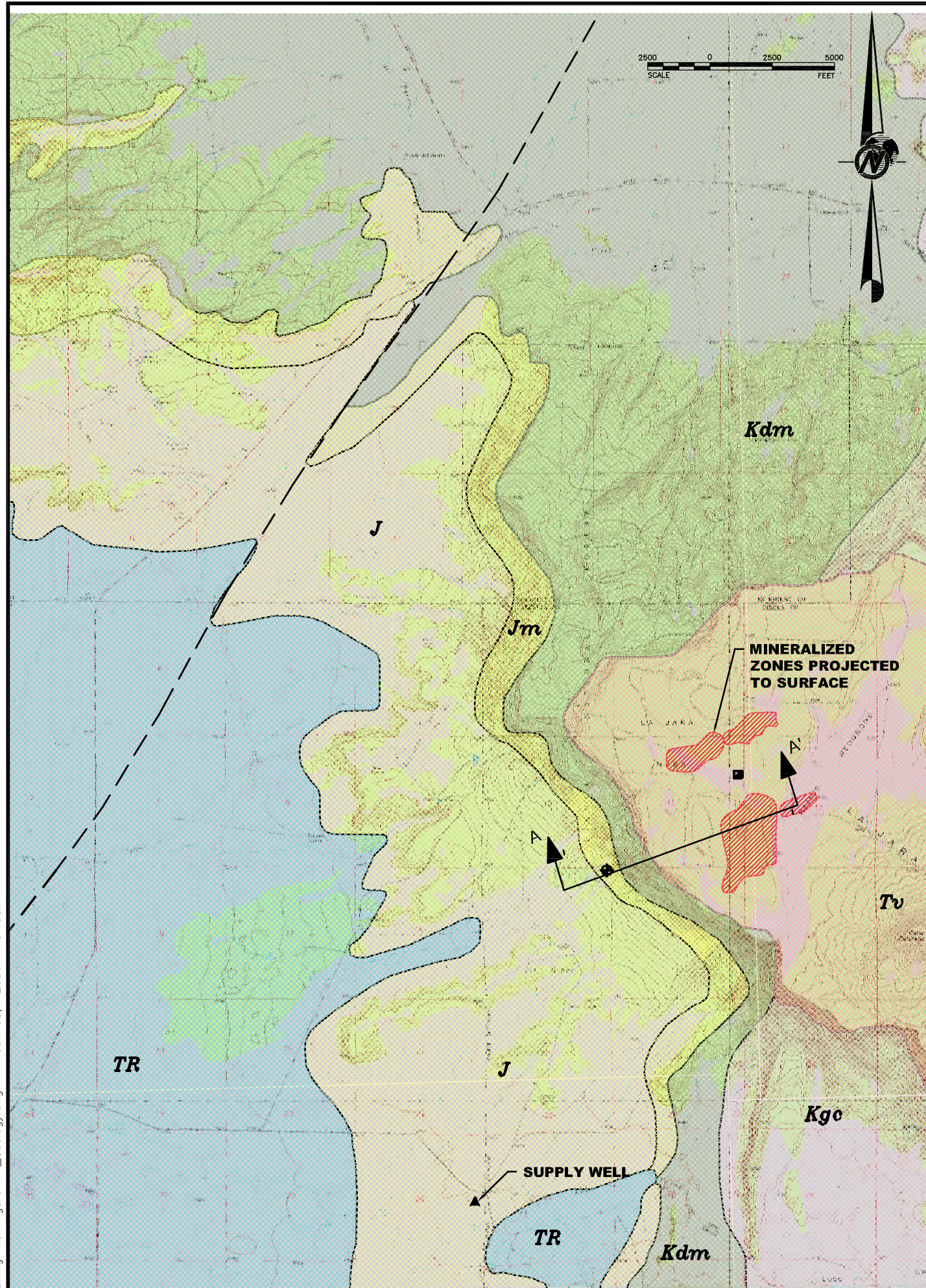
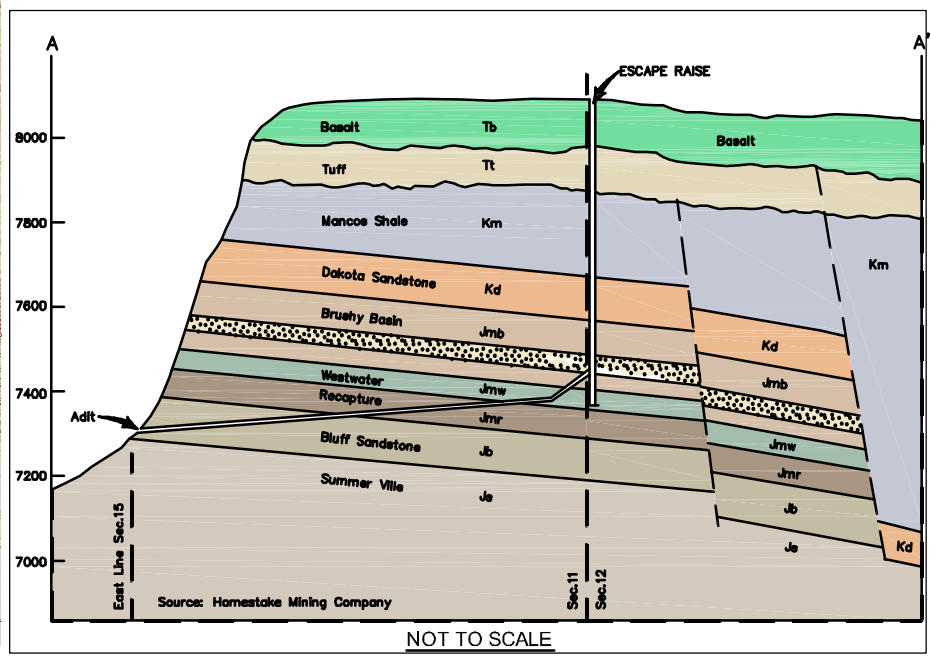


Drawing file: Figure7-1_Geology.dwg Jun 08, 2009 8:15am



| MAP UNITS | AGE | FORMATION | MEMBER | LITHOLOGY | THICKNESS | DESCRIPTION |
|------------|------------|----------------------------|--|-----------|----------------|---|
| Tv | TERTIARY | MT. TAYLOR VOLCANIC (Tv) | EXTRUSIVE FLOW | | 85-110 FEET | Black Basalt |
| Kgc | CRETACEOUS | MESA VERDE GROUP | EXTRUSIVE FLOW | | 190-230 FEET | Pumice fragments, abundant quartz phenocrysts cemented with fine light colored ash. |
| Kdm | CRETACEOUS | MANCOS SHALE Km | | | 150-200 FEET | Black marine shale |
| | | DAKOTA SANDTONE (Kd) | | | 40-90 FEET | Lt. brown, coarse to medium grained sandstone, limited black shale partings |
| Jm | JURASSIC | MORRISON FORMATION (Jm) | BRUSHY BASIN (Jmb) POSION CANYON (Jmbp) | | 100-180 FEET | Green shale with interbeds sandy shale |
| | | | WESTWATER CANYON (Jmw) SAND | | 30-85 FEET | Lt. Brown to grayish-brown, fine to very coarse-grained arkosic to sub arkosic sandstone, interbeds of grayish green mudstone, up to five sand units. |
| | | | RECAPTURE SHALE (Jmr) SHALE | | 80-100 FEET | Lt. gray to bleached, medium to coarse grained sandstone. |
| J | | | | | 50 FEET | grayish red and gray |
| | | BLUFF SANDSTONE (Jb) | | | 235 370 FEET | pale-red to a pale brown, fine to medium-grained eolian sandstone |
| | | SUMMERVILLE FORMATION (Js) | | | 160-270 FEET | Interbedded verigated mudstone siltstone to very fine grained sandstone |
| | | TODILTO LIMESTONE (Jt) | | | 25-35 FEET | Pale olive gray, dark gray and pale yellow, thck bedded limestone |
| | | ENTRADA SANDSTONE (Je) | | | 150-185 FEET | Medium brown to reddish eolian Sandstone |
| TR | TRIASSIC | CHINLE GROUP (Tc) | | | 1000-1600 FEET | Grayish to pale reddish mudstone, siltstone and fine grained sandstone |
| | PERMIAN | SAN ANDRES LIMESTONE | | | 95-115 FEET | Dense gray and yellowish brown to red limestone with interbedded yellow, fine to medium grained, crossbedded sandstone, upper surface karst. |

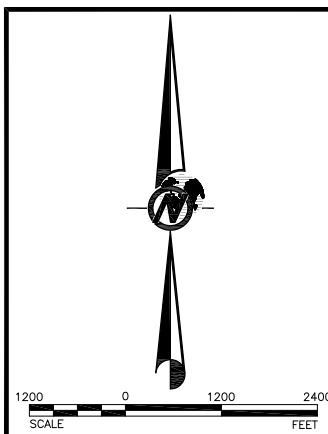
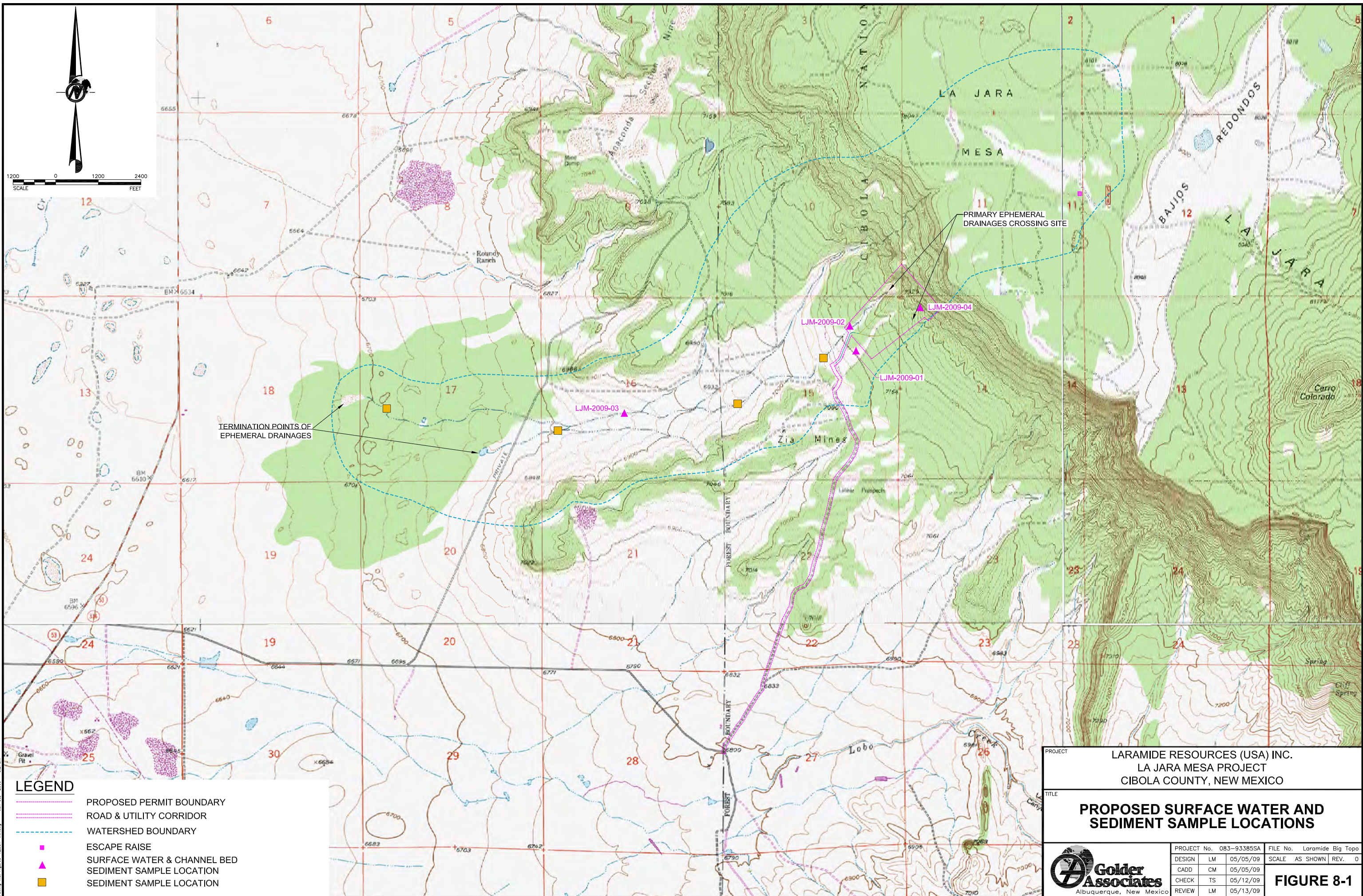


- LEGEND**
- MINERALIZED ZONE
 - FAULT
 - LA JARA MESA PROJECT
 - PORTAL FACILITY AREA
 - SUPPLY WELL
 - ESCAPE RAISE

SOURCE: LARAMIDE RESOURCES (USA) INC.
 PROJECT LARAMIDE RESOURCES (USA) INC.
 LA JARA MESA PROJECT
 CIBOLA COUNTY, NEW MEXICO

GENERALIZED SITE GEOLOGY

| | | | | | |
|---|-------------|--------------|----------|-------------------|--|
| <p>Golder Associates Albuquerque, New Mexico</p> | PROJECT No. | 08.393385-SA | FILE No. | Figure7-1_Geology | |
| | DESIGN | LM | 04/30/09 | SCALE AS SHOWN | |
| | CADD | CM | 04/30/09 | REV. 0 | |
| | CHECK | LM | 04/30/09 | FIGURE 7-1 | |
| | REVIEW | BN | 05/30/09 | | |



TERMINATION POINTS OF EPHEMERAL DRAINAGES

PRIMARY EPHEMERAL DRAINAGES CROSSING SITE

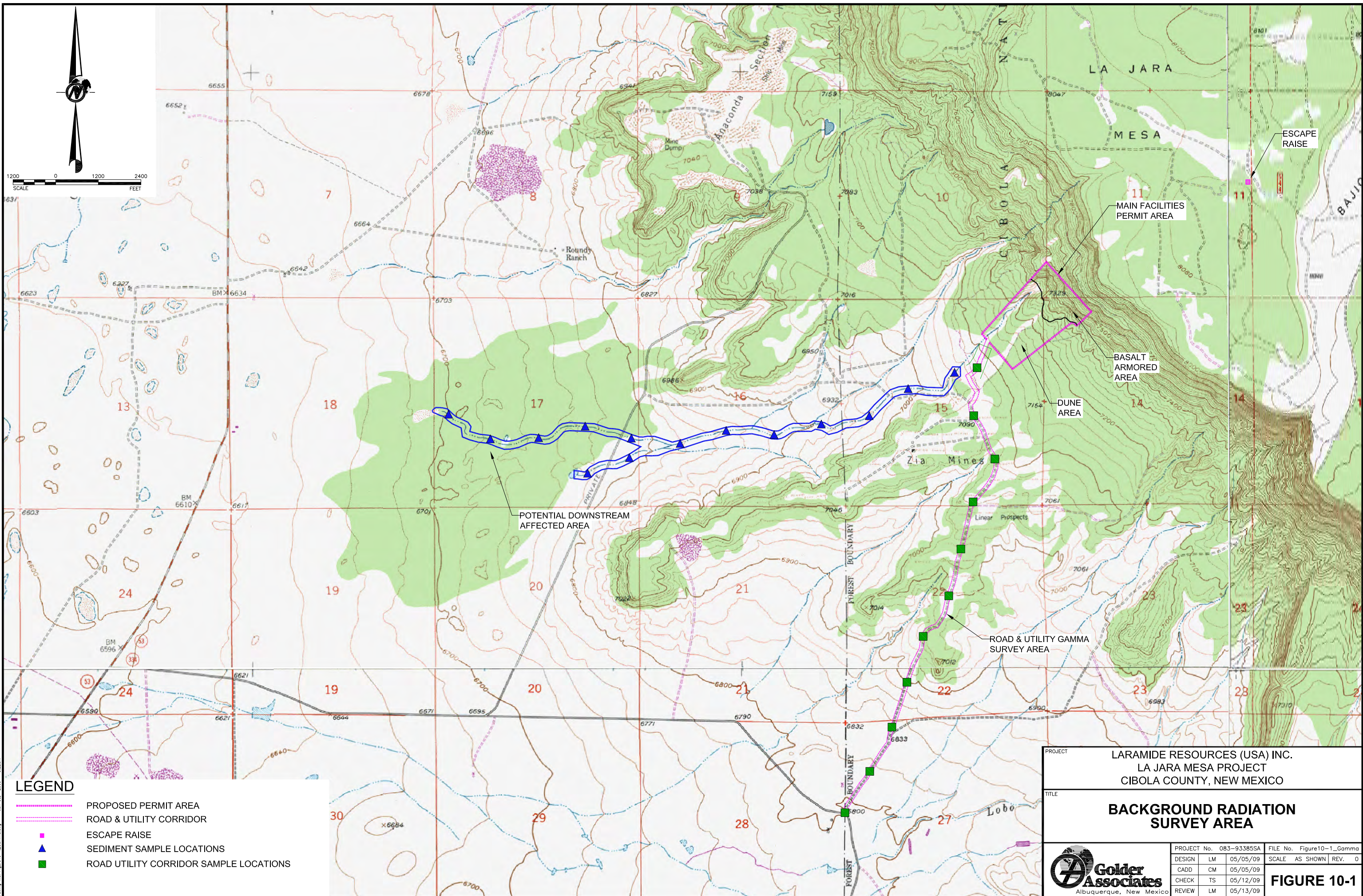
- LEGEND**
- PROPOSED PERMIT BOUNDARY
 - ROAD & UTILITY CORRIDOR
 - WATERSHED BOUNDARY
 - ESCAPE RAISE
 - ▲ SURFACE WATER & CHANNEL BED SEDIMENT SAMPLE LOCATION
 - SEDIMENT SAMPLE LOCATION

PROJECT LARAMIDE RESOURCES (USA) INC.
 LA JARA MESA PROJECT
 CIBOLA COUNTY, NEW MEXICO

PROPOSED SURFACE WATER AND SEDIMENT SAMPLE LOCATIONS

| | | |
|---|-------------------------|----------------------------|
| <p>Golder Associates Albuquerque, New Mexico</p> | PROJECT No. 083-93385SA | FILE No. Laramide Big Topo |
| | DESIGN LM 05/05/09 | SCALE AS SHOWN REV. 0 |
| | CADD CM 05/05/09 | |
| | CHECK TS 05/12/09 | |
| REVIEW LM 05/13/09 | FIGURE 8-1 | |

Drawing file: Figure8-1_Surf-Wtr.dwg Jun 08, 2009 8:21am



LEGEND

| | |
|--|--|
| | PROPOSED PERMIT AREA |
| | ROAD & UTILITY CORRIDOR |
| | ESCAPE RAISE |
| | SEDIMENT SAMPLE LOCATIONS |
| | ROAD UTILITY CORRIDOR SAMPLE LOCATIONS |

| | | | | | |
|--|--|-------------|--------------------|------------------|----------|
| PROJECT | LARAMIDE RESOURCES (USA) INC. LA JARA MESA PROJECT CIBOLA COUNTY, NEW MEXICO | | | | |
| TITLE | BACKGROUND RADIATION SURVEY AREA | | | | |
| Golder Associates Albuquerque, New Mexico | PROJECT No. | 083-93385SA | FILE No. | Figure10-1_Gamma | |
| | DESIGN | LM | 05/05/09 | SCALE | AS SHOWN |
| | CADD | CM | 05/05/09 | REV. | 0 |
| | CHECK | TS | 05/12/09 | | |
| REVIEW | LM | 05/13/09 | FIGURE 10-1 | | |

Drawing file: Figure10-1_Gamma.dwg Jun 08, 2009 8:22am