



Before - A view of the extent of the cart path.

## PURPOSE

- Manage runoff
- Recreational amenity
- Historical interpretation

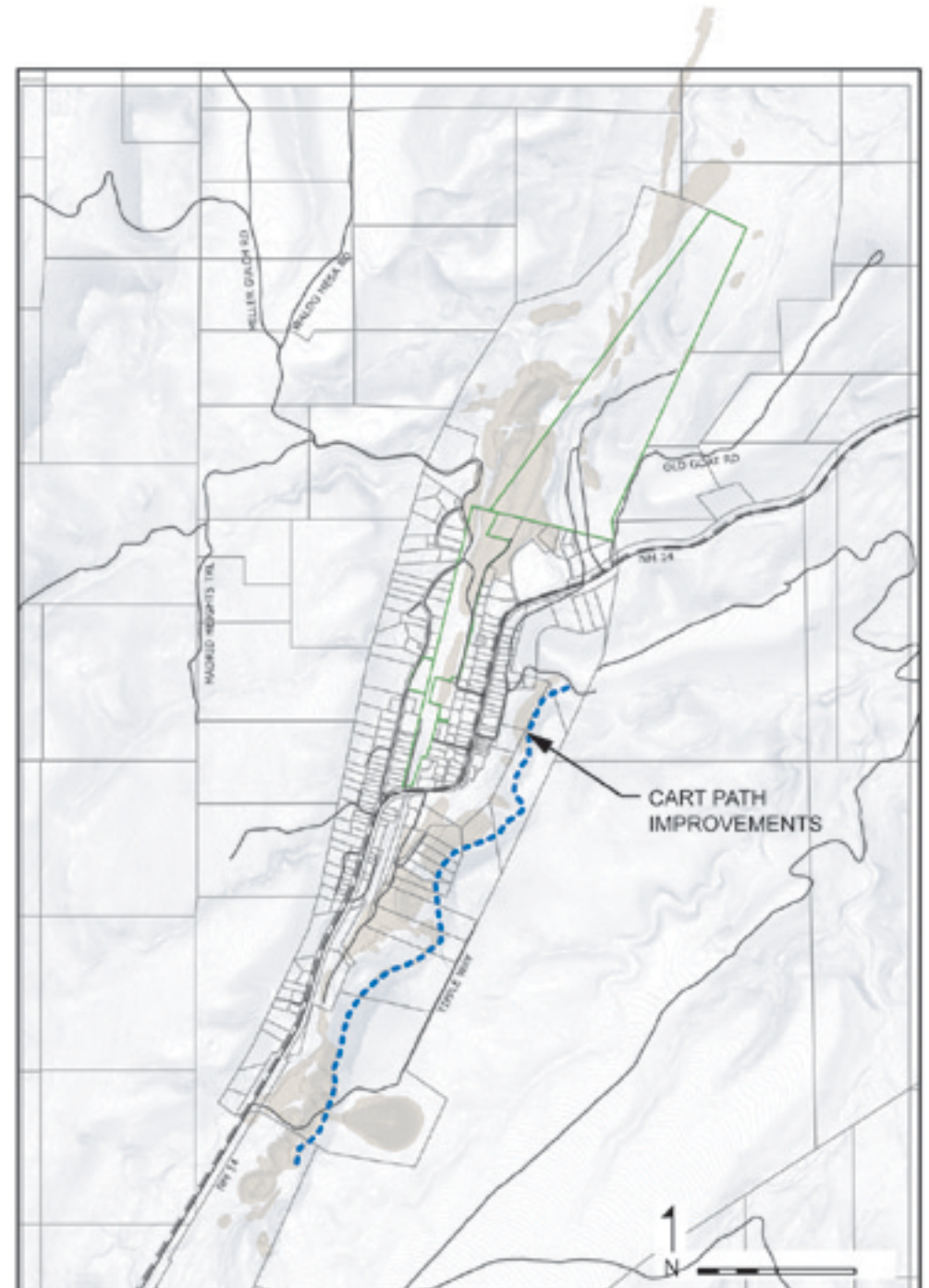
After - Improvements to the trail include removing some vegetation and using grey aggregate base course to stabilize the trail.



Before - This level area is the location of a former mining adit. The cart path is widest at this point.



**After** - Improvements to the trail include removing excess vegetation and using 'red dog' for trail stabilization. Interpretive signage could be added at appropriate locations.



## CART PATH IMPROVEMENTS

Madrid's Mining Landscape / Madrid, NM  
Community Meeting #2 07.28.2010

