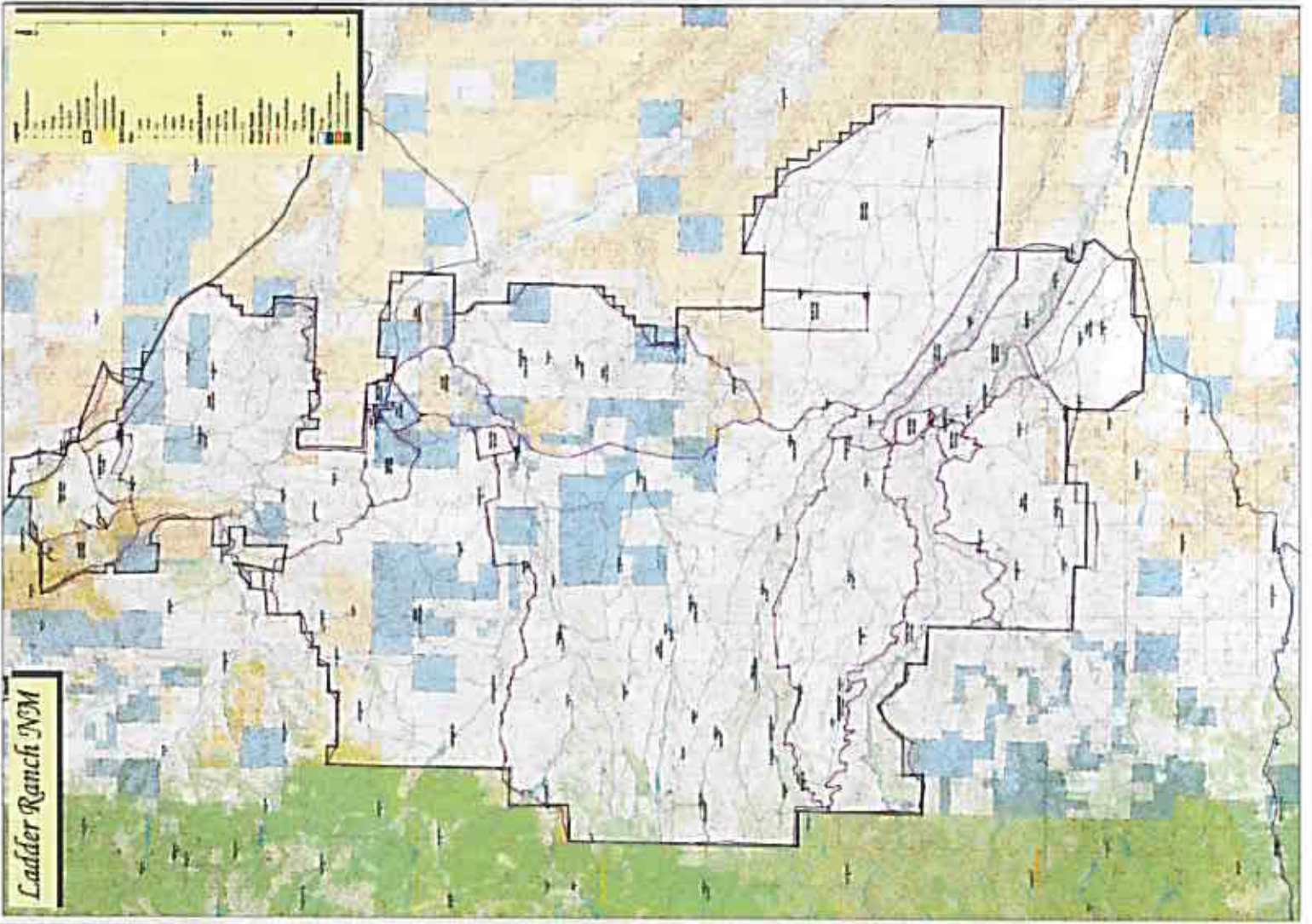


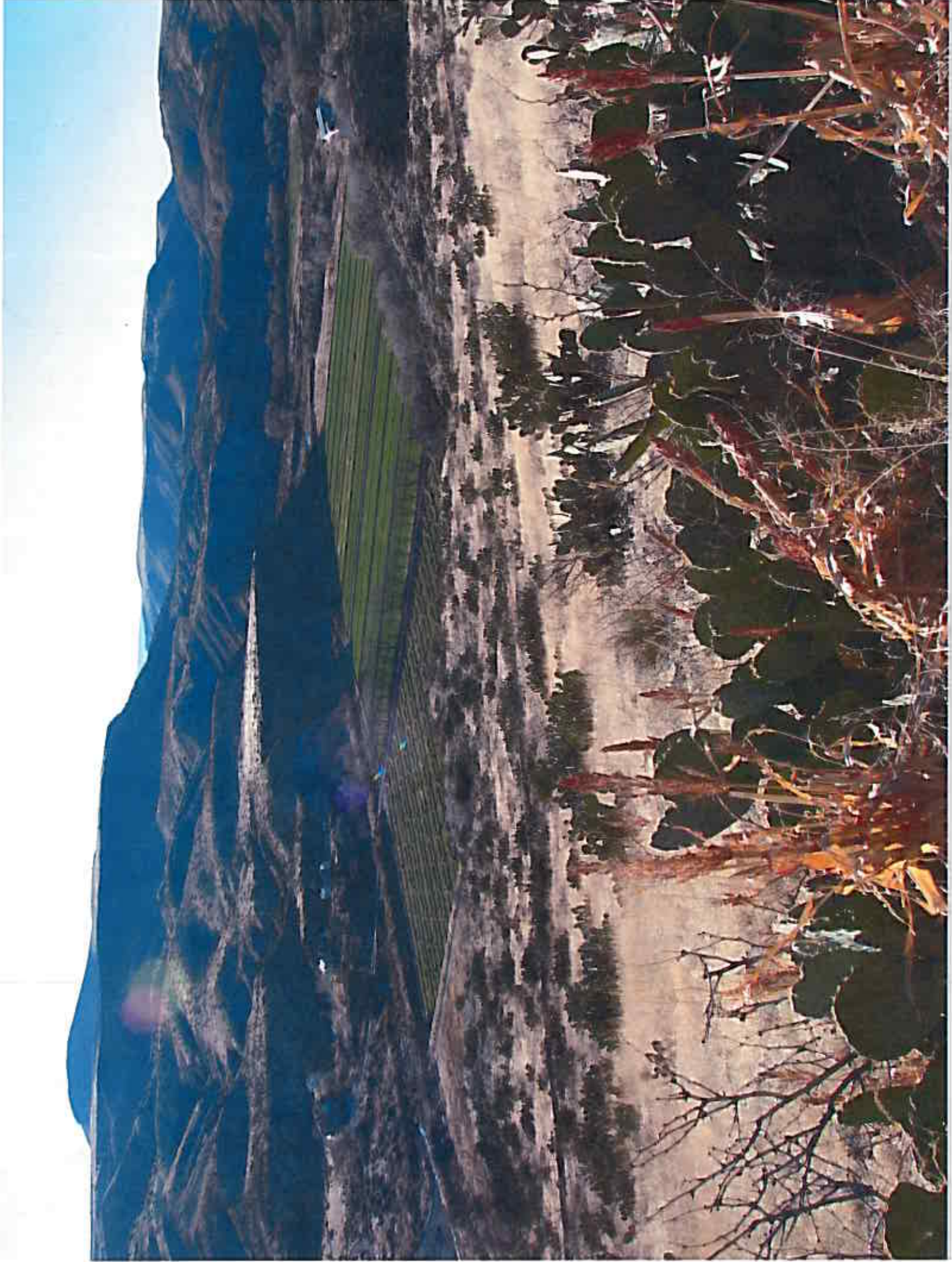
RANCHES
EXHIBIT
1

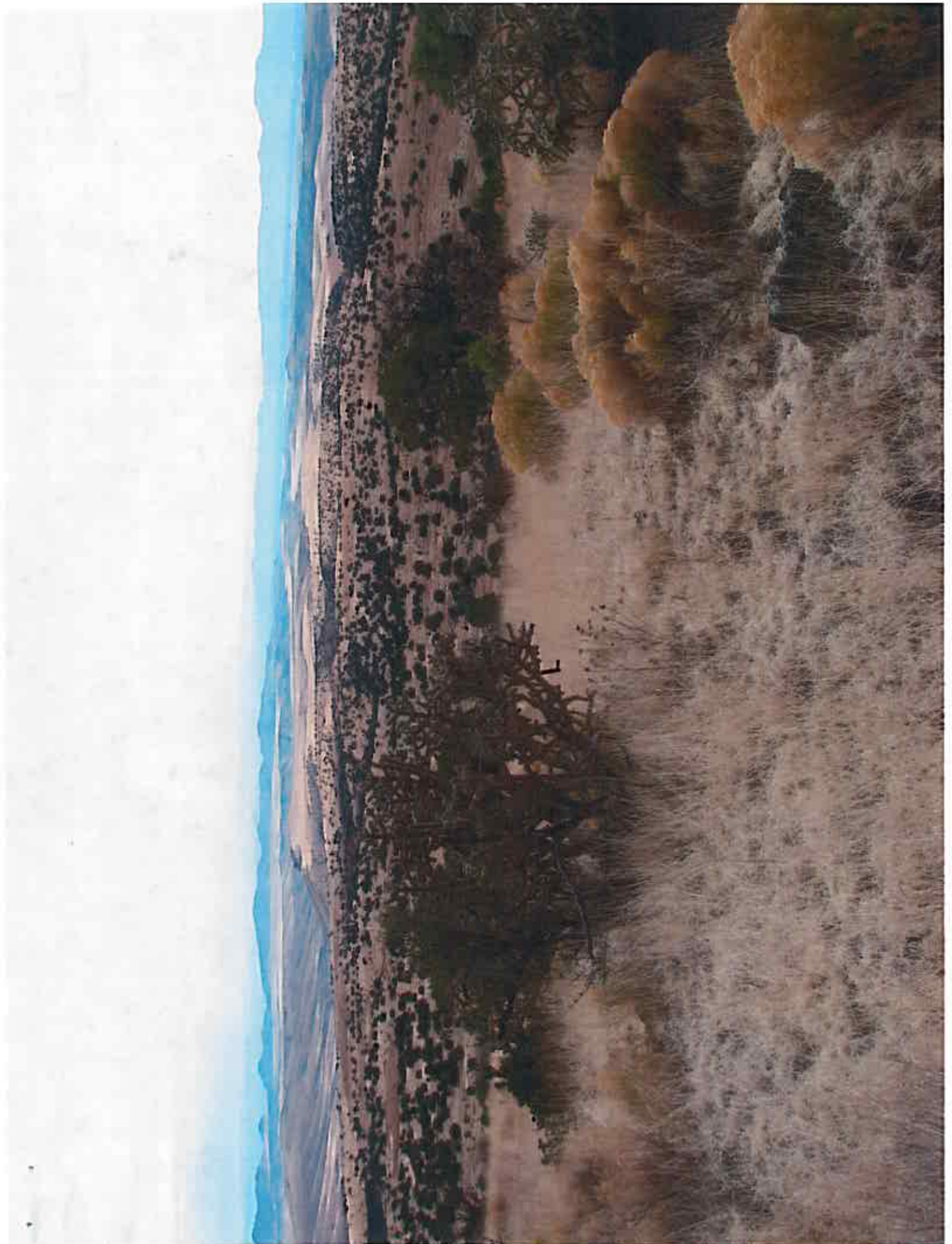
Ladder Ranch Mission

“To manage Turner Lands in an economically sustainable and ecologically sensitive manner while promoting the conservation of native species and habitats”.





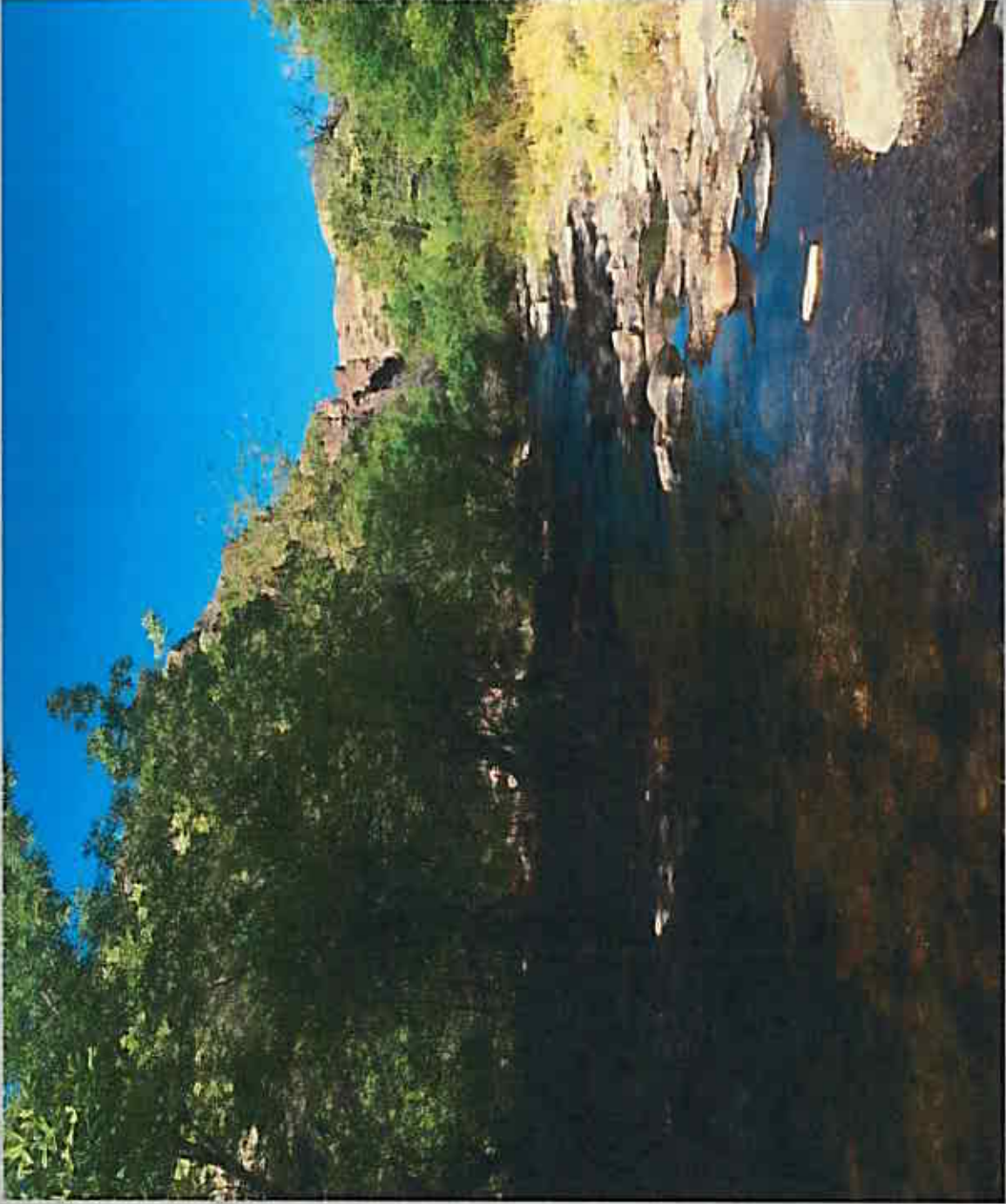




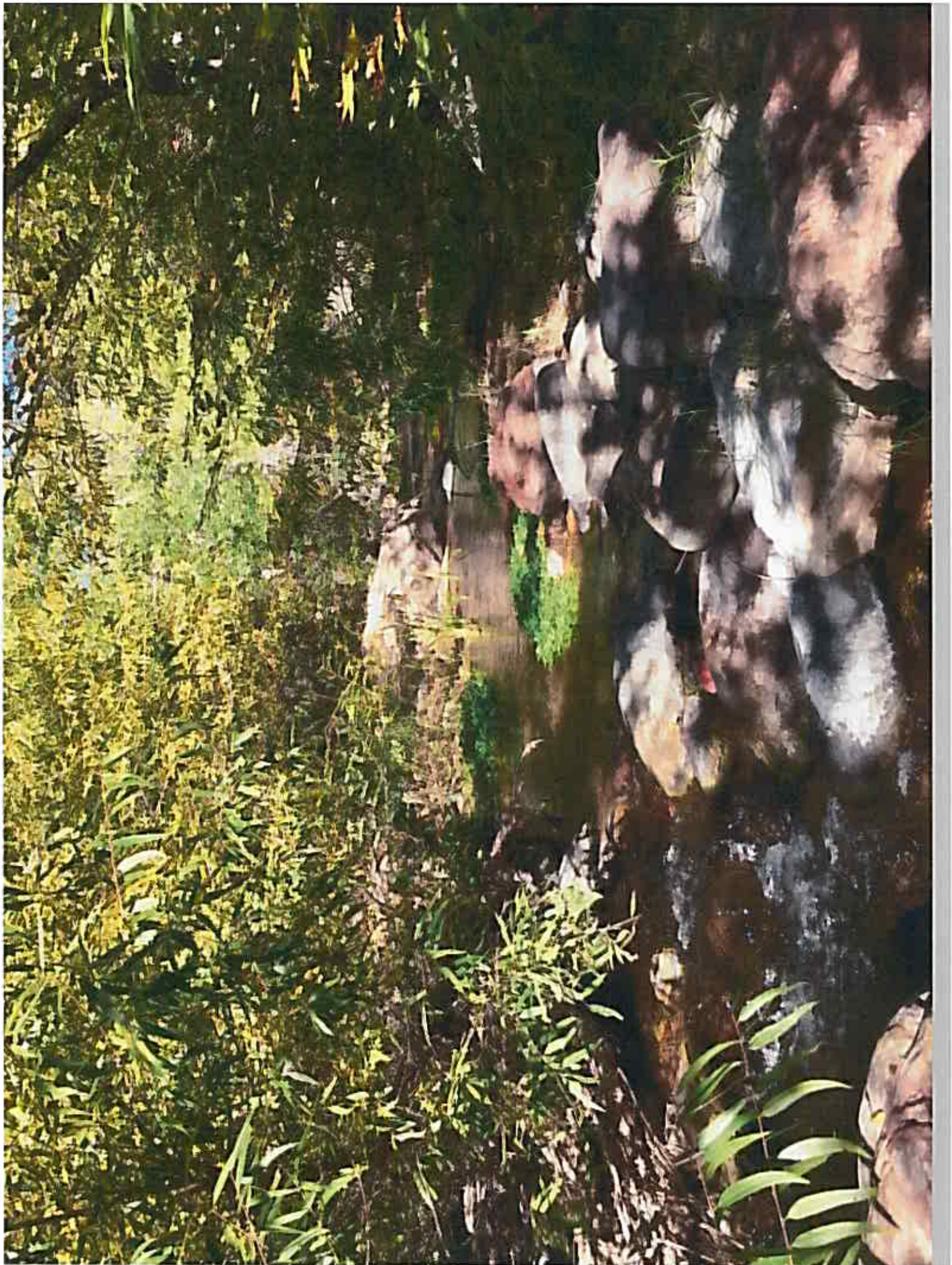


















NEW MEXICO'S MASSIVE OUTDOOR LABORATORY

ORGANATING HIGH in New Mexico's mysterious Black Range and flowing to the Rio Grande amid contorted, ghost-like sycamores, Las Animas Creek remains one of the least accessible landscapes in the nation. The watershed is best known as the site of Apache chief Victorio's last major battle with the U.S. Cavalry before his retreat and ultimate defeat by the Mexican army. Despite its geographic isolation, the watershed remains closely linked with the history of nearby Kingston, Hillborn and Caballo. Once home to New Mexico's last grizzly, Las Animas sustains a diverse range of native plant and wild animals, including bison, prairie dogs and mountain lions, as well as a host of endangered species. Albo Leopold Wilderness and Ted Turner's Lachler Ranch ensure it remains El Rio de las Animas, the "River of Spirits." Wildlife research biologist Harley G. Shaw compiles a human and natural history of this remote ecosystem.



The History Press

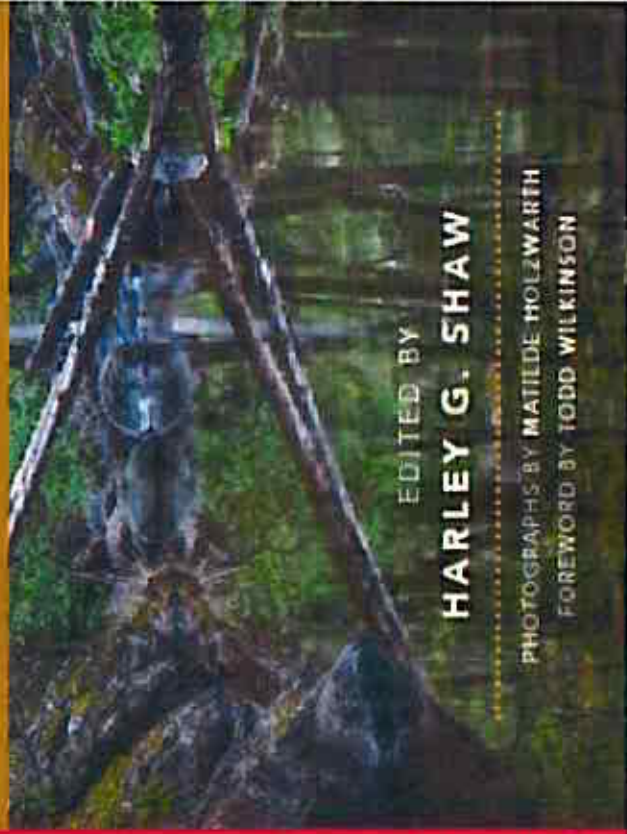
EL RÍO DE LAS ANIMAS
LAS ANIMAS, NEW MEXICO

RIVER of SPIRITS

SHAW H

RIVER of SPIRITS

A NATURAL HISTORY OF
NEW MEXICO'S LAS ANIMAS CREEK



EDITED BY
HARLEY G. SHAW

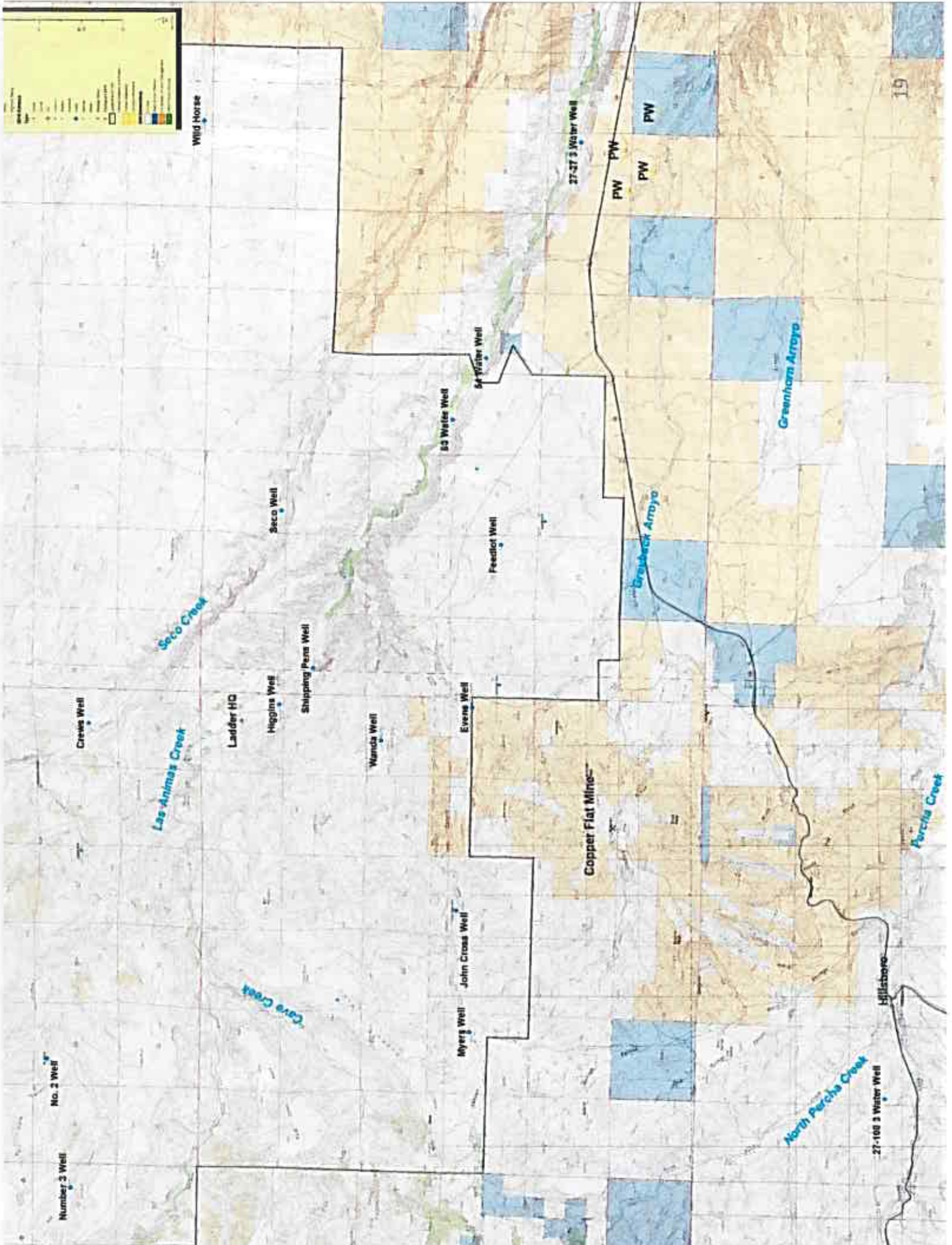
PHOTOGRAPHS BY MATILDE HOLZWARTH
FOREWORD BY TODD WILKINSON







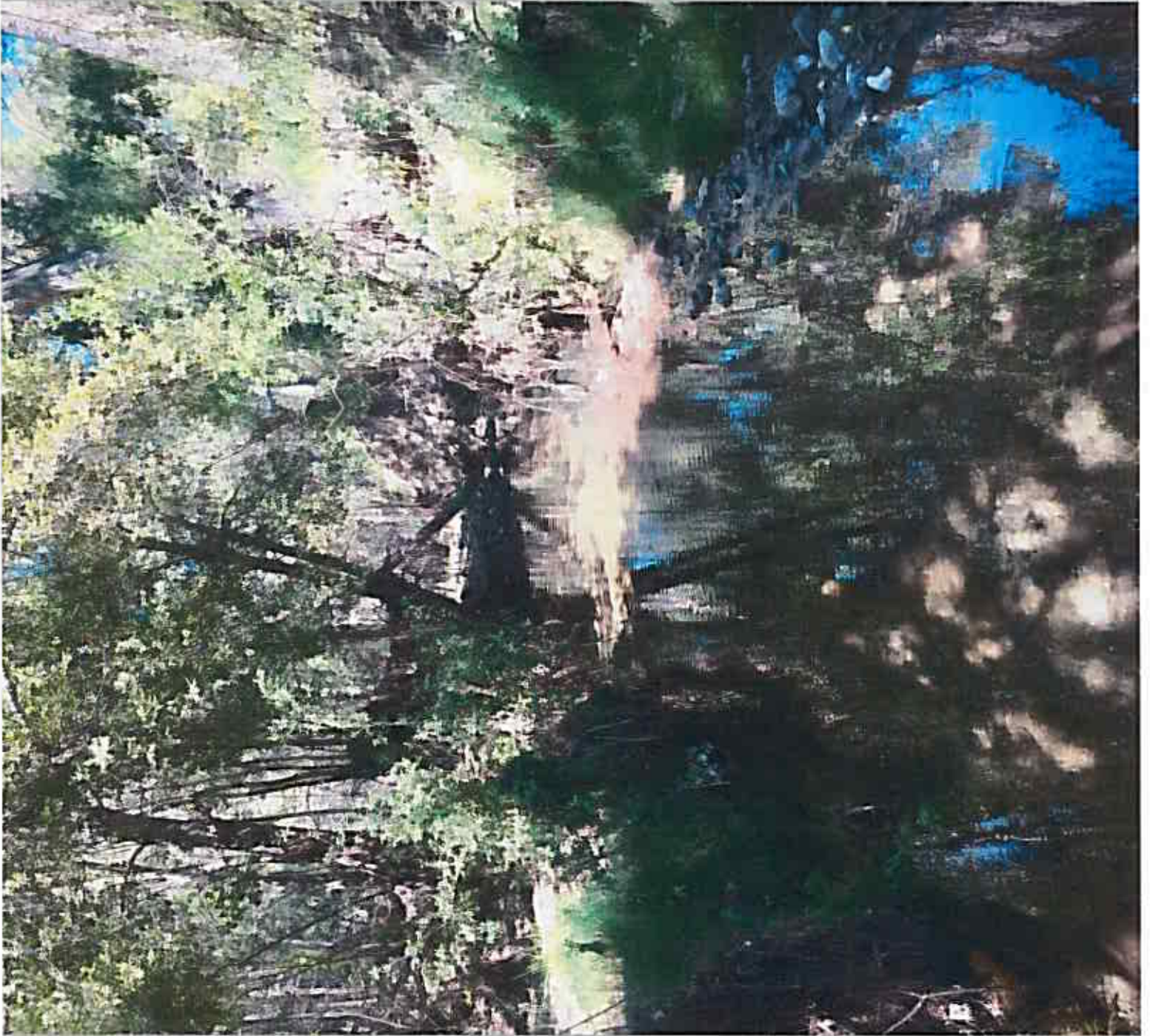


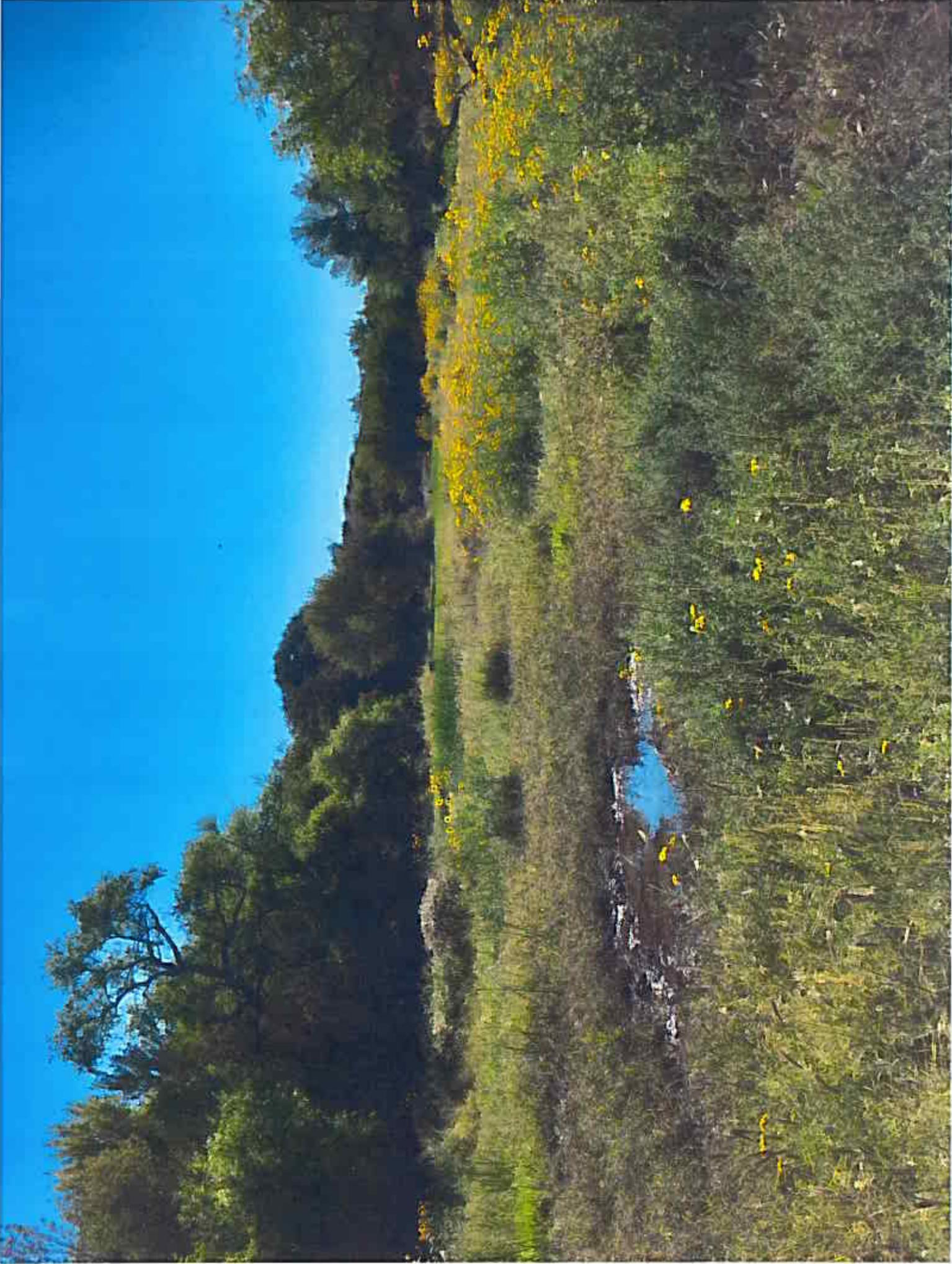












Ladder Ranch NM

Georgia Mee Well

Number 16

No. 1 Well

Number 3 Well

Wild Horse

Crews Well

Las Animas Creek

Seco Creek

Ladder HQ

Higgins Well

Seco Well

Shipping Pems Well

Wanda Well

Myers Well
John Cross Well

Evans Well

53 Water Well

54 Water Well

Feedlot Well

27-27 3 Water Well

Copper Flat Mines

PW PW PW PW

Grubbs Arroyo

Greenham Arroyo

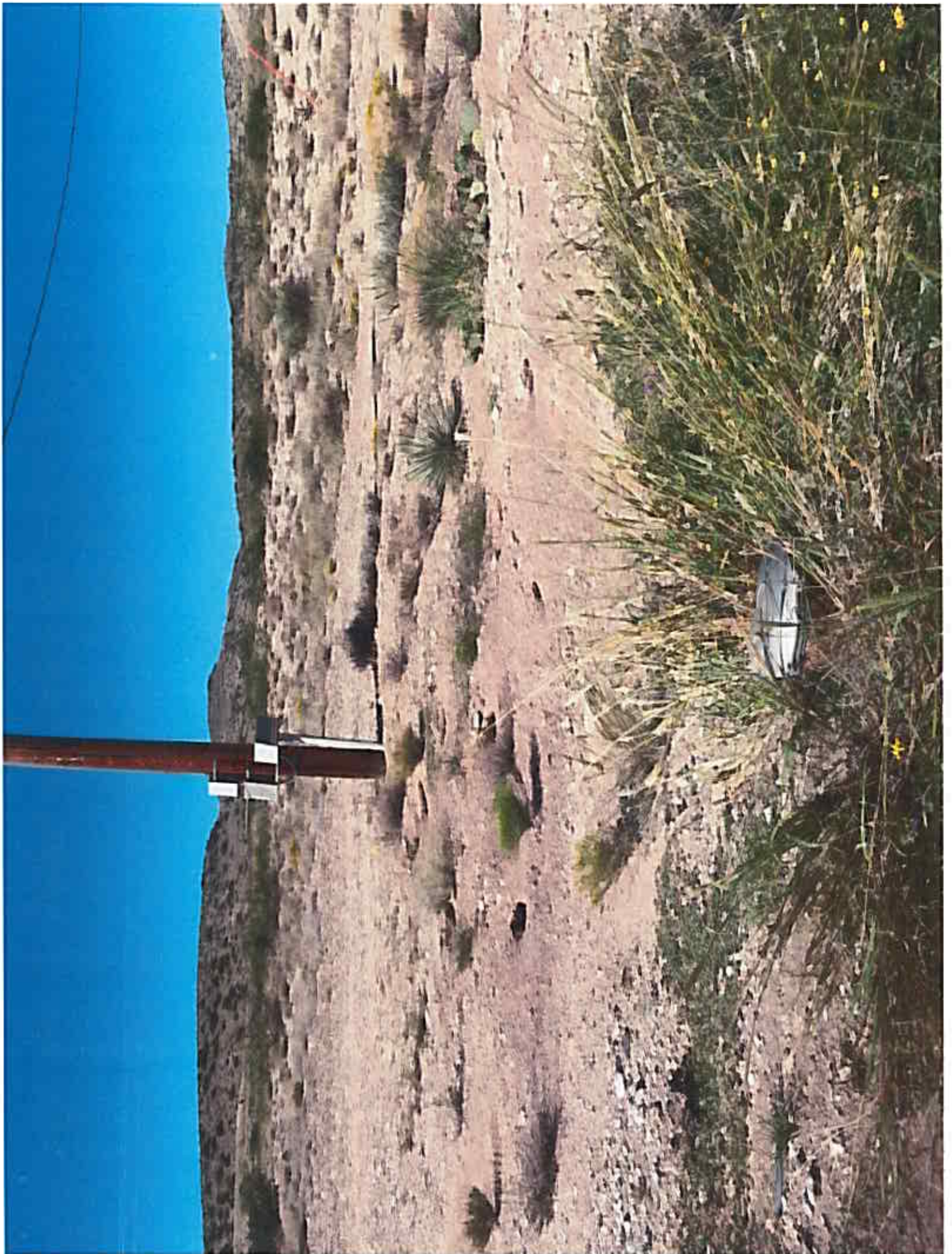
North Percha Cr





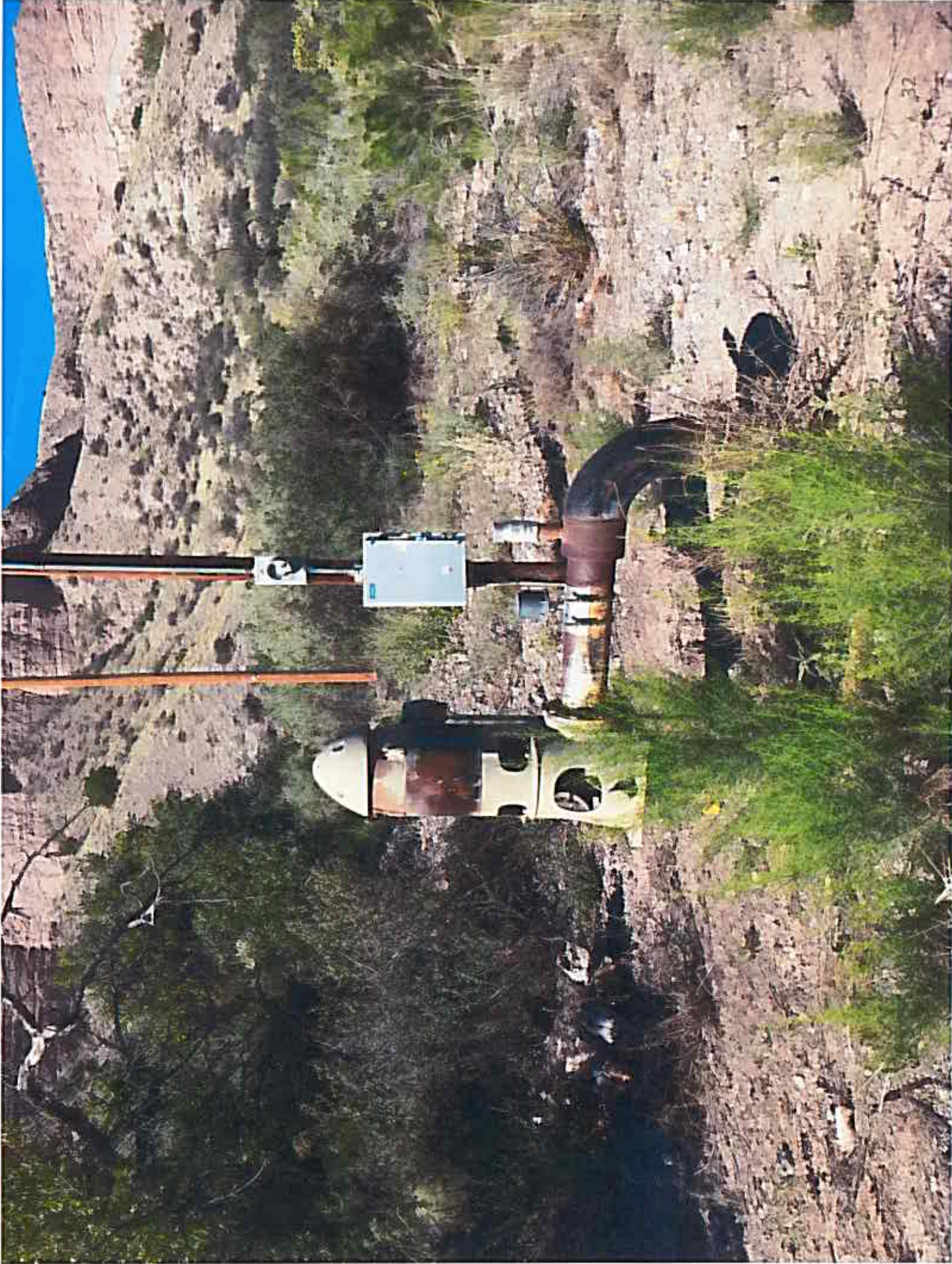












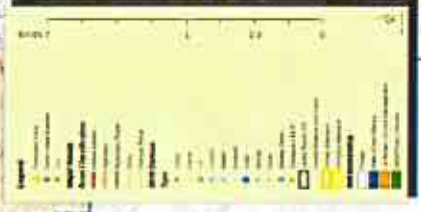






Ladder Ranch NM

Number 16



Number 3 Well

No. 2 Well

George Mes Well

Crews Well

Las Animas Creek

Seco Creek

Ladder HQ

Higgins Well

Seco Well

Shipping Pens Well

Wanda Well

Myers Well

John Cross Well

Evens Well

Copper Flat Mine

53 Water Well

54 Water Well

Feedlot Well

27-27.5 Water Well

PW

PW

PW

PW

North Percha Cre

Crestock Arroyo

Greenham Arroyo

Wild Horse



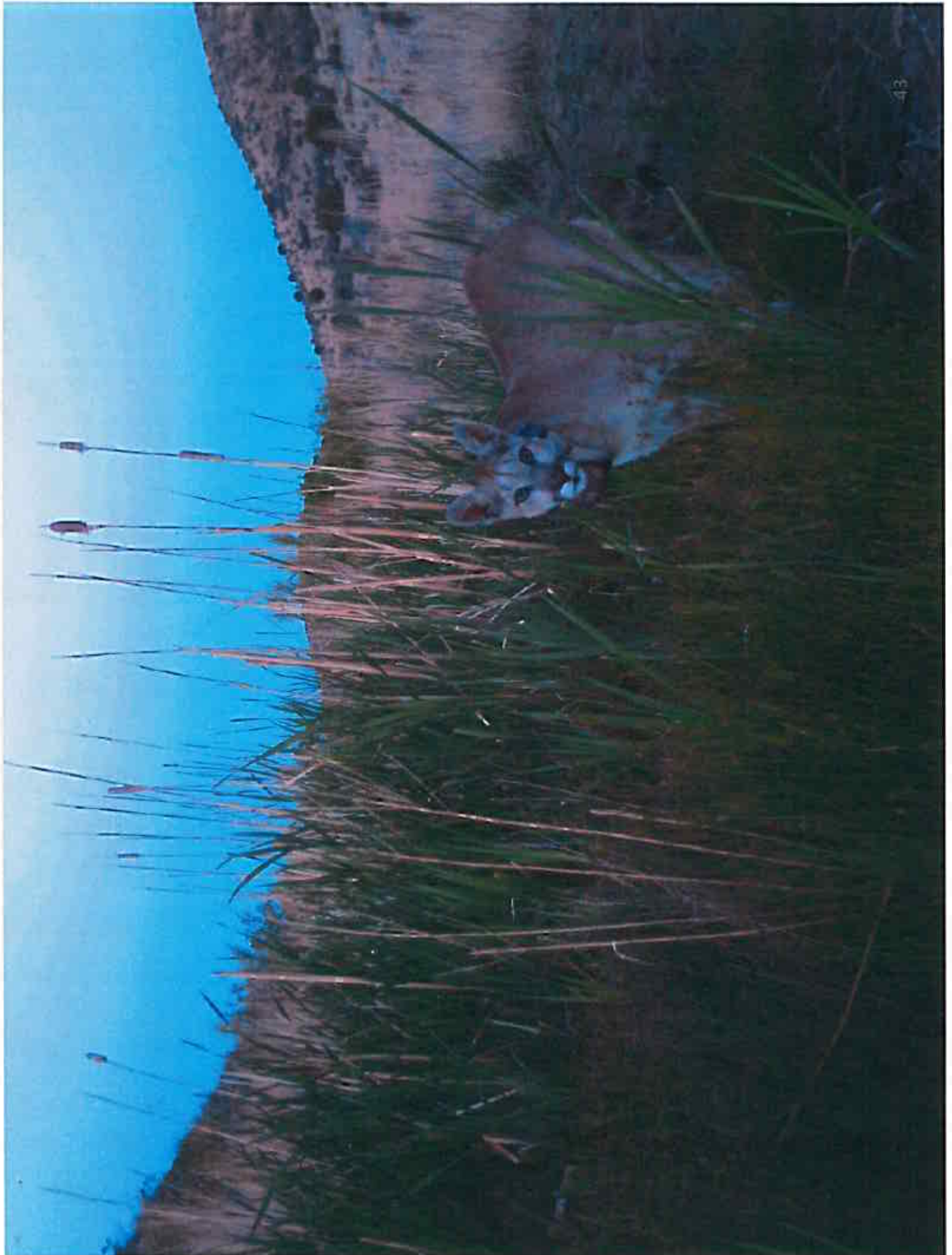






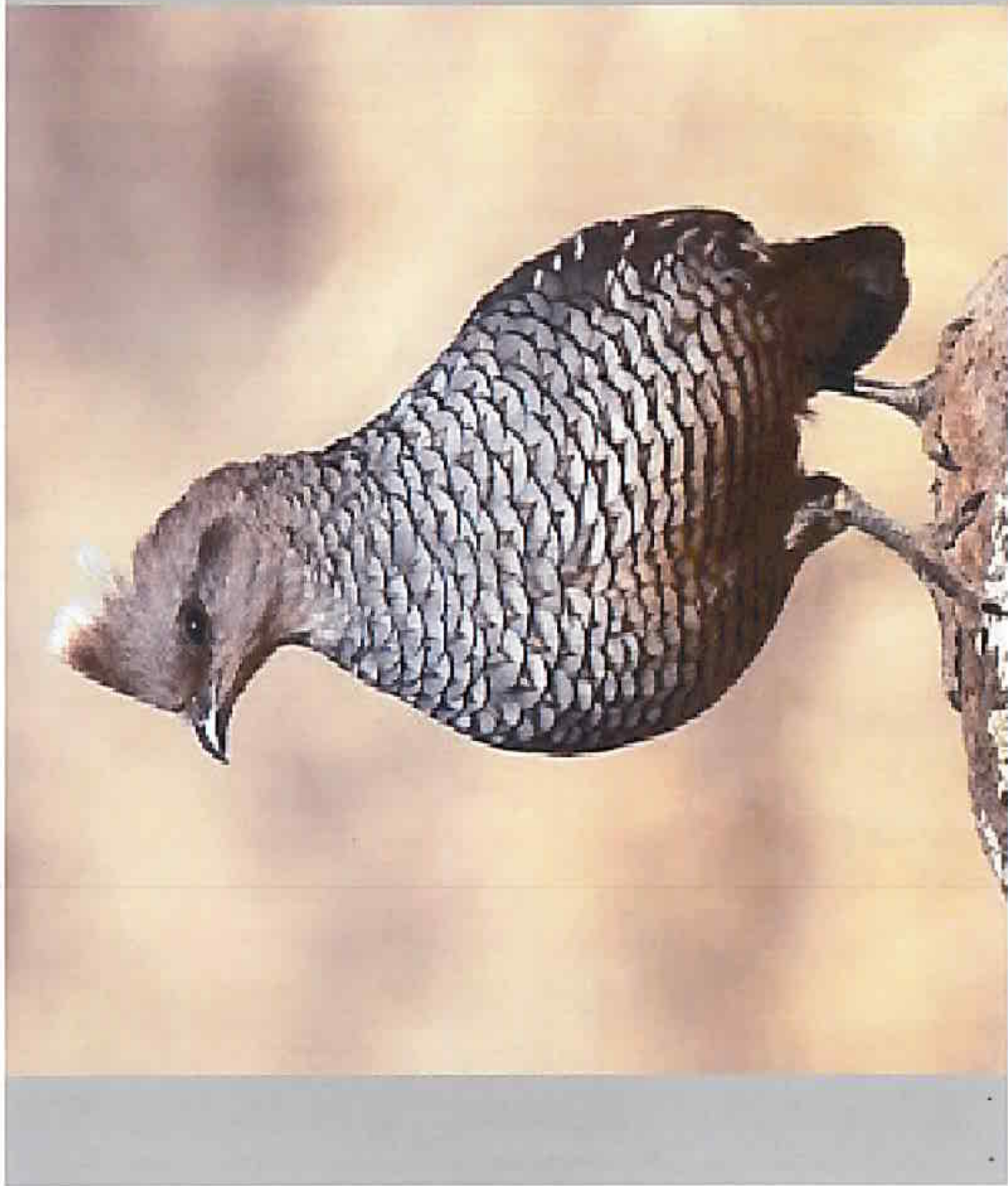














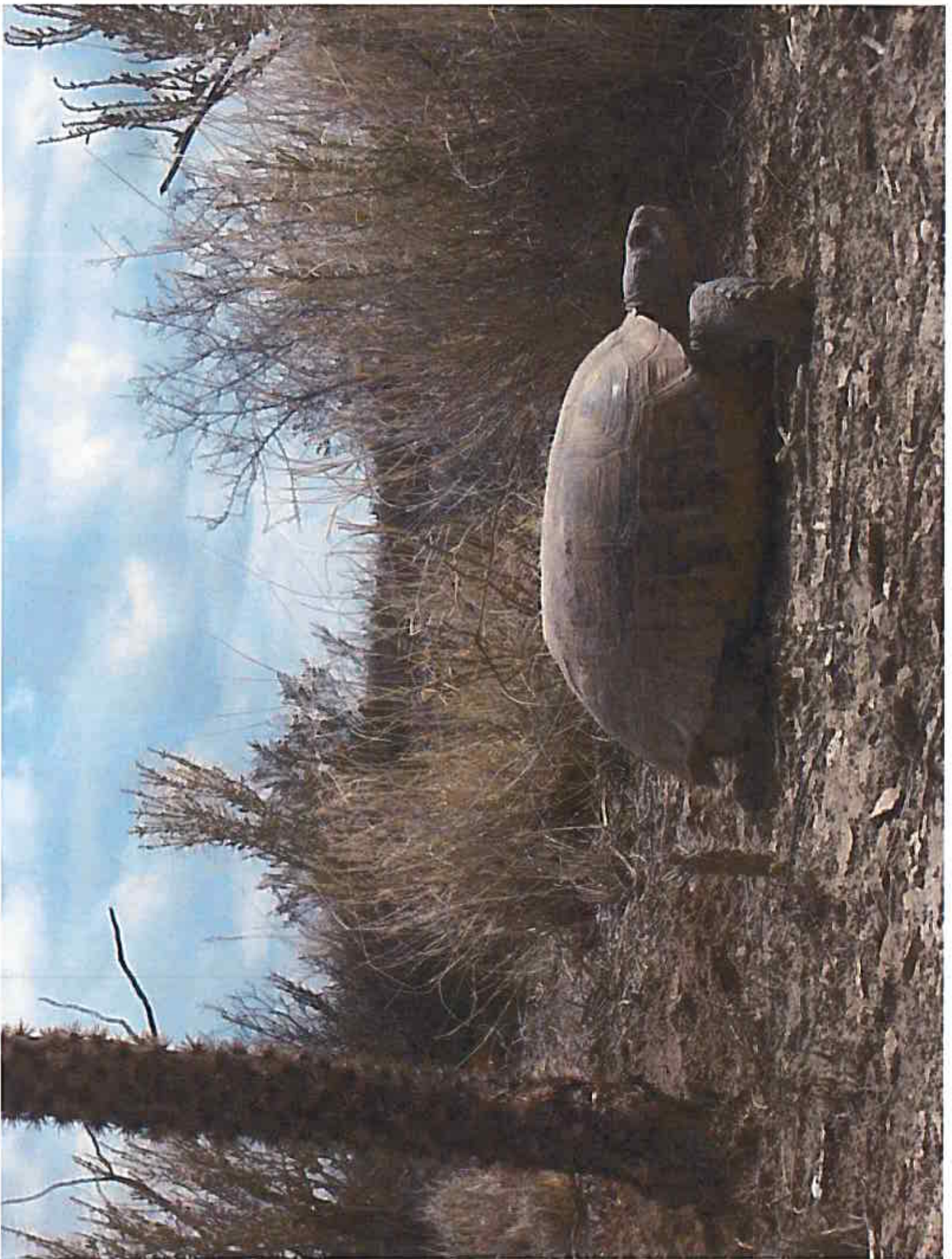




**T
U
R
N
E
R**
**E
N
D
A
N
G
E
R
E
D**
**S
P
E
C
I
E
S**
**F
U
N
D**









Turner Biodiversity Division



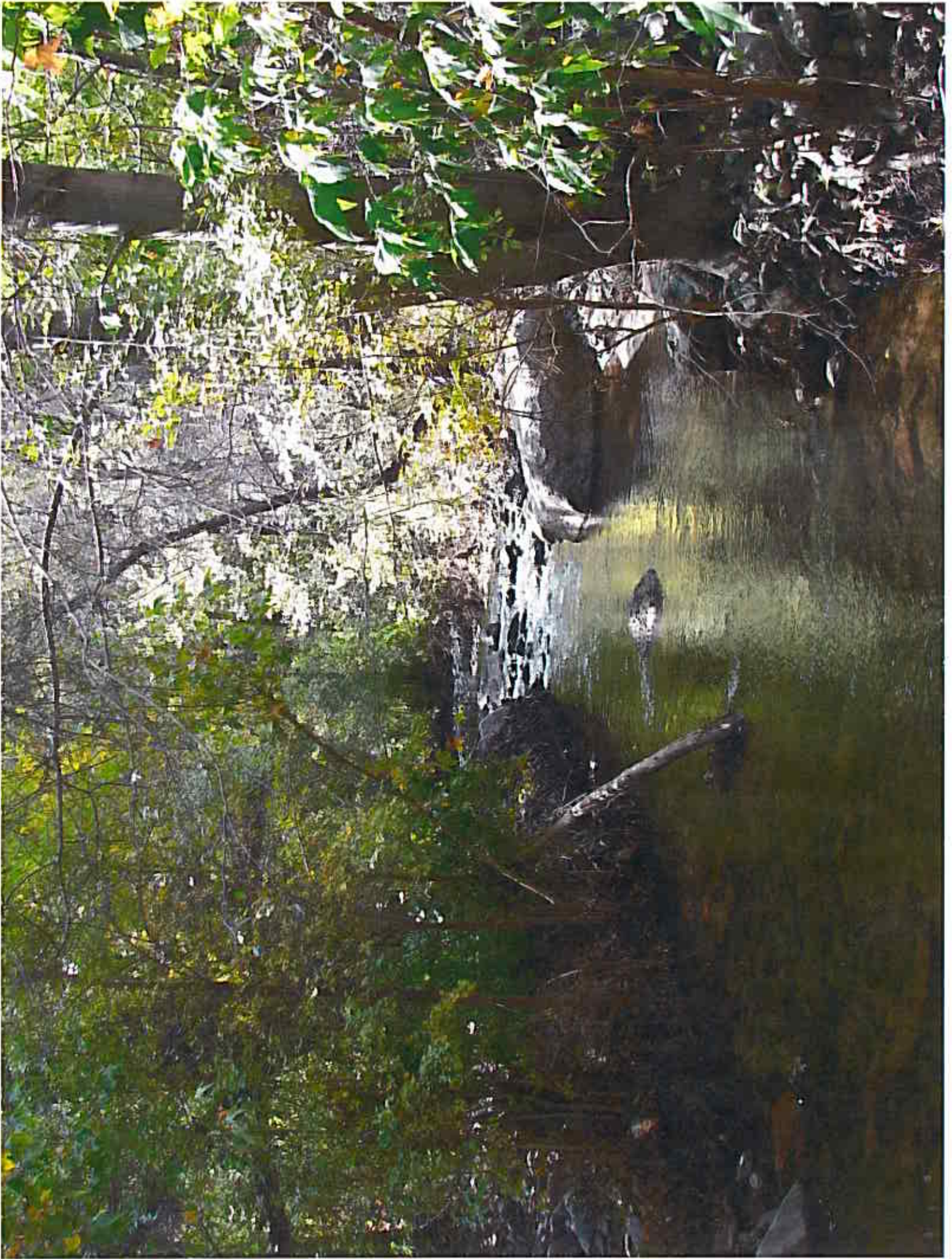
TURNER
ENDANGERED
SPECIES
FUND

2014/07/23

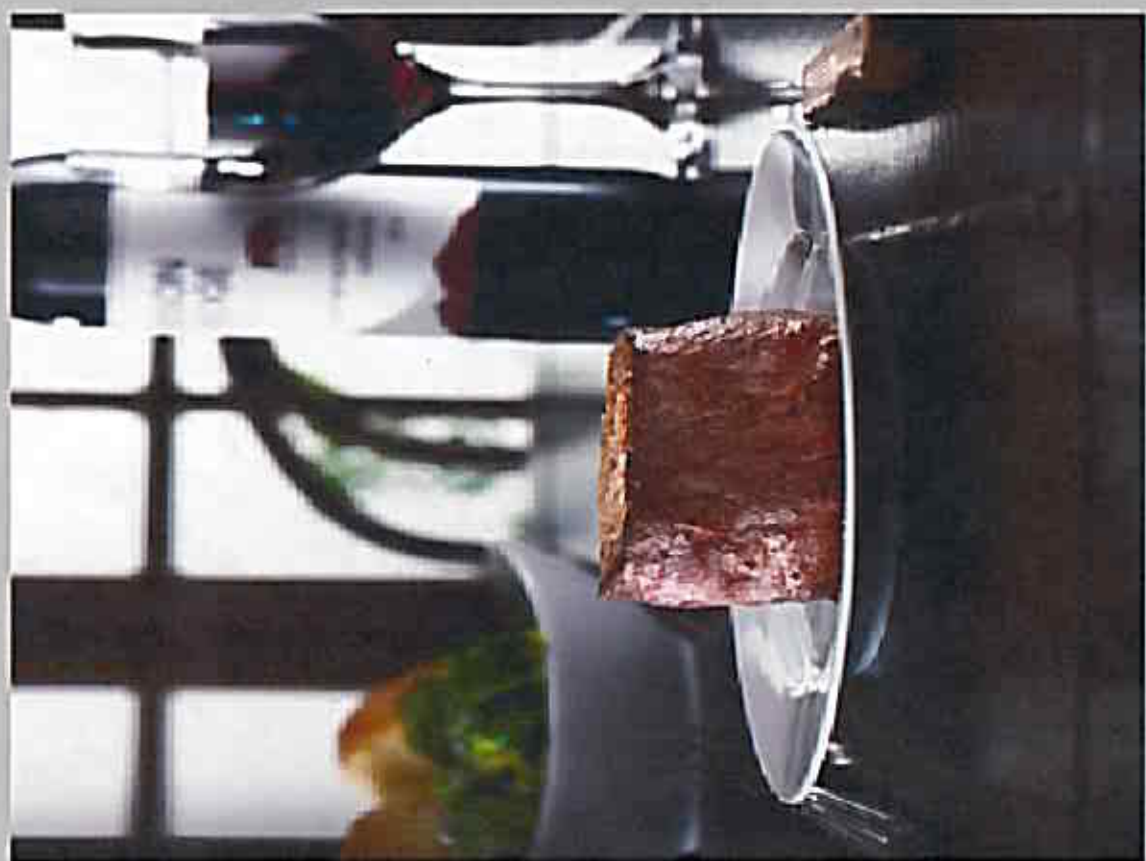


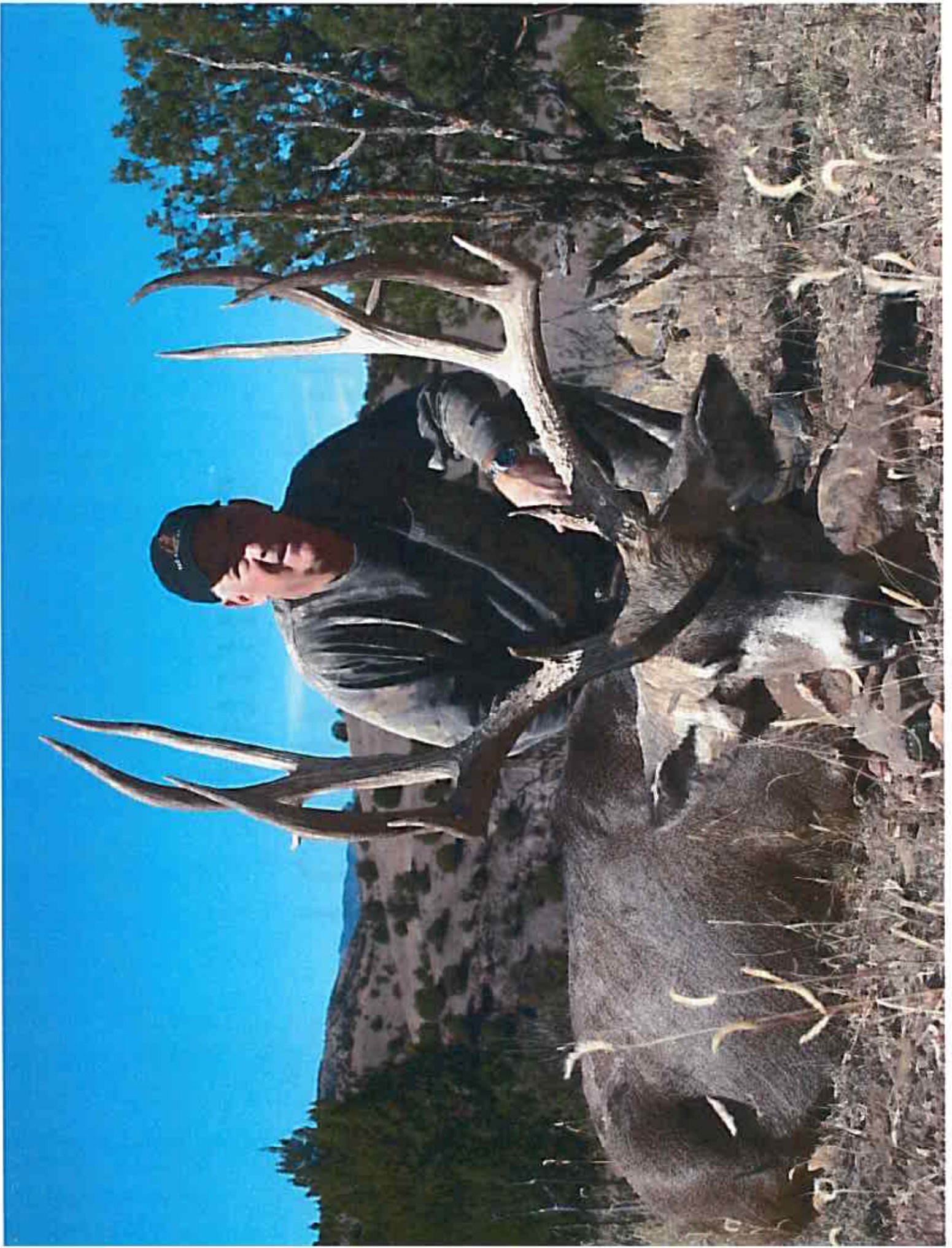


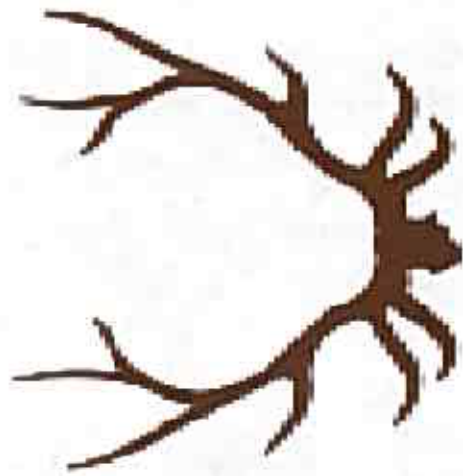










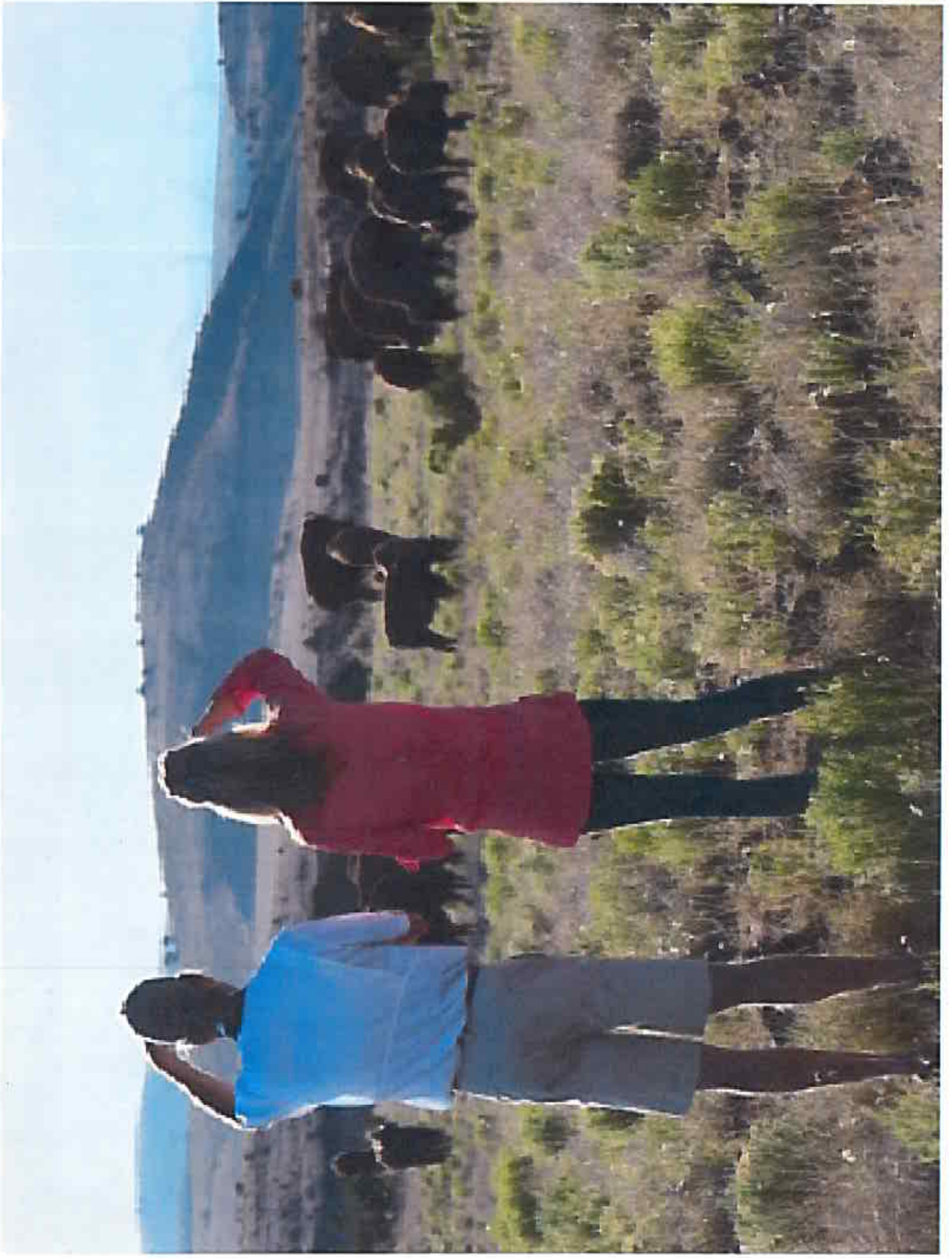


TURNER RANCH OUTFITTING



TED TURNER

EXPEDITIONS™









2004 10-10-04







