

**RANCHES
EXHIBIT
4**



Google Earth

Exhibit A



Affected Ranch Lands in Grayback Canyon Upgradient from the Copper Flat Mine

Affected Ranch Private Land 1,254 Acres More Or Less

Affected Ranch Leased BLM Lands 493 Acres More Or Less

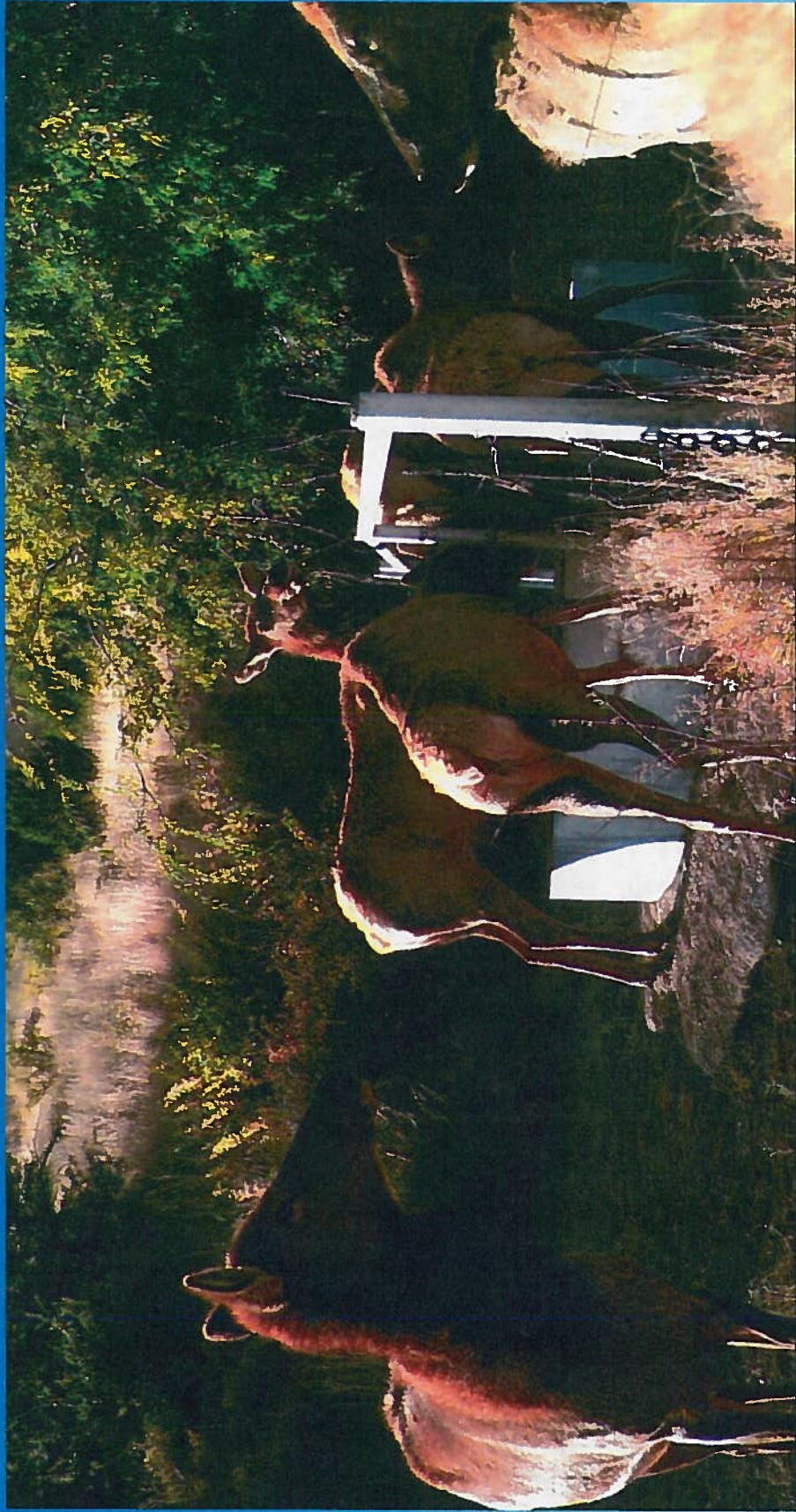
Google Earth

© 2018 Google

Exhibit B



Exhibit C



MOULTRIE

CAMERA 1

18 NOV 2017 07:57 am

Slide CA



Exhibit D



PRIMOS

083F

08-20-2017 08:43:15

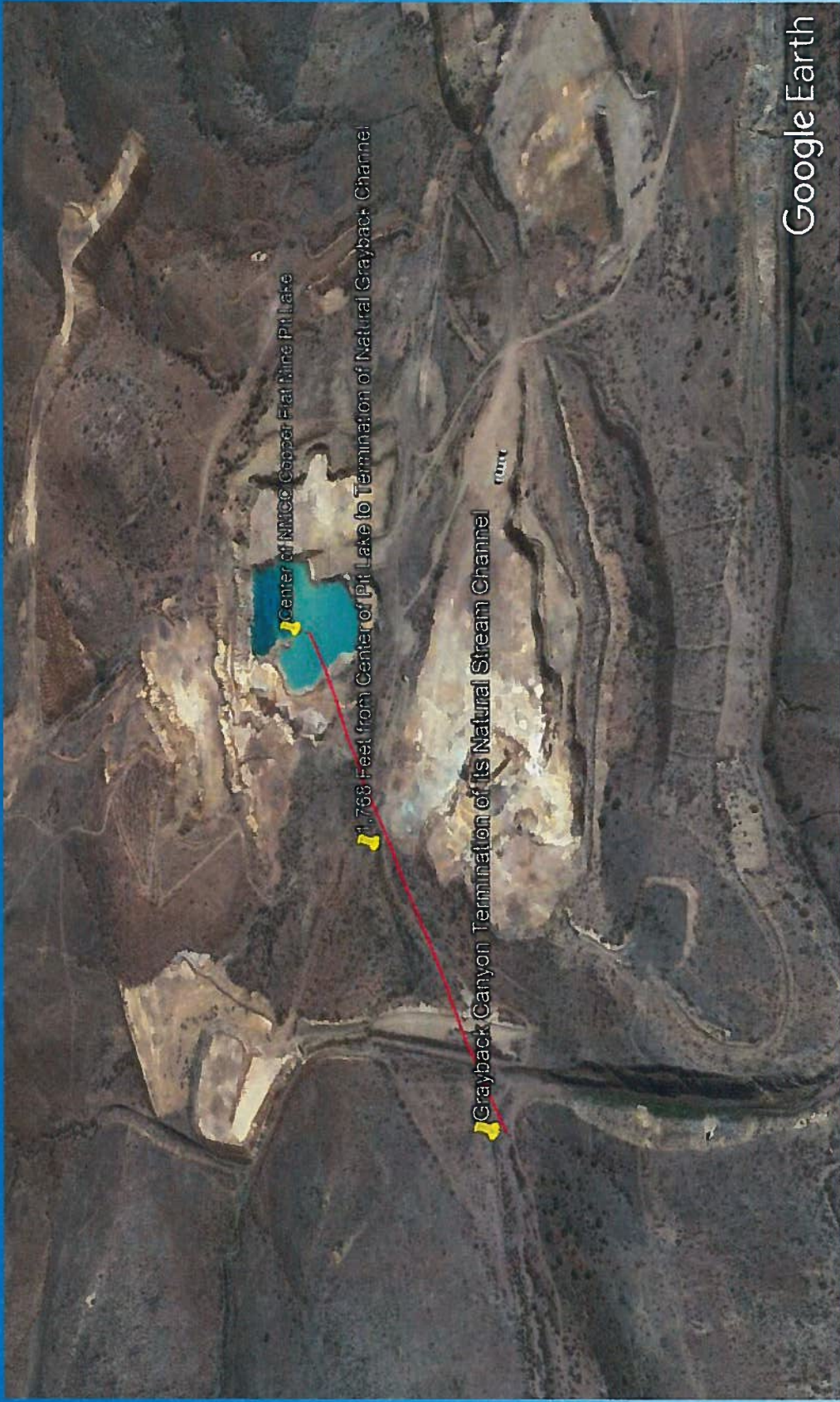
TRUTH CAM35

Slide DA



Google Earth

Exhibit E



Google Earth

Slide F

ABOVE MSL ELEVATION CHANGE FROM BOTTOM OF RANCH WELLS TO BOTTOM OF PROPOSED PIT

Total Elevation Change
860 Feet

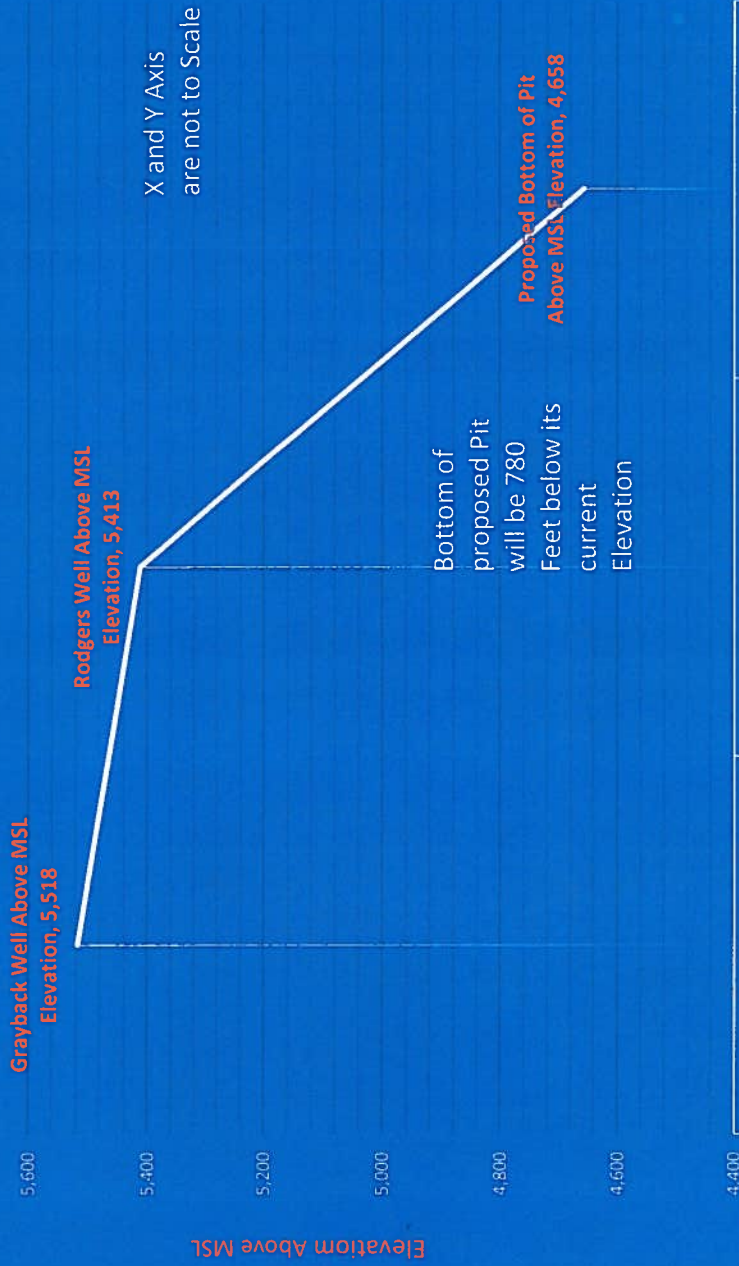


Table 3-47. Closest Noise-Sensitive Areas

Description	Approximate Distance from Project	Type	Estimated Existing Sound Levels (dBA)		
			Land Use Category	Day Night Sound Level (DNL)	Leq (daytime) Leq (nighttime)
Hillsboro Residential	3.5 miles 0.5 miles	Residential	Very Quiet Suburban and Rural Residential	42	40 34

Day-night Sound Level (DNL) is defined as the average sound energy in a 24-hour period with a 10-dB penalty added to the nighttime levels (10 p.m. to 7 a.m.). DNL is a useful descriptor for noise because: 1) it averages ongoing yet intermittent noise, and 2) it measures total sound energy over a 24-hour period. In addition, Equivalent Sound Level (Leq) is often used to describe the overall noise environment. Leq is the average sound level in dB. (dBA) relates to the range of human hearing and how humans perceive noise.

Reference: BLM Draft EIS for Copper Flat Mine 2015 Draft, page 3-226

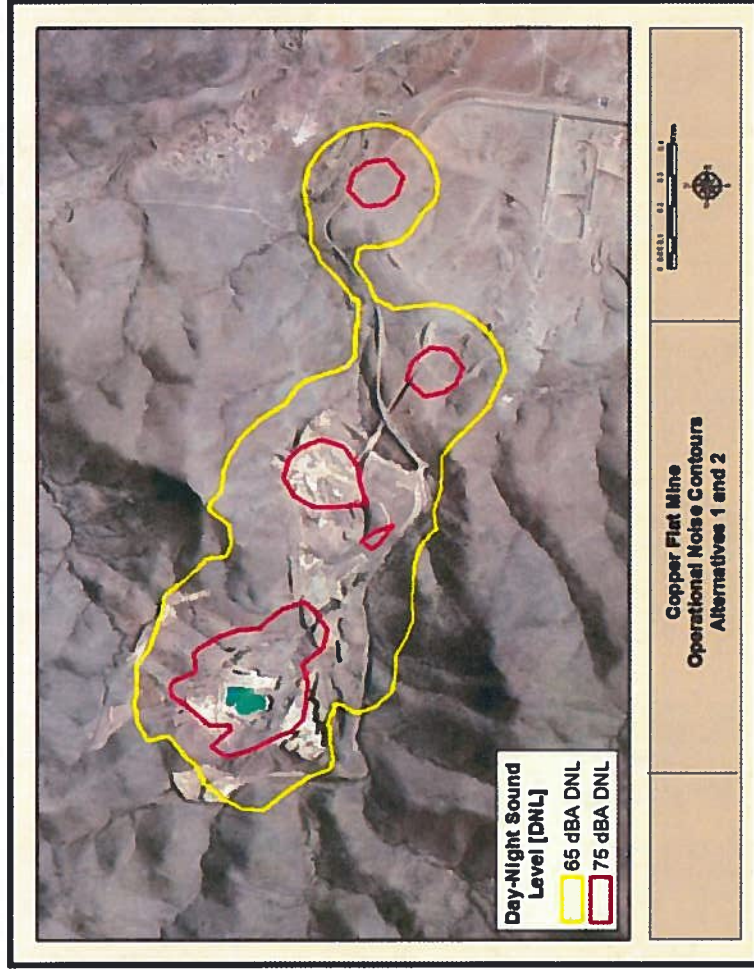
Closest Noise-Sensitive Areas Including Quite Rural Area						
Description	Approximate Distance from Project	Type	Estimated Existing Sound Levels (dBA)			Leq (nighttime)
			Land Use Category	DNL	Leq (daytime)	
Hillsboro Residential	3.5 miles 0.5 miles	Residential	Very Quiet Suburban and Rural Residential	42	40	34
Quite Rural Area	1,680 feet or .3 miles	Rural	Ranching and Wildlife Habitat	30		

Reference: [IAC Acoustical Library](#) "Comparative Examples of Noise Levels",
For data on Quite Rural Areas.

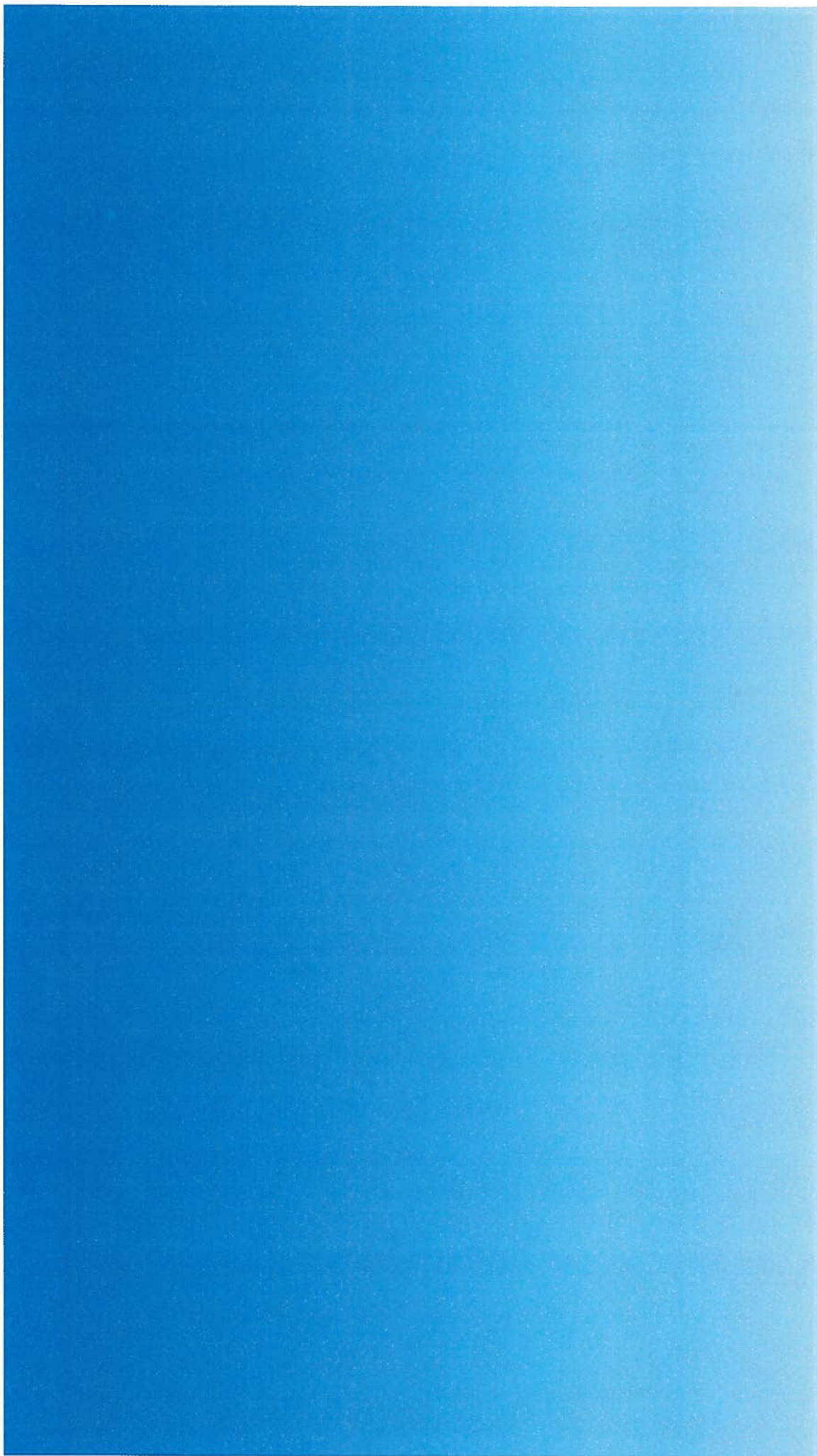
Table 3-49 Risk of Noise Concern and Complaints from Blasting

Risk of Noise Concern	Peak Noise Levels	Critical Distance (feet)
Low	<115 dBP	>2,344 feet
Medium	115-130 dBP	556 – 2,334 feet
High	130-140 dBP	<556 feet

Figure 3-47. Estimated Noise from Alternatives 1 and 2

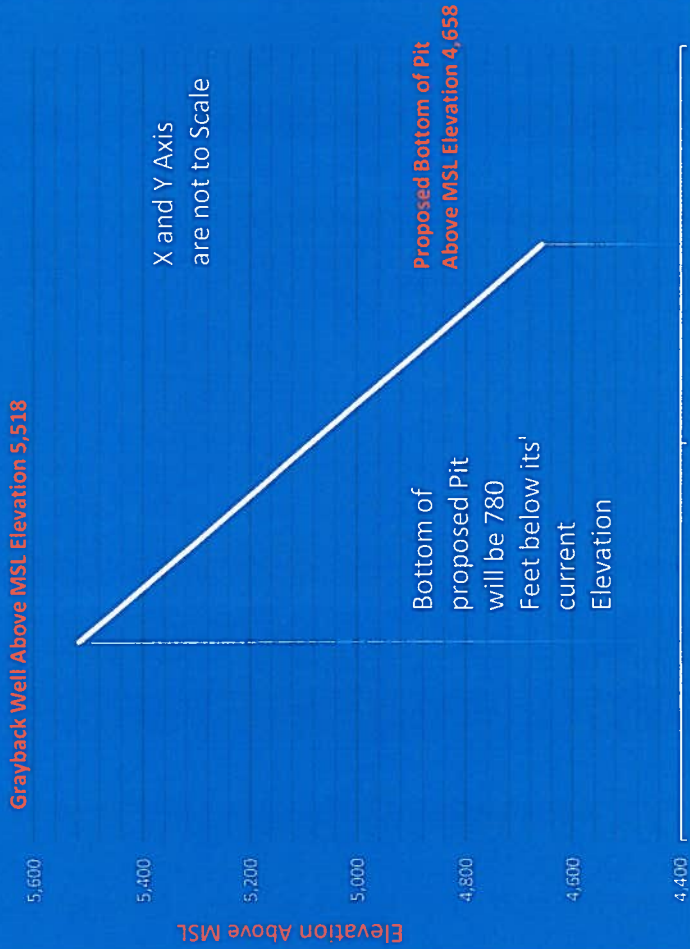


Source: LPES, Inc. 2014.



ABOVE MSL ELEVATION CHANGE FROM THE
BOTTOM OF GRAYBACK WELL TO THE BOTTOM OF
PROPOSED PIT

Total Elevation
Change 860
Feet



ABOVE MSL ELEVATION CHANGE FROM THE
BOTTOM OF RODGERS WELL TO THE BOTTOM OF
PROPOSED PIT

Total Elevation
Change 755
Feet

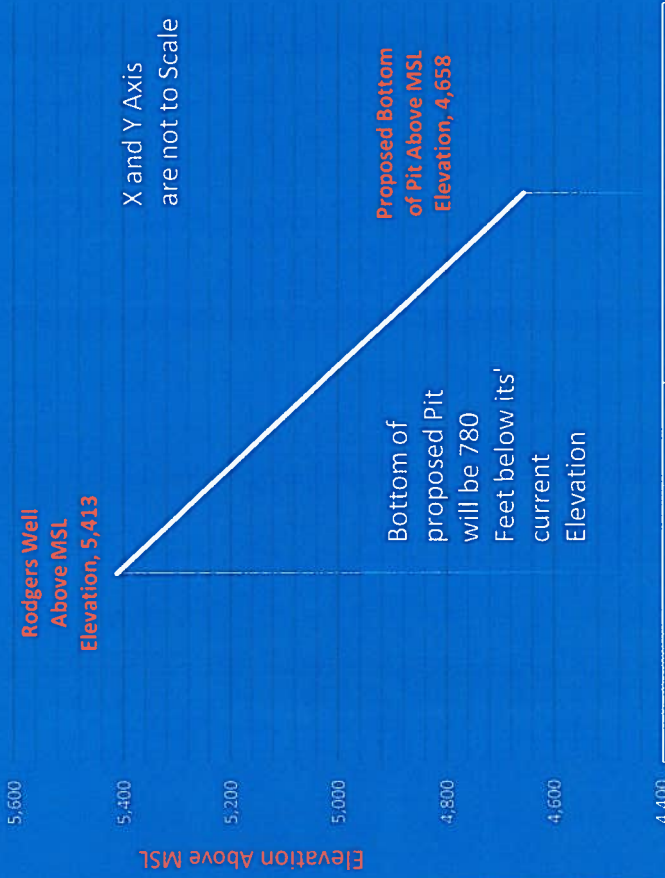


Exhibit 6G