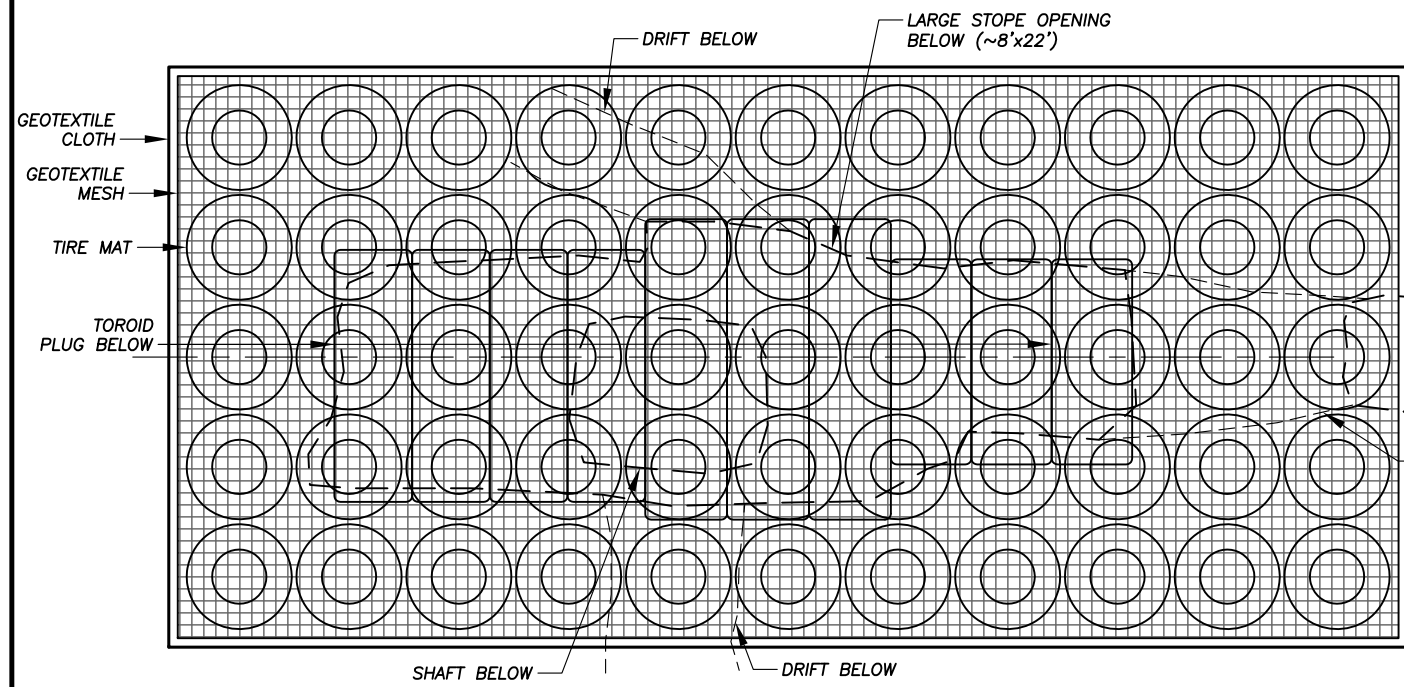
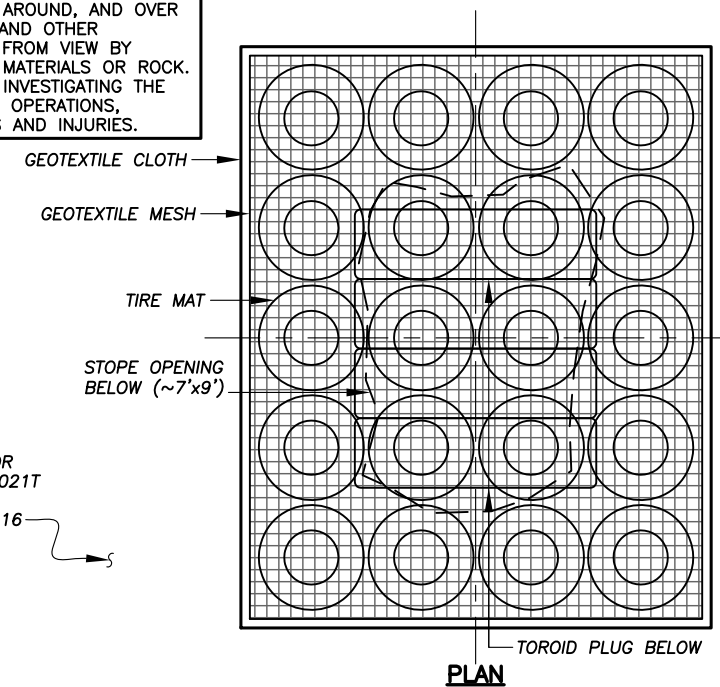


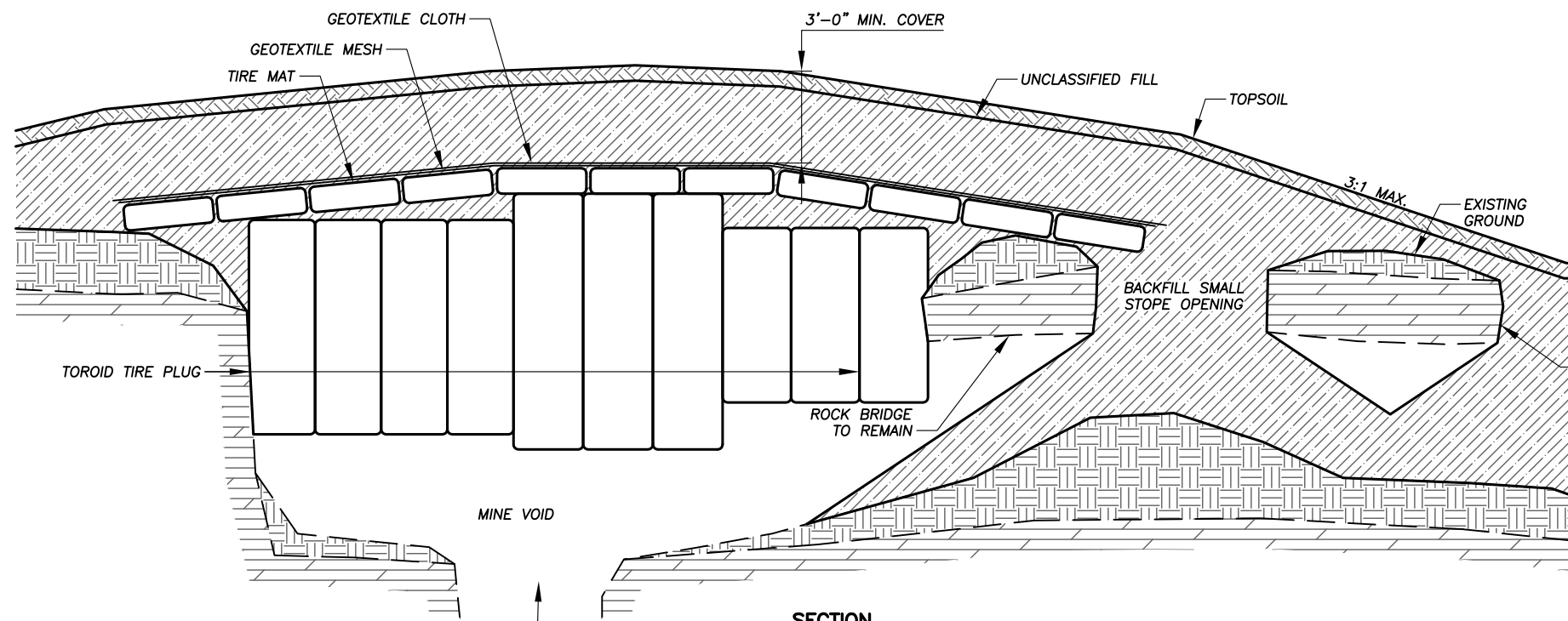
CAUTION - THIS PROJECT REQUIRES CONSTRUCTION WORK IN, AROUND, AND OVER HAZARDOUS AND UNPROTECTED MINE SHAFTS, STOPS, ADITS, AND OTHER OPENINGS WHICH MAY BE OPEN TO THE SURFACE OR HIDDEN FROM VIEW BY TRASH, DEBRIS, OR THIN AND UNSTABLE LAYERS OF SURFACE MATERIALS OR ROCK. THE CONSTRUCTOR SHALL BE RESPONSIBLE FOR THOROUGHLY INVESTIGATING THE SITE CONDITIONS AND SCHEDULING HIS EQUIPMENT, EQUIPMENT OPERATIONS, PERSONNEL, AND SAFETY PROCEDURES TO PREVENT ACCIDENTS AND INJURIES.



PLAN

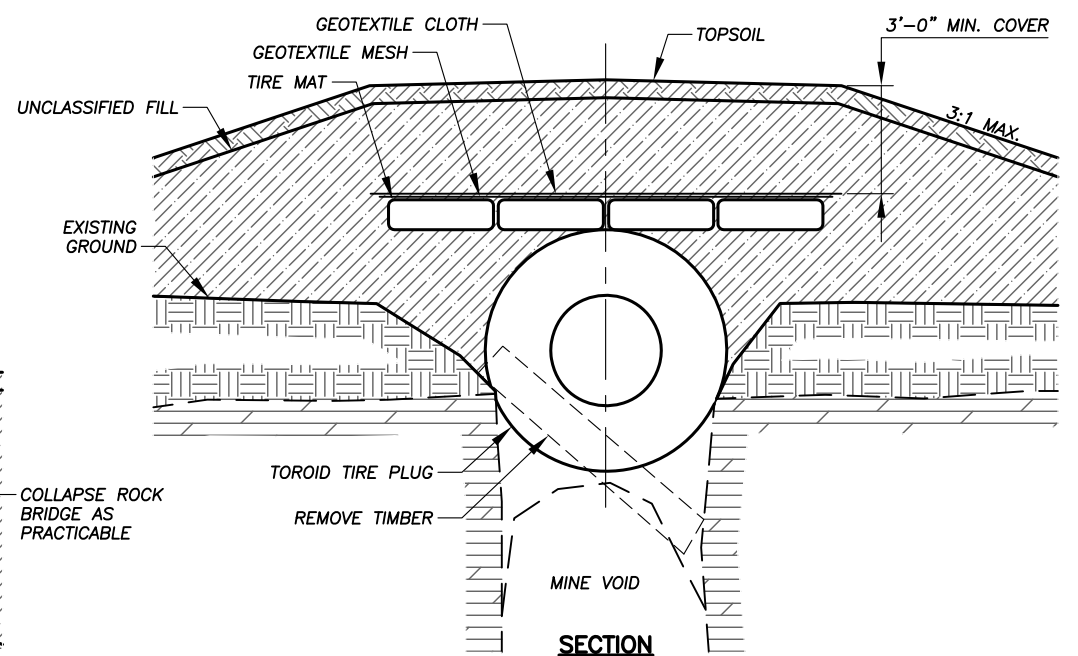


PLAN



SECTION

FEATURE 048-0210C STOPE TOROID TIRE PLUG



SECTION

FEATURE 049-000T STOPE TOROID TIRE PLUG

KEEP SHAFT AND TWO SIDE DRIFTS INSIDE LARGE STOPE ACCESSIBLE FOR BATS

PRELIMINARY LIST OF MATERIALS - 048-0210C

LARGE TOROID PLUG UNITS -- 27" X 49" ~8'	3 UNITS
MEDIUM TOROID PLUG UNITS -- 7'	4 UNITS
SMALL TOROID PLUG UNITS -- 5'	3 UNITS
SMALL TOROID MAT UNITS	55 UNITS
5/16" GALVANIZED STEEL CABLE	750 FT.
5/16" CROSBY CABLE CLIPS	230 UNITS
GEOTEXTILE MESH	500 SQ FT
GEOTEXTILE NONWOVEN CLOTH	600 SQ FT

GENERAL NOTES:

1. THIS DRAWING SHOWS THE GENERAL SHAPES AND APPROXIMATE SIZES OF THE MINE OPENINGS AND THE CORRESPONDING LAYOUT OF THE TOROID PLUGS. THE DRAWING SHALL BE USED AS A GUIDE FOR FIELD LAYOUT. DETERMINE THE ACTUAL LAYOUT OF THE CLOSURES IN THE FIELD.
2. THE ARRANGEMENT OF TIRES IN THE PLUGS MAY BE VARIED FROM THAT INDICATED TO FIT SITE CONDITIONS AND TIRE AVAILABILITY, AS LONG AS THE FUNCTIONALITY OF THE PLUGS IS NOT COMPROMISED.
3. MINIMIZE THE AMOUNT OF ROCK AND OTHER DEBRIS THAT FALLS INTO THE MINE OPENINGS DURING CONSTRUCTION.
4. AVOID BLOCKING THE OPENINGS TO THE SHAFT AND TWO SIDE DRIFTS INSIDE THE FEATURE 048-0210C LARGE STOPE OPENING TO ALLOW FOR BAT PASSAGE.
5. SLOPE THE FINISH GRADES AT A MINIMUM OF 4% AND A MAXIMUM OF 3:1 TO DRAIN STORM WATER AWAY FROM THE TOROID PLUG INSTALLATIONS.

PRELIMINARY LIST OF MATERIALS - 049-000T

MEDIUM TOROID PLUG UNITS -- 7'	4 UNITS
SMALL TOROID MAT UNITS	20 UNITS
5/16" GALVANIZED STEEL CABLE	200 FT.
5/16" CROSBY CABLE CLIPS	70 UNITS
GEOTEXTILE MESH	180 SQ FT
GEOTEXTILE NONWOVEN CLOTH	210 SQ FT

**ABANDONED MINE LAND PROGRAM
MINING AND MINERALS DIVISION**
ENERGY, MINERALS AND NATURAL RESOURCES DEPARTMENT

SCALE: 3/16" = 1'-0"
DATE: DEC. 5, 2007
STRIEBY & COLUMBIA LODES
DRAWN BY: JAK
REVISED:

TOROID PLUG CLOSURES AT F.048-0210C & F.049-000T STOPES

LAKE VALLEY MINE SAFEGUARD PROJECT - PH. IV
DRAWING NUMBER: **FIGURE 13**

048-021 049-000 STOPE TIRE PLUGS.DWG PLOT SCALE 1 = 64