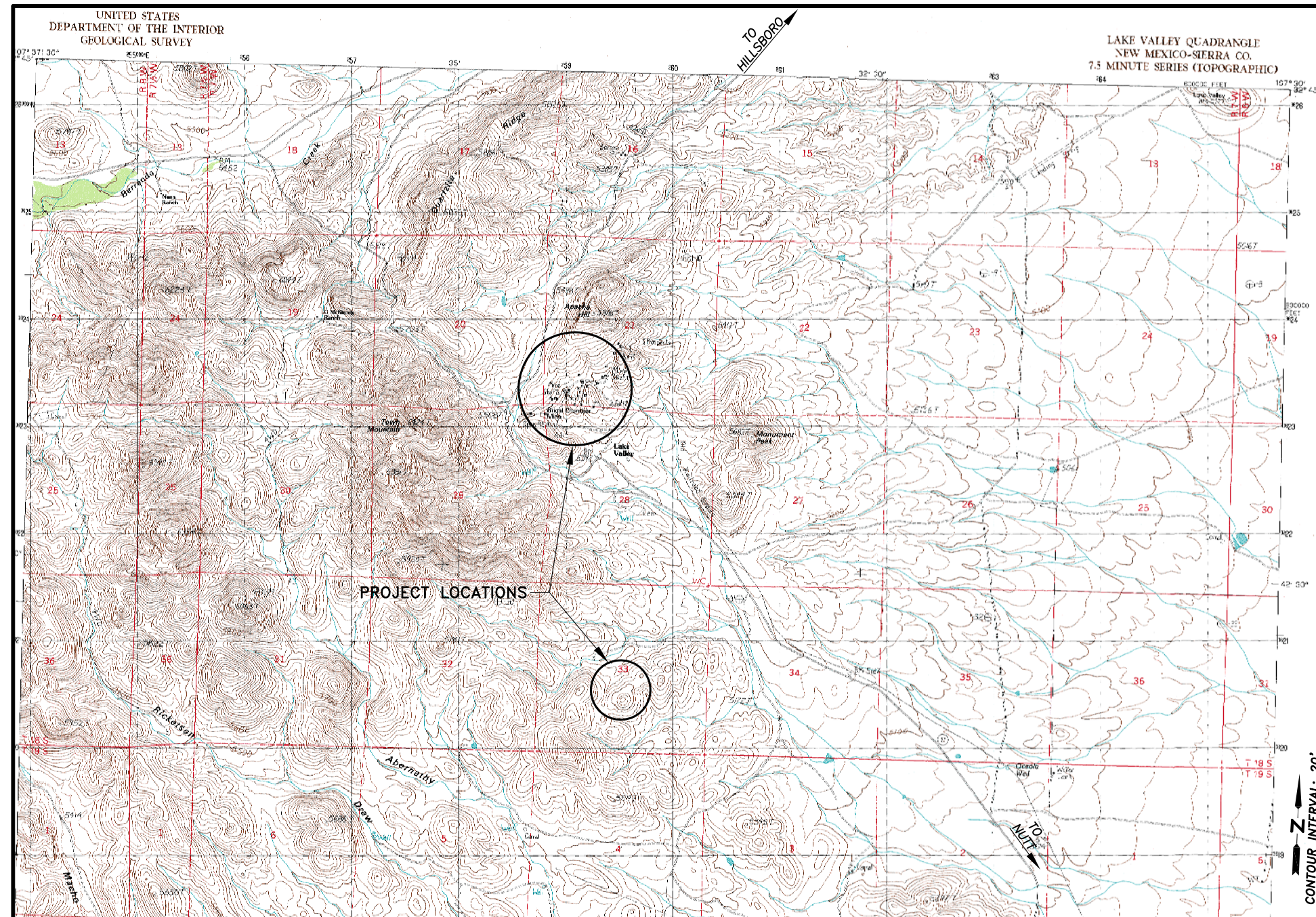


DRAWINGS FOR THE LAKE VALLEY MINE SAFEGUARD PROJECT - PHASE IV LAKE VALLEY, NEW MEXICO APRIL 2010

INDEX OF FIGURES

TITLE SHEET	1
LAKE VALLEY PHASE IV PROJECT SITES	2
SITE MAP - SITES 045 & 842 (SOUTH CAROLINA & CAROLINA LODES)	3
SITE MAP - SITE 046 (NORTH CAROLINA LODE)	4
SITE MAP - SITE 048 (STRIEBY LODE)	5
SITE MAP - SITE 049 (COLUMBIA LODE)	6
SITE MAP - SITE 050 (APACHE LODE)	7
SITE MAP - SITE 051 (LITTLE ONE LODE)	8
SITE MAP - SITE 052 (LAST CHANCE LODE)	9
SITE MAP - SITE 053 (COMSTOCK LODE)	10
MAP DETAIL - AREA NEAR F.049-087S SHAFT	11
STEEL MESH CLOSURES AT F. 046-104.1, 048-005S & 048-056S	12
TOROID PLUG CLOSURES AT F.048-0210C & F.049-000T STOPES	13
HORIZONTAL BAT GATE AT FEATURE 048-021aS SHAFT	14
AIRFLOW CLOSURE AT FEATURE 048-035S SHAFT	15
TOROID PLUG AT F.049-021T DECLINE & BAT GATE AT F.049-116S SHAFT	16
CLOSURE FRAME DETAILS AT F. 049-116S SHAFT	17
HORIZONTAL BAT GATE AT FEATURE 049-066S SHAFT	18
HORIZONTAL BAT GATE AT FEATURE 049-067S SHAFT	19
HORIZONTAL BAT GATE AT FEATURE 049-068S SHAFT	20
HORIZONTAL BAT GATE AT FEATURE 049-069S SHAFT	21
HORIZONTAL BAT GATE AT FEATURE 049-070S SHAFT	22
BAT CUPOLA/DRAIN AT FEATURE 049-087S SHAFT	23
DETAILS AT FEATURE 049-087S SHAFT	24
BAT CUPOLA DETAILS AT FEATURE 049-087S SHAFT	25
BAT GATE AT FEATURE 050-131T DECLINE	26
STEEL MESH CLOSURES AT FEATURES 050-130S & 051-081S SHAFTS	27
BAT CUPOLA AT FEATURE 052-046S SHAFT	28
BAT CUPOLA DETAILS AT FEATURE 052-046S SHAFT	29
HORIZONTAL BAT GATE AT FEATURE 052-085S SHAFT	30
HORIZONTAL BAT GATE AT FEATURE 052-086S SHAFT	31
PUF PLUG AT FEATURE 052-089S SHAFT	32
TOROID PLUG OR PUF PLUG AT FEATURE 053-060S SHAFT	33
HORIZONTAL BAT GATE AT FEATURE 053-084S SHAFT	34
LATTICWORK & HATCH DETAILS	35
REMOVABLE CROSSBAR LOCK & SMALL MAMMAL ENTRY DETAILS	36
DETAIL - WATERBARS & VEHICULAR BARRIER	37
EARTH FILL SEAL SHAFT AND PIT CLOSURES	38



COVER.DWG PLOT SCALE 1" = 1'



ABANDONED MINE LAND PROGRAM
MINING AND MINERALS DIVISION
ENERGY, MINERALS AND NATURAL RESOURCES DEPARTMENT
SANTA FE, NEW MEXICO

PROJECT NO. EMNRD-MMD-2010-02

SCALE: 1" = ~4000'
EXCERPTED FROM "LAKE VALLEY, NEW MEXICO"
USGS 7.5' QUADRANGLE, PROVISION EDITION 1989