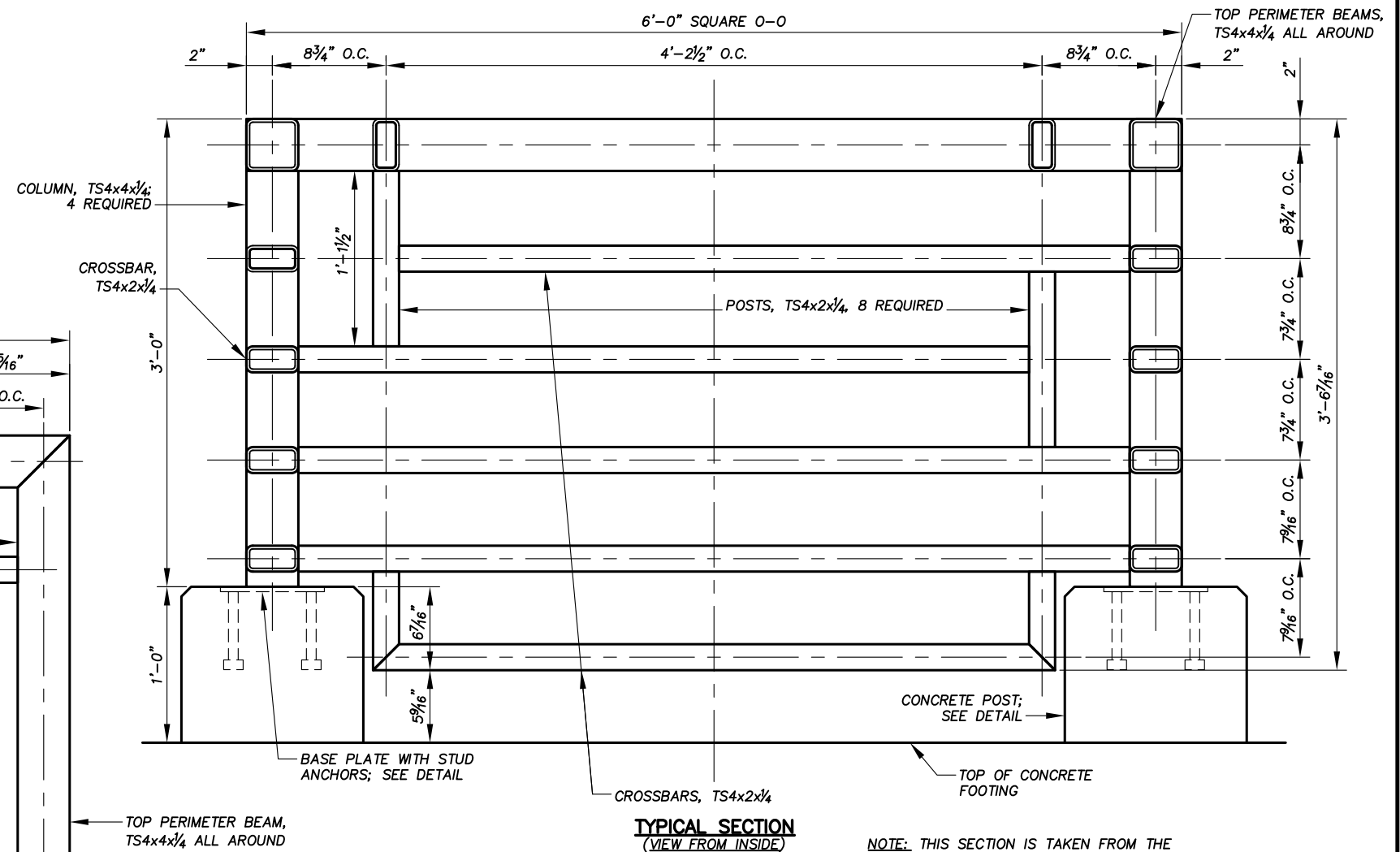


PLAN



NOTE: THIS SECTION IS TAKEN FROM THE INSIDE OF THE CUPOLA LOOKING OUT. FROM THE OUTSIDE THE VIEW IS MIRRORED. SEE ELEVATION VIEW FOR OUTSIDE.

GENERAL NOTES:

1. STEEL PLATES, SHAPES AND BARS SHALL BE WEATHERING STEEL. WELD ALL JOINTS. CONSTRUCT THE CUPOLA TO ELIMINATE SURFACES ON WHICH MOISTURE OR DEBRIS CAN BE TRAPPED. PLIES OF MATERIAL SHALL BE TIGHT TO PREVENT THE INCURSION OF MOISTURE. ALL TUBULAR MEMBERS SHALL BE HERMETICALLY SEALED TO PREVENT THE INCURSION OF MOISTURE. ROUND OR CHAMFER ALL EXPOSED SHARP CORNERS AND EDGES.
2. TOLERANCES ON THE CENTER-TO-CENTER DIMENSIONS BETWEEN CROSSBARS FOR BAT PASSAGE SHALL BE ±¹/₁₆ INCH.

ABANDONED MINE LAND PROGRAM
MINING AND MINERALS DIVISION
ENERGY, MINERALS AND NATURAL RESOURCES DEPARTMENT

SCALE: 1" = 1'-0"

DATE: DEC. 11, 2007

COLUMBIA LODE

DRAWN BY: JAK

REVISED:

BAT CUPOLA DETAILS AT FEATURE 049-087S SHAFT

LAKE VALLEY MINE SAFEGUARD PROJECT - PH. IV

DRAWING NUMBER:
FIGURE 25