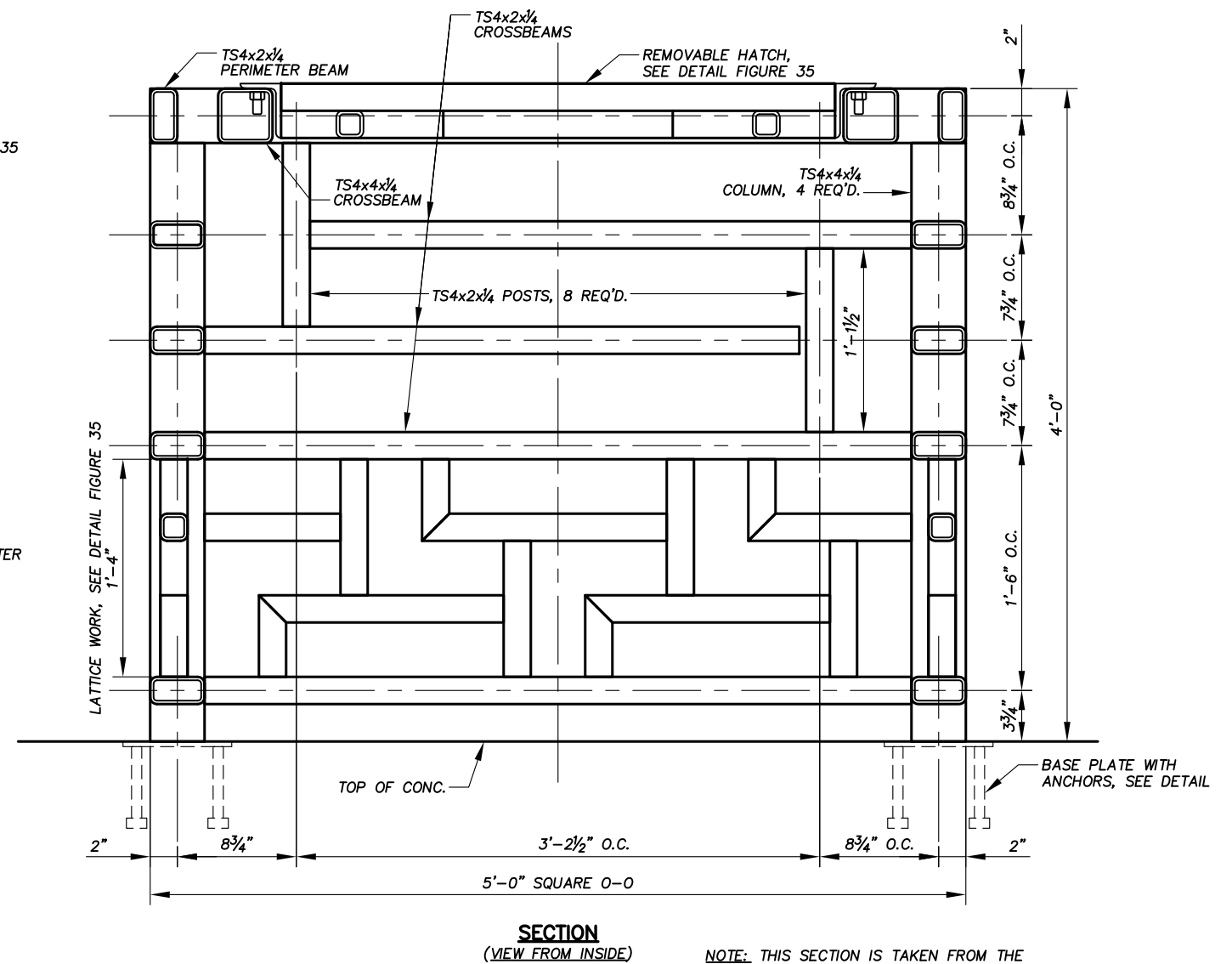
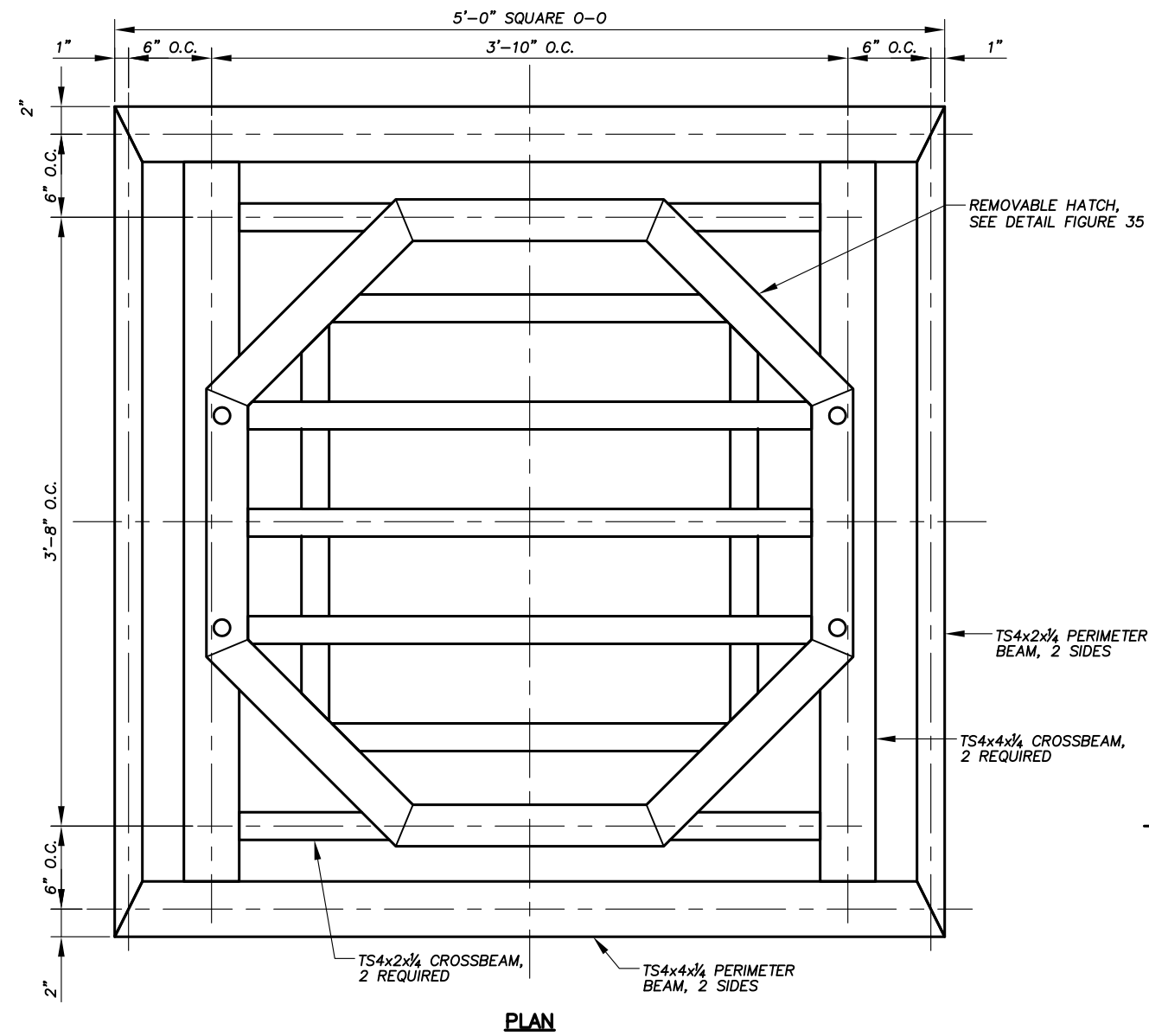


052-046 BAT CUPOLA DETAILS.DWG PLOT SCALE 1 = 12



**GENERAL NOTES:**

1. STEEL PLATES, SHAPES AND BARS SHALL BE WEATHERING STEEL. WELD ALL JOINTS. CONSTRUCT THE CUPOLA TO ELIMINATE SURFACES ON WHICH MOISTURE OR DEBRIS CAN BE TRAPPED. PLIES OF MATERIAL SHALL BE TIGHT TO PREVENT THE INCURSION OF MOISTURE. ALL TUBULAR MEMBERS SHALL BE HERMETICALLY SEALED TO PREVENT THE INCURSION OF MOISTURE. ROUND OR CHAMFER ALL EXPOSED SHARP CORNERS AND EDGES.
2. TOLERANCES ON THE CENTER-TO-CENTER DIMENSIONS BETWEEN CROSSBARS FOR BAT PASSAGE SHALL BE ±¼ INCH.

<b>ABANDONED MINE LAND PROGRAM</b> <b>MINING AND MINERALS DIVISION</b> ENERGY, MINERALS AND NATURAL RESOURCES DEPARTMENT		
SCALE: 1' = 1'-0"	LAST CHANCE LODGE	DRAWN BY: JAK
DATE: DEC. 14, 2007		REVISED:
<b>BAT CUPOLA DETAILS AT FEATURE 052-046S SHAFT</b>		
LAKE VALLEY MINE SAFEGUARD PROJECT - PH. IV		DRAWING NUMBER: <b>FIGURE 29</b>