



**Lancaster
Resources Inc.**

EMNRD H10023EM
Supplemental Information

OCT 19, 2023

Question 1 – Overview Map with Surface Land Ownership



Question

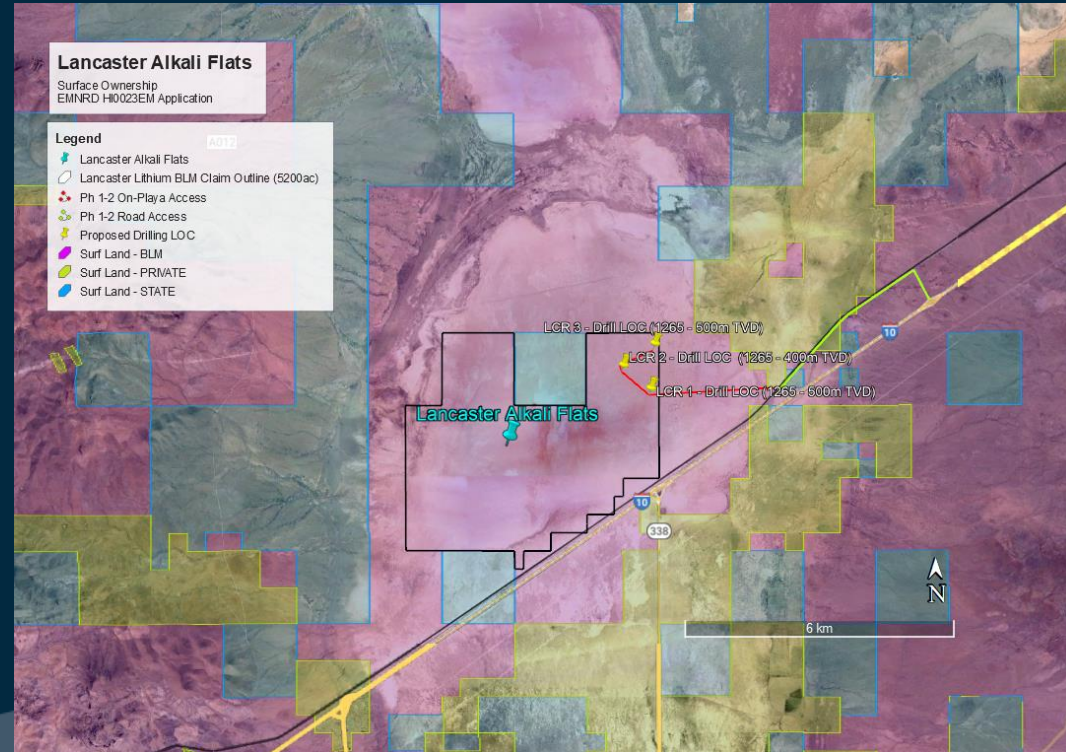
Under section 3 provide additional map showing

- Surface Land Ownership
- Existing and Proposed Roads (incl. to borehole)
- Need route between well locations

Answer

Surface ownership map shown on right. Map detailing access and well location on next slide.

Lancaster Leases cover only BLM surface lands



Question 1 – Overview Map with Surface Land Ownership



Answer cont.

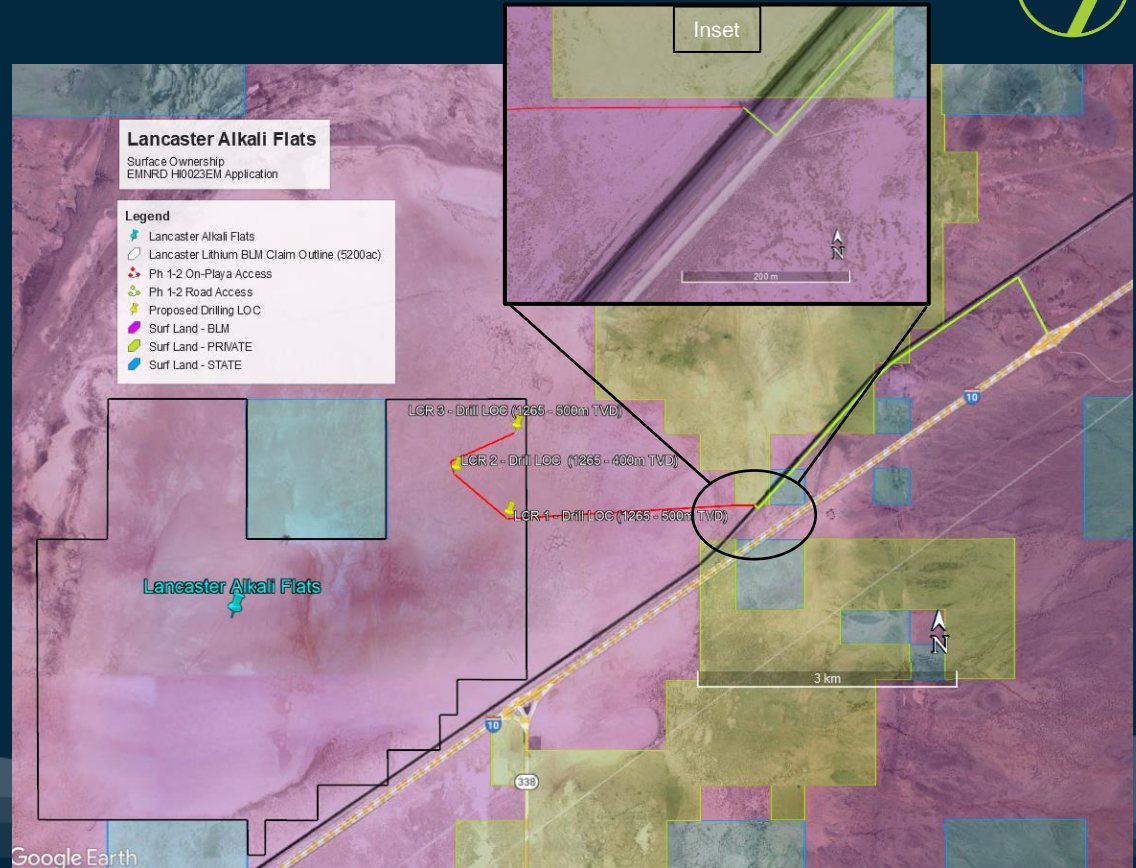
Access to claims is over public roads

- *Interstate I-10*
- *Wildcat Mountain Road*

Access off highway (on playa) is exclusively on BLM lands

No private land is crossed or accessed (see inset)

All care will be taken to minimize disturbance/rutting etc. Portions of path between Drill Locations follows existing trails



Question 2 – Surface Land Ownership for Access Route



Question

Under section 2 clarify surface land ownership for access route

- Provide a statement of the basis on which you are allowed to enter/access properties

Answer

Lancaster has existing BLM placer claims, through an option agreement with Majuba Mining, for the Alkali Flats Playa Permit Area

- NM105297541 - NM105297571 (31) / NM105788152 - NM105788187 (36) / NM105810533 - NM105810694 (162) / NM105818469 - NM105818480 (12) / NM105830503 - NM105830521 (19)

Additionally, on Sept. 26, 2023 Lancaster filed a supporting Plan of Operations application to the BLM in support of the EMNRD drilling application. We are actively working with the BLM on approval of the PoO.

No other off-highway private, federal, or state lands are to be crossed or utilized for access to the permit area for drilling operations other than what is shown on the previous maps.

Question 3 – Drillhole Locations



Question

Indicate may change locations of drill locations

- Confirm any changes to the 3 proposed locations

Answer

*There are currently no proposed changes to the current proposed drilling locations. However, Lancaster commits to confirming drilling GPS coordinates by **October 24, 2023** to aid in the approval of this application.*