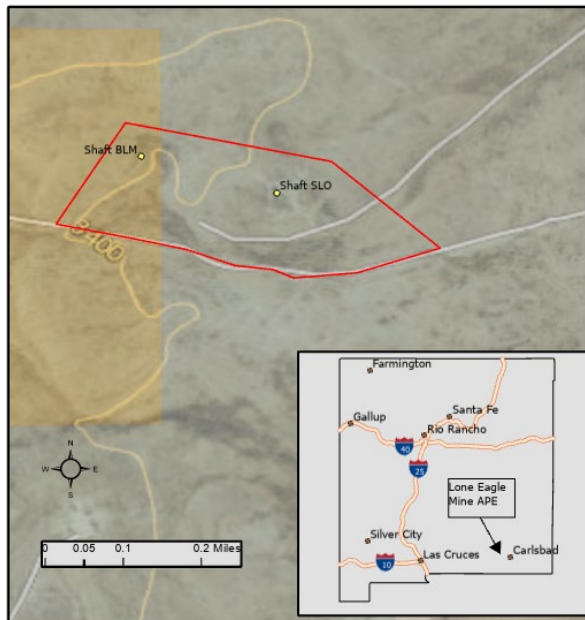


Lone Eagle Mine Safeguarding Project

The Abandoned Mine Land Program is proposing to implement mine safeguarding measures at the former Lone Eagle Mine. Safeguarding measures are needed for the safety of anyone accessing the area of the mine. Environmental reviews of the project including cultural and biological resources evaluations, a bat survey and assessment, and tribal consultation have been completed as part of supporting documentation for the preparation of a Categorical Exclusion (CE).

Project

The proposed project area is located approximately 9 miles northwest of Carlsbad, in Eddy County, New Mexico, on State Land Office (SLO) land as well as land administered by the Bureau of Land Management. The proposed project includes the safeguarding of two (2) mine shafts by backfilling one shaft and highwall feature on SLO land and the installation of an engineered bat-compatible closure of the other shaft on BLM land. The Area of Potential Effects (APE) is based on proposed project activities and encompasses approximately 31 acres.



You are invited to review the draft CE and provide comments on the project at the following link:
<https://www.emnrd.nm.gov/mmd/public-notices/> Public comments will be accepted until September 6, 2024. You may contact James Hollen at james.hollen@emnrd.nm.gov or (505) 231-8332 with questions, or for more information.

Thank you for your interest.

Abandoned Mine Land Program