

SAMPLING AND ANALYSIS PLAN

Section 13.0

Prior Mining Operations

May 2009

Prepared for Roca Honda Resources, LLC
4001 Office Court, Suite 102, Santa Fe, NM 87507

Contents

13.0	Prior Mining Operations	13-1
13.1	Introduction and Background.....	13-1
13.2	Sampling Objectives	13-1
13.3	List of Data to be Collected.....	13-1
13.4	Methods of Collection.....	13-1
13.5	Parameters to be Analyzed.....	13-4
13.6	Maps Providing Sample Locations	13-4
13.7	Sampling Frequency.....	13-4
13.8	Laboratory and Field Quality Assurance Plan	13-4
13.9	Brief Discussion Supporting Proposal	13-4
13.10	References.....	13-4

Figures

Figure 13-1.	Topographic Base Map Showing Prior Mining Operations (1:32,000 – Draft) ...	13-2
Figure 13-2.	Aerial Photo Base Map Showing Prior Mining Operations (1:32,000) – Draft....	13-3

13.0 Prior Mining Operations

13.1 Introduction and Background

No previous mining operations exist on the proposed permit area which may have affected the permit area. There were, however, more than 400 historic exploration boreholes drilled from the late 1960s to the early 1980s in various locations of the permit area as identified in Figure 13-1. Figure 13-2 shows the density of drilling, particularly in sections 9 and 10 of the permit area. Additionally, some of the property immediately surrounding the permit area contains exploration drill holes to varying degrees. However, RHR has no knowledge of particular drilling locations in those Sections. Field inspections of the area conducted in conjunction with other field activities revealed occasional stand-pipe and other markings that may identify possible drill-hole locations but cannot be confirmed as such.

The USGS mapped a network of old drill roads present mainly in Sections 9 and 10 that accessed the drill sites, most of which have naturally re-vegetated. The Section 17 Lee Ranch shop facilities can also be seen in Figures 13-1 and 13-2. This is the location of a mine shaft that was constructed in the late 1970s and early 1980s but was never finished. Excavation of the shaft stopped before it reached the Westwater Formation, i.e., the ore bearing formation. Additionally, as identified in Figure 13-1, approximately 3 miles southeast of the permit area is the Rio Grande Resources (aka, Gulf Mt. Taylor underground uranium mine) facility. This mine has been on standby since the early 1990s. Also, shown on Figure 13-1 at a location southwest of the permit area approximately four miles and across the San Mateo Creek, is the San Mateo underground uranium mine. This mine has not been in operation for many years. The Baseline Monitoring Program is designed, in part, to take these activities into account.

None of the activities are likely to have affected the RHR permit area but have been included herein at the request of the agency for clarity.

13.2 Sampling Objectives

The prior mining operations will not be sampled or otherwise characterized per se. The purpose and objective of the SAP is to provide a description of the means by which baseline data will be collected to characterize and establish background conditions inclusive of contributions, if any, in and around the Roca Honda permit area prior to mining.

13.3 List of Data to be Collected

The list of data to be collected for each environmental medium and/or subject of interest is discussed in each of the respective sections of this SAP.

13.4 Methods of Collection

The methods of collection of the data for each environmental medium and/or subject of interest, are discussed in each of the respective sections of this SAP.

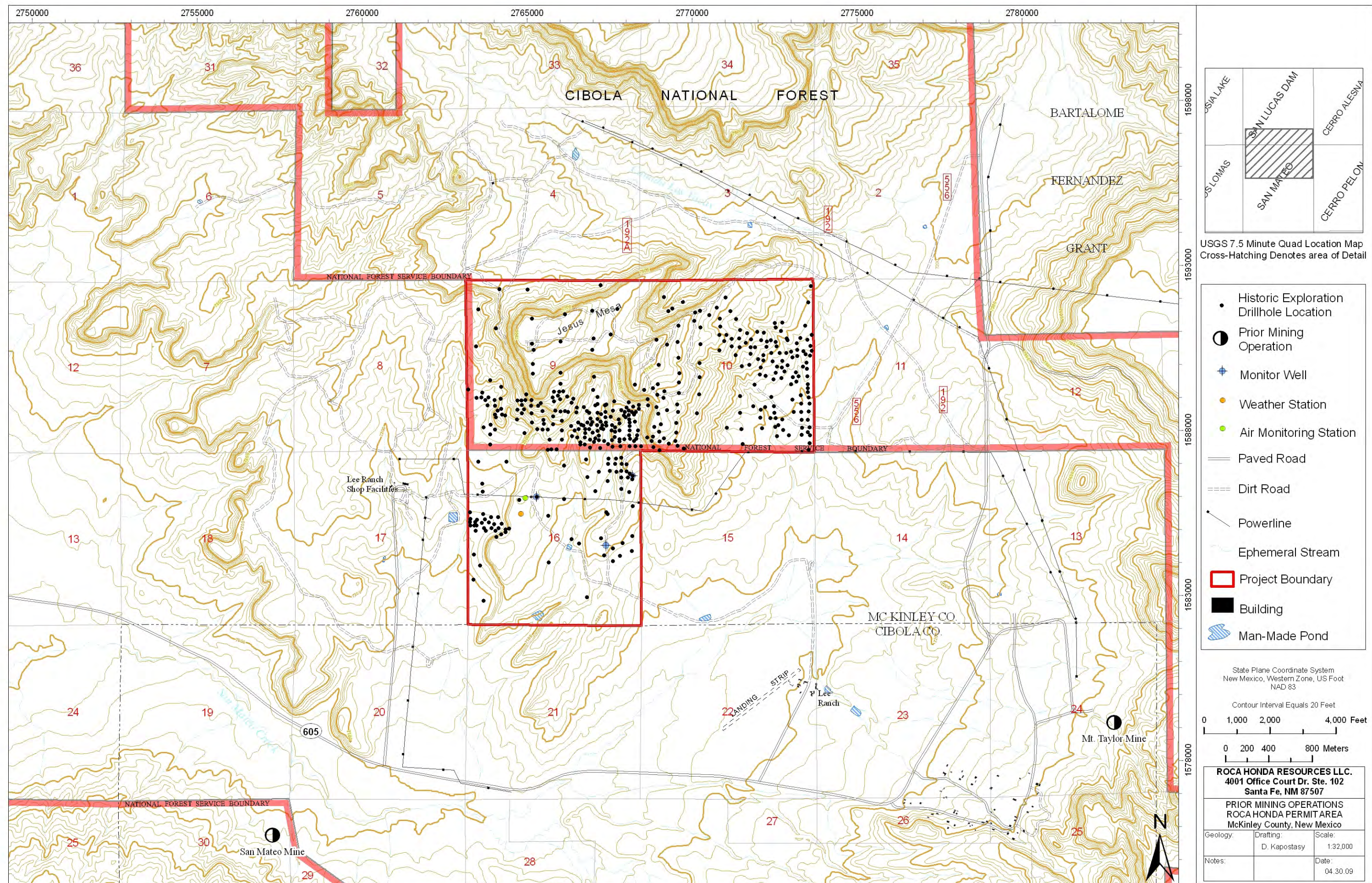


Figure 13-1. Topographic Base Map Showing Prior Mining Operations (1:32,000 – Draft)

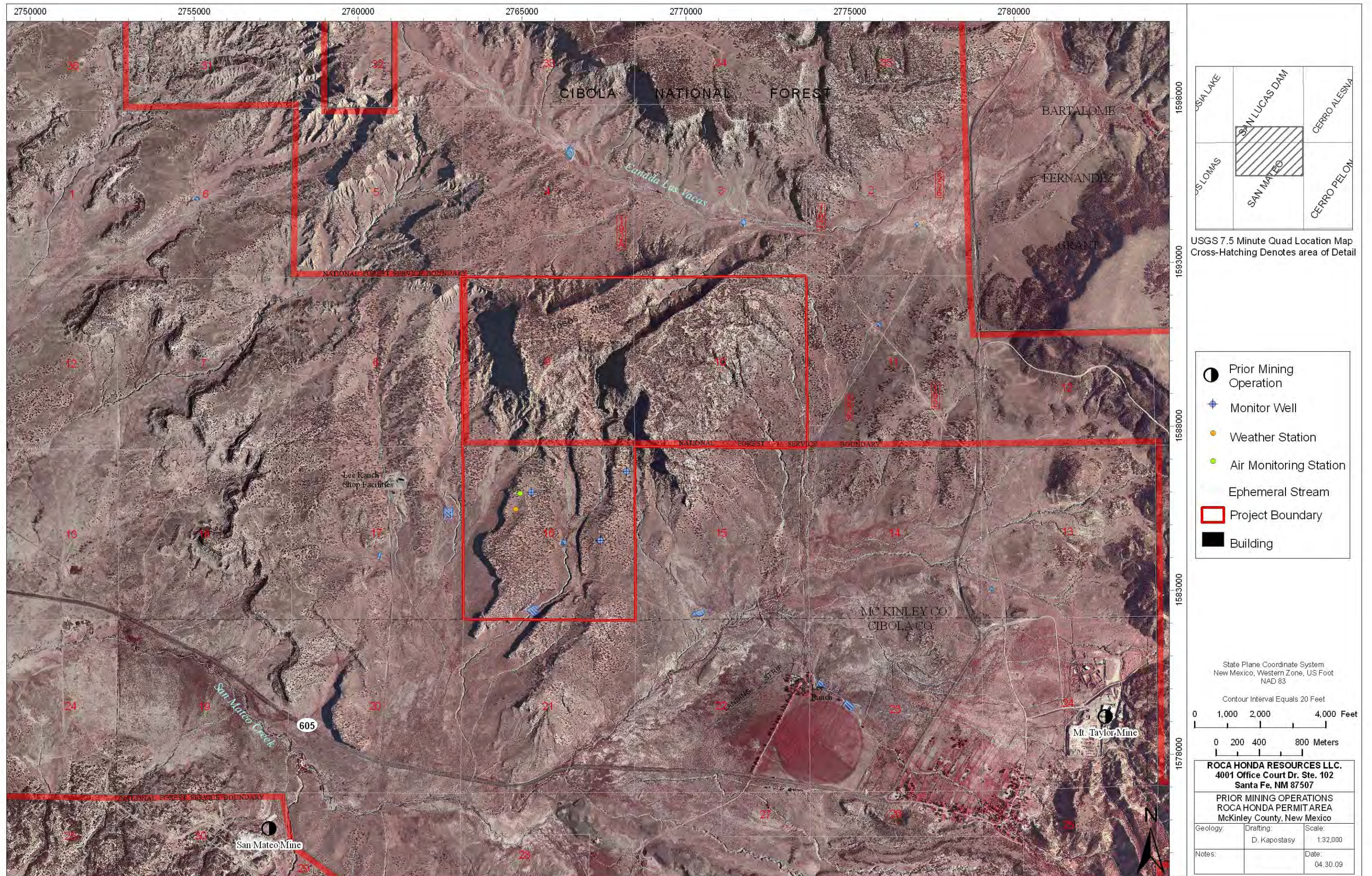


Figure 13-2. Aerial Photo Base Map Showing Prior Mining Operations (1:32,000) – Draft

13.5 Parameters to be Analyzed

The parameters to be analyzed for each environmental medium and/or subject of interest are discussed in each of the respective sections of this SAP.

13.6 Maps Providing Sample Locations

The maps providing sampling locations for each environmental medium and/or subject of interest are discussed in each of the respective sections of this SAP.

13.7 Sampling Frequency

The sampling frequency for each environmental medium and/or subject of interest is discussed in each of the respective sections of this SAP.

13.8 Laboratory and Field Quality Assurance Plan

The laboratory and field quality assurance plans for each environmental medium and/or subject of interest are discussed in each of the respective sections of this SAP.

13.9 Brief Discussion Supporting Proposal

None of the prior mining operations are likely to have affected the RHR permit area. This section 13.0 has been included herein at the request of the agency for clarity.

The prior mining operations will not be sampled or otherwise characterized per se. The purpose and objective of the SAP is to provide a description of the means by which baseline data will be collected to characterize and establish background conditions inclusive of contributions, if any, in and around the Roca Honda permit area prior to mining.

13.10 References

None