

Velasquez Environmental Management Services, Inc.

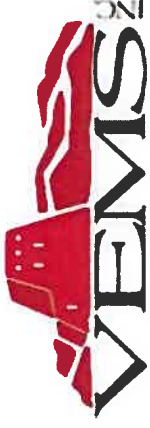
- **NMCC Copper Flat Mine Operations Permit**
- **Overview of Permit Application Package (PAP) & Mining Operations & Reclamation Plan (MORP)**





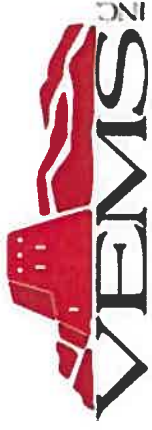
Velasquez Environmental Management Services, Inc.

- **Mining Act Objective (1910.6.6)**
 - **Establish regulations designed to ensure proper reclamation through permitting for operations**
 - **Copper Flat – 1st “New Mine” permit under the Mining Act since its promulgation in 1993 (25 years)**
- **The permitting process initiated in Sept. 2010 (Sampling and Analysis Plan (SAP) leading to the Baseline Data Report(BDR)**
 - **Generation of 12 months of baseline data after SAP approval**
 - ✓ **Air quality, meteorology, surface & ground water quality and quantity, geology, hydrology, wildlife, vegetation, soils, etc.**



Velasquez Environmental Management Services, Inc.

- **The initial Mining Operations and Reclamation Plan was initially submitted MMD in July 2012**
- **Having updated it several times since then**
 - **Reflecting changes to designs, the NMED Copper Rule requirements & other plan refinements in response to agency comments and request for additional information.**
 - **Application has undergone significant technical review and modification**
 - **NMCC has responded to a significant no. of RFI's from MMD, NMED, NMDG&F, NMOSE, NMSHPO, BLM, USFW over the years**
 - **In addition, Parallel permitting processes have been ongoing, e.g., BLM's EIS and MPO review, NMED's DP review, OSE water rights and dam safety activities, and other related permit actions**



Velasquez Environmental Management Services, Inc.

- **July 12, 2018 the MMD Determined NMCCs permit application “technically approvable”**
- **And here we are, today providing you, the public, with an opportunity, as provided by the Mining Act regulations, to comment on the first permit to be issued for a new mine.**



Velasquez Environmental Management Services, Inc.

Copper Flat Mine

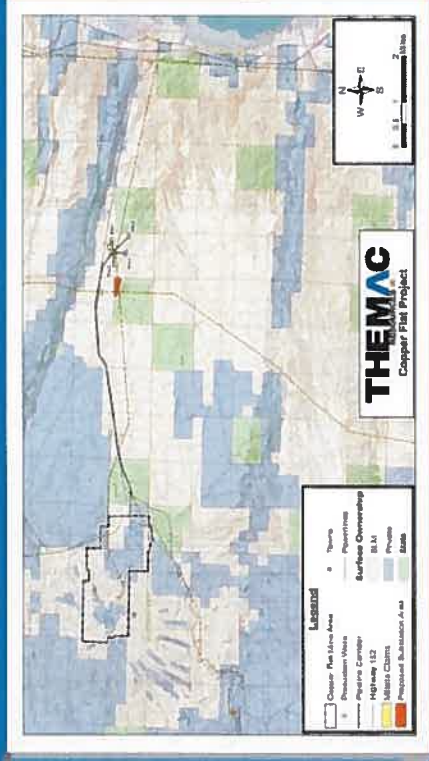


NEW MEXICO COPPER CORPORATION

COPPER FLAT MINE LOCATION



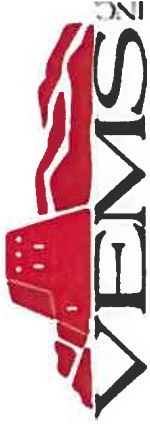
- LOCATED 20 MILES SOUTH OF TRUTH OR CONSEQUENCES AND 4 MILES EAST OF HILLSBORO
- FOUNDATIONS
- POWERLINES
- FLOOD CONTROL (GREYBACK ARROYO DIVERSION)
- WATER WELLS, PIPELINES
- ACCESS ROADS





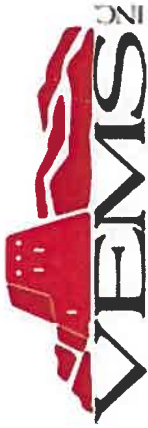
Velasquez Environmental Management Services, Inc.

- **Requirements for PAP set out in 19.10.6.602 NMAC**
 - **Administrative completeness review followed by technical review**
- **Content of the PAP is very extensive & complete**
 - **Detailed information about the applicant**
 - **Baseline Data Report (BDR)**
 - **Listing of all other permits required**
 - **Detailed description of proposed mining operations and reclamation plans**
 - **Detailed description of MORP**

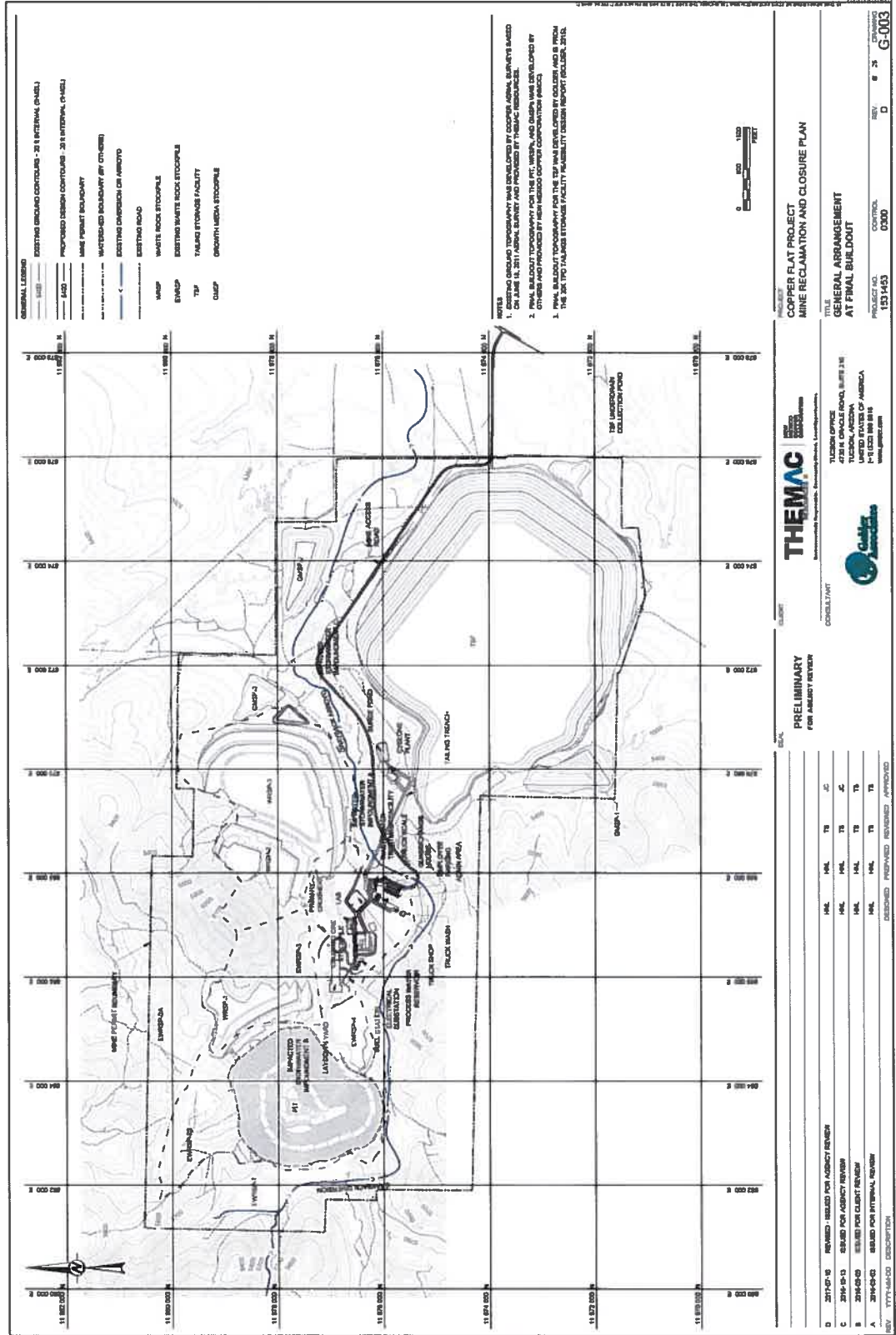


Velasquez Environmental Management Services, Inc.

- **Performance & reclamation stds. & requirements, 19.10.6.6.603 NMAC set forth, including for example;**
 - **Permit area reclaimed to self-sustaining ecosystem**
 - **Contemporaneous reclamation to the extent practicable**
 - **Wildlife & habitat protection requirements during operation & after reclamation to minimize impacts**
 - **Inventory and protection of cultural resources**
 - **Plan and operate to minimize change and result in a hydrologic balance similar to pre-mining conditions and ensure protection of water resources**
 - **Site stabilization & configuration to minimize future impact to the environment and protect air and water resources**
 - **Erosion control through land shaping, water diversion, mulching, rip-rap protection and revegetation**



Velasquez Environmental Management Services, Inc.



- GENERAL LEGEND**
- EXISTING BOUNDARY CONTOURS - 25 FT INTERVAL (DASH)
 - PROPOSED DESIGN CONTOURS - 25 FT INTERVAL (SOLID)
 - MINI PERMIT BOUNDARY
 - WATERBOD BOUNDARY (IF OTHER)
 - EXISTING DRAINAGE OR ARROYO
 - EXISTING ROAD
 - WASTE ROCK STOCKPILE
 - EXISTING WASTE ROCK STOCKPILES
 - TALENS STORAGE FACILITY
 - TALENS MEDIA STOCKPILE

NOTES

- EXISTING BOUNDARY TOPOGRAPHY WAS DEVELOPED BY COOPER SURVEY SERVICES ON JUNE 15, 2011 AERIAL SURVEY AND PROVIDED BY THEMAC RESOURCES.
- FINAL BULDOZER TOPOGRAPHY FOR THE PIT, WASTE, AND DUMP WERE DEVELOPED BY THEMAC RESOURCES AND PROVIDED BY THEMAC RESOURCES.
- THIS PLAN IS A PRELIMINARY DESIGN REPORT BOLDER, 2012.
- THE 2012 TALENS STORAGE FACILITY ASSEMBLY DESIGN REPORT BOLDER, 2012.

CLIENT
THEMAC
 TALENS OFFICE
 4725 N. ORACLE ROAD, SUITE 210
 TUCSON, ARIZONA
 85718
 P: 520.288.8812
 www.themac.com

TITLE
 GENERAL ARRANGEMENT
 AT FINAL BULDOZER

PROJECT NO. 1531453
CONTROL 0300
REV. D
DATE 6/3/12
SCALE G-003

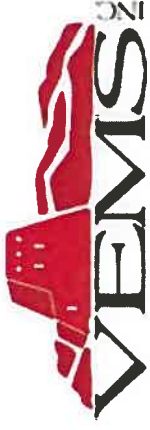
PRELIMINARY FOR AGENCY REVIEW

| REV. | DATE | DESCRIPTION | DESIGNED | PREPARED | REVIEWED | APPROVED |
|------|------------|----------------------------|----------|----------|----------|----------|
| D | 2012-07-15 | REVISED FOR AGENCY REVIEW | MHL | MHL | TR | JC |
| C | 2012-05-13 | ISSUED FOR AGENCY REVIEW | MHL | MHL | TR | JC |
| B | 2012-05-09 | ISSUED FOR CLIENT REVIEW | MHL | MHL | TR | JC |
| A | 2012-04-02 | ISSUED FOR INTERNAL REVIEW | MHL | MHL | TR | TR |



Velasquez Environmental Management Services, Inc.

- **Mine Operations & Reclamation Plan – 19.10.6.602.D(15)**
 - **Type & methods of mining – open pit located at west side of mine property primarily on private ground owned by NMCC**
 - **Waste rock stockpiles (WRSPs) - located east of the pit on low-permeability andesite bedrock**
 - **Ore processing - contained and lined facilities utilizing existing foundations, located east of the open pit**
 - **Tailings Storage Facility (TSF) - lined HDPE storage located southeast of the process facility, with a solution underdrain/collection & process water recycling system**
 - **Growth Media Stockpiles – soils salvaged from WRSP alluvial materials & TSF**



Velasquez Environmental Management Services, Inc.

- **Mine Operations Plan (Cont.)**
 - **Ancillary & off-site facilities – including roads, admin. areas, process water well field & pipeline**

- **NMCC operations must meet the requirements of all other state and federal agencies including;**
 - ✓ **TSF dam design safety requirements of the NMOSE**
 - ✓ **NMED environmental protection regulations**
 - ✓ **Federal NEPA requirements**
 - ✓ **USFW and BLM requirements**



Velasquez Environmental Management Services, Inc.

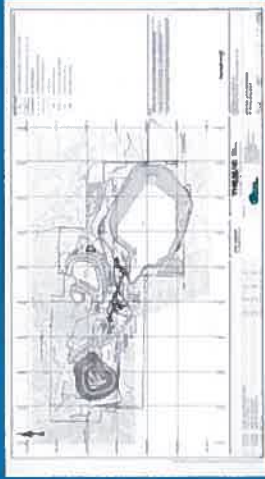
Copper Flat Mine



NEW MEXICO COPPER CORPORATION

COPPER FLAT MINE—AT BUILD OUT

- 2 Years of Development
- Mine Pit
- Plant Site
- WRSPS
- TSF
- GMSPS
- EWRSP Reclamation



- 12 Years of Operation
- 30,000 TPD Processing
- 125 Acre Plant Site
- 166 Acre Mine Pit
- 220 Acres WRSPS
- 604 Acres TSF

South to North Perspective



East to West Perspective





Velasquez Environmental Management Services, Inc.

- **In conformance with 19.10.6.602.D(15)(g)**
 - **Mine facilities, including WRSPs, are designed to operate for closure**
 - **During operations certain existing WRSPs will be reclaimed.**
 - **Growth media will be salvaged ahead of construction & stored for reuse at reclamation**
 - **Shortly after mining ends, the open pit will be rapid-filled with clean water**
 - **Waste rock stockpiles & TSF regraded, re-contoured, covered with growth media & revegetated**
 - **Process water from the TSF will be evaporated, the surface regraded, covered, and revegetated**
 - **Buildings, pipelines, and other surface structures will be removed**
 - **Concrete foundations will be broken and removed or buried, as appropriate**
 - **Trench liners will be removed, pond liners will be ripped and folded over, and pond excavations will be backfilled & revegetated**
 - **Ancillary facilities areas will be reclaimed**



Velasquez Environmental Management Services, Inc.

Copper Flat Mine



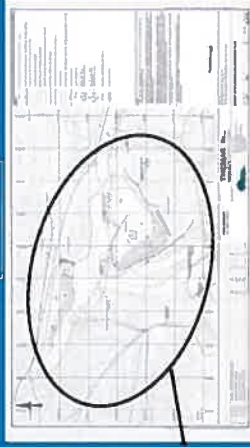
EXISTING WRSP RECLAMATION

- Performed during site development phase
- Regraded
- Recontoured
- 3 ft of growth media
- Revegetated
- Provide test plot area to evaluate future vegetation success
- EWRSP 2a & 3 to be reclaimed at mine closure

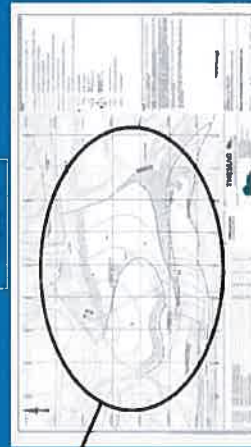


Reclaimed at mine closure

EWRSP 2b

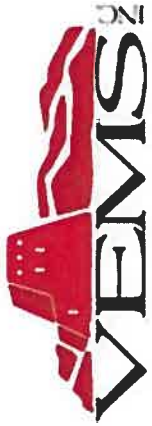


EWRSP 4

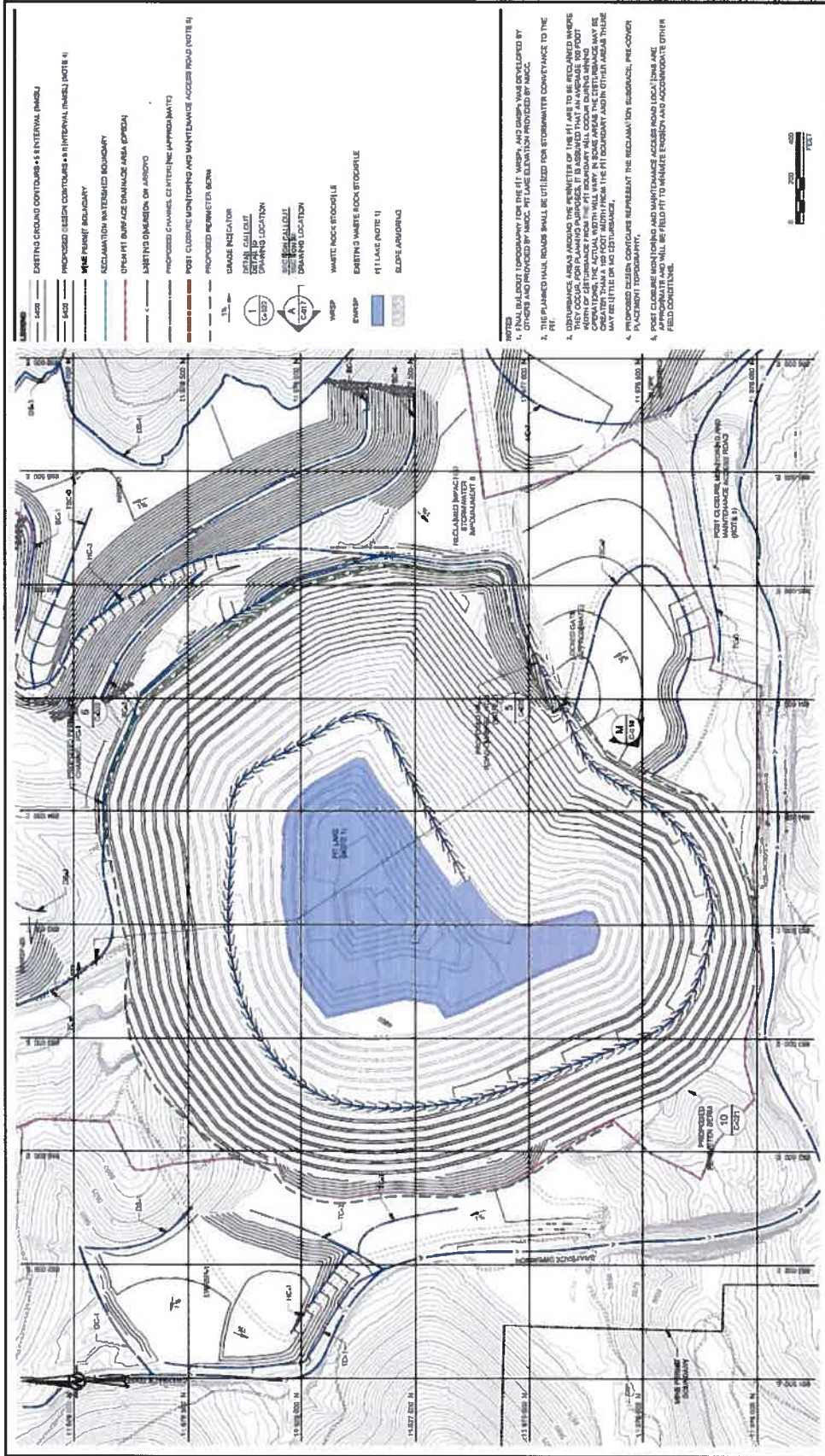


EWRSP 1





Velasquez Environmental Management Services, Inc.



- EXISTING ROAD CONTOURS - 5' INTERVAL (MSD)
- PROPOSED DESIGN CONTOURS - 5' INTERVAL (MSD) (NOTE 4)
- WASTE PILE BOUNDARY
- RECLAMATION WATERED BOUNDARY
- OPEN PIT SURFACE DRAINAGE AREA (PDA)
- WASTING DIMENSION ON JORDO
- PROPOSED CHANNELS, CATCHES AND APPROXIMATE
- POST CLOSURE MONITORING AND MAINTENANCE ACCESS ROAD (NOTE 4)
- PROPOSED PERIMETER BURN
- GRADE INDICATOR
- DESIGN DRAINAGE
- DRAINAGE LOCATION
- WASTE PILE
- WASTE PILE DRAINAGE LOCATION
- WASTE ROCK STOCKPILE
- EMERGENCY WASTE ROCK STOCKPILE
- PIT LAKE (NOTE 1)
- SLOPE ANGLE

NOTES

- FINAL BUILT-OUT TOPOGRAPHY FOR THE PIT, WASTES, AND DAMS WAS DEVELOPED BY OTHERS AND PROVIDED BY MRCC. PIT LAKE ELEVATION PROVIDED BY MRCC.
- THE PLANNED HULL ROAD SHALL BE UTILIZED FOR STORMWATER CONVEYANCE TO THE RECLAMATION AREA UNLESS THE SLOPE OF THE PIT LAKE TO BE RECLAIMED WASTES THEY OCCUR FOR PLANNED PURPOSES. IT IS ASSUMED THAT AN AVERAGE 100 FOOT RADIUS OF DISTURBANCE FROM THE PIT BOUNDARY WILL OCCUR DURING LIFE OF THE PIT. THIS DISTURBANCE SHALL BE LIMITED TO A 100 FOOT WIDTH FROM THE PIT BOUNDARY AND OTHER AREAS THERE MAY BE LITTLE OR NO DISTURBANCE.
- PROPOSED DESIGN CONTOURS REPRESENT THE RECLAMATION SUBGRADE, PRE-COVER PLACEMENT TOPOGRAPHY.
- POST CLOSURE MONITORING AND MAINTENANCE ACCESS ROAD LOCATIONS AND PLACEMENT SHALL BE SUBJECT TO AVAILABLE EROSION AND APPROPRIATE OTHER FIELD CONDITIONS.



PROJECT: **COPPER FLAT PROJECT MINE RECLAMATION AND CLOSURE PERMIT**

TITLE: **PIT RECLAMATION AND DRAINAGE PLAN**

DATE: 10/18/20

SCALE: D

PROJECT NO: 1631453

CONTRACT NO: 0300

DATE: 10/18/20

SCALE: D

THEMAC
 Environmental Remediation, Remediation, and Construction

PROJECT: **COPPER FLAT**

CLIENT: **THEMAC OFFICE**
 4720 N. ORACLE ROAD, SUITE 210
 TUCSON, ARIZONA 85718
 (520) 883-8919
 www.themac.com

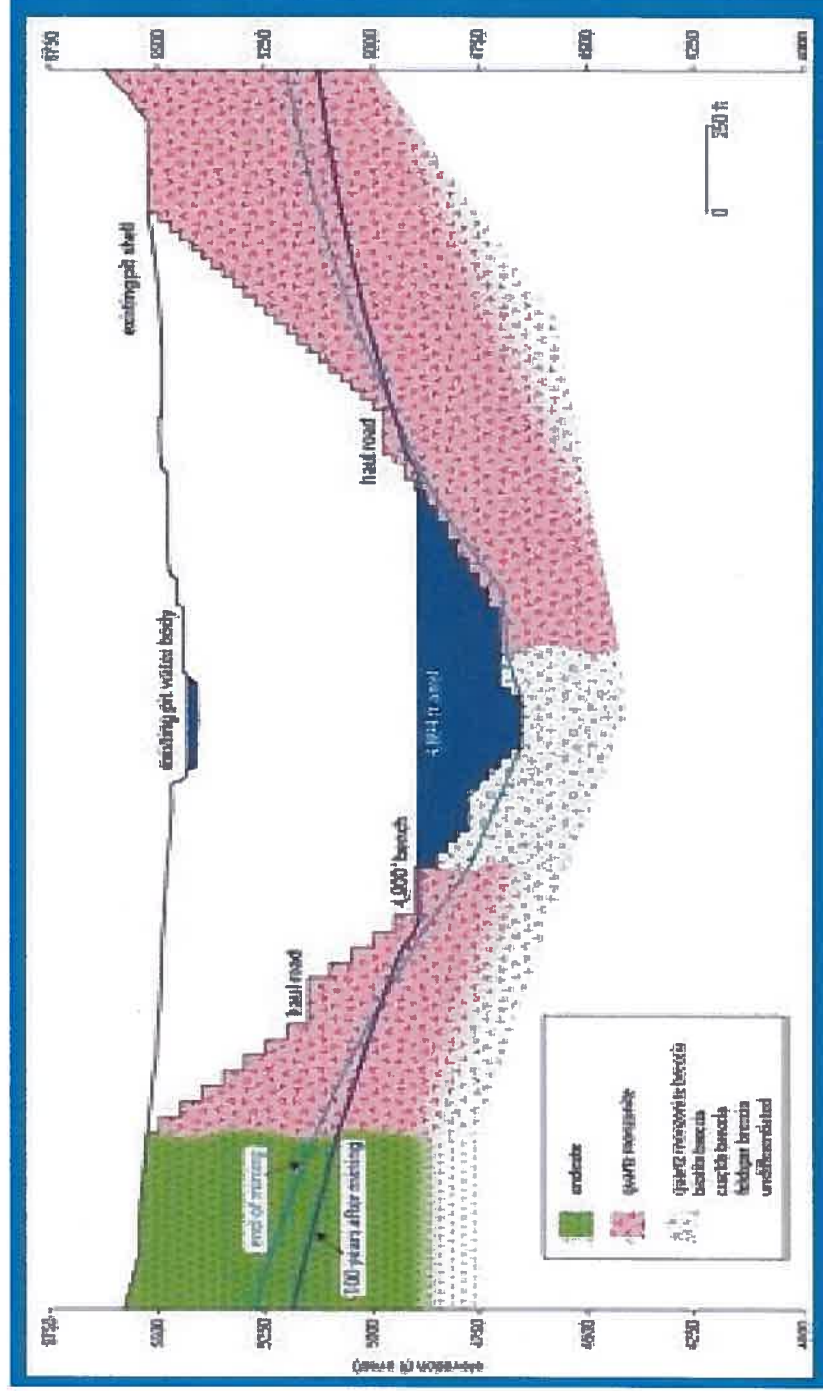
PRELIMINARY FOR AGENCY REVIEW

| NO. | DATE | DESCRIPTION | DESIGNED | PREPARED | REVIEWED | APPROVED |
|-----|------------|------------------------------------|----------|----------|----------|----------|
| E | 2017-07-28 | REVISED - ISSUED FOR AGENCY REVIEW | MAL | MAL | TS | JC |
| D | 2017-07-03 | REVISED - ISSUED FOR AGENCY REVIEW | MAL | MAL | TS | JC |
| C | 2016-12-14 | ISSUED FOR AGENCY REVIEW | MAL | MAL | TS | JC |
| B | 2016-05-07 | ISSUED FOR CLIENT REVIEW | MAL | MAL | TS | IB |
| A | 2016-02-02 | ISSUED FOR INTERNAL REVIEW | MAL | MAL | TS | IB |



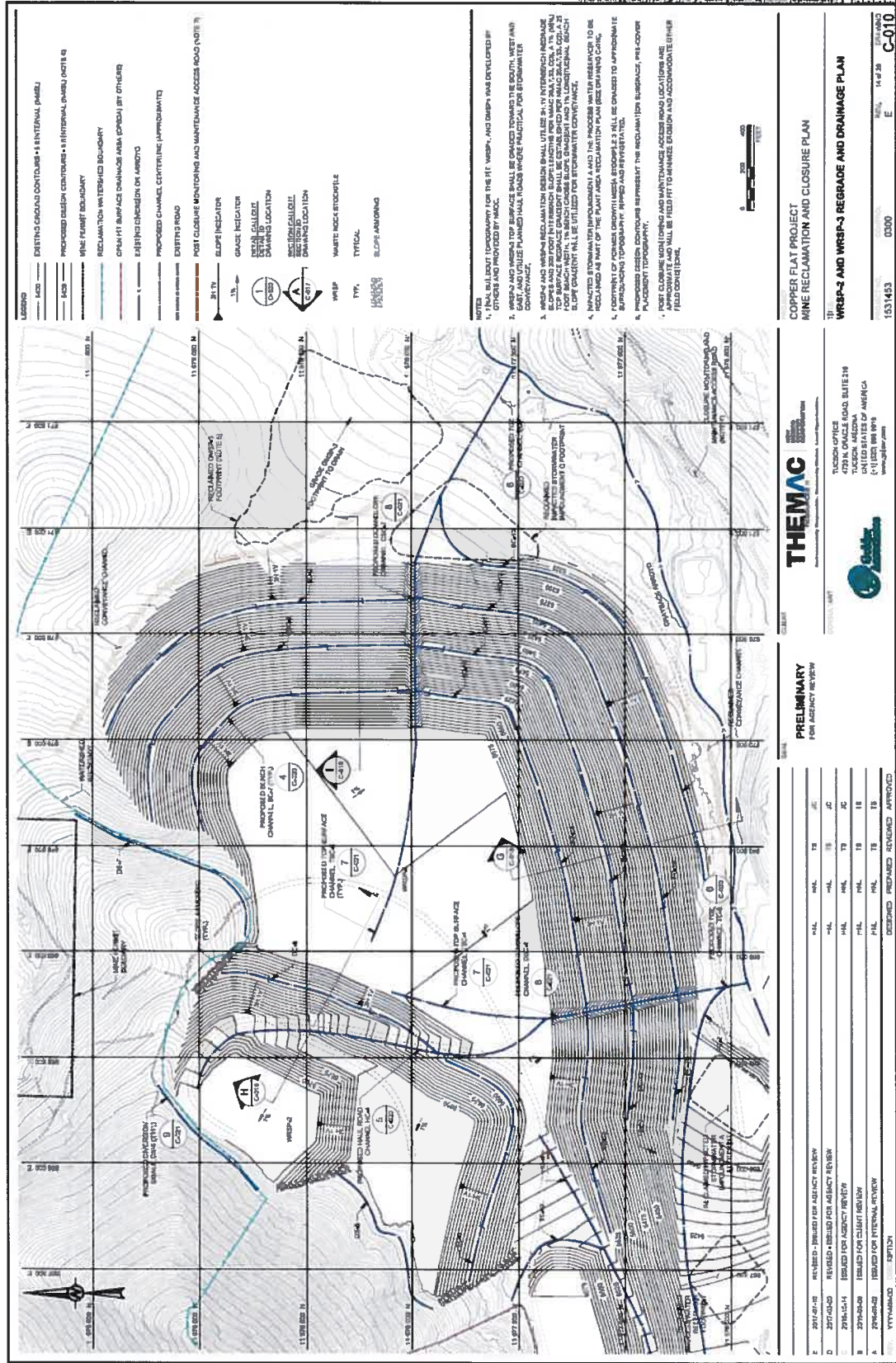
Velasquez Environmental Management Services, Inc.

Hydrologic Sink/Similarity



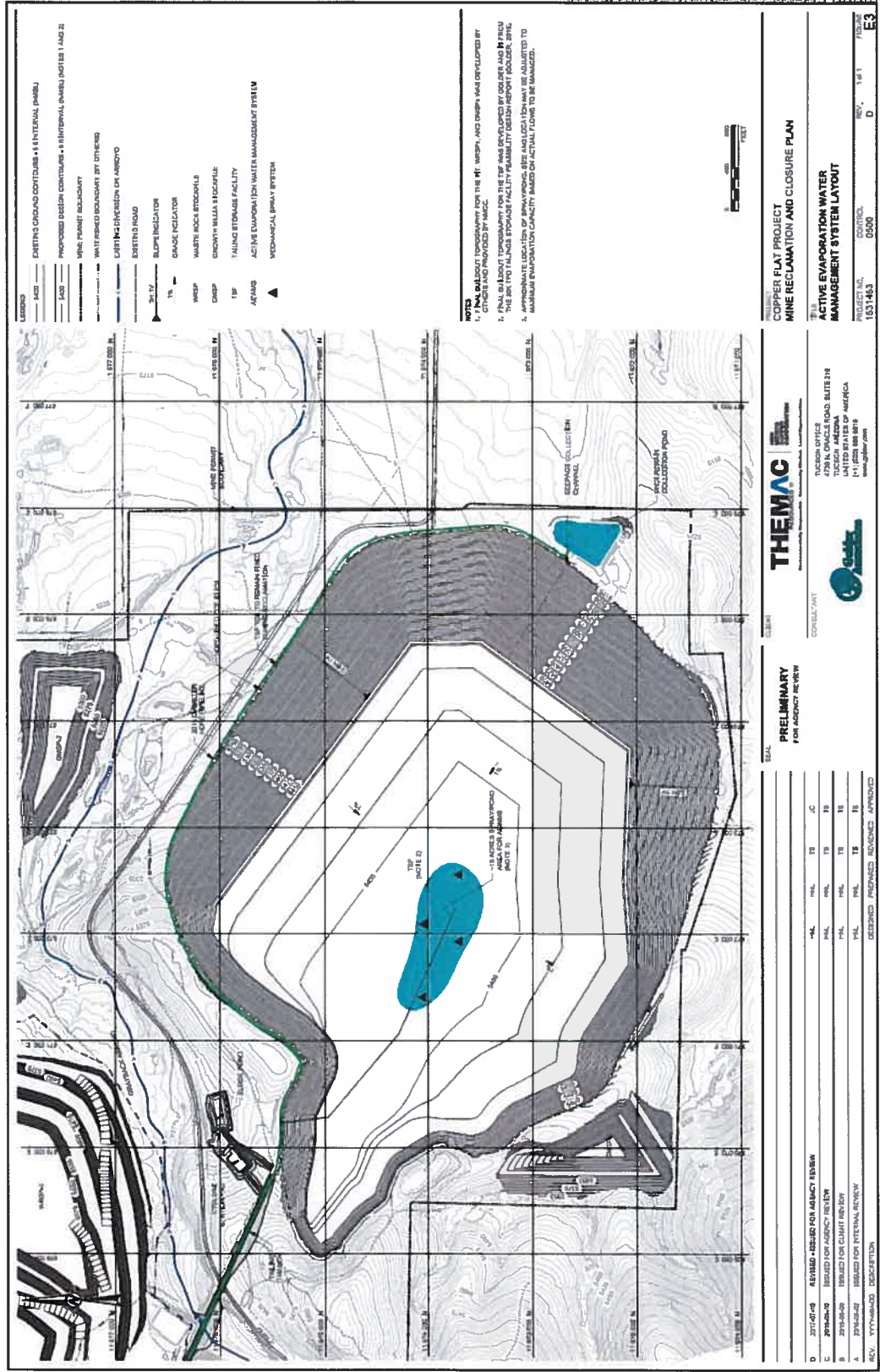


Velasquez Environmental Management Services, Inc.





Velasquez Environmental Management Services, Inc.



NOTES:
 1. FINAL SUBJECT TOPOGRAPHY FOR THE TIP, WETP, AND DAMP WAS DEVELOPED BY CLIENTS AND PROVIDED BY MDEC.
 2. FINAL SUBJECT TOPOGRAPHY FOR THE TIP WAS DEVELOPED BY GOLDER AND BY FICD.
 3. THE SITE TWO TAILING STORAGE FACILITY FEASIBILITY DESIGN REPORT (DOUGHER, 2016) APPROXIMATE LOCATION OF BRINEWATERS ARE LOCATED IN RED AND ARE SUBJECT TO CHANGE PER FUTURE CAPACITY BASED ON ACTUAL TONNES TO BE RECLAIMED.

**COPPER FLAT PROJECT
 MINE RECLAMATION AND CLOSURE PLAN**

**THE ACTIVE EVAPORATION WATER
 MANAGEMENT SYSTEM LAYOUT**

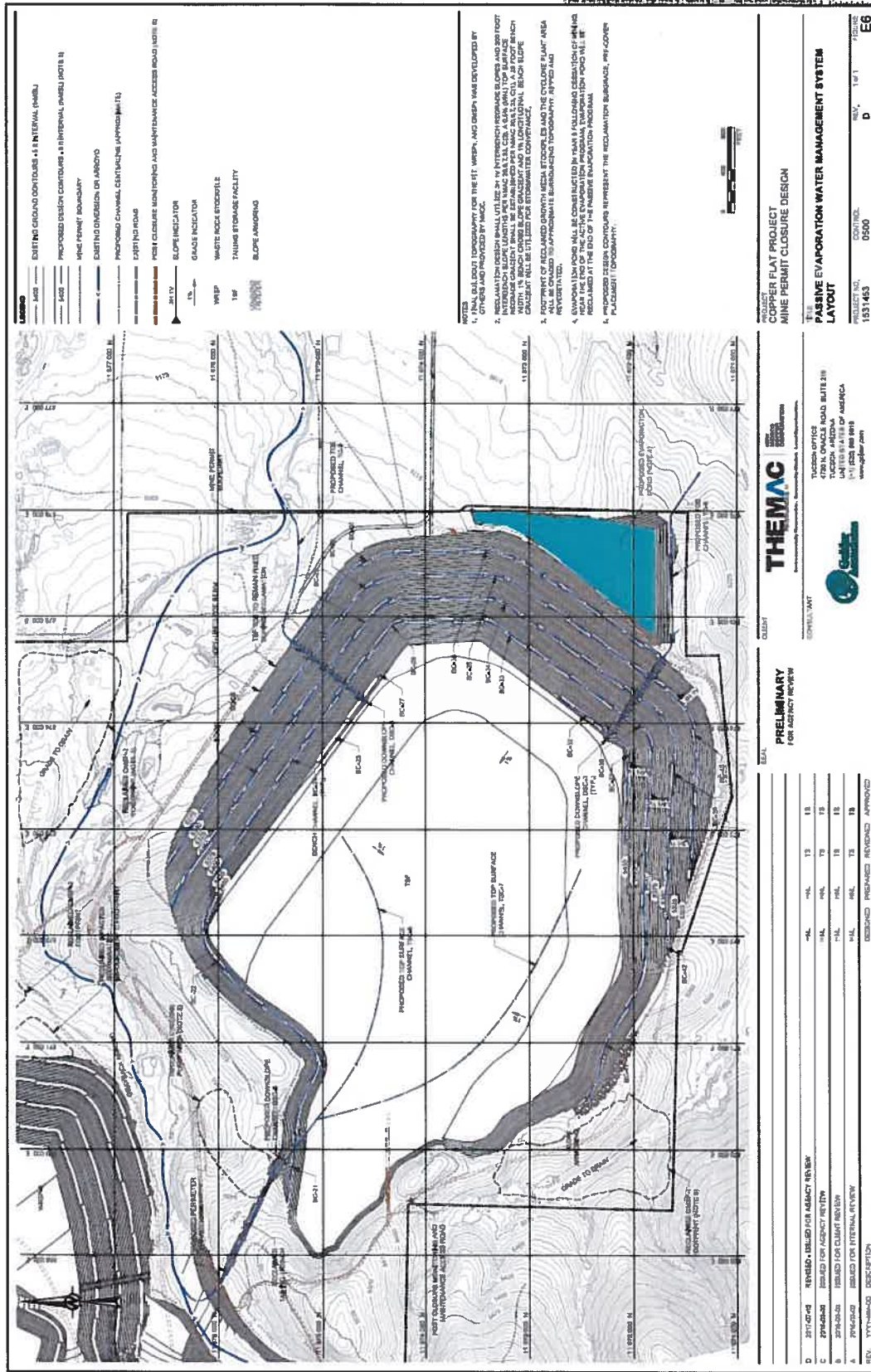
THEMAC
 CONSULTANTS
 1700 N. CHANDLER ROAD, SUITE 118
 TUCSON, ARIZONA
 (520) 795-1818
 www.themac.com

**PRELIMINARY
 FOR AGENCY REVIEW**

| REV. | DATE | DESCRIPTION | DESIGNED | DRAWN | CHECKED | APPROVED |
|------|------------|------------------------------------|----------|-------|---------|----------|
| D | 2017-07-10 | REVISED - ISSUED FOR AGENCY REVIEW | MAL | MAL | TS | JC |
| C | 2016-06-09 | ISSUED FOR AGENCY REVIEW | MAL | MAL | TS | TS |
| B | 2016-06-09 | ISSUED FOR CLIENT REVIEW | MAL | MAL | TS | TS |
| A | 2016-06-09 | ISSUED FOR INTERNAL REVIEW | MAL | MAL | TS | TS |
| REV. | 2/17/2016 | DESCRIPTION | DESIGNED | DRAWN | CHECKED | APPROVED |



Velasquez Environmental Management Services, Inc.





Velasquez Environmental Management Services, Inc.



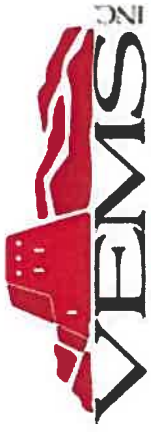
THEMAC
 Environmental Management Services, Inc. • 4750 N. GARDNER ROAD, SUITE 218
 TUCSON, ARIZONA 85745 • (520) 796-1111 • www.themac.com

PROJECT: COPPER FLAT PROJECT
MINI: MINE RECLAMATION AND CLOSURE PLAN
TITLE: PLANT AREA RECLAMATION AND DRAINAGE PLAN

DATE: 11/13/2014
SCALE: AS SHOWN
PROJECT NO.: 1031403
DATE: 11/13/2014
BY: [Signature]
CHKD BY: [Signature]

REVISIONS:

| NO. | DATE | DESCRIPTION | BY | CHKD BY |
|-----|------------|---------------------------|----|---------|
| 1 | 11/13/2014 | ISSUED FOR AGENCY REVIEW | HL | HL |
| 2 | 11/13/2014 | REVISED FOR AGENCY REVIEW | HL | HL |
| 3 | 11/13/2014 | ISSUED FOR AGENCY REVIEW | HL | HL |
| 4 | 11/13/2014 | ISSUED FOR AGENCY REVIEW | HL | HL |
| 5 | 11/13/2014 | ISSUED FOR AGENCY REVIEW | HL | HL |
| 6 | 11/13/2014 | ISSUED FOR AGENCY REVIEW | HL | HL |
| 7 | 11/13/2014 | ISSUED FOR AGENCY REVIEW | HL | HL |
| 8 | 11/13/2014 | ISSUED FOR AGENCY REVIEW | HL | HL |
| 9 | 11/13/2014 | ISSUED FOR AGENCY REVIEW | HL | HL |
| 10 | 11/13/2014 | ISSUED FOR AGENCY REVIEW | HL | HL |
| 11 | 11/13/2014 | ISSUED FOR AGENCY REVIEW | HL | HL |
| 12 | 11/13/2014 | ISSUED FOR AGENCY REVIEW | HL | HL |
| 13 | 11/13/2014 | ISSUED FOR AGENCY REVIEW | HL | HL |
| 14 | 11/13/2014 | ISSUED FOR AGENCY REVIEW | HL | HL |
| 15 | 11/13/2014 | ISSUED FOR AGENCY REVIEW | HL | HL |
| 16 | 11/13/2014 | ISSUED FOR AGENCY REVIEW | HL | HL |
| 17 | 11/13/2014 | ISSUED FOR AGENCY REVIEW | HL | HL |
| 18 | 11/13/2014 | ISSUED FOR AGENCY REVIEW | HL | HL |
| 19 | 11/13/2014 | ISSUED FOR AGENCY REVIEW | HL | HL |
| 20 | 11/13/2014 | ISSUED FOR AGENCY REVIEW | HL | HL |
| 21 | 11/13/2014 | ISSUED FOR AGENCY REVIEW | HL | HL |
| 22 | 11/13/2014 | ISSUED FOR AGENCY REVIEW | HL | HL |
| 23 | 11/13/2014 | ISSUED FOR AGENCY REVIEW | HL | HL |
| 24 | 11/13/2014 | ISSUED FOR AGENCY REVIEW | HL | HL |
| 25 | 11/13/2014 | ISSUED FOR AGENCY REVIEW | HL | HL |
| 26 | 11/13/2014 | ISSUED FOR AGENCY REVIEW | HL | HL |
| 27 | 11/13/2014 | ISSUED FOR AGENCY REVIEW | HL | HL |
| 28 | 11/13/2014 | ISSUED FOR AGENCY REVIEW | HL | HL |
| 29 | 11/13/2014 | ISSUED FOR AGENCY REVIEW | HL | HL |
| 30 | 11/13/2014 | ISSUED FOR AGENCY REVIEW | HL | HL |
| 31 | 11/13/2014 | ISSUED FOR AGENCY REVIEW | HL | HL |
| 32 | 11/13/2014 | ISSUED FOR AGENCY REVIEW | HL | HL |
| 33 | 11/13/2014 | ISSUED FOR AGENCY REVIEW | HL | HL |
| 34 | 11/13/2014 | ISSUED FOR AGENCY REVIEW | HL | HL |
| 35 | 11/13/2014 | ISSUED FOR AGENCY REVIEW | HL | HL |
| 36 | 11/13/2014 | ISSUED FOR AGENCY REVIEW | HL | HL |
| 37 | 11/13/2014 | ISSUED FOR AGENCY REVIEW | HL | HL |
| 38 | 11/13/2014 | ISSUED FOR AGENCY REVIEW | HL | HL |
| 39 | 11/13/2014 | ISSUED FOR AGENCY REVIEW | HL | HL |
| 40 | 11/13/2014 | ISSUED FOR AGENCY REVIEW | HL | HL |
| 41 | 11/13/2014 | ISSUED FOR AGENCY REVIEW | HL | HL |
| 42 | 11/13/2014 | ISSUED FOR AGENCY REVIEW | HL | HL |
| 43 | 11/13/2014 | ISSUED FOR AGENCY REVIEW | HL | HL |
| 44 | 11/13/2014 | ISSUED FOR AGENCY REVIEW | HL | HL |
| 45 | 11/13/2014 | ISSUED FOR AGENCY REVIEW | HL | HL |
| 46 | 11/13/2014 | ISSUED FOR AGENCY REVIEW | HL | HL |
| 47 | 11/13/2014 | ISSUED FOR AGENCY REVIEW | HL | HL |
| 48 | 11/13/2014 | ISSUED FOR AGENCY REVIEW | HL | HL |
| 49 | 11/13/2014 | ISSUED FOR AGENCY REVIEW | HL | HL |
| 50 | 11/13/2014 | ISSUED FOR AGENCY REVIEW | HL | HL |
| 51 | 11/13/2014 | ISSUED FOR AGENCY REVIEW | HL | HL |
| 52 | 11/13/2014 | ISSUED FOR AGENCY REVIEW | HL | HL |
| 53 | 11/13/2014 | ISSUED FOR AGENCY REVIEW | HL | HL |
| 54 | 11/13/2014 | ISSUED FOR AGENCY REVIEW | HL | HL |
| 55 | 11/13/2014 | ISSUED FOR AGENCY REVIEW | HL | HL |
| 56 | 11/13/2014 | ISSUED FOR AGENCY REVIEW | HL | HL |
| 57 | 11/13/2014 | ISSUED FOR AGENCY REVIEW | HL | HL |
| 58 | 11/13/2014 | ISSUED FOR AGENCY REVIEW | HL | HL |
| 59 | 11/13/2014 | ISSUED FOR AGENCY REVIEW | HL | HL |
| 60 | 11/13/2014 | ISSUED FOR AGENCY REVIEW | HL | HL |
| 61 | 11/13/2014 | ISSUED FOR AGENCY REVIEW | HL | HL |
| 62 | 11/13/2014 | ISSUED FOR AGENCY REVIEW | HL | HL |
| 63 | 11/13/2014 | ISSUED FOR AGENCY REVIEW | HL | HL |
| 64 | 11/13/2014 | ISSUED FOR AGENCY REVIEW | HL | HL |
| 65 | 11/13/2014 | ISSUED FOR AGENCY REVIEW | HL | HL |
| 66 | 11/13/2014 | ISSUED FOR AGENCY REVIEW | HL | HL |
| 67 | 11/13/2014 | ISSUED FOR AGENCY REVIEW | HL | HL |
| 68 | 11/13/2014 | ISSUED FOR AGENCY REVIEW | HL | HL |
| 69 | 11/13/2014 | ISSUED FOR AGENCY REVIEW | HL | HL |
| 70 | 11/13/2014 | ISSUED FOR AGENCY REVIEW | HL | HL |
| 71 | 11/13/2014 | ISSUED FOR AGENCY REVIEW | HL | HL |
| 72 | 11/13/2014 | ISSUED FOR AGENCY REVIEW | HL | HL |
| 73 | 11/13/2014 | ISSUED FOR AGENCY REVIEW | HL | HL |
| 74 | 11/13/2014 | ISSUED FOR AGENCY REVIEW | HL | HL |
| 75 | 11/13/2014 | ISSUED FOR AGENCY REVIEW | HL | HL |
| 76 | 11/13/2014 | ISSUED FOR AGENCY REVIEW | HL | HL |
| 77 | 11/13/2014 | ISSUED FOR AGENCY REVIEW | HL | HL |
| 78 | 11/13/2014 | ISSUED FOR AGENCY REVIEW | HL | HL |
| 79 | 11/13/2014 | ISSUED FOR AGENCY REVIEW | HL | HL |
| 80 | 11/13/2014 | ISSUED FOR AGENCY REVIEW | HL | HL |
| 81 | 11/13/2014 | ISSUED FOR AGENCY REVIEW | HL | HL |
| 82 | 11/13/2014 | ISSUED FOR AGENCY REVIEW | HL | HL |
| 83 | 11/13/2014 | ISSUED FOR AGENCY REVIEW | HL | HL |
| 84 | 11/13/2014 | ISSUED FOR AGENCY REVIEW | HL | HL |
| 85 | 11/13/2014 | ISSUED FOR AGENCY REVIEW | HL | HL |
| 86 | 11/13/2014 | ISSUED FOR AGENCY REVIEW | HL | HL |
| 87 | 11/13/2014 | ISSUED FOR AGENCY REVIEW | HL | HL |
| 88 | 11/13/2014 | ISSUED FOR AGENCY REVIEW | HL | HL |
| 89 | 11/13/2014 | ISSUED FOR AGENCY REVIEW | HL | HL |
| 90 | 11/13/2014 | ISSUED FOR AGENCY REVIEW | HL | HL |
| 91 | 11/13/2014 | ISSUED FOR AGENCY REVIEW | HL | HL |
| 92 | 11/13/2014 | ISSUED FOR AGENCY REVIEW | HL | HL |
| 93 | 11/13/2014 | ISSUED FOR AGENCY REVIEW | HL | HL |
| 94 | 11/13/2014 | ISSUED FOR AGENCY REVIEW | HL | HL |
| 95 | 11/13/2014 | ISSUED FOR AGENCY REVIEW | HL | HL |
| 96 | 11/13/2014 | ISSUED FOR AGENCY REVIEW | HL | HL |
| 97 | 11/13/2014 | ISSUED FOR AGENCY REVIEW | HL | HL |
| 98 | 11/13/2014 | ISSUED FOR AGENCY REVIEW | HL | HL |
| 99 | 11/13/2014 | ISSUED FOR AGENCY REVIEW | HL | HL |
| 100 | 11/13/2014 | ISSUED FOR AGENCY REVIEW | HL | HL |



Velasquez Environmental Management Services, Inc.

Copper Flat Mine

THEMAC
RESOURCES

NEW
MEXICO
COPPER
CORPORATION

COPPER FLAT POST-MINING RECLAMATION

South to North Perspective



East to West Perspective

