
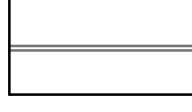
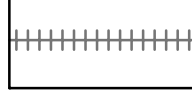
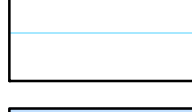

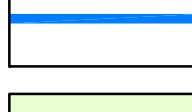



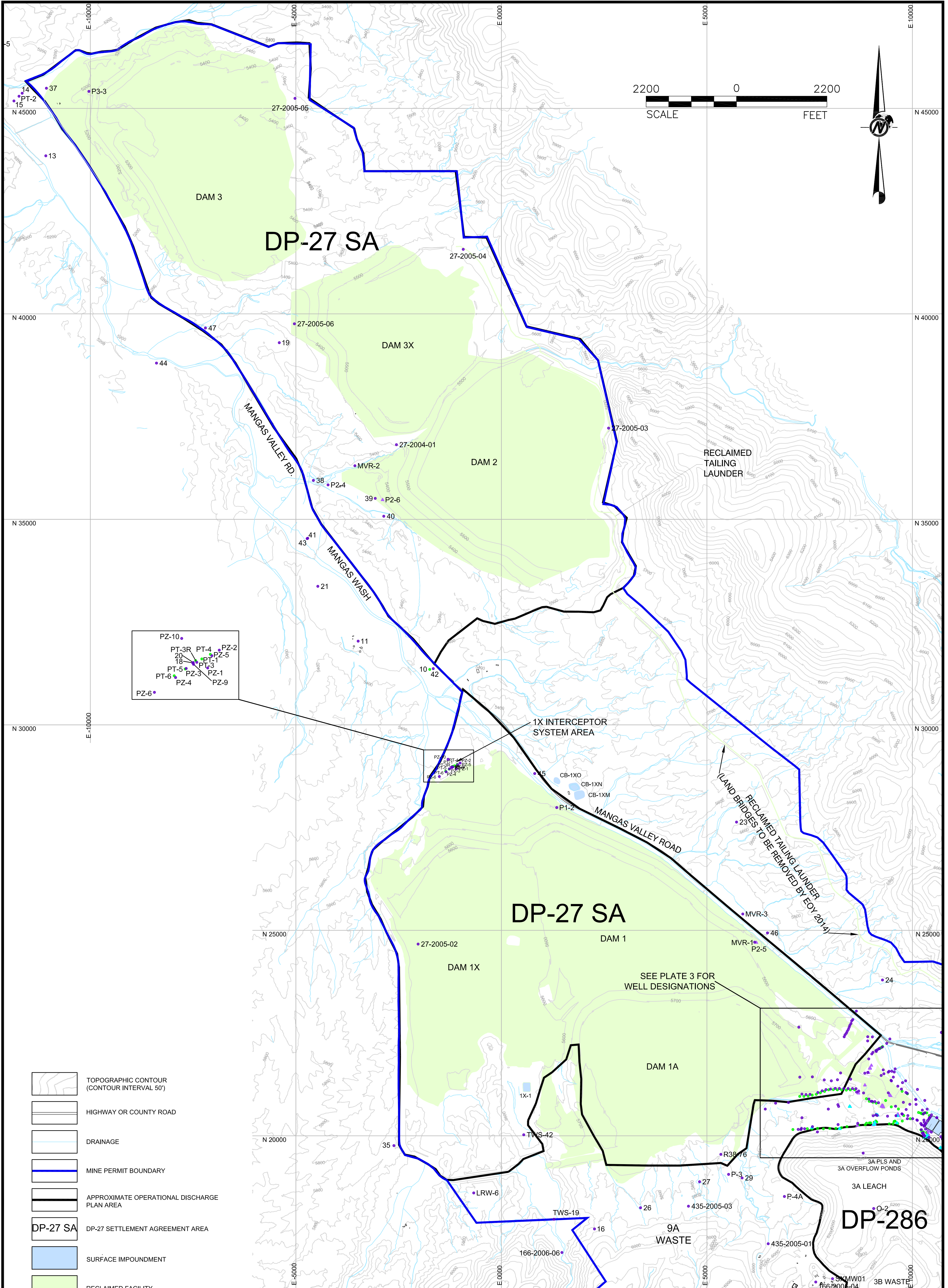


-  TOPOGRAPHIC CONTOUR (CONTOUR INTERVAL 50')
-  HIGHWAY OR COUNTY ROADS
-  RAILROAD
-  DRAINAGE
-  SURFACE IMPOUNDMENT
-  AREA BOUNDARIES (EXTERIOR REPRESENTS MINE PERMIT BOUNDARY)
-  RECLAIMED FACILITIES AND FACILITIES TO BE RECLAIMED BY EOY 2014
-  CURRENT CONDITIONAL WAIVER AREAS (OPSDA)

NOTES: LEACH - LEACH STOCKPILE
WASTE - WASTE ROCK STOCKPILE
OPSDA - OPEN PIT SURFACE DRAINAGE AREA

REFERENCE SOURCE OF TOPOGRAPHY: 2012 MINE TOPOGRAPHY FROM FMI.

PROJECT FREEPORT MCMORAN TYRONE, INC. TYRONE CLOSURE/CLOSEOUT PLAN GRANT COUNTY, NEW MEXICO				
TITLE TYRONE MINE AREAS AND FACILITIES				
 Golder Associates Albuquerque, New Mexico	PROJECT No.	11380040	FILE No.	PLATE 1
	DESIGN	TS	07/09/07	SCALE AS SHOWN
	CADD	CM	06/06/13	REV. 0
	CHECK	TS	06/06/13	
	REVIEW	TS	06/06/13	
PLATE 1				



Legend for well symbols:

- PZ-10
- PT-3R
- PT-4
- PZ-2
- PT-18
- PT-1
- PT-5
- PZ-3
- PZ-1
- PT-6
- PZ-4
- PZ-9
- PZ-6

Legend for well symbols (continued):

- PZ-1
- PT-1
- PZ-2
- PT-3
- PZ-3
- PT-4
- PZ-4
- PT-5
- PZ-5
- PT-6
- PZ-6
- PT-7
- PZ-7
- PT-8
- PZ-8
- PT-9
- PZ-9
- PT-10
- PZ-10

- TOPOGRAPHIC CONTOUR (CONTOUR INTERVAL 50')
- HIGHWAY OR COUNTY ROAD
- DRAINAGE
- MINE PERMIT BOUNDARY
- APPROXIMATE OPERATIONAL DISCHARGE PLAN AREA
- DP-27 SETTLEMENT AGREEMENT AREA
- SURFACE IMPOUNDMENT
- RECLAIMED FACILITY
- PERCHED ZONE MONITOR WELL
- PERCHED ZONE PRODUCTION WELL
- REGIONAL MONITOR WELL
- REGIONAL PRODUCTION WELL

REFERENCE SOURCE OF TOPOGRAPHY: 2012 MINE TOPOGRAPHY FROM FMI.

PROJECT				FREEPORT MCMORAN TYRONE, INC. TYRONE CLOSURE/CLOSEOUT PLAN GRANT COUNTY, NEW MEXICO			
TITLE				MANGAS VALLEY TAILING AREA CHARACTERISTICS AND FACILITIES			
PROJECT No.		11380040		FILE No.		PLATE 2	
DESIGN		TS		07/31/07		SCALE AS SHOWN REV. 0	
CADD		CM		06/06/13			
CHECK		TS		06/06/13			
REVIEW		TS		06/06/13			
Golder Associates Albuquerque, New Mexico				PLATE 2			

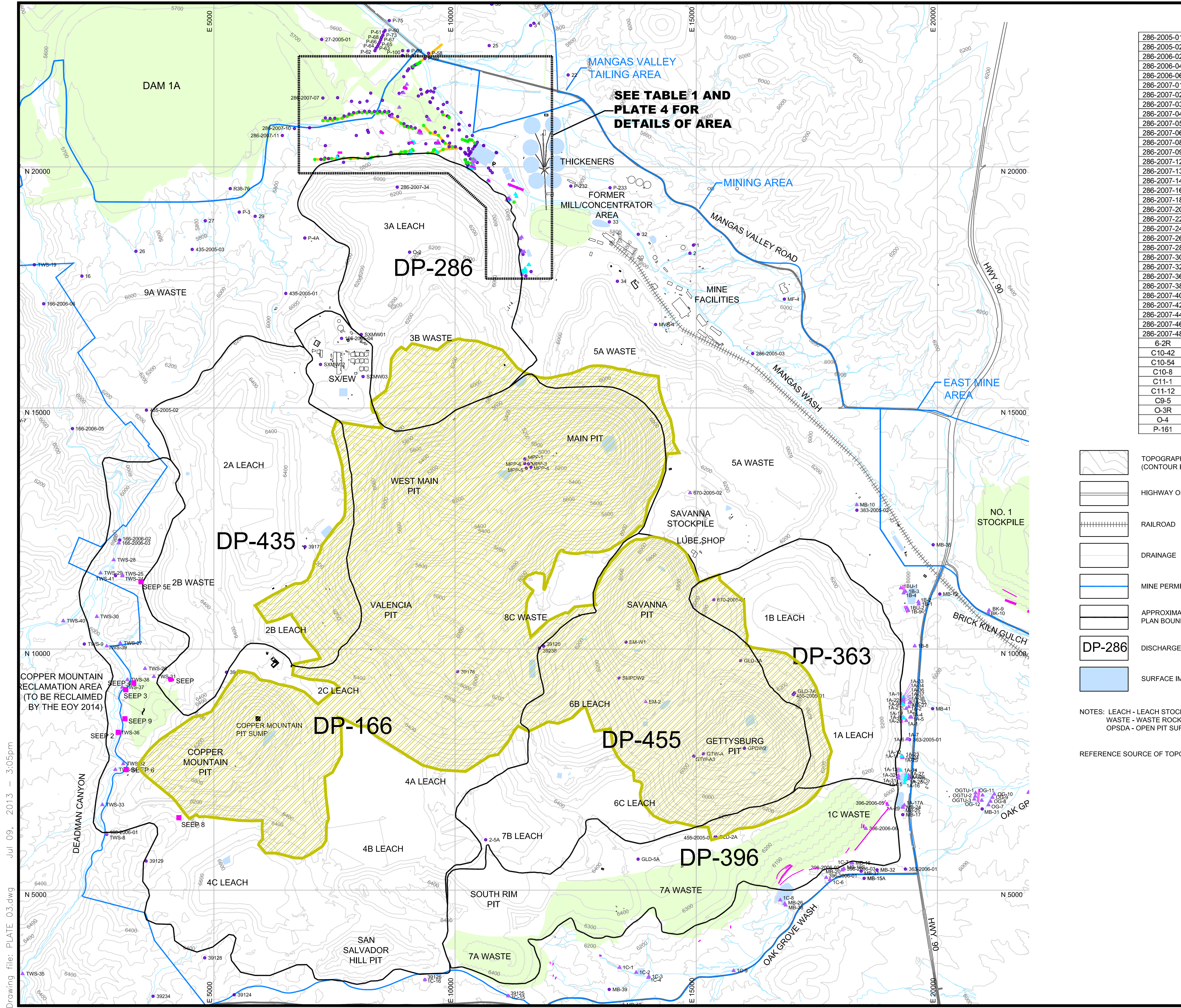


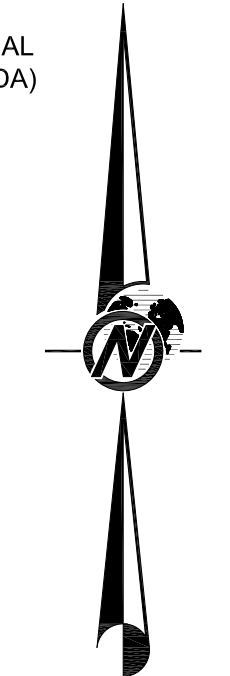
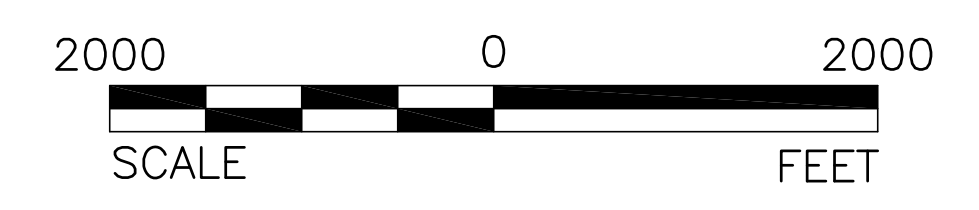
TABLE 1 - WELLS IN THE NO.3A STOCKPILE AREA

286-2005-01	P-163	P-227	P-81	286-2007-47	P-221	C8-27	C6-16
286-2005-02	P-166	P-228	P-82	286-2007-49	P-234	C8-30	C6-20
286-2006-02	P-167	P-229	P-84	286-2007-50	P-235	C8-36	C6-34
286-2006-04	P-168	P-22A	P-85	286-2007-51	P-236	C6-10	C6-35
286-2006-06	P-173	P-230	P-8A	P-12A	P-237	C6-14	C6-36
286-2007-01	P-176	P-23A	O-5	P-13A	P-238	C6-17	C6-45
286-2007-02	P-17A	P-24	C1-31	C10-18	P-42	C6-18	C6-46
286-2007-03	P-183	P-31	C1-4	C10-55	P-53	C6-19	C6-53
286-2007-04	C-5R	P-32	C1-5	C10-58	P-54	C6-2	MV-1
286-2007-05	P-106	P-34	C2-11	C11-16	P-55	C6-33R	MV-2
286-2007-06	P-10A	P-162	C2-12	C1-15	P-56	C6-4	MV-5
286-2007-08	P-10AR	P-164	C2-4	C1-18	P-57	C6-43	32
286-2007-09	P-11	P-165	C3-1	C1-19	P-70	C6-44	48
286-2007-12	P-114	P-174	C3-11	C1-22	P-76	C6-47	33
286-2007-13	P-115	P-177	C3-13	C1-23	C10-28	C6-48	P-232
286-2007-14	P-116	P-178	C4-26	C1-25	C10-40	C1-28	P-233
286-2007-16	P-117	P-182	C6-5	C6-63	C4-4	C1-30	286-2010-01
286-2007-18	P-149	P-185	C6-59	C6-65	C4-6	C1-33	286-2010-02
286-2007-20	P-14A	P-188	C6-6	C7-15	C5-14	C4-24	286-2008-07
286-2007-22	P-16	P-189	C6-60	C7-34	C5-15	C4-25	286-2008-08
286-2007-24	P-37	P-239	C6-61	C8-10	C5-3	C4-28	C6-64
286-2007-26	F-43	P-240	C6-62	C8-11	C5-6	C4-30	286-2008-06
286-2007-28	F-44	P-241	C6-9	C8-33	C6-1	C4-31	P-92
286-2007-30	F-45	P-29	C7-33	C8-34	C10-41	C4TU-1	286-2008-04
286-2007-32	F-46	P-30	C7-35	C8-43	C10-50	C4TU-2	286-2008-05
286-2007-36	F-47	P-33	C7-36	C8-48	C10-51	C8-39	286-2008-03
286-2007-38	F-48	P-38	286-2007-15	F-192	C10-52	C8-44	P-59
286-2007-40	F-49	P-39	286-2007-17	F-194	C10-53	C8-46	286-2006-03
286-2007-42	P-5	P-40	286-2007-19	F-195	C10-57	C8-47	286-2008-02
286-2007-44	286-2006-01	P-41	286-2007-21	F-196	C10-59	C8-49	286-2008-01
286-2007-46	286-2006-03	P-50	286-2007-23	F-198	C10-62	C8-5	286-2007-07
286-2007-48	286-2006-05	P-51	286-2007-25	F-203	C1-10	C8-50	286-2006-01
6-2R	P-184	P-52	286-2007-27	F-205	C1-13	C8-8	
C10-42	P-187	P-6A	286-2007-29	F-206	C1-14	C9-3	
C10-54	P-193	P-6B	286-2007-31	F-209	C1-16	MV-4	
C10-8	P-19A	P-6RRRR	286-2007-33	F-210	C7-37	P-15S	
C11-1	P-2	P-71A	286-2007-35	F-211	C7-38	C10-17	
C11-12	P-208	P-72R	286-2007-37	F-212	C7-39	C8-9	
C9-5	P-219	P-74	286-2007-39	F-215	C8-22	C5-10	
O-3R	P-21A	P-77	286-2007-41	F-216	C8-23	C5-9	
O-4	P-225	P-79	286-2007-43	F-217	C8-24	C6-11	
P-161	P-226	P-80	286-2007-45	F-220	C8-26	C6-15	

- TOPOGRAPHIC CONTOUR (CONTOUR INTERVAL 50')
- HIGHWAY OR COUNTY ROAD
- RAILROAD
- DRAINAGE
- MINE PERMIT BOUNDARY
- APPROXIMATE OPERATIONAL DISCHARGE PLAN BOUNDARY AREA
- DP-286 DISCHARGE PLAN I.D. NUMBER
- SURFACE IMPOUNDMENT
- PERCHED ZONE MONITOR WELL
- PERCHED ZONE PRODUCTION WELL
- REGIONAL MONITOR WELL
- REGIONAL PRODUCTION WELL
- RECLAIMED FACILITY
- REGIONAL AQUIFER PUMPING SYSTEM
- PERCHED SEEPAGE COLLECTION SYSTEM
- CURRENT CONDITIONAL WAIVER AREAS (OPSDA)

NOTES: LEACH - LEACH STOCKPILE
WASTE - WASTE ROCK STOCKPILE
OPSDA - OPEN PIT SURFACE DRAINAGE AREA

REFERENCE SOURCE OF TOPOGRAPHY: 2012 MINE TOPOGRAPHY FROM FMI.



PROJECT	FREEPORT MCMORAN TYRONE, INC. TYRONE CLOSURE/CLOSEOUT PLAN GRANT COUNTY, NEW MEXICO				
TITLE	MINING AREA AND EAST MINE AREA CHARACTERISTICS AND FACILITIES				
	PROJECT No.	11380040	FILE No.	PLATE 3	
	DESIGN	TS	07/09/07	SCALE	AS SHOWN
	CADD	CM	06/06/13	REV.	0
	CHECK	TS	06/06/13		
	REVIEW	TS	06/06/13		
PLATE 3					

Drawing file: PLATE 03.dwg Jul 09, 2013 3:05pm

