

Public Meeting Summary- January 25th, 2024

MADRID STORMWATER AND EROSION CONTROL PROJECT

Santa Fe County, New Mexico

Coal Problem Area: Madrid Coal Breaker - NM935060



Prepared For:

ABANDONED MINE LAND PROGRAM

Mining and Minerals Division

New Mexico Energy, Minerals, and Natural Resources Department

8801 Horizon Blvd. NE, Suite 260

Albuquerque, NM 87113

Prepared By:

GROUSE MOUNTAIN ENVIRONMENTAL CONSULTANTS, LLC

3600 Cerrillos Road, Suite 407

Santa Fe, New Mexico 87507

June 2024

Page left intentionally blank

Table of Contents

1 Introduction	1
1.1 Purpose and Need for the Project	1
2. Project Overview	1
2.1 Project Background	1
2.2 Project Location.....	2
3. Alternatives	4
3.1 Alternative A: Proposed Action Alternative	4
3.2 Alternative B	4
3.3 Alternative C: No Action Alternative	4
4. Public Meeting	4
5. Public Meeting Summary	5
6. Public Meeting Comments.....	5
Appendix A. Public Outreach Documentation	A
Newspaper Notice	A
Public Meeting Notice Flyer	A
Appendix B. Public Meeting Presentation	B
Appendix C. Public Meeting Sign-in Sheet	C
Appendix D. Comments Response Report	D

List of Figures

Figure 1. Proposed Madrid Stormwater and Erosion Control Safety Project Area of Potential Effect (APE).....	3
--	----------

1 Introduction

The New Mexico Energy, Minerals, and Natural Resources Department (EMNRD) Abandoned Mine Land (AML) Program, in partnership with the United States Department of Interior (DOI) Office of Surface Mining Reclamation and Enforcement (OSMRE), are proposing to establish stormwater conveyances, erosion control measures, and fire prevention improvements within the town of Madrid, New Mexico, located in Santa Fe County, approximately 22 miles southwest of Santa Fe (Figure 1). These measures are proposed on 125 acres comprised of private, state and county owned land.

The Proposed Action (PA) is designed to help address on-going coal mining legacy hazards including stormwater flooding in and around Madrid, erosion on existing gob piles and roadways, improving the town's fire suppression capabilities, and closing a re-opened adit feature. Madrid's identity is rooted in its coal mining history and its economy relies heavily on tourism. It is important for the New Mexico AML Program to preserve the historical integrity of the town while safeguarding against environmental hazards.

1.1 Purpose and Need for the Project

The need for the PA is to address human health and safety concerns from hazards associated with the remnants of mining activities, including excessive erosion, flooding, and open mine features, as well as address fire suppression insufficiencies in Madrid. The purpose of the PA is to safeguard the public from these hazards while preserving the historical mining landscape.

2. Project Overview

2.1 Project Background

The town of Madrid was developed as a mining community in the 1890s. As a company town, the area grew to include housing, churches, a school, and local businesses which continued to expand through the 1930s to support miners and their families. Mining activities slowed after World War II with the last active mine in Madrid closing in 1962. During the 1960s and early 1970s, the town was mostly empty and efforts to sell it as a whole unit failed. In the late 1970s, the town was sold as individual properties and purchased in large by eclectic individuals seeking personal freedoms. Today, Madrid is a tourist destination known for its artists who wish to preserve and embrace the rich mining history of the town (WCRM 2021).

The AML Program's work in Madrid began in the 1980s and has included adit closures, asbestos removal, water tank abatement, drainage repairs and reclamation, structure demolition, and various maintenance activities. These projects have been met with varying levels of success and public approval. Recent water quality monitoring results indicate past reclamation efforts performed by the AML Program have made a positive impact on stormwater quality (GMEC 2019a). A detailed description of past projects and results can be found in the Madrid Compendium (NM AML 2009).

In 2011, Madrid Mining Landscape community outreach identified two main reclamation projects in the town of Madrid: The East Slope Catchment project and the Arroyo Restoration project (Dekker/Perich/Sabatini 2011). Since abandonment of the mines, existing coal waste piles, known

as gob piles, have remained relatively unstable and poorly vegetated. This, combined with modified natural drainages and deteriorated manmade drainage structures, has resulted in the movement of large quantities of sediment downslope and downstream flooding, especially during high precipitation events. The sediment movement has had significant negative impacts on the town of Madrid, located immediately downslope and adjacent to multiple coal gob piles. Over time, sediment has accumulated within the area, clogging drainage paths, and leading to episodic flooding throughout the town (WCRM 2021). Recently, fugitive stormwater and resulting erosion has exposed and reopened a mine adit feature that was previously backfilled by AML in 2011.

In recent years, the AML Program has increased public involvement throughout the planning process. The AML Program met numerous times with the local community and landowners. One of the main issues repeated during these communications was to determine a way to address these severe stormwater concerns without complete reclamation of the gob piles that celebrate the historical mining of the town. In addition, community members expressed concerns to update the town's fire suppression system as the current water storage tank is outdated, undersized, and has severely eroded (NM AML 2009). The AML Program strongly considered these public concerns during development of the PA. For a collection of documents regarding the history and development of this project, please see the NM AML Program's website: <https://www.emnrd.nm.gov/mmd/abandoned-mine-land-program/projects/award-winning-work/madrid-stormwater-erosion-control-project/madrid-stormwater-erosion-control-project-documents/>.

2.2 Project Location

The Area of Potential Effect (APE), containing the town of Madrid, is approximately 22 miles southwest of Santa Fe in Santa Fe County, NM. The APE is located within section 35 of Township 14 North, Range 7 East (T14N-R7E), as depicted in United States Geological Survey (USGS) New Mexico Principal Meridian (NMPM), and on unplatted land in the Mesita de Juana Lopez and Ortiz Mine Grants, as depicted in United States Geological Survey (USGS) New Mexico Principal Meridian (NMPM) Madrid 7.5' topographic quadrangles (Figure 2).

The APE is a combination of private, state and county-owned land that makes up approximately 125 acres (Figure 2). The percentage of surface ownership within the APE includes: 84 acres (67%) private, 27 acres (22%) Santa Fe County, 7 acres (6%) New Mexico Department of Transportation (NMDOT), 3 acres (2%) Madrid Water Cooperative, and 4 acres (3%) Madrid Landowners Association.

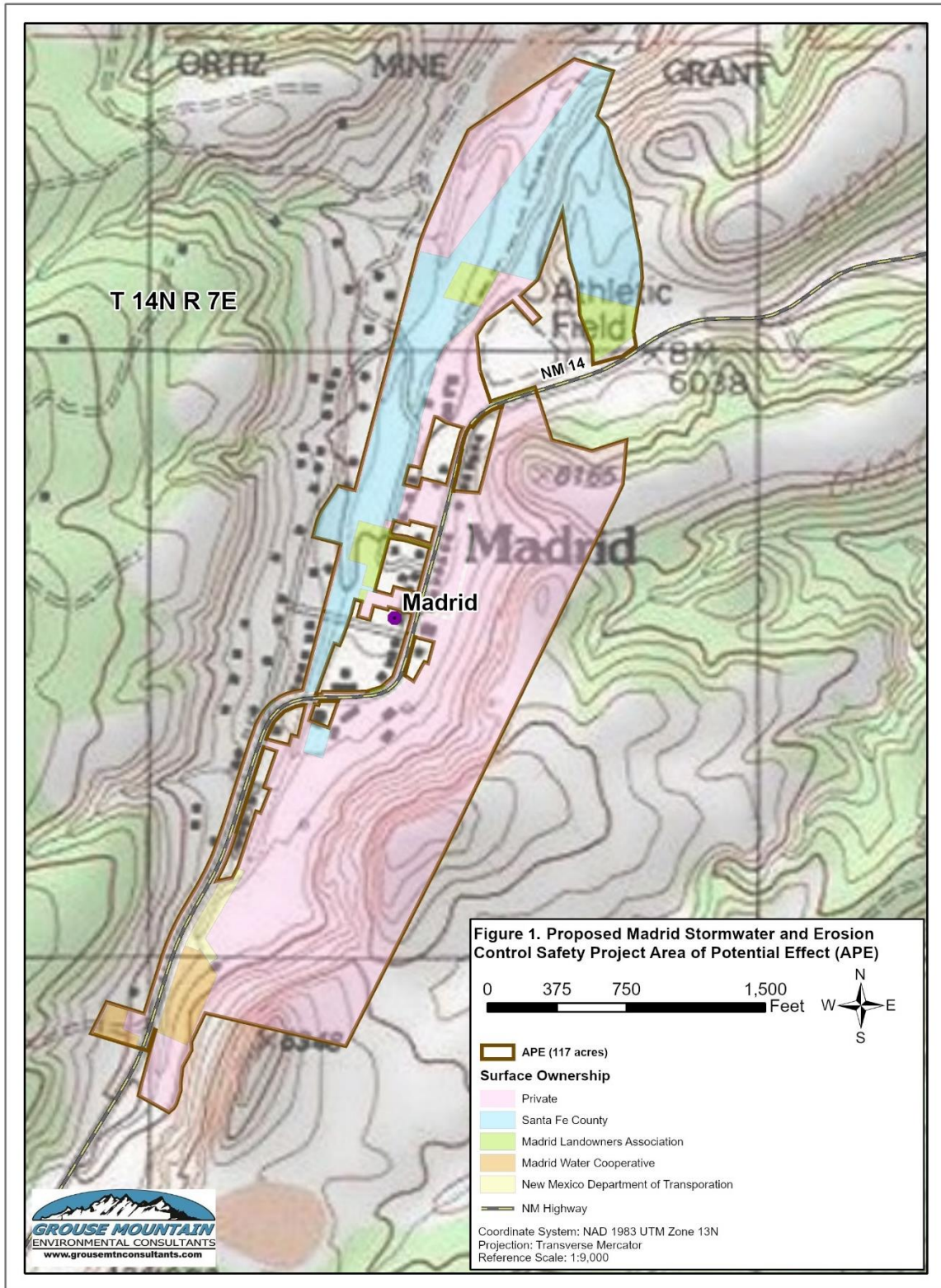


Figure 1. Proposed Madrid Stormwater and Erosion Control Safety Project Area of Potential Effect (APE)

3. Alternatives

For further details regarding each Alternative described below, please see the full description within the Environmental Assessment.

3.1 Alternative A: Proposed Action Alternative

The PA as described below was designed to address issues related to legacy mining operations, including stormwater control, erosion, and open mine features, as well as improve fire suppression capabilities, while being visually unobtrusive in the historical setting of Madrid. The stormwater improvements proposed would provide a medium level of service and would require periodic maintenance to repair gravel roads, channels, and rolling dips, and to remove sediment and debris, especially after large precipitation events. Reclamation and revegetation work would be completed in Madrid Arroyo (details to be provided in upcoming Engineering Designs and Revegetation Plan).

3.2 Alternative B

Alternative B is a selection of actions similar to the PA with alterations for each project area as described below. In general, Alternative B includes more intensive stormwater management actions that would also be more visually obtrusive in Madrid's historical setting. The stormwater improvements proposed would provide a high level of service and would require less maintenance than the PA. Alternative B would include the same mine adit closure as discussed in the PA.

3.3 Alternative C: No Action Alternative

The NAA would take no measures to reduce hazards associated with past mining activity. This alternative provides the lowest level of service, as no stormwater or erosion structures would be constructed in the discussed project areas and fire suppression capabilities would remain at the current level. The NAA does not satisfy the purpose and need of the PA based on AML Program reclamation priorities (PL 95-87, 30 USC 1240[a] 2006).

4. Public Meeting

A legal notice was prepared in both English and Spanish to describe the project background, preliminary alternatives, how to comment, and meeting time and location (Appendix A). The notice was advertised in the *Santa Fe New Mexican* and *Albuquerque Journal* on January 8, 2024. Copies of the public notices were posted on the public information boards at the Mercantile Store, Java Junction, and Village Grocer. A public service announcement was aired on KMRD for a few weeks and a posting on the Madrid Landowners Association Facebook Group page in mid-December. Notices were also mailed to approximately 340 local residential and business addresses on the week of January 8, 2024, using the U.S Postal Office Every Door Direct Mail service.

The EA was released for a 30-day comment period between January 8, 2024, and February 7, 2024.

During the comment period, the public and interested parties were invited to provide comments related to the Madrid Stormwater and Erosion Control Project Environmental Assessment. The

methods by which the public could submit comments or suggestions were:

- Over the phone, by calling 505-930-5166
- Email to Madrid_EA_Comments@gmecnm.com
- In person at the public meeting)
- Traditional mail delivery of written comments to Grouse Mountain Environmental Consultants:

*3600 Cerrillos Road, Suite 407
Santa Fe, New Mexico 87507*

5. Public Meeting Summary

An in-person public meeting was held at the at the Madrid Fire Station, 5 Firehouse Lane, Madrid, New Mexico on January 25th, 2024, from 6pm to 8pm. The purpose of this meeting was to provide an overview of the proposed project and associated environmental assessment and provide an opportunity for the public, area neighbors, and businesses to ask questions and provide input. A PowerPoint presentation was prepared and presented at the meeting jointly by Grouse Mountain Environmental Consultants (Appendix B). AML representatives and associated contractors were available for questions. There were approximately 27 people in attendance for the meeting (In Person Sign in Sheet, Appendix C).

6. Public Meeting Comments

During the 30-day comment period, comments were provided by 61 different parties. Most comments were from individuals with a select few people providing input on behalf of or as representation of a group or a group giving the feedback (Comments Response Report, Appendix D). Many of the commentors gave input on multiple aspects of the proposed action or the analysis within the EA; in total 287 comments/issues were recorded during the comment period. Comments were received during the meeting question and answer session, via phone, and via email.

The main topics brought up in the comment period were:

- A large percentage of comments were against bulldozing Madrid arroyo.
- Many commenters against the Madrid Arroyo portion of the plan, or those who understood work may be necessary in the arroyo, requested more detailed engineering designs and revegetation plan.
- Comments regarding the water tank and stormwater features outside Madrid Arroyo were primarily positive.
- A desire for more information on downstream impacts.
- Clarification of the ballpark addition of the APE, which was a portion of the proposed action that was added after the EA was posted for review.

APPENDIX A. PUBLIC OUTREACH DOCUMENTATION

Newspaper Notice

SANTA FE NEW MEXICAN

Founded 1849

GROUSE MOUNTAIN
ENVIRINMENTAL CONSULTANT
3600 Cerrillos Rd Ste 407
Santa Fe, NM 87507-2653

ACCOUNT:	S31584	
AD NUMBER:	65806	
LEGAL NO	93013	P.O.#:
1 TIME(S)	160.65	
AFFIDAVIT	0.00	
TAX	13.15	
TOTAL	173.80	

AFFIDAVIT OF PUBLICATION

STATE OF NEW MEXICO
COUNTY OF SANTA FE

I, Veronica Gonzalez, being first duly sworn declare and say that I am Legal Advertising Representative of THE SANTA FE NEW MEXICAN, a daily newspaper published in the English language, and having a general circulation in the Counties of Santa Fe, Rio Arriba, San Miguel, and Los Alamos, State of New Mexico and being a newspaper duly qualified to publish legal notices and advertisements under the provisions of Chapter 167 on Session Laws of 1937; that the Legal No 93013 a copy of which is hereto attached was published in said newspaper 1 day(s) between 01/08/2024 and 01/08/2024 and that the notice was published in the newspaper proper and not in any supplement; the first date of publication being on the 08th day of January, 2024 and that the undersigned has personal knowledge of the matter and thngs set forth in this affidavit.

ISI

LEGAL ADVERTISEMENT RESPRESENTATIVE

Subscribed and sworn to before me on this 9th day of January, 2024

Notary

Commission Expires:

NATHANIEL CRISTOFER MARTINEZ
Notary Public - State of New Mexico
Commission # 1139927
My Comm. Expires Mar 14, 2027

SANTA FE NEW MEXICAN

Founded 1849

GROUSE MOUNTAIN
ENVIRINMENTAL CONSULTANT
3600 Cerrillos Rd Ste 407
Santa Fe, NM 87507-2653

ACCOUNT:	S31584	
AD NUMBER:	65807	
LEGAL NO	93014	P.O.#:
1 TIME(S)	178.50	
AFFIDAVIT	0.00	
TAX	14.61	
TOTAL	193.11	

AFFIDAVIT OF PUBLICATION

STATE OF NEW MEXICO
COUNTY OF SANTA FE

I, Veronica Gonzalez, being first duly sworn declare and say that I am Legal Advertising Representative of THE SANTA FE NEW MEXICAN, a daily newspaper published in the English language, and having a general circulation in the Counties of Santa Fe, Rio Arriba, San Miguel, and Los Alamos, State of New Mexico and being a newspaper duly qualified to publish legal notices and advertisements under the provisions of Chapter 167 on Session Laws of 1937; that the Legal No 93014 a copy of which is hereto attached was published in said newspaper 1 day(s) between 01/08/2024 and 01/08/2024 and that the notice was published in the newspaper proper and not in any supplement; the first date of publication being on the 08th day of January, 2024 and that the undersigned has personal knowledge of the matter and things set forth in this affidavit.

ISI

LEGAL ADVERTISEMENT RESPRESENTATIVE

Subscribed and sworn to before me on this 9th day of January, 2024

Notary

Commission Expires:

NATHANIEL CRISTOFER MARTINEZ
Notary Public - State of New Mexico
Commission # 1139927
My Comm. Expires Mar 14, 2027

AFFIDAVIT OF PUBLICATION

STATE OF NEW MEXICO

County of Bernalillo SS

Wayne Barnard, the undersigned, authorized Representative of the Albuquerque Journal, on oath states that this newspaper is duly qualified to publish legal notices or advertisements within the meaning of Section 3, Chapter 167, Session Laws of 1937, that payment therefore has been made of assessed as court cost; and that the notice, copy of which is hereto attached, was published in said paper in the regular daily edition, for 1 time(s) on the following date(s):

01/08/2024



Sworn and subscribed before me, a Notary Public, in and for the County of Bernalillo and State of New Mexico this

8 day of January of 2024

PRICE \$360.89

Statement to come at the end of month.

ACCOUNT NUMBER 1086021

AUDREY RAYLEENE CRESPIN
Notary Public - State of New Mexico
Commission # 1140072
My Comm. Expires Apr 6, 2027

Audrey Rayleene Crespin

AFFIDAVIT OF PUBLICATION
STATE OF NEW MEXICO
County of Bernalillo

Wayne Barnard, the undersigned, SS

states that this newspaper, the authorized Representative of the Albuquerque Journal, on oath meaning of Section 3, Chapter 167, Session Laws of 1937, that payment therefore has been made said paper in the regular daily edition, for 1 time(s) on the following date(s):

01/08/2024

Sworn and subscribed before me, a Notary Public, in and for the County of Bernalillo and State of New Mexico this
8 day of January

PRICE \$387.41 of 2024

Statement to come at the end of month.

ACCOUNT NUMBER 1086021



Public Meeting Notice Flyer

PUBLIC INFORMATION MEETING

Madrid Stormwater and Erosion Control Project in Madrid, NM

Public Meeting:
January 25, 2024, 6:00pm-8:00pm
at Madrid Firehouse
5 Firehouse Ln, Madrid, NM
Presentation and Feedback

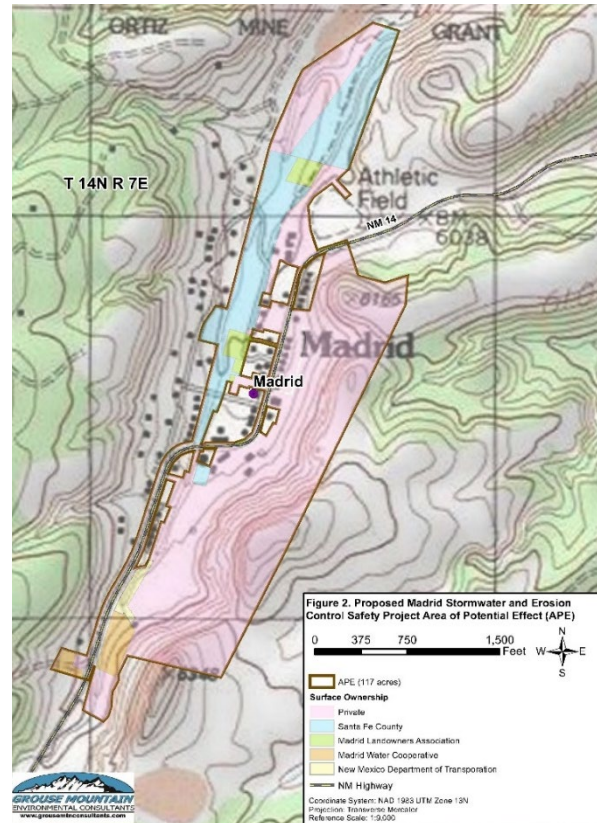
Environmental Assessment Comment Period:
January 8, 2024, through February 7, 2024
Environmental Assessment available online at:
<https://www.emnrd.nm.gov/mmd/public-notice/>

Invitation on behalf of: The New Mexico Energy, Minerals, and Natural Resources Department, Abandoned Mine Land Program (AML), in partnership with the U.S. Department of Interior, Office of Surface Mining Reclamation and Enforcement (OSMRE).

Meeting Purpose: (1) To provide an overview of the proposed project and associated environmental assessment; (2) to provide an opportunity for the public, area neighbors, and businesses to ask questions and provide input.

Comments: Comments will be accepted and recorded at the public meeting or they may be emailed to Madrid_EA_Comments@gmecnm.com; mailed to Grouse Mountain Environmental Consultants, 3600 Cerrillos Rd, Ste 407, Santa Fe, NM 87507; or provided over the phone by calling Hillary Robbie at 505-930-5166. Please submit comments before February 7, 2024.

ADA: To request Americans with Disabilities Act (ADA)-related accommodations for this meeting, or should you require an interpreter, contact Hillary Robbie with Grouse Mountain Environmental Consultants at 505-930-5166 or Madrid_EA_Comments@gmecnm.com by January 18, 2024.



REUNIÓN DE INFORMACIÓN PÚBLICA

Proyecto de Control de Aguas Pluviales y Erosión en Madrid, NM

Reunión Pública:

El 25 de enero del 2024, 6:00pm-8:00pm
en Madrid Estación de Bomberos
5 Firehouse Ln, Madrid, NM
Presentación y comentarios

Período de tiempo para comentarios de la
evaluación ambiental:
del 8 de enero del 2024 al 7 de febrero del 2024.
La evaluación ambiental está disponible en el
siguiente enlace:

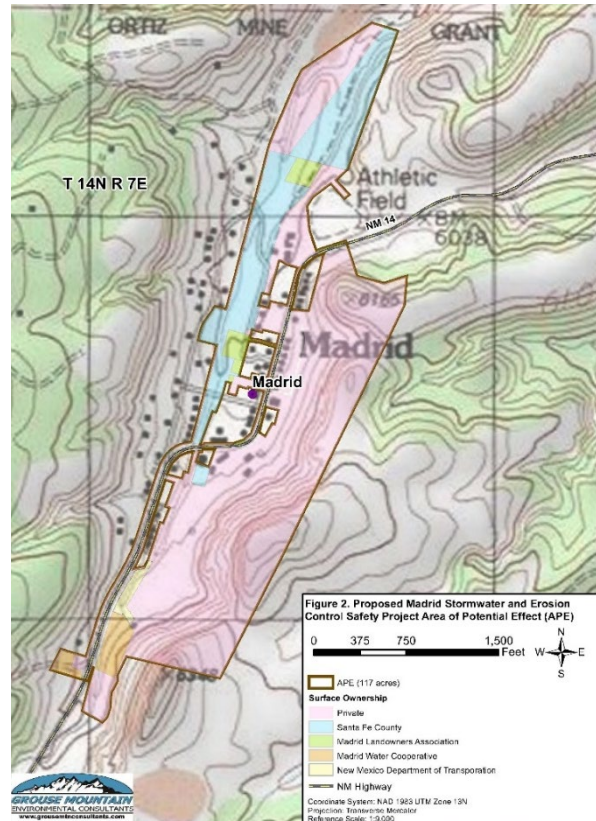
<https://www.emnrd.nm.gov/mmd/public-notice/>

Invitación en nombre de: El Programa de Minas Abandonadas del El Departamento de Energía, Minerales y Recursos Naturales de Nuevo México (AML, por sus siglas en inglés), en alianza con la Oficina de Recuperación y Ejecución de Minería a Superficie (OSMRE, por sus siglas en inglés).

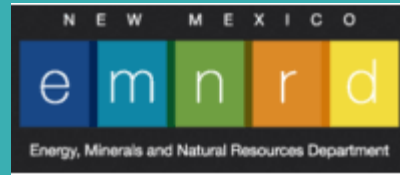
Propósito de la Reunión: (1) Presentar una descripción general del proyecto propuesto y la evaluación ambiental asociada; y (2) darle la oportunidad al público, vecinos del área, y negocios a hacer preguntas y ofrecer sus aportaciones.

Comentarios: Se aceptarán comentarios y estos serán registrados en la reunión pública, pero también pueden mandar comentarios por correo electrónico: Madrid_EA_Comments@gmecnm.com; o por correo regular: Grouse Mountain Environmental Consultants, 3600 Cerrillos Rd, Ste 407, Santa Fe, NM 87507; o por teléfono a Cristina Marciales al: 505-930-5166 ext. 202. Favor de entregar comentarios antes del 7 febrero del 2024.

Ley de Estadounidenses con Discapacidades (ADA, por sus siglas en inglés): Para pedir asistencia por el ADA para esta reunión, o si requiere un traductor, por favor llamar a Cristina Marciales con Grouse Mountain Environmental Consultants: 505-930-5166 ext. 202, o enviar correo electrónico: Madrid_EA_Comments@gmecnm.com antes del 18 de Enero del 2024.



APPENDIX B. PUBLIC MEETING PRESENTATION



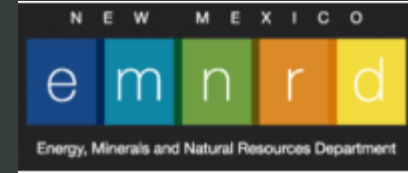
PUBLIC INFORMATION MEETING

Madrid Stormwater and Erosion Control Project

Thursday, January 25th, 2024
Madrid Firehouse – Madrid, NM



Public Information Meeting - Purpose



Gob pile above Madrid, NM
– Photo courtesy of AML

- Introduce Team Members from Agencies and Contractors
- Provide Overview of Madrid Stormwater and Erosion Control Project
- Public Involvement: Comment session & Question/Answers with project representatives

Project Team & Responsibilities



NEW MEXICO ABANDONED MINE LAND (AML) PROGRAM – Project Lead; project development, coordination, management, & construction oversight



OFFICE of SURFACE MINING RECLAMATION & ENFORCEMENT (OSMRE) – co-federal project funding source



SANTA FE COUNTY- water tank engineering design, assistance with permit acquisition on county property, landowner

Project Team & Responsibilities



GROUSE MOUNTAIN ENVIRONMENTAL CONSULTANTS— prepared Environmental Assessment (EA); public outreach; natural resources surveys; prepared Biological Evaluation; water quality studies; and Preconstruction Notice for USACE; sub-contracted cultural resource studies



WESTON SOLUTIONS— designed stormwater features for the east hillside and Firehouse Lane



RIVERBEND ENGINEERING— designed arroyo improvements and other stormwater features on Cave Road



TIERRA WEST, LLC— designed water tank and pipeline boring locations



Team Members



AML Team Members:

- Leeland Murray: AML Project Manager
- Lloyd Moiola: AML Environmental Manager
- Andrew Zink: AML Cultural Resource Manager
- James Hollen: AML NEPA Coordinator
- Mike Thompson: AML Program Manager, P.E.

Santa Fe County:

- Curt Temple: Public Works Projects Section Manager
- Adeline Murthy: Open Space and Trails Planning Team Leader
- Monica Harmon: Open Space Resource Management Specialist

Grouse Mountain Environmental Consultants:

- Hillary Robbie: NEPA Coordinator
- Cristina Marciales: Project Assistant

Weston Solutions:

- Rob Ederer, P.E.

Riverbend Engineering:

- Chris Phillips, P.E.



Madrid Overview
– Photo Courtesy of Grouse Mountain

Project Area: Madrid, NM

- Coal mining community from 1890s
- Developed as a company town
- Last active mine closed in 1962
- Late 1970s town sold as individual private properties
- Present day tourist destination

AML History in Madrid

1980s through Today

- Adit closures
- Asbestos removal
- Water tank abatement
- Drainage repairs and reclamation
- Structure demolition
- Maintenance



Madrid Overview
– Photo Courtesy of AML

Project Development



Gob piles
– Photo Courtesy of WCRM

AML Program Public Involvement

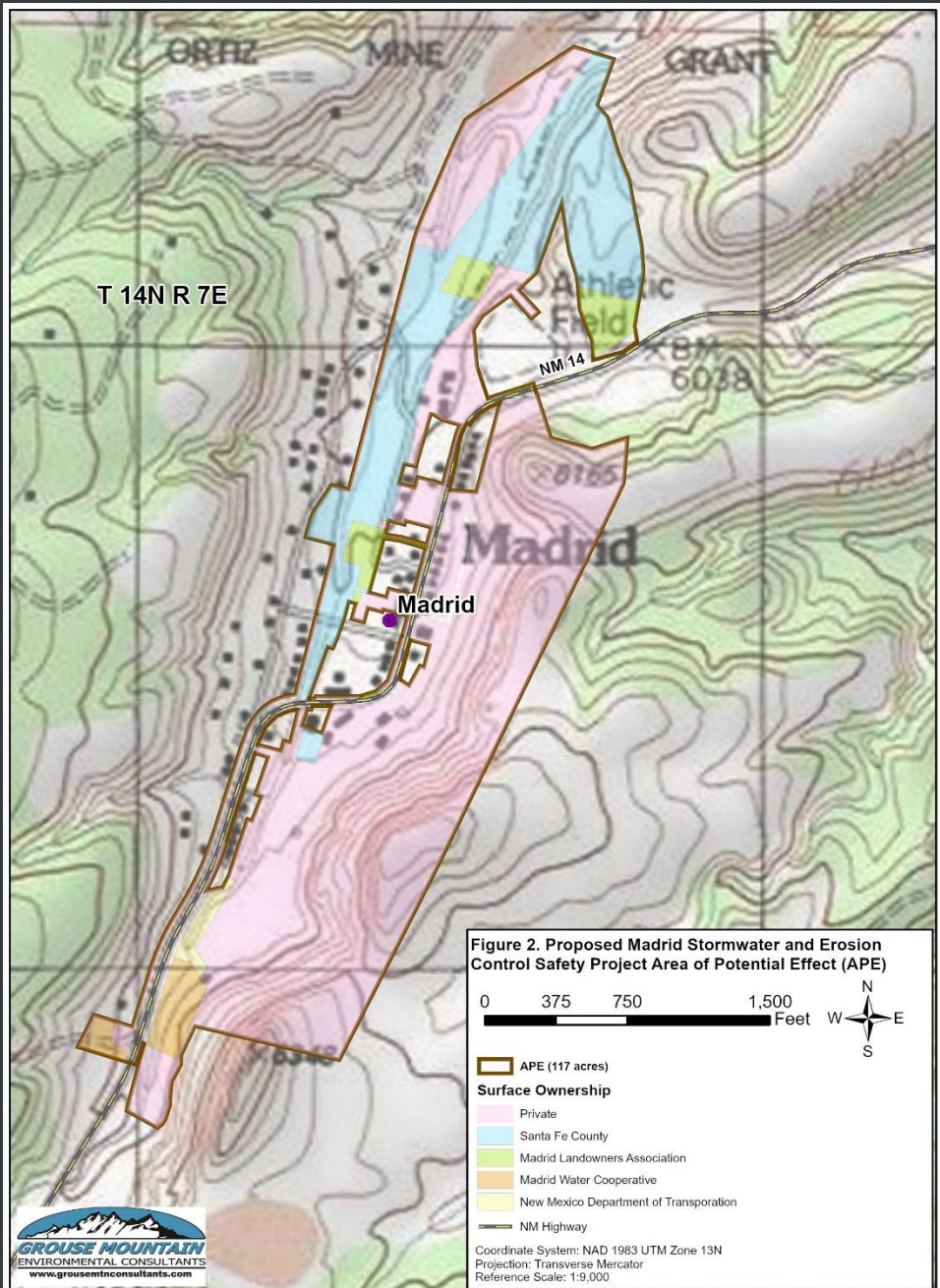
- Gob piles, modified drainages, deteriorated drainage structures causing severe sedimentation and flooding
- Address stormwater concerns
- Maintain the historic integrity- no complete gob pile reclamation
- Update fire suppression system
- Project engineers and AML developed 30/60/90% plans with community input at each step

Recently reopened mine adit feature a safety concern

Madrid Stormwater and Erosion Control Project Area

125-acre Area of Potential Effect (APE)

- Private Land: 84 acres (67%)
- Santa Fe County: 27 acres (22%)
- New Mexico Department of Transportation (NMDOT): 7 acres (6%)
- Madrid Landowners Association: 4 acres (3%)
- Madrid Water Cooperative: 3 acres (2%)



RESOURCE SURVEYS

Wildlife

Hydrology

Water Quality

Cultural Resources

Historical Resources



Arroyo
– *Photo Courtesy of Grouse Mountain*



Natural Resources Surveys

Desktop analysis

Surveys 2019

- No threatened or endangered species habitat or presence
- No rare plants located
- 1 active Cooper's hawk nest
- No wetlands
- All drainages ephemeral

Biological Evaluation



Plant Survey
— Photo Courtesy of Grouse Mountain



Water Quality

Sampling in 2019

- 2 sites below gob piles
- 2 sites at discharge points
- 1 site away from mining effects (reference site)

New Mexico Water Quality Standards

- Properties, quality, pollutants

Results

- Total Dissolved Solids, dissolved manganese, dissolved aluminum above threshold
- Reference site and sample site below Zuni bowls all below thresholds



Water Quality Analysis
– Photo Courtesy of Grouse Mountain

Cultural Resources

- National Historic Preservation Act, National Cultural Properties Act, New Mexico Prehistoric and Historic Sites Preservation Act, and New Mexico Cultural Properties Act
- Madrid Historic District (downtown, ballpark, mining museum, railroad segments, etc.)
- Western Cultural Resource Management, Inc. conducted surveys 2019-2020
 - 164-acre inventory
 - 15 historic archaeological sites
 - 1 isolated occurrence
 - 2 historical structures
 - 109 historic buildings

ENVIRONMENTAL ASSESSMENT (EA)

National Environmental Policy Act (NEPA)

Requires public involvement

Addresses a Purpose and Need

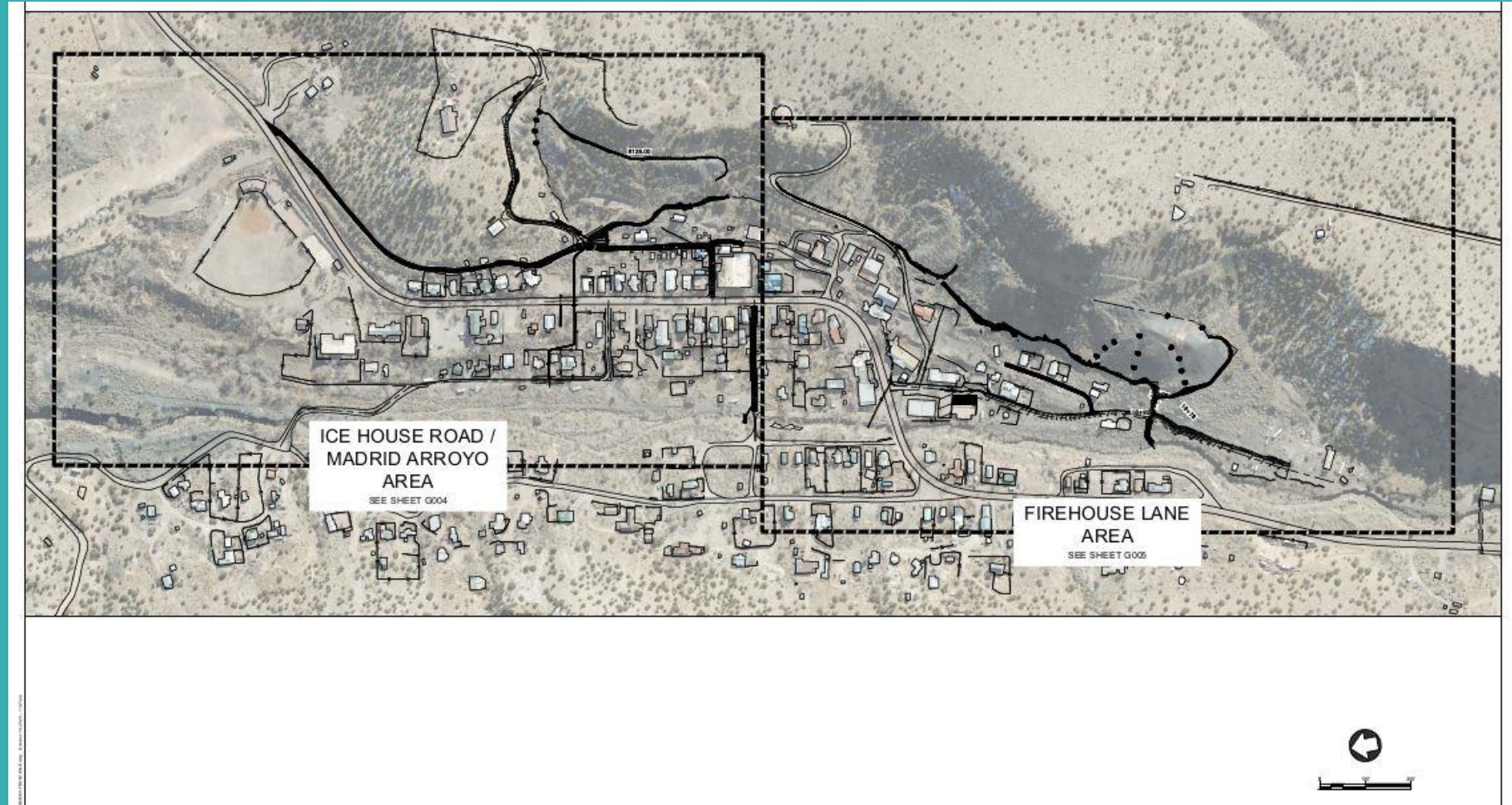
- *Need:* Address human health and safety concerns from hazards associated with the remnants of mining activities, including excessive erosion, flooding, and open mine features, as well as address fire suppression insufficiencies in Madrid.
- *Purpose:* To safeguard the public from these hazards while preserving the historic mining landscape.

Requires assessing environmental impacts from a range of alternatives that meet the Purpose and Need and a No Action Alternative:

- *No Action Alternative-* no work would be done, acts as a baseline
- *Proposed Action Alternative-* AML Program and public preferred alternative
- *Alternative B-* similar but more intensive stormwater management actions

PROPOSED ACTION

- Close mine adit feature
- Water tank and fire suppression system
- Stormwater improvements



Proposed Action Overview
– Photo Courtesy of Weston

Proposed Action- Mine Closure

Stormwater and erosion have opened a previously backfilled feature.
Proposed Action would close by:

- Manual or mechanical filling with soil and rock, waste material, and/or polyurethane foam
- Structural barrier



Open Mine Feature
– Photo Courtesy of AML

Proposed Action- Mine Closure

Stormwater and erosion have opened a previously backfilled feature.
Proposed Action would close by:

- Manual or mechanical filling with soil and rock, waste material, and/or polyurethane foam
- Structural barrier



Polyurethane foam closure with drainage cap
– Photo Courtesy of AML

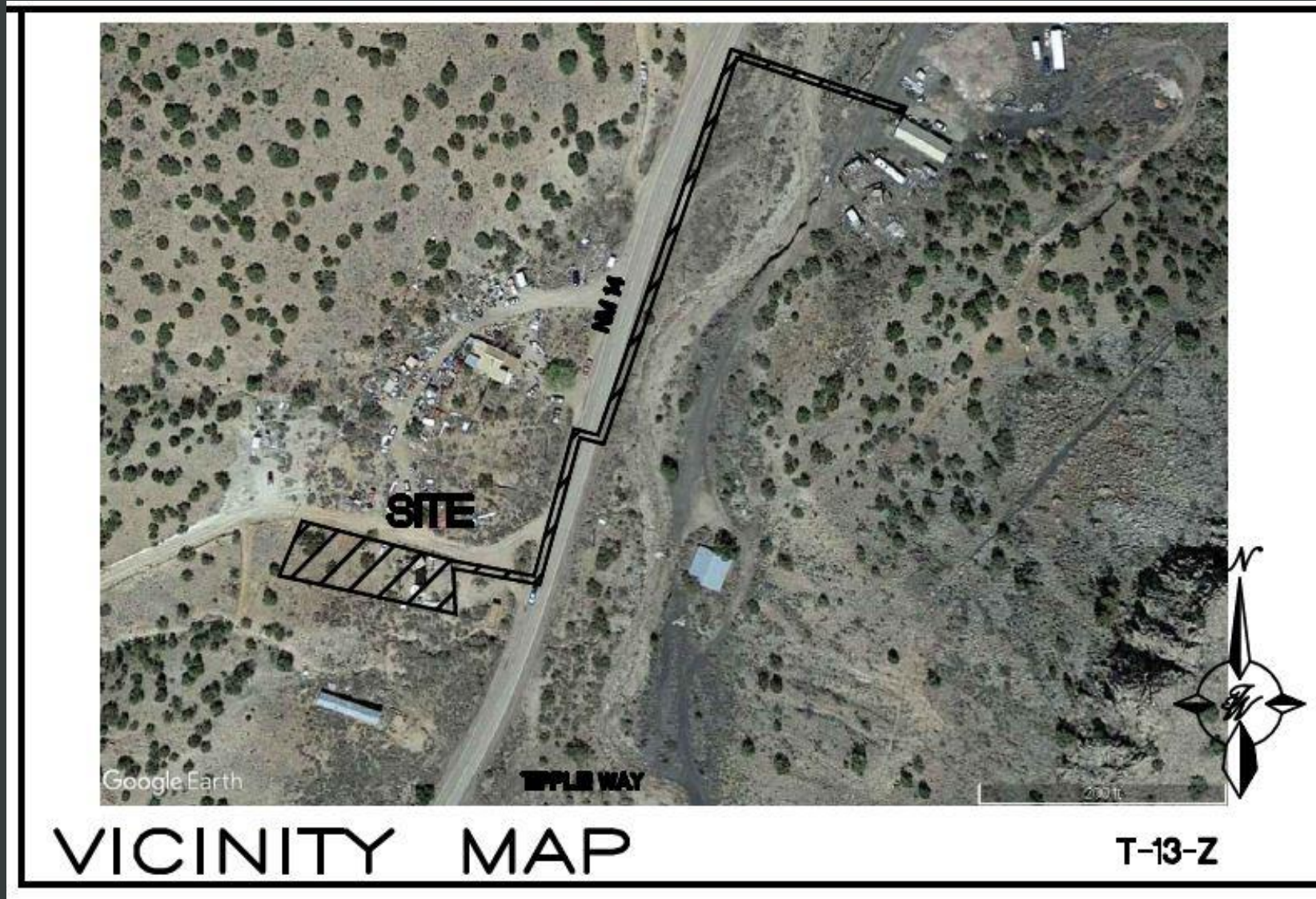
Proposed Action- Fire Suppression System

- Purpose: to meet Santa Fe County code requirements for fire suppression water volume and pressure
- New 125,000 gallon water tank
- Transmission pipeline- crosses south of Madrid and connects to existing pipeline near fire house
- Less disruptive
- Less potential for underground utility interference



Current Water Tank
– Photo Courtesy of AML

Proposed Action- Fire Suppression System



Water Tank
Project Area
– Image from
Tierra West
plans

Proposed Action- Stormwater Controls

ICE HOUSE ROAD

Bethlehem Hill Road

- earthen rolling dips, cobble rock rundowns, cobble swales directing into a stormwater conveyance channel

Bethlehem Hill Arroyo

- Zuni bowls, plunge pools, one-rock dams decrease erosion

Proposed Action- Stormwater Controls

ICE HOUSE ROAD

Ice House Road

- Re-graded with crowned gravel cross-section
- Sediment pond for stormwater
- Three channel intercepts with rock-lined channel to capture and directs stormwater away from private property (hidden from village view)

Soil Disposal Area

- Regrade gob piles, cover with excess material from Arroyo improvements, revegetate
- Add drainage and gob toe treatment

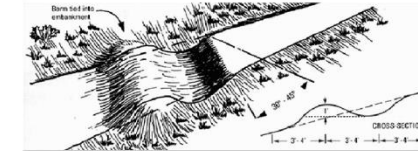


ROCK RUNDOWN

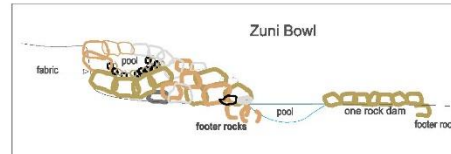


WB—

WATER BAR

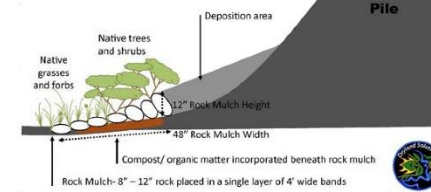


ZUNI BOWL



GOB TOE TREATMENT

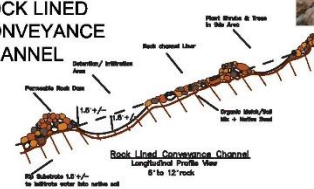
Gob Pile Runoff Treatment:
Rock Mulch Detail



MEDIA LUNA



ROCK LINED CONVEYANCE CHANNEL



DROP STRUCTURE



SHEET

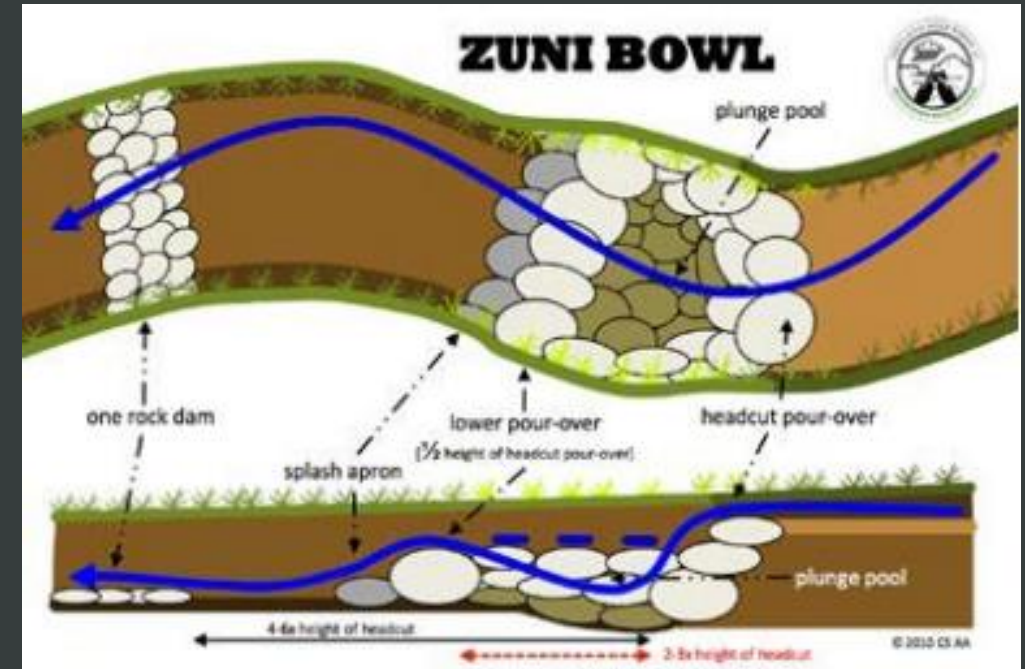
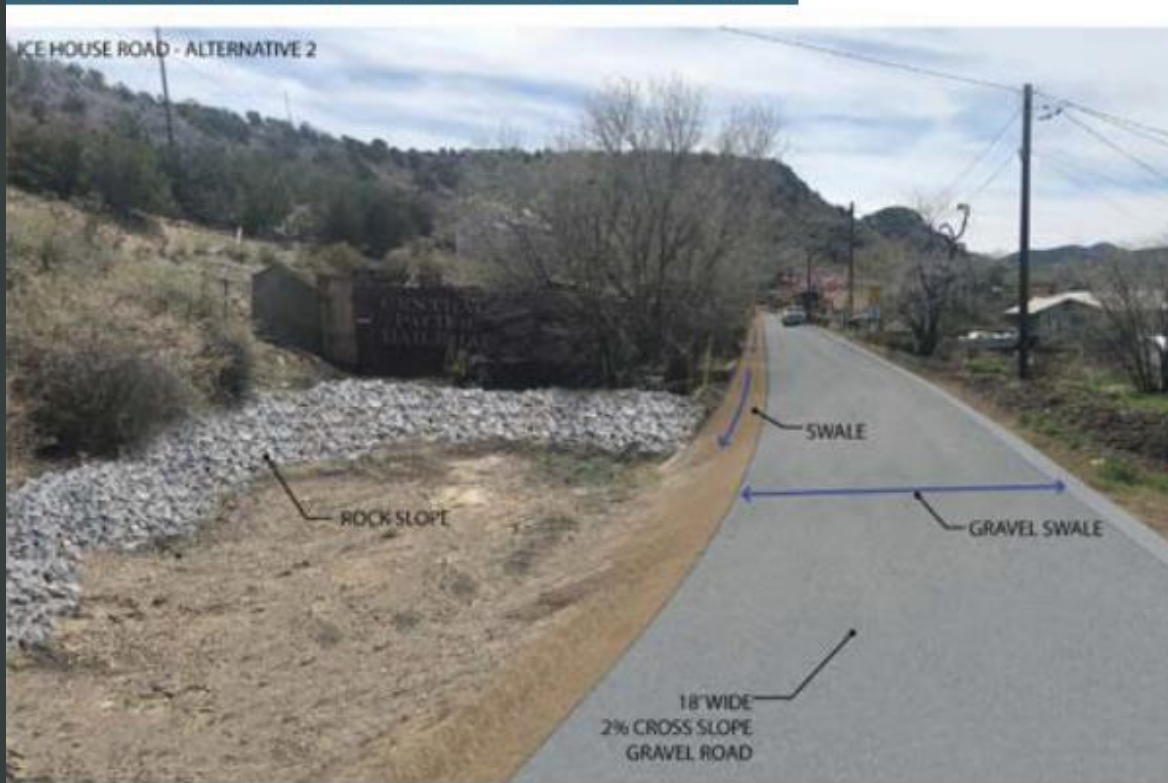
	4
	OF

5

6/28/13

Proposed Action- Stormwater Controls

FIGURE 1. Potential Improvements to Ice House Road



Proposed Action- Stormwater Controls

MADRID ARROYO AND CAVE ROAD

Cave Road

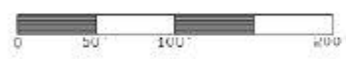
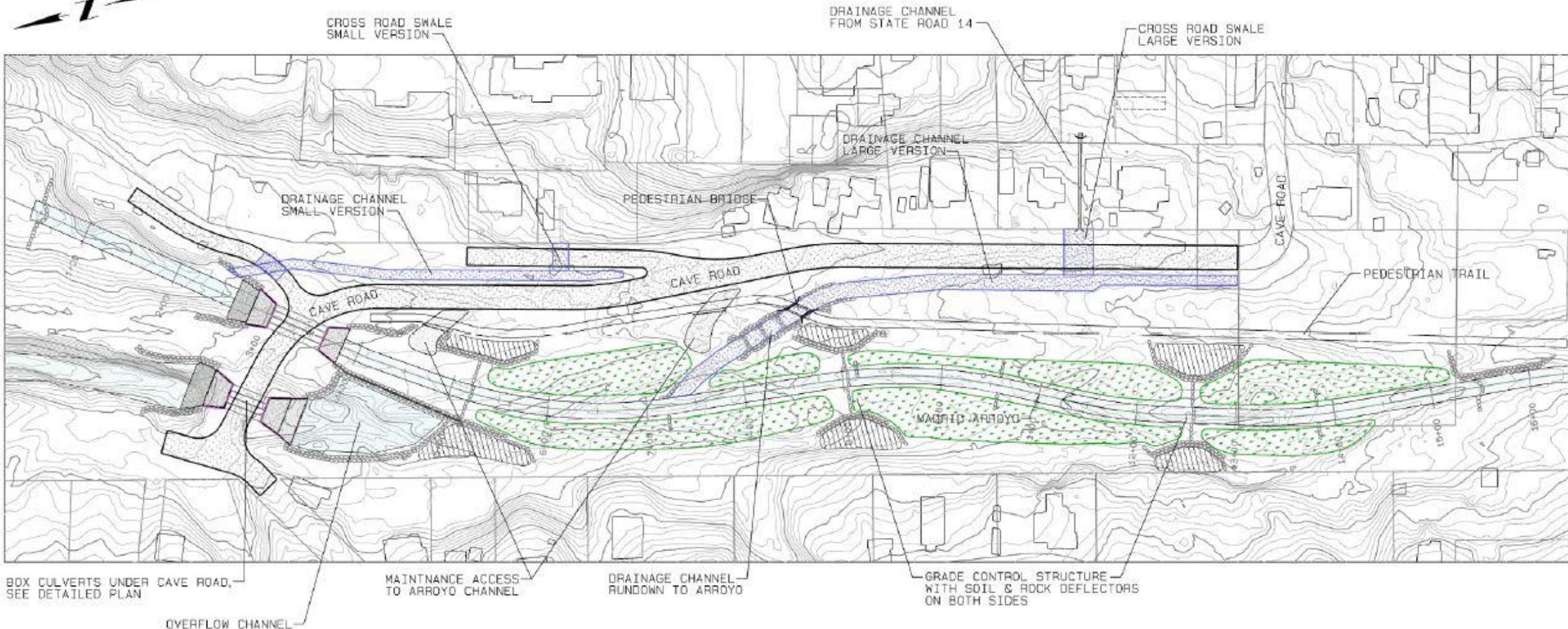
- re-grade with rock-lined swale and gravel roadway
- two bifurcated roadways (east and west) for local access and Arroyo crossing
- Excess fill from Arroyo added to old railroad grade between Cave Rd and Arroyo to prevent flooding
- Two channels with box culverts installed at Arroyo crossing

Bridge Street

- re-graded with additional base coarse material
- install center valley gutter and drainage inlet drop structure into Madrid Arroyo

Madrid Arroyo

- main channel would be re-graded, with rock and soil deflectors installed within channel
- native seed mix and plantings to stabilize soils



Proposed Action- Stormwater Controls

MADRID ARROYO AND CAVE ROAD



Rock-lined Swale



Channel with box culverts



Rock Deflector

Proposed Action- Stormwater Controls

FIREHOUSE LANE

Firehouse Lane

- Rock-lined gravel roadway channels water into Arroyo and existing drop inlet structure
- Add drainage structure midway
- North of drainage structure, re-grade to inverted crown gravel roadway

East Gob Piles

- Zuni bowls, plunge pools, one rock dams, and rock rundowns in higher elevations
- Trapezoidal channels at toes

Red Dog Road

- Re-graded with more base coarse material
- Rock-lined ditch above road to channel stormwater into existing culvert under Firehouse Ln

[illegible]

Alternative B

- **Close mine adit feature**
 - No difference from Proposed Action
- **Water tank and fire suppression system**
 - Same 125,000-gallon water tank
 - Pipeline along west side of highway and crosses under at bend
- **Stormwater improvements**
 - Intensive level of service needing less maintenance
 - More visually obtrusive in Madrid's historical setting

Alternative B- Stormwater Controls

ICE HOUSE ROAD

- Paved standard and inverted crown road improvements
- Storm drain pipes
- Large detention pond
- Rock-lined stormwater diversions
- **Soil Disposal area**
 - Reclaim/ cover gob piles
 - Revegetate
 - Add drainage and gob toe treatment

Alternative B- Stormwater Controls

MADRID ARROYO AND CAVE ROAD

Cave Road

- Re-grade with rock-lined swale and gravel roadway
- Excess fill from Arroyo added to old railroad grade between Cave Rd and Arroyo to prevent flooding
- Two channels with box culverts installed at Arroyo crossing

Bridge Street

- Paved
- Install center valley gutter and drainage inlet drop structure into Madrid Arroyo

Madrid Arroyo

- Main channel would be re-graded with rock and soil deflectors installed within channel
- Native seed mix and plantings to stabilize soils

Alternative B- Stormwater Controls

FIREHOUSE LANE

- Paved standard roads
- Storm drain pipes
- Rock-lined stormwater diversions
- Sediment basins

Red Dog Road

- Paved
- Rock-lined ditch above road to channel stormwater into existing culvert under Firehouse Ln

Madrid Stormwater and Erosion Control Alternative Comparisons

PROPOSED ACTION	ALTERNATIVE B	NO ACTION ALTERNATIVE
➤ Close mine adit feature	➤ Close mine adit feature (same as PA)	➤ Leave mine adit feature open
➤ Water tank and fire suppression system	➤ Water tank and fire suppression system (different pipeline route)	➤ No new water tank and fire suppression system improvements
➤ Stormwater improvements: medium level of service needing periodic maintenance	➤ Stormwater improvements: intensive level of service needing less maintenance	➤ No stormwater improvements

Effects Comparisons- Cultural Resources

PROPOSED ACTION

Beneficial Effects

- Historical features protected from stormwater, erosion, and fire

Adverse Effects

- May disturb sites physically and/or visually
- Memorandum of Agreement (MOA)- Describes in detail effects from proposed action activities and data recovery and alternative mitigations
- Mitigation measures may include monitoring, 50 feet avoidance buffer, barrier fencing, color blending, reducing visuals

ALTERNATIVE B

Beneficial Effects

- Historical features *better* protected from stormwater and erosion (same fire benefit)

Adverse Effects

- *Greater* adverse impact- more disturbance, more visual impact
- Similar mitigation measures

NO ACTION ALTERNATIVE

Beneficial Effects

- No change from the current historical setting (except continual damage from stormwater/erosion)

Adverse Effects

- No increased protection from stormwater, erosion, or fire improvements

Effects Comparisons- Visual Resources

PROPOSED ACTION

Beneficial Effects

- Decrease deterioration

Adverse Effects

- Construction visuals
- Stormwater features visible though natural looking

ALTERNATIVE B

Beneficial Effects

- Decrease deterioration

Adverse Effects

- *Greater* construction visuals
- Stormwater features *more* visible

NO ACTION ALTERNATIVE

Beneficial Effects

- No change from the current historical setting

Adverse Effects

- Stormwater/erosion issue continue to degrade area

Effects Comparisons- Water Resources

PROPOSED ACTION

ALTERNATIVE B

NO ACTION ALTERNATIVE

Beneficial Effects

- Redirect arroyo to historic channel
- Reduced runoff and sedimentation
- Improved water quality

Beneficial Effects

- Redirect arroyo to historic channel
- *Greater* reduced runoff and sedimentation
- *Greater* improved water quality

Beneficial Effects

- none

Adverse Effects

- Short-term construction

Adverse Effects

- *Greater* short-term construction

Adverse Effects

- No channel improvements
- No runoff/sedimentation prevention
- No improved water quality

Effects Comparisons- Wildlife

PROPOSED ACTION

Beneficial Effects

- Remove entrapment hazard (mine)
- Reduced habitat degradation from stormwater/erosion

Adverse Effects

- Limited habitat disturbance
- Short-term avoidance/entrapment potential

ALTERNATIVE B

Beneficial Effects

- Remove entrapment hazard (mine)
- *Greater* reduced habitat degradation from stormwater/erosion

Adverse Effects

- Limited habitat disturbance
- *Greater* short-term avoidance/entrapment potential

NO ACTION ALTERNATIVE

Beneficial Effects

- None

Adverse Effects

- Mine entrapment hazard remains
- Habitat degradation continues

Effects Comparisons- Vegetation & Soils

PROPOSED ACTION

ALTERNATIVE B

NO ACTION ALTERNATIVE

Beneficial Effects

- Soil disposal reclamation area; the revegetation will improve drainage and erosion control
- Native seeding/plantings within Madrid Arroyo
- Reduced erosion

Adverse Effects

- Limited construction impacts
- Potential for weeds

Beneficial Effects

- *More* native seeding/plantings within Madrid Arroyo
- *More* reduced erosion

Adverse Effects

- Limited construction impacts
- Potential for weeds

Beneficial Effects

- None

Adverse Effects

- Continued erosion

Effects Comparisons- Human Health and Safety

PROPOSED ACTION

Beneficial Effects

- Reduce flooding conditions
- Improved traffic, residence, and business safety
- Remove mine hazard

Adverse Effects

- None

ALTERNATIVE B

Beneficial Effects

- *Greater* reduced flooding conditions
- *Greater* improved traffic, residence, and business safety
- Remove mine hazard

Adverse Effects

- None

NO ACTION ALTERNATIVE

Beneficial Effects

- None

Adverse Effects

- Continued flooding and erosion threats
- Continued fire suppression inadequacy
- Mine hazard remains

Effects Comparisons- Socioeconomic Conditions & Environmental Justice

PROPOSED ACTION

ALTERNATIVE B

NO ACTION ALTERNATIVE

Beneficial Effects

- Reduced risk of property damage
- Decreased insurance rates
- In line with Madrid community input

Beneficial Effects

- *Greater* reduced risk of property damage
- Decreased insurance rates

Beneficial Effects

- None

Adverse Effects

- Temporary construction impacts

Adverse Effects

- Temporary construction impacts
- Potential economic impact from more visual improvements
- Less favorable alternative from Madrid community input

Adverse Effects

- Continued risk of property damage
- Not favorable to Madrid community

Effects Comparisons- Transportation & Recreation

PROPOSED ACTION

Beneficial Effects

- Improved road conditions
- Improved recreation conditions

Adverse Effects

- Temporary closures/limited access

ALTERNATIVE B

Beneficial Effects

- *Greater* improved road and recreation conditions with *less maintenance*

Adverse Effects

- *Longer* temporary closures/limited access

NO ACTION ALTERNATIVE

Beneficial Effects

- None

Adverse Effects

- Continued road and recreation area degradation

Madrid Stormwater and Erosion Control Project Schedule

January 8 - February 7:	Open Comment Period On Environmental Assessment
February:	Analyze Comments Received
February:	Conduct Additional Cultural Survey On Added APE
March - April:	Finalize Environmental Assessment
April - May:	Post Final EA, Finding Of No Significant Impact, And Decision Record Followed By 30-day Objection Period
Begin Work – Late Summer:	Water Tank Installation
Winter 2024/2025:	Hillside And Arroyo Work Following Bid Procurement



Question/Answer & Comment Session

**PLEASE SUBMIT ADDITIONAL COMMENTS OR QUESTIONS
BY FEBRUARY 7, 2024 TO:**

Hillary Robbie

Grouse Mountain Environmental Consultants

3600 Cerrillos Road, Suite 407

Santa Fe, NM 87507

Phone – 505.930.5166

Email – Madrid_EA_Comments@gmecnm.com

Thank you for participating!

APPENDIX C. PUBLIC MEETING SIGN-IN SHEET

Public Information Meeting Madrid Stormwater and Erosion Control Project

Santa Fe County, New Mexico

Madrid Firehouse

5 Firehouse Ln Madrid, NM 87010

Thursday, January 25th, 2024



PLEASE SIGN IN & PRINT LEGIBLY

NAME	AFFILIATION	ADDRESS	PHONE	EMAIL
Clinton Anderson	Madrid Landowners' Association	P.O. Box 872 Madrid, NM 87010		Clint. Anderson- 10622@gmail.com
Adeline Murthy	Santa Fe County	100 Catron St. Santa Fe, 87501	505-995- 2774	amurthy@santafe countynm.gov
Monica Harmon	Santa Fe County	100 Catron St Santa Fe, 87501	505-992 9825	mharmon@santafe countynm.gov
James Hollen	MMD AML	1220 S. St. Francis St 87505	505 231 8332	james.hollen@mmd.nm.gov
PAUL Dickson	Landowner	P.O. Box 40034 ABQ 87196	505 350 6785	PWease1Dickson@ gmail.com
WATT LEIMBACH	Water Operator	PO BOX 715 Cerrillos NM 87010	505 206 2388	Sun Water matt @gmail.com
Meghan McDonald	MMD AML	1220 S. St. Francis Dr. Santa Fe, NM 87110	505-629- 9872	meghan.mcdonald@ emnr.nm.gov
Lloyd Moide	MMD-AML	" " " "	505-629- 3757	
ELLEN DIETRICH	MCP	51 Goldmine Rd Cerrillos 87010	505-474- 6535	dielrich@ gmail.com
Andrew Zink	AML			andrew.zink@emnr.nm.gov

NAME	AFFILIATION	ADDRESS	PHONE	EMAIL
Jethro Bowden	Madrid Water	129 Camino Los Abuelos, SF 87508	505-473 7160	
Gavin Strathdee		2857 NM 14 MADRID 87010-9752	(505)	471-7296
Robert Ederer	Western Solus	Albg. NM	505-331-112	rob.ederer@westernsolus.com
Chris Phillips	Riverband Eng	Albg, NM		
Leland Murray	AML	ABQ, NM	505-629-6977	
Curt Temple	Santa Fe County	SF	505-490 2691	CTemple@santafecountynm.gov
Mike Baca	MADRID	2878 NM 14	505 501 2502	COYOTETECH@SABO.COM
Sue Nordman	MCA	2 Camino No Es, Madrid	734-646-7291	susan.nordman@att.net
Kiera Quinn	MCP	07 Backroad, 2873 Hwy 14	214-288-0439	kierark@gmail.com
Mark Bremer	MCA, MCP	3 Opera House Road, Madrid		markdb_2001@yahoo.com
José Dominguez	MLA & MCP	23 FIREHOUSE Lane	on file	
REBECCA NAFEE	MLW MADRID MCA	2876 NM 14		
CHRISTIN DOYP	SF County	31 WHITEWOLF RD., Corralitos	505.570 4700	FLYGIRLIRON@GMAIL
DENISE GRAY	LAND OWNER	10 FIREHOUSE LANE	501 699 1090	DGRAY839@GMAIL.COM
STEVE EITER	OWNER	24, 28 Backroad 5 Bridge Rd	202-285 8350	STEVEEITER@YAHOO

[illegible]

APPENDIX D. COMMENTS RESPONSE REPORT

Comment No.	Name	Issue/Comment	Date	Response
1	Stephane Lara	Request not to include the destruction of the arroyo.	1/29/2024	Comment is noted. The AML Program is planning to provide a more detailed site plan in the next set of engineering designs. A revegetation plan will also be created. An additional public meeting will occur to present these updated plans for the Arroyo.
2	Nick Sekunda	Against the "Arroyo Demolition Project". Not opposed to stormwater features but does not want to have the Greenbelt bulldozed.	1/30/2024	Comment is noted. The AML Program is planning to provide a more detailed site plan in the next set of engineering designs. A revegetation plan will also be created. An additional public meeting will occur to present these updated plans for the Arroyo.
3	Amanda Bramble	I'm concerned about where the water is getting redirected to and the fact that a lot of erosion is going to happen in the area if it's not prepared for that extra water. I live right downstream of that area so I'm very concerned; I just walked out there this morning took a bunch of pictures so please call me back	1/26/2024	<p>Stormwater is directed to the arroyo at three locations – Bridge Street, Cave Road drainage way, and Firehouse Lane south of Red Dog Lane. No extra water will be managed.</p> <p>Hydrologic and hydraulic modeling has been completed for the Madrid arroyo reach by URS in 2011. The purpose of the design features is to slow the water down before discharging to the arroyo. A detention pond is planned for Ice House road area which will also “slow the water” and reduce sedimentation. We have not designed any stormwater infiltration infrastructure.</p> <p>Water directed to County parcel No. 1 will be limited in quantity due to the limited capacity of the box culverts under Cave Rd. Only about 10% of the 100-yr flood will flow NE to the County parcel. We plan to construct multiple small rock grade control structures in this NE reach of the arroyo, to prevent erosion. Also, a larger grade control structure will be built at the north end of this parcel to prevent headcutting.</p>
4	Michael Lancaster	The area known as Greenbelt must not be dozed, scraped clean, or otherwise destroyed. It is an environmental and community asset and this would be a major mistake. We are asking that it be left alone and the project should study other ways to allow water to pass through. Please offer the community an alternative approach.	1/29/2024	Comment is noted. The AML Program is planning to provide a more detailed site plan in the next set of engineering designs. A revegetation plan will also be created. An additional public meeting will occur to present these updated plans for the Arroyo.
5	Mark Bremer	<p>I found a “Save the Arroyo” flyer in my mailbox this morning and was immediately dismayed by the complete one-sided portrayal of the issues related to the modification of the arroyo. Not to mention the misplacement of the “Footbridge” arrow some 200 feet closer to the north than in reality. The “Limits for Clearing, Grubbing and Removal” do not extend to the footbridge some 200 feet upstream of drawing edge.</p> <p>The flyer presents the Madrid Arroyo Demolition Plan with the following added statements: *EVERYTHING INSIDE THIS BOUNDARY WILL DIE *AML/Santa Fe County want to BULLDOZE the arroyo. *The StormWater & Erosion Project does NOT have to include the destruction of the ecosystem. *CALL OR EMAIL AND TELL THEM TO DROP THE "MADRID ARROYO DEMOLITION PLAN" FROM THE PROJECT</p> <p>I took a stand and sent the following e-mail to Amanda Bramble who apparently has influence in the community and will be hosting a radio show tonight on KMRD.fm (96.9 FM Radio), Tuesday, January 30 at 5:00 pm according to their on-line schedule, to discuss this issue.</p> <p>Here are my concerns:</p> <p>No mention was made of the vastly improved sediment transport in the arroyo with the proposed action. This increased transport of sediment will reduce the flooding to neighboring homes, three of which are at-risk due to the 100-year flood now and will be outside that benchmark floodplain with the proposed action. Without a mature and full plant succession riverbed cross-section to properly function and convey sediment, protect vegetated soils, trees and large shrubs in the proposed floodplains, the floods for the community will only expand as the sediment continues to build.</p> <p>The constant disturbance of this area, by constantly being subjected to increased and deposited sediment, is evidenced by the profusion of first succession plants that initially colonize disturbed soils namely tumbleweed and rag weed (Kochia). There are large areas of weed infestations. Also there are few large trees and widely disbursed. When the 2013 mega-storm came and went so did most of the vegetation saving only the large Siberian elms and large sage/rabbit/saltbush brush. With a dedicated incised riverbed and dedicated and stabilized floodplain in the proposed action, more trees and shrubs will be able to survive as the water velocities will be minimized in a floodplain to the survival of more plants.</p>	1/30/2024	Comment is noted.

Comment No.	Name	Issue/Comment	Date	Response
		<p>I fully expect the forest density on the proposed floodplains will not only increase in numbers, but exponentially increase the diversity of surrounding plant life. This is in addition to an expanded number of bird habitats and nesting opportunities. I also see profound improvement of the downstream arroyo which will receive additional moisture from the return of a historical low-flow storm flows as planned.</p> <p>Without seeing both sides - and there are many other issues than just sediment transport as mentioned above, then the one-time only opportunity to return this arroyo to its pre-developed condition may be lost forever. And without seeing both sides, the increased diversity, abundance, soil stabilization, and flood protection for our neighbors will be lost. The flyer just might do the trick.</p>		
6	Jane Butler	I live in Madrid New Mexico I wanted to ask you to drop the Madrid Arroyo Demolition Plan from the project here in Madrid	1/29/2024	Comment is noted. The AML Program is planning to provide a more detailed site plan in the next set of engineering designs. A revegetation plan will also be created. An additional public meeting will occur to present these updated plans for the Arroyo.
7	Molly Dietze	Please drop the arroyo destruction portion of the project.	1/31/2024	Comment is noted. The AML Program is planning to provide a more detailed site plan in the next set of engineering designs. A revegetation plan will also be created. An additional public meeting will occur to present these updated plans for the Arroyo.
8	Andrew Wice	I would like to express my opposition, in the strongest possible terms, to the aspect of this project called "Madrid Arroyo Demolition Plan." This destructive plan will have no positive impact on erosion or flood control. The negative impact is obvious: complete destruction of a functioning open natural ecosystem. The demolition of the arroyo is a terrible idea, and it must be stopped. I have lived next to the arroyo for 25 years and I enjoy walking through it every single day. I strongly oppose the demolition of the arroyo. The rest of the project is fine.	1/31/2024	Comment is noted. The AML Program is planning to provide a more detailed site plan in the next set of engineering designs. A revegetation plan will also be created. An additional public meeting will occur to present these updated plans for the Arroyo.
9	Ryan Dorais	Drop the Madrid Arroyo Demolition Plan.	1/31/2024	Comment is noted. The AML Program is planning to provide a more detailed site plan in the next set of engineering designs. A revegetation plan will also be created. An additional public meeting will occur to present these updated plans for the Arroyo.
10	Lori Ottino	Hi, My name is Lori Ottino and I am a business owner, resident and landowner in Madrid NM. I am writing to request that the Madrid arroyo demolition plan be dropped from the project. There is a very delicate ecosystem that has rebuilt itself and would be destroyed by bulldozing the arroyo.	1/31/2024	Comment is noted. The AML Program is planning to provide a more detailed site plan in the next set of engineering designs. A revegetation plan will also be created. An additional public meeting will occur to present these updated plans for the Arroyo.
11	Barbara Harnack	I wanted to let the committee know I feel this design proposed is heavy handed. The Madrid Green Belt has been in the making for many years and is part of the village for many reasons, garden, walks, nature. I am hoping something can be designed that can preserve this Green Belt as much as possible. Thank you for reading my comment	1/31/2024	Comment is noted. The AML Program is planning to provide a more detailed site plan in the next set of engineering designs. A revegetation plan will also be created. An additional public meeting will occur to present these updated plans for the Arroyo.
12	Sue Nordman	As I'm sure you realize by now, many Madrid residents are up in arms about the proposed plans for rerouting the arroyo and removing decades of sediment. Would you consider planning a trip to Madrid on a specific day and time where you would lead us local residents on a walk through the arroyo with you and educate us as to the reasons and whys the arroyo will be rerouted and the vegetation uprooted? I personally find it hard to ultimately visualize the plans on paper and would welcome the opportunity to walk the land with the engineers and to be able to ask direct questions about specific places. I think it would go a long way to help ease the animosity that is being voiced.	1/31/2024	Comment is noted. The AML Program is planning to provide a more detailed site plan in the next set of engineering designs. A revegetation plan will also be created. An additional public meeting will occur to present these updated plans for the Arroyo.

Comment No.	Name	Issue/Comment	Date	Response
13	Betsy Burke	<p>I am distressed by the proposed plan to destroy the ecosystem of the Madrid arroyo, namely, to bulldoze it. There is much wildlife here!:</p> <ul style="list-style-type: none"> - ground and tree nesting BIRDS - SQUIRRELS, FIELD MICE, and other SMALL MAMMALS - GRASSES, CHAMISA, TREES and MANY OTHER PLANTS - INSECTS including ground nesting BEES <p>Plus it is a wildlife corridor for BOBCATS, COYOTE, DEER and MORE.</p> <p>You will also be destroying NATURAL BEAUTY, the element that inspires artists and every citizen here.</p> <p>Also, it cuts through the HEART of the village. It connects us. Many of us walk there, walk our children and our dogs there every day. Can you please not destroy this important natural space we know, cherish, and utilize daily?</p> <p>I am a filmmaker living in Madrid, and have lived here for almost 20 years. To annihilate the natural beauty here, to annihilate the home for so much life, chills me to the bone. PLEASE PLEASE PLEASE drop the "Madrid Arroyo Demolition Plan" from your project. Thank you! Below is the link to the feature film I recently shot in Madrid. It employed many New Mexicans. If you bulldoze the arroyo, Madrid will cease to be a usable location for filming. Hence: lost revenue for the state. Many films have been shot here. https://www.imdb.com/title/tt28106043/</p>	1/31/2024	<p>Comment is noted. The AML Program is planning to provide a more detailed site plan in the next set of engineering designs. A revegetation plan will also be created. An additional public meeting will occur to present these updated plans for the Arroyo.</p>
14	Amanda Bramble	<p>Redirected water to new/old stream channel. Has railroad bed going through her land so has done work and USACE permit to bring water where it used to go. Draft EA says it would not need a USACE, but there are concerns having stormwater going there. Redirected over 100 years ago. Covered with coal, big head cut will just wear away and destroy the area. By redirecting it there will just increase the water/sediment dropping there. She's going to need to stabilize her access this year. If more water/coal after the greenbelt and downstream issues. Next proposal more acceptable if better reclamation plan- taking out the middle but not affecting the banks, even though there may be less capacity for holding water, less disturbance = community acceptance.</p>	2/1/2024	<p>Regarding the USACE permit, this was an error during the presentation. AML has an approved Nationwide Permit from the USACE for the portion of the project in the Madrid Arroyo. This is described in the EA (Section 3.4.2) and the permit is included in Appendix D.</p> <p>Prior to the NWP 37 approval, the AML program conducted a walk-through with the USACE Albuquerque District Archaeologist and Regulatory Specialist on March 22, 2023. As a result of this meeting the USACE also signed our Memorandum of Agreement (Appendix C) as a concurring party, indicating they agree with the proposed mitigation effects to cultural resources. In addition, the AML Program has received confirmation from the NM Environmental Department that our Pre-Construction Notification provided to the USACE is consistent with the 2021 Clean Water Act Section 401 Water Quality Certification (WQC) for the 41 Nationwide Permits, pursuant to WQC Condition 1. As our project will be disturbing more than one acre, our program will also be applying for a Section 402 (NPDES) permit from the EPA prior to construction.</p> <p>The AML Program does not have permission to work on Elizabeth Davis property north of the project area. No work is currently planned for this area.</p> <p>Stormwater is directed to the arroyo at three locations – Bridge Street, Cave Road drainage way, and Firehouse Lane south of Red Dog Lane. No extra water will be managed.</p> <p>Hydrologic and hydraulic modeling has been completed for the Madrid arroyo reach by URS in 2011. The purpose of the design features is to slow the water down before discharging to the arroyo. A detention pond is planned for Ice House road area which will also “slow the water” and reduce sedimentation. We have not designed any stormwater infiltration infrastructure.</p> <p>Water directed to County parcel No. 1 will be limited in quantity due to the limited capacity of the box culverts under Cave Rd. Only about 10% of the 100-yr flood will flow NE to the County parcel. We plan to construct multiple small rock grade control structures in this NE reach of the arroyo, to prevent erosion. Also, a larger grade control structure will be built at the north end of this parcel to prevent headcutting.</p>
14	Amanda Bramble	<p>There's no plan for revegetation in the EA. – Just one sentence isn't enough. Alt B says more extensive plantings. Would be more confidence if less vague. Is watering regime part of this. More detailed reclamation plan needed. Want actual plants. Raked and mulched? Time of year? What species planted and watered.</p>	2/1/2024	<p>Comment is noted. The AML Program is planning to provide a more detailed site plan in the next set of engineering designs. A revegetation plan will also be created. An additional public meeting will occur to present these updated plans for the Arroyo.</p>
14	Amanda Bramble	<p>Design not to affect Arroyo Channel bank slope; design to confine Firehouse Channel disturbance to channel bottom; design match capping materials to existing railroad grade material Engineered plan- doesn't show this</p>	2/1/2024	<p>Grading in the arroyo channel area will not affect the west side slope of the arroyo and will not disturb the known cultural sites in this area. The old railroad grade in the middle of the arroyo open space will have a limited amount of soil placed on top to achieve the flood protection needed on the east side of Cave Road. The railroad grade (plus soil cap) will become the pedestrian trail through the middle of the open space and will be surfaced with a crushed gravel.</p>

Comment No.	Name	Issue/Comment	Date	Response
14	Amanda Bramble	Want to see lots of material in the middle removed even though it will be destructive at first.	2/1/2024	Comment is noted. The AML Program is planning to provide a more detailed site plan in the next set of engineering designs. A revegetation plan will also be created. An additional public meeting will occur to present these updated plans for the Arroyo.
14	Amanda Bramble	I want to see it happen but probably needs less impact for it to be more acceptable.	2/1/2024	Comment is noted. The AML Program is planning to provide a more detailed site plan in the next set of engineering designs. A revegetation plan will also be created. An additional public meeting will occur to present these updated plans for the Arroyo.
15	Paula Zima	<p>I'm writing to beg you to rethink a very bad idea. The arroyo which is right next the very center of the tiny town of Madrid, south of Santa Fe, NM has been functioning just fine. There are lots of other places that need cleaning up in a thoughtful manner. However bulldozing a quiet, beautiful area, home to the residents and wildlife in the area is NOT one of them. Madrid is struggling to remain a viable town, the people there rely on tourism. If you visit the town on a non-tourist day you would understand this. To bulldoze the arroyo right next to the little town, would be ruining the look of the town, a place enjoyed by the people as well as the wildlife.</p> <p>The arroyo is causing no problems, no one there can remember a time when it has.</p> <p>You may have future plans? Perhaps a bypass highway? That might be one reason for doing this, if so let us know so we can protest that as well.</p>	2/1/2024	Comment is noted. The AML Program is planning to provide a more detailed site plan in the next set of engineering designs. A revegetation plan will also be created. An additional public meeting will occur to present these updated plans for the Arroyo.
16	Unknown	<p>He said he has lived on Cave Road for the past 10 years. He completely disagrees with the whole premise of the Madrid Stormwater project</p> <p>Concerns: Trying to address a need that no one feels is an issue. No one in this town is asking for what is being proposed, He has never heard one person in Madrid ask to be saved from stormwater, He feels it is misspent money, "Don't know why anyone feels they need to manage this section of the world with heavy equipment", He and his friends love walking the arroyo the way it is. Its natural, they don't need a trail, it is a trail , Yes during heavy precipitation events traffic can be blocked, but it goes away quickly, A two lane road on Cave Road is the dumbest thing ever, he very rarely if ever needs to wait for someone to pass on the road, The improvements will drive rent and land prices up for the residents, These projects take all the cool funkiness out of the town, The improvements are one more step that makes it easier for rich people to make Madrid an extension of South Santa Fe, He sees all the construction going on in Santa Fe and it is gross, he doesn't want it in Madrid, Again, one more little way of ruining a funky part of New Mexico, Madrid has a lot more problems that the money would be better spent on. Spend it on meth programs, helping drug addicts, or save an endangered species.</p>	2/1/2024	<p>The Madrid Stormwater and Erosion Control project has been developed with input from the Madrid community for years- this includes the need for stormwater and erosion control as well as the desire for the new water tank for fire suppression. As for the Arroyo, the AML Program is planning to provide a more detailed site plan in the next set of engineering designs. A revegetation plan will also be created. An additional public meeting will occur to present these updated plans for the Arroyo.</p> <p>The AML Program's proposed designs to Cave Road would increase the width of Cave Road to 24', which would allow for two lane traffic; however, the AML only intends to improve the roadway, but will not be applying road striping. Expanding Cave Road to 24' would also allow for greater emergency and service vehicle access to homes along Cave Road and on Back Road compared to its current state.</p> <p>These improvements are designed to blend in with the Madrid environment. They are not designed to raise costs for residents and should decrease insurance rates. The money for this project comes from a fee levied on active coal mines as well as funds from the Bipartisan Infrastructure Law (BIL), also known as the Infrastructure Investment and Jobs Act, and must be used for projects involving abandoned mine reclamation.</p>
17	Paula Zima	I live just north of Madrid in Santa Fe and we the people in Madrid are really concerned. Apparently AML and Santa Fe county wants to bulldoze the Arroyo that is right there in the middle of town, not on the street but it's right behind the main building. The effect of doing that is not good. You have wildlife that lives there at the corridor, you have a small town that's struggling to survive, and it survives on tourism. Anytime you do something like that it creates more problems, it's a really dumb idea so whoever has that idea I hope that they can just let that be and go on and do something that really needs to be done like Ice road that they have there in in Madrid. It definitely needs to some help but that that little Arroyo does not; it would ruin the look of the town and it would ruin the town for the people that live around it with a very hideous and awful looking scar, out of place, for basically no purpose at all. So I'm just really urging you, whoever you know that can stop the work, put it towards something important not this. This is not a good thing to do, it's a dumb thing to do. Okay we're smart people and we want to be doing smart things with our time and our money.	2/1/2024	Improvements are planned on Ice House Road as well. Updates to the Arroyo are for the purpose of removing sedimentation from previous precipitation events and to improve the arroyo's ability to withstand future events. The AML Program is planning to provide a more detailed site plan in the next set of engineering designs. A revegetation plan will also be created. An additional public meeting will occur to present these updated plans for the Arroyo.
18	Brad Walston	<p>No, no, no! Please!</p> <p>The Madrid Arroyo Demolition Plan is a terrible idea. The Storm Water & Erosion Project does NOT have to include the destruction of the eco system.</p> <p>I'm sure there is a better way.</p>	2/1/2024	Comment is noted. The AML Program is planning to provide a more detailed site plan in the next set of engineering designs. A revegetation plan will also be created. An additional public meeting will occur to present these updated plans for the Arroyo.

Comment No.	Name	Issue/Comment	Date	Response
19	Myka Rykuny	To my shock it has been announced that there are plans to bulldoze the arroyo behind the old school house. What plans are in place to replant trees once you are done? What plans are in place to rehabilitate the area once the arroyo and all of its inhabitants, plant and animal, have been killed by your bulldozer? In what way are your actions making the area better rather than just destroying and already barren and stressed environment? Have you in any way consulted advice from environmental experts who can assure the citizens of Marid that what you are doing is the right thing? Do you know you are doing the right thing and not causing more harm than good?	2/2/2024	Comment is noted. The AML Program is planning to provide a more detailed site plan in the next set of engineering designs. A revegetation plan will also be created. An additional public meeting will occur to present these updated plans for the Arroyo. The Environmental Assessment document informs on the impacts from the project on the human environment and natural resources. It will be updated in more depth and will include the new revegetation plan.
19	Myka Rykuny	Are there any plans in place for picking up trash collecting all along Highway 14? What are you doing to make things better?	2/2/2024	Picking up trash within the Arroyo where work is planned will be completed and is described on the engineering designs. Picking up trash outside of this area is beyond the scope of the project and the function of the AML Program. Beneficial impacts from the project on other needs are described in Chapter 4.
19	Myka Rykuny	I live part time in the old school house. How would you feel if someone came to bulldoze the area behind your property and you had no idea if it was a good idea or not?	2/2/2024	Comment is noted. The AML Program is planning to provide a more detailed site plan in the next set of engineering designs. A revegetation plan will also be created. An additional public meeting will occur to present these updated plans for the Arroyo. The Environmental Assessment document informs us on the impacts from the project on the human environment and natural resources. It will be updated in more depth and will include the new revegetation plan.
20	Patty Phillips	Against the project. Walks dogs there everyday. In fact, several of them are against the project.	2/1/2024	Comment is noted. The AML Program is planning to provide a more detailed site plan in the next set of engineering designs. A revegetation plan will also be created. An additional public meeting will occur to present these updated plans for the Arroyo.
21	Geoffrey Stewart	I am distressed by the proposed plan to destroy the ecosystem of the Madrid arroyo, namely, to bulldoze it. There is much wildlife here: ground and tree nesting BIRDS, SQUIRRELS, FIELD MICE, and other SMALL MAMMALS, GRASSES, CHAMISA, TREES and MANY OTHER PLANTS, INSECTS including ground nesting BEES. Plus it is a wildlife corridor for BOBCATS, COYOTE, DEER and MORE. You will also be destroying NATURAL BEAUTY, the element that inspires artists and every citizen here. Also, it cuts through the HEART of the village. It connects us. Many of us walk there, walk our children and our dogs there every day. Can you please not destroy this important natural space we know, cherish, and utilize daily? PLEASE PLEASE PLEASE I am a filmmaker living in Madrid, and have lived here for almost 20 years. To annihilate the natural beauty here, to annihilate the home for so much life, chills me to the bone. PLEASE PLEASE PLEASE drop the "Madrid Arroyo Demolition Plan" from your project. Thank you! Betsy Burke Below is the link to the feature film I recently shot in Madrid. It employed many New Mexicans. If you bulldoze the arroyo, Madrid will cease to be a usable location for filming. Hence: lost revenue for the state. Many films have been shot here.	2/2/2024	Comment is noted. The AML Program is planning to provide a more detailed site plan in the next set of engineering designs. A revegetation plan will also be created. An additional public meeting will occur to present these updated plans for the Arroyo.
22	Mindy McClung	I'm a resident of Madrid, NM, and live on Cave Road. I'm opposed to the Arroyo demolition plan due to the harmful impact on the ecosystem/environment.	2/2/2024	Comment is noted. The AML Program is planning to provide a more detailed site plan in the next set of engineering designs. A revegetation plan will also be created. An additional public meeting will occur to present these updated plans for the Arroyo.
23	Mark Schilkey	Would like more details instead of just bulldozing. understand we need drainage and so some may need cleared out so the water has somewhere to go. So I would like more details and would not like to see the area stripped.	2/2/2024	Comment is noted. The AML Program is planning to provide a more detailed site plan in the next set of engineering designs. A revegetation plan will also be created. An additional public meeting will occur to present these updated plans for the Arroyo.
24	Gwendolyn Zaxus	I'm writing to ask yall to not strip the arroyo in Madrid. It would be good to see the large trees and chamisas left alone. It take years for them to get that big. Isn't it time to do construction differently these days? Time to listen to nature and what it needs, and what the people of Madrid are asking for? Please don't scrape our greenbelt clear, just look at the newbies south of Madrid, on hwy 14, and what they did. Don't do that to us. We know how long things take to grow back.	2/3/2024	Comment is noted. The AML Program is planning to provide a more detailed site plan in the next set of engineering designs. A revegetation plan will also be created. An additional public meeting will occur to present these updated plans for the Arroyo.
25	Rachel Fredell	While I am not a resident of Madrid, I live several miles outside of the town and visit frequently. I enjoy walking in the arroyo, lovingly called 'the green belt' by residents who enjoy the flora and fauna that has developed over the years. I am writing to comment on the proposed Erosion Project in Madrid. I am opposed to any version of the project that would involve the demolition of the arroyo. This would destroy a thriving ecosystem and ruin an area where many residents like to walk and enjoy nature in the town. It is unnecessarily destructive and will not do anything positive for flood control. I am really hoping the county reconsiders the proposed action and takes the time and	2/3/2024	Comment is noted. The AML Program is planning to provide a more detailed site plan in the next set of engineering designs. A revegetation plan will also be created. An additional public meeting will occur to present these updated plans for the Arroyo.

Comment No.	Name	Issue/Comment	Date	Response
		thought required to gather input from residents who live and work in the town to ensure any action taken would impact the quality of their lives.		
26	Jeff Helgeson, Anne Halsey, and Sadie, Charlie, and Jesse	<p>I am writing regarding the storm water and erosion project being planned for Madrid, NM. I write to request, with the greatest urgency, that the project NOT include the bulldozing of Madrid's magical arroyo.</p> <p>Over development is, hopefully, not the future. I urge you not to try to implement a "solution" to the challenges of erosion and flooding that will create new problems.</p> <p>Let the water run free below the town and you don't need bulldozers up the line where a whole community of your citizens finds joy in the uneven erosion, the progression of ecological change in their yard, and history the arroyo holds, and, yes, the magic it inspires.</p> <p>Even if you're approaching this from a position of seeking narrow profit, the arroyo is yours. Let it be. Good things will come from it. We know we will be back, and we hope we can walk the arroyo again.</p> <p>We hope you will make the wise, preservationist choice in this matter. Save the arroyo.</p>	2/4/2024	Comment is noted. The AML Program is planning to provide a more detailed site plan in the next set of engineering designs. A revegetation plan will also be created. An additional public meeting will occur to present these updated plans for the Arroyo.
27	Charles Helgeson	Please do not bulldoze the arroyo. I love that place because it has wonderful perks to it and a great place for the community thank you very much.	2/4/2024	Comment is noted. The AML Program is planning to provide a more detailed site plan in the next set of engineering designs. A revegetation plan will also be created. An additional public meeting will occur to present these updated plans for the Arroyo.
28	Marissa Aurora	First, the proposal to remove all trees and shrubs in a 4.5 or so acre area in the arroyo that runs through town seems extreme and unnecessary. While I understand that some vegetation will indeed need to be removed in order to excavate sediment from the channel, it seems a more selective and limited removal would be beneficial to the community, wildlife, and water quality. I was also surprised to find no plan for revegetation of this area included with the 90% design. I honestly thought I was missing pages from the plan. While I understand that this project is focused on erosion control and not riparian restoration, it strikes me as unusual that tree canopy preservation, wildlife habitat, and our community use and enjoyment of the space would not be a consideration. A plan for revegetating (and watering) portions of this area with native trees and shrubs to enhance the habitat and maintain/improve riparian health would be a relatively simple and inexpensive addition to the project.	2/4/2024	Comment is noted. The AML Program is planning to provide a more detailed site plan in the next set of engineering designs. A revegetation plan will also be created. An additional public meeting will occur to present these updated plans for the Arroyo.
28	Marissa Aurora	My other concern is that the portion of the environmental assessment regarding this area and vegetation there contains a significant inaccuracy and has a general feel of not truly relating to the project designs. The EA notes that the dominant species in the arroyo is cottonwood, when in fact there are no cottonwood trees (though that might be a great species to include in the revegetation plan to replace the invasive elm trees currently present there!). The assessment concludes that denuding a 4.5+ area of riparian area would have no impact because it is "temporary" in nature. I suppose if we are talking about geological time, everything is temporary, but waiting for trees and shrubs to regrow naturally in this area will take generations.	2/4/2024	<p>The cottonwood species is an error and will be corrected in the next release of the EA. More details for the Arroyo plan and subsequent impacts will be provided in the next release of the EA as well.</p> <p>The main dominant species within the arroyo is Siberian Elm (<i>Ulmus pumila</i>), which is classified as a "Class C" noxious weed species. While there may be an immediate impact to the project area, the AML Program is planning a revegetation plan with plantings of both native grass, shrubs, and trees. This system may also include a drip system and/or hydro mulching depending on feasibility. The AML Program is working collaboratively with our engineers and Santa Fe County Open Space to create a preferred planting palette able to withstand both climate change and the ephemeral nature of the Madrid Arroyo. Due to the ephemeral nature and depth to ground water, cottonwoods are not being considered in the revegetation plan.</p>
28	Marissa Aurora	I have nearly a decade of experience working in riparian restoration and I have never seen a plan like this. In my experience, it is highly unusual to have literally no revegetation plan included in 90% drawings with this level of excavation and earth work. In some places, removing this much tree canopy without replacing (to the same diameter at breast height) every tree removed, would actually violate laws designed to prevent further climate change and protect water, wildlife, and people.	2/4/2024	Comment is noted. The AML Program is planning to provide a more detailed site plan in the next set of engineering designs. A revegetation plan will also be created. An additional public meeting will occur to present these updated plans for the Arroyo.
28	Marissa Aurora	While I support and appreciate this project taking place in our community, I think support for the project from residents of Madrid would significantly increase with a more thoughtful design and comprehensive reveg plan for the portion of the project that impacts the arroyo.	2/4/2024	Comment is noted. The AML Program is planning to provide a more detailed site plan in the next set of engineering designs. A revegetation plan will also be created. An additional public meeting will occur to present these updated plans for the Arroyo.

Comment No.	Name	Issue/Comment	Date	Response
29	Susan Fischer	I live in Madrid New Mexico and wanted to voice my opinion that I did not want to bulldoze the arroyo and ruin all the plants and animals and everything there so am I vote against the bulldoze.	2/3/2024	Comment is noted. The AML Program is planning to provide a more detailed site plan in the next set of engineering designs. A revegetation plan will also be created. An additional public meeting will occur to present these updated plans for the Arroyo.
30	Lori Swartz	<p>This is a letter that my wife and I wrote to our Madrid neighbors expressing our support and concerns for the project. We live at 7 Cave Road and believe that this project is important for the well being of our homes and community.</p> <p>We have been following the discussion surrounding the proposed AML project closely. Not only are we invested in the best outcomes for Madrid and the surrounding area, but we also have a personal interest as our property is affected every year with flooding and we will be directly impacted by the proposed implementation of the project on Cave Road.</p> <p>We walk the arroyo on an almost daily basis, and love the flora and fauna there on a deep, connected level. We also see how tenuous and at risk many of our community members' homes are. We have been in contact with different members of the project over the years as our property is encompassed within the proposed work. What is clear is that if nothing is done, it is probable that some members within our community may lose their homes in the future due to water damage and flooding. We have the opportunity to avoid this fate with no financial burden to our community. We have also been told that if there is enough resistance from the community, then the AML may take those funds to other communities that desperately want the help, but are not on the current list to get it.</p> <p>The money for this project is coming from a federal grant to be used for communities affected by a history of mining. There are other communities, scrambling to get this money, and the people running the project could choose to allocate the money elsewhere. If that happens, our community will most likely be OK for a while, but with more severe weather events, and the damage caused from our mining past, (the center of town, mostly Cave Road and the area where the houses line the Greenbelt) will be at risk.</p> <p>1) Cave Road being made into two lanes. Is it possible that it could remain one lane so that the traffic remains slowed through a dense residential area?</p> <p>2) Will parking on Cave Road be removed for all the residents of Cave Road and their visitors. This area has been residential parking for over 50 years. Can it be grandfathered in? Several houses have both house and guesthouse and there is nowhere else to park.</p>	2/5/2024	<p>The AML Project Manager, Leeland Murray, spoke with Lori Swartz on February 8, 2024, regarding parking. The AML Program stated that Cave Road will be updated to a 24ft road width and a proposed parking area of 18ft. Though the AML Program cannot grandfather in parking, no striping will be applied to the roadway, so residents can park along the road if they choose. The AML Program also spoke with multiple landowners on Cave Road and they have indicated the need for speed bumps. Our program cannot add in traffic control features; however, we have expressed this concern to the MLA as they will be taking over maintenance once the construction is complete.</p> <p>We have requested our engineers take a second look at which trees may or may not need to be removed for construction. Some trees will have to removed as some they compromise the integrity of the project designs. This will be described in the more detailed site plan in the next set of engineering designs and revegetation plan.</p>
30	Lori Swartz	What are the downstream effects of the Arroyo Project?	2/5/2024	<p>Hydrologic and hydraulic modeling has been completed for the Madrid arroyo reach by URS in 2011. The purpose of the design features is to slow the water down before discharging to the arroyo. A detention pond is planned for Ice House road area which will also “slow the water” and reduce sedimentation. We have not designed any stormwater infiltration infrastructure.</p> <p>Downstream of Cave Road, small flows in the arroyo will be directed NE into County land parcel No. 1. This will allow for some water harvesting into established riparian areas, fulfilling the project design goals first envisioned by Santa Fe County in 2018. Larger flood flows, up to and including the 100-yr flood event, will be directed under Cave Road and down the flood control channel where water now goes.</p> <p>Water directed to County parcel No. 1 will be limited in quantity due to the limited capacity of the box culverts under Cave Rd. Only about 10% of the 100-yr flood will flow NE to the County parcel. We plan to construct multiple small rock grade control structures in this NE reach of the arroyo, to prevent erosion. Also, a larger grade control structure will be built at the north end of this parcel to prevent headcutting.</p>
30	Lori Swartz	We would love more specific details of the arroyo planned to go through our property at 7 Cave Road from Highway 14 to the greenbelt arroyo. (We are totally in support of this arroyo on our property happening!)	2/5/2024	Currently our draft revegetation plan includes installing a 2" PVC drip irrigation system with a 1000-gallon temporary holding container. This is one option we are considering in addition to the option of hydro mulch. The AML Program is working collaboratively with Santa Fe County Open Space and our engineers to design a planting palate that is best suited for this type of ecosystem and climate.

Comment No.	Name	Issue/Comment	Date	Response
30	Lori Swartz	We also need a way for the water from above Icehouse Road, etc. to safely cross Main Street and be diverted from homes. As it stands, each year properties on Cave Road, ours included, are flooded when the rains come. The flood a number of years ago that affected many properties in town was one of the worst in my 20 years of living here, but those weather events are not ending, and may start becoming more frequent.	2/5/2024	On Drawing G004- Project-4 (Legend in upper right-hand corner of sheet) "Ice House Channel" would divert flow from the upper section of Ice House Road into a detention pond near Bethlehem Hill. This water would then go underneath Ice House Road, down a conveyance channel, underneath NM14 and enter a new conveyance channel to funnel water into the arroyo. Leeland Murray conducted a walk through with Lori Schwartz on February 8, 2024, and discussed this proposed plan. This channel, coupled with the road /drainage improvements, will divert flow and reduce the flooding hazard.
30	Lori Swartz	<p>It seems that most are in agreement that we need the water suppression tank. Ours is a town with a legacy of mining which has caused land destruction. We need to look at our present and future based on the reality of what has contributed to these difficulties. Let's figure out what's best for our community. We are all on the same side. Honestly, I am nervous about anyone stepping into Madrid with bulldozers. I am also nervous about flooding, severely damaging our homes. We are living with the after effects of mining, what can we do to repair the situation with minimal destruction to the current way of being?</p> <p>I think it is also important to remember that Madrid does not own the Greenbelt and the Arroyo. Talk of having locals work to shape the area is an amazing idea! But the realities of that are difficult. This is a multi-million dollar project and our town does not have the funds to support it. We are We are being offered an opportunity that may save some of our homes down the line. We would love to work to find the least disruptive way to do this... for all of the living beings!</p>	2/5/2024	Comment is noted.
31	Drew Wise	I live next to arroyo for 25 years. Walk through arroyo daily. For the project in general, but strongly opposed to the arroyo demolition plan. We'll lose the perennials and pollinators, leaving us more vulnerable to future floods and invasive species. There are trees in arroyo that have survived floods, and it handled that historic flood beautifully. Those trees kept the banks and dirt from flowing away. Strong condemnation of the plan to do this part but in favor of the rest of the plan.	2/5/2024	Comment is noted. The AML Program is planning to provide a more detailed site plan in the next set of engineering designs. A revegetation plan will also be created. An additional public meeting will occur to present these updated plans for the Arroyo.
32	Jethro Bawden	<p>The need for drainage is self-evident. The mining company abandoned the town and did not provide drainage or reclamation. In the 1980's the AML sealed some mine adits and made the drainage worse. After every rain or snow melt there is standing water on NM 14 and the gob piles erode a little more. Sometimes buildings flood. There is also a great need for a new fire-prevention storage tank. The current one is 100 years old and was damaged beyond what is economically feasible to repair, in the flood of 2013. There is overwhelming support by property owners to complete the project.</p> <p>Now there seems to be a big cry for no-build. This is coming from the lowest socio-economic group in town. Where were these people since 2009? The didn't attend and complain at any MLA meetings which are held 4 times a year. They didn't attend and complain at any Madrid Water meetings, held every month. They didn't vote no-build when the MLA was presented with 3 options, one of which was no-build. The time for them to complain is past. It just isn't fair to everyone else who did participate. The majority of people now crying for no-build are renters, not property owners. They have no economic vested interest in Madrid and could move tomorrow. They are a vocal minority who haven't educated themselves or participated in the least up until now. They have presented no alternatives for fire prevention. On the other hand there are approx. 80 landowners who have understood this project for years, who have signed a right-to-enter contract with the AML, and held endless negotiations with the AML. This proves that the majority, the landowners who have a vested economic interest, want the project to be completed.</p> <p>Also, Santa Fe County, the property owner of the greenbelt, wants the project to be completed.</p>	2/5/2024	Comment is noted.

Comment No.	Name	Issue/Comment	Date	Response
33	Jenny Lapetina	<p>i've lived in & around madrid for over 20 years, all of them on dirt side roads, & know all too well the results of nothing being done to mitigate water damage.</p> <p>i've read through most of the printed plans, & i've spoken with various people involved in the project over the past few years. i'm by no means an expert, but i do have some understanding of how water flows, the damage it can create, how to redirect it, etc. &, even though i'm an environmental advocate, i get that there will be unavoidable disruptions to the flora & fauna in the area. which brings me to the only real concern that i have with this undertaking. Most of the wording is a bit vague when it comes to the extent of damage/"demolition" that will occur in the arroyo, both within the confines of the project & downstream, as well as the reseeding/planting of vegetation afterwards. that said, i do not want those concerns to be a reason to halt the project, but perhaps a closer look at minimizing the environmental impact, both long- & short-term, would ease the concerns [i'm sure you've heard them all, some at highly emotional top volume.] that many of the residents have. i, for one, can accept some well-researched collateral damage for the overall benefits that the plan will bring to our community.</p>	2/5/2024	<p>Comment is noted. The AML Program is planning to provide a more detailed site plan in the next set of engineering designs. A revegetation plan will also be created. An additional public meeting will occur to present these updated plans for the Arroyo.</p>
34	Jill Shwaiko Bentz	<p>I own the building of Indigo Gallery on the corner of Hwy 14 and Ice House road. I have two areas of concern: Ice House Road and the Arroyo.</p> <p>So first with Ice House Road—The proposal looks very good with the grating, crowning and gravel and with some piping to take away the water also. My concern is that it will require re-grating and graveling periodically—will this project come back and do that when needed—and if so, how would we go about letting you know when it is needed?</p>	2/5/2024	<p>During initial scoping meetings in 2010-2011 and 2018 the town voted for gravel roadways instead of pavement through town. As a result of this, the AML Program entered into a Cooperative Agreement with the Madrid Landowners Association (MLA) in 2018. The MLA agreed to accept the responsibility for permanent post-construction monitoring and maintenance responsibilities on properties not owned and managed by local or state agencies.</p> <p>As a result of this Cooperative Agreement, the AML Program will provide the MLA with a specifications and maintenance manual for any new infrastructure to be maintained and monitored by the MLA upon completion of construction (including maintenance intervals). As the MLA also maintains a roadway easement through the Santa Fe County Greenbelt parcel, the MLA would be responsible for any maintenance. The AML would conduct repairs of stormwater features on private property if a design were not functioning effectively and any repairs that may be needed to the arroyo project.</p>
34	Jill Shwaiko Bentz	<p>And with the Arroyo, I think the plan looks beautiful, but I would like to make sure that our large trees in that area would not be removed unless absolutely required. I noticed that in your write ups and introduction you spoke about working with the village to keep as much in its natural state as possible. I appreciate that regard and hope that it will extend to keeping the arroyo trees happy and healthy in that area as much as you can! Extending that care would make all the difference.</p>	2/5/2024	<p>Comment is noted. The AML Program is planning to provide a more detailed site plan in the next set of engineering designs. A revegetation plan will also be created. An additional public meeting will occur to present these updated plans for the Arroyo.</p>
35	Tina Rodriguez	<p>I have lived in Madrid for 15 yrs. I will not address the details of why the demolition of our arroyo must stop, because the many, many residents of Madrid have already made you aware of them. But only to say that this is quite a distressing situation for our village! You are proposing to affect THE HEART OF MADRID! Please hear our pleas.</p>	2/5/2024	<p>Comment is noted. The AML Program is planning to provide a more detailed site plan in the next set of engineering designs. A revegetation plan will also be created. An additional public meeting will occur to present these updated plans for the Arroyo.</p>
36	Susan Nordman	<p>I am a Madrid Landowner writing to make sure you are aware that I am fully in support of the project going forward in Madrid, even though there are a few tweaks I would to see in regards to the arroyo.</p> <p>There were always going to be naysayers in Madrid, but I would like to say that I bet a huge majority of landowners would like the project to go ahead so as to protect our properties from future flooding events. And we desperately need the new water tank!</p>	2/5/2024	<p>Comment is noted.</p>
37	Robert Bond	<p>Please do not destroy the arroyo with The Storm Water and Erosion Project. All of the natural features of Madrid make it the wonderful place that it is. Destroying the Arroyo would be an environmental and cultural tragedy.</p>	2/6/2024	<p>Comment is noted. The AML Program is planning to provide a more detailed site plan in the next set of engineering designs. A revegetation plan will also be created. An additional public meeting will occur to present these updated plans for the Arroyo.</p>
38	Carl Hansen, Madrid VFD Fire Chief / Madrid Water Board of Directors	<p>Fully supportive of this project, The AML proposed action plan is a good plan, the team are good listeners and easy to work with.</p> <p>The ball park parking lot getting used for construction material and equipment will have to be on of those cooperation situations where if the town has an event equipment will need to be moved over onto Santa Fe County property . I've discussed the Fee for use of the lot with the MLA board of directors, I didn't feel like a Fee is warranted given the amount of beneficial work that the AML is doing for the town at no cost.</p> <p>It was pointed out to me that it was the AML that offered a fee to use the parking lot. I hope the space can be used in a way that leaves the area available for parking also otherwise a fee would be warranted.</p>	2/6/2024	<p>The AML Program has spoken with the Water Board and the MLA about the use of this lot. The Madrid Water Board recently passed a vote stating no fee would be applied for the AML Program's use of this lot as the AML Program is constructing these features and infrastructure improvements at no cost to the public. The AML Program will work with the town to ensure parking is still available during certain festivals and events requiring additional parking.</p>

Comment No.	Name	Issue/Comment	Date	Response
38	Carl Hansen, Madrid VFD Fire Chief / Madrid Water Board of Directors	<p>The future Madrid waste water plant was planned for the old arroyo area behind the ball field, I can't visualize where it can be relocated to in a land swap with Santa Fe County, its going to be difficult to find a new location for the waste water plant.</p>	2/6/2024	<p>It is the understanding of the AML Program that the Madrid Water Board is currently in talks with Santa Fe County for a parcel swap, though we do not know the full details. Currently water flows down the proposed new arroyo alignment, so any engineering designs would have to account for this variable.</p>
39	Andrea Fiegel	<p>The Madrid Greenbelt was sold by the Madrid Landowners Association to Santa Fe COLTPAC after a series of votes of the membership, which ended nearly evenly split for and against the sale. The primary concerns of those against the sale described the feeling of losing a communal back yard, the acreage of open space and arroyo running through the center of our little village in the gulch.</p> <p>Nearly two decades ago, the community feared development and intrusion, and was reassured by COLTPAC that they understood, respected, and held our interests, and would protect the space—and that improvements would come with our involvement and approval. For almost twenty years since, we have continued to enjoy the open space in the center of our community as always—with the added benefit of its protection by COLTPAC.</p> <p>The plan delivered very recently by the AML, with the title and description of “Madrid Greenbelt Demolition”, has hit hard:</p> <p>For several years, Abandoned Mine Lands representatives have presented updates and news to the community at nearly every quarterly meeting of the Madrid Landowners Association. The work the AML is prepared to do to mitigate mining remnants and gob piles, improving the drainage and roadways, is all but unanimously welcomed and appreciated. Our roads need improvement we could never afford ourselves. Following our experience with a once-in-a-lifetime flood in 2013—which we recovered from by crowdfunding—we understand well what work will be required at the greenbelt’s south end, at Arroyo Crossing. And every one of us wants a new water tank for fire suppression.</p> <p>No AML presentation to date has described anything remotely like this plan for the demolition of the greenbelt acreage. After years of work and diligent meetings with the community, developing a foundation of trust that began two decades ago with the work of COLTPAC, the last-minute delivery of this demolition plan by the AML's demolition contractor has shaken the community, and we are again as divided as we were at the time the sale of our Greenbelt was approved.</p> <p>The feeling of goodwill and appreciation between the Madrid community and the AML & COLTPAC has soured. We feel blindsided—after so many years of meetings, presentations, and conversations!—by this plan for the demolition of the greenbelt. We want help, but don’t want to be steamrolled into losing the things that mean so much to us as a community.</p> <p>Please halt this demolition plan in favor of allowing more community involvement and communication. More time. This is a huge (surprise!) piece of the bigger picture and it was delivered with so little time to consider and respond.</p>	2/6/2024	<p>Comment is noted. The AML Program is planning to provide a more detailed site plan in the next set of engineering designs. A revegetation plan will also be created. An additional public meeting will occur to present these updated plans for the Arroyo.</p>
40	Jack Jamison	<p>Please drop the Madrid Arroyo Demolition Plan from the Storm Water & Erosion Project. I live in Madrid and hike the greenbelt area most days with my dogs. I would hate to see the destruction of the natural ecosystem that's already grown in the arroyo by bulldozing it.</p>	2/6/2024	<p>Comment is noted. The AML Program is planning to provide a more detailed site plan in the next set of engineering designs. A revegetation plan will also be created. An additional public meeting will occur to present these updated plans for the Arroyo.</p>

Comment No.	Name	Issue/Comment	Date	Response
41	Joshua Gannon	<p>I have lived in Madrid since October of 1997. I have been a gallery owner since April of 2001. I have supported this community in many ways through the years.</p> <p>I DO support the reworking of the arroyo. I witnessed the flood of September 2013 ravage that arroyo and many parts of our village. Our home was flooded from that rain in '13. Several old timers stated to me they had not seen one like that in their 40+ years in Madrid. Climate change seems to be just showing us what may come. I'm of the opinion some folks in the village just need something to sink their teeth into from time to time, a reason to bitch frankly.</p> <p>I can't urge you enough to help us with this issue, as I know flooding will come yet again and may be worse than I've seen thus far.</p>	2/6/2024	Comment is noted.
42	Kathleen Casey	<p>I just want to say thank you for doing this project. It's desperately needed. My name is Kathleen Casey, address 1 Harvey Rd, Madrid NM and 2863 Highway 14, Madrid NM. I have a house and gallery here in town. We have so many drainage issues, this being the big one all the others drain into. Please do this project and please please remove the toxic pile of coal processing biproduct in the middle of it that is poisoning our lungs when we hike back there. Whoever desires it to remain should not be able to prevail as it negatively affects the health of all of us. That is true for the other projects on the hills around town as well. Whoever wants to keep the toxic black dust are causing health problems for others. That is not ok.</p>	2/6/2024	Removal of the gob piles is not within the scope of this project. Earlier proposals by AML to remove and reclaim the gob piles were strongly opposed by residents during the community planning and project development process over the past ten plus years.
43	Clinton Anderson	<p>As a landowner and resident of Madrid, I am writing to express my support for the planned work by the Abandoned Mine Land program in Madrid. I understand that the work is intended to prevent a repetition of the damage and disruption caused by the flood of Sept. 15, 2013, as well as mitigate the impacts of the lesser rains that make a mess in Madrid at least once a year.</p>	2/6/2024	Comment is noted.
44	Cathasha Cabrielle	<p>I am a multiple property owner and Main Street Gallery owner in Madrid, and have lived in this village for almost 20 years. Although I am grateful and excited about the country being willing to help us with the constant erosion and water run-off problems that we have suffered over the years, it concerns me greatly that you wish to destroy our beautiful and PERFECTLY FUNCTIONAL arroyo in the process, by bulldozing. It has been doing its job as an arroyo for hundreds of years and does not need our help or need to be "Improved".</p> <p>The existing arroyo as is, even in the most extreme weather conditions, has done its job very efficiently. Bulldozing, may seem like a logical and necessary part of the county erosion plan, but that is NOT necessarily true! The existing arroyo – just the way it is – is a vital and esthetic part of this village, and I (many and most of us) do NOT wish it to be destroyed.</p> <p>We call it our "Green-Belt" and it serves as a vital part of our small community. It is where we walk every morning, walk the dogs, and meet and enjoy friendships and conversations, sit in the treehouse that someone built, play music and dance. There is NO WAY we wish to have it bulldozed! Sacred, may be a grandiose word – but important for sure. Plus it is VITAL to the eco-system of this town. Even the local animals – the coyote, the hawks, the owls, the small rodents, tarantulas, and snakes use our "green belt" arroyo as home and a place to hunt and find food.</p> <p>Please consider excluding the bulldozing of our land in the county's erosion proposal. It is not necessary, and will also save the county the cost of doing so. The issue is getting the water run-off TO the arroyo, not the arroyo itself, as mentioned – it already functions very well, and has done so for centuries! Just one more very important thought:</p> <p>The soil in Madrid is very softy, rocky and sandy. It has been our experience as a community to noticed that during heavy weather, the soil and sand washes down-stream and clogs the arroyo and makes passage to Rogersville's Road difficult or unpassable. If the soil in the arroyo in Madrid is churned up and disturbed, it may in fact ADD to that problem, NOT improve it. The soil in our arroyo is firm and well packed. Disturbing that will only cause more problems down river, due to lose soil washing away. The trees and shrubs that grow there, that now hold that soil in place will be gone, also adding to the problem. Not good! Please leave it that way. Mud is already a huge problem here – we don't need more!</p> <p>I hope you will take some of what I have addressed into consideration and STOP the bulldozing of Madrid's Arroyo, our playground and our ecosystem.</p>	2/6/2024	Comment is noted. The AML Program is planning to provide a more detailed site plan in the next set of engineering designs. A revegetation plan will also be created. An additional public meeting will occur to present these updated plans for the Arroyo.

Comment No.	Name	Issue/Comment	Date	Response
45	Jim Brulet	Presently, and for the past 17+ years, my home is on Rogersville Road in Cerrillos. Many of my neighbors, as well as myself, cross the Madrid Arroyo on a daily basis about 1-1/2 to 2 miles downstream of the APE. This low water crossing washes out during storm events, requiring constant maintenance by residents of that private road. I would not want the Madrid project to have a negative affect on this area. Although located far outside of the Madrid Stormwater project, downstream impacts MUST be taken into account. More on this below.	2/6/2024	<p>The proposed improvements to Madrid Arroyo within the town of Madrid will not increase the total volume of stormwater flowing north from town and should help to reduce the peak flow rates that leave town. The proposed arroyo improvements will not add more sediment to the flow going north, so we do not anticipate that this project would make this road crossing discussed here any worse.</p> <p>Hydrologic and hydraulic modeling has been completed for the Madrid arroyo reach by URS in 2011. The purpose of the design features is to slow the water down before discharging to the arroyo. A detention pond is planned for Ice House road area which will also “slow the water” and reduce sedimentation. We have not designed any stormwater infiltration infrastructure.</p>
45	Jim Brulet	Excess fill from the arroyo will be used; Does this refer to the existing sediment which has collected over the years? Is there an actual estimate of how much is there, how much can be utilized, and how much might remain upon project completion? What would be done with any remaining material? If allowed to wash downstream I feel the additional scouring and sedimentation would have a negative impact along that route. Additional deposition of coal tailings would also occur.	2/6/2024	<p>The proposed improvements include the removal of excess sediment from Madrid Arroyo within the County Open Space (Parcel #2) in the middle of town. This is material that has accumulated over many decades. The removed material will be trucked up to a stable soil disposal area above the ballfield where it cannot erode back into the arroyo. The design will trap some future sediment flowing in the County Open Space but is not intended to capture all upstream derived sediment.</p>
45	Jim Brulet	Direct small stormwater flows to the original Madrid Arroyo; This stream bed is presently a gentle, broad, U shaped cross section. The hiking trails are along this pathway. Could additional sediment flow cause damage to this area? This original alignment joins back into the present (west) channel about 1/2 - 3/4 mile downstream, where there is now forming a 6+ foot deep head cut. This damage is at the end of an incised channel which begins approximately 200 yards upstream of it. The natural tendency of head cuts is to move upstream due to the erosional action of continued/increased water flows. How long before this effect ruins the stream bed and hiking trails, reaching all the way to the Cave Road box culvert? Any existing vegetation would also suffer due to the lowering of groundwater which would flow to the ever deepening channel. Although I'm not opposed to this redirection of flow, again, downstream impacts must be taken into account. I'm aware this is beyond the project area, but it needs to be considered.	2/6/2024	<p>Hydrologic and hydraulic modeling has been completed for the Madrid arroyo reach by URS in 2011. The purpose of the design features is to slow the water down before discharging to the arroyo. A detention pond is planned for Ice House road area which will also “slow the water” and reduce sedimentation. We have not designed any stormwater infiltration infrastructure.</p> <p>Water directed to County parcel No. 1 will be limited in quantity due to the limited capacity of the box culverts under Cave Rd. Only about 10% of the 100-yr flood will flow NE to the County parcel. We plan to construct multiple small rock grade control structures in this NE reach of the arroyo, to prevent erosion. Also, a larger grade control structure will be built at the north end of this parcel to prevent headcutting.</p> <p>Downstream of Cave Road, small flows in the arroyo will be directed NE into County land parcel No. 1. This will allow for some water harvesting into established riparian areas, fulfilling the project design goals first envisioned by Santa Fe County in 2018. Larger flood flows, up to and including the 100-yr flood event, will be directed under Cave Road and down the flood control channel where water now goes.</p>
45	Jim Brulet	A native seed mix and plantings; Will there be good, solid technique used to prevent wind and water from washing seeds away before the plantings are firmly established? Will there be initial maintenance in the form of watering and weed removal to aid growth? By whom? Have the meander, grading, and planting plans taken into consideration the possible retention of the existing trees? Can trees removed be replaced with suitable species of equal size? Given the difficulty of mature trees surviving transplant, would there be a maintenance regimen to help with establishment? Large, mature trees will benefit soil retention and wildlife as well as adding to the pleasing aesthetic of a natural environment (Visual Resources). I would agree that work done outside of avian breeding season would be beneficial.	2/6/2024	<p>Comment is noted. The AML Program is planning to provide a more detailed site plan in the next set of engineering designs. A revegetation plan will also be created. An additional public meeting will occur to present these updated plans for the Arroyo.</p>
45	Jim Brulet	Drawing C-203: The drawing appears to show planting in the bottom of the stream bed adjacent to the meander. Would there be benefit to establishing planting of shrubs and grasses on the newly graded banks as well? Could it be anticipated that such plantings would help hold soil in place on these banks during times of higher than normal water flow? Drawing C - 203 shows major section lines 1 thru 9 cut through the arroyo. I'm unable to locate those details in the plan drawings, perhaps my question would be answered there.	2/6/2024	<p>A more detailed revegetation plan is forthcoming. The project does intend to establish some shrubs and native grasses within the arroyo area, both on the constructed floodplain surfaces and on the adjacent side slopes.</p>
46	Kristen Jensen, DVM	I am a resident of 1 Opera House Road in Madrid, NM. I live along the arroyo and was both distressed and upset to learn that there were plans to bulldoze and remove vegetation in the arroyo. I feel the arroyo flora and fauna will be greatly disrupted by this plan. The arroyo is an important part of our community here, and I am very against doing anything that will disrupt this small ecosystem. I walk in the arroyo daily, and feel this plan should be reconsidered. Thank you for your time.	2/6/2024	<p>Comment is noted. The AML Program is planning to provide a more detailed site plan in the next set of engineering designs. A revegetation plan will also be created. An additional public meeting will occur to present these updated plans for the Arroyo.</p>
47	TK Ryn	Support the project. Go for it. Have the best in mind for our community. I know there will be difficulties with machines, but last time it flooded it cause many difficulties. I accept the fact that if there's an improvement that there might be some difficulties.	2/6/2024	<p>Comment is noted.</p>

Comment No.	Name	Issue/Comment	Date	Response
48	Paula Zima	<p>This pdf was sent to me, from a 10 year old project undertaken in Madrid: https://www.emnrd.nm.gov/mmd/wp-content/uploads/sites/5/OSMREReclamationNomination-MadridLowImpact.pdf</p> <p>I'm wondering: 1-Is the project is related to this one? 2- If so, or even if not, it might be beneficial to read it, particularly the comments about how working with the residents was crucial to the success of the project.</p> <p>And Lastly, there is an online magazine called Reasons To Be Cheerful. They locate such things worldwide, and the link below goes to a story regarding re-wilding for flood protection. It seems to me that digging out the arroyo in Madrid, goes pretty much against this idea. As usual, humans messing up nature.</p>	2/6/2024	<p>Dealing with stormwater and erosion control issues within the town of Madrid has been a priority of the AML Program for many years. The project mentioned in the provided PDF was a past project conducted by AML, though it was not completed due to landowner realty issues. The current project utilizes many of the same low-impact features for stormwater control and similarly, has been developed though comment with the Madrid community for multiple years. To develop these plans, the AML program has conducted two public scoping meetings in 2018 and has performed over 70 in person meetings with landowners over the years to identify where stormwater features could be placed.</p> <p>The Arroyo has been significantly impacted over the past 100 years since the mining company straightened the arroyo channel. This straightening has caused further sediment build-up and increased velocity compared to a natural meander. The purpose of the proposed arroyo work is to restore some of its historical function to better handle future episodic precipitation events.</p>
49	Andrew Bramble	I am in favor of almost all of the proposed AML work in Madrid. The only part I'm not 100% for, I'm not necessarily against, but I am concerned with some elements of the greenbelt work proposed. I am concerned with the lack of specificity with the revegetation aspect. Is there a plan for watering, monitoring progress, other maintenance as needed after seeding?	2/6/2024	Comment is noted. The AML Program is planning to provide a more detailed site plan in the next set of engineering designs. A revegetation plan will also be created. An additional public meeting will occur to present these updated plans for the Arroyo.
49	Andrew Bramble	I am also concerned that the plan shows one single rock structure on the northernmost side of the greenbelt. The head cuts there are over 6 feet deep. I've done some land restoration work and this seems inadequate to me.	2/6/2024	<p>A serious grade control structure is planned for the north end of the County land NE of the Cave Rd crossing (County Parcel No. 1). The next iteration of the design drawings will show this structure in detail. Ms. Bramble was present in the field for a discussion of plans for this location.</p> <p>More work is limited in this area due to restricted private property access.</p>
49	Andrew Bramble	I live just downstream of this project and I'm concerned about the impacts more heavily sedimented storm water will have on my property and road if the northern end of the greenbelt project is not adequately designed, constructed, and managed. What I've seen so far does not inspire confidence.	2/6/2024	Comment is noted. The AML Program is planning to provide a more detailed site plan in the next set of engineering designs. A revegetation plan will also be created. An additional public meeting will occur to present these updated plans for the Arroyo.
49	Andrew Bramble	<p>I'm also concerned to hear that the AML may consider pulling out of Madrid altogether based on some comments received. The Landowners are not the only stakeholders here and many folks are only now getting details about the greenbelt project (I have not heard anyone yet voice concern or opposition to the rest of the plan - everyone seems on the same page with Ice House Road and the Fire Suppression tank).</p> <p>Public comment is part of the process. Some people are alarmed, scared even, about possibly losing the public greenspace in the center of their community. This is the only say they may have for a place they love dearly.</p> <p>Please don't be put off by their passion. Just because they don't own land, doesn't mean they don't have a stake in what happens in the greenbelt. They enjoy the trees in the north end and they've listened to the owls that nest there for decades.</p>	2/6/2024	Comment is noted.
50	Montana Standish	<p>I am a resident of Madrid and would like to voice my support for finding alternative plans for handling the erosion around the arroyo that would involve minimal environmental impact, and not making Cave Road into two lanes. As I'm sure many residents have noted, the arroyo as a natural space the way it stands today is of huge value to our community, and we do not want to see it demolished or destroyed in any way-- if permaculture techniques could first be employed to address the erosion.</p> <p>That being said, I also acknowledge the need for other very helpful aspects of the plan such as the water tank, and the general need to address the erosion that will continue to cause flooding and residential damage if not addressed.</p>	2/6/2024	<p>Comment is noted. The AML Program is planning to provide a more detailed site plan in the next set of engineering designs. A revegetation plan will also be created. An additional public meeting will occur to present these updated plans for the Arroyo.</p> <p>The AML Program's proposed designs to Cave Road would increase the width to 24 ft, which would allow for two lane traffic; however, the AML only intends to improve the roadway but will not be applying road striping. Expanding Cave Road to 24 ft would also allow for greater emergency and service vehicle access to homes along Cave Road and on Back Road compared to its current state.</p>
51	J. Konold	I do not want to see the arroyo in Madrid bulldozed. I am a resident of Madrid and I love the arroyo as it is.	2/6/2024	Comment is noted. The AML Program is planning to provide a more detailed site plan in the next set of engineering designs. A revegetation plan will also be created. An additional public meeting will occur to present these updated plans for the Arroyo.

Comment No.	Name	Issue/Comment	Date	Response
52	Stella Byrne	<p>As a longtime resident of Madrid, I see a clear need for stormwater and erosion control and I am supportive of the use of these dedicated funds and expertise to address ongoing issues caused by the mining legacy in this area.</p> <p>I'm writing to address community outreach endeavors as part of the Madrid Stormwater and Erosion Control Project. It is clear following last week's public meeting that more specific and accessible renderings of the final plans for the arroyo portion of the project in particular are needed to ensure clarity and community buy-in. I encourage the AML and partner organizations to consider a follow-up meeting to address areas of concern for local residents, clear up possible misinformation, and review the overview of timeline and stakeholders. I know that this has been done in an ongoing way for many years, but I believe that finalizing the plans means we need community outreach on a deeper level than landowner-by-landowner. This is a community whose cultural resources include a strong sense of community responsibility for shared (sometimes public) physical spaces, interdependence among a socioeconomically and culturally diverse community, and a history of creative rural resilience.</p>	2/6/2024	<p>Comment is noted. The AML Program is planning to provide a more detailed site plan in the next set of engineering designs. A revegetation plan will also be created.</p> <p>An additional public meeting will be held to present these updated plans. When a public meeting date is confirmed, the AML Program will send flyers, mailings, advertise on KMRD, and the MLA Facebook Page. This meeting will be a design panel style with our design engineers for residents to ask follow-up questions. The design meeting is tentatively planned for late summer.</p>
53	Renea Roberts & Gardeners of The Madrid Community Garden	<p>As members of the Madrid Community Garden, we are a diverse group, with varying perspectives on any given matter. We do find a common bond in our garden that's not far from the arroyo streambanks of our little town.</p> <p>While there may be varying viewpoints on the erosion control project, we are in favor of the project as a whole, acknowledging many benefits to homeowners that experience flooding as well as townwide benefits with the improvement of the fire suppression system.</p> <p>One area that weighs heavy on the minds of many is the potential denuding of the stream bed and banks and the apparent lack of a revegetation plan for riparian and upland areas disturbed. Our concern is not only for the animal, bird and insect habitat in this delicate ecosystem, (all those pollinators included), but also for what is the heart of our human habitat as well.</p> <p>We kindly request reconsideration of the design for the arroyo project to include more selective removal of trees/shrubs and a revegetation plan for the areas disturbed.</p>	2/6/2024	<p>Comment is noted. The AML Program is planning to provided a more detailed site plan in the next set of engineering plans. A revegetation plan will also be created. An additional public meeting will occur to present these updated plans for the Arroyo.</p>
54	Julian Winter	<p>I don't see a post-project maintenance plan. Does this project anticipate the need for ongoing maintenance and if so, what entity is responsible for managing this maintenance? If no maintenance is anticipated what recourse exists for damage caused by subsequent rains and water runoff?</p>	2/6/2024	<p>The AML Program entered into a Cooperative Agreement with the Madrid Landowners Association (MLA) in 2018. The MLA agreed to accept the responsibility for permanent post-construction monitoring and maintenance responsibilities on properties not owned and managed by local or state agencies.</p> <p>As a result of this Cooperative Agreement, the AML Program will provide the MLA with a specifications and maintenance manual for any new infrastructure to be maintenance and monitored by the MLA upon completion of construction (including maintenance intervals). As the MLA also maintains a roadway easement through the Santa Fe County Greenbelt parcel, the MLA would be responsible for any maintenance. If stormwater designs in the arroyo are damaged by heavy rains, the AML will repair these features.</p> <p>Additionally, the AML Program has designed the Madrid Stormwater and Erosion Project to best accommodate the historic landscape, drainage problems, and landowner's requests. At the request of multiple landowners and the community, the types of designs used in this project are as low maintenance as possible while balancing the critical needs to convey stormwater away from residences and buildings.</p>
54	Julian Winter	<p>I note that it's been a few years since the last draft EA was released publicly. The current 90% complete EA was completed in Dec. 2023 with an anticipated start date of summer 2024. The January 25th, 2023 Madrid meeting was sparsely populated. I've asked various residents if they were aware of the status of the Stormwater Project and none were. I strongly suggest that a better publicized presentation be scheduled which uses not just the easily overlooked mailer but PSA on WMRD, flyers at the Mineshaft, the Mercantile store, Java Junction and businesses frequented by locals. It's imperative that a significant portion of Madrid be aware of and weigh in on the ramifications of this project otherwise you'll have a very shocked citizenry when the heavy equipment starts tearing up land.</p>	2/6/2024	<p>Notifications of the meeting were sent by Every Door Direct Mail from the USPS which should have provided the meeting information to everyone within Madrid and Cerrillos. The AML Program also had a PSA aired on KMRD (aired for a few weeks) and posted on the MLA Facebook Group page (Mid-December). A public notice was published in the Santa Fe New Mexican and the Albuquerque Journal. Additionally, public notice copies (in Spanish and English) were posted on the public information boards at the Mercantile Store, Java Junction, and Village Grocer.</p> <p>To reach more residents, additional notices can be posted at the locations mentioned here as well as a longer running PSA on KMRD for the next scheduled public meeting and any future notices.</p> <p>The AML Program is currently working with 25 active landowners in Madrid with design features on their property, and we will aim to provide better outreach for the next public meeting event.</p>

Comment No.	Name	Issue/Comment	Date	Response
54	Julian Winter	I understand there is a re-vegetation/seeding component to the plan. What entity is responsible for post-project care of the seeding before it establishes itself?	2/6/2024	<p>As a result of this Cooperative Agreement, the AML Program will provide the MLA with a specifications and maintenance manual for any new infrastructure to be maintenance and monitored by the MLA upon completion of construction (including maintenance intervals). As the MLA also maintains a roadway easement through the Santa Fe County greenbelt Parcel, the MLA would be responsible for any maintenance. The AML would conduct repairs of stormwater features on private property if a design were not working effectively and any repairs that may be needed to the arroyo rehabilitation project.</p> <p>The AML Program will be providing an updated revegetation plan and may be responsible for providing post-project plant care up to two years after the project has been completed. Further details will be released with the revegetation plan.</p>
55	Stephan Eiter	<p>I am specifically writing in opposition to the full scale bulldozing and grading of the Arroyo between Bridge Rd and Cave Rd. The remainder of the project proposal seems warranted, especially the fire management aspects and town water tank. I have properties on 5 Bridge Rd and 24 Backroad. Susan (stepmother) owns the property at 28 Backroad. Both of our Backroad properties lie directly on the Arroyo.</p> <p>I am sure by this point you have gotten a lot of feedback around the proposed Alternative B and please take into consideration that keeping the arroyo as close to its current visual appearance is a highly desired outcome for almost all of us who live on it. While I recognize that some mitigation efforts are needed, based on the plans provided and what I saw at the most recent meeting, I think it is imperative that we look at an alternative blend of flood control with retaining the natural characteristic of the space. I don't think anyone is arguing against the rebuild of the culverts under Cave Rd. That is needed in some form.</p>	2/7/2024	<p>Comment is noted. The AML Program is planning to provide a more detailed site plan in the next set of engineering designs. A revegetation plan will also be created. An additional public meeting will occur to present these updated plans for the Arroyo.</p>
55	Stephan Eiter	<p>The spill way plan looks fine, however, can we make it aesthetically pleasing?</p> <p>There was also a sectional drawing of the foot bridge at Bridge Rd. Please don't rebuild this bridge and make it 10' wide. People will want to drive over it and the current bridge is adequate as a pedestrian walkthrough. I have personally helped maintain the treads. It is historic to the mining days and visually amazing. A new steel and pressure treated decked bridge will destroy that historic nature and should not be on the table.</p> <p>Further - the natural channels in the arroyo are there. Does some sediment need to be removed, indeed. No argument. But regrading a wide swath of that floodplain all the way from the Bridge to Cave Rd will have adverse and negative effects on the historic nature and visual nature of that area. Tourists and townspeople alike enjoy that space and it should be preserved as is.</p>	2/7/2024	<p>The AML Program currently has no plans to work on the foot bridge at Bridge Street. We will work to clarify this on the designs. A new foot bridge will be constructed further to the north where a proposed drainage channel will cut through the historic railroad grade to channel water from the east hillside into the arroyo.</p> <p>The AML Program is planning to provide a more detailed site plan in the next set of engineering designs. A revegetation plan will also be created. An additional public meeting will occur to present these updated plans for the Arroyo.</p>
55	Stephan Eiter	<p>Lastly - I am personally asking that the trees not be removed. Especially the one mature tree closest to my property at 24 Backroad. It has the remains of a tree fort that all of the now teenaged kids in town and I built when they were 7-10. All of their names are listed on it and it needs to remain.</p>	2/7/2024	<p>Comment is noted. The AML Program is planning to provide a more detailed site plan in the next set of engineering designs. A revegetation plan will also be created. An additional public meeting will occur to present these updated plans for the Arroyo. The AML Program will work to ensure large trees remain whenever possible. If the treehouse is located on Santa Fe County property, it may need to be removed as part of this construction project.</p>
55	Stephan Eiter	<p>One other thing I think is important to understand - the arroyo is not just a floodplain that needs to be fixed. It is often the heart and soul of the town. During covid, when all of us were in lockdown and nervous. My partner and I would send music out from my patio at 24 Backroad and all of our neighbors would come to the arroyo, socially distance and dance for an Hour every night. They would populate the small rises and trees and open space and we could all see each other and feel a sense of normalcy. We did this for the entire lockdown (55 nights in a row) as it gave some sense of community and normalcy to a harrowing time. If you have received a lot of negative comments about the arroyo (and I am sure you have heard a lot from my old friend Andrew Wice) please understand that this area of town means a lot to so many of us who live here. It is not something that we can express in words some time. While we need to make sure there is safety and protection for the entire community, we also need to preserve the integrity of the community space and what it means to all of us.</p>	2/7/2024	<p>Comment is noted. Efforts will be made to update the EA to reflect the importance of the Arroyo to the community.</p>

Comment No.	Name	Issue/Comment	Date	Response
55	Stephan Eiter	<p>I know this has been a long process and years in planning. I don't actually recall receiving and mailings regarding the plans which has surprised me and I have had to rely on my neighbors to relay time and dates of meetings and other information. I have chatted with Leelend Murray at the recent meeting and I know everyone involved is working hard to do what is needed.</p> <p>But is full demolition of the arroyo actually needed? Yes it is probably easy to just bulldoze it, but you will destroy an integral "community member" by doing so. Hopefully there is some compromise alternative that can be designed.</p> <p>In summary:</p> <p>We are fully opposed to Alternative A (section 2.1.2) which includes the bulldozing and full grading of the Arroyo.</p> <p>I am also opposed to Alternative B (section 2.2.2) as it would need to be more fully examined and designed before we could agree to it.</p> <p>The sections concerning the culverts under Cave Rd are necessary and we do not oppose that aspect.</p> <p>For Alternative B - would that just mean the deepening of the existing channel? It just says "sediment removal" - if that is the case then would it be possible to see a better plan or some renders of the idea other than just engineering drawings.</p> <p>We don't want to jeopardize any of the flood mitigation plans developed that help Cave Rd residents, Ice House Rd etc.</p> <p>We are also 100% supportive of the road grading, water tank, fire suppression parts of the project. Please make sure we get those parts done.</p> <p>Really just hoping to see if we can arrive at an Arroyo plan that preserves a bit more of the current natural feel and aesthetics.</p> <p>If it comes to an all or nothing on Plan A - it would be unfortunate, but I would fight for the tree fort. :)</p>	2/7/2024	<p>Comment is noted. It seems there was a misunderstanding of the term "Demolition Plan", which has since been revised in the plan sets. This term was meant to only describe the disturbance extents for the project. The Madrid Arroyo has undergone significant human-caused disturbances since the mining-era. The large accumulation of sediment in the arroyo and unnatural straightening caused by the mining company, has made this arroyo project a critical yet very challenging engineering design.</p> <p>In its current state if the arroyo were to flood similar to 2013 during a high episodic precipitation event with the arroyo bed elevation higher than Cave Road, this would likely cause significant flooding to the residents along Cave Road. In order to accomplish the goal of rechanneling stormwater and bringing the arroyo back to a more natural system, large scale sediment removal is needed to bring the elevation of the arroyo down. We understand many residents are for the water tank and fire suppression system. However, we are not separating out projects and will either be constructing the entire project or none. The AML Program added the water tank as a complimentary part of the larger mining legacy hazard project.</p>
56	Linda Heitkamp	<p>My son and I have lived in Madrid for over 40 years. There hasn't been enough time to think through and comment on this project. I couldn't attend the public meeting. I need more detailed information; postcard isn't helpful in understanding the project. There hasn't been adequate information informing residents. Main concern there hasn't been enough time to review information and respond. I love the arroyo don't want to see it changed by engineers channelizing. The arroyo isn't harming anyone's property in Madrid. As you know we don't receive a lot of rain in the area. I'm right across from the arroyo and enjoy taking walks. Worried about channelizing and bulldozing the arroyo. Love our small town.</p>	2/7/2024	<p>Comment is noted. The AML Program is planning to provide a more detailed site plan in the next set of engineering designs. A revegetation plan will also be created. An additional public meeting will occur to present these updated plans for the Arroyo.</p> <p>Notifications of the meeting were sent by Every Door Direct Mail from the USPS which should have provided the meeting information to everyone within Madrid and Cerrillos. The AML Program also had a PSA aired on KMRD (aired for a few weeks) and posted on the MLA Facebook Group page (Mid-December). A public notice was published in the Santa Fe New Mexican and the Albuquerque Journal. Additionally, public notice copies (in Spanish and English) were posted on the public information boards at the Mercantile Store, Java Junction, and Village Grocer.</p> <p>All project information can be found at the link provided below: https://www.emnrd.nm.gov/mmd/public-notices/</p> <p>For the next public meeting, additional notices will be posted at more locations as well as a longer running PSA on KMRD.</p>
57	Rebecca Nafey, Madrid Water Board, MLA Board	<p>There may need to be some tweaking, but overall, it is a fine plan.</p> <p>I'm sure you have had an earful from naysayers. Mostly these people do not even own anything in Madrid and are just sticking their nose in where it doesn't belong. I hope you can take their negativity with a grain of salt or water off a duck. I apologize for them.</p> <p>I look forward to the work commencing and protecting my and all my neighbors, homes and businesses.</p>	2/7/2024	Comment is noted.
58	Cole Roberts	<p>As a Madrid land owner, I would ask that we bias toward alignment with natural drainage patterns, established international and national best management practice for stormwater management, complemented by guidance features that do not harden the water flow, unless in exceptional circumstances needed to protect roads or lot lines. As an engineer, working with stormwater engineers and environmental consultants regularly, I'm happy to contribute further input in support of the efforts to sustainably and appropriately manage storm flow in the Madrid area.</p>	2/7/2024	Comment is noted.

Comment No.	Name	Issue/Comment	Date	Response
59	Sage Stock	As a community member who uses Cave Road and enjoys the arroyo on a daily basis, I have some concerns about the arroyo demolition section of the proposal. We definitely need the erosion and water management on Ice House Road, Fire House Lane and the gob piles etc., along with the fire suppression tank improvements. My comments are in no way intended to deny the need for work, or to block the work. However, along with other community members, I feel the proposed plan for demolition and reconstruction of the Arroyo can be, and should be improved. It seems the proposal as it now stands is incomplete.	2/7/2024	Comment is noted. The AML Program is planning to provide a more detailed site plan in the next set of engineering designs. A revegetation plan will also be created. An additional public meeting will occur to present these updated plans for the Arroyo.
60	Sage Stock	At completion of this project we need to have an attractive arroyo filled with life, that functions to move major stormwater runoff safely past our buildings and roads while slowing the water to protect downstream landscapes and waterways. I believe this can be achieved in an ecologically sensitive and community friendly way. Minimize arroyo demolition to preserve the existing vegetation along the arroyo's sloped banks as much as possible. It is essential to reduce future erosion by preserving and working around existing trees and routing the water based on the current evolution of its flow [Edited to add: I support investigating the recently proposed new idea of maintaining the braided channels] rather than the historical paths that have been replaced over time. Couple this with a much more comprehensive plan for revegetation of the area. Further erosion mitigation measures to stabilize the disturbed areas with non-obtrusive structural measures and a comprehensive revegetation plan are required. Alternative A's plan to seed the arroyo with native seeds seems like a small effort at revegetation. Alternative B's plan for "more landscaping and plantings resulting in a greater long-term beneficial impact on vegetation" as noted on page 24 is a little better, but the other aspects of Plan B such as paving Bridge Street go too far. An improved revegetation section is needed to complete this planned action. A comprehensive revegetation plan following the construction work is not yet in place. The plan should be specific as to who will do what, for how long, and if and when the vegetation can be left to its own devices after it is established. The area has the potential to be a beautiful green belt/open space area, with diverse native perennials that prevent erosion and support the area's wildlife. This requires a thoughtful, original, locally sensitive reconstruction of the waterway. This isn't an arroyo behind the block backyard walls in Rio Rancho. Our visual environment is not the same. Beyond that, an initially intensive, and then ongoing regimen of seeding, planting, mulching and watering should be put in place. Simply spreading seed and hoping for the best is certain to have noxious weeds, bare soil and erosion prevailing in the end. The drawings included in the current plan are detailed as to construction materials and methods, and placement of the man-made components. To complete this plan we need similarly detailed plans and drawings that specify materials, methods, and placement for the revegetation as well.	2/7/2024	Comment is noted. The AML Program is planning to provide a more detailed site plan in the next set of engineering designs. A revegetation plan will also be created. An additional public meeting will occur to present these updated plans for the Arroyo.
60	Sage Stock	2. Consider adding either some simple preparation or remediation to Back Road as it will be handling all the through traffic to Waldo Mesa and Miller Gulch while Cave Road is closed. It is already in rough shape and will be negatively impacted. There will be some neighbors who won't want this because the bad road slows traffic.	2/7/2024	The AML acknowledges additional traffic is likely on Back Road as the project commences. After discussing this issue with some residents, the AML Program will perform some minor grading and gravel addition when the project is completed.
60	Sage Stock	3. On page 5, Cave Road improvements are described as grading it into "2 bifurcated roadways, one east and one west..." I understand this was clarified in the information meeting to simply mean a two lane road. This section (2.1.2) does not say in writing what has been described verbally. I ask the wording be cleared up. I would argue against a bifurcated road as it has been described in writing. This would require too much space be dedicated to roadway and too little to pedestrian trails and vegetation.	2/7/2024	The next release of the EA will include an update to clarify that Cave Road would be regraded to a width of 24 feet which will allow vehicles to pass one another, but not create a formal two-lane road. Bifurcation will be removed.
60	Sage Stock	4. On pages 3 and 4 (section 1.3) Madrid residents are described historically as being "eclectic individuals seeking personal freedoms." While today's residents are described as "artists who wish to preserve and embrace the rich mining history of the town." I would argue it should be stated we also strongly wish to preserve our personal freedoms. Overlooking or omitting that trait does the residents and the reader a disservice.	2/7/2024	Will attempt to clarify in the next release of the EA that the second statement is in addition to the first historical statement.
60	Sage Stock	5. Finally, I'd like to encourage engineers and other plan developers to engage with Amanda Bramble. She has worked this land for 20 years and is an expert in our little ecosystem here. She teaches at community college and at her sustainable living education center just downstream to the project. She is a calm presence, an original thinker, and a peacemaker.	2/7/2024	Comment is noted. Amanda Bramble has submitted extensive comments for this project and been an active part of the public meetings.

Comment No.	Name	Issue/Comment	Date	Response
61	Kiera Quinn	<p>There has been some hype lately here in Madrid regarding this project. Everyone has the best interests of the town at heart. But there has been some misinformation floating around, and as a result, there may have been some overzealous comments that want to drop the whole project. From what I have seen, as these people get a more holistic view, they all seem to agree that there are some aspects that are incontrovercial, like the water tank. We all want that, but many people may not have known it was part of the project when writing in.</p>	2/7/2024	Comment is noted.
61	Kiera Quinn	<p>They may not been informed about why there would be bulldozers in the arroyo, just that they would be there. And this concerns people. We are very connected to the place where we live. As someone who grew up here, and remembers the arroyo before the big flood, I am nervous about the changes. I am also very nervous about how much the bulldozers are going to do. It seems like every time big equipment comes to town, things are worse than before. However, the flooding that people are experiencing is very harmful, and needs to be dealt with.</p> <p>1) I 100% support the water tank part of the project.</p>	2/7/2024	Comment is noted. The AML Program is planning to provide a more detailed site plan in the next set of engineering designs. A revegetation plan will also be created. An additional public meeting will occur to present these updated plans for the Arroyo.
61	Kiera Quinn	<p>2) I would very much like to see the native vegetation anchoring the gob piles. Every time we get a heavy rain, from my gallery we can see the difference in the black water coming from the gob piles and the brown water coming from the west side of town. This topic was glossed over in the meeting, and as such, I'm not really sure how much is being planned, nor which gob heaps would be affected, but they really need to be brought back in to the natural ecosystem and stabilized to prevent further damage.</p>	2/7/2024	In the past, gob revegetation ideas have been met with significant public resistance, so the AML Program will not be revegetating the gob piles as part of this project. Additionally, nearly all gob piles in Madrid are owned by private landowners. To date, we haven't received any inquiries to revegetate the gob piles beyond discussing plantings at the bases to help slow sediment runoff in addition to the drainage channels.
61	Kiera Quinn	<p>3) I would like to see the arroyo become a more native environment as well. Being that this is a desert, we need to have ways to slow down the water, so it can refill the aquifer. I would like to see some small interventions to make the arroyo more functional and sustainable.</p> <p>I like the idea of the arroyo going into the natural growth area on the other side of Cave road, but I am nervous about how that work will impact the residents. I would like to see the rest of the arroyo become more like that area. This will not happen if the water is funneled away as fast as possible, it needs to stick around to after the plants and soak in, and then the places can help slow the water down in turn. I don't see how the bulldozer will help with this, but I see how it could harm it. No matter what work gets done, the plants are absolutely essential.</p> <p>I am hesitant about the area downstream of that natural growth area. There is a lot of coal residue there that could be sent downstream if it is not stabilized. There is a very deep cut that will just get deeper, if the plants are not extended the whole way and the path of the water considered very carefully. This section of the plan also seemed rather under developed. While the area was once the natural path of the arroyo, the area has been changed drastically since then and the natural path will not be what it once was.</p> <p>4) I understand that we also need to plan for the large influxes of water that needs a place to go. I like having a backup system for this reason, and I get the bulldozing will help with this, but we cannot just leave it bare. Those massive influxes really need the established root systems to support the arroyo walls, or they will not be able to handle the torrent of water. For context, when I was young, I got to see the terrifying power of water in the desert firsthand. Standing on the banks of one of the local arroyos, I watched a 20 foot high wall of water barrel down the canyon faster than a car could drive, reaching nearly the bank where I was standing. This water is no joke. Leaving the walls of the arroyo as they are is asking for trouble. We need native plants to support and protect this fragile structure.</p>	2/7/2024	<p>Comment is noted. The AML Program is planning to provide a more detailed site plan in the next set of engineering designs. A revegetation plan will also be created. An additional public meeting will occur to present these updated plans for the Arroyo.</p> <p>The current AML design for Madrid Arroyo (and the earlier Santa Fe County design) seeks to re-establish a functional arroyo and floodplain system. This is the most effective way to limit erosion and encourage water infiltration. Anthropogenic alterations in Madrid Arroyo over many decades have channelized the stormwater path and prevented the development of an active floodplain. Currently there is a have a rocky bottomed channel and no place for water to soak in.</p> <p>The current design includes a small arroyo channel and adjacent floodplain areas to the left and right, just 18" higher than the bottom of the channel. Small flow events will just pass on through, but anything larger will spread out and soak in. Like all arroyos, we expect the channel will meander around and cause some erosion areas, which is to be expected unless we want to armor the channel, which we do not. There are three locations where we force the arroyo channel to go back towards the middle and where a rock structure controls the vertical grade of the channel. This system provides some external boundaries within which the arroyo system can evolve and at the same time prevent it from incising too deeply or meandering into adjacent private properties.</p> <p>In the Santa Fe County parcel #1 (NE of Cave Rd crossing), we have an area that has not seen much stormwater since the mining company built a tipple there and dug a ditch on the west side of the valley to manage floodwater. The design drawings for this area are being expanded from the previous edition to show a shallow, small meandering channel that will connect with the existing floodplain and be vertically controlled with small rock grade control structures. Most importantly, there will be a large grade control structure at the north end of this parcel to prevent headcutting. We do not expect the new arroyo flows will erode any existing gob piles.</p>

Comment No.	Name	Issue/Comment	Date	Response
61	Kiera Quinn	<p>5) I get that some people are not comfortable with this work on their properties, but this seems like it will result in only a partial result. This town is very used to doing our own work, and we have several individuals who are trained in these types of things. I would very much request that as part of this process, the town is looped in. I would love for education in the maintenance of these structures be part of the plan. I would hope that as people see the positive effects of the structures and plantings, that some of these people who were hesitant will see the value. By the point the effects are seen, it would be up to the local community. The community needs the tools to continue to make improvements in the future. There has been significant interest in having a local group take this on.</p> <p>I think this project is, on the whole, necessary. But I would like the project be done in as low- impact type way as possible. And I would like to make sure that the environment is left in a better state. I understand that the environmental study focused on endangered species, and that is clearly very important, however, this whole ecosystem is very fragile and needs to be handled delicately. This town has already seen an enormous amount of devastation, from mining, railroad, flooding, etc. But this project has the potential to be either more devastating or part of the healing process. I would much rather see it be the latter.</p> <p>I know they have also sent in comments, but I would highly recommend listening to this podcast that some of our local experts did. The last 2 episodes are about this project, and they dive into a lot of the debate that the town is having, and a lot of the nuance that the designers need to understand about our community. https://www.mixcloud.com/andybramble/bramble-on-dancing-through-the-apocalypse-112/</p>	2/7/2024	<p>The AML Program is planning to provide a more detailed site plan in the next set of engineering designs. A revegetation plan will also be created. An additional public meeting will occur to present these updated plans for the Arroyo.</p> <p>The AML Program signed a Cooperative Agreement with the MLA in 2018 to establish post-construction maintenance procedures and responsibilities. The MLA will be responsible for maintaining these features and if requested can provide additional training to a local community group on how to maintain these structures.</p> <p>The Madrid Stormwater Project has been designed to be as minimal and low-impact as possible while also working effectively to convey stormwater away from properties.</p>
62	David Decker	I have a house on 37 Back Road in Madrid New Mexico and I'm not cool with the project you're doing. I have an easement that goes into my driveway and you're blocking my easement. If you have any questions please call me back. I am not cool with the project you're doing and I own property on 38 Back Road NM.	2/6/2024	Based on our search of property and conversations with the Madrid Landowners Association and Santa Fe County, there are no easements crossing the County Open Space or what was previously owned by the MLA for 37/38 Back Road. There are some utility easements along the perimeter of this area.
63	Unknown	My comment on the Madrid Arroyo Demolition Plan and ask that it not be bulldozed. I live here and hike the Arroyo all the time and I don't think the ecosystem should be destroyed by bulldozing. I hope there could be another way of addressing whatever issues that they have without bulldozing and that's very important to me and would like to be in the strongest terms possible say please don't do it.	2/6/2024	Comment is noted. The AML Program is planning to provide a more detailed site plan in the next set of engineering designs. A revegetation plan will also be created. An additional public meeting will occur to present these updated plans for the Arroyo.
56	Ellen Dietrich	General- Throughout the DEA, there is an inconsistent use of the terms "historic" and "historical". Please check to determine which term is correct in each section	2/7/2024	Will review and update this as needed for the next release of the EA.
56	Ellen Dietrich	Section 1 and 1.1 Please insert the figures into the EA on pages immediately following the callouts in the text. When the DEA was first made available, these figures were not included in the hard copies or through online links. It is easiest to read if the figures are inserted as close to the text callout as possible.	2/7/2024	The figure (map) is referenced in multiple locations, so it could only be inserted after the first mention and would then need to be referenced back for other mentions. The Engineering Plan figures are too large to be within the EA document which is why they are included separately. Therefore, these items are likely to remain separate. However, the AML program will be sure to post all Appendices and Figures when first posting the next release of the EA.

Comment No.	Name	Issue/Comment	Date	Response
56	Ellen Dietrich	Section 1.1 At the January 25 public meeting, it was stated by the AML Project Manager that the APE was expanded after the DEA was finalized. Without knowing how much acreage was added or where, it is impossible to understand the potential effects of this added acreage. Unless this additional area only comprises a few acres and has characteristics and uses that are adjacent and the same as locations already analyzed in the DEA, a supplemental EA must be prepared that displays the location of this additional area and facilitates the disclosure of the potential effects of actions proposed within it. According to Section 5.4 of the NEPA Handbook, a supplemental DEA must be prepared if, after circulation but before implementing the federal action, "substantial changes are made to the proposed action that are relevant to environmental concerns." This is in keeping with the NEPA purpose of disclosure of potential effects to decision-makers and the public. It further states in Section 5.4.1 of the NEPA Handbook that "'Substantial changes' in the proposed action may include changes in the design, location, or timing of a proposed action that are relevant to environmental concerns." It goes on to state that a supplemental DEA is needed if "the changes would result in significant effects outside of the range of effects analyzed in the EA..." The only way to determine whether there would be significant effects is to analyze the potential actions and effects of the entire APE in the EA.	2/7/2024	Yes, AML is planning to update the EA to include the addition to the Proposed Action. Unfortunately, the need for the addition to the Proposed Action came up after the public meeting was planned, so it was decided to go through with the public meeting anyway to receive feedback on the other portions of the Proposed Action.
56	Ellen Dietrich	Section 1.5 In the first sentence, it states that the PA is required to conform and comply with the listed regulations and statutes. In reality, all action alternatives, including Alternative B, are required to conform and comply, not just the Proposed Action.	2/7/2024	Will update this in next release of EA.
56	Ellen Dietrich	Section 2.1 This section (4-6) would benefit from some figures that display typical drawings of the proposed stormwater control structures. It would also benefit from a reference to the engineering designs to help readers understand what is proposed.	2/7/2024	Depending on the arrangement of the EA, will include typical drawings within the document or references to such in engineering designs. Overall, the revised EA will add better references to all appropriate engineering designs.
56	Ellen Dietrich	Section 2.1 The engineering designs include "Exclusion Zones" on sheet G006. There is no explanation of these exclusion zones in the DEA. The engineering design sheet does not include a legend so it is difficult to understand the purpose of the exclusion zones and how they fit into the PA. Please add an explanation in the EA and a legend to the engineering design sheet.	2/7/2024	The term exclusion area was utilized during the planning stage to identify sensitive locations. The areas within these zones that could not be avoided will be addressed through a process outlined in a Memorandum of Agreement (MOA) between the EMNRD, SHPO, and OSMRE. The term "exclusion zone" will be removed from the engineer drawings and the EA to reduce confusion as it is not applicable to the current designs.
56	Ellen Dietrich	Section 2.1 The location of the staging area for equipment and other storage should be included in the description of the PA. It isn't clear if this is included in the APE but it should be included so that impacts to it are considered.	2/7/2024	Will include this in the next release of the EA.
56	Ellen Dietrich	Section 2.1.2 Some background on why the Madrid Arroyo needs to be "re-graded" would be helpful here for the public to understand why this is needed. I recommend explaining, either here or in Chapter 3 that there is accumulated sediment deposition, debris, and trash in the arroyo that constrains water flow, and which should be removed to increase capacity for the arroyo to safely transport stormwater and limit overbank flooding. It appears that this additional channel capacity would be needed to handle the increased stormwater that would be directed to the main channel after being diverted from the proposed sites upstream. This increased flow is an assumption on my part at this time based on the design proposal but needs to be considered and discussed in Chapter 4 if engineering designs show this to be correct. If, in fact, stormwater flows would be decreased due to better surface water infiltration under the PA, then that should be presented and may affect the need for proposed channel changes in the Madrid Arroyo.	2/7/2024	Comment is noted. More detail will be provided in the next release of the EA to include this background information and as well as the detailed arroyo plan.
56	Ellen Dietrich	Section 2.1.2 In the description it is stated that deflectors "would be installed in the channel to prevent lateral erosion." This terminology of "preventing" erosion also is used in subsequent sections of the EA. In reality, the erosion, lateral or otherwise, would not be prevented but would be minimized. Please correct this throughout the EA to be more accurate and to avoid misconceptions by the public.	2/7/2024	Will update this in next release of EA.
56	Ellen Dietrich	Section 2.1.2 Would the excess fill added to the existing railroad grade be stabilized in some way to minimize erosion? If not, it would eventually end up back in the arroyo.	2/7/2024	There will be gravel surfacing on the top. This area will be addressed in the new engineering designs and revegetation plan.
56	Ellen Dietrich	Section 2.1.3 This section describes a "rock-lined gravel roadway" at Firehouse Lane "to convey stormwater ..." This description doesn't correspond to the engineering drawings, which show a slightly sloped gravel road alongside a channel that would convey the stormwater. Note that the notes on engineering design sheet C011 describe a crowned gravel road, not a road with a 2% grade angled towards the conveyance channel as displayed in the Construction Notes. Also, the DEA	2/7/2024	Firehouse Lane is currently designed as a crowned road south of Red Dog Road and an inverted crown with valley gutters to the fire house. The roadside channel has been eliminated except to a "bar" ditch to convey local flow.

Comment No.	Name	Issue/Comment	Date	Response
		describes "an inverted crown gravel roadway" which is not what is presented on the engineering sheet. Please clarify the proposed design of the road in the EA and on the engineering sheets.		
56	Ellen Dietrich	Section 2.1.3 In this paragraph, it describes "A drainage structure placed midway along the Firehouse Lane would pass the gravel road through a buried concrete storm drain system and feed into Madrid Arroyo." It seems that this sentence is either incomplete or in error. I assume it is referring to stormwater that would be carried through the concrete storm drain system and into the arroyo, not the road itself. Please clarify.	2/7/2024	Stormwater will be collected via two 24” concrete culverts and conveyed to the arroyo in a channel.
56	Ellen Dietrich	Section 2.1.5 If the mine adit reopened due to stormwater and resulting erosion, what is being proposed to reduce the risk of this occurring again in the future?	2/7/2024	To our knowledge this mine adit was backfilled with nearby fill material in the mid 1980s. Our program has noticed that over the years, particularly with coal mine closures, backfills commonly fail and open back up. Our initial plan is to use a small excavator to open back up the mine feature to identify the condition of the mine workings below. If the workings are still in good condition, we will likely build a grouted rock bulkhead at the entrance and then backfill the feature. If the mine workings are not in good condition, we will likely use polyurethane foam (PUF) to plug the enclosure and then cap it with nearby fill. Both these remediation methods have shown high closure success rates.
56	Ellen Dietrich	<p>Section 2.1.6 A section describing mitigation measures and associated BMPs designed to minimize adverse impacts under the action alternatives should be added for the PA or in a separate section in Chapter 2. Some of these proposed mitigation measures are displayed and noted on the engineering drawings but not incorporated into the DEA. In the DEA, it states that BMPs and mitigation measures would be implemented without explaining what they would be and where. Right now, it requires the public to trust that these would be implemented and would work without providing a way to evaluate their effectiveness. Including this section might help explain to those residents concerned about destroying the Madrid Arroyo that, while some vegetation and deposition removal are planned, the arroyo would be sufficiently revegetated and result in beneficial effects over the long term.</p> <p>Monitoring activities should be included in this section, as well as a way to evaluate when mitigation measures such as reseeding are considered successfully completed. There are areas of previous revegetation efforts completed during past AML projects that were unsuccessful, possibly due to a lack of monitoring before turning over the project to local maintenance. This has been used by those objecting to this new proposed project to demonstrate that the arroyo and other disturbed areas would not be stabilized, despite AML descriptions in the DEA.</p> <p>According to the NEPA Handbook on page 9-7, "Mitigation measures and environmental commitments needed to reduce impacts below significance should be incorporated into the alternatives, where appropriate. These mitigation measures then become an integral part of the alternative. In other words, if mitigation measures are needed to implement the alternative, the alternative needs to describe the mitigation measures."</p>	2/7/2024	<p>The construction contractors will be responsible for preparing erosion and sediment control plans and applying for required permitting (Construction NPDES and notice of intent). However, typical best management practices (BMPs) could include silt fencing, rock check dams, and straw wattles.</p> <p>During construction – the construction contractor will be required to develop and implement a Stormwater Pollution Prevention Plan (SWPPP). AML will reserve the right to review and approve this plan prior to implementation, and AML will provide construction inspectors to verify continued compliance with the plan during construction. Per USEPA requirements, the SWPPP will include various stormwater BMPs. However, the exact method and location will be determined in the early phase of construction, not now, in the design phase. We do not specify the means and methods a contractor must use on a project, and we do not necessarily know the sequence of work areas and disturbances in advance.</p> <p>After Construction – A comprehensive revegetation plan is currently under development and will be available for review. AML plans to invest much more than the minimum EPA BMP of seed & mulch for disturbed soil areas. The revegetation plan will include aggressive methods of re-establishing native grasses, some shrubs, and limited drip irrigation to help with plant establishment. The goal is to achieve a sustainable level of site-adapted vegetation to control surface soil erosion and re-establish the native plant vernacular of the Madrid area. A formal park-like landscape is not proposed.</p>
56	Ellen Dietrich	Section 2.2.2 Overbank flooding would be reduced or minimized, not prevented, by adding the excess fill to the railroad grade. Please correct.	2/7/2024	Comment is noted. Will update in the next release of EA.
56	Ellen Dietrich	Section 3.2 Table 1 is missing any totals for Property Type 5.	2/7/2024	Comment is noted. Will update in the next release of EA.
56	Ellen Dietrich	Section 3.2 Table 2 should be inserted immediately following the callout and not in the middle of Section 3.3.	2/7/2024	Will work on layout to see what's possible.
56	Ellen Dietrich	Section 3.4.2 The last two sentences referring to the need for a nationwide permit for the PA are more appropriate for Section 2.1.2 as part of the description of the PA. Also, note that a permit would be required, not just "is likely required" and change "will" to "would" because the project is not yet approved.	2/7/2024	Yes, section 2.1.2 will be updated regarding the permit. The EA was originally prepared prior to the permit being finalized and will be updated appropriately.
56	Ellen Dietrich	Section 3.4.3 A map of the drainages, discharge points, and sample locations would be very helpful here.	2/7/2024	The water quality report will be added as an additional appendix. This level of detail will not be included in the EA itself.
56	Ellen Dietrich	Section 3.4.3 There should be some discussion of existing surface water quantity and groundwater quality.	2/7/2024	The next release of the EA will include some additional surface water quality information. However, this project is not expected to impact ground water, and this will not be discussed further.
56	Ellen Dietrich	Section 3.6 The BISON-M reference should include a date and be added to the Reference List (Section 9.)	2/7/2024	Comment is noted. Will update in the next release of EA.

Comment No.	Name	Issue/Comment	Date	Response
56	Ellen Dietrich	Section 3.6.1 The BA/BE should be identified as Appendix E.	2/7/2024	Comment is noted. Will update in the next release of EA.
56	Ellen Dietrich	Section 3.8 The primary source for the soils data (NRCS soil survey) should be shown, rather than crediting GMEC 2019b unless you mapped the soils as part of the BA/BE preparation (doubtful.)	2/7/2024	Comment is noted. Will update in the next release of EA.
56	Ellen Dietrich	Section 3.8 While the soil survey descriptions are somewhat useful especially where characteristics like soil drainage, depth to water table, runoff classification, and flooding frequency are included, it would be much more useful to the reader's understanding if you include information related to land capability classes and limitations for use. Including that kind of information, especially with a map showing severe limitations for erosion and surface stabilization, would help the reader evaluate the potential success of the proposed erosion controls and other mitigation measures. As noted on page 9-8 of the NEPA Handbook, "the discussion of the affected environment should not simply be an inventory of resources."	2/7/2024	A review of further existing data will be completed to assess what is available to be included in the EA.
56	Ellen Dietrich	Section 3.8 I understand that core sampling was performed at key sites within the APE. The information on soil and geologic characteristics would be helpful to present here to better describe the affected environment.	2/7/2024	A review of the geotechnical report will be completed to assess pertinent information to include in the EA.
56	Ellen Dietrich	No Section- Add a section on existing air quality because there is a potential for adverse short-term impacts during construction (equipment emissions and wind-blown sediment from disturbed areas) and for air quality benefits following stabilization of disturbed areas.	2/7/2024	Will include either an air quality section or a discussion in the human health and safety section for the next release of the EA.
56	Ellen Dietrich	Section 3.9 There should be some discussion of noise levels included in this section to facilitate disclosure of short-term, temporary increased noise levels due to construction equipment, vehicle traffic, and construction workers.	2/7/2024	Will include a noise section in the next release of the EA.
56	Ellen Dietrich	Section 3.10 Add Census references to Section 9.	2/7/2024	Will update in next release of EA.
56	Ellen Dietrich	Section 3.10.3 There needs to be an explanation of why EJ is considered. Right now, the DEA presents some data but doesn't explain why it is there. Also, please add some narrative to describe the indices presented from the EJScreen such as what they are, why there are included, and how they contribute to the effects analyses. If that is not done, then I recommend deleting Table 3 and its preceding discussion because it adds nothing to the analysis. As stated in Section 9.4 on page 9-4 of the NEPA Handbook, "Only those factors of the existing environment that might influence or be significantly affected by the proposed action needs discussion."	2/7/2024	Will update this section in the next release of the EA.
56	Ellen Dietrich	Section 3.10.3 The last paragraph of this section should be moved to Section 1.6 Public Involvement	2/7/2024	Will add the reference to CEQ in Section 1.6 but Section 3.10.3 will remain as is or be updated as needed for EJ issues.
56	Ellen Dietrich	Section 4 A brief explanation of terms would be helpful in the introduction to this section For example, it would be useful to explain that potential beneficial and adverse impacts must be considered and are described in terms (to be defined) like short- and long-term, direct and indirect, and irreversible and irretrievable commitments of resources, per page 9-8 of the NEPA Handbook.	2/7/2024	Will update for the next release of the EA.
56	Ellen Dietrich	Section 4 The impacts to the human environment described in this chapter should include the acreage added to the APE as well as the staging area, if that is not included in the additional APE acreage.	2/7/2024	Will update for the next release of the EA.
56	Ellen Dietrich	Section 4 Throughout this chapter, the narrative should use the term "would" and not "will" where the impacts to resources are described because the project has not yet been approved and the impacts described are potential impacts to be disclosed, not ensured at this point. Please correct	2/7/2024	Will update for the next release of the EA.

Comment No.	Name	Issue/Comment	Date	Response
56	Ellen Dietrich	Section 4.2 This is the first time the term viewshed is introduced (4.2). However, it is not defined. A brief description of the viewshed, or at least introduction of the term, should be included in Section 3.3	2/7/2024	Will update terms and definitions in the next release of the EA.
56	Ellen Dietrich	Section 4.3 Given that there would be increased infiltration of stormwater runoff following installation of the structures proposed under the PA, there would most likely be changes to surface water quantity during runoff events, as well as to water quality. Also, what would be the effects to water quantity (stormwater runoff) from diverting the water through proposed constructed channels and other structures to the arroyo? Would flows in the Madrid Arroyo increase, which is why the removal of sediment and debris in the channel is warranted to minimize overbank flooding? Please add a discussion of the potential effects to water quantity to facilitate an understanding of the reasons behind the proposed engineering changes in the arroyos.	2/7/2024	Net increase in upland flow is zero, water is simply being channeled. Removal of some sediment from Madrid Arroyo within the County Open Space is necessary to control floodwaters and thereby protect several homes on the east side of Cave Road from flooding in a 100-yr event. The primary water quality impairment in Madrid Arroyo is sediment. The proposed arroyo channel and floodplain grading will result in some sediment deposition, but there will still be some sediment through-put in larger flood events, which should be closer to the natural flux in sediment concentrations. Concentrations of other pollutants in stormwater runoff from the developed areas of Madrid are not expected to be significant. Nonetheless, an active floodplain next to the arroyo channel (as designed) provides a passive means of trapping some of these sediments in shallow flow across vegetated floodplain areas.
56	Ellen Dietrich	Section 4.3.2 It seems that there would be higher rates of stormwater runoff due to increased acreage of hardscape (concrete channels, paved roads, for example.) Add some information related to how the runoff would be increased under Alternative B and what the potential impacts would be to downstream channels.	2/7/2024	The next release of the EA will include this additional comparison of water runoff/infiltration.
56	Ellen Dietrich	Section 4.6 This section is very cursory and doesn't clearly explain the potential effects of implementing the alternatives. For example, it states that "Existing roads would be utilized to the extent possible..." Used for what? Just for access or for other purposes like installation of pipelines and other structures? It also refers to "erosional features" being proposed. Is this referring to erosion controls or something else? This term was not used anywhere else in the DEA and is too vague. It also states that "Tree removal may occur in localized areas..." but that conflicts with the PA description in Section 2.1.2 that describes plans to grade the Madrid Arroyo as well as Sheet C-202, Madrid Arroyo Demolition Plan, that states all shrubs and trees would be removed.	2/7/2024	This section will be updated and expanded with the new revegetation plan with the next release of the EA.
56	Ellen Dietrich	Section 4.6 The DEA should describe potential impacts to vegetation from the staging area, which was identified at the public meeting (but not in the DEA) as being located within the county open space area above the ballpark and may expand into the parking lot owned by the MLA. If heavy equipment and materials are stockpiled there, the vegetation and soils there would be disturbed and would need to be stabilized.	2/7/2024	This will be updated in the next release of the EA. This was an addition to the PA after the public meeting was planned and therefore discussed but not included so AML could still receive comments on other portions of the project.
56	Ellen Dietrich	Section 4.6.3 Under the NAA, there would be continuing water and wind erosion from bare or sparsely covered areas, so adverse impacts to vegetation would continue to occur, contrary to the statement in the DEA that states there would be no adverse effects.	2/7/2024	Will update in next release of EA.
56	Ellen Dietrich	Section 4.7 This section could make use of information from the core samples and soil survey to describe the effects of disturbing the soils during construction and how they would most effectively be stabilized post-construction. Currently, the DEA just sends the reader to Section 6.7 and states that the mitigation strategies would reduce or eliminate adverse effects. However, Section 6.7 skims over what mitigation measures would be used so the conclusion that stabilized soils would provide beneficial effects is unsupported.	2/7/2024	Will review the existing information to assess what additional pertinent data can be added for the analysis.
56	Ellen Dietrich	Section 4.7 Wind erosion of soils (4.7) is also a factor, especially when soils are bare during construction. This needs to be presented as a potential impact that must be mitigated.	2/7/2024	Will update in next release of EA.

Comment No.	Name	Issue/Comment	Date	Response
56	Ellen Dietrich	<p>Section 4.7 What would the potential effects to soils be in the staging area? With equipment and materials stored there, these erodible soils would be disturbed but no plan for how this water and wind erosion would be minimized is evaluated. At the public meeting, Leeland stated that they might consider adding mulch to the soils to stabilize the area. However, this is not presented in the DEA and should be considered completely inadequate, given the broad expanse of bare ground that would be subject to frequent wind erosion and the relatively high erosion potential of these soils. There is already a problem of stormwater and sediment from water and wind erosion being directed from a portion of the upper parking lot towards the historical stone walls at the northern end of the ballpark. Leaving the soils bare in the staging area would contribute to that problem.</p> <p>How would mud and dirt be prevented from being dragged onto NM-14 from the staging area? Often at construction sites outletting onto paved roads, there are stone and gravel patches installed at the entrances/exits to knock off some of the dirt from tires before exiting onto the road. This is a temporary fix that would need to be maintained.</p>	2/7/2024	<p>A discrete area for excess soil placement is planned adjacent to the parking area above the ballfield (see forthcoming design drawings). The placement, compaction, grading, and drainage of this new soil area is planned to minimize erosion potential and impacts to adjacent land areas. AML and MLA have reached an agreement on allowing the construction contractor to use this parking area for temporary staging during construction and includes a provision that the site will be graded after the term of construction. It is a large enough area that stormwater BMPs will be required and will likely include some form of sediment detention/filtration at the NE corner of the site where the natural drainage goes.</p> <p>Regarding mud being dragged onto SR 14 – The SWPPP will address this with the inclusion of a mud tracking pad and a requirement to periodically clean any mud from the public road. A more pervasive problem which is not mentioned in this comment is dust. The project specifications and bidding documents will address dust mitigation directly, by mandating certain mitigation measures and creating a pay item for that work.</p>
56	Ellen Dietrich	Section 4.8 Increased ambient noise levels and emissions from heavy equipment and workers throughout the APE should be discussed. While this would involve relatively short-term, temporary impacts, it would be significant to residents living near project construction sites and needs to be disclosed in the EA.	2/7/2024	A noise section will be added to the next release of the EA.
56	Ellen Dietrich	Section 4.11 Blocking off the upper parking lot for staging and storage of equipment and workers throughout the APE should be discussed. While this would involve relatively short-term, temporary impacts, it would be significant to residents living near project construction sites and needs to be disclosed in the EA.	2/7/2024	The EA was released prior to the addition of this portion of the proposed action. The next release of the EA will include this type of information in the transportation sections.
56	Ellen Dietrich	Section 6 In general, the description of mitigation measures needs to be much more clearly described and should include details that can then be spelled out in the FONSI.	2/7/2024	Comment is noted. The next release of the EA will include more detailed mitigation measures in Section 6.
56	Ellen Dietrich	Section 6.3 Rather than leaving the mitigation measures and appropriate BMPs necessary to minimize adverse impacts up to the construction contractor to determine in the SWPPP and the Corps of Engineers under their permit, the mitigation measures should be described here so there is disclosure to the decision-makers and the public: Also, what kind of monitoring would there be and for how long? How will AML determine when an area is successfully stabilized and adequate to turn over to the local owners or authorities for maintenance?	2/7/2024	<p>The construction contractors will be responsible for preparing erosion and sediment control plans and applying for required permitting (Construction NPDES and notice of intent). However, typical best management practices (BMPs) could include silt fencing, rock check dams, and straw wattles.</p> <p>During construction – the construction contractor will be required to develop and implement a Stormwater Pollution Prevention Plan (SWPPP). AML will reserve the right to review and approve this plan prior to implementation, and AML will provide construction inspectors to verify continued compliance with the plan during construction. Per USEPA requirements, the SWPPP will include various stormwater BMPs. However, the exact method and location will be determined in the early phase of construction, not now, in the design phase. We do not specify the means and methods a contractor must use on a project, and we do not necessarily know the sequence of work areas and disturbances in advance.</p> <p>After Construction – A comprehensive revegetation plan is currently under development and will be available for review. AML plans to invest much more than the minimum EPA BMP of seed & mulch for disturbed soil areas. The revegetation plan will include aggressive methods of re-establishing native grasses, some shrubs, and limited drip irrigation to help with plant establishment. The goal is to achieve a sustainable level of site-adapted vegetation to control surface soil erosion and re-establish the native plant vernacular of the Madrid area.</p> <p>The SWPPP/NOI would determine the length of monitoring and duration until stabilization, but often it is 1-year.</p>
56	Ellen Dietrich	Section 6.6 & 6.7 More detail on the mitigation measures that would be required to establish vegetation and stabilize soils in disturbed areas is needed. Also, what BMPs are likely to be implemented? What kind of monitoring would there be and for how long? How will AML determine when an area is successfully stabilized and adequate to turn over to the local owners of authorities for maintenance?	2/7/2024	Comment is noted. The AML Program is planning to provide a more detailed site plan in the next set of engineering designs. A revegetation plan will also be created. The revegetation plan should include specifications that define the plant survival requirements. An additional public meeting will occur to present these updated plans for the Arroyo.
56	Ellen Dietrich	Section 6.8 What is planned to minimize disturbance to residents and visitors during construction? Would equipment operation be limited to certain hours of the day to reduce noise levels from equipment? Would heavy equipment have any requirements for the reduction of emissions and noise?	2/7/2024	Further discussions regarding timing will take place and be incorporated into the EA. Likely, the majority of work would be conducted during winter months (January to April) to lessen the impacts to businesses, the community, and tourism. Work on the water tank area and gob piles (drainage channels) are less impactful and may be completed throughout the year as needed. The Contractor shall assure that all equipment used in the contract work is fitted with standard noise suppression devices.

Comment No.	Name	Issue/Comment	Date	Response
57	J. Sanchez	<p>I know I'm a bit late to the table on this but still wanted to share some points...</p> <ul style="list-style-type: none">• First and foremost... DO IT! It's blithe and a major fire hazard!• Don't be fooled by the 'vocal minority', the vast majority of us want Madrid cleaned up and this project is the perfect way to jump start that effort. Sadly, the vast majority of us are also just really busy and don't have to luxury of time to rattle cages and beat on drums.• Vocal Minority... keep count and you'll realize these are just a handful of folks hell bent on keeping the tax table and property values low to discourage others from moving here. They bitched to no end and kill the cell tower project every time it comes up- a tower none of them would see its so far back. They do this because week mobile and internet discourages new folks from moving in. But that too, the vast majority want.• Shanty Town... daily I see folks on Facebook complaining how tourism has steadily dropped. Yes those same folks don't want to change anything. Shanty Town look isn't selling any more, again the vast majority of us want it cleaned up, and to be honest, so do the tourists.• Not a damn one of them care about the 'natural vegetation' and clump of trees. It's just an excuse to scare the county and development off. 90% of the 'natural vegetation' is an atrocity of weeds, 5% are invasive trees and plants, the other 5% is literal garbage/trash. I lost count of the times I've seen the same vocal minority dump their weeds, cuttings, and rubbish in that same arroyo.• Lastly, an idea & suggestion. Shut them up by planting a few native trees. Suggestion, that arroyo diagram passed around is shaped damn near like a running track. So after its plowed down and trees planted, why not just lay on top of the arroyo path, some of the ever-growing mountains of crushed asphalt that keeps piling up on county property? Make it a walkable path... if you did that, I guarantee those very same loudmouths will absolutely be the first to use it. <p>That's it, I'm speaking on behalf of many of my neighbors who don't want to tussle with the 15 at best, townies that gripe about anything, and I do mean anything, that hints at progress and development.</p> <p>Feel free to call me anytime. Of our group, I'm finally taking to time to communicate OUR thoughts.</p>		<p>Comment is noted. The AML Program is planning a revegetation plan with plantings of both native grass, shrubs, and trees.</p>