

Problems



Solutions



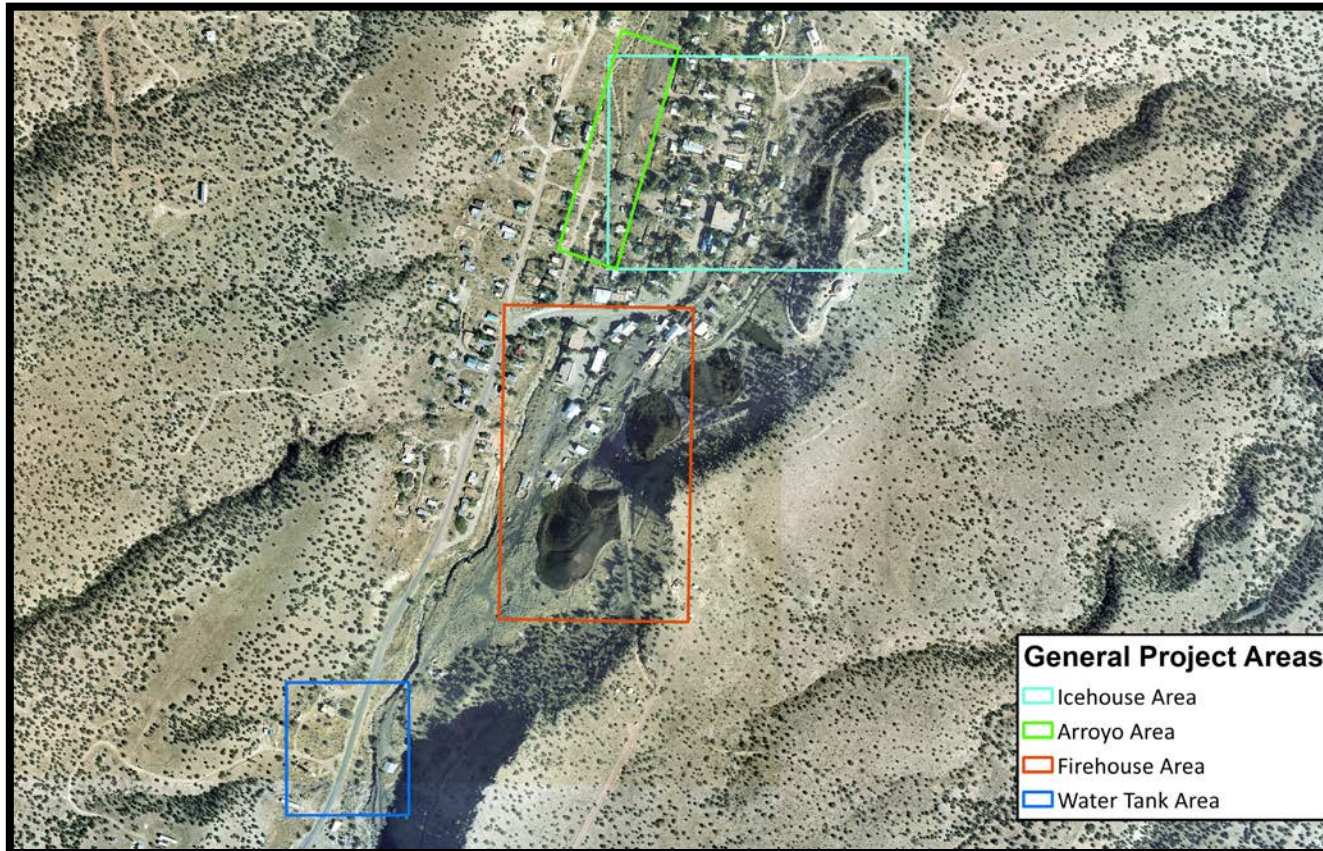
Madrid Stormwater and Erosion Safety Project



In 2019, the State of New Mexico Abandoned Mine Land Program (AML) will begin developing alternatives for addressing multiple adverse effects of historic coal mining practices in Madrid, New Mexico.

The scope of work presented in this brochure includes three project areas, each with specific goals. Project partners include but are not limited to the Madrid Landowners Association, the Madrid Water Cooperative, Santa Fe County Open Space, and the New Mexico Department of Transportation.

Project Area Map



Contact Information

The Abandoned Mine Land Program receives funds from the Office of Surface Mining Reclamation and Enforcement to identify, safeguard, and reclaim pre-1977 abandoned mines that present a public safety hazard or environmental detriment.

For questions about this project, contact:
Jacob Pederson at:
(505) 629-9677 or by email at:
jacob.pederson@state.nm.us

What's Next?

- Work directly with property owners to identify project constraints and secure remaining rights of entry
- Complete necessary natural resource, cultural resource, and engineering surveys
- Develop alternative actions to be reviewed by project partners, property owners, and the community

Issues to be Addressed within Project Areas

Icehouse Area

Goals

- Reduce flooding and coal waste sedimentation in homes, businesses, and roads
- Increase water retention and infiltration on east slope near concentrated coal waste areas
- Reduce long-term maintenance costs of stormwater systems
- Address emergency vehicle access in east Madrid during large storm events
- Address flooding at the low point on Highway 14 and assist conveyance of stormwater past private properties to the Madrid Arroyo

Arroyo Zone

(joint project with Santa Fe County)

Goals

- Ensure safe and sustainable conveyance of stormwater into the Madrid Arroyo

Firehouse Area

Goals

- Reduce coal waste movement downhill toward Firehouse Lane
- Increase water retention and infiltration on east slope near concentrated coal waste areas
- Reduce stormwater flows from Firehouse Lane toward commercial properties to the north

Water Storage Area

Goals

- Improve security and reliability of stored water that supplies Madrid's fire hydrants