

2021 COMMUNITIES AT RISK ASSESSMENT PLAN

847 Communities at Risk/69 CWPPs Completed



Photo: Lake Fork Fire, Jemez Mountains, November 6, 2021 – EMNRD, Forestry Division

Prepared by the Energy, Minerals and Natural Resources Department (EMNRD), Forestry Division:

Laura McCarthy, State Forester

Donald Griego, Deputy Director for Fire

Vernon Muller, Resource Protection Bureau Chief

Charles Alcon, Law Enforcement Officer

Robert Brown, Program Manager

Wendy Mason, Wildfire Prevention and Communications Coordinator

TABLE OF CONTENTS

Executive Summary	3
2020 Accomplishments	5
Table 1 – Completed Community Wildfire Protection Plans	6
Table 2 – List of Communities at Risk	9
Maps 1 – CWPP Coverage	32
Maps 2 – CWPP Risk Rating	33
Appendix 1 – Community Wildfire Protection Plan Checklist	34
Appendix 2 – Reference List	36

EXECUTIVE SUMMARY

The 2003 New Mexico Legislature created the New Mexico Fire Planning Task Force (NM-FPTF) to identify the state's Wildland Urban Interface (WUI) areas most vulnerable to wildland fires and develop standards for building codes and ordinances to reduce the threat of wildland fires to those communities.

WUI CODES

The NM-FPTF adheres to the International Code Council's Wildland Urban Interface Code. New Mexico counties and communities are encouraged to adopt these codes and ordinances to further reduce the threat of wildland fires to their communities.

CWPP

The NM-FPTF reviews new or updated Community Wildfire Protection Plans (CWPP) each year and approves those that meet all criteria set forth by the Healthy Forest Restoration Act. Completed and approved CWPP are placed within the Fire Management section of the Forestry Division's website, <https://www.emnrd.nm.gov/sfd/>.

Each CWPP contains a list of the communities at risk from wildfire. These are compiled to create the New Mexico Communities at Risk list (see Table 2). Communities are added or deleted, and ratings may be changed, with the development of a new CWPP or with the revision of an older CWPP. The NM-FPTF publishes all updates and revisions to the list and provides a final report to the Governor and New Mexico Legislature by December 15th of each year.

History (CPZ to CWPP)

In 2003, the state was divided into 18 Community Protection Zones (CPZ). Inside these zones were 234 communities that were evaluated for their wildland fire risk. Using standard hazard risk rating methodology, these communities were rated as high, medium, or low risk. Since then, the communities have been encouraged to develop a CWPP. All communities initially identified in the CPZs have since been reevaluated in the formation of their CWPP.

Value of a CWPP

A CWPP should identify areas that need vegetative fuels removed to reduce wildfire risk and severity, suggest methods to reduce structural ignitability, and evaluate a community's firefighting capacity. This planning process helps unite communities by identifying their risk to wildfire, their community values, and their critical infrastructure. Factored together, these concerns should produce a prioritized list of vulnerable areas to be treated, as well as the potential treatment options.

The CWPPs provide communities with opportunities to influence where and how federal agencies implement fuel reduction projects on federal lands, and the distribution of federal funds for projects on non-federal lands. Many funding options and grants require a jurisdiction to be included in a current and approved CWPP. The communities listed annually in this publication will replace the January 2001

Federal Register listing for communities at risk. The information will be forwarded to federal cooperators for their use and will reside on the EMNRD, Forestry Division's website <https://www.emnrd.nm.gov/sfd/>.

It should be noted that the communities listed within a CWPP are by no means a complete list of areas at risk from wildland fire. Each CWPP has made a concerted effort to list all the communities within their plan's boundaries. The Communities at Risk Subcommittee recognizes that some communities in New Mexico are not currently listed in a CWPP. The NM-FPTF encourages all communities within New Mexico to be in a CWPP.

How do I get started?

A CWPP can take a variety of forms based on the publication "Preparing a Community Wildfire Protection Plan: A Handbook for Wildland-Urban Interface Communities", available at <https://www.eforester.org/>. Communities are encouraged to contact their local Forestry Division district office for assistance when developing or revising a CWPP, and for information on Wildland Urban Interface Codes and fuel hazard reduction programs.

2021 ACCOMPLISHMENTS

The NM-FPTF updated and adopted four CWPPs. The 2021 totals are 69 CWPPs for New Mexico (see Table 1 for a list of plans). The NM-FPTF agrees that all CWPPs should be updated within five years of their adoption by the NM-FPTF. A letter has been sent to all CWPP participants to advise them of the update requirements.

These 69 CWPPs identify 847 communities at risk from wildland fire. Of the 847 communities, 405 are listed as high risk, 290 are listed as medium risk, and 152 are listed as low risk from wildland fire (see Table 2).

Requests for fuel reduction projects to address wildfire threats to communities continue to exceed the available funding. The United States Department of Agriculture (USDA), Forest Service (USFS) has made funds available for these treatments through the National Fire Plan. The United States Department of the Interior, Bureau of Land Management (BLM), through an agreement with New Mexico Counties (NMC), has funded both hazardous fuels treatments as well as public outreach and education projects across the state. Local community groups with state and federal partners continue to develop CWPPs, identify fuel hazard reduction projects, and treat acres across the state.

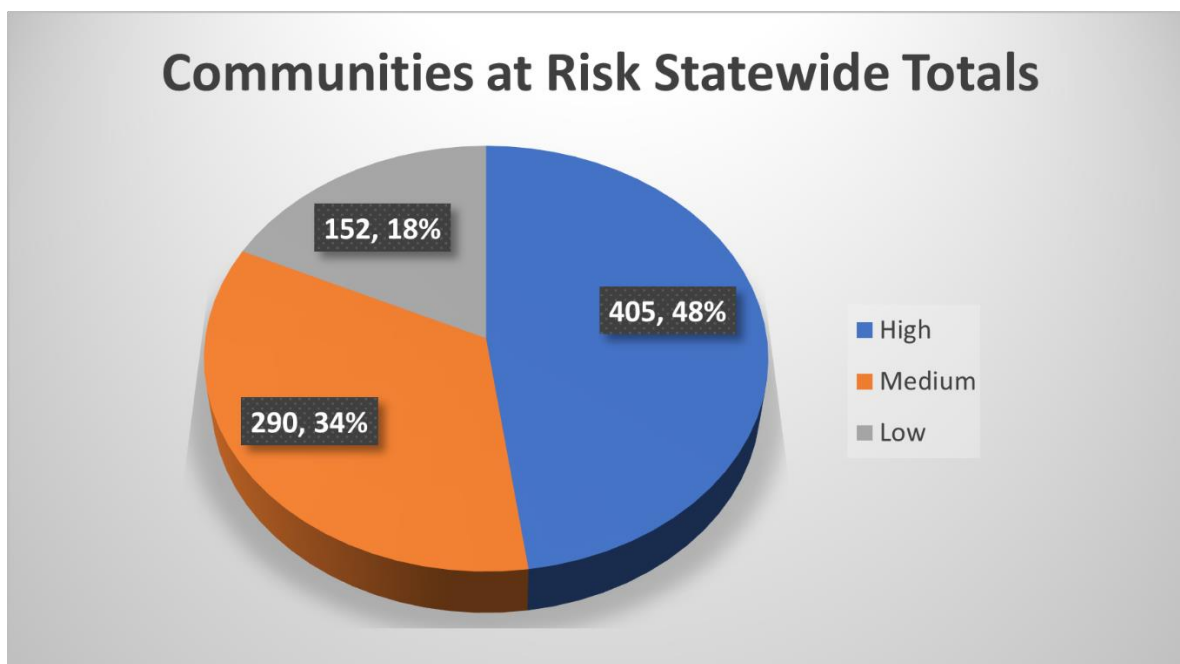


TABLE 1

COMPLETED COMMUNITY WILDFIRE PROTECTION PLANS 2020

CWPP Name	Year of Completion
Angel Fire	2009/2017
Bernalillo County - East Mountains	2015
Bernalillo County - Middle Rio Grande Conservancy District	2007
Catron County	2005/2015
Chaves County	2010/2014
Cibola County	2006/2020
Claunch-Pinto	2008/2017
Colfax County	2008
Colfax County - Ute Park	2006
Colfax County - Taos Pines	2006
Colfax County - Hidden Lake	2006/2017
Colfax County - Elk Ridge	2006
Curry County	2008/2017
Cimarron Watershed Alliance Communities	2008
De Baca County	2008
Dona Ana County	2012
East Mountain	2006/2015
Eddy County	2008
Enchanted Circle	2005

Grant County	2010/2015/2020
Guadalupe County	2008
Harding County	2008
Hidalgo County	2009
Lea County	2008
Lincoln County	2008/2014/2019
Los Alamos County	2009/2017
Luna County	2010
McKinley County	2008/2013/2018
Middle Rio Grande Bosque	2008
Mora County	2005/2019
Otero County	2004/2014/2020
Quay County	2008
Questa	2008
Rio Arriba County	2007/2017
Roosevelt County	2008
Ruidoso Area	2004/2015
Sandoval County	2008
San Juan Basin	2006/2014/2021
San Miguel County	2008/2019
Santa Clara Pueblo	2007
Santa Fe County	2008/2015/2020
Sierra County	2005/2012/2019

Socorro County	2006
Taos County	2009/2017
Taos County – Taos Canyon	2021
Taos County – Gallina Canyon/San Cristobal	2021
Taos Pueblo	2009
Taos County - Peñasco	2012/2018
Taos County – Taos Ski Valley	2017
Torrance County	2008/2017
Union County	2008
Upper Chama	2008
Valencia	2012/2018

Community Wildfire Protection Plans may be viewed at <https://www.emnrd.nm.gov/sfd/>.

TABLE 2

Communities at Risk List 2021

Rating in parentheses shows different ranking from a different plan. Some CWPPs are for an entire county, and some are for local areas within a county, which means that some communities are in more than one CWPP. However, each community is only listed once in Table 2. Risk Rating: High Risk, Medium Risk, Low Risk.

GOVERNMENT/RISK RATING	COMMUNITY	TOTAL COMMUNITIES
Bernalillo County		32
High Risk		19
	Canoncito	
	Canyon Estates	
	Casa Loma	
	Cedar Crest	
	Cedar	
	Chilili Land Grant	
	Dennis Chavez Estates	
	El Refugio	
	El Tablazon	
	Forest Park	
	Los Pinos	
	Ponderosa	
	Ponderosa Pine	
	Primera Agua	
	Rincon	
	San Antonio	
	Sandia Knolls	
	Sandia Park	
	Tijeras	
Medium Risk		13
	Albuquerque	
	Alley Place	
	Barton	
	Carnuel	
	Escabosa	
	Forest (historical)	
	Juan Tomas	
	Los Ranchos de Albuquerque	
	Miera	
	San Antonio	
	Sedillo	
	Yrisarri	
	Zamora	
Low Risk		0

Catron County		18
High Risk		12
	Apache Creek	
	Aragon	
	Datil Area	
	Davenport	
	Elk Springs	
	Jewett Gap	
	Luna	
	Mogollon	
	Quemado Lake Estates	
	Rancho Grande Estates	
	Reserve	
	Willow Creek	
Medium Risk		6
	Coyote Creek	
	Cruzville	
	Glenwood	
	Horse Mountain	
	Pie Town	
	Wildhorse	
Low Risk		0
Chaves County		23
High Risk		4
	Lake Arthur	
	Penasco Valley	
	Roswell, Northeast	
	Tierra Grande	
Medium Risk		19
	Country Club	
	Dexter	
	District 8	
	Dunken	
	Dunken/Penasco School	
	East Grand Plains	
	Hagerman	
	Lake Van	
	Midway	
	Penasco 1 FD	
	Penasco 2 FD	
	Rio Felix FD	
	Roswell, East	
	Roswell, Northeast	
	Roswell, Northwest	
	Roswell, South	

	Roswell, Southwest	
	Roswell, West	
	South Spring Acres	
Low Risk		0
Cibola County		38
High Risk		9
	Bluewater Acres	
	Candy Kitchen	
	Cibola Trails	
	La Jara	
	Lobo Canyon – Cantina Acres	
	Oso Ridge	
	Pinehill	
	San Mateo	
	Timberlake	
Medium Risk		12
	Acoma Pueblo	
	Bibo – Cebolletita - Moquino	
	Bluewater	
	Cloh Chin Toh	
	El Morro Ranches	
	Fence Lake	
	Grants	
	McGaffey Pines	
	Pine Meadows	
	San Rafael	
	Seboyeta	
	Techado	
Low Risk		17
	Acomita – North Acomita	
	Cubero	
	El Morro	
	James Valley – Tierra Verde	
	Laguna	
	McCartys	
	Mesita – El Rito	
	Milan	
	Mountain View	
	Nicoll	
	Ojo Caliente	
	Paguete	
	Paraje – Casa Blanca	
	San Fidel	
	Seama – Philadelphia - Harrisburg	
	Skyline - Ganipa	

	Toltec	
Colfax County		33
High Risk		12
	Angel Fire	
	Black Lake/Black Lake Resort	
	Cimarron	
	Elk Ridge	
	Hidden Lake	
	Idlewild	
	Lakeview Pines	
	Raton	
	Sugarite Canyon State Park	
	Taos Pines	
	Ute Park	
	Vermejo Park Ranch Headquarters	
Medium Risk		14
	Agua Fria	
	Bartlett	
	Carisbrooke	
	Colfax	
	Gardiner	
	Linwood	
	Maxwell	
	Miami	
	Philmont Headquarters	
	Pine Forest Estates	
	Rayado	
	Springer – Taylor Springs	
	Whittington Center	
	Yankee	
Low Risk		7
	Abbott	
	Eagle Nest	
	Elizabethtown	
	Farley	
	NM Boys School	
	Sugarite	
	Tinaja	
Curry County		11
High Risk		1
	Melrose	
Medium Risk		9
	Bellview	
	Broadview	

	Clovis	
	Grady	
	Hachita Hills	
	Jack Rabbit Run	
	Sun Ridge Estates	
	Turquoise Estates	
	Van Acres	
Low Risk		1
	Clovis Industrial Park	
De Baca County		6
High Risk		4
	Lake Sumner	
	Sunnyside (Old Town)	
	Taiban	
	Yeso	
Medium Risk		2
	Fort Sumner	
	Valley	
Low Risk		0
Dona Ana County		11
High Risk		7
	Dripping Springs	
	Fairacres	
	Garfield	
	Las Alturas (Talavera)	
	Mesilla	
	Radium Springs	
	Rincon	
Medium Risk		4
	Chaparral	
	Dona Ana	
	Hatch	
	Vado – La Mesa	
Low Risk		0
Eddy County		17
High Risk		2
	Queen	
	Whites City	
Medium Risk		6
	Artesia	
	Carlsbad	
	Joel	
	Loco Hills	
	Malaga	
	Riverside	
Low Risk		9

	Atoka	
	Carlsbad Caverns	
	Cottonwood	
	Happy Valley	
	Hope	
	La Huerta	
	Loving	
	Otis	
	Waste Isolation Pilot Plant	
Grant County		47
High Risk		37
	Chisholm Ranch Subdivision	
	Cleveland Mine Road - Pinos Mountain	
	Copper Ridge Subdivision	
	Cottage San Road	
	East Peterson - West Racetrack	
	East Racetrack - Santa Clara	
	Faywood	
	Feeley Subdivision	
	Flying A Subdivision	
	Gila	
	Gila Hot Springs - Gila Cliff Dwellings	
	Hanover – Fierro – Santa Rita District	
	Indian Hills Subdivision	
	Lake Roberts	
	Lake Roberts Heights	
	LS Mesa	
	Mangus Springs	
	Mangus Terrance – Bellwood Mobile Home Park	
	Mimbres Hot Springs Ranch	
	Mule Creek	
	North Swan and Dos Griegos	
	Oakwood Estates and Estates 2	
	Old Arenas Valley Road	
	Owens Road	
	Paradise Acres 1	
	Paradise Acres 2	
	Pine Cienega	
	Pinos Altos	
	River Glen Subdivision	
	Rosedale – West Peterson	
	San Juan	

	Sunrise Estates	
	Table Butte (Greenwood)	
	Trout Valley	
	Viva Santa Ria Subdivision	
	Wagon Wheel Subdivision	
	Wind Canyon and Wind Canyon 2	
Medium Risk		10
	Buckhorn	
	Cliff	
	Cullum Estates Subdivision	
	Fort Bayard	
	Hachita Town Site	
	Loma Blanca and Loma Blanca 2	
	Riverside	
	Silver Acres – Quail Ridge – Ridge RD Mobile Home Park	
	Truck Bypass RD – American and Peaceful Valley Mobile Home Park	
	Tyrone Town Site	
Low Risk		0
Guadalupe County		9
High Risk		1
	Milargo	
Medium Risk		5
	Anton Chico	
	Colonias	
	Pastura	
	Pintada	
	Puerto de Luna	
Low Risk		3
	Newkirk - Cuervo	
	Santa Rosa	
	Vaughn	
Harding County		3
High Risk		0
Medium Risk		1
	Mosquero	
Low Risk		2
	Roy	
	Solano	
Hidalgo County		13
High Risk		1
	I-10 Corridor	
Medium Risk		6
	Big Hatchet Peak	

	Gila Neblett Valley	
	Gillespie Mountain	
	Rodeo Rancho Cielo	
	Steins	
	Viriden	
Low Risk		6
	Animas	
	Antelope Wells and Port of Entry	
	Cotton City	
	Playas	
	Rodeo	
	Shakespeare	
Lea County		8
High Risk		8
	Eunice	
	Hobbs	
	Jay	
	Knowles	
	Lovington	
	Maljamar	
	Monument	
	Tatum	
Medium Risk		0
Low Risk		0
Lincoln County		33
High Risk		27
	Alto	
	Ancho	
	Angus	
	Arabela	
	Bonito	
	Carrizo Canyon	
	Cedar Creek - Alpine Village	
	Copper Ridge	
	Copper Ridge 2	
	Corona	
	Eagle Creek	
	Eagle Creek 2	
	Enchanted Forest	
	Fawn Ridge	
	Gavilan Canyon	
	Glencoe	
	Lincoln	
	Loma Grande	
	Nogal	
	Outlaw	

	Ranches of Sonterra	
	Ruidoso	
	Ruidoso Downs	
	Sierra Vista	
	Sun Valley - Sierra Vista	
	Villa Madonna	
	White Oaks	
Medium Risk		3
	Hondo/Tinnie	
	Rainmakers	
	Ranches of Ruidoso	
Low Risk		3
	Capitan	
	Carrizozo	
	Fort Stanton	
Los Alamos County		2
High Risk		2
	Los Alamos	
	White Rock	
Medium Risk		0
Low Risk		0
Luna County		21
High Risk		6
	Highway 11	
	Highway 180 and Railroad	
	Highway 26	
	Highway 9 East	
	Highway 9 West	
	I-10 and Railroad	
Medium Risk		3
	Dairy Farms	
	International Border Fence	
	Sunshine (historical)	
Low Risk		12
	Chance City (historical)	
	Columbus	
	Cookes Peak	
	El Paso Natural Gas Monitoring Station	
	Florida Mountains	
	Florida Mountains Communication Site	
	Johnson Peak Communication Site	
	Nutt and Communication Site	
	Rattlesnake Lane	

	Savoy and El Paso Gas Plant	
	Victorio Peak Community Site	
	Red Mountain	
McKinley County		47
High Risk		13
	Black Rock	
	Bluewater Acres	
	Bluewater Lake - Homer C. Jones Subdivision	
	Cousins Trading Post	
	McGaffey	
	McGaffey Lake - Tampico Springs	
	Ramah	
	Ramah - Black Rock Corridor	
	Timberlake	
	Timberlake - Box S Ranch	
	Tse-Yah-Toh	
	Zuni Pueblo WUI - Black Rock	
	Zuni	
Medium Risk		18
	Black Rock - Vanderwagen Corridor	
	Chi Chil Tah	
	Fort Wingate	
	Iyanbito	
	Manuelito Area	
	Mariano Lake	
	Navajo	
	Navajo Estates (Yah-Ta-Hey–Tse Bonito Corridor)	
	Noble Acres	
	Pinehaven - Bread Springs	
	South Navajo - Highway 12 Corridor	
	Thoreau	
	Tohatchi	
	Tse Bonito	
	Vanderwagen - Sagar Estates	
	Whispering Cedars	
	Yah-ta-hey	
	Zuni Pueblo (Highway 53 Corridor)	
Low Risk		16
	Church Rock	
	Continental Divide (Thoreau Area)	
	Coyote Canyon	

	Crownpoint	
	Gallup	
	Gamerco – Twin Lakes Corridor	
	Mentmore Area	
	Nahodishgish	
	Nakaibito - Mexican Springs	
	Pinedale - Mariano Lake	
	Prewitt	
	Pueblo Pintado Area	
	Rehoboth	
	Rock Springs	
	San Mateo	
	Standing Rock	
Mora County		34
High Risk		14
	Canada Bonita	
	Christmas Tree Canyon	
	Cielo Vista	
	El Turquillo	
	Gascon	
	Guadalupita	
	Los Alamos	
	Los LeFebres Mesa	
	Lujan and Luna Canyon	
	Monte Aplanado	
	Rio de la Casa	
	Sierra Bonita - Rincon	
	Trumble Canyon Area	
Medium Risk	Vallecitos	12
	Abuelo	
	Buena Vista	
	Chacon	
	Cleveland	
	El Carmen	
	Holman	
	La Cueva	
	Ledoux	
	Los Huerros	
	Lucero	
	Mora	
	Puertocito	
Low Risk		8
	Golondrinas	
	Ocate	
	Ojo Feliz	

	Rainsville	
	Watrous	
	Wagon Mound	
	Optimo – Ciruela - Levy	
	Alamito	
Otero County		19
High Risk		17
	Bent	
	Burro Flats	
	Cloudcroft	
	Cox Canyon	
	Dry Canyon	
	Dungan VFD District	
	High Rolls – Mountain Park	
	James Canyon	
	La Luz	
	Mayhill	
	Mescalero	
	Sacramento	
	Sixteen Springs	
	Sunspot	
	Timberon	
	U.S. Highway 82 Corridor	
	Weed	
Medium Risk		2
	Alamogordo	
	Village of Tularosa	
Low Risk		0
Quay County		21
High Risk		6
	House	
	Logan	
	Pajarito	
	Plaza Largo	
	San Jon	
	Tucumcari	
Medium Risk		6
	Endee Truck Stop	
	Lesbia	
	Montoya	
	Nara Visa	
	Porter	
	Ute Lake Ranch	
Low Risk		9
	Bard	

	Endee	
	Forrest	
	Glenrio	
	Ima	
	Jordan	
	McAlister	
	Quay	
	Ute Lake State Park	
Rio Arriba County		91
High Risk		27
	Abiquiu	
	Alcalde	
	Ancones	
	Barranco	
	Biggs (historical)	
	Brazos Canyon	
	Buckman Road	
	Canones	
	Canones Creek	
	Cumbres & Toltec Scenic Railroad	
	Diamente (historical)	
	Dulce	
	El Guique	
	Estaca	
	Hernandez	
	Mesa de Poleo	
	La Canova	
	Las Tusas	
	Los Pinos	
	Los Silvestres	
	Lyden	
	Pinon Ridge	
	Ponderosa Estates	
	Rio Chama	
	San Juan Pueblo	
	Santa Clara Pueblo	
	Velarde	
Medium Risk		49
	Brazos	
	Canjilon	
	Canon	
	Canon Plaza	
	Cerrito de Baca	
	Chama	
	Chama West	

	Chamita	
	Chili	
	Cordova	
	Dixon	
	El Rito	
	El Vado	
	Espanola	
	Fairview	
	Gallina	
	Ghost Ranch	
	Guachupangue	
	Highland Estates	
	La Cueva	
	La Madera	
	La Mesilla	
	La Puente	
	La Zorra	
	Laguna Vista	
	Las Tablas	
	Llaves	
	Los Luceros	
	Lybrook	
	Medanales	
	Nutrias	
	Navajo City	
	Ojo Caliente	
	Ojo Sarco	
	Petaca	
	Placitas	
	Placita Garcia	
	Plaza Blanca	
	Rutheron	
	Santa California	
	San Pedro	
	Servilleta Plaza	
	Shadow Mountain	
	Tierra Amarilla	
	Tierra Azul	
	Tres Piedras	
	Truchas	
	Vallecitos	
	Youngsville	
Low Risk		15
	Abiquiu Lake Subdivision	
	Cebolla	
	Coyote	

	Embudo	
	Ensenada	
	Laguna Jacques	
	La Puente	
	Lindrith	
	Los Brazos	
	Los Ojos	
	Lumberton	
	Piedra Lumbre Estates	
	Rio Chama Estates	
	Rinconada	
	Tierra Amarilla	
Rio Arriba County/Santa Fe County		2
High Risk		0
Medium Risk		0
Low Risk		2
	Chimayo	
	Cordova	
Roosevelt County		11
High Risk		7
	Dora	
	Elida	
	Floyd	
	Kenna	
	Milnesand	
	Pep	
	Tolar	
Medium Risk		0
Low Risk		4
	Arch	
	Causey	
	Portales	
	Rogers	
San Juan County		13
High Risk		10
	Blanco	
	Bloomfield	
	Center Point - Cedar Hill	
	Farmington	
	Fruitland - Kirtland	
	Hart Valley	
	La Plata	
	Lee Acres	
	Sullivan Road	
	Water Flow	

Medium Risk		3
	Aztec	
	Flora Vista	
	Navajo Dam	
Low Risk		0
San Miguel County		34
High Risk		30
	Bernal – Tecolote - Lagunita	
	Bull Creek	
	Canoncito	
	Colonias (Upper/Lower)	
	Cowles	
	Dalton Canyon	
	El Porvenir	
	Gallinas	
	Gonzales Ranch	
	Grass Mountain	
	Hidden Valley	
	Highway 84	
	Las Vegas, North and West	
	Las Tusas	
	Lower Pecos Canyon	
	Mineral Hill	
	Montezuma	
	Pecos - East Pecos	
	Pecos River Valley	
	Pendaries Village	
	Rociada Valley	
	Romeroville - Ojitos Frios	
	San Ignacio – Las Tusas	
	Sapello - Tierra Monte	
	Tecolotito	
	Tererro - Tres Lagunas	
	Trujillo	
	Upper Gallinas	
	Villanueva - Pecos River Valley	
	Windsor Creek - Holy Ghost	
Medium Risk		4
	Conchas Lake	
	Las Vegas - Southeast	
	Sabinoso	
	Trementina - Variado	
Low Risk		0
Sandoval County		40
High Risk		23
	485 Corridor	

	Algodones	
	Areas 1, 2, 3 (Jemez Springs)	
	Canada	
	Canon	
	Chaparral Girl Scout Camp	
	Cochiti Mesa	
	Corrales	
	Deer Lake	
	Evergreen Hills Subdivision	
	Girl Scout Camp	
	Jemez Springs	
	La Cueva	
	La Madera	
	Placitas	
	Ponderosa North	
	Ponderosa South	
	Regina	
	Rio de Las Vacas	
	Seven Springs	
	Sierra de los Pinos	
	Taylor	
	Thompson Ridge	
Medium Risk		16
	126 Corridor	
	Angostura	
	Bernalillo	
	Budaghers	
	Cochiti Lake	
	Cochiti Pueblo	
	Cuba	
	Jemez Pueblo	
	La Jara	
	Pena Blanca	
	Puertecito	
	Rio Rancho	
	San Felipe Pueblo	
	Sile	
	Valle Grande	
	Zia Pueblo	
Low Risk		1
	San Ysidro	
Santa Fe County		42
High Risk		27
	Apache Ridge	
	Arroyo Hondo	
	Bella Vista	

	Bishops Lodge	
	Canada de los Alamos	
	Canoncito	
	Cedar Grove	
	Edgewood	
	El Dorado	
	Galisteo	
	Glorieta Pass	
	Hyde Park	
	La Barberia	
	La Cueva Canyon	
	La Jolla	
	Lamy	
	Los Cerrillos	
	Madrid	
	Mailbox Road	
	Ojo De La Vaca	
	Old Santa Fe Trail	
	Pacheco Canyon	
	San Marcos and Turquoise Trail	
	San Pedro	
	Tano Road	
	Thunder Mountain	
	Turquoise	
Medium Risk		14
	Arroyo Hondo	
	Chimayo	
	Chupadero	
	Cundiyo	
	La Cienega	
	La Tierra	
	Los Pinos	
	Nambe Pueblo	
	Pojoaque	
	Pojoaque Pueblo	
	San Ildefonso Pueblo	
	Sombrillo and Cuartelez	
	Tesuque	
	Tesuque Pueblo	
Low Risk		1
	Las Campanas	
Sierra County		25
High Risk		14
	Animas Creek	
	Arrey - Derry Bosque	
	Chiz	

	Chloride	
	Hermosa	
	Kingston	
	Lake Valley	
	Lake Valley Historic District	
	Mims Pond	
	Monticello	
	Placitas	
	Poverty Creek	
	Rio Grande Corridor - Palomas	
	Seco Subdivision	
Medium Risk		10
	Arrey - Derry	
	Caballo	
	Caballo Lake Lease Lots	
	Cuchillo	
	Elephant Butte	
	King Canyon	
	Oasis	
	Palomas	
	Truth or Consequences	
	Winston	
Low Risk		1
	Hillsboro	
Socorro County		17
High Risk		12
	Abeytas	
	Bernardo	
	Bosquecito	
	Hop Canyon	
	Jarales	
	La Joya	
	Mill Canyon	
	Pueblito	
	Sabinal	
	San Acacia	
	San Pedro	
	Veguita	
Medium Risk		5
	Lemitar	
	Magdalena	
	San Antonio	
	Socorro	
	Water Canyon	
Low Risk		0
Taos County		69

High Risk		22
	Apache Canyon	
	Cabresto Canyon	
	Carson	
	Deer Mesa	
	El Salto	
	Gallina Canyon	
	Kiowa Village	
	Lama	
	Pinabete Hills	
	Pot Creek	
	Questa	
	Shady Brook	
	Sipapu – Tres Ritos – Angostura	
	Taos Canyon - Rio Fernando	
	Taos Pueblo	
	Taos Ski Valley	
	Tierra Blanca	
	Town of Red River	
	Town of Taos	
	Turley Mill	
	Valle Escondido	
	Vallecitos	
Medium Risk		28
	Amalia	
	Arroyo Hondo	
	Arroyo Seco	
	Canon	
	Chamisal	
	Costilla	
	El Valle - Ojito	
	Las Trampas	
	Latir	
	Llano Llegua Road	
	Llano Quemado	
	Llano San Juan	
	Ojo Sarco	
	Penasco	
	Pilar	
	Red River	
	Rodarte - Llano Largo	
	San Cristobal	
	Santa Barbara	
	Talpa	
	Three Peaks	
	Tres Orejas	

	Tres Piedras	
	Two Peaks	
	Upper Red River Valley	
	Vadito	
	Valdez	
	Wiemer Heights	
Low Risk		19
	Cerro	
	Des Montes	
	El Prado	
	Los Cordovas	
	Lower Des Montes	
	Lower Rio Pueblo - Gold Course	
	Ojo Caliente	
	Picuris Pueblo	
	Placita	
	Ranchos De Taos	
	Rio Lucio	
	Rio Pueblo	
	Stagecoach	
	Star	
	Sunshine Valley	
	Taos	
	Taos Mesa	
	Ventero	
	Vista Linda	
Torrance County		27
High Risk		18
	A 102	
	Deer Canyon Preserve	
	Duran	
	Echo Hills (Loop)	
	Forest Road 422	
	Forest Valley Ranch	
	Fourth of July Campground	
	Game Road	
	Loma Parda	
	Manzano	
	Manzano Morning	
	McIntosh	
	Punta de Agua	
	Red Bluff	
	Sherwood Forest	
	Tajique	
	Torreon	
	Willard	

Medium Risk		8
	Clines Corners	
	Encino	
	Estancia	
	Mission Hills	
	Moriarty	
	Mountainair	
	Sunset Acres	
	Sweetwater Hills Subdivision	
Low Risk		1
	Homestead Estates	
Union County		12
High Risk		0
Medium Risk		2
	Capulin	
	Folsom	
Low Risk		10
	Amistad	
	Clayton	
	Des Moines	
	Gladstone	
	Grenville	
	Hayden	
	Mount Dora	
	Sedan	
	Strong City	
	Thomas	
Valencia County		18
High Risk		13
	Bosque Farms	
	Casa Colorado	
	City of Rio Communities	
	El Cerro Mission	
	Las Maravillas	
	Los Chavez	
	Los Lunas Bosque	
	Meadow Lake	
	Peralta	
	Salomon Estates	
	Tierra Grande	
	Tome	
	Valencia	
Medium Risk		0
Low Risk		5
	Belen	
	Highland Meadows	

	Jarales	
	Los Lunas	
	Southwest Mesa	

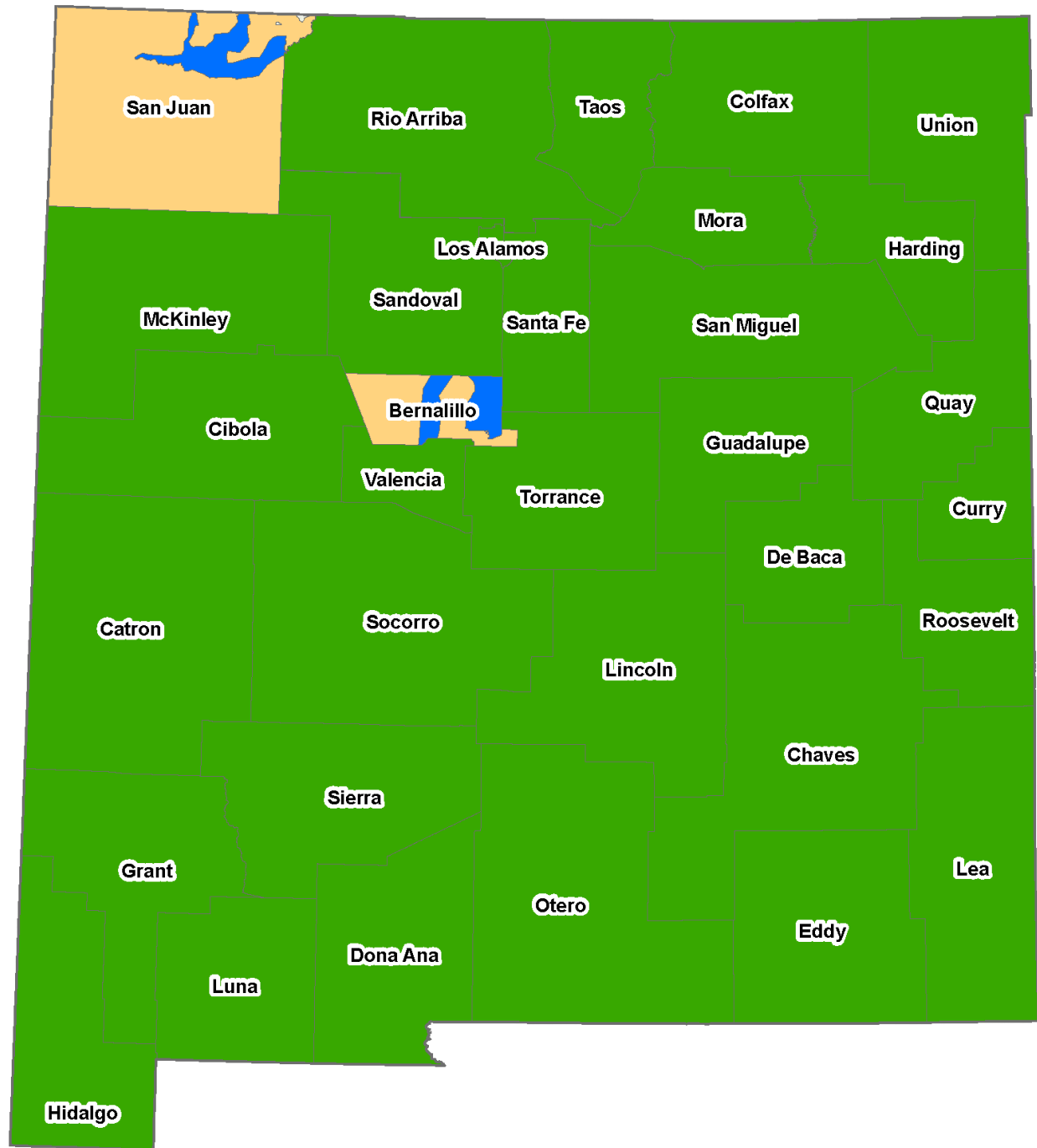
Total Count of 2025 Rating

High	405
Medium	290
Low	152

Total	847
--------------	------------



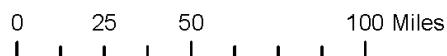
2021 New Mexico Community Wildfire Protection Plan Coverage



Cartographer: Randall Fowler
 Data Source: NMSF
 Coordinate System: NAD 1983 UTM
 Zone 13N
 Scale: 1:3,000,000
 Date: 11/12/2021

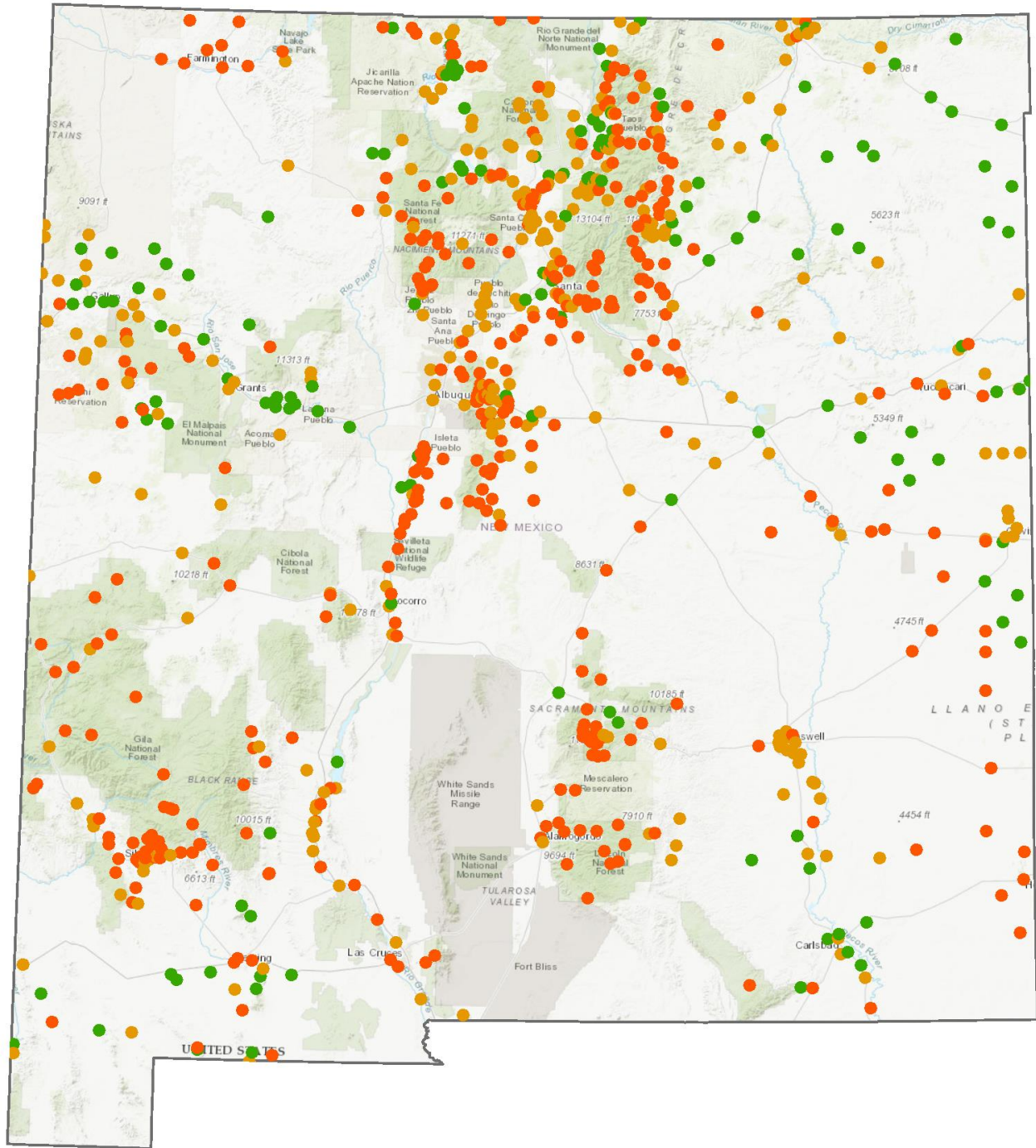
Status

- Complete
- In Progress
- Partial CWPP Coverage





New Mexico Communities at Risk (2021)

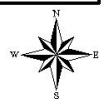


Cartographer: Randall Fowler
Data Source: NMSF
Coordinate System: NAD 1983 UTM
Zone 13N
Scale: 1:3,000,000
Date: 11/12/2021

Risk

- High
- Medium
- Low

0 25 50 100 Miles



Community Wildfire Protection Plan¹ Summary and Checklist Step One: Convene Decision Makers

- Form a core team made up of representatives from the appropriate local governments, local fire authority, and state agency responsible for forest management.

Step Two: Engage Interested Parties

- Contact and encourage active involvement in plan development from a broad range of interested organizations and stakeholders.
- Identify and engage local representatives of the USFS and BLM.
- Contact and involve other land management agencies as appropriate.

Step Three: Establish a Community Base Map

- Work with partners to establish a baseline map of the community that defines the community's WUI and displays inhabited areas at risk, forested areas that contain critical human infrastructure, and forest areas at risk for large-scale fire disturbance.

Step Four: Identify Problems to Be Addressed

- Work with partners to identify problems to be addressed, including fuel hazards; risk of wildfire occurrence; structural ignitability; local preparedness capability; and location of homes, businesses, essential infrastructure, and other community values at risk.
- This "community risk assessment" can be simple or complex depending on the resources available to the community and partners.

Step Five: Establish Community Priorities and Recommendations

- Use the base map and community risk assessment to facilitate a collaborative community discussion that leads to the identification of local priorities for fuel treatment, reducing structural ignitability, and improving fire response capability.
- Clearly indicate whether priority projects are directly related to protection of communities and essential infrastructure or to reducing wildfire risks to other community values.

Step Six: Develop an Action Plan and Assessment Strategy

- Consider developing a detailed implementation strategy to accompany the CWPP, as well as a monitoring plan that will ensure its long-term success.

Step Seven: Complete the Community Wildfire Protection Plan

- Consider the CWPP complete for the year and date stamp the document.
- Communicate the results to the community and partners.
- Collect information to update the plan for revision the following year.

¹ This checklist was adapted from the publication “Preparing a Community Wildfire Protection Plan: A handbook for Wildland-Urban Interface Communities” that can be downloaded from <https://www.iafc.org>. The checklist was modified by the New Mexico Fire Planning Task Force for use in New Mexico.

APPENDIX 2

REFERENCE LIST

[Wildland/Urban Interface Fire Hazard Assessment Methodology](#). NWCG. (undated).

[A Collaborative Approach for Reducing Wildland Fire Risks to Communities and the Environment](#). 10-Year Comprehensive Strategy Implementation Plan. May 2002.

[FIELD GUIDANCE Identifying and Prioritizing Communities at Risk](#). National Association of State Foresters. June 2003.

[Preparing a Community Wildfire Protection Plan, A handbook for Wildland-Urban Interface Communities](#). Society of American Foresters. March 2004.