

# 2022 COMMUNITIES AT RISK ASSESSMENT PLAN

64 CWPPs Completed - Identifying 878 Communities at Risk



Photo: Big Hole Fire April 2022, Edward James Gonzalez

Prepared by the Energy, Minerals and Natural Resources Department (EMNRD), Forestry Division:

Laura McCarthy, State Forester

Vernon Muller, Resource Protection Bureau Chief

Randall Fowler, Data Analyst

Rachael Foe, Program Coordinator

---

## TABLE OF CONTENTS

Executive Summary	3
2022 Accomplishments	5
Table 1 – Completed Community Wildfire Protection Plans	6
Table 2 – List of Communities at Risk	9
Maps 1 – CWPP Coverage	25
Maps 2 – CWPP Risk Rating	26
Appendix 1 – Community Wildfire Protection Plan Checklist	27
Appendix 2 – Reference List	28

## EXECUTIVE SUMMARY

The 2003 New Mexico Legislature created the New Mexico Fire Planning Task Force (NM-FPTF) to identify the state's Wildland Urban Interface (WUI) areas most vulnerable to wildland fires and develop standards for building codes and ordinances to reduce the threat of wildland fires to those communities.

---

### WUI CODES

The NM-FPTF adheres to the International Code Council's Wildland Urban Interface Code. New Mexico counties and communities are encouraged to adopt these codes and ordinances to further reduce the threat of wildland fires to their communities.

---

### CWPP

The NM-FPTF reviews new or updated Community Wildfire Protection Plans (CWPPs) each year and approves those that meet all criteria set forth by the Healthy Forest Restoration Act. Completed and approved CWPPs are placed within the Programs and Services section of the Forestry Division's website, <https://www.emnrd.nm.gov/sfd/>.

Each CWPP contains a list of the communities at risk from wildfire. These are compiled to create the New Mexico Communities at Risk list (see Table 2). Communities are added or deleted, and ratings may be changed, with the development of a new CWPP or with the revision of an older CWPP. The NM-FPTF publishes all updates and revisions to the list and provides a final report to the Governor and New Mexico Legislature by December 15th of each year.

The communities listed annually in this publication replace the January 2001 Federal Register listing for communities at risk. The information will be forwarded to federal cooperators for their use and will reside on the EMNRD, Forestry Division's website <https://www.emnrd.nm.gov/sfd>

### History (CPZ to CWPP)

In 2003, the state was divided into 18 Community Protection Zones (CPZ). Inside these zones were 234 communities that were evaluated for their wildland fire risk. Using standard hazard risk rating methodology, these communities were rated as high, medium, or low risk. Since then, the communities have been encouraged to develop a CWPP. All communities initially identified in the CPZs have since been reevaluated in the formation of their CWPP and most counties revising o updating their CWPP have added communities within their jurisdiction.

### Value of a CWPP

A CWPP should identify areas that need vegetative fuels removed to reduce wildfire risk and severity, suggest methods to reduce structural ignitability, and evaluate a community's firefighting capacity. This planning process helps unite communities by identifying their risk to wildfire, their community values, and their critical infrastructure. Factored together, these concerns should produce a prioritized list of vulnerable areas to be treated, as well as the potential treatment options.

The CWPPs provide communities with opportunities to influence where and how federal agencies implement fuel reduction projects on federal lands, and the distribution of federal funds for projects on non-federal lands. Many funding options and grants require a jurisdiction to be included in a current and approved CWPP. This is especially relevant in 2022 as the USDA launched the \$1 billion Community Wildfire Defense Grant (CWDG) program, funded by the Infrastructure Investment and Jobs Act of 2021. Communities can apply for grants to update their CWPPs (up to \$250,000) or to implement projects provided the projects are specifically identified within their CWPP (up to \$10 million). This funding prioritizes communities that have high wildfire hazard potential, have been impacted by severe disasters, or are low income. Many New Mexico communities are eligible for to compete for the \$200 million federal funding allocated annually in FY22-FY26.

The communities listed within a CWPP are not a complete list of areas at risk from wildland fire. Each county or community preparing a CWPP has made a concerted effort to list all the communities or neighborhoods within their plan's boundaries. The Communities at Risk Subcommittee recognizes that some communities in New Mexico are not recommended by the county to be listed in a CWPP. The NM-FPTF encourages all counties and communities within New Mexico to be in a CWPP.

#### How do I get started?

A CWPP can take a variety of forms based on the publication "Preparing a Community Wildfire Protection Plan: A Handbook for Wildland-Urban Interface Communities", available at <https://www.eforester.org/>. Communities are encouraged to contact their local Forestry Division district office for assistance when developing or revising a CWPP and for information on Wildland Urban Interface Codes and fuel hazard reduction programs.

## 2022 ACCOMPLISHMENTS

The NM-FPTF updated and adopted five CWPPs and one CWPP addendum (Rio Arriba County) for an updated project list. The 2022 totals are 64 CWPPs for New Mexico (see Table 1 for a list of plans). The NM-FPTF agrees that all CWPPs should be updated within five years of their adoption by the NM-FPTF. The requirements for updating a CWPP can be found on the Forestry Division website and District Foresters disseminate the requirements within their region.

These 64 CWPPs identify 878 communities at risk from wildland fire. Of the 878 communities, 432 are listed as high risk, 291 are listed as medium risk, and 155 are listed as low risk from wildland fire (see Table 2).

Requests for fuel reduction projects to address wildfire threats to communities continue to exceed the available funding. The United States Department of Agriculture (USDA), Forest Service (USFS) has made funds available for these treatments through the National Fire Plan and the CWDG program. The United States Department of the Interior, Bureau of Land Management (BLM), through an agreement with New Mexico Counties (NMC), has funded both hazardous fuels treatments as well as public outreach and education projects across the state. Local community groups with state and federal partners continue to develop CWPPs, identify fuel hazard reduction projects, and treat acres across the state.

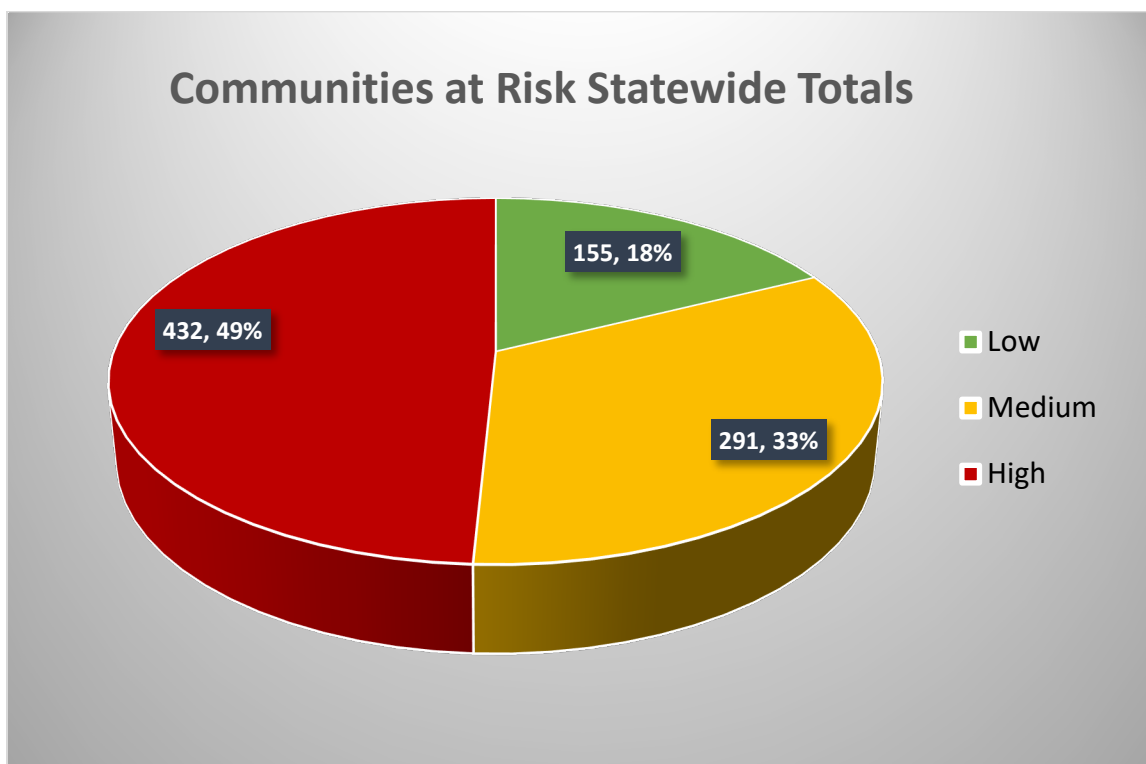


TABLE 1

## COMPLETED COMMUNITY WILDFIRE PROTECTION PLANS 2022

CWPP Name	Year of Completion
<b>Bernalillo County</b> East Mountains* Middle Rio Grande Conservancy District*	<b>2022</b> 2015 2007
<b>Catron County</b> Apache Creek Datil Davenport Horse Mountain Jewett Gap Luna Mogollon Pie Town Reserve Wild Horse Willow Creek	<b>2005/2015</b> 2007 2006 2007 2006 2005 2007 2006 2006 2007 2007 2006
<b>Chaves County</b>	<b>2010/2014</b>
<b>Cibola County</b> Candy Kitchen	<b>2006/2020</b> 2006
<b>Colfax County</b> Cimarron Watershed Alliance Elk Ridge Enchanted Circle Taos Pines Hidden Lake Ute Park Village of Angel Fire	<b>2008/2022</b> 2008 2006/2022 2006 2016 2006 2006 2009/2017/2022
<b>Curry County</b>	<b>2008/2017</b>
<b>De Baca County</b>	<b>2008</b>

<b>Dona Ana County</b>	<b>2012</b>
<b>Eddy County</b>	<b>2008</b>
<b>Grant County</b>	<b>2010/2015/2020</b>
<b>Guadalupe County</b>	<b>2008</b>
<b>Harding County</b>	<b>2008</b>
<b>Hidalgo County</b>	<b>2009</b>
<b>Lea County</b>	<b>2008</b>
<b>Lincoln County</b> Claunch Pinto Ruidoso Area	<b>2008/2014/2019</b> 2016 2004/2015
<b>Los Alamos County</b>	<b>2009/2017/2022</b>
<b>Luna County</b>	<b>2010</b>
<b>McKinley County</b>	<b>2008/2013/2018</b>
<b>Mora County</b>	<b>2005/2019</b>
<b>Otero County</b>	<b>2004/2014/2020</b>
<b>Quay County</b>	<b>2008</b>
<b>Rio Arriba County</b> Upper Rio Chama	<b>2007/2017</b> 2008
<b>Roosevelt County</b>	<b>2008</b>
<b>Sandoval County</b>	<b>2008</b>
<b>San Juan Basin</b>	<b>2006/2014/2021</b>
<b>San Miguel County</b>	<b>2008/2019</b>
<b>Santa Clara Pueblo</b>	<b>2007</b>
<b>Santa Fe County</b>	<b>2008/2015/2020</b>
<b>Sierra County</b>	<b>2005/2012/2019</b>

<b>Socorro County</b>	<b>2006</b>
<b>Taos County</b> Gallina Canyon/San Cristobal Peñasco Questa Taos Canyon Taos Ski Valley	<b>2009/2017/2022</b> 2021 2012/2018 2008 2021 2017
<b>Taos Pueblo</b>	<b>2009</b>
<b>Torrance County</b>	<b>2008/2017</b>
<b>Union County</b>	<b>2008</b>
<b>Valencia County</b>	<b>2012/2018</b>

Community Wildfire Protection Plans may be viewed at <https://www.emnrd.nm.gov/sfd/>.



TABLE 2

**Communities at Risk List 2022**

Table 2 lists all the communities accounted for in New Mexico's CWPPs. Bernalillo County updated its CWPP in 2022 and communities that were listed in prior CWPPs within Bernalillo County (East Mountains and Middle Rio Grande Conservancy District) are noted with an asterix (\*).

## Community Risk Ratings - 2022 Update

County	High Risk Communities	Moderate Risk Communities	Low Risk Communities
<b>Bernalillo</b> (60)	Cañoncito* Canyon Estates* Carnuel Casa Loma* Cedar Crest Cedar* Cedro Chilili Diamon Mesa Downtown Albuquerque Dennis Chavez Estates* El Refugio* El Tablazon* Embudo Canyon/Supper Five Points Forest Park* Glenwood Hills/Kachina Isleta Pueblo Juan Tomas La Luz La Madera Ladera Los Pinos* North Valley/Los Ranchos de Albuquerque Paa-ko Estates Ponderosa* Ponderosa Pine* Primera Agua* Rincon* River Front Estates/West Bluff Sandia Knolls* Sandia Park/San Antonio Sedillo North	Alley Place* Barton* Escabosa* Isleta Pueblo Resort and Casino Forest historical* Miera* North Albuquerque Acres/Nor Estate Pajarito Mesa Portrait Park Row One North/Valle Grande Sandia Heights/Mountain Highlands Volcano Cliffs Zamora*	Atrisco Vista North Double Eagle Airport

	Sedillo South		
	Sierra Vista		
	South Valley		
	South Valley West		
	Tablazon		
	Tijeras		
	Valle de Oro		
	Vantana Ranch		
	West Old Town		
	Winterwood Park/Juan Tabo Hills		
	Yrisarri East		
	Yrisarri West		
	<b>Total</b>	<b>45</b>	<b>13</b>
			<b>2</b>

County	High Risk Communities	Moderate Risk Communities	Low Risk Communities
Catron (18)	Apache Creek	Coyote Creek	
	Aragon	Cruzville	
	Datil Area	Glenwood	
	Davenport	Horse Mountain	
	Elk Springs	Pie Town	
	Jewett Gap	Wild Horse	
	Luna		
	Mogollon		
	Quemado Lake Estates		
	Rancho Grande Estates		
	Reserve		
	Willow Creek		
	<b>Total</b>	<b>6</b>	<b>0</b>

County	High Risk Communities	Moderate Risk Communities	Low Risk Communities
<b>Chaves (23)</b>	Lake Arthur Penasco Valley Roswell, Northeast Tierra Grande	County Club Dexter District 8 Dunken Dunken/Penasco School East Grand Plains Hagerman Lake Van Midway Penasco 1 FD Penasco 2 FD Rio Felix FD Roswell, East Roswell, Northeast Roswell, Northwest Roswell, South Roswell, Southwest Roswell, West South Spring Acres	
<b>Total</b>	<b>4</b>	<b>19</b>	<b>0</b>

County	High Risk Communities	Moderate Risk Communities	Low Risk Communities
<b>Cibola (38)</b>	Bluewater Acres Candy Kitchen Cibola Trails La Jara Lobo Canyon-Cantina Acres Oso Ridge Pinehill San Mateo Timberlake	Acoma Pueblo Bibo-Cebolletita-Moquino Bluewater Cloh Chin Toh El Morro Ranches Fence Lake Grants McGaffey Pines Pine Meadows San Rafael Seboyeta Techado	Acomita-North Acomita Cubero El Morro James Valley-Tierra Verde Laguna McCartys Mesita-El Rito Milan Mountain View Nicoll Ojo Caliente Paguete Paraje-Casa Blanca San Fidel Seama-Philadelphia-Harrisburg Skyline-Ganipa Toltec
<b>Total</b>	<b>9</b>	<b>12</b>	<b>17</b>

County	High Risk Communities	Moderate Risk Communities	Low Risk Communities
Colfax (35)	Angel Fire Black Lake/Lake Black Resort Elk Ridge Hidden Lake Idyllwild Lakeview Pines Taos Pines Ute Park	Agua Fria Bartlett Carisbrooke Cimarron Colfax Gardiner Linwood Miami Philmont Headquarters Pine Forest Estates Raton Rayado Springer Sugarite Sugarite Canyon State Park Vermejo Park Ranch Headquarters Whittington Center Yankee	Abbott Eagle Nest Elizabethtown Maxwell Farley NM Boys School Taylor Springs Tinaja
<b>Total</b>	<b>8</b>	<b>18</b>	<b>8</b>

County	High Risk Communities	Moderate Risk Communities	Low Risk Communities
Curry (11)	Melrose	Bellview Broadview Clovis Grady Hachita Hills Jack Rabbit Run Sun Ridge Estates Turquoise Estates Van Acres	Clovis Industrial Park
<b>Total</b>	<b>1</b>	<b>9</b>	<b>1</b>

County	High Risk Communities	Moderate Risk Communities	Low Risk Communities
De Baca (6)	Lake Sumner Sunnyside (Old Town) Taiban Yeso	Fort Sumner Valley	
<b>Total</b>	<b>4</b>	<b>2</b>	<b>0</b>

County	High Risk Communities	Moderate Risk Communities	Low Risk Communities
<b>Dona Ana</b> (11)	Dripping Springs Fairacres Garfield Las Alturas (Talavera) Mesilla Radium Springs Rincon	Chaparral Dona Ana Hatch Vado-La Mesa	
<b>Total</b>	<b>7</b>	<b>4</b>	<b>0</b>

County	High Risk Communities	Moderate Risk Communities	Low Risk Communities
<b>Eddy (17)</b>	Queen Whites City	Artesia Carlsbad Joel Loco Hills Malaga Riverside	Atoka Carlsbad Caverns Cottonwood Happy Valley Hope La Huerta Loving Otis Waste Isolation Pilot Plant (WIPP)
<b>Total</b>	<b>2</b>	<b>6</b>	<b>9</b>

County	High Risk Communities	Moderate Risk Communities	Low Risk Communities
<b>Grant (47)</b>	Chisholm Ranch Subdivision Cleveland Mine Road/Pinos Mountain Copper Ridge Subdivision Cottage San Road East Peterson/West Racetrack East Racetrack/Santa Clara Faywood Feeley Subdivision Flying A Subdivision Gila Gila Hot Springs/Gila Cliff Dwellings Hanover/Fierro/Santa Rita District Indian Hills Subdivision Lake Roberts Lake Roberts Heights LS Mesa Area Mangus Springs Mangus Terrace/Bellwood & Genson Mobile Home Parks	Buckhorn Cliff Cullum Estates Subdivision Fort Bayard Hachita Town Site Loma Blanca and Loma Blanca 2 Riverside Silver Acres, Quail Ridge, Ridge RD Mobile Park American & Peaceful Valley Mobile Home Park Tyrone Town Site	

	Mimbres Hot Springs Ranch Mule Creek North Swan and Dos Griegos Oakwood Estates & Estates 2 Old Arenas Valley Road Owens Road Paradise Acres 1 Paradise Acres 2 Pine Cienega Pinos Altos River Glen Subdivision Rosedale/West Peterson San Juan Sunrise Estates Table Butte (Greenwood) Trout Valley Viva Santa Rita Subdivision Wagon Wheel Subdivision Wind Canyon 2 and Wind Canyon		
<b>Total</b>	<b>37</b>	<b>10</b>	<b>0</b>

County	High Risk Communities	Moderate Risk Communities	Low Risk Communities
Guadalupe (9)	Milagro	Anton Chico Colonias Pastura Pintada Puerto de Luna	Newkirk/Cuervo Santa Rosa Vaughn
<b>Total</b>	<b>1</b>	<b>5</b>	<b>3</b>

County	High Risk Communities	Moderate Risk Communities	Low Risk Communities
Harding (3)		Mosquero	Roy Solano
<b>Total</b>	<b>0</b>	<b>1</b>	<b>2</b>

County	High Risk Communities	Moderate Risk Communities	Low Risk Communities
Hidalgo (13)	I-10 Corridor	Big Hatchet Gila Neblett Valley Gillespie Mountain Rodeo Rancho Cielo Steins Virden	Animas Antelope Wells & Porte of Entry Cotton City Playas Rodeo Shakespeare
<b>Total</b>	<b>1</b>	<b>6</b>	<b>6</b>

County	High Risk Communities	Moderate Risk Communities	Low Risk Communities
Lea (8)	Eunice Hobbs Jay Knowles Lovington Maljamar Monument Tatum		
<b>Total</b>	<b>8</b>	<b>0</b>	<b>0</b>

County	High Risk Communities	Moderate Risk Communities	Low Risk Communities
Lincoln (33)	Alto Ancho Angus Arabela Bonito Carrizo Canyon Cedar Creek-Alpine Village Copper Ridge Copper Ridge 2 Corona Eagle Creek Eagle Creek 2 Enchanted Forest Fawn Ridge Gavilan Canyon Glencoe Lincoln Loma Grande Nogal Outlaw Ranches of Sonterra Ruidoso Ruidoso Downs Sierra Vista Sun Valley-Sierra Vista Villa Madonna White Oaks Hondo/Tinnie Rainmakers Ranches of Ruidoso	Hondo/Tinnie Rainmakers Ranches of Ruidoso	Capitan Carrizozo Fort Stanton
<b>Total</b>	<b>30</b>	<b>3</b>	<b>3</b>

County	High Risk Communities	Moderate Risk Communities	Low Risk Communities
<b>Los Alamos</b> (2)	Los Alamos White Rock		
<b>Total</b>	<b>2</b>	<b>0</b>	<b>0</b>

County	High Risk Communities	Moderate Risk Communities	Low Risk Communities
<b>Luna (21)</b>	Highway 11 Highway 180 and Railroad Highway 26 Highway 9 East Highway 9 West I-10 and Railroad	Dairy Farms International Border Fence Sunshine (historical)	Chance City (historical) Columbus Cookes Peak El Paso Natural Gas Monitoring Station Florida Mountains Florida Mountains Comm. Site Johnson Peak Communication Site Nutt and Communication Site Rattlesnake Lane Red Mountain Savoy and El Paso Gas Plant Victorio Peak Community Site
<b>Total</b>	<b>6</b>	<b>3</b>	<b>12</b>

County	High Risk Communities	Moderate Risk Communities	Low Risk Communities
<b>McKinley</b> (47)	Black Rock Bluewater Acres Bluewater Lake/Homer Jones Subdivision Cousin Trading Post McGaffey McGaffey Lake-Tampico Springs Ramah Ramah-Black Rock Corridor Timberlake Timberlake-Box S Ranch Tse-Yah-Tow Zuni Pueblo WUI-Black Rock Zuni	Zuni Pueblo (Hwy 53 Corridor) Chi Chil Tah Fort Wingate Iyanbito Manuelito Area Mariano Lake Navajo Navajo Estates Noble Acers Pinchaven-Bread Springs South Navajo-Hwy 12 Corridor Thoreau Tohatchi Tse Bonito Vanderwagen-Sagar Estates Whispering Cedars Yah-ta-hey	Church Rock Continental Divide (Thoreau Area) Coyote Canyon Crownpoint Gallup Gamerco-Twin Lakes Corridor Mentmore Area Nahodishgish Nakaibito-Mexican Springs Pinedale-Mariano Lake Prewitt Pueblo Pintado Area Rock Springs San Mateo Standing Rock Rehoboth
<b>Total</b>	<b>13</b>	<b>17</b>	<b>16</b>



County	High Risk Communities	Moderate Risk Communities	Low Risk Communities
<b>Mora (34)</b>	Canada Bonita Christmas Tree Canyon Cielo Vista El Turquillo Gascon Guadalupita Los Alamos Los LeFebres Mesa Lujan and Luna Canyon Monte Aplanado Rio de la Casa Sierra Bonita/Rincon Trumble Canyon Area Vallecitos	Abuelo Buena Vista Chacon Cleveland El Carmen Holman La Cueva Ledoux Los Huerros Lucero Mora Puertocito	Golondrinas Ocate Ojo Feliz Rainsville Watrous Wagon Mound Optimo, Ciruela, Levy Alamito
<b>Total</b>	<b>14</b>	<b>12</b>	<b>8</b>

County	High Risk Communities	Moderate Risk Communities	Low Risk Communities
<b>Otero (19)</b>	Bent Burro Flats Cloudcroft Cox Canyon Dry Canyon Dungan VFD District High Rolls/Mountain Park James Canyon La Luz Mayhill Mescalero Sacramento Sixteen Springs Sunspot Timberon U.S Highway 82 Corridor Weed	Alamogordo Village of Tularosa	
<b>Total</b>	<b>17</b>	<b>2</b>	<b>0</b>

County	High Risk Communities	Moderate Risk Communities	Low Risk Communities
Quay (21)	House Logan Pajarito Plaza Largo San Jon Tucumcari	Endee Truck Stop Lesbia Montoya Nara Visa Porter Ute Lake Ranch	Bard Endee Forrest Glenrio Ima Jordan McAlister Quay Ute Lake State Park
<b>Total</b>	<b>6</b>	<b>6</b>	<b>9</b>

County	High Risk Communities	Moderate Risk Communities	Low Risk Communities
Rio Arriba (91)	Abiquiu Alcalde Ancones Barranco Biggs (Historical) Brazos Canyon Buckman Road Canones Canones Creek Cumbres & Toltec Scenic Railroad Diamanté (Historical) Dulce El Guique Estaca Hernandez Mesa de Poleo La Canova Las Tusas Los Pinos Los Silvestres Lyden Pinon Ridge Ponderosa Estates Rio Chama San Juan Pueblo Santa Clara Pueblo Velarde	Brazos Canjilon Canon Canon Plaza Cerrito de Baca Chama Chama West Chamita Chili Cordova Dixon El Rito El Vado Espanola Fairview Gallina Ghost Ranch Guachupangue Highland Estates La Cueva La Madera La Mesilla La Puente La Zorra Laguna Vista Las Tablas Llaves Los Luceros Lybrook Medanales	Abiquiu Lake Subdivision Cebolla Coyote Embudo Ensenada Laguna Jacques La Puente Lindrith Los Brazos Los Ojos Lumberton Piedra Lumber Estates Rio Chama Estates Rinconada Tierra Amarilla

		Nutrias Navajo City Ojo Caliente Ojo Sarco Petaca Placitas Placita Garcia Plaza Blanco Rutherford Santa California San Pedro Servilleta Plaza Shadow Mountain Tierra Amarilla Tierra Azul Tres Piedras Truchas Vallecitos Youngsville	
<b>Total</b>	<b>28</b>	<b>49</b>	<b>15</b>

County	High Risk Communities	Moderate Risk Communities	Low Risk Communities
Rio Arriba/Santa Fe (2)			Cordova Chimayo
<b>Total</b>	<b>0</b>	<b>0</b>	<b>2</b>

County	High Risk Communities	Moderate Risk Communities	Low Risk Communities
Roosevelt (11)	Dora Floyd Elida Kenna Milnesand Pep Tolar		Arch Causey Portales Rogers
<b>Total</b>	<b>7</b>	<b>0</b>	<b>4</b>

County	High Risk Communities	Moderate Risk Communities	Low Risk Communities
San Juan (13)	Blanco Bloomfield Center Point-Cedar Hill Farmington Fruitland-Kirtland	Aztec Flora Vista Navajo Dam	

	Hart Valley La Plata Lee Acres Sullivan Road Water Flow		
<b>Total</b>	<b>10</b>	<b>3</b>	<b>0</b>

County	High Risk Communities	Moderate Risk Communities	Low Risk Communities
San Miguel (34)	Bernal/Tecolote/Lagunita Bull Creek Cañoncito Colonias (Upper/Lower) Cowles Dalton Canyon El Porvenir Gallinas Gonzales Ranch Grass Mountain Hidden Valley Highway 84 Las Vegas, North & West Las Tusas Lower Pecos Canyon Mineral Hill Montezuma Pecos/East Pecos Pecos River Valley Pendaries Village Rociada Valley Romeroville/Ojitos Frios San Ignacio/Las Tusas Sapello/Tierra Monte Tecolotito Tererro/Tres Lagunas Trujillo Upper Gallinas Villanueva/Pecos River Valley Windsor Creek/Holy Ghost Conchas Lake Las Vegas, Southeast Trementina-Variado Sabinoso	Conchas Lake Las Vegas, Southeast Trementina-Variado Sabinoso	
<b>Total</b>	<b>30</b>	<b>4</b>	<b>0</b>

County	High Risk Communities	Moderate Risk Communities	Low Risk Communities
<b>Sandoval</b> (40)	485 Corridor Algodones Areas 1, 2, 3 (Jemez Springs) Canada Canon Chaparral Girl Scout Camp Cochiti Mesa Corrales Deer Lake Evergreen Hills Subdivision Girls Scout Camp Jemez Springs La Cueva La Madera Placitas Ponderosa North Ponderosa South Regina Rio de Las Vacas Seven Springs Sierra de los Pinos Taylor Thompson Ridge	126 Corridor Angostura Bernalillo Budaghers Cochiti Lake Cochiti Pueblo Cuba Jemez Pueblo La Jara Pena Blanca Puertecito Rio Rancho San Felipe Pueblo Sile Valle Grande Zia Pueblo	San Ysidro
<b>Total</b>	<b>23</b>	<b>16</b>	<b>1</b>

County	High Risk Communities	Moderate Risk Communities	Low Risk Communities
<b>Santa Fe</b> (42)	Edgewood San Pedro Cedar Grove Bella Vista Thunder Mountain Madrid Mail Box RD Galisteo Los Cerrillos Turquoise San Marcos & Turquoise Trail El Dorado Lamy Cañoncito Old Santa Fe Trail Arroyo Hondo Ojo de la Vaca Apache Ridge La Barbara	Pojoaque Sombrillo and Cuartelez Chimayo Cundiyo Tesuque Chupadero La Tierra La Cienega Los Pinos Arroyo Hondo Nambe Pueblo Tesuque Pueblo San Ildefonso Pueblo Pojoaque Pueblo	Las Campanas

	Canada de los Alamos Glorieta Pass La Cueva Canyon La Jolla Bishops Lodge Hide Park Pacheco Canyon Tano RD		
<b>Total</b>	<b>27</b>	<b>14</b>	<b>1</b>

County	High Risk Communities	Moderate Risk Communities	Low Risk Communities
Sierra (25)	Animas Creek Arrey/Derry Bosque Chiz Chloride Hermosa Kingston Lake Valley Lake Valley Historic District Mims Pond Monticello Placita Poverty Creek Rio Grande Corridor-Palomas Seco Subdivision	Arrey/Derry Caballo Caballo Lake Lease Lots Cuchillo Elephant Butte King Canyon Oasis Palomas Truth or Consequences Winston	Hillsboro
<b>Total</b>	<b>14</b>	<b>10</b>	<b>1</b>

County	High Risk Communities	Moderate Risk Communities	Low Risk Communities
Socorro (17)	Abeytas Bernardo Bosquecito Hop Canyon Jarales La Joya Mill Canyon Pueblito Sabinal San Acacia San Pedro Veguita	Lemitar Magdalena San Antonio Socorro Water Canyon	
<b>Total</b>	<b>12</b>	<b>5</b>	<b>0</b>

County	High Risk Communities	Moderate Risk Communities	Low Risk Communities
<b>Taos (69)</b>	Apache Canyon Cabresto Canyon Cañon Heights Deer Mesa El Salto El Valle Gallina Canyon Lama Latir/El Rito Pinabete Hills Pot Creek Shady Brook Sipapu Taos Canyon/Rio Fernando Village of Taos Ski Valley Three Peaks Tierra Blanca Town of Taos Two Peaks Turley Mill Upper Red River Valley Valle Escondido Vallecitos	Amalia Arroyo Hondo Arroyo Seco Canon Carson Cerro Chamisal Costilla Las Trampas Llano Largo Llano Llegua RD Llano Quemado Llano San Juan Ojo Caliente Placita Questa San Cristobal Santa Barbara Talpa Taos Pueblo Town of Red River Tres Piedras Tres Orejas Vadito Valdez Wiemer Heights	Des Montes El Prado Los Cordovas Lower Des Montes Lower Rio Pueblo/Gold Course Penasco Picuris Pueblo Pilar Ranchos De Taos Rio Lucio Rio Pueblo Rodarte Stagecoach Star Sunshine Valley Taos Taos Mesa Ventero Vista Linda
<b>Total</b>	<b>23</b>	<b>26</b>	<b>19</b>

County	High Risk Communities	Moderate Risk Communities	Low Risk Communities
<b>Torrance (27)</b>	A 102 Deer Canyon Preserve Duran Echo Hills (Loop) Forest Road 442 Forest Valley Ranch Fourth of July Campground Game Road Loma Parada Manzano Manzano Morning McIntosh Punta de Agua	Clines Corners Encino Estancia Mission Hills Moriarty Mountainair Sunset Acres Sweetwater Hills Subdivision	Homestead Estates

	Red Bluff Sherwood Forest Tajique Torreon Willard		
<b>Total</b>	<b>18</b>	<b>8</b>	<b>1</b>

County	High Risk Communities	Moderate Risk Communities	Low Risk Communities
<b>Union (12)</b>		Capulin Folsom	Amistad Clayton Des Moines Gladstone Grenville Hayden Mount Dora Sedan Strong City Thomas
<b>Total</b>	<b>0</b>	<b>2</b>	<b>10</b>

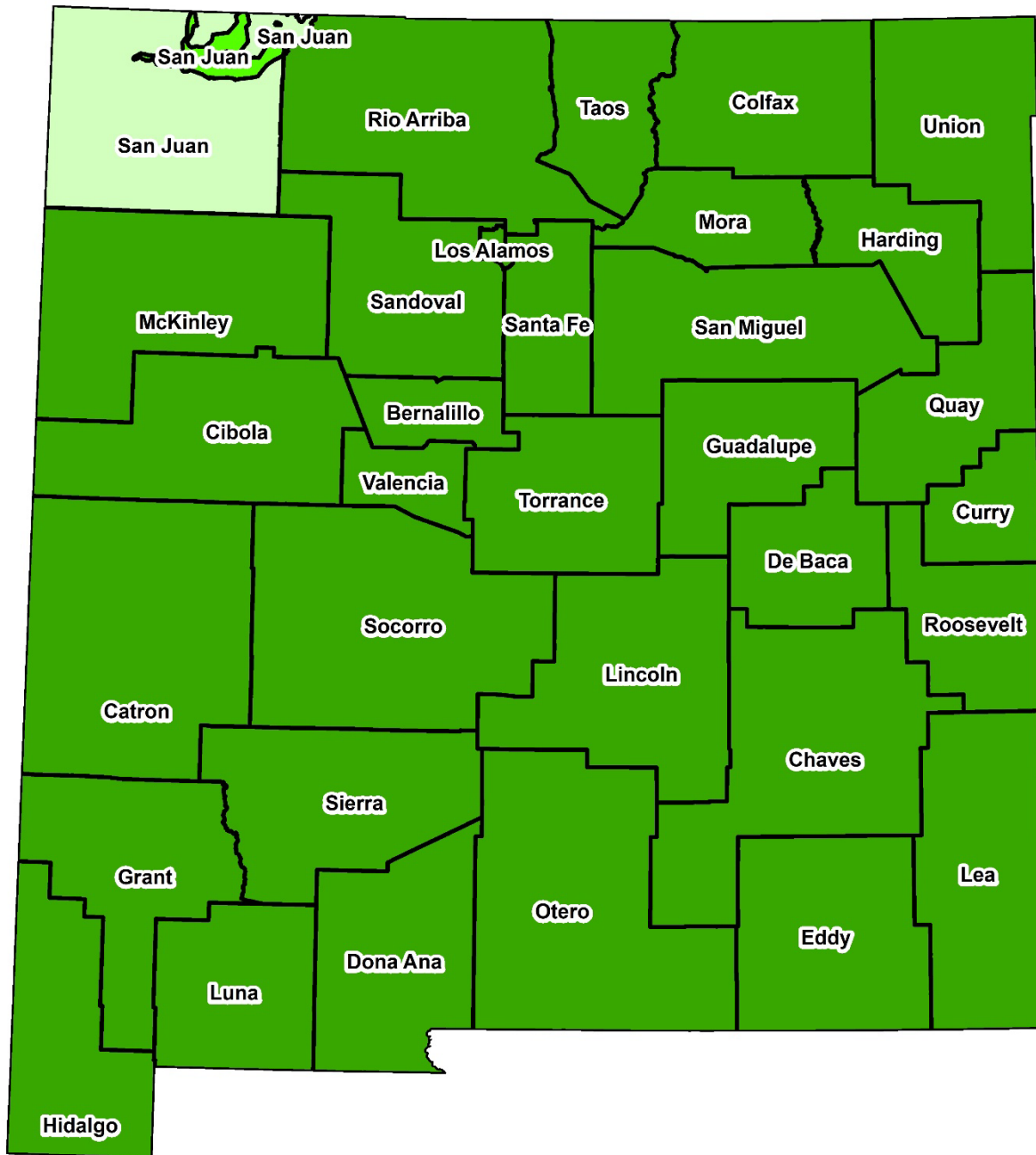
County	High Risk Communities	Moderate Risk Communities	Low Risk Communities
<b>Valencia (18)</b>	Bosque Farms Casa Colorado City of Rio Communities El Cerro Mission Las Maravillas Los Chavez Los Lunas Bosque Meadow Lake Peralta Salomon Estates Tierra Grande Tome Valencia		Belen Highland Meadows Jarales Los Lunas Southwest Mesa
<b>Total</b>	<b>13</b>	<b>0</b>	<b>5</b>

<b>TOTALS</b>	<b>432</b>	<b>291</b>	<b>155</b>
---------------	------------	------------	------------





# 2022 New Mexico Community Wildfire Protection Plan Coverage



Cartographer: Randall Fowler  
Data Source: NMFD  
Coordinate System: NAD 1983 UTM  
Zone: 13N  
Scale: 1:3,000,000  
Date: 11/29/2022

## Status

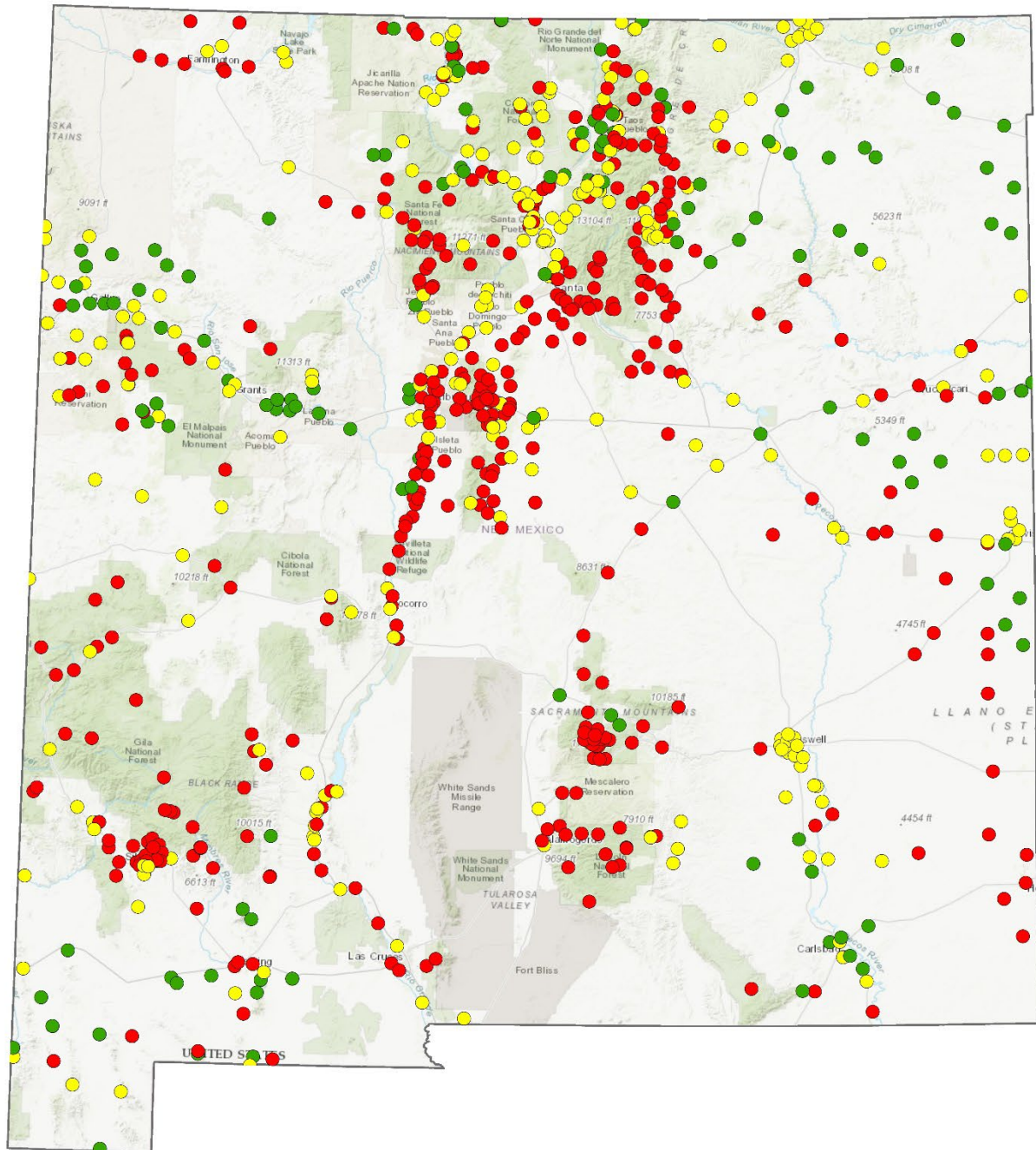
- Complete
- Partial
- In Progress

0 25 50 100 Miles





# New Mexico Communities at Risk (2022)

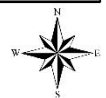


Cartographer: Randall Fowler  
Data Source: NMFD  
Coordinate System: NAD 1983 UTM  
Zone 13N  
Scale: 1:3,000,000  
Date: 11/28/2022

## 2022 Rating

- High
- Medium
- Low

0 25 50 100 Miles



## APPENDIX 1

### **Community Wildfire Protection Plan<sup>1</sup> Summary and Checklist Step One: Convene Decision Makers**

- Form a core team made up of representatives from the appropriate local governments, local fire authority, and state agency responsible for forest management.

#### **Step Two: Engage Interested Parties**

- Contact and encourage active involvement in plan development from a broad range of interested organizations and stakeholders.
- Identify and engage local representatives of the USFS and BLM.
- Contact and involve other land management agencies as appropriate.

#### **Step Three: Establish a Community Base Map**

- Work with partners to establish a baseline map of the community that defines the community's WUI and displays inhabited areas at risk, forested areas that contain critical human infrastructure, and forest areas at risk for large-scale fire disturbance.

#### **Step Four: Identify Problems to Be Addressed**

- Work with partners to identify problems to be addressed, including fuel hazards; risk of wildfire occurrence; structural ignitability; local preparedness capability; and location of homes, businesses, essential infrastructure, and other community values at risk.
- This "community risk assessment" can be simple or complex depending on the resources available to the community and partners.

#### **Step Five: Establish Community Priorities and Recommendations**

- Use the base map and community risk assessment to facilitate a collaborative community discussion that leads to the identification of local priorities for fuel treatment, reducing structural ignitability, and improving fire response capability.
- Clearly indicate whether priority projects are directly related to protection of communities and essential infrastructure or to reducing wildfire risks to other community values.

#### **Step Six: Develop an Action Plan and Assessment Strategy**

- Consider developing a detailed implementation strategy to accompany the CWPP, as well as a monitoring plan that will ensure its long-term success.

#### **Step Seven: Complete the Community Wildfire Protection Plan**

- Consider the CWPP complete for the year and date stamp the document.
- Communicate the results to the community and partners.
- Collect information to update the plan for revision the following year.

---

<sup>1</sup> This checklist was adapted from the publication "Preparing a Community Wildfire Protection Plan: A handbook for Wildland-Urban Interface

Communities” that can be downloaded from <https://www.iafc.org>. The checklist was modified by the New Mexico Fire Planning Task Force for use in New Mexico.

## APPENDIX 2

### REFERENCE LIST

[\*Wildland/Urban Interface Fire Hazard Assessment Methodology\*](#). NWCG. (undated).

[\*A Collaborative Approach for Reducing Wildland Fire Risks to Communities and the Environment\*](#). 10-Year Comprehensive Strategy Implementation Plan. May 2002.

[\*FIELD GUIDANCE Identifying and Prioritizing Communities at Risk\*](#). National Association of State Foresters. June 2003.

[\*Preparing a Community Wildfire Protection Plan, A handbook for Wildland-Urban Interface Communities\*](#). Society of American Foresters. March 2004.

[\*Biden-Harris Administration announces \\$1 Billion in Community Wildfire Defense Grants from Bipartisan Infrastructure Law\*](#). USDA July 2022.