

Energy, Minerals and Natural
Resources Department



Forestry Division

2025

COMMUNITIES AT RISK ASSESSMENT PLAN

33 Counties with CWPP / 33 Community-Specific CWPP Completed



Photo: Desert Willow Complex 2025, Kevin Pacheco

Prepared by the Energy, Minerals and Natural Resources Department (EMNRD), Forestry Division:

Laura McCarthy, State Forester; Vernon Muller, Resource Protection Bureau Chief; Randall Fowler, Data Analyst; Abigail Plecki, Program Manager; George Ducker, Communications Manager

TABLE OF CONTENTS

Executive Summary	3
2025 Community Wildfire Protection Plan (CWPP) Updates	5
Table 1 – Completed Community Wildfire Protection Plans	6
Table 2 – List of Communities at Risk	10
Maps 1 – CWPP Coverage 2025	27
Maps 2 – Community Mitigation Mapping	28
Appendix 1 – Community Wildfire Protection Plan Checklist	29
Appendix 2 – Reference List	30
Appendix 3 – 2025 Fire Planning Task Force Meeting Minutes	31

EXECUTIVE SUMMARY

In 2003 the New Mexico Legislature created the Fire Planning Task Force (Task Force) to identify the state's Wildland Urban Interface (WUI) areas most vulnerable to wildland fires and to develop standards for building codes and ordinances to reduce the threat of wildland fires to those communities.

WILDFIRE PREPARED ACT AND HOME HARDENING STANDARDS

The statute creating the New Mexico Fire Planning Task Force was updated by the legislature in 2025 through the Wildfire Prepared Act [62-2A-1 et seq. NMSA 1978]. The original statute was passed in 2003, and the 2025 amendment added members to the Task Force and revised the duties to include developing wildfire prepared standards and guidelines and requirements for eligibility for grants provided through the wildfire prepared program.

The 2025 legislature also appropriated \$10 million to the Office of Superintendent of Insurance “to the New Mexico fair access to insurance requirements program for mitigation, property insurance needs, programs and initiatives statewide for expenditure in fiscal year 2026.” As a result of this demonstrated financial commitment to home hardening in New Mexico, the Insurance Institute for Business and Home Safety (IBHS) launched their Wildfire Prepared Home program in New Mexico. This program was created to mitigate home loss from wildfire by recommending standards for protection of structures and the surrounding property and making it easier for properties that comply with the standards to obtain insurance. IBHS is a research-directed non-profit that partners with the national insurance industry with the overarching goal of reducing insurance claims from wildfire, hail, flood and wind through preventative measures. New Mexico is the fourth state to partner with IBHS and their Wildfire Prepared program, joining California, Oregon and Nevada.

In November, the Task Force voted to adopt IBHS's Wildfire Prepared standards – branded under the Wildfire Prepared Homes and Wildfire Prepared Homes Plus programs – as voluntary standards for home hardening and mitigation in New Mexico. The home hardening and mitigation standards, along with additional information about the program can be viewed at <https://wildfireprepared.org>. See the attached minutes from this year's Task Force meetings in Appendix 3.

The Forestry Division also created a new map system to identify the placement of and priority need for community buffer areas using the IBHS Wildfire Prepared Neighborhood Standards. This mapping was developed to guide implementation of the Forest and Watershed Buffer Projects Act [68-4-2 et seq. NMSA 1978] and will be useful for future updates to Community Wildfire Protection Plans (CWPP). The Community Mitigation Map represents [neighborhood flame and ember zones](#) and provides an overview of communities statewide at greatest risk from wildfire, and the general location in those communities that risk can be mitigated by creating and enhancing buffer areas. Information from this map can help guide treatment and mitigation plans as well as future CWPP updates from communities and counties. See page 28 for an illustration of this map or visit: <https://www.emnrd.nm.gov/sfd/fire-prevention-programs/community-mitigation-maps>.

CWPP

The Task Force reviews new or updated Community Wildfire Protection Plans (CWPP) each year and approves those that meet all criteria set forth in guidelines developed by the Task Force. Completed and approved CWPPs are posted on the Energy, Minerals and Natural Resources Department website at <https://www.emnrd.nm.gov/sfd/fire-prevention-programs/community-wildfire-protection-plans-cwpp>.

Each CWPP contains a list of the communities at risk from wildfire. These are compiled to create the New Mexico Communities at Risk list provided in Table 2. Communities are added or deleted and ratings may be changed with the development of a new CWPP or with the revision of an older CWPP. The risk rating is determined using a systematic process to identify and assess conditions that could lead to undesirable spread of wildfire in communities. The risk assessments measure vegetation and fuel conditions, fire protection capability, structural vulnerability, infrastructure vulnerability, and values to be protected. The Task Force publishes all updates and revisions to the list and provides a final report to the Governor and Legislature by December 15th of each year.

The communities listed annually in this publication replace the January 2001 Federal Register listing for communities at risk. The information will be forwarded to federal agencies in the United States Department of Agriculture (USDA) and Department of the Interior (DOI) for their use and will be posted on the Energy, Minerals and Natural Resources Department website at <https://www.emnrd.nm.gov/sfd>.

History (CPZ to CWPP)

The Task Force has modified the definitions and guidelines for assessing wildfire risk to communities several times since its inception in 2003. Initially the state was divided into 18 Community Protection Zones (CPZ). Inside these zones were 234 communities that were evaluated for their wildland fire risk. Using standard hazard risk rating methodology, these communities were rated as high, medium or low risk.

With passage of federal legislation and funding for CWPPs, the task force adjusted its definitions and guidelines. For more than a decade the Task Force has encouraged communities to develop CWPPs. All communities initially identified in the CPZs have since been reevaluated and incorporated into a county-wide CWPP and some communities have opted to develop a more detailed, locally specific CWPP.

Value of a CWPP

A CWPP should identify areas that need vegetation that will act as fuel for wildfire to be removed or managed to reduce wildfire risk and severity, suggest methods to reduce structural ignitability, and evaluate a community's firefighting capacity. This planning process helps unite communities by identifying their risk to wildfire and engaging people in a process to articulate their community values and identify critical infrastructure and possible post-fire threats. Factored together, these concerns are considered to produce a prioritized list of vulnerable areas for wildfire mitigation, including areas for

hazardous fuels reduction and the potential treatment options.

The CWPPs provide communities with opportunities to influence where and how federal agencies implement fuel reduction projects on federal lands and the allocation of federal funds for projects on non-federal lands. Many funding options and grants require a jurisdiction to be included in current and approved CWPP. This is still especially relevant in 2025 as the USDA continues to implement their \$1 billion Community Wildfire Defense Grant (CWDG) program, funded by the Infrastructure Investment and Jobs Act. Communities can apply for grants to update their CWPPs (up to \$250,000) or to implement projects provided the projects are specifically identified within their CWPP (up to \$10 million). This funding prioritizes communities that have high wildfire hazard potential, have been impacted by severe disasters, or are low income. Many New Mexico communities are eligible for funding, and to date nearly \$65 million is awarded to CWPP updates and projects in our state.

The communities listed within CWPP are not a complete list of areas at risk from wildland fire. Each county or community preparing a CWPP has made a concerted effort to list all the communities or neighborhoods within their plan's boundaries. The Task Force's Communities at Risk Subcommittee recognizes that some communities in New Mexico are not recommended by the county to be listed in a CWPP. However, the Task Force does encourage all counties and communities within New Mexico to be in a CWPP.

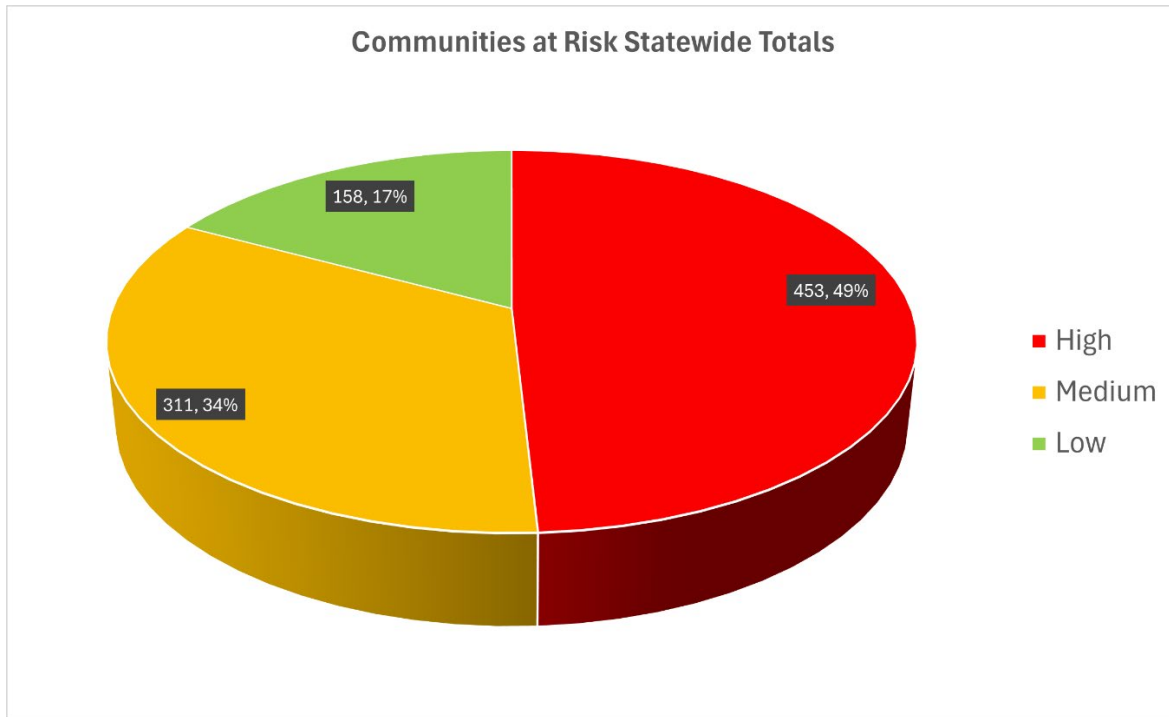
How does a County or Community get started?

A CWPP can take a variety of forms based on the publication "Preparing a Community Wildfire Protection Plan: A Handbook for Wildland-Urban Interface Communities," available at <https://fireadapted.org>. Communities are encouraged to contact their local Forestry Division District Office for assistance when developing or revising a CWPP and for information on Wildland Urban Interface Codes and fuel hazard reduction programs.

2025 CWPP UPDATES

The Task Force updated and adopted three CWPPs in 2025 at the fall meeting. The 2025 totals are 66 CWPPs for New Mexico (see Table 1 for a list of plans), including one CWPP for each county and 33 additional locally specific CWPPs. The Task Force agrees that all CWPPs should be updated within five years of their adoption. The requirements for updating CWPPs can be found on the Forestry Division website and Division personnel in each District disseminate the requirements to counties, communities and fire departments within their region.

The 66 CWPPs identify 922 communities at risk from wildland fire. Of the 922 communities, 453 are listed as high risk, 311 are listed as medium risk, and 158 are listed as low risk from wildland fire (see Table 2). The increased number of communities at risk, from 919 communities in 2024 to 922 communities in 2025, is because the updated CWPP are more granular in the identification of community risks and project opportunities.



Requests for fuel reduction projects to address wildfire threats to communities continue to exceed the available funding. The USDA Forest Service has made funds available for these treatments through the CWDG program and a suite of programs through the Cooperative Forestry Assistance Act and Farm Bill. The Bureau of Land Management (BLM) within the DOI has an agreement with New Mexico Counties (NMC) to fund both hazardous fuels treatments and public outreach and education projects across the state. Local community groups with state and federal partners continue to develop CWPPs, identify hazardous fuel reduction projects and treat acres in high-risk areas.

TABLE 1

COMPLETED COMMUNITY WILDFIRE PROTECTION PLANS 2025

CWPP Name	Year of Completion
Bernalillo County	2022
East Mountains	2015
Middle Rio Grande Conservancy District	2007

Catron County Apache Creek Datil Davenport Horse Mountain Jewett Gap Luna Mogollon Pie Town Reserve Wild Horse Willow Creek	2005/2015 2007 2006 2007 2006 2005 2007 2006 2006 2007 2007 2006
Chaves County	2010/2014
Cibola County Candy Kitchen	2006/2020 2006
Colfax County Cimarron Watershed Alliance Elk Ridge Enchanted Circle Taos Pines Hidden Lake Ute Park Village of Angel Fire	2008/2022 2008 2006/2022 2006 2016 2006 2006 2009/2017/2022
Curry County	2008/2017
De Baca County	2008
Dona Ana County	2012
Eddy County	2025
Grant County	2010/2015/2020
Guadalupe County	2008
Harding County	2008
Hidalgo County	2009

Lea County	2008
Lincoln County Claunch Pinto Ruidoso Area	2008/2014/2019 2016 2004/2015
Los Alamos County	2009/2017/2022
Luna County	2010
McKinley County	2008/2013/2018
Mora County	2005/2019
Otero County	2004/2014/2020
Quay County	2008
Rio Arriba County Dixon Upper Rio Chama	2007/2017/2024 2023 2008
Roosevelt County	2008
Sandoval County	2025
San Juan Basin	2006/2014/2021
San Miguel County	2008/2019
Santa Clara Pueblo	2007
Santa Fe County Eldorado	2008/2015/2020 2025
Sierra County	2005/2012/2019
Socorro County Claunch Pinto	2018 2016/2024
Taos County Gallina Canyon/San Cristobal Peñasco Questa Taos Canyon Taos Ski Valley	2009/2017/2022 2021 2012/2018 2008 2021 2017
Taos Pueblo	2009

Torrance County Claunch Pinto	2008/2017/2024 2016/2024
Union County	2008
Valencia County	2012/2018

Community Wildfire Protection Plans may be viewed at <https://www.emnrd.nm.gov/sfd/fire-prevention-programs/community-wildfire-protection-plans-cwpp>.

TABLE 2

Communities at Risk List 2025

Table 2 lists all the communities accounted for in New Mexico's CWPPs.

Community Risk Ratings - 2025 Update

County	High Risk Communities	Moderate Risk Communities	Low Risk Communities
Bernalillo (60)	Cañoncito Canyon Estates Carnuel Casa Loma Cedar Crest Cedar Cedro Chilili Diamon Mesa Downtown Albuquerque Dennis Chavez Estates El Refugio El Tablazon Embudo Canyon/Supper Five Points Forest Park Glenwood Hills/Kachina Isleta Pueblo Juan Tomas La Luz La Madera Ladera Los Pinos North Valley/Los Ranchos de Albuquerque Paa-ko Estates Ponderosa Ponderosa Pine Primera Agua Rincon River Front Estates/West Bluff Sandia Knolls Sandia Park/San Antonio Sedillo North Sedillo South Sierra Vista South Valley	Alley Place Barton Escabosa Isleta Pueblo Resort and Casino Forest historical Miera North Albuquerque Acres/Nor Estate Pajarito Mesa Portrait Park Row One North/Valle Grande Sandia Heights/Mountain Highlands Volcano Cliffs Zamora	Atrisco Vista North Double Eagle Airport

	South Valley West Tablazon Tijeras Valle de Oro Vantana Ranch West Old Town Winterwood Park/Juan Tabo Hills Yrisarri East Yrisarri West		
Total	45	13	2

County	High Risk Communities	Moderate Risk Communities	Low Risk Communities
Catron (18)	Apache Creek Aragon Datil Area Davenport Elk Springs Jewett Gap Luna Mogollon Quemado Lake Estates Rancho Grande Estates Reserve Willow Creek	Coyote Creek Cruzville Glenwood Horse Mountain Pie Town Wild Horse	
Total	12	6	0

County	High Risk Communities	Moderate Risk Communities	Low Risk Communities
Chaves (23)	Lake Arthur Penasco Valley Roswell, Northeast Tierra Grande	County Club Dexter District 8 Dunken Dunken/Penasco School East Grand Plains Hagerman Lake Van Midway Penasco 1 FD Penasco 2 FD Rio Felix FD Roswell, East Roswell, Northeast Roswell, Northwest Roswell, South Roswell, Southwest Roswell, West South Spring Acres	
Total	4	19	0

County	High Risk Communities	Moderate Risk Communities	Low Risk Communities
Cibola (38)	Bluewater Acres Candy Kitchen Cibola Trails La Jara Lobo Canyon-Cantina Acres Oso Ridge Pinehill San Mateo Timberlake	Acoma Pueblo Bibo-Cebolletita-Moquino Bluewater Cloh Chin Toh El Morro Ranches Fence Lake Grants McGaffey Pines Pine Meadows San Rafael Seboyeta Techado	Acomita-North Acomita Cubero El Morro James Valley-Tierra Verde Laguna McCartys Mesita-El Rito Milan Mountain View Nicoll Ojo Caliente Paguete Paraje-Casa Blanca San Fidel Seama-Philadelphia-Harrisburg Skyline-Ganipa Toltec
Total	9	12	17

County	High Risk Communities	Moderate Risk Communities	Low Risk Communities
Colfax (35)	Angel Fire Black Lake/Lake Black Resort Elk Ridge Hidden Lake Idyllwild Lakeview Pines Sugarite Canyon State Park Taos Pines Ute Park	Agua Fria Bartlett Carisbrooke Cimarron Colfax Gardiner Linwood Miami Philmont Headquarters Pine Forest Estates Raton Rayado Springer Sugarite Sugarite Canyon State Park Vermejo Park Ranch Headquarters Whittington Center Yankee	Abbott Eagle Nest Elizabethtown Maxwell Farley NM Boys School Taylor Springs Tinaja
Total	9	18	8

County	High Risk Communities	Moderate Risk Communities	Low Risk Communities
Curry (11)	Melrose	Bellview Broadview Clovis Grady Hachita Hills Jack Rabbit Run Sun Ridge Estates Turquoise Estates Van Acres	Clovis Industrial Park
Total	1	9	1

County	High Risk Communities	Moderate Risk Communities	Low Risk Communities
De Baca (6)	Lake Sumner Sunnyside (Old Town) Taiban Yeso	Fort Sumner Valley	
Total	4	2	0

County	High Risk Communities	Moderate Risk Communities	Low Risk Communities
Dona Ana (11)	Dripping Springs Fairacres Garfield Las Alturas (Talavera) Mesilla Radium Springs Rincon	Chaparral Dona Ana Hatch Vado-La Mesa	
Total	7	4	0

County	High Risk Communities	Moderate Risk Communities	Low Risk Communities
Eddy (17)	Queen	Artesia Carlsbad Joel Riverside Whites City	Atoka Carlsbad Caverns Cottonwood Happy Valley Hope La Huerta Loco Hills Loving Malaga Otis Waste Isolation Pilot Plant
Total	1	5	11

County	High Risk Communities	Moderate Risk Communities	Low Risk Communities
Grant (47)	Chisholm Ranch Subdivision Cleveland Mine Road/Pinos Mountain Copper Ridge Subdivision Cottage San Road East Peterson/West Racetrack East Racetrack/Santa Clara Faywood Feeley Subdivision Flying A Subdivision Gila Gila Hot Springs/Gila Cliff Dwellings Hanover/Fierro/Santa Rita District Indian Hills Subdivision Lake Roberts Lake Roberts Heights LS Mesa Area Mangus Springs	Buckhorn Cliff Cullum Estates Subdivision Fort Bayard Hachita Town Site Loma Blanca and Loma Blanca 2 Riverside Silver Acres, Quail Ridge, Ridge RD Mobile Park American & Peaceful Valley Mobile Home Park Tyrone Town Site	

	Mangus Terrace/Bellwood & Genson Mobile Home Parks Mimbres Hot Springs Ranch Mule Creek North Swan and Dos Griegos Oakwood Estates & Estates 2 Old Arenas Valley Road Owens Road Paradise Acres 1 Paradise Acres 2 Pine Cienega Pinos Altos River Glen Subdivision Rosedale/West Peterson San Juan Sunrise Estates Table Butte (Greenwood) Trout Valley Viva Santa Rita Subdivision Wagon Wheel Subdivision Wind Canyon 2 and Wind Canyon		
Total	37	10	0

County	High Risk Communities	Moderate Risk Communities	Low Risk Communities
Guadalupe (9)	Milagro	Anton Chico Colonias Pastura Pintada Puerto de Luna	Newkirk/Cuervo Santa Rosa Vaughn
Total	1	5	3

County	High Risk Communities	Moderate Risk Communities	Low Risk Communities
Harding (3)		Mosquero	Roy Solano
Total	0	1	2

County	High Risk Communities	Moderate Risk Communities	Low Risk Communities
Hidalgo (13)	I-10 Corridor	Big Hatchet Gila Neblett Valley Gillespie Mountain Rodeo Rancho Cielo Steins Viriden	Animas Antelope Wells & Porte of Entry Cotton City Playas Rodeo Shakespeare

Total	1	6	6
County	High Risk Communities	Moderate Risk Communities	Low Risk Communities
Lea (8)	Eunice Hobbs Jay Knowles Lovington Maljamar Monument Tatum		
Total	8	0	0

County	High Risk Communities	Moderate Risk Communities	Low Risk Communities
Lincoln (33)	Alto Ancho Angus Arabela Bonito Carrizo Canyon Cedar Creek-Alpine Village Copper Ridge Copper Ridge 2 Corona Eagle Creek Eagle Creek 2 Enchanted Forest Fawn Ridge Gavilan Canyon Glencoe Lincoln Loma Grande Nogal Outlaw Ranches of Sonterra Ruidoso Ruidoso Downs Sierra Vista Sun Valley-Sierra Vista Villa Madonna White Oaks Hondo/Tinnie Rainmakers Ranches of Ruidoso	Hondo/Tinnie Rainmakers Ranches of Ruidoso	Capitan Carrizozo Fort Stanton
Total	30	3	3

County	High Risk Communities	Moderate Risk Communities	Low Risk Communities
Los Alamos (2)	Los Alamos White Rock		
Total	2	0	0

County	High Risk Communities	Moderate Risk Communities	Low Risk Communities
Luna (21)	Highway 11 Highway 180 and Railroad Highway 26 Highway 9 East Highway 9 West I-10 and Railroad	Dairy Farms International Border Fence Sunshine (historical)	Chance City (historical) Columbus Cookes Peak El Paso Natural Gas Monitoring Station Florida Mountains Florida Mountains Comm. Site Johnson Peak Communication Site Nutt and Communication Site Rattlesnake Lane Red Mountain Savoy and El Paso Gas Plant Victorio Peak Community Site
Total	6	3	12

County	High Risk Communities	Moderate Risk Communities	Low Risk Communities
McKinley (47)	Black Rock Bluewater Acres Bluewater Lake/Homer Jones Subdivision Cousin Trading Post McGaffey McGaffey Lake-Tampico Springs Ramah Ramah-Black Rock Corridor Timberlake Timberlake-Box S Ranch Tse-Yah-Tow Zuni Pueblo WUI-Black Rock Zuni	Zuni Pueblo (Hwy 53 Corridor) Chi Chil Tah Fort Wingate Iyanbito Manuelito Area Mariano Lake Navajo Navajo Estates Noble Acers Pinchaven-Bread Springs South Navajo-Hwy 12 Corridor Thoreau Tohatchi Tse Bonito Vanderwagen-Sagar Estates Whispering Cedars Yah-ta-hey	Church Rock Continental Divide (Thoreau Area) Coyote Canyon Crownpoint Gallup Gamerco-Twin Lakes Corridor Mentmore Area Nahodishgish Nakaibito-Mexican Springs Pinedale-Mariano Lake Prewitt Pueblo Pintado Area Rock Springs San Mateo Standing Rock Rehoboth
Total	13	17	16

County	High Risk Communities	Moderate Risk Communities	Low Risk Communities
Mora (34)	Canada Bonita Christmas Tree Canyon Cielo Vista El Turquillo Gascon Guadalupita Los Alamos Los LeFebres Mesa Lujan and Luna Canyon Monte Aplanado Rio de la Casa Sierra Bonita/Rincon Trumble Canyon Area Vallecitos	Abuelo Buena Vista Chacon Cleveland El Carmen Holman La Cueva Ledoux Los Huerros Lucero Mora Puertocito	Golondrinas Ocate Ojo Feliz Rainsville Watrous Wagon Mound Optimo, Ciruela, Levy Alamito
Total	14	12	8

County	High Risk Communities	Moderate Risk Communities	Low Risk Communities
Otero (19)	Bent Burro Flats Cloudcroft Cox Canyon Dry Canyon Dungan VFD District High Rolls/Mountain Park James Canyon La Luz Mayhill Mescalero Sacramento Sixteen Springs Sunspot Timberon U.S Highway 82 Corridor Weed	Alamogordo Village of Tularosa	
Total	17	2	0

County	High Risk Communities	Moderate Risk Communities	Low Risk Communities
Quay (21)	House Logan Pajarito Plaza Largo San Jon Tucumcari	Endee Truck Stop Lesbia Montoya Nara Visa Porter Ute Lake Ranch	Bard Endee Forrest Glenrio Ima Jordan McAlister Quay Ute Lake State Park
Total	6	6	9

County	High Risk Communities	Moderate Risk Communities	Low Risk Communities
Rio Arriba (112)	Abiquiu Alcalde Ancones Apodaca Barranco Brazos Canyon Buckman Road Canoncito Canones Creek Dixon Dixon CR 65/24 Dixon Village Dulce El Guique Estaca Fort Heron Preserve Hernandez Mesa de Poleo La Canova La Cienega La Junta Las Tusas Los Pinos Los Silvestres Lyden Park View Hills Pinon Ridge Ponderosa Estates Rio Chama San Juan Pueblo	Brazos Biggs (Historical) Canada de Lorenzo Canjilon Canon Canon Plaza Cerrito de Baca Chama Chama West Chimayo Cordova Diamanté (Historical) Dixon Arroyo de la Mina Dixon Arroyo Pino El Rito Embudo El Vado Espanola Fairview Gallina Ghost Ranch Guachupangue Highland Estates La Bolsa La Cueva La Madera La Mesilla La Puente La Zorra Laguna Vista	Abiquiu Lake Subdivision Cebolla Cebolla Coyote Embudo Ensenada Laguna Jacques La Puente Lindrith Los Ojos Lumberton Piedra Lumber Estates Rio Chama Estates Tierra Amarilla

	San Pedro Santa Clara Pueblo Velarde	Las Tablas Llaves Los Luceros Lybrook Medanales Nutrias Navajo City Ojo Caliente Ojo Sarco Petaca Placitas Placita Garcia Plaza Blanco Rinconada Rutherford Santa California Servilleta Plaza Shadow Mountain Tierra Amarilla Tierra Azul Tres Piedras Truchas Vallecitos Youngsville	
Total	38	59	13

County	High Risk Communities	Moderate Risk Communities	Low Risk Communities
Rio Arriba/Santa Fe (2)			Cordova Chimayo
Total	0	0	2

County	High Risk Communities	Moderate Risk Communities	Low Risk Communities
Roosevelt (11)	Dora Floyd Elida Kenna Milnesand Pep Tolar		Arch Causey Portales Rogers
Total	7	0	4

County	High Risk Communities	Moderate Risk Communities	Low Risk Communities
San Juan (13)	Blanco Bloomfield Center Point-Cedar Hill Farmington Fruitland-Kirtland Hart Valley La Plata Lee Acres Sullivan Road Water Flow	Aztec Flora Vista Navajo Dam	
Total	10	3	0

County	High Risk Communities	Moderate Risk Communities	Low Risk Communities
San Miguel (34)	Bernal/Tecolote/Lagunita Bull Creek Cañoncito Colonias (Upper/Lower) Cowles Dalton Canyon El Porvenir Gallinas Gonzales Ranch Grass Mountain Hidden Valley Highway 84 Las Vegas, North & West Las Tusas Lower Pecos Canyon Mineral Hill Montezuma Pecos/East Pecos Pecos River Valley Pendaries Village Rociada Valley Romeroville/Ojitos Frios San Ignacio/Las Tusas Sapello/Tierra Monte Tecolotito Tererro/Tres Lagunas Trujillo Upper Gallinas Villanueva/Pecos River Valley Windsor Creek/Holy Ghost	Conchas Lake Las Vegas, Southeast Trementina-Variado Sabinoso	

	Conchas Lake Las Vegas, Southeast Trementina-Variado Sabinoso		
Total	30	4	0

County	High Risk Communities	Moderate Risk Communities	Low Risk Communities
Sandoval (45)	126 Corridor 485 Corridor Algodones Areas 1,2,3 (Jemez Springs) Canada Chaparral Girl Scout Camp Cochiti Mesa Corrales East Deer Lake Evergreen Hills Subdivision Girls Scout Camp Historic Placitas Jemez Pueblo Jemez Springs La Cueva La Jara La Madera Pena Blanca Placitas Ponderosa North Ponderosa South Regina Rio de Las Vacas San Felipe Pueblo Seven Springs Sierra de los Pinos Sile Taylor Thompson Ridge	Angostura Bernalillo Budaghers Canon Cochiti Lake Cochiti Pueblo Corrales West Cuba Puertecito Rio Rancho Santa Ana Pueblo Santa Domingo Pueblo Sandia Pueblo San Ysidro Valle Grande Zia Pueblo	
Total	29	16	0

County	High Risk Communities	Moderate Risk Communities	Low Risk Communities
Santa Fe (42)	Edgewood San Pedro Cedar Grove Bella Vista Thunder Mountain Madrid Mail Box RD	Pojoaque Sombrillo and Cuartelez Chimayo Cundiyo Tesuque Chupadero La Tierra	Las Campanas

	Galisteo Los Cerrillos Turquoise San Marcos & Turquoise Trail El Dorado Lamy Cañoncito Old Santa Fe Trail Arroyo Hondo Ojo de la Vaca Apache Ridge La Barbaria Canada de los Alamos Glorieta Pass La Cueva Canyon La Jolla Bishops Lodge Hide Park Pacheco Canyon Tano RD	La Cienega Los Pinos Arroyo Hondo Nambe Pueblo Tesuque Pueblo San Ildefonso Pueblo Pojoaque Pueblo	
Total	27	14	1

County	High Risk Communities	Moderate Risk Communities	Low Risk Communities
Sierra (25)	Animas Creek Arrey/Derry Bosque Chiz Chloride Hermosa Kingston Lake Valley Lake Valley Historic District Mims Pond Monticello Placita Poverty Creek Rio Grande Corridor-Palomas Seco Subdivision	Arrey/Derry Caballo Caballo Lake Lease Lots Cuchillo Elephant Butte King Canyon Oasis Palomas Truth or Consequences Winston	Hillsboro
Total	14	10	1

County	High Risk Communities	Moderate Risk Communities	Low Risk Communities
Socorro (35)	Abeytas Alamillo Bernardo Bosquecito Contreras Hop Canyon	Abbe Spring Subdivision Alamo Bingham Claunch Dusty Durfee Canyon	Laborcita Luis Lopez San Antonio

	Jarales Lemitar La Joya Los Nutrias Patterson Canyon Polvadera Pueblitos Pueblitos Sabinal San Acacia San Francisco San Marcial San Pedro Veguita Water Canyon	Florida Magdalena Mill Canyon Riley Sargent Cayon Socorro	
Total	20	12	3

County	High Risk Communities	Moderate Risk Communities	Low Risk Communities
Taos (69)	Apache Canyon Cabresto Canyon Cañon Heights Deer Mesa El Salto El Valle Gallina Canyon Lama Latir/El Rito Pinabete Hills Pot Creek Shady Brook Sipapu Taos Canyon/Rio Fernando Village of Taos Ski Valley Three Peaks Tierra Blanca Town of Taos Two Peaks Turley Mill Upper Red River Valley Valle Escondido Vallecitos	Amalia Arroyo Hondo Arroyo Seco Canon Carson Cerro Chamisal Costilla Las Trampas Llano Largo Llano Llegua RD Llano Quemado Llano San Juan Ojo Caliente Placita Questa Red River San Cristobal Santa Barbara Talpa Taos Pueblo Town of Red River Tres Piedras Tres Orejas Vadito Valdez	Des Montes El Prado Los Cordovas Lower Des Montes Lower Rio Pueblo/Gold Course Penasco Picuris Pueblo Pilar Ranchos De Taos Rio Lucio Rio Pueblo Rodarte Stagecoach Star Sunshine Valley Taos Taos Mesa Ventero Vista Linda

		Wiemer Heights	
Total	23	27	19

County	High Risk Communities	Moderate Risk Communities	Low Risk Communities
Torrance (27)	A 102 Deer Canyon Preserve Duran Echo Hills (Loop) Forest Road 442 Forest Valley Ranch Fourth of July Campground Game Road Loma Parda Manzano Manzano Morning Mcintosh Red Bluff Sherwood Forest Tajique	Clines Corners Encino Estancia Mission Hills Moriarty Mountainair Punta de Agua Sunset Acres Sweetwater Hills Subdivision Torreon Williard	Homestead Estates
Total	15	11	1

County	High Risk Communities	Moderate Risk Communities	Low Risk Communities
Union (12)		Capulin Folsom	Amistad Clayton Des Moines Gladstone Grenville Hayden Mount Dora Sedan Strong City Thomas
Total	0	2	10

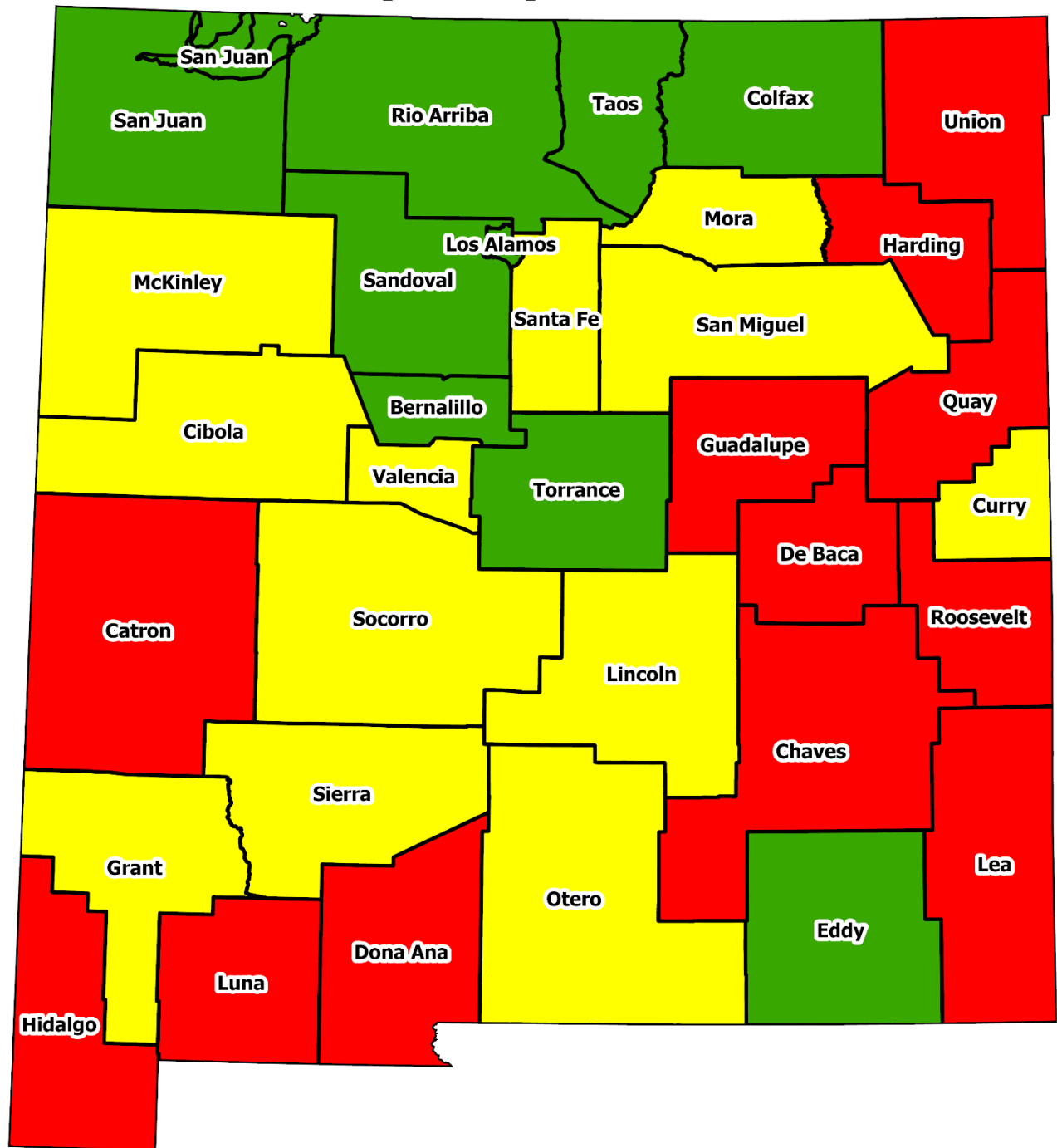
County	High Risk Communities	Moderate Risk Communities	Low Risk Communities
Valencia (18)	Bosque Farms Casa Colorado City of Rio Communities El Cerro Mission Las Maravillas Los Chavez Los Lunas Bosque		Belen Highland Meadows Jarales Los Lunas Southwest Mesa

	Meadow Lake Peralta Salomon Estates Tierra Grande Tome Valencia		
Total	13	0	5

	High Risk Communities	Moderate Risk Communities	Low Risk Communities
TOTALS	453	311	158



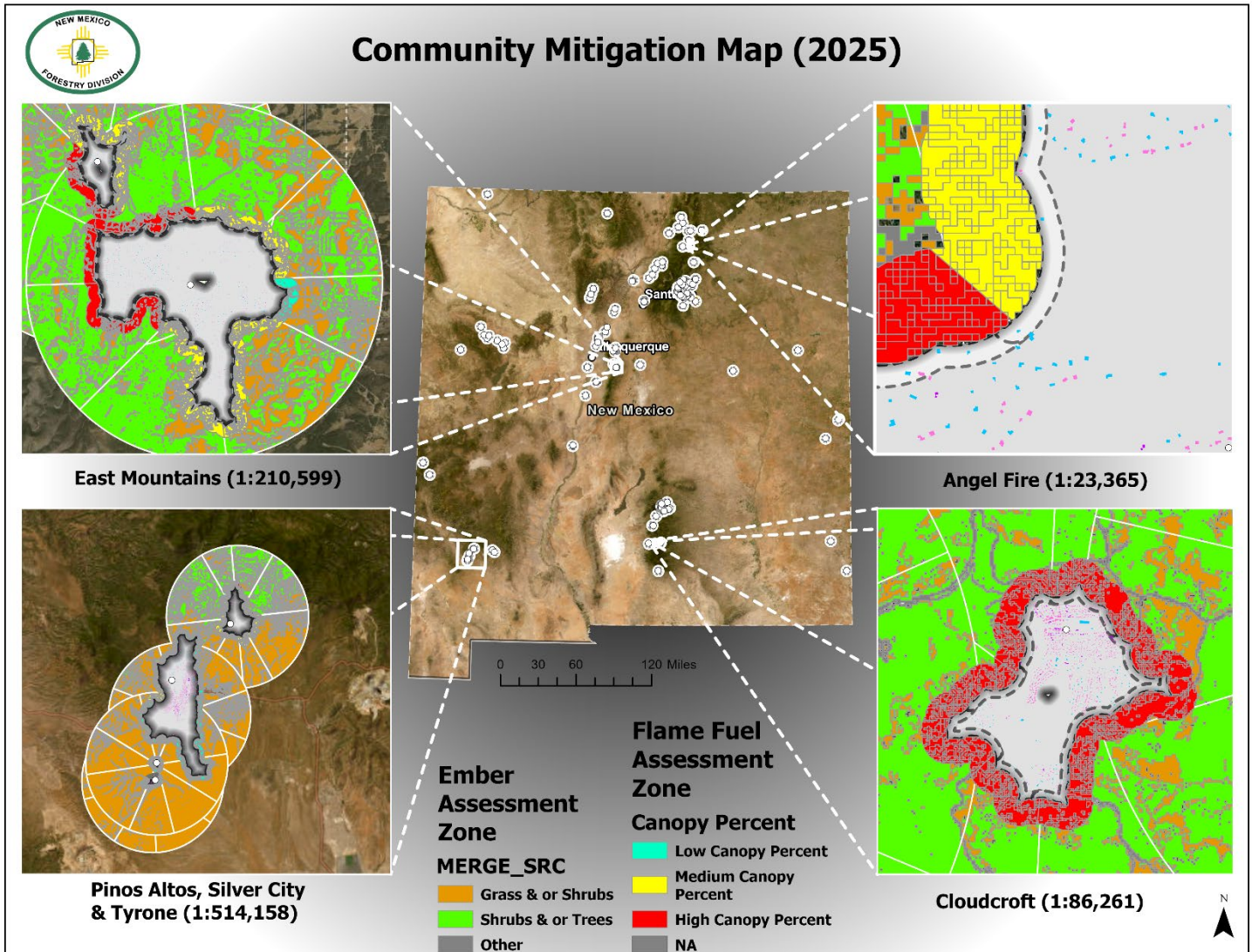
New Mexico CWPP Update Status (2025)



CWPP 2025
Status Update
2008 - 2016
2017 - 2020
2021 - 2025

0 30 60 120 Miles





The above image depicts the Division's Community Mitigation Map, which is available here: <https://www.emnrd.nm.gov/sfd/fire-prevention-programs/community-mitigation-maps>.

Using the interactive map, viewers can zoom in on communities throughout the state to see which areas are most at risk from embers and flames due to canopy coverage or outlying vegetation. Created with data from IBHS, the U.S. Forest Service and The Nature Conservancy, this map will help guide treatment efforts in high-risk communities through thinning and mitigation projects, as well as potential grant funding for these and other efforts, including home hardening and defensible space enhancement on private land.

APPENDIX 1

Community Wildfire Protection Plan² Summary and Checklist

Step One: Convene Decision Makers

- Form a core team made up of representatives from the appropriate local governments, local fire authority, and state agency responsible for forest management.

Step Two: Engage Interested Parties

- Contact and encourage active involvement in plan development from a broad range of interested organizations and stakeholders.
- Identify and engage local representatives of the USFS and BLM.
- Contact and involve other land management agencies as appropriate.

Step Three: Establish a Community Base Map

- Work with partners to establish a baseline map of the community that defines the community's WUI and displays inhabited areas at risk, forested areas that contain critical human infrastructure, and forest areas at risk for large-scale fire disturbance.

Step Four: Identify Problems to Be Addressed

- Work with partners to identify problems to be addressed, including fuel hazards; risk of wildfire occurrence; structural ignitability; local preparedness capability; and location of homes, businesses, essential infrastructure, and other community values at risk.
- This "community risk assessment" can be simple or complex depending on the resources available to the community and partners.

Step Five: Establish Community Priorities and Recommendations

- Use the base map and community risk assessment to facilitate a collaborative community discussion that leads to the identification of local priorities for fuel treatment, reducing structural ignitability, and improving fire response capability.
- Clearly indicate whether priority projects are directly related to protection of communities and essential infrastructure or to reducing wildfire risks to other community values.

Step Six: Develop an Action Plan and Assessment Strategy

- Consider developing a detailed implementation strategy to accompany the CWPP as well as a monitoring plan that will ensure its long-term success.

Step Seven: Complete the Community Wildfire Protection Plan

- Consider the CWPP complete for the year and date stamp the document.
- Communicate the results to the community and partners.
- Collect information to update the plan for revision the following year.

² This checklist was adapted from the publication “Preparing a Community Wildfire Protection Plan: A handbook for Wildland-Urban Interface Communities” that can be downloaded from <https://www.iafc.org>. The checklist was modified by the New Mexico Fire Planning Task Force for use in New Mexico.

APPENDIX 2

REFERENCE LIST

[*Wildland/Urban Interface Fire Hazard Assessment Methodology*](#). NWCG. (undated).

[*A Collaborative Approach for Reducing Wildland Fire Risks to Communities and the Environment. 10-Year Comprehensive Strategy Implementation Plan.*](#) May 2002.

[*FIELD GUIDANCE Identifying and Prioritizing Communities at Risk*](#). National Association of State Foresters. June 2003.

[*Preparing a Community Wildfire Protection Plan, A handbook for Wildland-Urban Interface Communities.*](#) Society of American Foresters. March 2004.

[*Preparing for Wildfires: Protect Your Communities TFS.*](#) Texas Forestry Service (TFS). December 2023.

[*Biden-Harris Administration announces \\$1 Billion in Community Wildfire Defense Grants from Bipartisan Infrastructure Law.*](#) USDA. July 2022.

FIRE PLANNING TASK FORCE MEETING MINUTES

A. April 4, 2025

MINUTES Fire Planning Task Force April 4, 2025

1. Call to Order

1:00P

a. Board Members and Delegates Present:

Laura McCarthy, Forestry Division Director, New Mexico Forestry Division (NMFD) Chair
Randy Varela, State Fire Marshal*
Michael Chacon, Tribal Environmental Justice Specialist, Department of Indian Affairs
Tamara KuyKendall, Construction Industries Bureau Chief, Regulation and Licensing Department (CID)*
Cecilia Mavrommatis, Local Government Division Director, Department of Finance and Admin (DFA)*
Francisco Salazar, Fire Prevention, U.S. Forest Service*
Teresa Rigby, Fire Management Specialist, Bureau of Land Management
Jacob Rowberry, New Mexico Municipal League (NMML)
Aelysea Webb, Government Relations Manager, New Mexico Counties
Erik Litzenberg, Volunteer Fire Department in Santa Fe County
John Gilbert, Deputy Fire Chief Operations, San Juan County Fire & Rescue*

b. Board Members Absent:

None

c. Others Present:

Abigail Plecki, CWDG Program Coordinator, New Mexico Forestry Division
Randy Fowler, Data Analysis, New Mexico Forestry Division
Melissa Robertson, Property and Casualty Bureau Chief, Office of the Superintendent of Insurance (OSI)
Elouisa Macias, Consumer Assistance Bureau Chief, Office of the Superintendent of Insurance
Elizabeth Johnson, Associate General Counsel, Office of the Superintendent of Insurance
Megan Rangel-Lynch, Fire Adapted Communities New Mexico, Forest Stewards Guild (FACNM)
Porfirio Chavarria, City of Santa Fe Fire Department
Jeremy Klass, Recovery and Mitigation Bureau Chief, Dept Homeland Security & Emergency Mgmt
Jason Quintana, Equity Program, Infrastructure Bureau, Department of Finance Administration
Dana Vackar Strang, Assistant Commissioner, New Mexico State Land Office (SLO)
Alan Hook, Santa Fe Municipal Watershed Program Manager
Miles Conway, Santa Fe Homebuilders Association, Build New Mexico

*denotes virtual attendance

2. Approve Agenda – Review and Approve (Action Item)

Laura McCarthy requested to amend agenda to include item 7(e) of “identify task teams.” Erik Litzenberg moved to approve the agenda as amended, which was seconded by Michael Chacon. The Task Force unanimously approved the April 4, 2025 agenda.

3. Adopt Open Meetings Act Resolution for CY2025 (Action Item)

Abigail opened discussion of the resolution. Michael Chacon motioned to adopt the Open Meetings Act Resolution, Teresa Rigby seconded the motion and the resolution was adopted.

4. Elect Chair

Laura called out if anyone would like to be nominated as chair. Erik Litzenberg nominated Laura as chair, Jacob Rowberry motioned, and Aelysea seconded, and the measure was adopted unanimously.

5. Approval Minutes of September 16, 2024

Laura asked the group for any discussion or changes. Teresa Rigby made the position to adopt the minutes, Erik Litzenberg seconded, and the minutes were adopted unanimously.

6. Legislative Session Update

Laura explained that because Senate Bill 33 was not yet signed by the Governor, the Fire Planning Task Force was meeting under the authority of Chapter 68-2-34 NMSA 1978 without the changes called for in that bill. Laura provided an overview of Senate Bill 33. She also provided an overview of House Bill 175 that was signed by the Governor on March 19, 2025.

7. Work Planning

Laura introduced the idea that the Task Force and participants, whether or not SB33 is signed, needs to form working groups that are task oriented and deliver results for New Mexico. Randall Fowler presented the methodology for mapping of Wildland Urban Interface (WUI) buffers as defined by HB175.

Mapping of High-Risk Areas: Provide input on the mapping process and assist the Forestry Division to determine if a follow up contract to refine the method and data and build a public interface is needed.

- Megan Rangel-Lynch, Teresa Rigby, Jeremy Klass, and Melissa Robinson.

Standards: Provide input to bring standards for defensible space, home hardening and neighborhoods to the Task Force for adoption at the next meeting. Tamera will meet with Clay Bailey to get direction on building codes.

- Melissa Robinson, Aaron Garcia (State Fire Marshals Office), Jacob Rowberry, Alan Hook, and potentially Porfirio Chavarria and Mark Myers.

Utility study group – participate in the Public Regulation Commission workshop series, starting with the May 8 workshop, and determine if follow up by the Fire Planning Task Force with a study group is needed.

- Randy Valera, Jacob Roseberry, and Teresa Rigby.

8. Round Robin

Dana Vackar Strang – SLO and Forestry Division is working on a MOA for prescribed fire and it is within SLO legal process. Updating and working on their Price Agreement including fire/burn plans. There is a new grant position that was just hired last fall, and she is working on pursuing funding for fire management plans.

Cecilia Mavrommatis – Suggested that the Task Force reconvene after the legislation dust settles and how these bills connect.

Porfirio Chavarria – City of Santa Fe is looking to adopt the ICC WUI codes. Curious to see how SB33 will fit into our current state systems and has piolet project areas in mind, if SB33 passes. Solicited Ready, Set, Go event in Santa Fe, May 3.

Aelysea Webb – Wildfire Risk Reduction Grant is now closed, and review will commence the 18. The first WUI Summit planning meeting will start, which would be a great area for the SB33/HB175 criteria engagement. NM Annual Conference will be on June 15 and solicited any presenters for this meeting.

Teresa Rigby – Hiring and funding freezes are happening. State resources are still available and being leveraged for fire season. BLM has been increasing the number of acres treated and Teresa is looking forward to see where efforts are overlapping.

9. Other Business

The next Task Force meeting date of May 29th was selected, with the goal of having task groups bring a scope of work or if ready, final products, for the Fire Planning Task Force to vote on. Abigail will put together an email with contacts for each task group and next steps.

10. Adjourn

Michael Chacon made a motion to adjourn, seconded by Aelysea Webb, and the meeting was adjourned at 3:43 p.m.

B. June 6, 2025

MINUTES

Fire Planning Task Force

June 6, 2025

9:00 AM Mountain Time

**Office of the Secretary Conference Room 3rd Floor
Wendell Chino Building 1220 South St. Francis Drive
Santa Fe, New Mexico 87505**

1. Introductions and Roll Call

At 9:00 AM,

Laura McCarthy brought the meeting to order and provided for a roll call.

a. Board Members and Delegates Present:

Laura McCarthy, Forestry Division Director, New Mexico Forestry Division (NMFD) Chair
Randy Varela, State Fire Marshal
Michael Chacon, Tribal Environmental Justice Specialist, Department of Indian Affairs
Martin Romero – Regulation and Licensing Department (Construction and Industries Division)
Erik Litzenberg, Volunteer Fire Department in Santa Fe County
John Gilbert, Deputy Fire Chief, San Juan County Fire Rescue
Matt Hurteau, Fire Scientist, University of New Mexico
Julie Rochman, Property Insurance Carrier Trade Association
Alice Kane, Superintendent of Insurance, Office of the Superintendent of Insurance
Joy Esparsen, Director, New Mexico Association of Counties
Melanie Barnes, State Director, Bureau of Land Management
Jake Nuttall, Regional Forester, U.S. Forest Service
Mark Meyers, State Land Office, Forester alternate for Commissioner of Public Lands
Cecilia Mavrommatis, Local Government Division Director, Department of Finance and Admin (DFA)*
Josette Monette, Secretary, Indian Affairs Department*
Ali Rye, Department of Homeland Security and Emergency Management*

b. Board Members Absent:

New Mexico Municipal League

c. Others Present, Staff and Public Attendees:

Abigail Plecki, Community Wildfire Defense Grant Program Coordinator, New Mexico Forestry Division
Randy Fowler, Data Analysis, New Mexico Forestry Division
Melissa Robertson, Property and Casualty Bureau Chief, Office of the Superintendent of Insurance (OSI)
Tim Vigil, OSI Deputy Superintendent
Francisco Salazar, Fire Prevention, U.S. Forest Service
Tamara Kuykendall, Construction Industries Bureau Chief, Regulation and Licensing Department (CID)
George Ducker, Communications Specialist, New Mexico Forestry Division

Brad Hill, Community Development for the Town of Edgewood
Megan Rangel-Lynch, Fire Adapted Communities New Mexico (FACNM), Forest Stewards Guild (FSG)
Porfirio Chavarria, City of Santa Fe Fire Department
Alan Hook, Santa Fe Municipal Watershed Program Manager
Elizabeth Johnson, Associate General Counsel, Office of the Superintendent of Insurance*
Dagmar Llewlyn, member of the public*
Teresa Rigby, Fire Management Specialist, Bureau of Land Management*

*denotes virtual attendance

2. Approve Agenda – Review and Approve (Action Item)

Laura McCarthy asked if there were any changes requested for the agenda. Alice Kane made a motion to amend the “Other Business” agenda item to add public comment. The motion was seconded by Erik Litzenberg and approved by unanimous vote. Erik Litzenberg moved to accept the agenda as amended and Matt Hurteau seconded. The vote to approve was unanimous.

3. Approve Minutes of April 4, 2025 (Action Item)

Ms. McCarthy introduced the minutes from the April 4, 2025 meeting. She asked if changes were needed to the minutes and no changes were requested. Melanie Barnes moved to approve the minutes. Mr. Litzenberg seconded. The vote to approve was unanimous consent.

4. Meeting Goals Presented

Abigail Plecki provided a slide deck that reviewed the goals for the day’s meeting. Ms. McCarthy noted that no decision items would be brought today, but feedback would be requested on all three topics pertaining to the Wildfire Prepared Program (mapping, standards, and eligibility) for decisions at the November meeting.

Ms. McCarthy introduced an overview of Wildfire Prepared Act. SB 33 that created this Wildfire Prepared Program in January. She noted that the legislature did not approve funding for this program and the Task Force’s work is to set up program guidelines before the legislature convenes in 2026.

The Fire Planning Task Force’s Goals were outlined regarding the Wildfire Prepared Program:

1. Identify and map high-risk areas within the state;
2. Develop standards for building codes, defensible space requirements and ordinances that will reduce the threat of wildfire;
3. Assist communities with adopting and implementing building codes and ordinances;
4. Develop wildfire prepared standards for certification that are consistent with nationally recognized standard-setting organization;
5. Each year by June 30, develop guidelines and requirements for eligibility grants; and
6. Report progress and any recommendations for legislation to the governor and the legislature by December 15 of each year

5. Mapping Sub-Group Update

Ms. Plecki noted the Mapping Sub-Group members are Melissa Robertson, Megan Rangel-Lynch, Teresa Rigby, Randy Fowler, Abigail Plecki, and Jeremy Klass. Matt Hurteau and a Forest Service staff identified by Jake Nuttall will be added to this sub-group.

Ms. Plecki noted that the sub-group met once since the last meeting and discussed the backlash to wildfire risk mapping in Oregon and thought of the option to call the work mitigation mapping. Melissa Robertson provided an update on the mapping commissioned by the Superintendent of Insurance and plans for the funding in Section 5 of House Bill 2 to the OSI. Insurance Institute of Business and Home Safety (IBHS) now has a Wildfire Prepared Neighborhood program with a formula for structure-to-structure protection that will be included in the mapping. The mitigation map will be used to guide investments if the state legislature provides future

funding for the Wildfire Prepared Program.

Ms. Plecki presented an overview of the Forestry Division's new map of Wildland Urban Interface areas with high-risk of wildfire, to guide investments of the new authority for buffer areas from House Bill 175. The Forestry Division will identify the total number of homes statewide that are in the high-risk buffer areas and will integrate this information in the Communities at Risk Report prepared by the Task Force for the December 15th, 2025 deadline.

Task Force members asked for a unified communications approach and document about the Task Force work. A communications sub-group will be formed.

6. Standards Sub-Group Update

Ms. Plecki noted that the Standards sub-group members are Melissa Robertson, Tamara Kuykendall, Jacob Rowberry, Mark Meyers, Aaron Garcia, Alan Hook, Justice Jones, Brian Powell, and Steve Hawks. Julie Rochman will be added to the standards sub-group. The sub-group will propose the Task Force adopt the IBHS Wildfire Prepared Home Technical Standard for New Mexico, and one state agency will likely need to enter into an agreement with IBHS. The sub-group will consider the needs of homeowners whose property is not eligible per those standards and differences between local codes, where they exist, and gaps that could be filled with the International Code Council's Wildland Urban Interface Code. Capacity to enforce codes and land use planning and zoning will also be considered in tandem with IBHS Wildfire Prepared Neighborhood Technical Standards.

7. Wildfire Prepared Program Grant Eligibility

Ms. Plecki reviewed the three grant types. Within the Wildfire Prepared Program there are grants awarded to political subdivisions and grants awarded to qualified entities that work with eligible property owners, though neither is funded. The third type of grant is for the F.A.I.R. Plan insured, funded for FY26 in House Bill 2. Political subdivisions in risk areas identified in Mitigation Map are proposed to be eligible for capacity grants to organize neighborhoods, provide technical assistance and conduct assessments. Also proposed is that after the political subdivision has organized a neighborhood and certified that 80% of residents will retrofit to Wildfire Prepared Homes standards, then eligible property owners who meet low-income criteria (NM Stat § 22-8F-2 (2024)) would be eligible for retrofit grants when funding is available. Eligibility will also include identification of the neighborhood or area as high risk in a current Community Wildfire Protection Plan.

8. Community Wildfire Protection Plan (CWPP) Sub-group Update

Ms. Plecki noted the CWPP sub-group members are Joy Esparsen, Hannah Woods, Teresa Rigby, Erik Litzenberg, Vernon Muller, and Abigail Plecki. CWPPs are collected through the Forestry Division districts and submitted to Abigail Plecki by September 15th of each year. The sub-group will review and bring recommendations to the Task Force meeting in November for approval. After that meeting, the Forestry Division will update the Community's At-Risk (CAR) Plan Report due annually December 15th to Governor and Legislature.

9. State Forester's Update

Laura McCarthy – Senate Memorial 2 created a wildfire study group. The Legislative Council Service directed EMRND to create a wildfire study group that will meet three times, including investor owned utility and rural electric co-ops. The study group will identify gaps and needed policies and make recommendations to the legislature.

10. Round Robin

Joy Esparsen – NM Counties just awarded nine more grants for education and fuels mitigation including four education grants and five fuels mitigation grants. NM Counties is planning the Wildland Urban Fire Summit which is in late September.

Melanie Barnes – BLM is working with Fire Adapted Communities New Mexico and supporting fire prevention

campaigns with Maverik gas stations and Southwest Prevention and Information Committee's "Spark Safety Not Wildfire Campaign." The BLM provided local community assistance grants to three fire departments.

Mark Meyers – SLO has issued an Invitation to Bid for statewide price agreement open until June 10. Starting to work on fire management plans on state trust lands for suppression and management with the Forestry Division.

Randy Varela – SFM – They are opening grant applications July 1st 2025 for 60 days for fire departments across the state. Funds distribution will increase this fiscal year.

Erik Litzenberg – Volunteer fire department public member. The effects of non-reimbursements due to frozen federal funds are being felt across the state and local communities.

Alice Kane – OSI's focus is access and affordability of insurance. OSI has been working to have the F.A.I.R. Plan embrace more policy holders who aren't getting coverage and talking with industry about whether mitigation could lead to discounts for homeowners.

Jake Nuttall – USFS reports that there haven't been a lot of opportunities for prescribed or natural ignitions for resource benefit. The agency implemented over 108,000 acres of treatment this year in the Southwestern Region 3.

Matt Hurteau - is working with Senator Lujan's staff on Congressional Bill S-647 sponsored by Senators Sullivan, Sheehy, and Padilla to establish wildfire research centers across the country. Each region will draw upon locals to help identify treatments and modeling work for management and suppression.

Jule Rochman - will be traveling to the IBHS center next month in South Carolina for the 15th anniversary celebration.

Ali Rye – DHSEM is focused on long-term recovery for wildfire. They do receive mitigation dollars after disasters and want to make sure those dollars get into the mitigation space. DHSEM wants to make sure that folks understand what post-fire space looks like and what watershed restoration looks like.

Martin Romero – CID has a home retrofit training coming up on July 15th 2025. Industry experts will speak on how to perform a Class-A roof retrofit.

Porfirio Chavarria - City of Santa Fe is partnering with Headwaters Economics on wildfire resilience and developing new codes for property protection, life and safety. The City goal is to ensure that folks have insurance availability, and they will issue insurance certificates through the program.

Michael Chacon– IAD is an information clearing house and wants to share the information from this Task Force with tribes, nations, and pueblos.

Megan Rangel-Lynch – Forest Stewards Guild awarded BLM microgrants recently. Eytan Krasilovsky added there is a technology demonstration with wildfire detection cameras on Tesuque Peak. The 2-3-2 Partnership is doing a legislative tour for elected officials on August 26th 2025 with a focus on water and fire agencies.

11. Other Business

No other business was brought up.

12. Meeting Cadence

The next meeting was scheduled Monday, November 17th 2025, from 9:00 AM to 12:00 PM Mountain Time. The Task Force will also schedule a meeting for April 2026, after the legislative session.

Ms. McCarthy summarized that anyone who wants to be involved in the subgroup should communicate with the staff. The Open Meetings Act is clear that subgroups with expertise to gather information and formulate ideas are allowable. The Task Force will run the sub-groups as an open process and focus on decision making using information provided by the subgroups.

13. Adjourn

Alice Kane made a motion to adjourn, seconded by Matthew Hurteau, and the meeting was adjourned at 11:54 p.m.

C. November 17, 2025

**MINUTES DRAFT
Fire Planning Task Force
November 17, 2025
9:00 AM Mountain Time
Office of the Secretary Conference Room 3rd Floor
Wendell Chino Building 1220 South St. Francis Drive
Santa Fe, New Mexico 87505**

1. Introductions and Roll Call

At 9:00 AM,

Laura McCarthy brought the meeting to order and provided for a roll call.

a. Board Members and Delegates Present:

1. Melanie Barnes, State Director, Bureau of Land Management
2. Jake Nuttall, Regional Forester, United States Forest Service*
3. Josett Monette, Secretary, Indian Affairs Department*
4. Michael Chacon, Tribal Environmental Justice Specialist, Department of Indian Affairs*
5. Randy Varela, State Fire Marshal
6. Cecilia Mavrommatis, Local Government Division Director, Department of Finance and Admin (DFA)
7. Laura McCarthy, Forestry Division Director, New Mexico Forestry Division (NMFD) Chair
8. Mark Meyers, State Land Office, Forester alternate for Commissioner of Public Lands
9. Erik Litzenberg, Volunteer Fire Department in Santa Fe County
10. Jacob Rowberry, NM Municipal League
11. Tamara Kuykendall, Construction Industries Bureau Chief, CID
12. Martin Romero – Regulation and Licensing Department
13. Joy Esparsen, Director, New Mexico Association of Counties
14. Alice Kane, Superintendent of Insurance, Office of the Superintendent of Insurance
15. Jeremy Klass, NM Department of Homeland Security and Emergency Management
16. Matt Hurteau, Fire Scientist, University of New Mexico
17. Julie Rochman, Property Insurance Carrier Trade Association

b. Board Members Absent:

Local Government Fire Department

c. Others Present, Staff and Public Attendees:

Randy Fowler, Data Analysis, New Mexico Forestry Division
Melissa Robertson, Property and Casualty Bureau Chief, Office of the Superintendent of Insurance (OSI)
Tim Vigil, OSI Deputy Superintendent

George Ducker, Communications Manager, NM Forestry Division
Emery Veilleux, Prevention and Communications Coordinator, NM Forestry Division
Francisco Salazar, Fire Prevention, U.S. Forest Service*
Zach Saavedra, BLM
Porfirio Chavarria, City of Santa Fe Fire Department
Anthony Leyba, State Fire Marshal's Office
Hannah Kase Woods, NM Association of Counties
Alan Hook, Santa Fe Municipal Watershed Program Manager
Jonathan Frenzen, Greater Santa Fe Fire Association
Ned Jacobs, Insurance Agent
Eytan Krasilovsky Forest Stewards Guild (FSG)
Teresa Rigby, Fire Management Specialist, Bureau of Land Management

*denotes virtual attendance

2. Approve Agenda – Review and Approve (Action Item)

Ms. McCarthy motioned to amend the meeting agenda by moving the CWPP Update section from item 8 foreword to item 4. Mark Meyers seconded. There was no opposition. Julie Rochman moved to adopt the amended agenda. Alice Kane seconded. All were in favor.

3. Approve Minutes of June 6, 2025 (Action Item)

Ms. McCarthy introduced the minutes from the June 6, 2025, meeting. She asked if changes were needed to the minutes, and no changes were requested. Melanie Barnes moved to approve the minutes. Cecilia Mavrommatis seconded. The vote to approve was unanimous consent.

4. Community Wildfire Protection Plan (CWPP) Sub-group Update (Action Item)

Ms. McCarthy introduced the CWPP section of the agenda. Joy Esparson is chair of the subcommittee, which also includes Hannah Kase Woods, Teresa Rigby, Erik Litzenberg, and Abigail Plecki.

CWPPs are collected through the Forestry Division districts and submitted to Forestry Division by September 15th of each year. Recommendations are brought to the November Fire Planning Task Force for approval. After which, the Forestry Division updates the Community's At-Risk (CAR) Plan Report due annually December 15th to Governor and Legislature.

The sub-group met on September 19, 2025, to review and approve CWPP updates from Eddy County, Sandoval County and Eldorado Communities.

Eddy County – Approved contingent on signatures and receipt of digital Wildland Urban Interface (WUI) map.

Comments from Sub-Committee

- Appears to be a new contractor (Craig Daugherty) focused on process and collaboration
- Meant to only revise the existing product; wanted to ensure it matched
- It looks like some of their strike-throughs are still in the document
- It is a little unclear if the chart on pages 12-14 is reflecting the current CAR inventory or NFPA 1144
- Liked the changes they document and reflect why the changes did or did not happen

Requirements:

- Signatures needed
- George Ducker will check that the digital WUI map has been provided

- Updating links for strikethroughs

Ms. Mavrommatis motioned to approve Eddy County CWPP contingent on addressing the required items. Randy Varela seconded. All were in favor.

Eldorado Community

Comments From Committee

- Didn't include the CAR table; this is designed to make it easier on the Forestry Division
- It makes sense for them to ensure that Santa Fe County governance has bought in since it is a spinoff of the existing county plans
- Really liked how this one was laid out for readability

Requirements

- Recommend their signatures include the Santa Fe County Commission
- Provide a CAR table that shows the existing and new rating
- George Ducker will check that the digital WUI map has been provided

Jeremy Klass motioned to approve Eldorado Community CWPP contingent on addressing the required items. Jacob Rowberry seconded. All were in favor.

Sandoval County

Comments From Committee

- Already on the HUB even though not approved, but sounds like it can be amended on the fly
- Liked treatment type with acreage
- Didn't see a lot of detail on wildland training (see recommendations)
- Really like the community assessments and thorough job in the structural ignitability
- Like the detail in areas of concern and opportunities; very helpful in a CWPP
- Included high values in the area that need protection
- Inclusion of modeling is interesting

Requirements

- Signatures Needed

Mr. Varela made a motion to approve the Sandoval County CWPP when required items are completed. Tamara Kuykendall seconded. All were in favor.

Ms. Esparsen suggested that the Task Force review and discuss the CWPP Guidance Recommendations (Action Item) at the spring 2026 meeting.

Ms. Mavrommatis motioned to table the Action Item on CWPP Guidance Recommendations until the Task Force's spring 2026 meeting. Ms. Kane seconded. All approved.

5. Mapping Sub-Group Update

The Mapping Sub-group members are Melissa Robertson, Randy Fowler, and Matt Hurteau.

1. NMFD Home Hardening map with embers to help prioritize buffer zones through NM

- a. Randall Fowler presented slides explaining the new Flame and Ember Zone map [available on the NMFD website](#). This mapping was done for the top 100 communities at risk from wildfire. Mr.

Fowler noted that he would like to ultimately automate this process with help from Matt Hurteau. Automation will speed up the process of updating.

- b. Ms. McCarthy explained that the expenditure of money EMNRD received for community buffers through HB175 will be guided by this mapping effort.

2. Zesty AI contract

- a. Melissa Robertson presented slides on ZESTY AI, a company already in use by the insurance agencies to map risk down to the parcel level. She explained that ZESTY already has contracts with data imagery companies and also state Regulation and Licensing Departments for mortgages and construction updates. ZESTY provides a score for each individual home and can help guide homeowner decisions on how to retrofit.

3. Planscape open source

- a. Matt Hurteau presented on Planscape's data of risk management, such as risk of ignition from embers traveling into a community. Planscape provides open-source access to new data layers that improve on LANDFIRE, using satellite data, SWERI and other data sets, and Mr. Hurteau asked that access be provided to the home hardening map.

6. Standards Sub-Group Update (Action Item)

The participants in this sub-group are: Melissa Robertson, Tamara Kuykendall, Jacob Rowberry, Mark Meyers, Aaron Garcia, Alan Hook, Justice Jones, Brian Powell, and Steve Hawks.

Mr. Hawks presented on IBHS's Wildfire Prepared Homes Program, and the standards by which homes are judged to be in compliance and receive a certificate of home hardening good for three years, with annual check-ups to ensure homeowner compliance throughout. He also presented on the NM-specific roofing standard that WPH had developed for flat-roofed homes which are common in New Mexico.

Ms. McCarthy updated the Task Force that, as part of the mandate from Senate Bill 33, the standards should be adopted. The standards are needed to guide future funding for grants to help homeowners.

The Office of the Superintendent of Insurance is already using the IBHS standards for their F.A.I.R. plan home hardening grant guidelines. The goal is to make homes more resilient against wildfire and connect those needs with what the insurance industry wants to see happening in homes across the west. Additionally, the insurance industry is becoming more comfortable with these measures, and there's no other way to achieve these goals without responding to real risk that insurance companies take on when they write policies.

Ms. Rochman moved to adopt the IBHS Wildfire Prepared Home standards as voluntary standards for home hardening and mitigation in New Mexico. Ms. Kane seconded. All were in favor.

7. Update on F.A.I.R Insured Home Hardening Grants

Ms. Robertson presented on the use of ZESTY mapping in agreement with the National Association of Insurance Commissioners to identify the first community and homeowners for the pilot of OSI's Home Hardening grant program – Wimsatt, which has 28 FAIR Plan policy holders. OSI has identified another 800 properties in three areas across the state.

One contractor will be used for any home repairs through State Price Agreement, and the contractor will be able to perform work across many areas under one scope of work. OSI is also working with University of Alabama for future funding opportunities.

Currently, Ms. Robertson is meeting with the 3 homeowners who have signed up to receive permission to go on their land. OSI staff will be certified by IBHS to perform the post-work inspections, if necessary, on homes that wish to participate in the program. The goal is to have the Wimsatt homeowners certified by March – to have

homes mitigated through their contractor and certificates issued through IBHS.

8. Communications Subgroup Update

Sub-Group participants include Melissa Robertson, George Ducker, Randy Varela, Teresa Rigby, Anthony Leyba, and Matt Hurteau.

Ms. Robertson presented on the communications efforts ongoing surrounding the roll-out of the IBHS Wildfire Prepared Homes Program. This collaborative effort is being led by OSI for FAIR Plan grant support, supported by Forestry Division, and State Fire Marshal's Office. Informational Town Halls began in Silver City, Nov 12. Topics focused on the Wildfire Prepared Homes program, and how homeowners can get involved, regardless of status on F.A.I.R. plan or not.

Additionally, OSI has partnered with media agency to help with public information (F.A.I.R. Plan), and work will be done on Identifying future communication gaps to public. The Sub-Group will continue to find locations across the state to provide more Town Halls to residents and homeowners.

9. State Forester's Update

Ms. McCarthy presented that the Senate Memorial 2 report was submitted on time to the Water and Natural resources interim committee.

10. Round Robin

Erik Litzenberg – International Association Fire Chiefs (IAFC) – CWPP assistance funds should be coming out through IAFC in the next months. This assistance is available to local governments updating or creating a CWPP.

Julie Rochman – Wants to help focusing on how insurance industry can help communicate what's being done here in New Mexico and potentially pass along to other states. Seeking money for home hardening processes from the insurance industry.

Melanie Barnes – Bureau of Land Management (BLM) – process underway through an executive order to unify the different firefighting agencies. No timeframe or structure but US Department of Interior (DOI) is involved. Discussions of pulling US Forest Service in. The new agency will be called US Wildland Fire Service. BLM will continue to do treatments, prescribed burns and other tasks across the state.

Randy Varela – State Fire Marshal's Office has finished grant process – including 100 million to Volunteer Fire Departments for Personalized Protective Equipment, apparatus and other equipment.

Jeremy Klass – Department of Homeland Security and Emergency Management (DHSEM) is working on a hazard mitigation grant program and providing generators to volunteer fire departments in rural communities – trying to get them for mutual domestics. Federal Emergency Management Agency is DHSEM's main funder and they're helping fund communities for hazard mitigation plan, which has lots of overlap with CWPPS – these should be at least included in hazard mitigation plan annex. The After the Flames conference next spring – would be useful for New Mexico to put a post-fire program together.

Cecilia Mavrommatis – Department of Finance Administration is going into the winter legislative session and potentially creating a working group for those with funds for local response.

Mark Meyers -- State Land Office is conducting ongoing fuels treatments throughout the state including in southern Sacramentos, Angel Fire, Black Lake and Colfax areas, while also continuing to build partnerships for collaborative prescribed fire. Local fire departments are key partners, including nonprofits like Forest Stewards Guild and The Nature Conservancy. Fire Management plans are being considered for state trust lands.

Hannha Kase Woods – NM Association of Counties CWPP grant applications are due March/April of 2026. Deadline can be flexible. The Association and Forestry Division and BLM will be hosting the 2026 Wildland Urban Fire Summit in Silver City.

Jake Nuttall*online – US Forest Service prescribed burn activity has been massive during the shutdown. By Thanksgiving, there will be upwards of 100,000 acres treated in AZ and NM. Carson National Forest is approaching 15,000 acres of pile burning.

Michael Chacon – Indian Affairs Department has started a survey of fire managers amongst Pueblos and Tribes to discover resources needed, what planning and cooperative agreements are in place, and what those agencies have for capability as well as needs.

11. Other Business

The Task Force decided on March 31, 2026, at 9:00 AM Mountain Time as the next meeting.

12. Public Comment

Ned Jacobs – Allstate agent in Santa Fe. Contact Allstate in “product development” to find out more about insurance concerns.

Eytan Krasilovsky – a good amount of urgency to get less yellow and orange on the CWPP map, and more green. The focus should be on getting more CWPPS up to date statewide. Forest Stewards Guild can help speak on the subject with their “Wildfire Wednesdays” newsletter.

13. Adjourn

Ms. Mavrommatis made a motion to adjourn, seconded by Mr. Hurteau, and the meeting was adjourned at 11:32 p.m.