



24TH
RIO GRANDE TRAIL
COMMISSION MEETING



NEW MEXICO
OUTDOOR RECREATION DIVISION



TABLE OF CONTENTS

Commission Meeting Agenda – January 16th, 20263

Attachment A: Meeting Minutes - September 19th, 2025 4

Attachment B: Bosque Trail - Tijeras Canyon Connection Designation Application17

Attachment C: Map of Bosque Trail - Tijeras Canyon Connection23

Attachment D: NM-14 Tijeras to San Antonito Designation Application.....25

Attachment E: Map of NM-14 Tijeras to San Antonito 30

Attachment F: ABQ to Tijeras Designation Application32

Attachment G: Map of ABQ to Tijeras.....38

Attachment H: Program Management Plan40

Attachment I: 2025 Year in Review 92



COMMISSION MEETING AGENDA – 01/16/2026

MEETING LOCATION

Friday, January 16, 9AM to 12PM in Vincent E. Griego Council Chambers – 1 Civic Plaza NW, Albuquerque, NM 87102 .

MICROSOFT TEAMS CONFERENCING OPTION:

Link to join the meeting on-line: <https://bit.ly/RGTC23>

Meeting number (access code): 288 649 591 898 21

Meeting password: T57Uo9oR

CALL IN OPTION:

If you would like to join the meeting by telephone, please call: +1 505-312-4308 Toll Free.

When prompted, dial event number: 977 508 116#

GENERAL INSTRUCTIONS:

During the meeting, please mute yourself unless you would like to speak. This will minimize background noise.

AGENDA:

1. **Call to Order**
2. **Roll Call**
3. **Approval of Agenda**
4. **Approval of Minutes from 23rd Rio Grande Trail Commission meeting**
 - > Attachment A: Meeting Minutes - September 19, 2025
5. **Public Comment**
6. **New Business**
 - a. Updates From the Chair (Chair Bajema)
 - b. Subcommittee Reports
 - i. Tribal Subcommittee (Commissioner Chacon)
 - ii. Alignment Subcommittee (Commissioner Carter)
 1. New Trail Segment Considerations
 - a. Santa Fe Taos Connection, Update
 - b. Realignment Proposal
 - i. Albuquerque: Bosque Trail-Tijeras Connection
 - > Attachment B: Bosque Trail - Tijeras Canyon Connection Designation Application
 - > Attachment C: Map of Bosque Trail - Tijeras Canyon Connection
 - ii. Trail Segment Designation
 - i. NM-14: Tijeras to San Antonito
 - > Attachment D: NM-14 Tijeras to San Antonito Designation Application
 - > Attachment E: Map of NM-14 Tijeras to San Antonito
 - ii. NM-333/Route 66: Albuquerque to Tijeras
 - > Attachment F: ABQ to Tijeras Designation Application
 - > Attachment G: Map of ABQ to Tijeras
 - c. Miscellaneous
 - i. Signage Update
 - ii. 2025 Year in Review
 - iii. Logo Redesign Review
7. **Announcement of Next Meetings**
 - a. Fri, April 10, 2026 – Las Cruces
 - b. Fri, September 18, 2026 – Socorro
8. **Public Comment**
9. **Adjournment**



ATTACHMENT A: MEETING MINUTES - SEPTEMBER 19TH, 2025



23rd Rio Grande Trail Commission Meeting – Minutes

Friday, September 19, 2025 // 9 AM – 12 PM

Taos Council Chambers - 120 Civic Plaza Dr, Taos, NM 87571

Commissioners Present, In-Person:

- Michael Chacon – Tribal Environmental Justice Specialist, IAD
- Howard Gross – HG Conservation Solutions, Public 1
- Steve Harris – Rio Grande Restoration, River Eco
- Ben Bajema – OFS Senior Advisor, EMNRD (Chair)
- Karina Armijo – Outdoor Recreation Division Director, EDD
- Shannon Glendenning – Urban & Regional Planner, DOT
- Dan Carter – Continental Divide Trail, Trail Mgmt.
- Novela Salazar - General Counsel, TD
- Myron Temchin – Temchin Environmental Planning, Public 2

Commissioners Present, Online:

- Toby Velasquez – SPD Division Director, SPD

Commissioners Absent:

- Tucker Davidson – Audubon Society, Bird Eco

1. Call to Order

Chair Bajema called the meeting to order.

2. Roll Call

All Commissioners introduced themselves.

3. Approval of Agenda

Chair Bajema requested a motion to approve the agenda.

Commissioner Armijo made a motion.

Commissioner Harris seconded the motion.

Roll Call Vote:

Commissioner Chacon – YES; Commissioner Gross – YES; Commissioner Harris – YES; Chair Bajema – YES; Commissioner Armijo – YES; Commissioner Glendenning – YES; Commissioner Carter – YES; Commissioner Salazar – YES; Commissioner Temchin – YES; Commissioner Velasquez – YES

With unanimous consent, this motion is approved.

4. Approval of Minutes from the 22nd Rio Grande Trail Commission meeting

Chair Bajema requested a motion to approve the agenda.

Commissioner Temchin made a motion.

Commissioner Gross seconded the motion.

Roll Call Vote:

Commissioner Chacon – YES; Commissioner Gross – YES; Commissioner Harris – YES; Chair Bajema – YES; Commissioner Armijo – YES; Commissioner Glendenning – YES; Commissioner Carter – YES; Commissioner Salazar – YES; Commissioner Temchin – YES; Commissioner Velasquez – YES

With unanimous consent, this motion is approved.

5. Public Comment

There was no public comment.

6. New Business

a. Updates From the Chair (Chair Bajema)

Summary:

- This marks the third meeting of the calendar year, fulfilling the Commission's statutory meeting requirements.
- In the absence of Commissioner Davidson, Chair Bajema will provide the Legislative Subcommittee update later in the meeting.
- The Commission currently has \$225,000 in appropriated funds from the state legislature remaining. Members are encouraged to prioritize discussions on funding allocation, including potential uses such as signage, contracting, or nonprofit support.

- Emphasized that demonstrating effective use of current funds will strengthen the case for future appropriations, especially as future phases may require more resources.
- Expressed appreciation to all Commissioners for their participation, including Commissioner Velasquez, who is attending virtually.

b. Guest Speaker: Brad Higdon, Bureau of Land Management (BLM)

Summary:

- Mr. Higdon shared his personal background with trails and how it shaped his values and career in recreation planning.
- Emphasized the need to connect youth to nature through accessible, local trails—especially for underserved communities.
- Highlights the importance of culturally respectful trail development, including collaboration with tribal communities.
- Mr. Higdon quotes *The Blueprint for 21st Century Outdoor Recreation*: “The Bureau believes that all visitors should be able to realize mental, physical, and spiritual benefits from public lands”, and states that he has adopted this as a mantra for the management of public lands
- Mentions that the Enchanted Circle Trail Association's *Regional Trail Plan* has become a standard for good trail planning in the area and that it speaks to the idea of connecting youth to trails. He reads: “Trails can give people a sense of place and share community identity and pride. Trails can help celebrate local heritage and preserve and unique the unique features that make a community special. Trails play a role in responsibility and responsibly guiding visitors away from sensitive habitat areas and vulnerable cultural sites. Trails are an excellent way for residents to express the local character and culture of their area. They can provide a tremendous sense of place, especially trail corridors with historical and cultural significance.”
- Mr. Higdon paraphrases representative Teresa Fernández: “When you experience awe, you’re a kinder person”, and closes by affirming BLM’s commitment to partnership and support for the Rio Grande Trail

Commissioner Temchin: What can we do, and what can the commission do to voice our concern about the direction of all these withdrawals and rescinding acts that put much of this federal land at risk?

Brad Higdon: We already have discretion, authority, and a streamlined process to dispose of and acquire public lands.

Commissioner Temchin: Does a phone call or letter from citizens or organizations matter against the direction of the executive branch of the federal government, or is it a waste of time?

Brad Higdon: Every voice matters. All comments feed the BLM's perspective about how the public appreciates and uses public lands.

c. Subcommittee Reports

i. Tribal Subcommittee (Commissioner Chacon)

1. Meetings with San Felipe Pueblo, San Ildefonso Pueblo

Summary:

- Tribes were not involved in the original Rio Grande Trail planning, and many did not request the trail; this lack of early engagement continues to affect trust and participation.
- Tribal views on water are deeply spiritual and cultural, often conflicting with the idea of recreational use by non-tribal members.
- The Tribal Subcommittee is actively working to improve outreach and address concerns around sovereignty, cultural site protection, and meaningful involvement in planning.
- Several Pueblos, including San Felipe and Sandia, have raised concerns about proposed trail alignments being too close to sacred or culturally significant areas.
- There is growing support for restructuring the Commission to include more representation from Pueblos along the Rio Grande, who have legal and cultural primacy over several river stretches.
- Suggested next steps include partnering with tribal-serving nonprofits, attending broad tribal convenings, and continuing and expanding outreach to Pueblos to foster trust and engagement.
- Acknowledges that meaningful participation will take time and persistence, and that respectful, long-term relationship-building is essential to success. We need stronger structural commitments to tribal engagement.

Chair Bajema: It may be worth following up with Nambé Pueblo. A non-tribal member who oversees the Pueblo's economic development expressed that they were interested in developing more outdoor recreation opportunities.

Commissioner Salazar: Has there been difficulty due to the often-changing Pueblo leadership?

Commissioner Chacon: That is not a big impediment to this project, but you're correct that leadership terms often vary. The tribal council doesn't change quite as often.

Commissioner Temchin: Can the tribal subcommittee better map out where cultural site issues are, and if those issues are "fatal" or can be worked around? Can Pland or Carl Colonius help map communicate where cultural site conflicts are?

Commissioner Carter: Planning actions on public lands typically follows the NEPA process, which evaluates cultural, biological, and other resources. Having access to cultural data or involving Tribal Historic Preservation Officers (THPOs) during on-the-ground planning helps streamline trail alignment and ensures respectful land use. A framework developed by the U.S. Forest Service helps outline informal tribal engagement and encourages respectful collaboration.

Chair Bajema: A representative present at the Water and Natural Resources Interim Committee requested that we follow up with Santa Ana and Sandia Pueblo regarding recent trail alignment changes made in response to their concerns. Specifically, the rerouting of the trail away from areas near the Rio Grande and removing the segment through the Sandia Mountains.

ii. Alignment Subcommittee (Commissioner Carter)

1. Trail Segment Prioritization

Summary:

- The Alignment Subcommittee has been meeting biweekly to confirm, clean up, and refine the existing alignment, establish trail designation priorities, and coordinate with partners after the hiatus.
- Over 30 miles of existing trail were designated this year, with 9+ more miles pending—a significant increase from the previous total of ~90 miles.
- Focus remains on designating existing trails first, refining the application process, and addressing "low-hanging fruit".
- A key new segment is proposed for designation in the Taos area through the Rio Grande del Norte National Monument.
- Nearly 300 miles of informal trail along irrigation districts is being explored for future designation. There has been progress in conversations with these irrigation districts.
- Community outreach and engagement with tribal and local partners are planned to identify and refine potential new routes.
- How RGT signage can be incorporated into existing land manager signage is being discussed.
- Next steps include further implementation and finalization of signage and the review of the signage package, prioritization of new segments, and securing support for trail development and stewardship.

2. New Trail Segment Considerations

a. Santa Fe to Taos connectivity: scope of engagement

3. Trail Segment Designation

a. Horsethief Mesa Trail, Taos County

Brad Higdon (Summary):

- The Horsethief Mesa Trail has been officially recognized since the 2012 land use plan, though it had existed for over a decade prior.
- A travel management plan was developed 5–6 years ago due to increased recreational use and route proliferation near residential areas.
- The trail is reaffirmed as an important recreational asset in both the travel plan and the recent Rio Grande del Norte National Monument plan.
- It is considered a strong candidate ("low-hanging fruit") for inclusion in the Rio Grande Trail, especially as it is already a well-established and well-loved trail.
- NEPA and public engagement processes have already been completed for this trail.
- Future realignments may be needed to address changing wildlife patterns and protect cultural sites.
- The BLM supports the trails' designation and is committed to ongoing management.

Chair Bajema: Can you talk about the strategy for making the descent into the gorge from the canyon rim?

Brad Higdon: All over the landscape, there are historic trails, whether they're sheep herder trails, ancient trails, etc. These trails contain features that can be utilized as part of the route finding for the RGT. Natural traversable features exist that can be taken advantage of.

Chair Bajema: I would like to emphasize how strongly this segment aligns with the vision of the Rio Grande Trail. It doesn't get more ideal than this. This is a great alignment and a great opportunity to advance the vision and the mission of the trail.

Chair Bajema requested a motion to vote for the approval to designate the Horsethief Mesa Trail as part of the Rio Grande Trail

Commissioner Harris made a motion.

Commissioner Carter seconded the motion.

Roll Call Vote:

Commissioner Chacon – YES; Commissioner Gross – YES; Commissioner Harris – YES; Chair Bajema – YES; Commissioner Armijo – YES; Commissioner Glendenning – YES; Commissioner Carter – YES; Commissioner Salazar – YES; Commissioner Temchin – YES; Commissioner Velasquez – YES

With unanimous consent, this motion is approved.

b. Camino Real: Santa Fe River to Camino de Rey Road

Dan Majewski (Summary):

- The proposed trail segment in Santa Fe connects the Santa Fe River Trail to Camino de Rey Road and is part of the Camino Real Trail.
- Original alignment toward San Ildefonso Pueblo was removed due to it being a dead-end and not viable for a continuous route.
- The new segment is an existing paved trail that naturally fits into the Rio Grande Trail network.
- The goal is to eventually connect Caja del Rio to the greater Santa Fe area; future meetings will address alignment details.
- The City of Santa Fe provided a letter of support, and Santa Fe County passed a resolution backing the trail's designation.

Chair Bajema requested a motion to vote for the approval to designate the Santa Fe River to Camino de Rey Road portion of the Camino Real as part of the Rio Grande Trail

Commissioner Armijo made a motion.

Commissioner Harris seconded the motion.

Roll Call Vote:

Commissioner Chacon – YES; Commissioner Gross – YES; Commissioner Harris – YES

Chair Bajema – YES; Commissioner Armijo – YES; Commissioner Glendenning – YES; Commissioner Carter – YES; Commissioner Salazar – YES; Commissioner Temchin – YES; Commissioner Velasquez – YES

With unanimous consent, this motion is approved.

4. Trail Segment Updates, Taos County

- a. Bridge to Bridge (BLM)***
- b. John Dunn (BLM)***
- c. Horsethief Connector (BLM)***
- d. Garrapata Canyon (USFS)***

5. Administrative Documents

- a. Revised Designation Application***
- b. Revised Realignment Application***
- c. Revised Letter of Support***

Dan Majewski (Summary):

- The application formats have been updated to be more intuitive. They now use more checkboxes to highlight key trail attributes like access, user groups, surfacing, accessibility, and difficulty.
- Narrative sections are still included, but the new format aims to make trail details clearer for both applicants and commissioners.
- The goal is to improve understanding and decision-making during trail segment reviews and approvals.

Chair Bajema requested a motion to vote for the approval of all three revised administrative documents: The Designation Application, Realignment Application, and Letter of Support

Commissioner Armijo made a motion.

Commissioner Chacon seconded the motion.

Roll Call Vote:

Commissioner Chacon – YES; Commissioner Gross – YES; Commissioner Harris – YES; Chair Bajema – YES; Commissioner Armijo – YES; Commissioner Glendenning – YES; Commissioner Carter – YES; Commissioner Salazar – YES; Commissioner Temchin – YES; Commissioner Velasquez – YES

iii. Legislative Committee (Commissioner Davidson was absent; Chair Bajema led this update)

1. Update on proposed legislation

2. Status of Project Management Planning Initiative

Commissioner Temchin (Summary):

- The Rio Grande Trail Commission has \$225,000 in state funding for FY 2026 and is responsible for managing and reporting its use efficiently and transparently.
- A Program Management Plan (PgMP) is being proposed to organize and track how funds are used across subcommittees.
- The PMP will include five key components for each subcommittee:
 - Scope of work
 - Schedule
 - Performance/Deliverables
 - Cost Estimate
 - Challenges & Risk

- Templates have been developed in Word format to keep input simple (100 words or less per section) and consistent across subcommittees. Examples and sample content have been created to demonstrate how to fill out the templates.
- The PgMP is designed to be concise, measurable, and adaptable, with potential for quarterly or semiannual updates.

Chair Bajema: It would be valuable if all Subcommittees could complete this exercise before the next commission meeting in January.

Commissioner Temchin: I am available to provide an editing and formatting service for all submissions so that the RGTC has the appearance of being one unified whole.

Commissioner Glendenning: Mr. Chair, does this help you meet your requirements for reporting back to the legislature?

Chair Bajema: Yes, it is useful to show how we've spent the money and prove that we've spent it in an effective way so that we can make a good case to receive more funding in the future.

Commissioner Glendenning: Should this template include a section for additional needs then so we can better make our case for future funding?

Chair Bajema: Yes

Commissioner Temchin: We can display our need for future funding in the section titled "Challenges", where we can detail all that we could do with an increased budget.

Chair Bajema – Proposed Amendment to State Trail Systems Act (Summary):

- Special districts (Middle Rio Grande Conservancy District - MRGCD, Elephant Butte Irrigation District - EBID) face serious liability concerns over allowing recreation on levee roads. People already use levee roads to recreate, and when injuries occur, insurance carriers force settlements.
- There is an unclear liability framework since recreation isn't part of special districts' statutory mission.
- Proposing to amend the limited liability statute within the State Trail System Act to explicitly cover special districts (and possibly state/federal entities).
- Current law provides liability protection for private landowners granting easements, but case law excludes special districts from this protection. The amendment would supersede that case law, including special districts as "landowners" for liability limitation purposes.
- Success would "unlock" roughly 300 miles of trail south of Albuquerque.
- Similar efforts have been attempted for a decade but have faced resistance.

- There is a chance these changes could instead be made by rule and that the Secretary could promulgate new rules within the State Trail Systems Act, but this is currently unclear.

iv. Non-Profit subcommittee (Commissioner Gross)

v. Proposal to use RGT Office funding to hire a contractor to move the NPO formation forward

Summary:

- A nonprofit would provide consistency in work on the RGT as well as consistency in fundraising. The non-profit can undertake much of the responsibility of contracting, developing community trail programs, trail maintenance, and youth engagement.
- The scope of work for the nonprofit subcommittee calls for producing a blueprint report for creating the nonprofit, which would include a thorough public engagement process to raise awareness, gather input, and identify potential board members and partners.
- A contractor would then help facilitate board formation, present the report, invite members, and seat the board for its first meeting. The nonprofit will ultimately be autonomous but guided by Commission input. This contract would be found through a bidding process.
- An MOU between the Commission, the nonprofit, and major partners like EMNRD and ORD would help guide the nonprofit and provide predictability. Funding agreements from the Rio Grande Trail Office could provide further cohesion.

Chair Bajema: How was the amount of \$100,000 decided as the initial contract amount?

Commissioner Gross: \$100,000 would be a “not to exceed amount”. A better understanding of the real cost could be found when looking over contractors’ competitive bids on the role.

Commissioner Temchin: Would this NPO have a direct funding source in the Rio Grande Trail Commission, or would it apply for grants?

Commissioner Gross: Funding from the Rio Grande Trail office would be a good idea to help the organization get off the ground in FY27, but in the future, they will also be applying for grants as a separate entity.

Chair Bajema: Mr. Colonius, in your professional opinion, is \$100,000 an appropriate sum of money for this scope of work?

Carl Colonius: I hope we receive bids significantly below that amount.

Commissioner Harris: It would be good to get the input of legal minds in ORD and in State Parks about how contracting would work, or how the anti-donation clause would impact the formation and the work of the organization.

Commissioner Carter: To set expectations realistically, getting a signed MOU with all these governmental entities could take much longer than six months. The CDT coalition has an MOU, and it took years. A draft MOU would be more appropriate at this time.

Commissioner Temchin: The subcommittee emphasized that the five-month timeline requires extensive outreach beyond landowners, including state agencies, local groups, and existing nonprofits, which will take significant time and effort. To succeed, the project will need a well-funded outreach program and likely professional consultants who already understand New Mexico's networks, helping to quickly identify the right partners and contributors.

Commissioner Glendenning: I suggest using an on-call contract structure to give EMNRD flexibility in procurement. This approach allows issuing task orders for specific items and the ability to add new tasks later with agreed-upon quotes, making it easier to adjust the scope of work without being locked into a rigid contract.

d. Miscellaneous

i. Signage Development

- 1. Tribal engagement***
- 2. Signage languages***
- 3. Strategies for applying RGT signage to existing trail signs***
- 4. Interim low-cost signage strategy ideation***

Commissioner Gross: Are we anticipating a request to the commission to expend funding this year to start producing signage?

Dan Majewski: We hope that by providing this guidance, it gives you all the opportunity to do exactly that. If the commission can provide feedback on this signage plan, we can finalize it and create specific sign designs. Then we might be able to produce signage ideally by the end of next June.

Commissioner Armijo: Mr. Majewski, can you clarify the timeline to get revisions and updates on this signage plan? I would love to see some of the already designated areas planned for signage fabrication and installation.

Dan Majewski: We are finishing our last round of feedback with the commission and with our federal partners. We are open to the proposal of a timeline.

Commissioner Carter: The sign standards should better address how and where signage is installed in accordance with the relevant land manager's standards. Federal standards can be extensive. Also, the RGT logo is currently upside down and is not in accordance with the family of national scenic and historic recreation trails.

Commissioner Temchin: I propose we develop a priority list for segments we have already designated and ask for the funding to create signage on them in FY26. If that is reasonable, it should be included in one of the plans toward the 225,000 legislative grant.

Chair Bajema: Budget breakdown of the \$225,000 as of now: ~\$20,000 obligated to commissioner reimbursements and promotional materials, ~\$60,000 obligated to Pland in an administrative support contract, and \$100,000 allocated for the nonprofit. So that leaves about \$45,000, which there has been some talk of going to contract a YCC grant to connect the final area in Taos County, or that money could go to signage. It might be the most appropriate use of funds to identify how much money we would need to put up signage through all the existing designated routes and ask for that money in the upcoming budget session.

Commissioner Temchin: I propose a pilot signage program where we commit to fully installing signage on a portion of the trail to solicit public input and get a better understanding of signage costs.

7. Announcement of Next Meetings

a. Fri, Jan 16, 2026 – Albuquerque

b. Fri, April 3, 2026 – Las Cruces

Commissioner Carter: We need to get the dates and locations of these next meetings onto our website and send them out in other ways as soon as possible to solicit maximum public input at the meetings.

Chair Bajema: There will be an internal deadline of November 15 for Subcommittees to submit their project management plans to the legislative subcommittee for a final deadline of December 1.

8. Public Comment

9. Adjournment

Chair Bajema: The 23rd Rio Grande Trail Commission meeting is hereby adjourned.

ATTACHMENT B: BOSQUE TRAIL-TIJERAS CANYON CONNECTION DESIGNATION APPLICATION





TRAIL SEGMENT REALIGNMENT APPLICATION

RGT Segments:
Bosque Trail-Tijeras Canyon Connection

Date of Submittal: 01/16/2026
Submittal to: RGT Commission

Approval Date (RGT Commission):

Applicant Information for Proposed New Alignment

Name/Title: City of Albuquerque, Open Space Division, Parks and Recreation Department

Name/Title: City of Albuquerque, Department of Municipal Development

Email:

Land Owner / Land Manager (Check which applies) / Other

If additional applicants:

Name/Title:

Email:

Land Owner / Land Manager (Check which applies) / Other

Accessibility

Public Access:

Yes / No / With permit

User Groups (if not open to all the below groups, note alternate accommodation for those groups in the "Connectivity" section of the application):

Hikers / Bikers / Equestrians

Surfacing:

Paved / Unpaved / Blue (water)

Universal Design/ADA Accessible:

Yes / No / Partial

Difficulty:

Easy (mostly flat & smooth) / Moderate (some elevation change) /

Difficult (significant elevation change)

Traffic Flow: Utilizes multi-use trails and low-speed, low-volume streets.



TRAIL SEGMENT REALIGNMENT APPLICATION

RGT Segments:
Bosque Trail-Tijeras Canyon Connection

Barriers: Occasional crossings of high-speed/high-volume roads could lead to potential user safety concerns and obstacles.

Signage: Some signage exists on sections of the existing trail, but additional wayfinding information will be needed to provide the trail with a more seamless pedestrian connection between the Bosque Trail and Tijeras Canyon.

Features: Views of the Sandia Mountains; connection to the Bosque River Trail; connection to key regional destinations, including parks and Uptown.

Designation Type

Proposed / Full Designation of through trail / Full Designation of spur trail (Check which applies)

(Note: Proposed Designation is for proposed future trail segments; Full Designation is for existing/constructed trail segments.)

RGT Segment for Designation (for future identification purposes)

| County | Jurisdiction | Segments | Existing Facility | Existing Facility Name | Miles | Application Type |
|------------|--------------|----------|-------------------|--|-------|--------------------------------|
| Bernalillo | CABQ | BN-05-A | Multiuse trail | Multiple trails and on-street facilities | 14.2 | Realignment & full designation |
| | | | | Total | | |

Location/Description of Current Alignment

Please describe the boundaries, extent, and relative location of the trail segment and how it relates to the Rio Grande Trail Corridor.

This segment of the proposed Rio Grande Trail (RGT) passes through the City of Albuquerque, linking Tijeras Canyon with the Bosque Trail. It begins at the intersection of I-40 and Tramway Blvd, and travels west, utilizing the I-40 Trail between Tramway and Eubank. Beyond Eubank, the route utilizes on-street



TRAIL SEGMENT REALIGNMENT APPLICATION

RGT Segments:
Bosque Trail-Tijeras Canyon Connection

facilities such as Zuni, Lead, and Coal. The route incorporates existing bike lanes and multi-use paths along these corridors.

Location/Description of Proposed New Alignment

Please describe the boundaries, extent, and relative location of the proposed new alignment of this trail segment and how it relates to the Rio Grande Trail Corridor.

The proposed alignment will shift approximately 1.5 miles north to better leverage existing multi-use trails and create a more seamless connection between Tijeras Canyon and the Bosque Trail. While this new alignment still uses on-street bicycle lanes along corridors such as Indian School, it utilizes trails for over half of the route. This is a much higher percentage than the previous alignment. Trails to be utilized include Paseo de las Montañas, Embudo Arroyo, and Tramway. By using trails more than on-street facilities, this realignment maximizes accessibility and safety while still offering a relatively direct connection between the Bosque Trail and Tijeras Canyon.

Reason for New Alignment

Please describe the reasons for realigning this trail segment.

This new alignment makes greater use of existing trails and paths instead of on-street bicycle facilities on corridors that often have narrow sidewalks and generally inadequate pedestrian infrastructure. The new alignment greatly improves the accessibility and safety of this important connection.

RGT Vision

How does this segment support the vision of the Rio Grande Trail?

This realignment advances the RGT vision by improving access to the Rio Grande for residents of Albuquerque and Tijeras. It creates a vital connection across traffic-heavy corridors that currently discourage pedestrian travel, encouraging more people to reach the river using active transportation. Additionally, the realignment maximizes the use of existing trails and paths within the city, aligning with the RGT's commitment to leverage existing facilities and infrastructure.

Ownership

Is the segment in public ownership, or are necessary easements or agreements in place? If not, describe the plan for obtaining and/or managing trail right-of-way.



TRAIL SEGMENT REALIGNMENT APPLICATION

RGT Segments:
Bosque Trail-Tijeras Canyon Connection

This trail segment is located within the City of Albuquerque's limits, providing them full jurisdiction of the segment.

Public Support

Please indicate whether there has been any public outreach and whether there are any groups, organizations, or individuals that have demonstrated support for this trail segment.

Public support for this segment is evident in the strong and consistent use of the existing trail sections that will be incorporated into the new alignment. The current paths and bike lanes along the corridor are already popular for both daily travel and recreational activity. The City of Albuquerque's continuous improvement and maintenance of these segments reinforces support for these trails as an essential community resource in Albuquerque.

Connectivity

Describe how this trail segment would provide continuity and/or connectivity within the overall Rio Grande Trail system.

Realigning this trail designation would make use of several existing bike and pedestrian facilities that already form a continuous route between Tijeras Canyon and the Bosque. By formally designating this alignment, the corridor would become a clearly identified, end-to-end connection between the two areas, unified through consistent signage, improved wayfinding, and a more seamless experience for all users traveling along the trail.

Accessibility

What level of access/accessibility is anticipated for the general public and different user groups?

The trail will offer proper accessibility through the inclusion of level, stable surfaces; designated bike lanes; and multi-use paths that accommodate a wide range of user groups. Access for all types of users will be further supported through the application of universal design principles, such as clear and consistent wayfinding, accessible trailheads, adequate turning space, and features that support individuals with mobility, visual, or sensory challenges. Together, these elements will ensure the segment is welcoming, safe, and usable for the entire community.

Impact Studies



TRAIL SEGMENT REALIGNMENT APPLICATION

RGT Segments:
Bosque Trail-Tijeras Canyon Connection

Have environmental impact studies and/or cultural surveys been conducted to understand the potential impacts of trail designation? How may the impacts support existing efforts, community visions, or regional planning? (Required for full designation, optional for proposed designation)

This realignment exclusively utilizes existing trails, on-street bicycle facilities, and other existing infrastructure. This infrastructure, which is in an urban environment, is already well utilized.

Capacity to Maintain

How will the trail segment be maintained, and by whom?

This trail segment exclusively falls within the jurisdiction of the City of Albuquerque. They will continue maintaining the facility.

Public Safety

Indicate how public safety will be addressed.

Public safety will be addressed through the implementation of ADA-compliant features, well-designed bike lanes, and properly delineated and marked trails and paths along the segment to eliminate the potential for user conflict. The Albuquerque Police Department is responsible for responding to public safety concerns along this corridor.

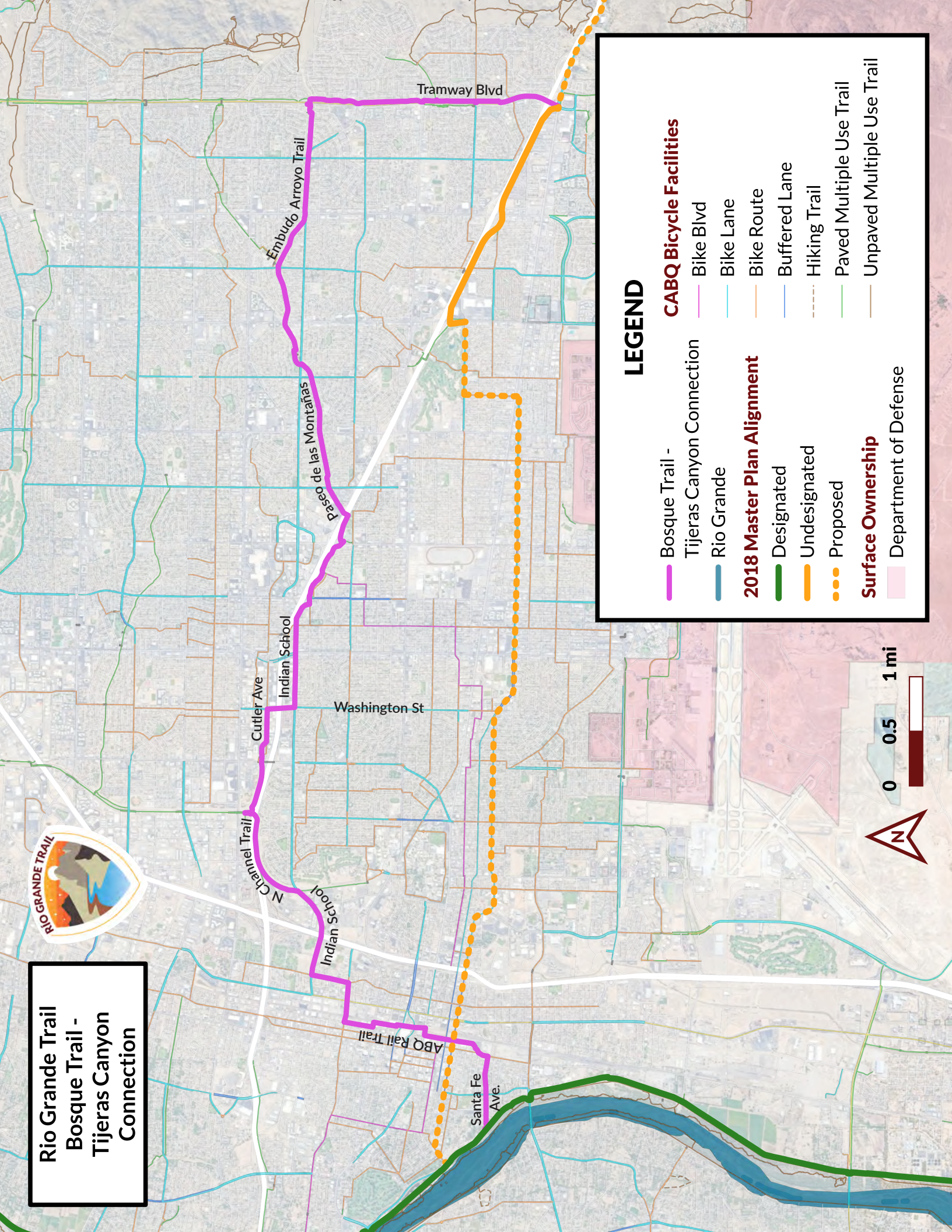
1. Additional Documentation

Please provide any supporting documentation that would help the Commission evaluate your request as a separate attachment. This could include maps of the proposed route for designation, letters of support, resolutions from the respective municipality or county, existing planning studies, easement documentation, pictures of the trail, etc.













ATTACHMENT C: MAP OF BOSQUE TRAIL-TIJERAS CANYON CONNECTION



**Rio Grande Trail
Bosque Trail -
Tijeras Canyon
Connection**



LEGEND

| | |
|---|--|
|  Bosque Trail - |  CABQ Bicycle Facilities |
|  Tijeras Canyon Connection |  Bike Blvd |
|  Rio Grande |  Bike Lane |
|  2018 Master Plan Alignment |  Bike Route |
|  Designated |  Buffered Lane |
|  Undesignated |  Hiking Trail |
|  Proposed |  Paved Multiple Use Trail |
|  Surface Ownership |  Unpaved Multiple Use Trail |
| |  Department of Defense |



ATTACHMENT D: NM-14 TIJERAS TO SAN ANTONITO DESIGNATION APPLICATION





TRAIL SEGMENT DESIGNATION PROCESS & APPLICATION

RGT Segments:
NM-14 Tijeras to San Antonito

Date of Submittal: 01/16/2026
Submittal to: RGT Commission

Approval Date (RGT Commission):

Applicant Information

Name/Title: New Mexico Department of Transportation (NMDOT)
Name/Title:

Email:

Land Owner / Land Manager (Check which applies) / Other

If additional applicants:

Name/Title:

Email:

Land Owner / Land Manager (Check which applies) / Other

Access

Public Access:

Yes / No / With permit

User Groups (if not open to all the below groups, note alternate accommodation for those groups in the "Connectivity" section of the application):

Hikers / Bikers / Equestrians

Surfacing:

Paved / Unpaved / Blue (water)

Universal Design/ADA Accessible:

Yes / No / Partial

Difficulty:

Easy (mostly flat & smooth) / Moderate (some elevation change) /

Difficult (significant elevation change)

Traffic Flow: Light traffic on Shared Use Path, Moderate to Heavy traffic on NM-14



TRAIL SEGMENT DESIGNATION PROCESS & APPLICATION

RGT Segments:
NM-14 Tijeras to San Antonio

Barriers: This section is currently isolated and not connected to other trails on either end. The southern start of the trail is challenging to access due to its proximity to Interstate 40.

Signage: There is some existing signage to indicate bicycle and pedestrian activity on the path.

Features: Paved Shared Use Pathway through scenic terrain on the east side of the Sandia Mountains

Designation Type

Proposed/ Full Designation of through trail / Full Designation of spur trail (Check which applies)

(Note: Proposed Designation is for proposed future trail segments; Full Designation is for existing/constructed trail segments.)

RGT Segment for Designation (for future identification purposes)

| County | Jurisdiction | Segments | Existing Facility | Existing Facility Name | Miles | Application Type |
|------------|--|----------|-------------------|------------------------|-------------|------------------|
| Bernalillo | Tijeras & unincorporated county (Cedar Crest, San Antonio) | SF-03-G | Shared Use Path | NM-14 Multiuse Trail | 5.74 | Full Designation |
| | | | | Total | 5.74 | |

Location/Description

Please describe the boundaries, extent, and relative location of the trail segment and how it relates to the Rio Grande Trail Corridor.

The NM-14 Shared Use Path, part of the Turquoise Trail Scenic Byway, runs along the East side of NM-14 from a few yards north of its intersection with I-40 in Tijeras to its intersection with the Sandia Crest Road/536 and Frost Road/306 in San Antonio.

This segment of the Rio Grande Trail Alignment is part of the larger through-route connection between



TRAIL SEGMENT DESIGNATION PROCESS & APPLICATION

RGT Segments:
NM-14 Tijeras to San Antonito

Central and Northern New Mexico. Due to opposition to the trail running along the river through tribal jurisdictions, the greater NM-14 corridor has been identified as an important link from the Rio Grande in Albuquerque to trail systems heading North to Santa Fe and south to Valencia County.

This is categorized as a Tier 1 facility on the [NMDOT Bike Plan Priority Network](#). Tier 1 routes are high priority for bikeways that provide critical intra-community and statewide connections between New Mexico's communities and for cross-state travel. Page 49 of the [NMDOT Bike Plan](#) notes that NM 14 is one of the many state highways that overlap with the proposed alignment of the Rio Grande Trail.

The 2023 average daily traffic (ADT) count data for this road segment mostly averaged between 8,000-14,000 vehicles per day. Traffic volumes are generally higher on the southern end, closer to Interstate 40, and generally decline as one goes further north towards San Antonito.

RGT Vision

How does this segment support the vision of the Rio Grande Trail?

Designating this segment will establish a key link between Tijeras and San Antonito, potential gateway communities that offer an important route around the Sandias to reconnect with the Rio Grande. This alignment continues a vital pathway that will ultimately enhance connectivity to the bosque, supporting the trail's mission to remain aligned with the river.

Ownership

Is the segment in public ownership, or are necessary easements or agreements in place? If not, describe the plan for obtaining and/or managing the trail right-of-way.

This segment of the trail is owned by the New Mexico Department of Transportation (NMDOT).

Public Support

Please indicate whether there has been any public outreach and whether there are any groups, organizations, or individuals that have demonstrated support for this trail segment.

There have been numerous conversations with trail-based stakeholders in the East Mountains, including Friends of the Sandia Mountains, the East Mountain Regional Trails Council, and the Turquoise Trail Regional Alliance. All have shared unanimous support for the designation of this trail.



TRAIL SEGMENT DESIGNATION PROCESS & APPLICATION

RGT Segments:
NM-14 Tijeras to San Antonito

Connectivity

Describe how this trail segment would provide continuity and/or connectivity within the overall Rio Grande Trail system.

This trail segment is part of an effort to route the Rio Grande Trail further from Sandia Pueblo and areas of cultural sensitivity nearby. As a longer segment of trail (5.74 mi), it also plays a crucial role in providing connectivity between Albuquerque to the West, Santa Fe to the North, and Valencia County to the South.

Impact Studies

Have environmental impact studies and/or cultural surveys been conducted to understand the potential impacts of trail designation? How may the impacts support existing efforts, community visions, or regional planning? (Required for full designation, optional for proposed designation)

This is an existing trail along an existing highway. Therefore, this facility has already received numerous studies and environmental reviews.

Capacity to Maintain

How will the trail segment be maintained, and by whom?

NMDOT will continue to maintain this segment.

Public Safety

Indicate how public safety will be addressed.

The Shared Use Path will rely on local law enforcement from the Bernalillo County Sheriff's Department.

Additional Documentation

Please provide any supporting documentation that would help the Commission evaluate your request as a separate attachment. This could include maps of the proposed route for designation, letters of support, resolutions from the respective municipality or county, existing planning studies, easement documentation, pictures of the trail, etc.

ATTACHMENT E: MAP OF NM-14 TIJERAS TO SAN ANTONITO





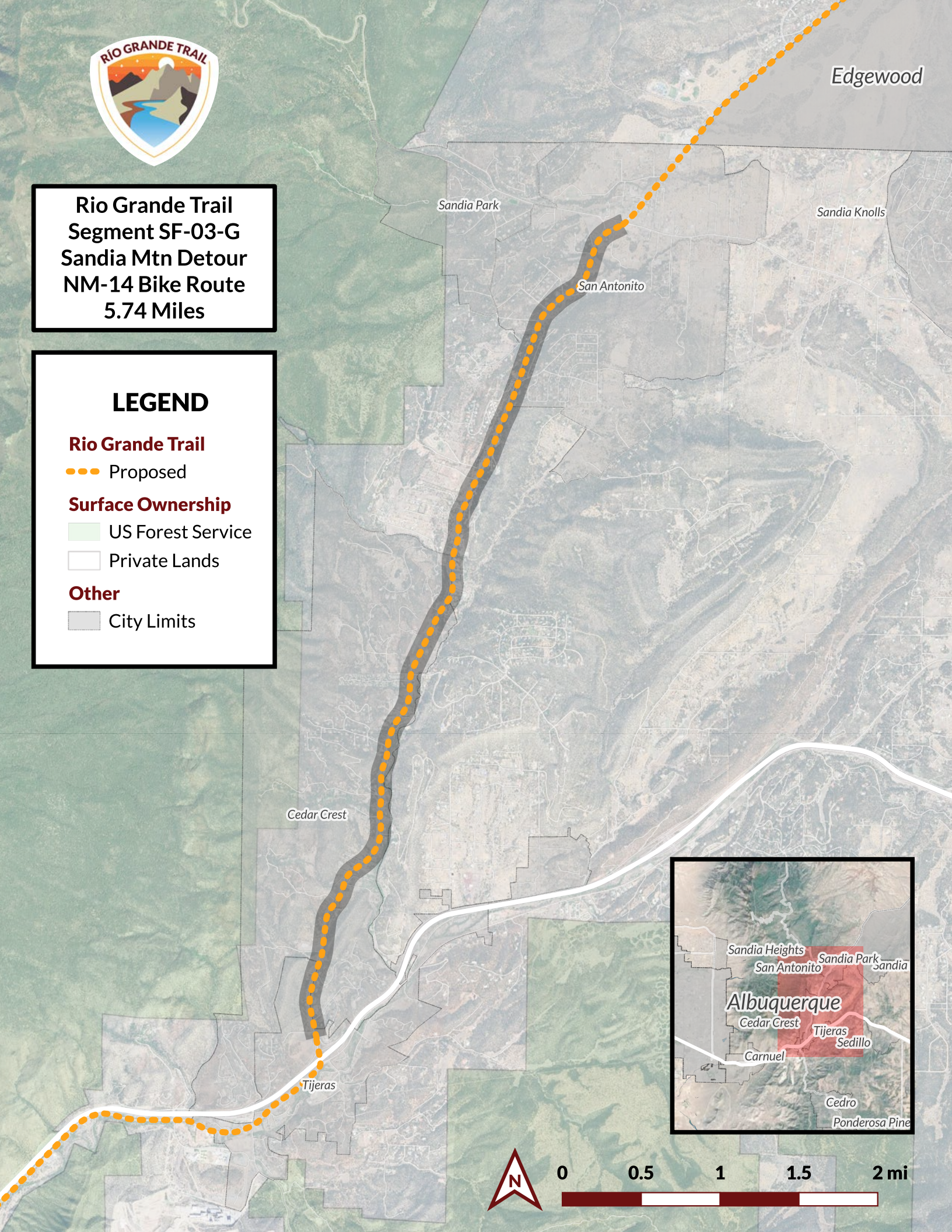
**Rio Grande Trail
Segment SF-03-G
Sandia Mtn Detour
NM-14 Bike Route
5.74 Miles**

LEGEND

Rio Grande Trail
●●● Proposed

Surface Ownership
■ US Forest Service
□ Private Lands

Other
■ City Limits



ATTACHMENT F: ABQ TO TIJERAS DESIGNATION APPLICATION





TRAIL SEGMENT DESIGNATION APPLICATION

RGT Segments:
Albuquerque to Tijeras

Date of Submittal: 01/16/2026
Submittal to: RGT Commission

Approval Date (RGT Commission):

Applicant Information

Name/Title: New Mexico Department of Transportation (NMDOT)
Name/Title:

Email:

Land Owner / Land Manager (Check which applies) / Other

If additional applicants:

Name/Title:

Email:

Land Owner / Land Manager (Check which applies) / Other

Access

Public Access:

Yes / No / With permit

User Groups (if not open to all the below groups, note alternate accommodation for those groups in the "Connectivity" section of the application):

Hikers / Bikers / Equestrians

Surfacing:

Paved / Unpaved / Blue (water)

Universal Design/ADA Accessible:

Yes / No / Partial

Difficulty:

Easy (mostly flat & smooth) / Moderate (some elevation change) /
 Difficult (significant elevation change)

Traffic Flow: Located along a high-traffic, high-activity corridor. Bike lane located within the shoulder of the Highway.



TRAIL SEGMENT DESIGNATION APPLICATION

RGT Segments:
Albuquerque to Tijeras

Barriers: Limited separation between vehicular traffic and cyclists on the shoulder may create safety concerns. Additionally, the current infrastructure only supports bicycle users.

Signage: The corridor includes some signage that provides directional guidance.

Features: The segment is a direct link between Albuquerque and Tijeras. Scenic views of the Sandia and Manzano Mountains enhance the corridor and create a visually appealing experience for users.

Designation Type

Proposed / Full Designation of through trail / Full Designation of spur trail (Check which applies)

(Note: Proposed Designation is for proposed future trail segments; Full Designation is for existing/constructed trail segments.)

RGT Segment for Designation (for future identification purposes)

| County | Jurisdiction | Segments | Existing Facility | Existing Facility Name | Miles | Application Type |
|------------|---|----------|-------------------|------------------------|-------------|------------------|
| Bernalillo | Tijeras and unincorporated county (Carnuel) | BN-05-F | Wide shoulders | NM 333/Old Route 66 | 7.60 | Designation |
| | | | | Total | 7.60 | |

Location/Description of Current Alignment

Please describe the boundaries, extent, and relative location of the trail segment and how it relates to the Rio Grande Trail Corridor.

This segment of the Rio Grande Trail provides direct connectivity between Albuquerque and Tijeras via an existing bike corridor along Highway 333/Old Route 66. It follows the Tijeras Creek Cultural Corridor and uses a designated shoulder for bicycle travel between the two communities. Classified as a Tier 1 corridor by the New Mexico Department of Transportation, it is considered a high-use, high-priority route for future improvements. While the segment does not formally accommodate hiking or equestrian use, the opposite side of the corridor is informally used for these activities.



TRAIL SEGMENT DESIGNATION APPLICATION

RGT Segments:
Albuquerque to Tijeras

This is categorized as a Tier 1 facility in the [NMDOT Bike Plan Priority Network](#). Tier 1 routes are high priority for bikeways that provide critical intra-community and statewide connections between New Mexico's communities and for cross-state travel. Page 49 of the [NMDOT Bike Plan](#) notes that NM 333 is one of the many state highways that overlap with the proposed alignment of the Rio Grande Trail.

The 2023 average daily traffic (ADT) count data for this road segment mostly averaged between 5,000-6,000 vehicles per day. On the western end, where this segment becomes more urban, counts were as high as 14,403, and the eastern end, in Tijeras, had counts as high as 12,379.

RGT Vision

How does this segment support the vision of the Rio Grande Trail?

Connecting communities to the Rio Grande is a core goal of the Rio Grande Trail system. Establishing a link from Tijeras to Albuquerque will connect East Mountain communities to the river and expand route options for the community. This access aligns with the trail's mission of enabling more people to reach the river by bike.

Ownership

Is the segment in public ownership, or are necessary easements or agreements in place? If not, describe the plan for obtaining and/or managing trail right-of-way.

NMDOT and the Village of Tijeras share jurisdiction over this trail segment. Coordinated efforts will be needed to formalize its designation and safeguard sensitive properties near Tijeras Creek as the segment experiences higher levels of use.

Public Support

Please indicate whether there has been any public outreach and whether there are any groups, organizations, or individuals that have demonstrated support for this trail segment.

Public support for this segment can be seen through the existing high usage of the bike shoulder for through traffic. The current corridor serves as an important connector between the two spaces for bikers and sees a steady concentration of use throughout the year. NMDOT designation of the corridor as Tier 1 reinforces the high use that this segment sees as well as its importance to the broader statewide trail network.



TRAIL SEGMENT DESIGNATION APPLICATION

RGT Segments:
Albuquerque to Tijeras

Connectivity

Describe how this trail segment would provide continuity and/or connectivity within the overall Rio Grande Trail system.

Designating this segment would establish a key connection between the City of Albuquerque and the Village of Tijeras, a spur community that currently lacks direct trail access to the Rio Grande. This designation would create a designated route for cyclists to reach Albuquerque's extensive trail network, providing direct access to the Rio Grande and the broader RGT system.

Accessibility

What level of access/accessibility is anticipated for the general public and different user groups?

Public accessibility is limited because the segment runs along a highway shoulder and is designated only for bicycle use. Restricted user groups and the absence of a protected bike lane or separated path also reduce safety. Some signage is present, offering adequate wayfinding for travelers.

Impact Studies

Have environmental impact studies and/or cultural surveys been conducted to understand the potential impacts of trail designation? How may the impacts support existing efforts, community visions, or regional planning? (Required for full designation, optional for proposed designation)

The site runs through the Tijeras Cultural Corridor, a protected area along the Tijeras Watershed notable for its local history and diverse landscapes. Preserving this space is a priority for both the City of Albuquerque Open Space, which manages the corridor, and the community, which values its cultural significance. Bernalillo County and the Village of Tijeras are also involved in this initiative to protect and highlight the ecological and cultural value of this historic waterway. The Tijeras Creek Cultural Corridor Plan provides safeguards for the area as development continues, facilitating projects such as the Tijeras Bio-Zone Education Center while protecting the corridor. Designation of this route as RGT will support the existing efforts to protect and increase recreational access to this corridor.

Capacity to Maintain

How will the trail segment be maintained, and by whom?



TRAIL SEGMENT DESIGNATION APPLICATION

RGT Segments:
Albuquerque to Tijeras

NMDOT will continue to maintain this segment.

Public Safety

Indicate how public safety will be addressed.

The Bernalillo County Sheriff is responsible for this jurisdiction. Safety for users can be enhanced through design improvements that better separate bikers from vehicular traffic. Designation of this corridor can support efforts to prioritize this area for future NMDOT upgrades in alignment with their 2018 Bike Plan.

1. Additional Documentation

Please provide any supporting documentation that would help the Commission evaluate your request as a separate attachment. This could include maps of the proposed route for designation, letters of support, resolutions from the respective municipality or county, existing planning studies, easement documentation, pictures of the trail, etc.

ATTACHMENT G: MAP OF ABQ TO TIJERAS





**Rio Grande Trail
Segment BN-05-F
Sandia Mtn Detour
ABQ to Tijeras
7.60 Miles**

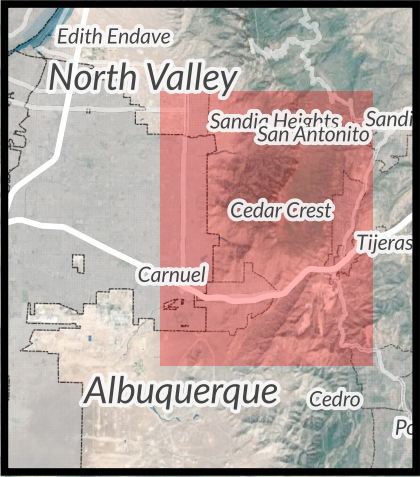
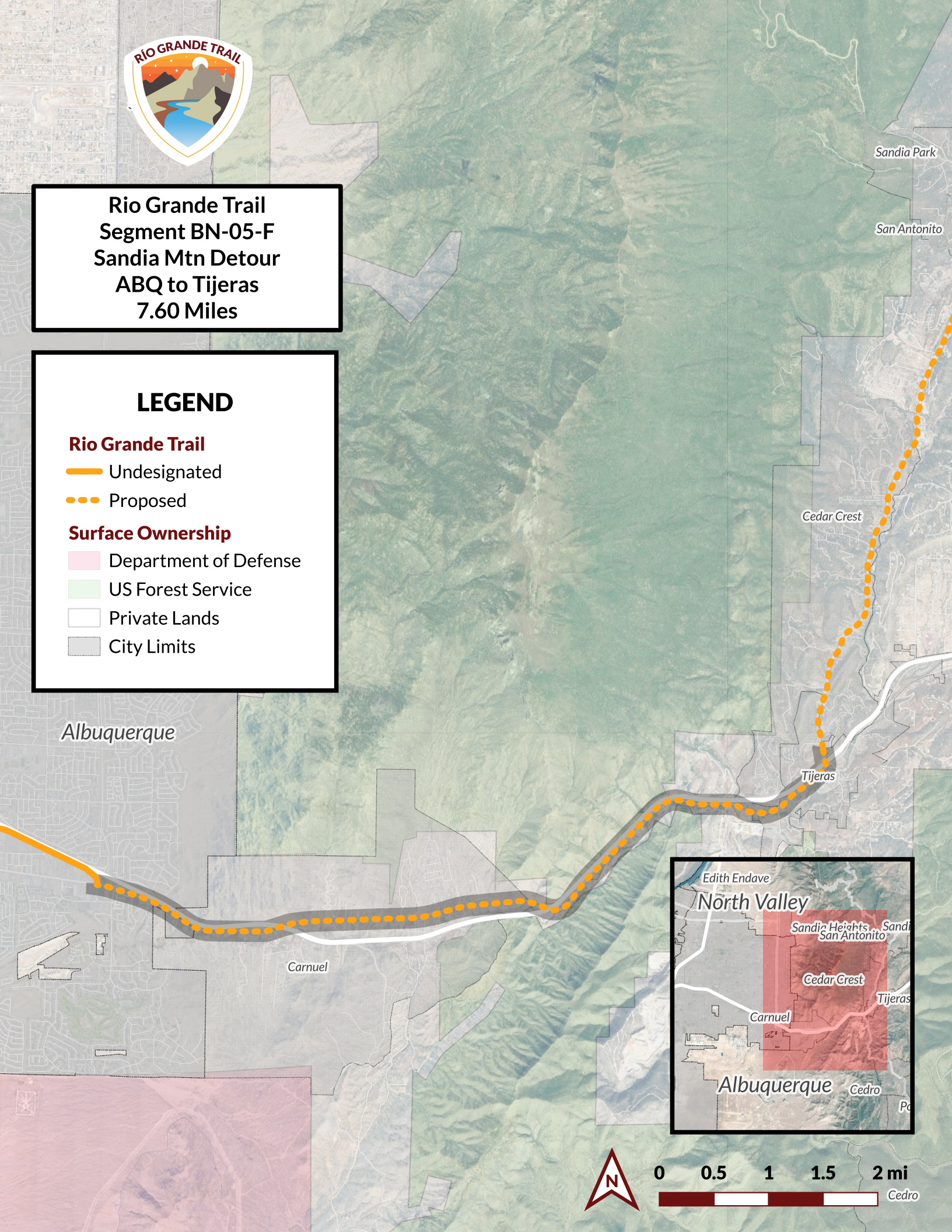
LEGEND

Rio Grande Trail

- Undesignated
- Proposed

Surface Ownership

- Department of Defense
- US Forest Service
- Private Lands
- City Limits



ATTACHMENT H: PROGRAM MANAGEMENT PLAN DRAFT



Pre-Final Working DRAFT



**OFFICE OF THE
RIO GRANDE TRAIL COMMISSION
FY 26 Program Management Plan**

December 15, 2025

OFFICE - RIO GRANDE TRAIL COMMISSION-FY 26 Program Management Plan

TABLE OF CONTENTS

| | |
|--|-----------|
| 1. VISION AND GOALS OF THE RGTC | 4 |
| 1.1 Vision | 4 |
| 1.2 Goals | 4 |
| 1.1.1 Collaboration..... | 4 |
| 1.1.2 Planning | 5 |
| 2. PURPOSE AND SCOPE OF THE OFFICE – RGTC | 6 |
| 2.1 Purpose | 6 |
| 2.2 Scope of Work | 6 |
| 2.2.1 Task #1: Develop resource capability and operational governance, processes and procedures..... | 6 |
| ▪ Activity 1.1: Identify New and Revitalize Working Groups | 6 |
| ▪ Activity 1.2: Develop And Commission Resource Capability..... | 7 |
| ▪ Activity 1.3: Compliance with EMNRD Standardized Governance, Processes And Procedures | 9 |
| ▪ Activity 1.4: Compliance With The Open Meetings Act | 9 |
| ▪ Activity 1.5: Implement Existing Trails Segment Designation and Approval Processes | 9 |
| 2.2.2 Task #2: Provide Management and Support to Subcommittees | 9 |
| 2.2.3 Task #3: Prepare Reports To The Governor And The Appropriate Interim Committees | 9 |
| 3. DEFINITION OF CHALLENGES AND/OR RISKS | 10 |
| 3.1 Primary Challenge #1: Tribal Considerations Banning Trail Development Through Its Lands | 10 |
| 3.2 Primary Challenge #2: Ambitions for the 2026, New Mexico Legislative Session – Limiting Liability of Trail Owners | 11 |
| 3.3 Primary Challenge #3: Startup Funding For A New Rio Grande Trail Non-Profit Organization | 11 |
| 4. FY 26 OFFICE- RGTC SCHEDULE OF PERFORMANCE | 11 |
| 5. FY 26 OFFICE- RGTC DELIVERABLES | 12 |
| 6. FY 26 OFFICE – RGTC BUDGET | 13 |

OFFICE - RIO GRANDE TRAIL COMMISSION-FY 26 Program Management Plan

FIGURES:

- 1. FY 26 Office – RGTC Collaborative Organization Structure7
- 2. Trails Segment Designation and Approval Work Flow Process10

TABLES:

- 1. FY 2026 Office – RGTC Commissioner Roles and Responsibilities8

ATTACHMENTS:

- A. FY 26 Tribal Subcommittee Management Plan14
- B. FY 26 Alignment Subcommittee Management Plan15
- C. FY 26 RGT Non-Profit Subcommittee Management Plan27
- D. FY 26 Legislative Subcommittee Management Plan34
- E. New Realignment Application Template41
- F. Trails Segments Designation Application Form45
- G. Agency/Stakeholder Letter Of Support Template50

OFFICE - RIO GRANDE TRAIL COMMISSION-FY 26 Program Management Plan

INTRODUCTION

The following discussions present and define the Office of The Rio Grande Trail Commission's (Office – RGTC) FY 26 Program Management Plan (PMP) to provide a value proposition and action plan to advance the vision and goals leading to the formation of the Rio Grande Trail. It is envisioned that the timely and efficient management and execution of this plan will provide immediate benefits to the people of New Mexico and aid in establishing the Rio Grande Trail (RGT) as a world-class recreational attraction.

1. VISION AND GOALS OF THE RGTC

1.1 Vision: In 2015, state legislation: The Rio Grande Trail Commission Act (HB 563)¹ [Section 1A](#), solidified New Mexico's vision of a 500-mile cross-state recreational trail and established the Rio Grande Trail Commission to oversee its development. As part of this master planning process, the Commission adopted the following vision statement:

“The Rio Grande Trail is New Mexico’s cross-state, recreational trail for hiking, biking, and horseback riding along the Rio Grande. Trail users explore, learn about, and connect with a tapestry of diverse natural habitats, rich history, striking landscapes, and vibrant communities. The trail contributes to cultural and environmental awareness, healthy lifestyles, spiritual growth, and economic prosperity for New Mexico and its visitors.”

1.2 Goals: The New Mexico Energy, Minerals and Natural Resources Department (EMNRD) commissioned the Rio Grande Trail Commission based on the HB563, and in partnership with New Mexico Department of Transportation (NMDOT), Federal Highway Administration (FHWA) and the State Trails System Act² to guide the development of trail alignment and overall vision of the trail. The goals of the plan are defined as follow:

- **1.2.1 Collaboration:** The RGT Master Plan calls for the following partnering, coordination and collaboration:
 - **Coordinate With El Camino Real Historic Trail:** “The commission shall collaborate and cooperate with the National Park Service’s historic trails project for the El Camino Real de Tierra Adentro National Historic Trail from Mexico to northern New Mexico when appropriate”
 - **Engage With Partner Agencies:** “consult with representatives of the following regarding issues within their jurisdiction in development of the Rio Grande trail: each of the conservancy or irrigation districts served by water in the Rio Grande; acequias, counties, land grants, municipalities, and Pueblos adjoining the Rio Grande”

¹ <https://www.nmlegis.gov/Legislation/Legislation?Chamber=H&LegType=B&LegNo=563&year=15>

² <https://nmonesource.com/nmos/nmsa/en/item/4390/index.do#a3>

OFFICE - RIO GRANDE TRAIL COMMISSION-FY 26 Program Management Plan

- **Engage With Partner Agencies:** “consult with representatives of the following regarding issues within their jurisdiction in development of the Rio Grande trail: each of the conservancy or irrigation districts served by water in the Rio Grande; acequias, counties, land grants, municipalities, and Pueblos adjoining the Rio Grande”
- **Seek Public Input On The Trail Route:** “prior to making any final decisions regarding trail designation, design and construction, hold public meetings to solicit public input and allow for a written comment period”; “actively engage the public in the planning process of the Rio Grande trail”.
- **1.1.2 Planning:** The planning process adheres to a clear set of principles established in the state law NMSA 1978 Section 9-5C-1³ retrieved on 11/03/2025 and consistent throughout every phase of the process. Planning will also provide inspiration and guidance for New Mexicans and trail users wanting to learn more about the trail vision and what it may mean for their community. The statute specifies:
 - **Ensure A Voluntary Process:** “only land that is expressly authorized by the owner, including Indian nations, tribes or Pueblos, for inclusion in the Rio Grande trail and not to be acquired by eminent domain”; “Eminent domain shall not be used to establish or construct the Rio Grande trail or features, facilities or enhancements associated with the trail.”
 - **Use Existing Trails Along The Rio Grande Corridor:** “to the extent feasible, select existing trails for the route of the Rio Grande trail”; “to the extent feasible, in the case of non- motorized existing trails, avoid widening these trails;”
 - **Minimize Environmental Impacts:** “ensure that any recommended designation, construction and use of the trail will minimize environmental impacts”
 - **Preserve Sensitive Habitats:** “endeavor to avoid areas of significant habitat value and ensure that any recommended designation, design, construction or use of the trail will minimize the impact on habitat”, and
 - **Prioritize Non-Motorized Use:** “in the case of new trails on public lands, construct the trails for non-motorized use; provided, however, that such trails may, but are not required to, be open to power-driven mobility devices for individuals with mobility impairments”

³ <https://nmonesource.com/nmos/nmsa/en/item/4357/index.do#9-5C-1>

OFFICE - RIO GRANDE TRAIL COMMISSION-FY 26 Program Management Plan

2. PURPOSE & SCOPE OF WORK FOR THE OFFICE – RGTC

2.1 Purpose: In order to achieve the goals defined above, EMNRD and the Commission created the Office of the Rio Grande Trail Commission to manage the appropriations granted by the State. The Office – RGTC provides management of funds, contract management, ensuring funds are appropriately spent, and ensuring the Commission complies with statutory requirements to have 3 RGTC meetings per year.

The Commission was reconstituted by EMNRD in early 2025 after a hiatus due to the COVID-19 Pandemic. In this new capacity, the Office -RGTC will:

1. Support the Commission's authority under:
 - 2015, HB 563
 - Master Plan Goals
 - General Appropriation Act of 2025
 - The State Trails System Act
2. Prepare recommendations to the legislature, and
3. Prepare reports to the Governor and the appropriate interim committees that measure, evaluate and report actual work accomplishments against the fiscal year Management Plan to define opportunities for continuous improvement.

2.2 Scope of Work (SOW): To achieve this purpose, the Office-RGTC has defined the following Scope of Work for FY 26:

2.2.1 Task #1: Develop Resource Capability And Operational Governance, Processes And Procedures:

- **Activity 1.1: Identify New And Revitalize Existing Working Groups.** Since the development and publication of the RGT Master Plan in 2018, the development of the Rio Grande Trail has been relegated to the following four activities to be executed by respective Office -RGTC Subcommittees:
 1. Tribal Engagement Subcommittee: The Tribal Subcommittee was created to represent tribal interests and ensure trail-related decisions are informed by tribal perspectives. The subcommittee provides input on current and future trail alignments, offers a forum to raise concerns and opportunities, and helps share trail-related information with tribal communities.
 2. Alignment Subcommittee: The Alignment Subcommittee was established to guide the development, identification, and designation of trail alignments for the RGT. The subcommittee will help set priorities for trail

OFFICE - RIO GRANDE TRAIL COMMISSION-FY 26 Program Management Plan

segment designations and identify existing and future alignments to be considered for inclusion in the master plan trail system.

3. Legislative Subcommittee: The Legislative subcommittee will champion and support legislative efforts related to the Rio Grande Trail. This committee will help guide, recommend, and advance legislative actions needed to implement the trail, support its development, and build long-term capacity.
4. Non-Profit Subcommittee: The Non-Profit subcommittee will establish and work with an independent Rio Grande Trail Non-Profit Organization focused on building capacity, coordinating resources, and ensuring the trail's ongoing development, management, and stewardship for years to come."

Figure 1, FY 26 Office – RGTC Collaborative Organization Structure presents the organizational structure developed by the Office-RGTC to perform the required WORK collaboratively in a timely and cost-efficient manner.

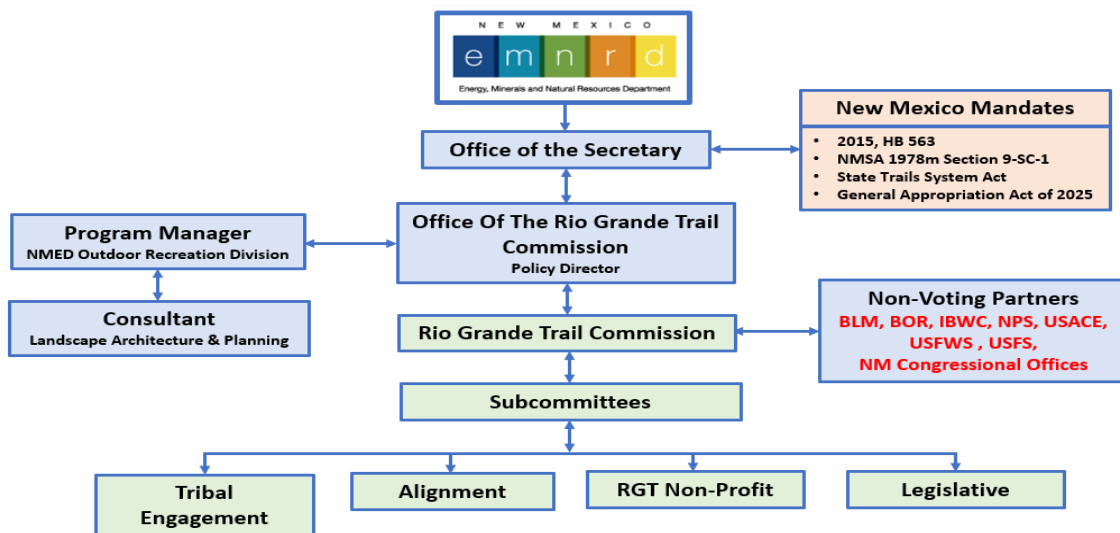


Figure 1: FY 26 Office – RGTC Collaborative Organization Structure

- **Activity 1.2: Develop And Commission Resource Capability:** In the beginning of 2025, the new Office - RGTC conducted a recruitment program to fill openings in the 12-seat commission as established by statute. The resulting Commission organization is shown in Figure 1, FY 26 Office – RGTC Commissioner Organization Chart with roles and responsibilities defined in **Table 1**, RGTC Commissioner Roles and Responsibilities.

OFFICE - RIO GRANDE TRAIL COMMISSION-FY 26 Program Management Plan

| RGTC Partner | Name | Affiliation | Primary Role and Responsibility |
|--|---------------------------------|--|--|
| EMNRD Secretary | Melanie A. Kenderline | Office of the Secretary | Officially designates RGT trail segments |
| Office of The Rio Grande Trail Commissioner | Ben Bajema | Office of the Secretary, Policy Director | <ul style="list-style-type: none"> (1) Manages the appropriations granted by the State and ensures funds are appropriately spent (2) Provides contract management, (3) Ensures the Commission complies with statutory requirements to have 3 RGTC meetings per year. (4) Supports trail-based economic growth. |
| New Mexico Economic Development Department - Outdoor Recreation Division | Carl Colonius | Program Manager | Provides technical guidance to the Office Of The Rio Grande Trail Commission and to Pland Contractor |
| Pland Collaborative (Professional Landscape Architecture & Planning Contractor | Dan Majewski | Program Manager | <ul style="list-style-type: none"> (1) Brings trail related items to the RGTC for approval, guidance and input (2) Administration and communication support (3) Works with stakeholders/communities to complete trail designation application |
| Rio Grand Trail Commission (RGTC) | Commissioners as defined below: | Multi-Discipline | Partners with EMNRD and the Office - RGTC as partners in the execution of the WORK |
| Office of The Rio Grande Trail Commissioner | Ben Bajema | Office of the Secretary, Policy Director | Chairman |
| Economic Development Department (EDD) | Karina Armijo | Outdoor Recreations Division Director | Provides funding and administrative support |
| Indian Affairs Department (IAD) | Michael Chacon | Tribal Environmental Justice Specialist | Ensures tribal consultation and cultural sensitivity |
| Department of Transportation (DOT) | Shannon Glendenning | Urban & Regional Planner | Coordinates with transportation infrastructure |
| Tourism Department (TD) | Dr. Shanna Sasser | Tourism Development Director | Promotes trail as tourism and recreation asset |
| Trail Management | Dan Carter | Continental Divide Trail | Provides trail development and maintenance expertise |
| State Parks Division (SPD) | Toby Velasquez | SPD Division Director | Offers state park and trail operations insight |
| River Ecology | Steve Harris | Rio Grande Restoration | Advises on river conservation |
| Bird Ecology | Tucker Davidson | Audubon Society | Focuses on bird habitat and conservation |
| Public 1 | Howard Gross | HG Conservation Solutions | Represents general public interest |
| Public 2 | Myron Temchin | Temchin Environmental Planning | Supports inclusive trail development & Program planning |

Table 1: FY 2026 Office – RGTC Commissioner Roles and Responsibilities

OFFICE - RIO GRANDE TRAIL COMMISSION-FY 26 Program Management Plan

- **Activity 1.3: Compliance with EMNRD standardized governance, processes and procedures:** The Chairman of the Office- RGTC is the only member of the Commission with the authority to enter into any agreements or commitments with external stakeholders or other public entities that may be associated with the performance of the WORK defined herein. The Chairman will follow the governance, policies and procedures establish by the Secretary of ENMRD and will seek guidance and support whenever necessary.
- **Activity 1.4: Compliance With The Open Meetings Act (NMSA 1978, Sections 10-15-1 to 4):** Subsequent to the approval of a resolution on April 11,2025, the Office-RGTC will comply with the requirements of the Open Meeting Act⁴
- **Activity 1.5: Implement existing Trails Segment Designation and Approval Processes:** The Rio Grande Trail Commission had previously developed a process for approving trail segments. In this three-way partnership, (1) the Office-RGTC, (2) our Landscape Architectural Planning consultant (Pland Collaborative) and (3) the New Mexico Outdoor Recreation Division (ORD), Trails+ department we have collectively developed a work flow process through implementing a Trail Segment Designation Process resulting in an Application Form that is designed to clarify the roles and responsibilities of land managers, owners, and agencies involved in a specific trail alignment.

Figure 2, Trails Segment Designation and Approval Work Flow Process identifies the six (6) step trail segment designation and approval process used by the RGTC.

2.2.2 Task 2: Provide Management and Support to Subcommittees: The Office of RGTC will facilitate progress, provide financial and administrative controls and risk management as appropriate to RGTC’s Commissioners as they perform Subcommittee services to achieve the Office -RGTC’s purpose. Detailed FY 26 Subcommittee Management Plans are presented in **ATTACHMENTS A – D** herein.

2.2.3 Task 3: Prepare Reports To The Governor And The Appropriate Interim Committees: Following quarterly meetings of the full commission, the Office -RGTC will prepare quarterly reports to the Secretary and Governor and then provide feedback to the RGTC Subcommittees in order to optimize performance.

⁴ <https://www.nmag.gov/wp-content/uploads/Open-Meetings-Act-Compliance-Guide>

OFFICE - RIO GRANDE TRAIL COMMISSION-FY 26 Program Management Plan

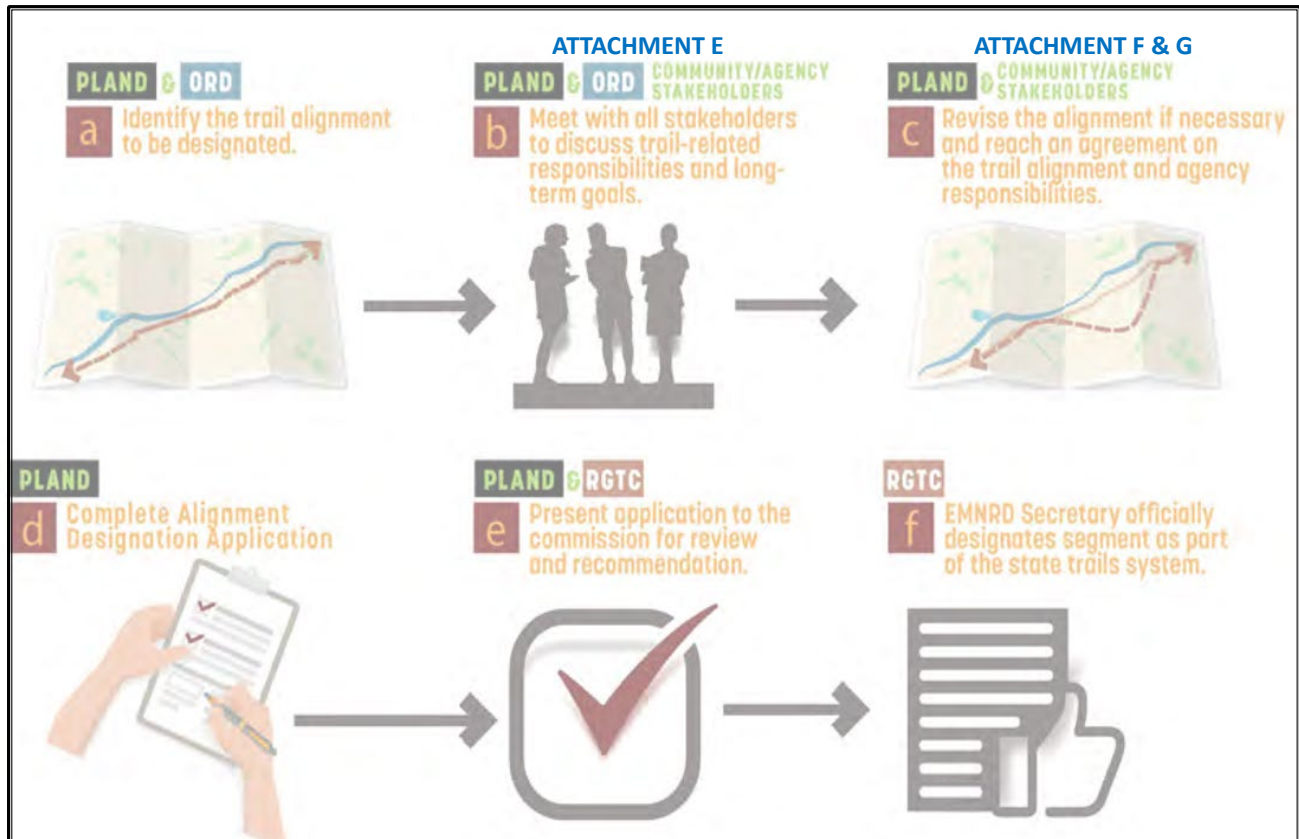


Figure 2: Trails Segment Designation and Approval Work Flow Process

3. DEFINITION OF CHALLENGES AND/OR RISKS

Specific challenges and /or risks to the successful implementation of Office- RGTCs FY 26 Program are defined in detail in each of the FY 26 Subcommittee Management Plans presented in **ATTACHMENTS A – D** herein. However, there are two Primary challenges that impact all of the Offices' Subcommittee's work efforts as summarized below.

3.1: Primary Challenge #1: Tribal Considerations Banning Trail Development Through Its Lands: The commission and our Pland partners are taking great care to respect the tribal consultation process and tribal sovereignty. The Office- RGTC's goal is to inform and seek input from all of New Mexico's nations, pueblos, and tribes realizing that the nations, pueblos, and tribes along the Rio have primacy over their reaches of the river. They may have a lot of deep cultural and traditional ties to the Rio, and areas near the Rio. The current political boundaries don't necessarily mean a lot to the tribes and in general it is a timely and complex task to achieve tribal approval for designating trial segments running through tribal lands. Further discussion and mitigations Strategies are presented in **ATTACHMENT A** to this PMP

OFFICE - RIO GRANDE TRAIL COMMISSION-FY 26 Program Management Plan

3.2 Primary Challenge #2: Ambitions for the 2026, New Mexico Legislative Session – Limiting Liability of Trail Owners: There are some challenging segments of the trail where we cannot designate it because the Conservancy District who owns and manages those segments, e.g. the Middle Rio Grande Conservancy District. There's an issue with liability. What does limiting liability for these special conservancy districts look like for the trail? The Office-RGTC will be developing a response to this concern. Further discussion and mitigations Strategies are presented in **ATTACHMENT D** to this PMP.

3.3 Primary Challenge #3: Startup Funding For A New Rio Grande Trail Non-Profit Organization: While it is fully understood that the Office- RGTC with its consultant, will support the formation of this RGT Non-Profit, the question of from where and how will startup funding come from to support activity until the new RGT Non-Profit can pursue and win Grant funding or otherwise secure necessary startup funding. Further discussion and mitigations Strategies are presented in **ATTACHMENT C** to this PMP.

4. FY 26 OFFICE- RGTC DELIVERABLES

The goals of FY 26 efforts of the Office-RTGC include but are not limited to delivering in a timely and cost-effective manner the following Program deliverables:

1. Standing up an enhanced and fully functional Office of the Rio Grande Trail Commission
2. Advancing the vision and goals of the Commission's authority under the Rio Grande Trail Act
3. Defining, recommending and designating additional trail and viable back routes of the Rio Grande Trail, recommend features, facilities and enhancements needed on the trail,
4. Preparing recommendations to the legislature
5. Preparing reports to the Governor and the appropriate interim committees that measure, evaluate and report actual work accomplishments against the fiscal year Management Plan to define opportunities for continuous improvement
6. Providing the people of New Mexico valued services commensurate with the state's appropriations.

OFFICE - RIO GRANDE TRAIL COMMISSION-FY 26 Program Management Plan

5. FY 26 OFFICE- RGTC SCHEDULE OF PERFORMANCE: The following schedule summarizes to FY 26 schedule of performance for the Office -RGTC. Detailed Subcommittee schedules with significant greater detail are presented in **ATTACHMENTS A – D** of this PMP.

| Task | Task Name | Activity Name/Description | Start Date | Finish Date |
|-------------|------------------|---|-------------------|--------------------|
| 1 | Office -RGTC | Develop organizational structure, resource capability and operational governance, processes and procedures. | April 2025 | December 2025 |
| 2 | | Provide Management and Support to Subcommittees | July 2025 | June 2026 |
| 3 | | Provide Reports to the Governor and Appropriate Interim Committees | July 2025 | June 2026 |
| 1 | Tribal | (TBD) | | |
| 2 | Engagement | | | |
| 3 | | | | |
| 1 | Alignment | Trail Designation Prioritization | February 2026 | June 2026 |
| 2 | | Trail Maintenance and Signage Prioritization | FY27 | FY 27 |
| 3 | | Trail Development Prioritization | FY 27 | FY 28 |
| 1 | RGT Non-Profit | Solicit and Procure Contractor Services | September 2025 | January 2026 |
| 2 | | Contractor Collaboration and Management | January 2026 | June 2026 |
| 3 | | NPO Board of Directors Recruitment and Startup Support | April 2026 | June 2026 |
| 1 | Legislative | Amend State Trails Act (Section 16-3-9 NMSA 1978 | June 2025 | Ongoing |
| 2 | | Evaluate/Develop Language for MOU if Applicable | June 2025 | Ongoing |
| 3 | | Create Office - RGTC Program Management Plan (PgMP) | September 2025 | December 2025 |



-FY 26 Program Management Plan

6. FY 26 OFFICE – RGTC BUDGET

In 2023, the Rio Grande Trail Commission was funded through a budget appropriation to EMNRD for \$75,000, recurring annually. Last year, it was changed to a one-time appropriation of \$225,000 for the development of the Rio Grande Trail Commission office. There are no specifics as to what that money is to be used for.

This past 2024 legislative session, the team at EMNRD attempted to get that language changed back to the \$75,000 annual appropriation to support the commission. It didn't make it into the budget. However, we were successful in getting the \$225,000 reauthorized for the development of the Rio Grande Trail Commission office.

The appropriation language is vague and therefore the use of the funds must be used to directly accomplish the vision and goals of the Rio Grande Master Plan in compliance with EMNRD policies and procedures for services and expenses defined by the Office- RGTC. As such, the Office- RGTC has defined its FY 26 budget to fund this PMP as follows:

- | | |
|--|------------------|
| 1. Commissioner travel, living and other meeting expenses for 12 commissioners to travel to four (4) annual meetings; trail management workshops plus incidental associated promotional materials: | \$ 25,000 |
| 2. Office- RGTC’s Landscape Architecture and Planning Consultant: | \$ 60,000 |
| 3. Non-Profit Subcommittee – NPO RFP Formation Consultant: | \$100,000 |
| 4. Signage, manufacture & placement and other ground improvements for newly designated segments: | <u>\$ 40,000</u> |
| Total Estimated FY 26 Office- RGTC Budget: | \$225,000 |



-FY 26 Program Management Plan

***ATTACHMENT A
FY 26 TRIBAL SUBCOMMITTEE
MANAGEMENT PLAN***

(TBD)



-FY 26 Program Management Plan

***ATTACHMENT B
FY 26 ALIGNMENT SUBCOMMITTEE
MANAGEMENT PLAN***



-FY 26 Program Management Plan

RGTC: Alignment Subcommittee

Chairperson: Dan Carter

1. PURPOSE AND SCOPE DESCRIPTION

Purpose: The Alignment Subcommittee guides the development, identification, and designation of trail alignments for the RGT. The subcommittee helps to set priorities for trail segment designations and identifies existing and future alignments to be considered for inclusion in the trail system.

Task #1 - Trail Designation Prioritization: The subcommittee will work with stakeholders to identify existing trails within the proposed alignment that would be the best candidates for designation. This process will include analysis, discussion, collaboration, and the collection of letters of support.

- **Activity 1.1:** Analyze the list of existing trails to identify the best candidates for designation.
- **Activity 1.2:** Work with stakeholders and land managers to build support and identify any obstacles.
- **Activity 1.3:** Prepare trail segments for designation at future commission meetings.

Task #2 - Trail Maintenance and Signage Prioritization: The subcommittee will work with stakeholders and project partners to identify portions of the designated trail most in need of maintenance and signage. Once those sections of trail have been identified, the subcommittee will identify strategies to increase and improve maintenance in those sections.

- **Activity 2.1:** Identify sections of trail which need maintenance and signage.
- **Activity 2.2:** Identify strategies and partners that can support maintenance and signage needs.
- **Activity 2.3:** Work with stakeholders and partners to implement maintenance and signage improvements.

Task #3 - Trail Development Prioritization: The subcommittee will work with stakeholders and partners to identify sections of the proposed trail that do not yet exist and are most ready to be constructed and developed. Once those sections have been identified, the committee will coordinate with the various stakeholders involved in the trail-building process.

- **Activity 3.1:** Identify and rank sections of the proposed trail in terms of readiness for construction.
- **Activity 3.2:** Collaborate with stakeholders to support the process of trail construction and development.



-FY 26 Program Management Plan

- **Activity 3.3:** Review proposals presented by trail developers and coordinate construction of the trail segment.

2. DEFINITION OF TASK AND ACTIVITY CHALLENGES AND/OR RISKS:

NOTE: The essential challenge with the Rio Grande Trail is that it is an unfunded mandate. Until it receives the proper funding, either via the New Mexico State legislature or through a non-profit organization that utilizes grants and philanthropic contributions (ideally through both methods), the trail will be unable to achieve its potential.

Task # 1: Trail Designation Prioritization:

- **Risk 1.1:** Competing priorities from different stakeholders will require tradeoffs.
 - **Mitigation Activity 1.1:** Objectively identifying the best candidate may require some flexibility.
 - **Mitigation Activity 1.2:** Obstacles to trail designation and implementation are numerous. The best approach is to identify strong champions and prioritize coordination and collaboration with them. Even if that approach doesn't necessarily line up with the trail segments that are most likely to be implemented quickly, it will ultimately lead to better results.
 - **Mitigation Activity 1.3:** Primary barriers to designation are timely communication with the jurisdiction that is responsible for that section of the trail and the unpredictability of their response time and approval process (e.g., county commission meeting schedules). Getting ahead of that will require a cohesive schedule and timeline. A process that could speed up designation would be to obtain commission approval before the jurisdiction responsible confirms it.

Task #2: Trail Maintenance and Signage Prioritization:

- **Risk 2.1:** Many sections of the trail are isolated and not heavily trafficked.
 - **Mitigation Activity 2.1:** Many sections of the trail are isolated and not heavily trafficked. Identifying trail segments for maintenance will require partnerships with the responsible jurisdiction and, eventually, trail users themselves. A network of people using the trail should be established and connected to the commission and the non-profit.



-FY 26 Program Management Plan

- **Mitigation Activity 2.2:** There are various networks of volunteers who are already maintaining trails throughout the state. They should be leveraged for support on this project as well.
- **Mitigation Activity 2.3:** There may be a lack of interest and awareness about the trail. Additionally, the creation of a non-profit to manage this process is vital.

Task #3: Trail Development Prioritization:

- **Risk 3.1:** There may be a difference between the sections of the trail that are most ready to be constructed technically and most ready to be constructed from a policy perspective.
 - **Mitigation Activity 3.1:** As mentioned, there may be a difference between the sections of the trail that are most ready to be constructed technically and most ready to be constructed from a policy perspective. A large list of “shovel-ready”, with cost estimates and technical details mapped out, projects will help to mitigate this challenge.
 - **Mitigation Activity 3.2:** With limited resources, it will be important to be strategic about where new trail gets prioritized. One approach could be to prioritize trail in places that have the least amount of existing trail. Another approach could be to focus on places where there is already a large number of trail miles designated, with only small gaps separating the various sections.
 - **Mitigation Activity 3.3:** This will be another vital role for the non-profit to fill. Selecting trail developers will require a rolling selection committee to be identified.



-FY 26 Program Management Plan

3. ALIGNMENT SUBCOMMITTEE IMPLEMENTATION SCHEDULE

| Task /Act. # | Task Name | Activity Name/Description | Milestone? y/N | Start Date | Finish Date | Comment # Below |
|--------------|-------------------------------------|--|----------------|------------|-------------|-----------------------|
| 1-1 | Segment Analysis | Rank list of existing trails for designation | N | 2/1/26 | 3/1/26 | |
| 1-2 | Synthesis of analysis | Identify which projects have the best criteria for forward movement | N | 3/2/26 | 4/1/26 | |
| 1-3 | Designation preparation | Build support from stakeholders associated with the trail segments most likely to move forward | N | 4/2/26 | 6/1/26 | 1 |
| 2-1 | Maintenance/ signage analysis | Rank list of segments of previously designated trail for maintenance and signage needs | N | 6/2/26 | 8/1/26 | FY 27 |
| 2-2 | Maintenance/ signage coordination | Identify strategies and partners that can support maintenance and signage needs | N | 8/2/26 | 10/1/26 | FY 27 |
| 2-3 | Maintenance/ signage implementation | Coordinate with stakeholders and partners to implement the maintenance and signage plan | N | 10/2/26 | 1/1/27 | 2 FY 27 |
| 3-1 | Segment construction analysis | Identify and rank sections of the proposed trail in terms of readiness for construction. | N | 1/2/27 | 3/1/27 | FY 27 |
| 3-2 | Segment construction planning | Collaborate with stakeholders to support the process of trail construction and development. | N | 3/2/27 | 5/1/27 | FY 27 |
| 3-3 | Segment construction | Review proposals presented by trail developers and coordinate construction of the trail segment. | N | 5/2/27 | 1/1/28 | 3 FY 27 - FY 28 |

COMMENTS: Comment No. 1: There is a limited number of existing trail segments that remain undesignated. The remaining sections are subject to:



-FY 26 Program Management Plan

- FY – 27 Comment No. 2: Signage installation and maintenance on trail segments that have already been designated are activities that should be coordinated if possible. Signage could be installed in coordination with maintenance need evaluations.
- FY 27 – FY28 Comment No. 3: Initial trail construction, for segments that don't have any existing trail, is scheduled to begin in 2027. This is due to the necessity of a non-profit to be in place before these efforts begin. While it technically could begin before a non-profit is founded, it's unclear that any of the current management entities (commission, EMNRD, ORD, or contractors) would be well-suited to manage such an endeavor. Under their current contracts or agreements. The existing contractor, Pland Collaborative, would be well-suited to do this work, but it would require a different contract to do so.

4. DESCRIPTION OF TASK AND ACTIVITY DELIVERABLES

Task #1: Trail Designation Prioritization:

- **Deliverable 1.1:** A ranked inventory of existing trail segments evaluated for Rio Grande Trail designation, including documentation of evaluation criteria, jurisdictional ownership, known constraints, and relative readiness for designation.
- **Deliverable 1.2:** A stakeholder coordination summary documenting outreach effort, letters of support, identified champions, unresolved obstacles, and recommended actions needed to advance priority trail segments toward designation.
- **Deliverable 1.3:** commission-ready designation packets for priority trail segments, including maps, supporting documentation, stakeholder endorsements, and staff recommendations for presentation at future RGT Commission meetings.

Task #2: Trail Maintenance and Signage Prioritization:

- **Deliverable 2.1:** A prioritized list of designated trail segments with identified maintenance and signage needs, supported by field observations, stakeholder input, and available condition assessments.
- **Deliverable 2.2:** A maintenance and signage strategy memo outlining potential partners, volunteer networks, funding sources, and implementation approaches for addressing priority needs along designated trail segments.
- **Deliverable 2.3:** Documentation of implemented or initiated maintenance and signage improvements, including coordination records, partner commitments, and recommended next steps for ongoing trail stewardship.



-FY 26 Program Management Plan

Task #3: Trail Development Prioritization:

- **Deliverable 3.1:** A ranked list of proposed trail segments suitable for new construction, including readiness criteria such as land ownership, policy alignment, estimated costs, and technical feasibility.
- **Deliverable 3.2:** Stakeholder coordination summaries and planning materials supporting trail development, including meeting notes, agency coordination outcomes, and alignment with local or regional planning efforts.
- **Deliverable 3.3:** Review memoranda and recommendations related to trail development proposals, including coordination with selected trail developers and documentation supporting future construction phases.



-FY 26 Program Management Plan

5. COST ESTIMATE WORKSHEET

| Task/ Act. # | Task Name | Activity Name/ Description | Equipment/ Materials (\$) | Travel & Living (\$) | Other Direct Costs* (\$) | Subcontractor Service Costs (\$) | Total Activity Cost |
|--|--------------------------------------|---------------------------------------|--|---|---|---|------------------------------------|
| 1-1 | Segment Analysis | | \$0 – \$500 | \$1,000 – \$2,000 | \$500 – \$1,000 | \$4,000 – \$6,000 | \$5,500 – \$9,500 |
| 1-2 | Synthesis of Analysis | | \$0 | \$500 – \$1,000 | \$500 – \$1,000 | \$3,000 – \$5,000 | \$4,000 – \$7,000 |
| 1-3 | Designation Preparation | | \$0 – \$500 | \$1,000 – \$2,000 | \$1,000 – \$2,000 | \$4,000 – \$6,000 | \$6,000 – \$10,500 |
| Comments Task #1: Costs primarily reflect staff and contractor time for analysis, coordination, mapping, and preparation of commission-ready designation materials. Travel costs assume limited in-state meetings; equipment needs are minimal. | | | | | | | |
| 2-1 FY 27 | Maintenance / Signage Analysis | | \$0 – \$500 | \$1,500 – \$2,500 | \$500 – \$1,000 | \$5,000 – \$7,000 | \$7,000 – \$11,000 |
| 2.2 FY 27 | Maintenance / Signage Coordination | | \$0 | \$1,000 – \$2,000 | \$1,000 – \$2,000 | \$4,000 – \$6,000 | \$6,000 – \$10,000 |
| 2-3 FY 27 | Maintenance / Signage Implementation | | \$5,000 – \$15,000 | \$1,000 – \$2,000 | \$1,000 – \$3,000 | \$5,000 – \$8,000 | \$7,000 – \$13,000 |
| Comments Task #2: Implementation costs are intentionally variable to allow flexibility depending on whether signage and maintenance are pilot-scale or expanded through partner and volunteer support. Assumes some materials (signage, posts) may be funded separately or in kind. | | | | | | | |



-FY 26 Program Management Plan

| | | | | | | |
|--|---|-------------------|-----------------------------------|----------------------|----------------------|-----------------------|
| 3-1 FY 27 | Segment Construction Analysis | \$0 – \$500 | \$1,500 – \$2,500 | \$500 – \$1,000 | \$5,000 – \$7,000 | \$7,000 – \$11,000 |
| 3-2 FY 27 | Segment Construction Planning | \$0 | \$1,000 – \$2,000 | \$1,000 – \$2,000 | \$4,000 – \$6,000 | \$6,000 – \$10,000 |
| 3-3 FY 28 | Segment Construction Coordination | \$0 | \$1,000 – \$2,000 | \$1,000 – \$3,000 | \$5,000 – \$8,000 | \$7,000 – \$13,000 |
| Comments Task #3: n/a | | | | | | |
| SUBTOTAL ESTIMATED COST (\$): | | \$57,500 – | | | | |
| | | \$108,000 | | | | |
| | | | ESTIMATED TOTAL COST (\$): | | | |
| | | | | | | \$60,000 – |
| | | | | | | \$110,000 |
| FY 26 FUNDING ESTIMATE: \$40,000 with contingency | | | | | | |



-FY 26 Program Management Plan

6. ADDITIONAL DISCUSSION AS APPROPRIATE:

A summary of the above spreadsheet, in the form of a legislative ask, is below. Note that these are conservative numbers, and we could adjust the numbers in the spreadsheet if required.

FY26 Legislative Funding Request

Rio Grande Trail Commission – Alignment Subcommittee

Program Management, Planning, and Coordination

Requested FY26 Allocation: \$95,000

1. Purpose of the Request:

The Rio Grande Trail (RGT) Alignment Subcommittee requests a \$95,000 FY26 legislative allocation to support planning, coordination, and program management activities necessary to advance trail designation, maintenance prioritization, and future trail development along the Rio Grande Trail corridor.

This request supports non-capital, pre-construction activities that are critical to advancing the Rio Grande Trail in a strategic, coordinated, and cost-effective manner across multiple jurisdictions.

2. Scope of Work Supported by the FY26 Allocation:

The requested funds will support three core work areas during FY26:

1. Trail Designation Prioritization:

Funding will support analysis and coordination needed to identify, rank, and prepare existing trail segments for formal Rio Grande Trail designation. This includes stakeholder coordination, jurisdictional outreach, and preparation of commission-ready designation materials.

FY26 Allocation: \$25,000

2. Trail Maintenance and Signage Prioritization:

Funding will support the identification of maintenance and signage needs along already-designated trail segments and coordination with partners to implement targeted improvements. This work emphasizes leveraging volunteer networks, local governments, and in-kind support to maximize impact.

FY26 Allocation: \$40,000



-FY 26 Program Management Plan

3. Trail Development Readiness and Coordination:

Funding will support analysis and coordination for trail segments that do not yet exist but are most ready for development. This includes readiness assessments, stakeholder coordination, and proposal review to position projects for future capital funding once a non-profit entity is established.

FY26 Allocation: \$30,000

Total FY26 Funding Request:

| • Category | FY26 Amount |
|---|-----------------|
| ▪ Trail Designation Prioritization | \$25,000 |
| ▪ Trail Maintenance & Signage Prioritization | \$40,000 |
| ▪ Trail Development Readiness | <u>\$30,000</u> |
| • Total Request: | \$95,000 |
| • What This Funding Does Not Cover: This request does not include capital construction costs, such as: | |
| ▪ New trail construction | |
| ▪ Major infrastructure improvements | |
| ▪ Land acquisition | |
| ▪ Long-term maintenance operations | |

Those efforts will be pursued separately through future legislative requests, federal grants, and philanthropic funding once a dedicated non-profit partner is in place.

3. Why This Investment Is Necessary:

The Rio Grande Trail is a statewide, multi-jurisdictional project that currently functions as an unfunded mandate. Without dedicated programmatic funding:

- Trail designation efforts stall due to coordination constraints
- Maintenance and signage needs remain unprioritized
- Future construction projects cannot be positioned for outside funding

This FY26 allocation provides the foundational planning and coordination capacity required to unlock future capital investments and ensure that limited public funds are spent strategically.

4. Expected Outcomes in FY26:

With this funding, the Rio Grande Trail Commission will:



-FY 26 Program Management Plan

- Advance multiple trail segments toward formal designation
- Identify and address priority maintenance and signage needs
- Prepare a ranked, shovel-ready pipeline of trail development projects
- Strengthen partnerships with state, federal, tribal, and local entities
- Position the Rio Grande Trail for future federal and philanthropic funding

5. Administration of Funds

Funds will be administered by EMNRD in coordination with the Rio Grande Trail Commission, utilizing existing contractor capacity and in-kind partner contributions where possible to maximize cost efficiency.



-FY 26 Program Management Plan

***ATTACHMENT C
FY 26 NON-PROFIT SUBCOMMITTEE
MANAGEMENT PLAN***



-FY 26 Program Management Plan

RGTC: Non-Profit Subcommittee

Chairperson: Howard Gross

1. PURPOSE & SCOPE OF WORK DESCRIPTION

Purpose: The Non-profit Subcommittee was created to support the establishment of and work with an independent Rio Grande Trail Non-Profit Organization focused on building capacity, coordinating resources, and ensuring the trail's ongoing development, management, and stewardship for years to come.

Task #1: Solicit and Procure Contractor Services: The Rio Grande Trail Commission ("RGTC") will solicit proposals from contractors and procure services to establish a 501(c)(3) Non-Profit Organization ("NPO") to support the development of and sustain the Rio Grande Trail ("RGT"), consistent with the work being conducted by the RGTC.

- **Activity 1.1:** The NPO subcommittee will develop a Scope of Work and Implementation Schedule for inclusion into a Request for Proposal (RFP) to be executed by the Energy Minerals and Natural Resources Department (EMNRD).
- **Activity 1.2:** The NPO subcommittee will support the EMNRD in evaluating and responding to Respondent questions once the RFP has been issued.
- **Activity 1.3:** The NPO subcommittee will support EMNRD by developing a Respondent Proposal Evaluation Criteria Checklist and supporting the evaluation and award process as requested.

Task #2: Post Award Contractor Collaboration and Management Support: Once the Contractor is awarded the project, the NPO subcommittee will support EMNRD, in an advisory role, in Contractor collaboration and management, as defined in the Contractor's contractual scope of work and as directed by EMNRD (through the Office of the Rio Grande Trail Commission).

- **Activity 2.1:** Monitor the Contractor's public engagement process designed to generate interest amongst and gather input from key stakeholder groups and the general public regarding the formation and purpose of a RGT NPO;
- **Activity 2.2:** Review and advise the Contractor's report that summarizes input received and includes other essential information for forming a RGT NPO, including reviewing the first draft and signing off on the second draft;
- **Activity 2.3:** Work with the Contractor to recruit and form a RGT NPO Board of Directors ("BOD");



-FY 26 Program Management Plan

- **Activity 2.4:** Monitor the Contractor's work in seating and guiding the BOD through initial meetings to accomplish important steps for the NPO's formation including developing a strategic plan and filing federal and state formation applications.

Task #3: Create documents that will guide the NPO in working effectively with New Mexico state government.

- **Activity 3.1:** Define the relationships between and roles of the NPO, RGTC (including the RGT NPO Subcommittee), EMNRD, and NM Outdoor Recreation Division. This should be formatted as a draft Memorandum of Understanding.
- **Activity 3.2:** Create a document discussing how the NPO would operate in a manner that is consistent with the NM State Trails Act and the statutes pertaining to the Rio Grande Trail Commission.

2. DEFINITION OF PROJECT CHALLENGES AND/OR RISKS

Task #1: Solicit and Procure Contractor Services:

- **Risk 1.1:** The schedule for solicitation, procurement and award of Contractor services is extended/delayed pushing the completion of the project beyond the end of Fiscal Year 2026 (June 30, 2026)

Mitigation Activity 1.1: To the extent possible:

- The schedule for Contractor performance is revised and accelerated through the Award process to ensure completion within FY 26, and
- The RGTC revises the Contract schedule to allow the Contract schedule to extend into FY27.

- **Risk 1.2:** The proposed best value Contractor price exceeds the RGTC budget for the work.

Mitigation Activities 1.2: To the extent possible:

- The Scope of Work is reduced to meet allowable funding while still achieving Activity 3.2 (seating and startup of the new NPO BOD), and/or
- Additional funding from the RGTC is requested, approved and added to the Contract, and
- Combination of the two mitigation activities above.



-FY 26 Program Management Plan

Task #2: Post Award Contractor Collaboration and Management Support:

- **Risk 2.1:** Due to situations beyond the control NM EMNRD/RGTC or the Contractor, the schedule for implementation of Contract services is extended/delayed pushing the completion of the project beyond the end of Fiscal Year 2026 (June 30, 2026).

Mitigation Activity 2.1: To the extent possible:

- The schedule for Contractor performance is revised and accelerated through the Contract change process to ensure completion within FY 26, and
 - The RGTC revises the Contract schedule to allow the Contract schedule to extend into FY27.
- **Risk 2.2:** Due to situations beyond the control NM EMNRD/RGTC or the Contractor, the cost for implementation of Contract services is forecasted to increase beyond the Contract Not-to-Exceed Price.

Mitigation Activities 2.2: To the extent possible:

- The Scope of Work is reduced to meet allowable funding while still achieving Activity 2.4 (seating and startup of the new NPO BOD), and/or
- Additional funding from the RGTC is requested, approved and added to the Contract, and
- Combination of the two mitigation activities above

Task #3: Recruit NPO Board Of Directors And Support Startup:

- **Risk 3.1:** Recruiting a minimum of five (5) candidates for the volunteer position of a RGT NPO Board of Directors is found to be difficult due to capability, availability, other candidate restraints.

Mitigation Activities 3.1: To the extent possible:

- The RGTC revises its startup requirement for the BOD to support a startup BOD with three (3) Directors and at least two (2) Directors committed to join the BOD at a later time in 2026, and
- The RGTC revises the Contract schedule to allow the recruitment process to extend into FY27 in order to recruit a minimum of five (5) Directors.



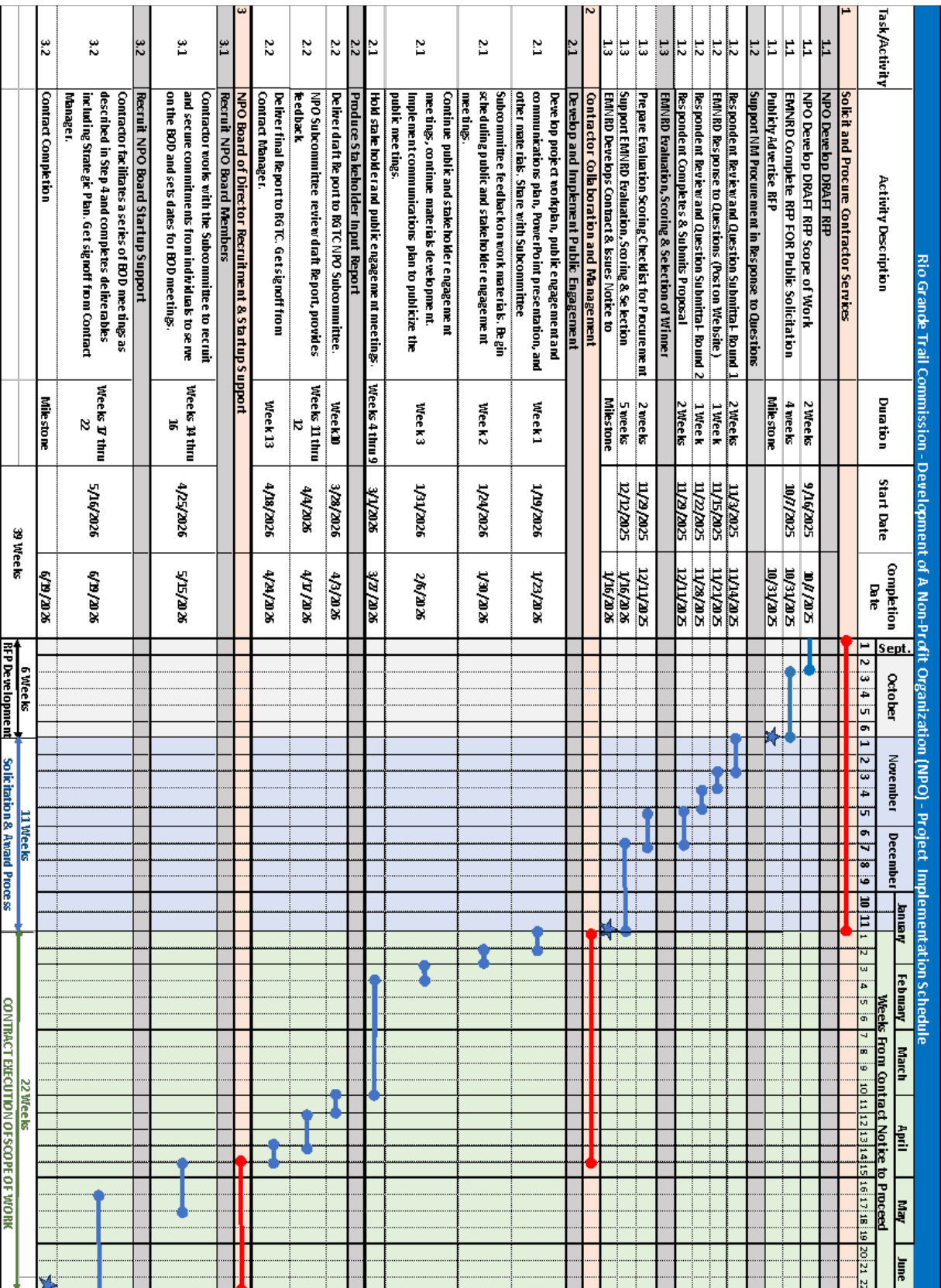
-FY 26 Program Management Plan

3. NPO FORMATION PROJECT IMPLEMENTATION SCHEDULE

| Rio Grande Trail Commission - Development of A Non-Profit Organization (NPO) Project Implementation Schedule | | | | |
|---|--|------------------|------------|-----------------|
| Task/Activity | Activity Description | Duration | Start Date | Completion Date |
| 1 Solicit and Procure Contractor Services | | | | |
| 1.1 | NPO Develop DRAFT RFP | | | |
| 1.1 | NPO Develop DRAFT RFP Scope of Work | 2 Weeks | 9/16/2025 | 10/7/2025 |
| 1.1 | EMNRD Complete RFP FOR Public Solicitation | 4 weeks | 10/7/2025 | 10/31/2025 |
| 1.1 | Publicly Advertise RFP | Milestone | | 10/31/2025 |
| 1.2 | Support NM Procurement in Response to Questions | | | |
| 1.2 | Respondent Review and Question Submittal- Round 1 | 2 Weeks | 11/3/2025 | 11/14/2025 |
| 1.2 | EMNRD Response to Questions (Post on Website) | 1 Week | 11/15/2025 | 11/21/2025 |
| 1.2 | Respondent Review and Question Submittal- Round 2 | 1 Week | 11/22/2025 | 11/28/2025 |
| 1.2 | Respondent Completes & Submits Proposal | 2 Weeks | 11/29/2025 | 12/11/2025 |
| 1.3 | EMNRD Evaluation, Scoring & Selection of Winner | | | |
| 1.3 | Prepare Evaluation Scoring Checklist for Procurement | 2 weeks | 11/29/2025 | 12/11/2025 |
| 1.3 | Support EMNRD Evaluation, Scoring & Selection | 5 weeks | 12/12/2025 | 1/16/2026 |
| 1.3 | EMNRD Develops Contract & Issues Notice to Proceed | Milestone | | 1/16/2026 |
| 2 Contractor Collaboration and Management | | | | |
| 2.1 | Develop and Implement Public Engagement | | | |
| 2.1 | Develop project workplan, public engagement and communications plan, PowerPoint presentation, and other materials. Share with Subcommittee | Week 1 | 1/19/2026 | 1/23/2026 |
| 2.1 | Subcommittee feedback on work materials. Begin scheduling public and stakeholder engagement meetings. | Week 2 | 1/24/2026 | 1/30/2026 |
| 2.1 | Continue public and stakeholder engagement meetings, continue materials development. Implement communications plan to publicize the public meetings. | Week 3 | 1/31/2026 | 2/6/2026 |
| 2.1 | Hold stakeholder and public engagement meetings. | Weeks 4 thru 9 | 3/1/2026 | 3/27/2026 |
| 2.2 | Produce Stakeholder Input Report | | | |
| 2.2 | Deliver draft Report to RGTC NPO Subcommittee. | Week 10 | 3/28/2026 | 4/3/2026 |
| 2.2 | NPO Subcommittee review draft Report, provides feedback. | Weeks 11 thru 12 | 4/4/2026 | 4/17/2026 |
| 2.2 | Deliver final Report to RGTC. Get signoff from Contract Manager. | Week 13 | 4/18/2026 | 4/24/2026 |
| 3 NPO Board of Director Recruitment & Startup Support | | | | |
| 3.1 | Recruit NPO Board Members | | | |
| 3.1 | Contractor works with the Subcommittee to recruit and secure commitments from individuals to serve on the BOD and sets dates for BOD meetings. | Weeks 14 thru 16 | 4/25/2026 | 5/15/2026 |
| 3.2 | Recruit NPO Board Startup Support | | | |
| 3.2 | Contractor facilitates a series of BOD meetings as described in Step 4 and completes deliverables including Strategic Plan. Get signoff from Contract Manager. | Weeks 17 thru 22 | 5/16/2026 | 6/19/2026 |
| 3.2 | Contract Completion | Milestone | | 6/19/2026 |
| | | | 39 Weeks | |



-FY 26 Program Management Plan





-FY 26 Program Management Plan

4. NPO SUBCOMMITTEE PROJECT DELIVERABLES:

1. Preparing a Request for Proposal and working with EMNRD to solicit and procure Contractor services leading the development and seating of a Rio Grande Trail Non-Profit Organization (RGT-NPO) to build capacity, coordinate resources, and ensuring the trail's ongoing development, management, and stewardship for years to come (Task #1).
2. Supporting as appropriate, Contractor services in developing and implementing a Public engagement outreach program to generate interest amongst and gathering input from key stakeholder groups regarding the formation and purpose of a RGT NPO; and then, Producing a report that summarizes input received and includes other essential information for forming a RGT NPO (Task 2).
3. Supporting as appropriate, Contractor services associated with recruiting and seating a RGT NPO, Board of Directors and initial meetings to accomplish important steps for the NPO's formation including developing a strategic plan and filing federal and state formation applications (Task 2).
4. Produce two documents, as described under Task 3, that will guide the NPO in working effectively with New Mexico state government.

5. PROJECT BUDGET:

The NPO subcommittee is requesting a budget for the selected Contractor's Purchase Agreement of Not-to-Exceed \$100,000. Incidental costs associated with NPO Subcommittee occasional travel and living expenses associated with the implementation of the Contractors Work will be carried in the RGTC's budget.



-FY 26 Program Management Plan

ATTACHMENT D FY 26 LEGISLATIVE SUBCOMMITTEE MANAGEMENT PLAN



-FY 26 Program Management Plan

RGTC: Legislative Subcommittee
Chairperson: Tucker Davidson

1. Purpose Statement and Scope of Work:

Purpose: Champion and support legislative efforts related to the Rio Grande Trail. This committee will help guide, recommend, and advance legislative actions needed to implement the trail, support its development, and build long-term capacity.

Task #1: Provide limited liability for Special Districts by amending the State Trails Act (Section 16-3-9 NMSA 1978). Develop amendment language in the State Trails Act that will facilitate the cooperation and willingness of special districts like Elephant Butte Irrigation District and Middle Rio Grande Conservancy District to participate in the designation of the Rio Grande Trail. for special district public use of the trail hosted on its land.

When a special district grants an easement or a right of way to EMNRD to be designated as part of the state trail system, they are also allowed to receive those limits of liability (excluding cases of willful or wanton misconduct of that special district). If there is gross negligence, there is still a pathway for the injured individual to pursue legal action. But per the state trails act, there is a liability entity, that being the Secreta of ENMRD, who would oversee, per the states trails act, the management, maintenance and policing of the trail system. EMNRD is just trying to clarify that immunity exists, and still giving claimants a voice and a path forward in the courts to right wrongs.

- **Activities 1.1:** Develop language for the amendment as follows:

“The state trails act already says no person or corporation (INSERT: "or political subdivision or special district of the state, including irrigation and Conservancy District") their successors and interest who has granted a right of way or easement across his land to the mineral energy minerals and Natural Resources Department for use in the state trail system, shall be liable to any user of the trail for injuries suffered on the right of way or easement unless the injuries are caused by the will for wanton misconduct of the grantor.”

EMNRD proposed language was submitted to the governor's office on June 1, 2025; waiting for feedback and comment.

- **Activities 1.2:** Evaluate if there are other avenues or if legislation is not required, or if there are other better statutes that should be amended



-FY 26 Program Management Plan

- **Activities 1.3:** Promote the amendment to special districts and present to interim committees in the summer of 2025. Maintain and find legislative sponsors:
 1. Senator Brantley and Representative Kathleen Cates to bring to the floor
 2. Juliana Coob - representing trail attorneys - people who have interest in injury cases
 3. Elephant Butte Irrigation District legislators
 4. New advocates to be defined

Task #2: Possible transfer of management and maintenance of trail segment of the state trail system back to the current land manager using alternate legal document. Evaluate other legal document formats for the original land manager to take over those responsibilities of management that the Secretary is granted per the state trails act.

- **Activity 2.1:** Evaluate/develop language for a Memo of Understanding (MOU), leasing agreement or some similar legal document that for the original land manager allows them to take over those responsibilities of management that the Secretary is granted per the state trails act.

Task #3: Office of the Rio Grande Trail Commission (Office) Creates a – FY-26 Program Management Plan (PgMP). Prepare a FY-26 Program Management Plan that defines the planned activities for the Office of the Rio Grande Trail Commission. For the Office itself and for each Subcommittee under the Office, the PgMP will define the planned (1) Scope of Work (SOW); (2) Envisioned Challenges and Risks associated with the planned SOW; (3) Schedule for Performance; (4) Task and Activity Deliverables; and (5) A cost estimate for performance of the SOW activities. The PgMP will provide management direction for the FY-26 Office work effort and provide a baseline for measuring and reporting the value of the Office's efforts on a periodic basis.

- **Activities 3.1:** Develop a management approved PgMP template for each subcommittee to use to develop and record its FY-26 Plan.
- **Activities 3.2:** Transmit the template for each Office subcommittee to complete and forward back to the Legislative subcommittee for incorporation into an Office-wide DRAFT PgMP.
- **Activities 3.3:** Legislative subcommittee creates the Office-wide DRAFT PgMP and routes it back to each subcommittee for review and comment.
- **Activities 3.4:** Open discussion of DRAFT PgMP in upcoming September 2025 Commission Meeting.
- **Activities 3.5:** Legislative Committee incorporates comments from September Commission meeting, and prepares a DRAFT final for the Office to Route to the Office of the Secretary for final review, comment and approval.



-FY 26 Program Management Plan

- **Activities 3.6:** Legislative Committee incorporates comments from the Secretary's Office and prepares a final document for FY-26 Office execution by the end of FY 2026 Q2.

2. DEFINITION OF TASK AND ACTIVITY CHALLENGES AND/OR RISKS:

Risk 1.1: Provide limited liability for Special Districts by amending the State Trails Act (Section 16-3-9 NMSA 1978)

- **Mitigation Activity 1.1:** Choosing the right legislation to amend. Review amendment strategy with EMNRD general counsel, MRGCD counsel, and personal injury lawyers' representative;
- **Mitigation Activity 1.2:** Getting special districts, injury lawyers, and legislators on-board with the amendment. Host several meetings to review liabilities and other worries that the districts might have. Emphasize the benefit that this amendment provides to special districts in the event of litigation. Start with meetings with MRGCD and Elephant irrigation Districts;
- **Mitigation Activity 1.3:** Getting approval from the legislative body during the 2026 legislative session. Present to interim committees during the summer to address any concerns that could hinder the amendment from passing.

Risk 2.1: Possible transfer of management and maintenance of trail segment of the state trail system back to the current land manager using alternate legal document.

- Risk, Mitigation Activity 2.1: TBD

Risk 3.1: Office of the Rio Grande Trail Commission (Office) Creates a – FY-26 Program Management Plan (PgMP).

- Mitigation Activity 3.1: Subcommittee Commissioners have difficulty in reaching consensus in developing/defining a comprehensive Plan for FY-26 activity;
- Mitigation Activity 3.2: Subcommittee Commissioners are resource limited and cannot complete the PgMP template in a timely fashion to meet milestone completion requirements for discussion in the September 2025 Commission meeting.



-FY 26 Program Management Plan

3. SCHEDULE TEMPLATE FOR TASKS AND ACTIVITIES

| Task /Act. # | Task Name | Activity Name/Description | Milestone ? Yes/No | Start Date | Finish Date | Comment No. Below |
|---------------------|--|--|-------------------------------|-------------------|--------------------|--------------------------|
| 1-1 | Amend State trails | Develop Amendment language | | 6/15/ | TBD | |
| 1-2 | Act (Section 16-3-9 NMSA 1978) | Evaluate other avenues or if legislation is not required | | | | |
| 1-3 | NMSA 1978) | Promote the Amendment | | | | |
| 2-1 | Possible transfer of trail segments to current land owners | Evaluate/develop language for MOU if appropriate | | 6/15 | TBD | |
| 3-1 | Create Office | Develop DRAFT PgMP Subcommittee Template | No | 6/15 | 7/30 | Completed |
| 3-2 | Program | Subcommittee completes PgMP template | No | 8/1 | 8/15 | Completed |
| 3-3 | Management Plan | Legislative Subcommittee creates DRAFT PgMP and transmits to all Subcommittee review and comment | No | 8/23 | 11/30 | Completed |
| 3-4 | | PgMP discussion in September Commission Meeting | YES | 9/12 | 9/12 | Completed |
| 3-5 | | Legislative Subcommittee prepares Final Draft for Secretary Approval | No | 11/30 | 12/15 | Completed |
| 3-6 | | Legislative Subcommittee finalizes PgMP for Execution | YES | 12/15 | 12/30 | |



-FY 26 Program Management Plan

4. DESCRIPTION OF TASK AND ACTIVITY DELIVERABLES

Task #1: Provide limited liability for Special Districts by amending the State Trails Act (Section 16-3-9 NMSA 1978).

- **Activities 1.1:** Deliverable: Selection of the right legislation to amend.
- **Activities 1.2:** Deliverable: Successfully soliciting approval from special districts, injury lawyers, and legislators on-board with the amendment.
- **Activities 1.3:** Deliverable Description: Successfully promote the legislative body during the 2026 legislative session to approve the proposed Act language changes.

Task #2: Evaluate transfer of management and maintenance of trail segment of the state trail system back to the current land manager using alternate legal document.

- **Activities 2.1:** Deliverable: TBD

Task #3: Create an FY-26 Program Management Plan (PgMP).

- **Activities 3.1:** Deliverable Description: Develop a management approved PgMP template.
- **Activities 3.2:** Deliverable Description: Transmit the approved template to each Office subcommittee.
- **Activities 3.3:** Deliverable Description: Create the Office-wide DRAFT FY-26 PgMP.
- **Activities 3.4:** Deliverable Description: Conduct discussion and collect comments on DRAFT PgMP in upcoming September 2025 Commission Meeting.
- **Activities 3.5:** Deliverable Description: Prepare a DRAFT final for the Office to route to the Office of the Secretary for review, comment and approval.
- **Activities 3.6:** Deliverable Description: Incorporates comments from the Secretary's Office and prepare a final PgMP for FY-26 Office execution.



-FY 26 Program Management Plan

5. COST ESTIMATE WORKSHEET

| Task/ Act. # | Task Name | Activity Name/ Description | Equipment/ Materials (\$) | Travel & Living (\$) | Other Direct Costs* (\$) | Subcontractor Service Costs (\$) | Total Activity Cost |
|---|--|---|---------------------------------|----------------------------|--------------------------------|--|---------------------------|
| 1-1 | Amend State Trails Act (Section 16-3-9 NMSA 1978) | Develop Amendment language | | | | | |
| 1-2 | | Evaluate other avenues or if legislation is not required | | | | | |
| 1-3 | | Promote the Amendment | | | | | |
| Comments Task #1: | | | | | | | |
| 2-1 | Possible transfer of trail segments to current land owners | TBD | | | | | |
| Comments Task #2: | | | | | | | |
| 3-1 | Prepare Office FY-26 Program Management Plan | Develop DRAFT PgMP Subcommittee template | | | | | |
| 3-2 | | Subcommittee completes PgMP template | | | | | |
| 3-3 | | Legislative Subcommittee created DRAFT PgMP for Subcommittee review and comment | | | | | |
| 3-4 | | PgMP discussion in September Commission Meeting | | | | | |
| 3-5 | | Legislative Subcommittee prepares Final Draft for Secretary Approval | | | | | |
| 3-6 | | Legislative Subcommittee finalizes PgMP for Execution | | \$2,500 | | | |
| Comments Activity #3-6: Printing of final PgMP for EMNIRD and general distribution - 50 copies @ \$50 each | | | | | | | |
| SUBTOTAL ESTIMATED COST (\$): | | | \$2,500 | | | | |
| FY-26 ESTIMATED TOTAL COST (\$): | | | | | | | \$2,500 |

End



-FY 26 Program Management Plan

ATTACHMENT E NEW REALIGNMENT APPLICATION TEMPLATE



-FY 26 Program Management Plan



TRAIL SEGMENT DESIGNATION PROCESS & APPLICATION

RGT Segments:

Date of Submittal:
Submittal to: RGT Commission

Approval Date (RGT Commission):

Applicant Information

Name/Title:
Name/Title:

Email:
 Land Owner / Land Manager (Check which applies) / Other

If additional applicants:

Name/Title:
Email:
 Land Owner / Land Manager (Check which applies) / Other

Access

Public Access:
 Yes / No / With permit

User Groups (if not open to all the below groups, note alternate accommodation for those groups in the "Connectivity" section of the application):

Hikers / Bikers / Equestrians

Surfacing:
 Paved / Unpaved / Blue (water)

Universal Design/ADA Accessible:
 Yes / No / Partial

Difficulty:
 Easy (mostly flat & smooth) / Moderate (some elevation change) /
 Difficult (significant elevation change)

Traffic Flow:



-FY 26 Program Management Plan



TRAIL SEGMENT DESIGNATION PROCESS & APPLICATION

RGT Segments:

Barriers:

Signage:

Features:

Designation Type

Proposed/ Full Designation of through trail / Full Designation of spur trail (Check which applies)

(Note: Proposed Designation is for proposed future trail segments; Full Designation is for existing/constructed trail segments.)

RGT Segment for Designation (for future identification purposes)

| County | Jurisdiction | Segments | Existing Facility | Existing Facility Name | Miles | Application Type |
|--------|--------------|----------|-------------------|------------------------|-------|------------------|
| | | | | | | |
| | | | | Total | | |

Location/Description

Please describe the boundaries, extent, and relative location of the trail segment and how it relates to the Rio Grande Trail Corridor.

RGT Vision

How does this segment support the vision of the Rio Grande Trail?

Ownership

Is the segment in public ownership, or are necessary easements or agreements in place? If not, describe the plan for obtaining and/or managing the trail right-of-way.

Public Support



-FY 26 Program Management Plan



TRAIL SEGMENT DESIGNATION PROCESS & APPLICATION

RGT Segments:

Please indicate whether there has been any public outreach and whether there are any groups, organizations, or individuals that have demonstrated support for this trail segment.

Connectivity

Describe how this trail segment would provide continuity and/or connectivity within the overall Rio Grande Trailsystem.

Impact Studies

Have environmental impact studies and/or cultural surveys been conducted to understand the potential impacts of trail designation? How may the impacts support existing efforts, community visions, or regional planning? (Required for full designation, optional for proposed designation)

Capacity to Maintain

How will the trail segment be maintained, and by whom?

Public Safety

Indicate how public safety will be addressed.

Additional Documentation

Please provide any supporting documentation that would help the Commission evaluate your request as a separate attachment. This could include maps of the proposed route for designation, letters of support, resolutions from the respective municipality or county, existing planning studies, easement documentation, pictures of the trail, etc.



-FY 26 Program Management Plan

***ATTACHMENT F
TRAILS SEGMENTS DESIGNATION
APPLICATION FORM***



-FY 26 Program Management Plan



TRAIL SEGMENT REALIGNMENT APPLICATION

RGT Segments:

Date of Submittal:

Submittal to: RGT Commission

Approval Date (RGT Commission):

Applicant Information for Proposed New Alignment

Name/Title:

Name/Title:

Email:

Land Owner / Land Manager (Check which applies) / Other

If additional applicants:

Name/Title:

Email:

Land Owner / Land Manager (Check which applies) / Other

Accessibility

Public Access:

Yes / No / With permit

User Groups *(if not open to all the below groups, note alternate accommodation for those groups in the "Connectivity" section of the application):*

Hikers / Bikers / Equestrians

Surfacing:

Paved / Unpaved / Blue (water)

Universal Design/ADA Accessible:

Yes / No / Partial

Difficulty:

Easy (mostly flat & smooth) / Moderate (some elevation change) /

Difficult (significant elevation change)

Traffic Flow:



-FY 26 Program Management Plan



TRAIL SEGMENT REALIGNMENT APPLICATION

RGT Segments:

Barriers:

Signage:

Features:

Designation Type

Proposed/ Full Designation of through trail / Full Designation of spur trail (Check which applies)

(Note: Proposed Designation is for proposed future trail segments; Full Designation is for existing/constructed trail segments.)

RGT Segment for Designation (for future identification purposes)

| County | Jurisdiction | Segments | Existing Facility | Existing Facility Name | Miles | Application Type |
|--------|--------------|----------|-------------------|------------------------|-------|------------------|
| | | | | | | |
| | | | | Total | | |

Location/Description of Current Alignment

Please describe the boundaries, extent, and relative location of the trail segment and how it relates to the Rio Grande Trail Corridor.

Location/Description of Proposed New Alignment

Please describe the boundaries, extent, and relative location of the proposed new alignment of this trail segment and how it relates to the Rio Grande Trail Corridor.

Reason for New Alignment

Please describe the reasons for realigning this trail segment.



-FY 26 Program Management Plan



TRAIL SEGMENT REALIGNMENT APPLICATION

RGT Segments:

RGT Vision

How does this segment support the vision of the Rio Grande Trail?

Ownership

Is the segment in public ownership, or are necessary easements or agreements in place? If not, describe the plan for obtaining and/or managing trail right-of-way.

Public Support

Please indicate whether there has been any public outreach and whether there are any groups, organizations, or individuals that have demonstrated support for this trail segment.

Connectivity

Describe how this trail segment would provide continuity and/or connectivity within the overall Rio Grande Trail system.

Accessibility

What level of access/accessibility is anticipated for the general public and different user groups?

Impact Studies

Have environmental impact studies and/or cultural surveys been conducted to understand the potential impacts of trail designation? How may the impacts support existing efforts, community visions, or regional planning? (Required for full designation, optional for proposed designation)

Capacity to Maintain

How will the trail segment be maintained, and by whom?

Public Safety

Indicate how public safety will be addressed.



-FY 26 Program Management Plan



TRAIL SEGMENT REALIGNMENT APPLICATION

RGT Segments:

1. Additional Documentation

Please provide any supporting documentation that would help the Commission evaluate your request as a separate attachment. This could include maps of the proposed route for designation, letters of support, resolutions from the respective municipality or county, existing planning studies, easement documentation, pictures of the trail, etc.



-FY 26 Program Management Plan

ATTACHMENT G **AGENCY/STAKEHOLDER LETTER OF SUPPORT TEMPLATE**



-FY 26 Program Management Plan



RIO GRANDE TRAIL - LETTER OF SUPPORT

Your Name
Your Title / Organization
Address: City, State, ZIP
Email
Phone
Date

To Whom It May Concern,

I am writing to express support for the continued development and implementation of the Rio Grande Trail (RGT) and specifically for the advancement and designation of the following segment: **INSERT SEGMENT NAME OR LOCATION HERE.**

The RGT represents an extraordinary opportunity to enhance recreation, connectivity, and economic development across New Mexico. It serves not only as a recreational corridor for hiking, biking, and equestrian use but also as a vital cultural and ecological asset. This trail celebrates the Rio Grande, the lifeblood of New Mexico, and a river course that inspires and shapes our communities, cultures, and landscapes. The RGT provides a physical connection to protect, celebrate, and honor the river.

Completing and improving the trail—including **INSERT SEGMENT**—will provide residents with expanded access to safe, accessible outdoor spaces and create new opportunities for tourism, education, and small business growth. Local and statewide stakeholders have demonstrated interest in trail development, and investing in this infrastructure aligns with broader goals around climate resilience, public health, and community development.

I fully support the development of the **INSERT SEGMENT** and urge all relevant agencies, partners, and funders to prioritize its advancement as part of the Rio Grande Trail.

Sincerely,
Your Name
Your Title
Organization

X

John Doe

ATTACHMENT I: 2025 YEAR IN REVIEW





Rio Grande Trail Commission

Year in Review (2025)

Over the past year, the Rio Grande Trail Commission, along with its partners, made significant progress. During 2025, the team successfully designated six existing trail segments totaling nearly 40. This milestone represents a major step forward in the continued development of the Rio Grande Trail.

Following its three-year hiatus, the Rio Grande Trail Commission formally reconvened on April 21, 2025, reengaging stakeholders and reinvigorating efforts to advance official trail designation. The Commission quickly organized four subcommittees to address the diverse facets of trail development and management. These subcommittees include Tribal, Legislative, Alignment, and Nonprofit. Each subcommittee played a critical role in strengthening relationships with local communities, identifying pathways to pursue official trail designation, and building partnerships with key stakeholders.

The Commission met three times during the year in Truth or Consequences, Santa Fe, and Taos. These meetings were instrumental in rebuilding cohesion and guiding decision-making around future trail development. Convenings included site visits to potential Rio Grande Trail segments, informal pre-meeting gatherings to exchange ideas and strategies, and official Commission meetings to review progress and identify next steps. Meetings were initially held throughout various parts of the state to better spread the message and engage with different communities.

The non-profit subcommittee led an effort to secure governmental support and initiate the planning process for a non-profit entity that will ultimately steward the trail once it is fully established and officially recognized statewide. This is a critical step towards the long-term sustainability of the trail.

As a core component of the broader Rio Grande Trail Project, the Commission has been vital to advancing trail designation efforts and fostering collaboration among partners across the state whose expertise contributes to the successful implementation of this regional trail system.

In 2025, trail segments were designated in Bernalillo County, Taos County, Socorro County, and Sierra County. In addition, as a result of the reconvening of the commission, many other communities have expressed strong interest, support, and enthusiasm for the continued development of the Rio Grande Trail system. The commission will continue pursuing additional designation opportunities in 2026, further enhancing quality of life by increasing access to outdoor recreation and strengthening connections to the Rio Grande.

This work is only possible due to the hard work and dedication of community partners and other key stakeholders. The future of the Rio Grande Trail is brighter than ever. The commission will continue to build on this momentum in the continued pursuit of a continuous through route for the Rio Grande Trail.