



**22<sup>ND</sup>**  
**RIO GRANDE TRAIL**  
**COMMISSION MEETING**

---



# TABLE OF CONTENTS

---

<b>Commission Meeting Agenda – June 13 .....</b>	<b>3</b>
<i>Attachment A: Meeting Minutes - April 11th, 2025 .....</i>	<i>5</i>
<i>Attachment B: Subcommittee Purpose Statements .....</i>	<i>6</i>
<i>Attachment C: Revised Designation Application Template .....</i>	<i>7</i>
<i>Attachment D: New Realignment Application Template.....</i>	<i>8</i>
<i>Attachment E: Letter of Support Template.....</i>	<i>9</i>
<i>Attachment F: Trail Segment Designation</i>	
<i>Camino Real: Santa Fe River To Camino De Rey Road .....</i>	<i>10</i>
<i>Attachment G: Santa Fe Area Trails Map.....</i>	<i>11</i>
<i>Attachment H: Trail Segment Designation</i>	
<i>Cebolla Mesa, Taos.....</i>	<i>12</i>
<i>Attachment I: Carson National Forest Letter of Support .....</i>	<i>13</i>
<i>Attachment J: Trail Segment Designation</i>	
<i>A005, Truth or Consequences.....</i>	<i>14</i>
<i>Attachment K: City of Truth or Consequences Support .....</i>	<i>15</i>
<i>Attachment L: Sierra County Resolution 2025-35 .....</i>	<i>16</i>
<i>Attachment M: Sierra County Letter of Support .....</i>	<i>17</i>
<i>Attachment N: Trail Segment Designation</i>	
<i>Socorro Bosque River Trail.....</i>	<i>18</i>
<i>Attachment O: City of Socorro Letter of Support.....</i>	<i>19</i>
<i>Attachment P: MRGCD License Agreement .....</i>	<i>20</i>
<i>Attachment Q: MRGCD Letter Of Support.....</i>	<i>21</i>



# COMMISSION MEETING AGENDA – JUNE 13

---

## MEETING LOCATION

---

Friday, June 13, 9AM to 12PM in Pecos Hall at the Wendell Chino Building - 1220 S. St. Francis Dr, Santa Fe, NM 87505.

## MICROSOFT TEAMS CONFERENCING OPTION:

---

Link to join the meeting on-line: <https://www.emnrd.nm.gov/riograndetrailcommission/rgtcmeetings/>

Meeting number (access code): 2492 818 4356

Meeting password: FMpiuMMf775 (36748663 when dialing from a video system)

## CALL IN OPTION:

---

If you would like to join the meeting by telephone, please call: +1 505-312-4308 Toll Free.

When prompted, dial event number: 876 160 393#

## GENERAL INSTRUCTIONS:

---

During the meeting, please mute yourself unless you would like to speak. This will minimize background noise.

## AGENDA

---

1. Call to Order
2. Roll Call
3. Approval of Agenda
4. Approval of Minutes from 21st Rio Grande Trail Commission Meeting  
*> Attachment A: Meeting Minutes - April 11th, 2025*
5. Public Comment
6. New Business
  - a. Updates From the Chair (Chair Bajema)
    - i. Creation of the Office of the Rio Grande Trail
    - ii. Introduction of New Commissioner: Novela Salazar, New Mexico Tourism Department
  - b. Developing Sub-Committees / Work Groups  
*> Attachment B: Subcommittee Purpose Statements*
    - i. Formalize Creation of Subcommittees
  - c. Subcommittee Reports
    - i. Tribal (Commissioner Chacon)
      1. Meetings with Pueblo of Santa Ana, Pueblo of Sandia (Alignment Concerns: NM 165: Camino de Tecolote to NM 536)
      2. Scheduled meeting with Pueblo of San Felipe
3. Conversations about meeting with Pueblo of San Ildefonso, Santo Domingo Pueblo/ Kewa
  - ii. Alignment (Commissioner Carter)
    1. Trail Segments to be Prioritized
    2. Revised Designation Application  
*> Attachment C: "Revised Designation Application Template"*
    3. New Realignment Application  
*> Attachment D: New Realignment Application Template*
    4. Letter of support template  
*> Attachment E: Letter of Support Template*
    5. New Trail Segments
      - a. Overall Process & Community Engagement
        - i. Designation Criteria
        - ii. Scope of Community Engagement



## 6. Trail Segment Designations

### a. Camino Real: Santa Fe River to Camino de Rey Road

- > Attachment F: Trail Segment Designation- Camino Real: Santa Fe River To Camino De Rey Road
- > Attachment G: Santa Fe Area Trails Map

### b. Cebolla Mesa, Taos

- > Attachment H: Trail Segment Designation- Cebolla Mesa, Taos
- > Attachment I: Carson National Forest Letter of Support

### c. A005, Truth or Consequences

- > Attachment J: Trail Segment Designation - A005, Truth or Consequences
- > Attachment K: City of Truth or Consequences Support
- > Attachment L: Sierra County Resolution 2025-35
- > Attachment M: Sierra County Letter of Support

### d. Socorro Valley Bosque Trail

- > Attachment N: Trail Segment Designation - Socorro Bosque River Trail
- > Attachment O: City of Socorro Letter of Support
- > Attachment P: MRGCD License Agreement
- > Attachment Q: MRGCD Letter Of Support

## iii. Legislative (Commissioner Davidson)

1. **2026 Legislative Proposal Development: Amending the Rio Grande Trail Commission Act to release liability for special district for public usage of trail**

hosted on their land.

2. Meetings with MRGCD; EBID; legislators

iv. Creation of RGT Non-Profit (Commissioner Gross)

v. RGTC Program Management Plan (Commissioner Temchin)

## d. Miscellaneous

i. May 2nd-3rd 2025 Doña Ana County stakeholder meetings

## 7. Announcement of Next Meeting

a. Discussion: Discussion: Friday, September 19, Taos

i. Early November: Strategic planning session, Albuquerque

b. Which communities should we meet in?

## 8. Public Comment

## 9. Adjournment



# ATTACHMENT A: MEETING MINUTES - APRIL 11TH, 2025

---



## 21<sup>st</sup> Rio Grande Trail Commission Meeting – Minutes

Friday, April 11, 2025 // 9 AM – 12 PM

Truth or Consequences Civic Center - 400 W 4th St, Truth or Consequences, NM 87901

FULL MEETING TRANSCRIPT: [2025 4 14 RGTC Meeting Notes.docx](#)

### Commissioners Present:

- Ben Bajema – OFS Senior Advisor, EMNRD (Chair)
- Karina Armijo – Outdoor Recreations Division Director, EDD
- Shannon Glendenning – Urban & Regional Planner, DOT
- Holly Kelley – Tourism Development Director, TD
- Dan Carter – Continental Divide Trail, Trail Mgmt.
- Toby Velasquez – SPD Division Director, SPD
- Steve Harris – Rio Grande Restoration, River Eco
- Tucker Davidson – Audubon Society, Bird Eco
- Howard Gross – HG Conservation Solutions, Public 1
- Myron Temchin – Temchin Environmental Planning, Public 2

### Commissioners Absent:

- Michael Chacon – Tribal Environmental Justice Specialist, IAD

### 1. Call to Order

Chair Bajema called the meeting to order.

### 2. Roll Call

All Commissioners present introduced themselves. Carl Colonius, who is not a commission member, also introduced himself.

### 3. Approval of Agenda

Chair Bajema: requested a motion to approve the agenda.

Commissioner Velasquez: made a motion. Another commissioner made a second.

**Chair Bajema voted to approve the agenda.**

### 4. Approval of Open Meetings Act Resolution

Chair Bajema: requested a motion to approve the Open Meetings Act Resolution.  
Commissioner Velasquez: made a motion.

Another commissioner made a second.

**Chair Bajema voted to approve the agenda.**

Commissioner Glendenning noted the need for all commissioners to vote in order to approve something.

**Chair Bajema requested all in favor to approve.**

**Commissioner Carter requested discussion.**

**Chair Bajema approved.**

Commissioner Carter noted that the 10-day notice for meetings, as required in the Open Meetings Act, is not sufficient.

Chair Bajema noted that 10 days is a requirement but agreed that more notice could be given.

Other commissioners supported the encouragement of providing notice sooner than 10 days ahead of the meeting but also did not want to be prescriptive. 30-day notice was discussed.

**Chair Bajema returned to the motion to approve the Open Meetings Act Resolution as written.**

**He received a second**

**The Open Meetings Act Resolution passed with unanimous support.**

5. Approval of Minutes from the May 17, 2022, Rio Grande Trail Commission Meeting

Chair Bajema introduced the minutes from the last commission meeting almost three years ago. He noted that there was interest in discussion.

Commissioner Temchin noted that the minutes are old and much has changed since the meeting was held. He asks about the actions recommended to be taken by the commission at that last meeting.

Chair Bajema clarifies that approving these minutes only means that the minutes accurately capture the spirit of the meeting. It does not hold the commission to any decisions made at that meeting.

Multiple commissioners note that there is still no trail alignment on tribal land while agreeing that conversations with tribes should continue.

Commissioner Carter wanted to highlight that the conversation about amending the minutes occurred at this meeting due to ambiguity in the minutes.

Chair Bajema notes that there is no known recording of the May 17, 2022 meeting.

Commissioner Temchin also asked about the funding for the Rio Grande Trail. Carl Colonius noted that Pland Collaborative was hired with those funds.

Commissioner Velasquez made a motion to approve the minutes as drafted.

Commissioner Glendenning: second.

**Chair Bajema called for a vote. The majority voted yes.**

**Commissioner Temchin: nay.**

**Commissioner Gross: abstained due to not being up to speed.**

**Chair Bajema noted that the motion passed, and the minutes were approved.**

## 6. Public Comment

Chair Bajema requests that comments be kept to 1-2 minutes per person.

June Russett: Tree New Mexico, Regional Planting Coordinator: They want to plant more trees in the area.

Kimberly Calkins: Executive Director, Insights Science Discovery: Introduced themselves and said they were excited about the partnership.

Rolf Hechler: Mayor, Truth or Consequences: Welcomed everyone. Noted the 75<sup>th</sup> anniversary celebration on May 2-4. Shared that the City recently approved three miles of proposed Rio Grande Trail and hoped that Sierra County would do the same.

Marcia de Chadenedes: happy to see the commission meeting again. I strongly support the idea of engaging with the tribes up front.

Kim Skinner: Mayor of Elephant Butte: have a small section of trail that runs through the community.

## 7. New Business

b. Keynote Speaker: Teresa Martinez – Executive Director, Continental Divide Trail Coalition

i. Topic: The Role of Non-Profits in Interstate Trail Management: A Perspective from the Continental Divide Trail

Teresa Martinez shares insights from the Continental Divide Trail Coalition, emphasizing the importance of public-private partnerships in trail stewardship.

She highlights the historical context of trail stewardship in the U.S. and the significance of the National Trail System Act of 1968.

Teresa discusses the cooperative stewardship model, which involves federal agencies, trail communities, and partners working together to manage long trails.

She shares the success of the Continental Divide Trail Coalition in raising significant private funding to complement federal support.

Teresa encourages the Rio Grande Trail Commission to adopt a similar cooperative stewardship approach and emphasizes the importance of community engagement and relationships.

Chair Bajema thanked Teresa.

c. Updates from the Chair

i. W-9's

Chair Bajema: Fill them out and send them back to me

ii. Tribal Engagement

Chair Bajema: We sent letters to all 24 tribes, nations and Pueblos in the state of New Mexico. We received messages back from Sandia, San Ildefonso, and San Felipe. We will continue to reengage tribes on the topic of the trail.

iii. 2026 Legislative Proposal Development

1. Amending the Rio Grande Trail Commission Act to release liability for special districts for public usage of trail hosted on their land.

Chair Bajema: Ambitions for the 2026, New Mexico legislative session: There are some challenging segments of the trail where we cannot designate it because the Conservancy District who owns and manages those segments, e.g. the Middle Rio Grande Conservancy District. There's an issue with liability. What does limiting liability for these special conservancy districts look like for the trail?

## 2. Recreational Use Statute

### d. Presentations

#### i. Carl Colonius, Program Manager, ORD

##### 1. Roles and Responsibilities of the Commission, ORD, Pland and other partners

##### 2. Regional Outdoor Recreation Council

Carl Colonius discusses the role of the Outdoor Recreation Division and the work done by Plan Collaborative in refining the trail alignment and engaging with communities.

The importance of creating a nonprofit to support the Rio Grande Trail is emphasized to ensure sustainability and consistency.

Chair Bajema thanked Carl.

#### ii. Pland Collaborative (Contractor, ORD)

##### 1. Introduction of Rio Grande Trail (RGT)

Katrina from Pland Collaborative presents the vision and planning principles for the Rio Grande Trail.

The trail is described as a recreational trail for hiking, biking, and equestrian use, connecting diverse natural habitats, rich history, and vibrant communities.

The trail passes through various significant areas, including national forests, national parks, and state parks.

The planning process involves working with local communities and agencies to refine the trail alignment and ensure public support.

The presentation includes a timeline of the trail planning and designation process, highlighting the progress made so far and the future steps.

#### e. Developing Sub-Committees / Work Groups

Katrina Arndt: The last commission had various work groups and subcommittees that dealt with alignment, public engagement, infrastructure, etc. These are all groups or subcommittees that could be revived again.

Commissioner Glendenning: Remove red to green as a continuum because of color blindness for folks. 8% of people are red-green color blind. List roadways as interim designations or alignments, because they're high-speed.

Katrina Arndt: Thank You.

Commissioner Carter: Add **sovereign nations to list of partners; make sure federal public land agency representatives attend our meetings; explore the interagency MOUs; consider Blue Trails, using the actual river as our public access.**

What's the plan to accommodate the other primary uses?

Katrina Arndt: We are working with Dona Ana County and the IBWC on a potential MOU to streamline any development or any trail in Dona Ana County.

Chair Bajema: At our next commission meeting, we will be talking about subcommittees and developing new ones or revitalizing old ones. Thank you for bringing up our federal counterparts. We did reach out to them, but it was too late. For our next commission meeting, we will be sure to reach out.

Commissioner Temchin: Question on your trail designation application process: is the RGTC involved in this before we get the application? It looks like ORD and Pland go all the way through, select the routes, talk to partners, fill out the application, and we get these papers.

Chair Bajema: What the commission is doing is designating trail, that is our expressed legislative mandate. There is nothing precluded us from being involved, but it's not our official duty to be involved in the pre-application process. Pland is going to work with subcommittees, and if we have an alignment subcommittee, that would be a great place to get involved in pre-designation planning.

Commissioner Temchin: So, the letter then that you wrote to all the governors was sort of opening the door for ORD and Pland?

Chair Bajema: And the Commission too. It is not our official capacity, but it is certainly something I would like commissioners to be a part of.

## 8. Action Items

### i. Approval of Designation of the Following Trail Segments:

1. City of Albuquerque & Bernalillo County: Paseo del Bosque Trail, Riverside Trail, Chris Chavez Trail, Valle de Oro Trail.

Trail Segments: BN-02 to 07, some of 08

Total Mileage: 22.4 miles

Dan Majewski, Pland Collaborative: Presented the first trail segment for approval, the Paseo Del Bosque trail in Albuquerque.

The segment is described as a multi-use trail with abundant existing infrastructure.

Discussion ensues about the uses allowed on the trail. It was asked if equestrians were allowed on this trail. Carl Colonius confirmed that equestrians, hikers, and bikers are all allowed to use this trail.

Commissioner Gross requested **better summaries of the public support for the applications.**

Katrina Arndt noted that this trail was from the approved Master Plan, which went through a public process. Additionally, when this was approved by the City of Albuquerque and Bernalillo County, there was no opposition voiced.

Commissioner Glendenning requested **mapping existing infrastructure, like bike racks, water, etc. for future applications.**

*A couple of members of the public commented. The Chair reminded them that this was a commission conversation and that time for public comment is included at the end of the meeting.*

**Chair Bajema requested a motion to designate City of Albuquerque & Bernalillo County: Paseo del Bosque Trail, Riverside Trail, Chris Chavez Trail, Valle de Oro Trail as Rio Grande Trail.**

**Commissioner Carter seconded the motion.**

Roll Call Vote:

**Commissioner Carter – YES**

Steve Harris – Asked if equestrians were permitted on this section of trail.

Carl: Yes, according to the trail website.

**Commissioner Harris – YES**

**Commissioner Temchin – YES**

**Commissioner Glendenning – YES**

**Commissioner Velasquez – YES**

**Commissioner Kelley – YES**

**Commissioner Davidson – YES**

**Commissioner Armijo – YES**

**Commissioner Gross – YES**

**Chair Bajema – YES**

**With unanimous consent, this motion is approved.**

Multiple commissioners requested that future applications note which uses are permitted on that particular section.

2. Taos County: Cebolla Mesa

Trail Segment: TS-01-D

Total Mileage: 1.26

Dan Majewski, Pland Collaborative: presented the second trail segment for approval, the Cebolla Mesa trail in Carson National Forest.

The segment is described as an existing trail with a recently completed bridge connecting it to another segment of Rio Grande Trail that has already been designated.

Discussion included:

- ADA accessibility/general accessibility criteria: much of the trail will not be ADA accessible, including this section.
- Importance of clear communication about allowed uses: e-bikes and bikes in general were specifically mentioned.
- Community conversations: there have been conversations about this existing in-use trail segment and no significant opposition was voiced.
- La Junta Trail rehab: an engineering grant has been provided through Trails+ and hopefully it will be back open by 2027.
- Conversations with Carson National Forest: Pland noted that there had been conversations with them and that they are generally supportive of approving this particular trail segment.
- The process of approving trail segments: multiple commissioners noted that would prefer approving trail for designation if the land manager of that area approved it first by providing something in writing, e.g. a letter of support. An MOU was mentioned as another method for partnership and approval.

- Wayfinding/signage: Pland will present their signage plan at the next commission meeting.

**Commissioner Glendenning: Mr. Chair. I move that we table action item number two to a future meeting where we include letters of support from the planning agency, as well as environmental documentation.**

**Chair Bajema: Second?**

**Second from another commissioner.**

Roll Call Vote:

**Commissioner Carter – YES, for the motion to table.**

**Commissioner Harris – YES**

**Commissioner Temchin – NO**

**Commissioner Glendenning – YES**

**Commissioner Velasquez – YES**

**Commissioner Kelley – YES**

**Commissioner Davidson – YES**

**Commissioner Armijo – YES**

**Commissioner Gross – YES**

**Chair Bajema – NO**

**So this motion is taken. The motion to table action item number two regarding the Cebolla Mesa Trail is approved.**

Chair Bajema: I agree that we need to do a better job at providing commissioners with background documents. However, this trail is already established, and people are using it.

3. Turtleback Ave (A005), Truth or Consequences, Sierra County

Trail Segment: SR-05-B

Total Mileage: 3.79

Dan Majewski, Pland Collaborative: presented the third segment of trail approval: Turtleback Avenue, or Country Road A005. It is a part of the Turtleback Trails

Network, a group working to get more trail access in Sierra County and in the city of Truth or Consequences. This particular segment is currently an unpaved road.

Discussion:

- Jurisdiction of the road/trail segment: it falls under the jurisdiction of the county because it's an existing County Road.
- Easement for road use: as this road passes through some sections of private land, the county has an easement for use of this road through private land. There was a request to see a copy of the easement itself. There were questions about the terms of the easement approval (is it perpetual or time bound).
- Level/type of current use on this road: runners, hikers and cyclists are known to currently use it. The observed traffic volume is low.
- Reason for this alignment/use of a road for the trail: this section was recommended because it is part of the existing Turtleback Trail Plan. This was not the original alignment from the master plan so a realignment application for this section should be completed.
- User groups: make sure we know who the trail can and should be used by before approving it.

Commissioner Carter: **I would motion to table this** and revisit it at the next meeting with more information.

Commissioner Carter: **I'll motion again to table this until this next meeting.** Get some more information on the easement and the other questions, maybe the interim versus final alignment.

**Commissioner Harris (most likely): Second.**

**Roll call vote:**

**Commissioner Carter – YES**

**Commissioner Harris – YES**

**Commissioner Temchin – YES**

**Commissioner Glendenning – YES**

**Commissioner Velasquez – YES**

**Commissioner Kelley – YES**

**Commissioner Davidson – YES**

**Commissioner Armijo – YES**

**Commissioner Gross – YES**

**Chair Bajema – YES**

**This motion is approved unanimously. This item is tabled until the next meeting.**

a. Develop the Rio Grande Trail commission office

Chair Bajema: We have one more action item on our agenda today: development of the Rio Grande Trail Commission Office.

Two years ago, the Rio Grande Trail Commission was funded through a budget appropriation to EMNRD for \$75,000, recurring annually. Last year, it was changed to a one-time appropriation of \$225,000 for the development of the Rio Grande Trail Commission office. There are no specifics as to what that money is to be used for.

This past legislative session, the team at EMNRD attempted to get that language changed back to the \$75,000 annual appropriation to support the commission. It didn't make it into the budget. However, **we were successful in getting the \$225,000 reauthorized for the development of the Rio Grande Trail Commission office.** So essentially, we as a commission, if we are to vote yes to developing this Rio Grande Trail Commission office, it will live in EMNRD, in my office, and it allows us access to that \$225,000 to pay for the travel of the commissioners, to pay for signage, swag and for a contractor to help us put these meetings together, because I'm not able to do that. But we are unable to establish that money until we have an office to do that.

Discussion:

- How the funds can be used: the language is vague so the funds can be used for whatever the commission requires, e.g. travel, professional contractual services, other operational needs, signage or other on the ground type improvements, etc.
- Q: How long will the \$225,000 be available? A: It is a one-time, one-year appropriation. However, if the money gets encumbered under a potential three-year contract for professional services to support Rio Grande Trail Commission, there's a very good possibility those monies could be reauthorized by the legislature. But we would have to ask for reauthorization.

- Funding is often performance based: If the legislature sees action from the commission, they are more likely to continue funding it.
- Commissioner Temchin volunteered to develop a 12-month action plan with goals and milestones to guide the use of the funds.
- Funds become available on July 1, at the beginning of the State of New Mexico fiscal year.

**Commissioner Velasquez: Mr. Chair, I make a motion to approve the development and creation of the Rio Grande Trail Commission Office.**

**Commissioner Carter: Second.**

Roll Call Vote:

Commissioner Gross: I'm supportive in concept, but not a lot of guidelines or explanation. What does this office look like? Does it cover your salary?

Chair Bajema: My salary is not covered by this funding.

Commissioner Gross: If we're setting up an office we should have a purpose statement. I'm just thinking something more than six words.

Commissioner Temchin: I think all that could be in the plan.

Commissioner Velasquez: Mr. Chair, I believe that the office of the Rio Grande Trail Commission is to support the Commission's authority under the Rio Grande Trail Act, to define and recommend viable back routes of the Rio Grande Trail, recommend features, facilities and enhancements needed on the trail, making recommendations to the legislature and handing reports to the governor and the appropriate interim committees. Thank you.

Chair Bajema: We can formalize this language through the creation of this office. Would that work for you Howard?

Commissioner Gross: Yes

Commissioner Glendenning: Process wise, amend your motion to what you just said.

Commissioner Velasquez: I'll amend my initial motion, Commissioner, per the rules of the procedure. As I stated, it is on the record and to provide in written format to plan to commit to the meeting minutes.

**Amended Motion: Commissioner Velasquez: Mr. Chair, I make a motion to approve the development and creation of the Rio Grande Trail Commission Office. I believe that the office of the Rio Grande Trail Commission is to support the Commission's authority under the Rio Grande Trail Act, to define and recommend viable back routes of the Rio Grande Trail, recommend features, facilities and enhancements needed on the trail, making recommendations to the legislature and handing reports to the governor and the appropriate interim committees.**

Chair Bajema: Perfect. Do we have a second?

**Commissioner Temchin: Second**

**Commissioner Carter – YES, as amended**

**Commissioner Harris – YES**

**Commissioner Temchin – YES**

**Commissioner Glendenning – YES**

**Commissioner Velasquez – YES**

**Commissioner Kelley – YES**

**Commissioner Davidson – YES**

**Commissioner Armijo – YES**

**Commissioner Gross – YES**

**Commissioner Bajema – YES**

**The motion is approved.**

Commissioner Temchin: We could develop a planning subcommittee and at the next meeting present a draft plan. Get input from the public, get input from the commissioners, revise the plans on July 1, all the subcommittees are running, understanding what their individual goals and objectives are. I'd like to suggest we form a planning subcommittee, before July 1. Let's get a draft plan done.

## 9. Discussion

### a. Gateway community designation

Carl Colonius introduces the concept of gateway communities and their symbiotic relationship with the trail. Example: Waterworks facility, Silver City. It is an access point to the Continental Divide Trail.

Myron Temchin provides an example of the Buffalo Tract Recreation Area and its value as a destination point for Sandoval County/ Bernalillo.

Commissioner Armijo: Some of the things that we've talked about today, like process, clarification, additions to applications, NEPA or community engagement; when do we decide on what the appropriate response to some of the things that came up to today?

Chair Bajema: I believe that that will be covered in subsequent meetings, is my understanding.

Commissioner Carter: With the CDT and gateway communities, that the communities come to us, very much a community-based process.

Commissioner Harris: I think that there needs to be some set of criteria for gateway community designation.

Commissioner Glendenning: I think it'd be most appropriate to create a gateway community subcommittee.

#### 10. Announcement of the Next Meeting

**The next Rio Grande Trail Commission meeting will be held on Friday, June 13, 9 AM – 12 PM in Santa Fe.** We will be in touch more than 10 days in advance. We will decide on the location soon.

Commissioner Carter: How and who will be putting the agenda together?

Chair Bajema: So, I will be working closely with Pland Collaborative, the contractor working on the section alignments. I will also reach out to members of the commission to get input on the on the agenda.

And then, just as an announcement for everyone, after this meeting we will be getting lunch at El Faro. We'll take a quick break and come back to public comment.

BREAK

#### 11. Public Comment

Becca Eza: good morning. My name is Becca Eza. I'm a resident of TorC. I am also on the board of the Southern New Mexico Trail Alliance, and I'm the Executive

Director of Main Street Truth or Consequences. So kind of with those things converging, I would like a quick plug for TorC as consideration for a gateway community, when we get to that point. We have an amazing small downtown full of amenities for trail users, great outfitter, a little grocery store, restaurants, a brewery, lodging, Hot Springs to soak in. Working with a trail system here, and as director of main street, I would love to help facilitate that.

Chair Bajema: Thank you so much, Becca. How could we better collaborate with Main Street to get that designation in place?

Becca Eza: I would need to talk with my board first. You know, specifically focused on the downtown area, a small town with the trail so close, economic development to the downtown. So, I think that Main Street would be more than willing to be the point of contact for that. I think when you guys get the application system in place, we will fill out the form for that.

Kim Skinner: Mayor of Elephant Butte: Thank you again for coming again. I'm also the chairperson for the Sierra County Recreation and Tourism Board. That's the entire Sierra County. So, thank you for coming. I've been involved with the Rio Grande Trail Commission for years, and I was sad that kind of went away post COVID. But thank you, Becca, for bringing that up. She's on the trail committee with me. Yes, Truth or Consequences would love to become a gateway community. I'm also the president of the Geronimo Trails National Scenic Byway. So that comes from Emory Pass, down through Caballo, along the river, back up to Winston and then back over to Beaverhead. We cross the continental divide twice. We have a volunteer from our visitor center here today too. But obviously, we want to be partners. So, thank you, and reach out to Becca and all of us if you need anything.

John Masterson: Hello again. Quick story, my wife and I, working in Seattle, almost 10 years ago, we came through Truth or Consequences and fell in love with the town. And part of it was we just looked across the river. We saw those trails and said, look how close this is. We've been to other towns like Salida, Colorado and Boise, Idaho, that had a great trail system that was right on the edge of town. So it was with that experience that I helped form a steering committee that became the Turtle Back Trails Network concept plan. This is a plan that was organized by the National Park Service, and it's endorsed and approved by both the city of TorC and the Village of Williamsburg. On the first page somewhere, it says we believe that a great trail system can make our community both healthier and wealthier. And TorC actually has a history of being a city of health. This is prior to the name change the health capital of the southwest. So we are, of course, super excited that the RGT is

coming through, but reconstituted and thank you for doing your thing in Truth or Consequences and look forward, thank you.

Senator Jeff Steinborn: Hey everybody, good to see you. I'm the state senator from Las Cruces and I'm the author of Rio Grande Trail app. This has been a really intelligent discussion. First of all, I've seen every iteration of the Rio Grande Trail Commission. I will say this is the most informed, experienced, the best commission I've seen given the entire iteration just to people who are well informed and passionate about this work, and your questions demonstrated it, so you go.

Number two, I just want to be honest, we have been slow on progress and it's really kind of unacceptable. The law mandates three commission meetings a year. The state set a project, a 500 mile trail. We have two years left in this administration here, an incredible group of people you've got, I have been you Ben and Karina and tell me, the leadership that you have in Carl is also exceptional. But you gotta understand, this is a proactive exercise. This is not an exercise, in my opinion, Mister Chair, I would just say, they gotta come to us and put everything in the bow. And the mission of this is for you to go up to them in a way. I think you'll see in every community, go to this level of enthusiasm. They want to be active. They want the opportunity. It's our job to kind of put it all together. And so I would just urge you, as commissioners, it's kind of the board of directors, really be aggressive, drive the bus. Myron, I love all your questions, all your suggestions. It just goes to show you how much work is ultimately needed to bring this full vision. But right now, we've got to designate trail. We got a work out solution, so then we have a lot of work to do. along those lines. Mr. Chair, I haven't just I love the frontier community concept, because I see that as a very powerful inducement to communities that have a real investment and wanting to be a part of it. I did have a question on the elephant butte alignment. We have some constituents here who opened up more business, and I think they had a lot. They had a similar question I had, which is, you know, why was that particular segment recommended on road? Was it the only segment available, as opposed to a more natural segment, not on the road. I think part of the goal is to develop a very scenic trail, right? Not just a trail for trail purposes, but something that's scenic experience, and ultimately can receive National Trail designation, so that I've been touching. Well, this definitely the option there's up there for natural options. The best option. Thank you all.

Chair Bajema: Thank you, Senator. We're going to be looking at that segment and making sure that you know to our questions about easement, to make sure that that

really is the best way. So, thank you for your comments, questions, and we hope to make you proud. We're having three meetings this year without a doubt. Thank you.

Kimberly Calkins: Executive Director, Insights Science Discovery: Hello again. I'm here in two capacities now that I've listened to all of the comments and questions, which is great, I'm taking copious notes so that when we become a gateway community, I'll be ready. Recently, I completed the Camino de Santiago Trail, which is 500 miles. So, I look forward to doing this one as well. About that is the trail was, it had horses, it had bicycles was on it. Occasionally it was passed by someone on a motorcycle, which was not authorized, but they're out there, and copious amounts of people walking the either on the 100 kilometers or the whole 800 kilometers. So using apps, people figured out what part they can complete. You know, sometimes, I mean, I didn't think I was going to be able to get over some of those big, giant hills or the terrain. Some of it was on roads. Some of it was highway roads. Some of it was little, skinny trails going through trees. Don't underestimate the people who want to come to this trail, because if they want it, they'll make it happen. And you're providing this great opportunity, and your questions on accessibility is great. It's something I definitely want to think about. We merged with Dino Track, and because I think that's going to happen, it's on my agenda now, and so thinking about these things is very important. But again, people are going to come so don't give up. And I look forward to working with you all. Thank you.

Marcia de Chadenedes: Recently, just last week, retired Federal employee and I've worked in the last 30 years with similar projects, and I can say you guys are the vision of this trail. Commissioners are carrying the vision of this trail. It's a great responsibility and the fact that you're expecting to have all these administrative understandings as well as quite a challenge for you. I totally recognize your efforts. We strongly recommend that you recognize the value of a nonprofit organization to support your interests, whether you have one as a hub, maybe coming out of state recreation and trails, and perhaps there's an organization there that could be the overarching umbrella, or it's just that the spirit of the trail is the people who walk it, and those people will volunteer, and do your work for you. You build a trail that is designed with them, not for them. With them, they'll support you all the way, and as Teresa shared seven times the money. So I suggest you consider that this have an organization Pland that is doing this work for you, that you tap into their outreach to identify team members of communities on the trail, maybe people who would be interested in pulling together an organization to support the trail, and also they consider investing a small amount of your moneys into an organization that already is in that Trail Association, like the CDTC to mentor the organization, give them the

gateway communities. There's a handout description for all these kinds of things, all the kinds of considerations that go into designing trails. They've got it, you don't have to reinvent the wheel. So, your office, your office is virtual because you want to share your documents, you want to share your Zooms and all those things. Think about the investment that they saved and not having to house anything, not having to send anybody. And then congratulations, thank you.

Patrick Bower: I moved here about a decade ago because of trails. I attempted CDT in 2018. I've had multiple session hikes on the Appalachian Trail. First of all, I applaud you all. I think it's great. I think it's necessary. And what I would encourage you to do, having spoken about the AT, is find your Earl Shaffer. Find your Trailblazer. Find the guy that's not to worry about the alphabet soup of governmental agencies he's going to put a spot on the back of his backpack. He's going to start up north. He's going to take the sections that you guys have in place now, and he's going to tread over the rest of it. Will it cause some problems? Probably. But you find that individual who really wants to hit this hard, save the map. Work with you guys, you'll hit that plan, absolutely. I think it's how you decide the organize it, and I think it's how you decide to bring it in. Who you going to bring? Find your Earl Shaffer. Thank you

Chair Bajema: And with that, we're running up on time. So right now, we're going to go to lunch at El Faro, and then after that. And after that at 1 PM, we are going to walk the section, maybe not the entire section, but a portion of the section.

OJ: So we're going to meet at Rotary Park, that is going to be on the west side of the river County Road, A005. The segment that we were talking about earlier, about designing that part of the River trail is on the east side. So, but we kind of wanted to show you guys the vision of the turtle back Trails Network plan that we've got, why there's a need for a pedestrian bridge, and how we can tie all that in together. So for those of you that do want to go visit County Road A005, Third Street, right here, stop light, go all the way straight. Second bridge, take a right, and then you'll hit dirt road and you'll follow it around the river, and that will be County Road A005.

Chair Bajema: Thank you for your hospitality. Thank you for all the questions too. Thank you, commissioners, for your time today. We really appreciate it.

## 12. Adjournment

**Commissioner Velasquez: Mr. Chair, motion to adjourn at 12 noon.**

**Second.**

**All those in favor: all said aye.**

**Opposed: none**

**The motion passes. We are adjourned.**

# ATTACHMENT B: SUBCOMMITTEE PURPOSE STATEMENTS

---





## **Draft Purpose Statements: Rio Grande Trail (RGT) Subcommittees**

Below are draft purpose statements for the various subcommittees. We hope to have each subcommittee review these and revise them as appropriate.

### **Tribal:**

The Tribal Subcommittee was created to represent tribal interests and ensure trail-related decisions are informed by tribal perspectives. The subcommittee provides input on current and future trail alignments, offers a forum to raise concerns and opportunities, and helps share trail-related information with tribal communities.

### **Alignment:**

The Alignment Subcommittee was established to guide the development, identification, and designation of trail alignments for the RGT. The subcommittee will help set priorities for trail segment designations and identify existing and future alignments to be considered for inclusion in the master plan trail system.

### **Non-profit:**

The Non-profit Subcommittee was created to lead the development of a long-term framework to support the RGT. This subcommittee will explore and recommend a sustainable organizational structure to help build capacity, coordinate resources, and ensure the trail's ongoing development, management, and stewardship for years to come.

### **Legislative:**

The Legislative Subcommittee was established to champion and support legislative efforts related to the RGT. This committee will help guide, recommend, and advance legislative actions needed to implement the trail, support its development, and build long-term capacity.

# ATTACHMENT C: REVISED DESIGNATION APPLICATION TEMPLATE

---





## TRAIL SEGMENT DESIGNATION PROCESS & APPLICATION

RGT Segments: xx-xx

**Date of Submittal:**  
**Submittal to:** RGT Commission

**Approval Date** (RGT Commission):

### **Applicant Information**

**Name/Title:**  
**Name/Title:**

**Email:**  
 Land Owner /  Land Manager (Check which applies)

**If additional applicants:**

**Name/Title:** BLM  
**Email:**  
 Land Owner /  Land Manager (Check which applies)

### **Accessibility**

**Public Access:**  
 Yes /  No /  With permit

**User Groups:**  
 Hikers /  Bikers /  Equestrians

**Surfacing:**  
 Paved /  Unpaved

**Grades/Tread:**

**Traffic Flow:**

**Barriers:**

**Signage:**

**Features:**



## TRAIL SEGMENT DESIGNATION PROCESS & APPLICATION

RGT Segments: xx-xx

### Designation Type

Interim/  Full Designation (Check which applies)

*(Note: Interim Designation is for proposed future trail segments; Full Designation is for existing/constructed trail segments.)*

### RGT Segment for Designation (for future identification purposes)

County	Jurisdiction	Segments	Existing Facility	Existing Facility Name	Miles	Application Type
				<b>Total</b>		

### Location/Description

*Please describe the boundaries, extent, and relative location of the trail segment and how it relates to the Rio Grande Trail Corridor.*

### RGT Vision

*How does this segment support the vision of the Rio Grande Trail?*

### Ownership

*Is the segment in public ownership, or are necessary easements or agreements in place? If not, describe the plan for obtaining and/or managing trail right-of-way.*

### Public Support

*Please indicate whether there has been any public outreach and whether there are any groups, organizations, or individuals that have demonstrated support for this trail segment.*

### Connectivity



## **TRAIL SEGMENT DESIGNATION PROCESS & APPLICATION**

RGT Segments: xx-xx

*Describe how this trail segment would provide continuity and/or connectivity within the overall Rio Grande Trail system.*

### **Impact Studies**

*Have environmental impact studies and/or cultural surveys been conducted to understand the potential negative impacts of trail designation? How will impacts be addressed or mitigated? (Required for full designation, optional for interim designation)*

### **Capacity to Maintain**

*How will the trail segment be maintained, and by whom?*

### **Public Safety**

*Indicate how public safety concerns will be addressed.*

### **Additional Documentation**

*Please provide any supporting documentation that would help the Commission evaluate your request as a separate attachment.*

# ATTACHMENT D: NEW REALIGNMENT APPLICATION TEMPLATE

---





## **TRAIL SEGMENT REALIGNMENT APPLICATION**

RGT Segments:

**Date of Submittal:** XX  
**Submittal to:** XX

**Approval Date** (RGT Commission):

### **Applicant Information for Proposed New Alignment**

**Name/Title:**  
**Name/Title:**

**Email:**  
 Land Owner /  Land Manager (Check which applies)

**If additional applicants:**

**Name/Title:**  
**Email:**  
 Land Owner /  Land Manager (Check which applies)

### **Accessibility**

**Public Access:**  
 Yes /  No /  With permit

**User Groups:**  
 Hikers /  Bikers /  Equestrians

**Surfacing:**  
 Paved /  Unpaved

**Grades/Tread:**

**Traffic Flow:**

**Barriers:**

**Signage:**

**Features:**



## **TRAIL SEGMENT REALIGNMENT APPLICATION**

RGT Segments:

### **Designation Type**

Interim/  Full Designation (Check which applies)

*(Note: Interim Designation is for proposed future trail segments; Full Designation is for existing/constructed trail segments.)*

### **RGT Segment for Designation (for future identification purposes)**

County	Jurisdiction	Segments	Existing Facility	Existing Facility Name	Miles	Application Type
				<b>Total</b>		

### **Location/Description of Current Alignment**

*Please describe the boundaries, extent, and relative location of the trail segment and how it relates to the Rio Grande Trail Corridor.*

### **Location/Description of Proposed New Alignment**

*Please describe the boundaries, extent, and relative location of the proposed new alignment of this trail segment and how it relates to the Rio Grande Trail Corridor.*

### **Reason for New Alignment**

*Please describe the reasons for realigning this trail segment.*

### **RGT Vision**

*How does this segment support the vision of the Rio Grande Trail?*

### **Ownership**

*Is the segment in public ownership, or are necessary easements or agreements in place? If not, describe*



## **TRAIL SEGMENT REALIGNMENT APPLICATION**

RGT Segments:

*the plan for obtaining and/or managing trail right-of-way.*

### **Public Support**

*Please indicate whether there has been any public outreach and whether there are any groups, organizations, or individuals that have demonstrated support for this trail segment.*

### **Connectivity**

*Describe how this trail segment would provide continuity and/or connectivity within the overall Rio Grande Trail system.*

### **Accessibility**

*What level of access/accessibility is anticipated for the general public and different user groups?*

### **Impact Studies**

*Have environmental impact studies and/or cultural surveys been conducted to understand the potential negative impacts of trail designation? How will impacts be addressed or mitigated? (Required for full designation, optional for interim designation)*

### **Capacity to Maintain**

*How will the trail segment be maintained, and by whom?*

### **Public Safety**

*Indicate how public safety concerns will be addressed.*

#### **1. Additional Documentation**

*Please provide any supporting documentation that would help the Commission evaluate your request as a separate attachment.*

None

# ATTACHMENT E: LETTER OF SUPPORT TEMPLATE

---





## RIO GRANDE TRAIL - LETTER OF SUPPORT

Your Name

Your Title / Organization

Address: City, State, ZIP

Email

Phone

Date

### To Whom It May Concern,

I am writing to express support for the continued development and implementation of the Rio Grande Trail and specifically for the advancement and designation of the following segment: **INSERT SEGMENT NAME OR LOCATION HERE.**

The Rio Grande Trail represents an extraordinary opportunity to enhance recreation, connectivity, and economic development across New Mexico. It serves not only as a recreational corridor for hiking, biking, and equestrian use but also as a vital cultural and ecological asset that connects communities along the Rio Grande. Completing and improving the trail—including **INSERT SEGMENT**—will provide residents with expanded access to safe, accessible outdoor spaces and create new opportunities for tourism, education, and small business growth.

Local and statewide stakeholders have demonstrated interest in trail development, and investing in this infrastructure aligns with broader goals around climate resilience, public health, and community development.

I fully support the development of the **INSERT SEGMENT** and urge all relevant agencies, partners, and funders to prioritize its advancement as part of the Rio Grande Trail.

Sincerely,

**Your Name**

**Your Title**

**Organization**

X

---

John Doe

# **ATTACHMENT F: TRAIL SEGMENT DESIGNATION- CAMINO REAL: SANTA FE RIVER TO CAMINO DE REY ROAD**

---





## **TRAIL SEGMENT DESIGNATION PROCESS & APPLICATION**

RGT Segments: SF-03-B

**Date of Submittal:** 6/13/2025  
**Submittal to:** RGT Commission

**Approval Date** (RGT Commission):

### **Applicant Information**

**Name/Title:** City of Santa Fe  
**Name/Title:** Santa Fe County

**Email:**

Land Owner /  Land Manager (Check which applies)

**If additional applicants:**

**Name/Title:**

**Email:**

Land Owner /  Land Manager (Check which applies)

### **Accessibility**

**Public Access:**

Yes /  No /  With permit

**User Groups:**

Hikers /  Bikers /  Equestrians

**Surfacing:**

Paved /  Unpaved

**Grades/Tread:** Relatively moderate.

**Traffic Flow:** Moderate usage due to its proximity to a major metropolitan area.

**Barriers:** N/A

**Signage:** No signage along the trail.

**Features:** Nearby trailhead and recreation complex which includes bathrooms and parking.



## TRAIL SEGMENT DESIGNATION PROCESS & APPLICATION

RGT Segments: SF-03-B

### Designation Type

Interim/  Full Designation (Check which applies)

*(Note: Interim Designation is for proposed future trail segments; Full Designation is for existing/constructed trail segments.)*

### RGT Segment for Designation (for future identification purposes)

County	Jurisdiction	Segments	Existing Facility	Existing Facility Name	Miles	Application Type
Santa Fe	Santa Fe County	SF-03-B	Paved	El Camino Real Trail	3.36	Undesignated
				<b>Total</b>	<b>3.36</b>	

### Location/Description

*Please describe the boundaries, extent, and relative location of the trail segment and how it relates to the Rio Grande Trail Corridor.*

This section of the trail begins on the north bank of the Santa Fe River, .66 miles from the El Camino Real Trailhead in Santa Fe. This is where the paved portion of the Camino Real trail begins. The segment continues north, paved, for 3.36 miles. This section goes through unincorporated Santa Fe County jurisdiction.

The trail connects to the Municipal Recreation Complex, and the Marty Sanchez Links De Santa Fe. The trail runs over the Arroyo de Los Frijoles and the Arroyo de Las Calabasas. Back at the beginning of the trail segment, at the Santa Fe River, this segment will connect to the in-construction Santa Fe River Trail.

### RGT Vision

*How does this segment support the vision of the Rio Grande Trail?*

This trail segment connects the Santa Fe metro area, the third largest population center in the state, and the state capital to the Caja del Rio Plateau. It is also low impact, as it utilizes existing trails. The majority of this existing trail is also designated as the historic Camino Real heritage trail, connecting people to the



## **TRAIL SEGMENT DESIGNATION PROCESS & APPLICATION**

RGT Segments: SF-03-B

history of this area. The Caja del Rio has been identified as an area of natural significance. Adding the trail to this area could increase support for additional protections.

### **Ownership**

*Is the segment in public ownership, or are necessary easements or agreements in place? If not, describe the plan for obtaining and/or managing trail right-of-way.*

The segment SF-03-B is fully located on county land. Currently, Santa Fe County maintains this trail.

### **Public Support**

*Please indicate whether there has been any public outreach and whether there are any groups, organizations, or individuals that have demonstrated support for this trail segment.*

Multiple meetings have been held with key stakeholders, including land managers and adjacent property owner groups (Las Campanas), regarding this segment. Plus, its existing nature as a paved trail connecting to multiple civic amenities implies a process of engagement behind each of those other projects.

### **Connectivity**

*Describe how this trail segment would provide continuity and/or connectivity within the overall Rio Grande Trail system.*

This section of the trail would reconnect users from the Santa Fe River, connecting to a trails network that goes to the Rio Grande itself. As it stands, there is no extension of the trail proposed north from the Caja del Rio.

### **Impact Studies**

*Have environmental impact studies and/or cultural surveys been conducted to understand the potential negative impacts of trail designation? How will impacts be addressed or mitigated? (Required for full designation, optional for interim designation)*

This existing trail went through a public process when it was constructed and designated as the El Camino Real. In the process of designating this existing trail as the Rio Grande Trail, various land



## **TRAIL SEGMENT DESIGNATION PROCESS & APPLICATION**

RGT Segments: SF-03-B

managers and stakeholders have been engaged, including the adjacent neighborhood Las Campanas, Santa Fe County Open Space, the Forest Service, and the Bureau of Land Management. The Rio Grande Trail, through its master plan process, also included significant public engagement.

### **Capacity to Maintain**

*How will the trail segment be maintained, and by whom?*

Through the designation process, no change to the existing maintenance agreement on the existing trail is anticipated.

The long-term vision for the entire Rio Grande Trail is that a non-profit would be created to support trail maintenance and management. However, in the meantime, maintenance would be completed by the existing entities maintaining the trail.

### **Public Safety**

*Indicate how public safety concerns will be addressed.*

There are not currently any public safety concerns for this section of the trail.

#### **1. Additional Documentation**

*Please provide any supporting documentation that would help the Commission evaluate your request as a separate attachment.*

Camino Real Trail Map, Santa Fe County



# Rio Grande Trail Segment SF-03-B Caja Del Rio Rd. Trail 3.36 Miles

## LEGEND

### Rio Grande Trail

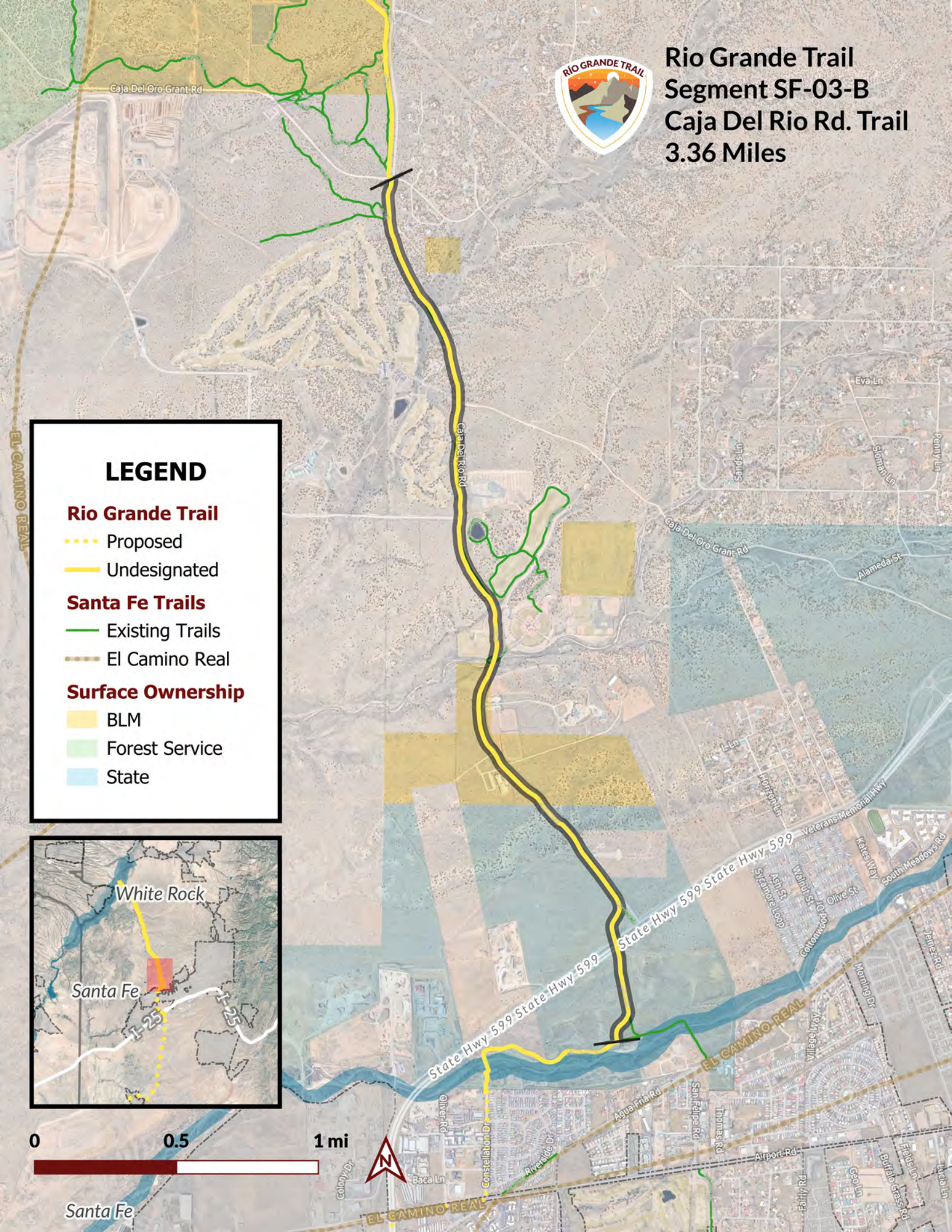
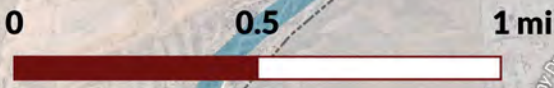
- Proposed
- Undesignated

### Santa Fe Trails

- Existing Trails
- El Camino Real

### Surface Ownership

- BLM
- Forest Service
- State



# ATTACHMENT G: SANTA FE AREA TRAILS MAP

---



# TRAIL MAP



## LEGEND

### MAP INFORMATION

- United States Forest Service Boundary
- Bureau of Land Management Boundary
- City of Santa Fe Boundary
- City of Santa Fe Parks
- Road, Major
- Road, Minor
- Drainageway

### TRAILS + ACCESS

- El Camino Real Trail, paved
- El Camino Real Trail, unpaved
- Connecting Trail
- Trail Segment Distance (miles)
- Trail Junction
- Trailhead
- Parking
- Restroom

Scale: 1 inch = 4,800 feet  
2 miles



This information is for reference only. Santa Fe County assumes no liability for errors associated with the use of this data. Users are solely responsible for confirming data accuracy.

## TRAIL ETIQUETTE



*Help protect our fragile ecosystem,  
please stay on designated trails*

# ATTACHMENT H: TRAIL SEGMENT DESIGNATION- CEBOLLA MESA, TAOS

---





## TRAIL SEGMENT DESIGNATION PROCESS & APPLICATION

RGT Segments: TS-01-D, Cebolla Mesa Trail

**Date of Submittal:** April 11, 2025

**Approval Date** (RGT Commission):

**Submittal to:** Rio Grande Trail Commission

### Applicant Information

**Name/Title:** Amy Simms, District Ranger, Carson National Forest

**Email:** amy.simms@usda.gov

Land owner /  Land Manager (Check which applies)

**If additional applicants:**

**Name/Title:**

Land Owner /  Land Manager (Check which applies)

### Designation Type

Interim/  Full Designation (Check which applies)

*(Note: Interim Designation is for proposed future trail segments; Full Designation is for existing/constructed trail segments.)*

### RGT Segment for Designation (for future identification purposes)

County	Jurisdiction	Segments	Existing Facility	Existing Facility Name	Miles	Application Type
Taos County	Carson National Forest	TS-01-D	Existing Shared Use Path	Cebolla Mesa Trail	1.26	Primary Trail Segment Designation

### Location/Description

*Please describe the boundaries, extent, and relative location of the trail segment and how it relates to*



## **TRAIL SEGMENT DESIGNATION PROCESS & APPLICATION**

RGT Segments: TS-01-D, Cebolla Mesa Trail

### *the Rio Grande Trail Corridor.*

This Rio Grande Trail (RGT) Segment, (TS-01-D) slated for designation through Carson National Forest, is a winding multi use path with switchbacks traveling along the western slope of Cebolla Mesa connecting the Cebolla Mesa campground to Red River. This stretch of trail stops just before crossing the Red River into the Bureau of Land Management's (BLM) Rio Grande Del Norte National Monument, where a bridge connects this segment to more trails north; see **Attachment A**. This trail segment is located fully within the perimeter of Carson National Forest and within the corridor of the Rio Grande National Wild and Scenic River.

The trails connected to the north of this segment, beginning at segment TS-01-C in the Rio Grande Del Norte National Monument, are currently designated as Rio Grande Trail (RGT) Segments all the way to the Colorado border. Therefore, designating this segment (TS-01-D) would further lengthen the most continuous stretch of the RGT.

To the south of this trail segment is a proposed trail segment TS-01-E connecting through Carson National Forest to the Horsethief Mesa trail in the Rio Grande Del Norte National Monument. Ground-truthing is still necessary to identify a precise alignment for the segment TS-01-E.

This segment TS-01-D follows the alignment identified in the 2018 Rio Grande Trail Master Plan, the existing Cebolla Mesa trail, without exception.

### **RGT Vision**

#### *How does this segment support the vision of the Rio Grande Trail?*

The Carson National Forest's Cebolla Mesa segment proposed for designation supports the vision of the Rio Grande Trail. The segment utilizes an existing trail that guides users through magnificent views from atop Cebolla Mesa down to an up-close hiking experience along the Rio Grande and Red River. This portion of the trail brings users to where the Red River and Rio Grande meet, contributing significantly to the environmental connection goals of the RGT.

### **Ownership**



## **TRAIL SEGMENT DESIGNATION PROCESS & APPLICATION**

RGT Segments: TS-01-D, Cebolla Mesa Trail

*Is the segment in public ownership, or are necessary easements or agreements in place? If not, describe the plan for obtaining and/or managing trail right-of-way.*

This segment TS-01-D is fully on existing trails managed by the Carson National Forest.

### **Public Support**

*Please indicate whether there has been any public outreach, and whether there are any groups, organizations, or individuals that have demonstrated support for this trail segment.*

During the master planning process, the project team hosted multiple public meetings and provided other options to participate in the planning process. According to the mission of the Rio Grande Master Plan: *“Participants envision a Rio Grande Trail that fosters geographic connections between the natural environment and communities, provides outdoor recreational opportunities, and highlights the exhilarating natural beauty of the state.* The alignment through Cebolla Mesa will facilitate this mission.

This trail segment is an existing and popular trail. Recreational users consider this an excellent opportunity for viewing the Rio Grande and its adjacent wildlife, as well as opportunities for fly fishing and taking in breathtaking views.

### **Connectivity**

*Describe how this trail segment would provide continuity and/or connectivity within the overall Rio Grande Trail system.*

The Cebolla Mesa trail segment is an important connection for guiding users across the Red River. The segment connects to the La Junta trail on the north side of Red River, travels briefly along the riverbank, and quickly brings users to the top of Cebolla Mesa. From the top of Cebolla Mesa, this segment then connects users to the proposed TS-01-E trail running further south on the East Rim, before connecting back to the West Rim by the John Dunn Bridge.

### **Accessibility**

*What level of access/accessibility is anticipated for the general public and different user groups?*

This Cebolla Mesa Trail segment (TS-01-D) is located along an existing multi-use trail that is primarily for



## **TRAIL SEGMENT DESIGNATION PROCESS & APPLICATION**

RGT Segments: TS-01-D, Cebolla Mesa Trail

hikers. Due to some obstacles in the path, steep slopes, and tight switchbacks, the segment is not ADA accessible.

### **Impact Studies**

*Have environmental impact studies and/or cultural surveys been conducted to understand the potential negative impacts of trail designation? How will impacts be addressed or mitigated? (Required for full designation, optional for interim designation)*

As this Cebolla Mesa Trail segment (TS-01-D) is an existing trail managed by the Carson National Forest, all relevant environmental and cultural surveys have been conducted and managed by the Carson National Forest's office.

### **Capacity to Maintain**

*How will trail segment be maintained, and by whom?*

Trail maintenance is provided by the existing maintenance work of Carson National Forest.

### **Public Safety**

*Indicate how public safety concerns will be addressed.*

As this segment of trail (TS-01-D) is existing and under the jurisdiction of the National Forest Service (NFS), public safety is addressed through the agency's rules, orders, and regulations, as well as law enforcement- all integral parts of the overall management work conducted by the NFS. This portion of the Carson National Forest is overseen by the Questa Ranger District.

#### **1. Additional Documentation**

*Please provide any supporting documentation that would help the Commission evaluate your request as a separate attachment.*

- **Attachment A: Overview map.**

**Rio Grande Trail  
Alignment:  
Cebolla Mesa**



Red River  
TS-01-C

Rio Grande

TS-01-D

Cebolla Mesa  
Campground

TS-01-E

**CONTEXT MAP**



**LEGEND**

- Rio Grande Trail Alignment
  - Designated
  - Undesignated
  - Proposed
- Surface Ownership
  - BLM
  - FS



# ATTACHMENT I: CARSON NATIONAL FOREST LETTER OF SUPPORT

---





## RIO GRANDE TRAIL – LETTER OF SUPPORT

Amy Simms  
District Ranger, Forest Service, Carson National Forest  
Address: City, State, ZIP  
amy.simms@usda.gov  
575-586-0520  
6/3/2025

*The below email was sent Tue, 6/3/2025 at 2:21 PM Mountain:*

Good Afternoon,

Please accept this email as the Carson National Forest support to administratively designate the existing Cebolla Mesa trail as part of the Rio Grande Trail. The attached application that our recently retired recreation program manager filled out is accurate as well as the map.

Please visit with the Mayor of Questa prior to the RGT commission meeting to ensure that he does not have any questions or concerns and assuming that is the case let me know if this email will work for support or if you need a formal letter.

Thank you.



**Amy Simms**  
**District Ranger**

**Forest Service**

**Carson National Forest**

**p: 575-586-0520**

**c: 575-770-4003**

**[amy.simms@usda.gov](mailto:amy.simms@usda.gov)**

**184 State Highway 38**

**Questa, NM 87556**

# **ATTACHMENT J: TRAIL SEGMENT DESIGNATION - A005, TRUTH OR CONSEQUENCES**

---





## TRAIL SEGMENT DESIGNATION PROCESS & APPLICATION

RGT Segment: SR-05-B

**Date of Submittal:** April 11, 2025

**Approval Date** (RGT Commission):

**Submittal to:** Rio Grande Trail Commission

### Applicant Information

**Name/Title:** Gary Whitehead, City Manager

**Name/Title:**

**Email:**

Land owner /  Land Manager (Check which applies)

**If additional applicants:**

**Name/Title:**

**Email:**

Land Owner /  Land Manager (Check which applies)

### Designation Type

Interim/  Full Designation (Check which applies)

*(Note: Interim Designation is for proposed future trail segments; Full Designation is for existing/constructed trail segments.)*

### RGT Segment for Designation (for future identification purposes)

County	Jurisdiction	Segments	Existing Facility	Existing Facility Name	Miles	Application Type
Sierra	Sierra County	SR-05-B	Unpaved multi-use roadway.	Turtleback Ave	3.79	Primary Trail Segment Designation



## **TRAIL SEGMENT DESIGNATION PROCESS & APPLICATION**

RGT Segment: SR-05-B

### **Location/Description**

*Please describe the boundaries, extent, and relative location of the trail segment and how it relates to the Rio Grande Trail Corridor.*

The Rio Grande Trail alignment slated for designation through Sierra County includes this segment SR-05-B, which is 3.79 miles of Turtleback Avenue (Sierra County Road A005) opposite the main streets of Truth or Consequences, on the eastern side of the river; see Attachment A. This Turtleback Ave segment is already an asset to the outdoor recreation community in the area. Turtleback Ave is the access road for several informal but locally popular hiking trails that venture into the Caballo Mountains.

This segment slated for designation follows the alignment identified in the RGT Master Plan (2018) and the Turtleback Trails Network Concept Plan (2023).

### **RGT Vision**

*How does this segment support the vision of the Rio Grande Trail?*

This Sierra County RGT segment slated for designation supports the vision of the Rio Grande Trail. The alignment uses existing infrastructure adjacent to the river. This segment, as its own hiking experience and as access to other opportunities, contributes to environmental awareness, healthy lifestyles, and spiritual growth.

### **Ownership**

*Is the segment in public ownership, or are necessary easements or agreements in place? If not, describe the plan for obtaining and/or managing trail right-of-way.*

Segment SR-05-B is on an existing right of way managed by Sierra County.

### **Public Support**

*Please indicate whether there has been any public outreach, and whether there are any groups, organizations, or individuals that have demonstrated support for this trail segment.*

During the RGT master planning process, the project team hosted several public meetings and other



## **TRAIL SEGMENT DESIGNATION PROCESS & APPLICATION**

RGT Segment: SR-05-B

options to participate in the planning process. Two open houses in Southern New Mexico attracted 165 participants during the RGT Planning Process. According to the Rio Grande Master Plan, “Participants envision a Rio Grande Trail that fosters geographic connections between the natural environment and communities, provides outdoor recreational opportunities, and highlights the exhilarating natural beauty of the state.” The alignment through Sierra County will facilitate this vision.

Public support for this alignment was further expressed during the development of the Turtleback Trails Network Concept Plan. While COVID-19 limited opportunities to interact with the public, the Turtleback Trails Steering Committee engaged in non-contact interactions with the public, collecting written input from over 350 citizens.

### **Connectivity**

*Describe how this trail segment would provide continuity and/or connectivity within the overall Rio Grande Trail system.*

The Sierra County trail alignment will connect Elephant Butte Lake State Park and the Truth or Consequences / Williamsburg area. It connects proposed trails on the southern end of Elephant Butte Lake State Park to the Turtleback Trail Network closer to the City. Further development of the Turtleback Trail Network Plan will build new bridges that add options for trail users from the West side of the river to access these trail segments on the East.

### **Accessibility**

*What level of access/accessibility is anticipated for the general public and different user groups?*

Given the unpaved nature of this road, the loose materials do not provide sufficient surface integrity for many user groups.

### **Impact Studies**

*Have environmental impact studies and/or cultural surveys been conducted to understand the potential negative impacts of trail designation? How will impacts be addressed or mitigated? (Required for full designation, optional for interim designation)*

For segment SR-05-B, the trail will travel along existing road facilities, so this requirement is not applicable. For future trail facilities, all required impact statements will be completed as required by the various land owners/managers during the design and development phase.



## **TRAIL SEGMENT DESIGNATION PROCESS & APPLICATION**

RGT Segment: SR-05-B

### **Capacity to Maintain**

*How will trail segment be maintained, and by whom?*

The Sierra County Road Department is responsible for maintaining 500 miles of designated roads within the county. This segment, which runs along Turtleback Ave (A005), has annually scheduled maintenance, according to the Sierra County Government Road Maintenance Schedule.

### **Public Safety**

*Indicate how public safety concerns will be addressed.*

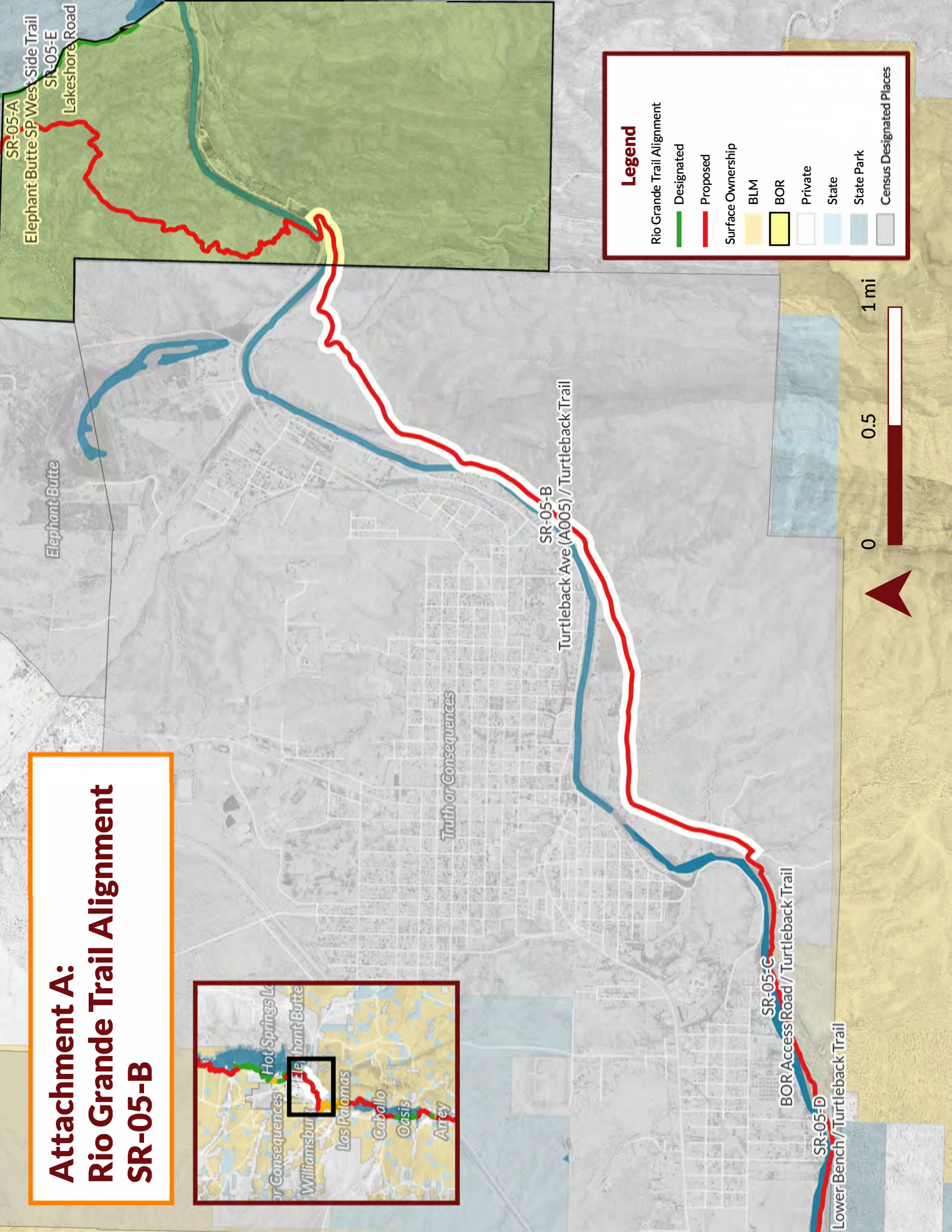
The City of Truth or Consequences is policing Turtleback Avenue within the city jurisdictions. For the segment of Turtleback Avenue east of City limits, within Elephant Butte Lake State Park, New Mexico State Parks rangers, New Mexico sheriffs, and New Mexico State Police officers have full authority to enforce laws and regulations.

#### **1. Additional Documentation**

*Please provide any supporting documentation that would help the Commission evaluate your request as a separate attachment.*

None

# Attachment A: Rio Grande Trail Alignment SR-05-B



**Legend**

- Rio Grande Trail Alignment
  - Designated (Green line)
  - Proposed (Red line)
- Surface Ownership
  - BLM (Yellow)
  - BOR (Light Blue)
  - Private (White)
  - State (Light Blue)
  - State Park (Dark Blue)
  - Census Designated Places (Grey)



SR-05-A  
Elephant Butte SP West Side Trail  
SR-05-E  
Lakeshore Road

Elephant Butte

Truth or Consequences

SR-05-B  
Turtleback Ave (A005) / Turtleback Trail

SR-05-C  
BOR Access Road / Turtleback Trail

SR-05-D  
Lower Bench / Turtleback Trail

# ATTACHMENT K: CITY OF TRUTH OR CONSEQUENCES SUPPORT

---





# CITY OF TRUTH OR CONSEQUENCES

## AGENDA REQUEST FORM

MEETING DATE: April 9, 2025

Agenda Item #: H.5

**SUBJECT:** Discussion/Action: Seeking support from the City Commission for the County to designate a segment of County Road A05 as part of the Rio Grande Trail system.

**DEPARTMENT:** Swimming Pool

**DATE SUBMITTED:** April 4, 2025

**SUBMITTED BY:** O.J. Hechler

**WHO WILL PRESENT THE ITEM:** O.J. Hechler, Community Service Director

**Summary/Background:** T or C will be hosting the Rio Grande Trails Commission meeting on April 11<sup>th</sup>, 2025, at the T or C Civic Center from 9am – 12pm. On this agenda is the designation of a segment of Turtleback Ave(A005) as part of the Rio Grande Trail. This has to formally go to the County Commission for final approval at the April 22<sup>nd</sup> County Commission meeting.

**Recommendation:**

**Support designation of the trail segment**

**Attachments:**

- RGT Commission Meeting Flyer
- RGT Commission Meeting Agenda

**Fiscal Impact (Finance):** N/A

\$0.00

**Legal Review (City Attorney):** N/A

Click here to enter text

**Approved For Submittal By:**  Department Director

**Reviewed by:**  City Clerk  Finance  Legal  Other: Click here to enter text.

**Final Approval:**  City Manager

### CITY CLERK'S USE ONLY - COMMISSION ACTION TAKEN

Resolution No. - Ordinance No. -

Continued To: - Referred To: -

Approved  Denied  Other: -

File Name: CC Agendas 4-9-25

# COMMISSION MEETING AGENDA – APRIL 11

## WEBEX VIDEO CONFERENCING OPTION:

Link to join the meeting on-line: <https://nmemnrd.webex.com/nmemnrd/j.php?MTID=m2188b4c99e4494641293df8a64734f1c>

Meeting number (access code): 2492 818 4356

Meeting password: FMpiuMMf775 (36748663 when dialing from a video system)

## CALL IN OPTION:

If you would like to join the meeting by telephone, please call:

1-844-992-4726 Toll Free. When prompted, dial event number: 2492 818 4356

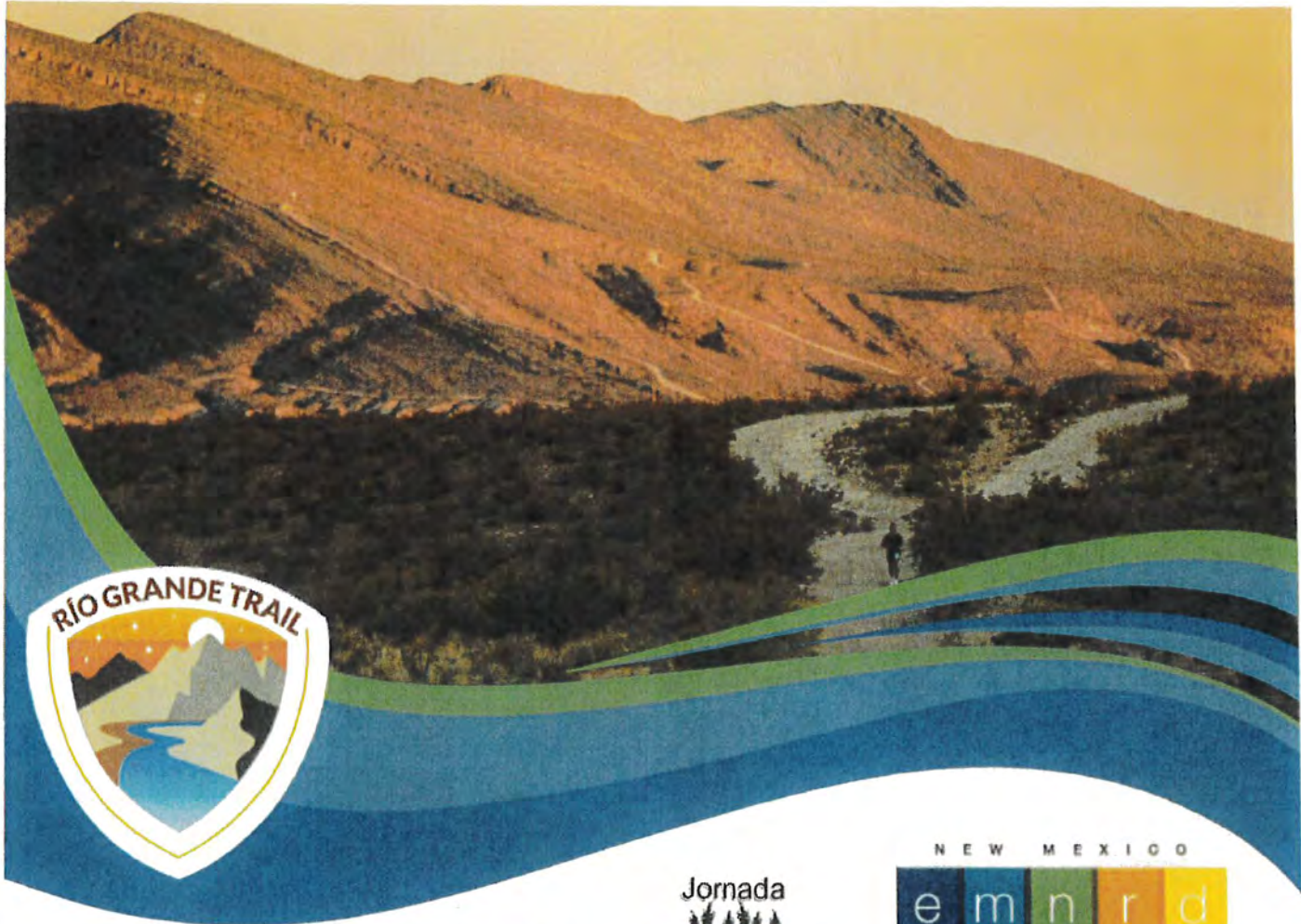
## GENERAL INSTRUCTIONS:

During the meeting, please mute yourself unless you would like to speak. This will minimize background noise.

## AGENDA

1. Call to Order
  2. Roll Call
  3. Approval of Agenda
  4. Approval of Open Meetings Act Resolution
  5. Approval of Minutes
  6. Public Comment
  7. New Business
    - a. Commission member introductions
    - b. **Keynote Speaker:** Teresa Martinez - *Executive Director, Continental Divide Trail Coalition*
      - i. **Topic:** *The Role of Non-Profits in Interstate Trail Management: A Perspective from the Continental Divide Trail*
    - c. Updates From the Chair
      - i. *W-9's*
      - ii. *Tribal Engagement*
      - iii. *2026 Legislative Proposal Development*
        1. *Amending the Rio Grande Trail Commission Act to release liability for special districts for public usage of trail hosted on their land.*
        2. *Recreational Use Statute*
    - d. Presentations
      - i. *Carl Colonius, Program Manager, ORD*
        1. *Roles and Responsibilities of the Commission, ORD, Pland and other partners*
  2. *Regional Outdoor Recreation Council*
    - ii. *Pland Collaborative (Contractor, ORD)*
      1. *Introduction of Rio Grande Trail (RGT)*
      2. *Trail Designation Process*
  - e. *Developing Sub-Committees / Work Groups*
8. **Action Items**
  - i. *Approval of Designation of the Following Trail Segments:*
    1. *City of Albuquerque & Bernalillo County: Paseo del Bosque Trail, Riverside Trail, Chris Chavez Trail, Valle de Oro Trail. Trail Segments: BN-02 to 07, some of 08 Total Mileage: 22.4 miles*
    2. *Taos County: Cebolla Mesa Trail Segment: TS-01-D Total Mileage: 1.26*
    3. *Turtleback Ave (A005), Truth or Consequences, Sierra County Trail Segment: SR-05-B Total Mileage: 3.79*
  - a. *Develop the Rio Grande Trail commission office*
9. **Discussion**
  - a. *Gateway community designation*
10. **Announcement of Next Meeting**
11. **Public Comment**
12. **Adjournment**





# RIO GRANDE TRAIL COMMISSION MEETING

**PUBLIC WELCOME!**

April 11, 2025  
9:00am – 12:00pm  
  
T or C Civic Center  
400 W. 4th St.



- What is the RGT?
- The RGT in Sierra County
- Next Steps
- Q&A

couple of roads to where that water has to overcome a higher elevation from the side streets before it can actually drain out. So, maybe just lowering those profiles on those side streets so we can get that water out.

Andrew Gallegos, WH Pacific: Unfortunately, the river controls the elevation. If it was lower, we would have more options for bigger storm drainpipes and other things that we could do, but since the water level is so high, that really constricts some of those options.

Commissioner Fahl: Even if we had all of the money in the world, trying to plan for a 100-year storm wouldn't even be possible because of our water table.

**Commissioner Fahl moved to accept the T or C Downtown Master Drainage Plan as presented. Commissioner Hoepfner seconded the motion. Roll call was taken by the Clerk-Treasurer. Motion carried unanimously.**

**4. Discussion/Action: Review, Approve and/or Allocate Funds to the Sierra County Arts Council for Marketing T or C & Sierra County as an Arts Destination.**

City Clerk Torres: This is an application that was submitted to our Lodgers Tax Board from the Sierra County Arts Council. It is for their Southwest Contemporary New Mexico Field guide. They requested \$2,890 and the board approved the entire amount. So, we are requesting approval for this application.

**Commissioner Mitchell made a motion to approve the Sierra County Arts Council application for the Marketing T or C & Sierra County as an Arts Destination in the amount of \$2890. Commissioner Hoepfner seconded the motion. Roll call was taken by the Clerk-Treasurer. Motion carried unanimously.**

**5. Discussion/Action: Seeking support from the City Commission to designate a segment of County Rd. A05 as part of the Rio Grande Trail System.**

OJ Hechler, Community Services Director: A few weeks ago, the Turtleback Trails Network met with a couple of members of the Rio Grande Trails Commission. Carl Colonias who is our outdoor recreation planner for the State of New Mexico who also oversees our trails plus grant. As well as a couple of members of Planned Collaborative who is a planning firm out of Albuquerque. In discussions in that meeting, we discussed something that would be tangible, and something that collates with the Rio Grande Trail master plan. What we came up with was to designate a segment of County Road A05 which is on the east side of the river as a segment of the Rio Grande Trail. I do have an attachment for you to review. With the Rio Grande Trail, we already have segments that

are at Elephant Butte that connect on the other side, and the idea is to combine that along County Road A05. There is approximately 3.79 miles of road. The road will not be altered. It will not be changed. It may however have some signage here in the future saying that it is part of the Rio Grande Trails. The Rio Grande Trail Commission's master plan is to run a trail all the way along the Rio Grande, all the way through New Mexico. The application has been sent to Ms. Vaughn, the County Manager. She has the application. This cannot be made official until the County Commission meeting on the 22<sup>nd</sup>, but we thought it would be important to get it in front of the City Commission to express our support. This ties in with our Turtleback Trails Network concept plan. So, the idea when we host this meeting Friday from 9-12 at the Civic Center, it is to gather as much excitement as we can. We got the right stakeholders there. Mr. Colonias and stuff like that. We need to really put out the red carpet and give him a good show. We need to show him what our ambitions are and what our goals are and see what happens here in the future. Amber at the County is willing to fill out the application, but it still has to go to the County Commission for approval.

Commissioner Fahl: As we talked about, the Turtleback Trail is to meet some of the needs of our community, but it will also foster more economic development through tourism. We believe the County will approve it. That's just another way to do that. They will put this on their website, and they will continue to promote us as a tourist destination, so it is a win, win, all the way around.

**Commissioner Fahl moved to approve the support from the City Commission to designate a segment of County Rd. A05 as part of the Rio Grande Trail System. Commissioner Mitchell seconded the motion. Roll call was taken by the Clerk-Treasurer. Motion carried unanimously.**

#### **6. Discussion/Action: Comprehensive Plan Steering Committee/Stakeholder Selection Revision.**

Assistant City Manager Alvarez: As you know from the previous meeting, we did a full selection for our Steering Committee. It is my understanding that we have a change in that selection.

Commissioner Fahl: After the last meeting when you guys so graciously selected my son Dick Landford. He is a various businessman, and he gives me suggestions all the time, so I thought he'd be great to serve on the Steering Committee because he has a lot of vision. After that meeting, there was a lot of flack on social media because it appeared like there was some sort of nepotism going on. I don't want any bad juju to be associated with this, and the perception sometimes becomes reality. So, between the two I would rather him serve on the committee so I think you should let me step down and let Destiny serve. She really wanted to be on the committee so I think we should just do that, so the Steering Committee doesn't have any bad reflections from the community, and it has some really worth well people serving on it.

# ATTACHMENT L: SIERRA COUNTY RESOLUTION 2025-35

---





## **RESOLUTION NO. 2025-35**

### **A RESOLUTION AUTHORIZING THE COUNTY MANAGER TO PURSUE DESIGNATION OF A SEGMENT OF COUNTY ROAD A05 AS PART OF THE RIO GRANDE TRAIL AND TURTLEBACK TRAILS NETWORK**

**WHEREAS**, the Board of County Commissioners of Sierra County met in a duly noticed, regular meeting on April 22, 2025, at the Sierra County Administration Building, 1712 North Date Street, Truth or Consequences, New Mexico; and

**WHEREAS**, pursuant to NMSA 1978, Section 4-38-1, the powers of a county as a body politic and corporate shall be exercised by a Board of County Commissioners; and

**WHEREAS**, NMSA 1978, Section 4-37-1 authorizes counties to exercise all powers necessary and proper to provide for the safety, preserve the health, promote the prosperity, and improve the comfort and convenience of their inhabitants; and

**WHEREAS**, Sierra County is home to numerous outdoor recreation assets, including the Turtleback Trails Network and the Turtleback Mountain Trail, which enhance the County's scenic and recreational opportunities and support local eco-tourism and quality of life; and

**WHEREAS**, the Rio Grande Trail Commission, the Turtleback Trails Network, and the State of New Mexico's Outdoor Recreation Division have expressed support for designating a segment of County Road A05, located on the east side of the Rio Grande, as an official segment of the Rio Grande Trail, to be integrated into the Turtleback Trails Network; and

**WHEREAS**, this designation will not alter the physical condition, alignment, or public access of County Road A05, but will formally recognize its recreational value and may involve the future installation of interpretive or wayfinding signage; and


**WHEREAS**, the designation aligns with Sierra County's goals to promote outdoor recreation, public health, sustainable tourism, and environmental stewardship; and


**NOW, THEREFORE, BE IT RESOLVED** by the Board of County Commissioners of Sierra County that the County supports the designation of a segment of County Road A05 as a part of the Rio Grande Trail and the Turtleback Trails Network;


**NOW, THEREFOR, BE IT FURTHER RESOLVED** that the County Manager, Amber Vaughn, is hereby authorized to coordinate with the Rio Grande Trail Commission, the Planning Collaborative, and other relevant stakeholders, and to take all necessary administrative steps, including providing documentation or support for any application materials, to effectuate this designation.

**APPROVED, ADOPTED, AND PASSED on this 22nd day of April, 2025.**


**BOARD OF COUNTY COMMISSIONERS OF SIERRA COUNTY**

  
\_\_\_\_\_  
Travis Day, Chairman

  
\_\_\_\_\_  
James Paxon, Vice-Chairman

  
\_\_\_\_\_  
Hank Hopkins, Commissioner

Attest:

  
\_\_\_\_\_  
Amy Whitehead, County Clerk

# ATTACHMENT M: SIERRA COUNTY LETTER OF SUPPORT

---





## RIO GRANDE TRAIL – LETTER OF SUPPORT

Amber Vaughn  
Sierra County Manager  
1712 N. Date, Suite D, Truth or Consequences, NM 87901  
avaughn@sierraco.org  
(575) 740-7105  
6/6/2025

*The below email was sent on Tuesday, April 29, 2025, 9:43 AM Mountain:*

Good morning,

The Commission has approved the resolution. The traffic volume on the roadway is approximately 400 vehicles per day, and there are no existing easements recorded. I'll get the document that was sent over filled out this week and will send it back to you once it's completed.

Please let me know if you need anything else in the meantime.

*The below email was sent on Friday, June 6, 2025 10:47 AM Mountain:*

Good morning,

The traffic count is conducted monthly by Urban SDK, and we use their software to review the data. Urban SDK estimates traffic volumes using anonymized data from GPS-enabled mobile devices, such as smartphones and fleet tracking systems. This allows them to calculate metrics like Annual Average Daily Traffic (AADT) and Vehicle Miles Traveled (VMT) across various road segments.

**Amber Vaughn**  
Sierra County Manager  
1712 N. Date, Suite D  
Truth or Consequences, NM 87901  
(575) 740-7105 cell  
(575) 894-6215  
[avaughn@sierraco.org](mailto:avaughn@sierraco.org)

# ATTACHMENT N: TRAIL SEGMENT DESIGNATION - SOCORRO BOSQUE RIVER TRAIL

---





## TRAIL SEGMENT DESIGNATION PROCESS & APPLICATION

GRT Segments: SC-07

**Date of Submittal:**  
**Submittal to:**

**Approval Date** (RGT Commission):

### **Applicant Information**

**Name/Title:** Rob Selina, Director, Socorro Trails

**Email:** rselina@nrao.edu

Land owner /  Land Manager (Check which applies)

**If additional applicants:**

**Name/Title:** Michael Hawkes, County Manager, Socorro County

**Email:**

Land Owner /  Land Manager (Check which applies)

### **Designation Type**

Interim/  Full Designation (Check which applies)

*(Note: Interim Designation is for proposed future trail segments; Full Designation is for existing/constructed trail segments.)*

### **RGT Segment for Designation (for future identification purposes)**

County	Jurisdiction	Segments	Existing Facility	Existing Facility Name	Miles	Application Type
Socorro County	City of Socorro, MRGCD	SC-07	Existing, on-levee	Rio Grande River Walk	3.0	Primary Trail Segment Designation
				<b>Total</b>	<b>3.0</b>	

### **Location/Description**

*Please describe the boundaries, extent, and relative location of the trail segment and how it relates to*



## **TRAIL SEGMENT DESIGNATION PROCESS & APPLICATION**

GRT Segments: SC-07

### *the Rio Grande Trail Corridor.*

The Rio Grande Trail alignment slated for designation through Socorro County includes portions of the SC-07 Rio Grande Trail (RGT) segment; see **Attachment A**. RGT is located within the City of Socorro boundaries, segments outside the city limits are not included in this designation application.

The segment selected for designation follows an existing trail, the “Rio Grande River Trail.” The trail meanders through the Bosque along the river and connects five parks, including Confluence Park, Bosque Park, Sandbar Park, Island Park, and Otero Park.

In portions, this alignment differs slightly from the alignment identified in the RGT Master Plan (2018). It, however, meets the intent of the master plan that aims “to the extent feasible, select existing trails for the route of the Rio Grande trail.” The alignment of the “Rio Grande River Walk” connects on the northern end to the RGT alignment and merges with the RGT alignment at Otero Park in the southern portion; see **Attachment B** for details on the existing and revised alignment.

### **RGT Vision**

#### *How does this segment support the vision of the Rio Grande Trail?*

RGT alignment slated for designation supports the vision of the Rio Grande Trail. The alignment utilizes 3 miles of existing trail located adjacent to the river. These 3 miles are already a cherished and frequently utilized community asset where the community explores and learns about the river’s unique functions. It contributes to cultural and environmental awareness, healthy lifestyles, and spiritual growth by providing access to the river and bosque while managing access and use.

### **Ownership**

#### *Is the segment in public ownership, or are necessary easements or agreements in place? If not, describe the plan for obtaining and/or managing trail right-of-way.*

The portion of the Segment SC-07, identified for designation, are all located on the existing River Walk trail, and located within the City of Socorro. MRGCD has jurisdiction over levees and other drainage and flood control infrastructure, but has a standing MOU with the City to permit recreational uses on the trail. The trail is managed by the City of Socorro and maintained by the Save Our Bosque Task Force.

### **Public Support**



## **TRAIL SEGMENT DESIGNATION PROCESS & APPLICATION**

GRT Segments: SC-07

*Please indicate whether there has been any public outreach, and whether there are any groups, organizations, or individuals that have demonstrated support for this trail segment.*

During the planning process, the project team hosted in-person public meetings and other opportunities for community input. According to the Rio Grande Master Plan, “Participants envision a Rio Grande Trail that fosters geographic connections between the natural environment and communities, provides outdoor recreational opportunities and highlights the exhilarating natural beauty of the state.” The alignment through the City of Socorro will facilitate this vision. During additional community meetings organized by the Save Our Bosque Task Force, stakeholders and support for the trail was expressed, including the opportunity to connect 13 river parks located along the route, five of which can be connected through this project.

### **Connectivity**

*Describe how this trail segment would provide continuity and/or connectivity within the overall Rio Grande Trail system.*

The City of Socorro trail alignment will provide essential connections to existing trails within and beyond city boundaries. It parallels the El Camino Real de Tierra Adentro NHT (not developed) and connects to other trails and parks along the Bosque. The 3-mile stretch constitutes an essential piece in the larger trail alignment. When more of the alignment is designated and improved, it will also connect to the Grand Enchantment trail and important community assets, like the Escondida lake and campground and Socorro Nature Area. In addition, the Rio Grande Trail will also connect the small communities that are dotted along the river in Socorro County. These include San Acacia, Polvadera, Lemitar, Escondida, Florida, Luis Lopez, Laborcita, and San Antonio.

### **Accessibility**

*What level of access/accessibility is anticipated for the general public and different user groups?*

Most of the proposed RGT alignment is located along an existing trail designed. The trail is gravel and sometimes inaccessible.

### **Impact Studies**

*Have environmental impact studies and/or cultural surveys been conducted to understand the potential negative impacts of trail designation? How will impacts be addressed or mitigated? (Required for full*



## **TRAIL SEGMENT DESIGNATION PROCESS & APPLICATION**

GRT Segments: SC-07

*designation, optional for interim designation)*

Segment SC-07 will travel along existing trail facilities. **Therefore, this requirement is not applicable. For future trail facilities, all required impact statements will be completed as required by the various landowners/land managers during the design and development phase.**

### **Capacity to Maintain**

*How will trail segment be maintained, and by whom?*

Trail maintenance is provided by the City of Socorro and the Save our Bosque Task Force.

### **Public Safety**

*Indicate how public safety concerns will be addressed.*

The City of Socorro is policing the Bosque trail. Socorro County Sheriff's Office polices other areas outside of the city.

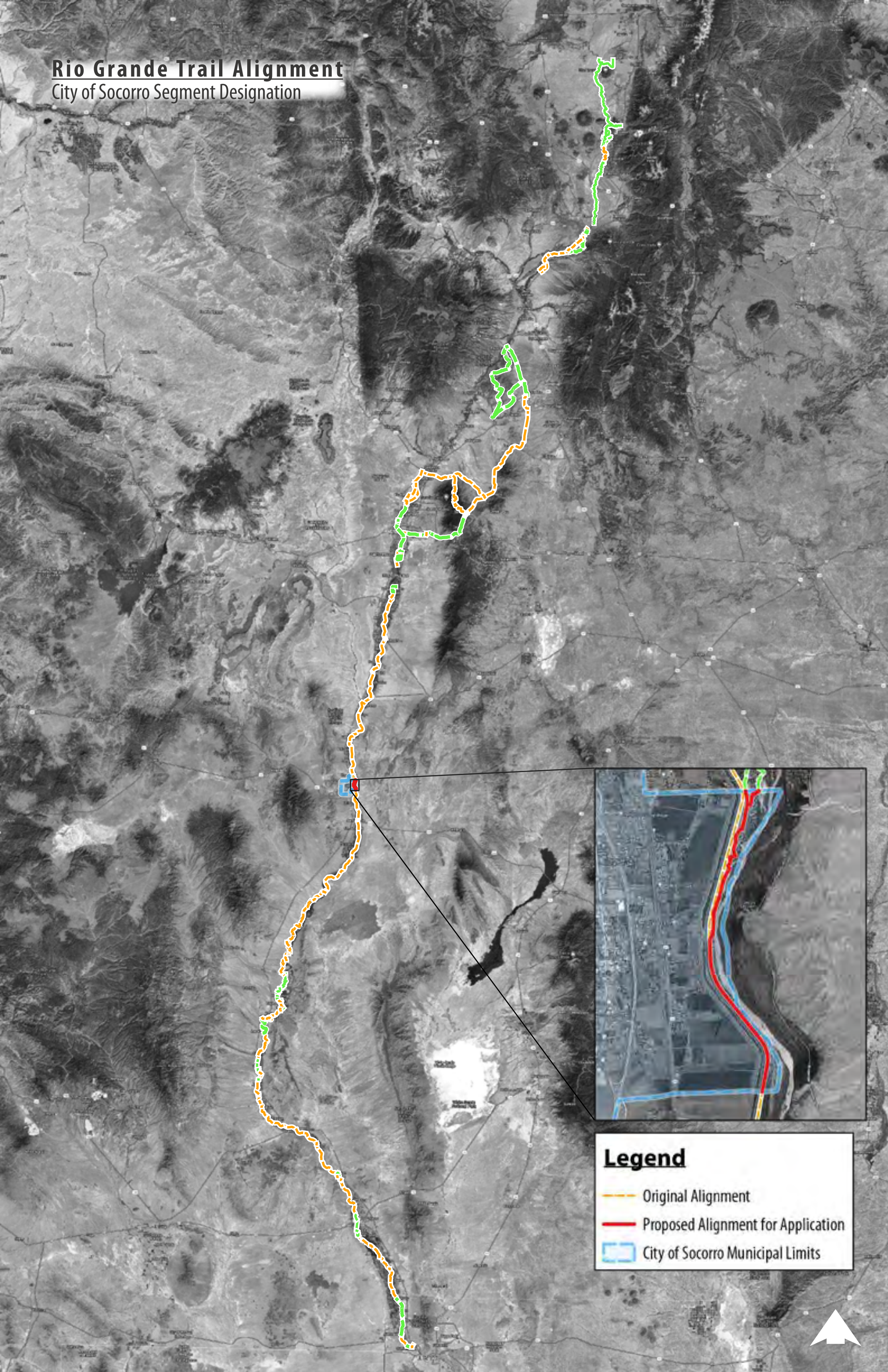
#### **1. Additional Documentation**

*Please provide any supporting documentation that would help the Commission evaluate your request as a separate attachment.*

None

# Rio Grande Trail Alignment

## City of Socorro Segment Designation



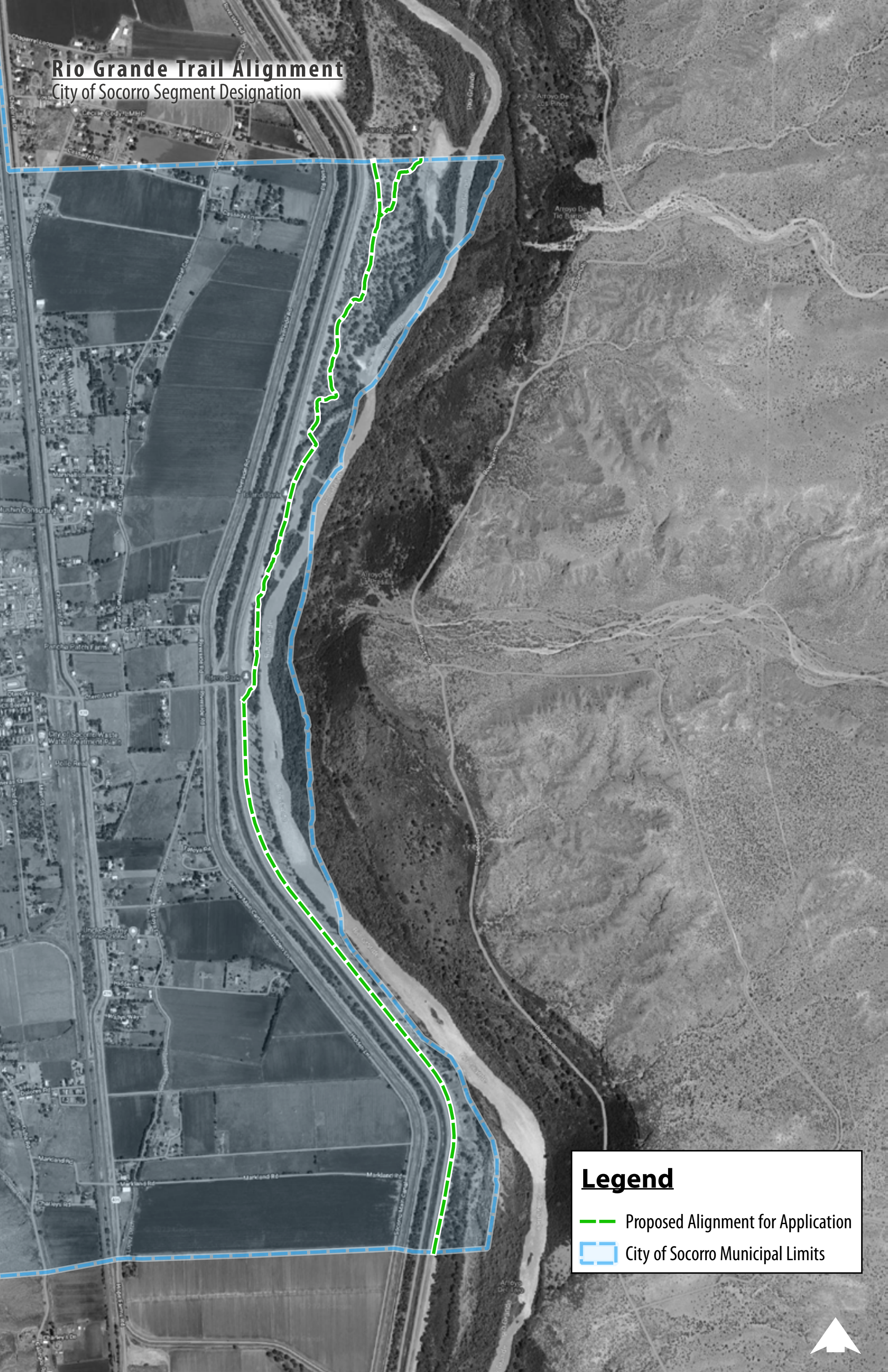
**Legend**

- Original Alignment
- Proposed Alignment for Application
- City of Socorro Municipal Limits



# Rio Grande Trail Alignment

## City of Socorro Segment Designation



### Legend

-  Proposed Alignment for Application
-  City of Socorro Municipal Limits



# ATTACHMENT O: CITY OF SOCORRO LETTER OF SUPPORT

---





# CITY OF SOCORRO

**RAVI BHASKER  
MAYOR**

**111 SCHOOL OF MINES ROAD  
P.O. DRAWER K  
SOCORRO, NEW MEXICO 87801  
PHONE: (575) 835-0240  
FAX: (575) 838-4027  
WWW.SOCORRONM.GOV**

**DONALD MONETTE  
CITY TREASURER/  
ADMINISTRATOR**

**LEOPOLDO (POLO) PINEDA  
CITY CLERK**

**RUBY LOPEZ  
FINANCE DIRECTOR**

June 5, 2025

Rio Grande Trail Commission  
New Mexico Energy, Minerals, and Natural Resources Department  
1220 S. St. Francis Drive  
Santa Fe, NM 87505

Dear Rio Grande Trail Commission,

On behalf of the City of Socorro, I am writing to express our support for the designation of the Socorro Valley Bosque Trail as an official segment of the Rio Grande Trail. The City, through a Licensing Agreement with the Middle Rio Grande Conservancy District, is responsible for the operation and maintenance of this trail and the interconnected Riverine Parks within City limits. We recognize the importance of enhancing public access to outdoor recreation and appreciate the Rio Grande Trail's role in promoting connectivity along the river corridor.

We believe that inclusion of the Socorro Valley Bosque Trail in the Rio Grande Trail network aligns with our community's commitment to preserving and responsibly managing the bosque environment along with developing outdoor recreation and tourism. We look forward to continued collaboration with the Rio Grande Trail Commission and other partners to support a sustainable and enriching trail experience that benefits both trail users and the communities along the trail alignment.

Sincerely,

Ravi Bhasker  
Mayor  
City of Socorro

# ATTACHMENT P: MRGCD LICENSE AGREEMENT

---



M.R.G.C.D. CONTRACT NO. 188-2024  
M.R.G.C.D. MAP SEE TABLE  
TRACT NO. CITY OF SOCORRO, SOCORRO RIVERINE PARKS/TRAIL  
SEC. 31, T. 2S, R. 1E, SEC. 6, T. 3S, R. 1E, SEC. 7, T. 3S, R. 1E

RIO GRANDE BOSQUE  
STATIONS SEE TABLE  
ROW OWNERSHIP FEE SIMPLE ESTATE  
ROW WIDTH VARIES

**MIDDLE RIO GRANDE PROJECT  
LICENSE AGREEMENT**

**LICENSE WITH CITY OF SOCORRO TO INSTALL AND MAINTAIN FIVE (5) RIVERINE  
PARKS AND A (1) TRAIL WITHIN THE RIO GRANDE BOSQUE RIGHT-OF-WAY**

OTERO PARK	RM 99.25	MAP 162
ISLAND PARK	RM 99.5	MAP 162
SANDBAR PARK	RM 100.5	MAP 160
BOSQUE PARK	RM 101.5	MAP159
CONFLUENCE PARK	RM 102.5	MAP159
SOCORRO VALLEY BOSQUE TRAIL	RM 99.25 TO RM 102.5	MAPS 159,160,162

This License Agreement is made and entered into this \_\_\_\_\_ day of \_\_\_\_\_, 20\_\_\_\_, by and between the Middle Rio Grande Conservancy District, (the District), and CITY OF SOCORRO, (the Licensee).

WHEREAS, the right-of-way is held for the Middle Rio Grande Project's (Project) RIO GRANDE BOSQUE (the property), in fee simple estate and the District operates and maintains the property as an integral part of the Districts works and property; and

WHEREAS, the Licensee has requested permission from the District, to the extent of the Districts property interest, to utilize the property in a manner more particularly specified herein for a period of fifty (50) years beginning on the date of execution of this agreement; and

WHEREAS, the District is willing to agree, to use of the property and encroachment upon the property pursuant to the conditions more particularly specified herein; and

NOW THEREFORE, the District agrees to use of, and encroachment upon the property by the Licensee only to the extent and for the purpose set forth below:

## SPECIAL STIPULATIONS

1. Licensee shall MAINTAIN AND ENHANCE THE FIVE (5) RIVERINE PARKS AND INTERCONNECTING TRAIL WITHIN THE RIO GRANDE BOSQUE RIGHT-OF-WAY, hereinafter referred to as "the installation", across the property which will SERVE THE CITY OF SOCORRO, MRGCD Map 159,160,162, Station RM 99.25 TO RM 102.5. The District agrees to the installation set forth in this paragraph only pursuant to the guidelines shown on attachment(s) EXHIBITS attached hereto, and any and all other attached drawings and/or specifications which by this reference are made a part of this License Agreement.

2. Any trash receptacles installed in the licensed area shall be heavy duty steel and wildlife resistant with latching lids. Licensee will monitor and maintain receptacles, so trash does not exceed receptacle capacity.

3. Licensee shall maintain a vegetation clear zone of minimum ten (10) feet in all directions around park grills. Vegetation management other than weed trimming, removal of fallen or hazardous dead branches, trimming vegetation to maintain safe trail access and maintaining a clear zone around grills requires the prior approval of the MRGCD. Trail vegetation maintenance shall be done September 1st through April 15<sup>th</sup>, outside the migratory bird nesting season.

4. Trails within the levee system and bosque must be maintained as natural surface trails. Proposals to modify the current trail width must be submitted to the MRGCD for approval.

5. Licensee will lock gates on MRGCD facilities after entering and notify the MRGCD's Socorro Division office of missing locks or damage to gates.

6. All work that is not routine park and trail maintenance and management, such as construction, installation or removal of park infrastructure, road improvements or vegetation management to be done within the property must be approved by the District prior to commencing work, and shall be closely coordinated with the District's Engineering Department and appropriate field offices, **Phone: (505) 247-0234**.

7. Licensee reserves the right to surrender the License upon thirty (30) days advance written notice to the District in the event licensee determines, in its own independent judgement, that continuation of the License would cause an undue burden on the finances of the Licensee, whereupon the License shall be deemed terminated and of no further force or effect. Termination shall not release the Licensee from any liability of obligation, whether of indemnity or otherwise, that may have attached, accrued, or was accruing at the time of such termination. Notice of surrender shall be sufficient if mailed to the District at : **P.O. Box 581, Albuquerque, NM 87103-0581** .

## GENERAL STIPULATIONS

1. As consideration for the license herein granted prior to the execution of this agreement, Licensee has paid a non-refundable sum of **Two-hundred dollars (\$200.00)** based on a fee amount for issuing and administering the License by the District and Reclamation, for minimal engineering, outgrant appraisal, and environmental reviews, and for inspection of construction. When total charges are not known in advance due to extraordinary inspections, environmental considerations, or other requirements yet to be determined, an estimated amount will be paid in advance after billing, subject to later adjustment, as required, or billing of total fees and charges will be made at the completion of the job.

2. This License shall be null and void if the installation and/or construction of the work set forth in paragraph 1 of the Special Stipulations and the attached drawings and specifications is not complete within **one (1) year** from the date of execution of this Agreement.

3. If the work is to be performed by a **private contractor**, the Licensee is responsible for ensuring that the private contractor *obtains* a Special Use License from the District prior to construction. Special Use Licenses can be obtained by applying online *licensing.mrgcd.com*

4. The Licensee shall, at its own expense, locate, install, construct, maintain and/or repair any structures, accessories, or any installation permitted by this License and shall, at its own expense, bear all costs incurred by reason of the exercise of the privilege conferred by this License. Maintenance responsibilities include, but are not limited to, cleaning of debris, silt, weeds and other obstructions inside road culvert crossings and around the inlet and outlet ends of road culvert crossings or under bridge crossings.

5. The privilege granted by this License shall not be exercised, nor shall any structure, accessory, or installation be constructed or maintained so as to obstruct in any manner the flow of water into or through the Districts works, or to interfere in any manner whatsoever with the construction, operation, maintenance and functions of the District. Should the installation permitted under this License become damaged or require removal, relocation, or protection as a result of District operation and maintenance of the property, the Licensee shall, at its own expense, repair, remove, relocate, or protect the installation.

6. Each party hereto shall be responsible, within the limits of any applicable tort claims act or other applicable governmental immunity laws, for its own acts or omissions in the event of any alleged negligence related to claims of bodily injury or property damage arising from the existence, construction, maintenance, repair, condition or use of any structures, accessories or encroachments authorized by this License or by the exercise of the privilege conferred by this License. Nothing herein shall be construed to waive or limit any legal defense, immunity or other legal protection conferred upon any party hereto by virtue of common law or any applicable tort claims act or other applicable governmental immunity laws, whether arising from federal or state law.

7. This License is not intended by any of the provisions of any part of the License to create in the public, or any member thereof, a third-party beneficiary or to authorize anyone not a party to the License to maintain a suit for wrongful death, bodily and/or personal injury to person, damage to property and/or any other claim(s) whatsoever pursuant to the provisions of the License.

8. By entering into this License Agreement, each party shall be responsible for liability arising from personal injury or damage to person and property occasioned by its own agents or employees in the performance of this License Agreement, subject in all cases to the immunities and limitations of the New Mexico Tort Claims Act (NMSA 1978, Section 41-4-1, et seq.) and any amendments thereto. This paragraph is intended only to define the liabilities as governed by common law or the New Mexico Tort Claims Act. The District and its "public employees" as defined in the New Mexico Tort Claims Act, do not waive sovereign immunity, do not waive any defense and/or do not waive any limitations of liability pursuant to law. No provision in this License modifies and/or waives any provision of the New Mexico Tort Claims Act.

9. Where the property that is the subject of this License is held by the District other than as a fee simple estate, the Licensee shall be solely responsible for ascertaining whether the installation will encroach upon property belonging to entities or persons other than the District and for obtaining any additional permission or licenses that may be required from property owners other than the District. The Licensee shall obtain the requisite permission prior to the use of or encroachment upon the property.

10. By this License, the District does not warrant its fee simple estate interest. This License serves solely to define the conditions pursuant to which the District will permit encroachment upon its property as evidenced by existing records and as defined by this License.

11. This License shall be revocable by the District, upon thirty (30) days written notice to the Licensee if the District determines that the continuation of this License is detrimental to the interest of the District. Upon such revocation, all structures, accessories, and installations shall be removed by the Licensee without delay at the expense of the Licensee. Any rights that the Licensee may have under this License shall terminate immediately upon receipt of written notice of revocation. Revocation shall not release the Licensee from any liability or obligation, whether of indemnity or otherwise, that may have attached, accrued, or was accruing at the time of such revocation. Notice of revocation shall be sufficient if mailed to Licensee at: CITY OF SOCORRO, 111 SCHOOL OF MINES RD., SOCORRO NM, 87801. PHONE (575) 835-0240

12. If, at any time, the Licensee shall, in the judgment of the District, fail to properly perform any of the terms, obligations or covenants under this agreement, the District may, at their option, perform or have performed such work as it deems necessary for the safe operation of the works of the District, or to protect the property of the District or any third party, or the public. In such event, Licensee agrees to pay any and all costs incurred by the District in the performance of such work, including costs related to the supervision of the work. Payment shall be made by the Licensee within thirty (30) days after a bill is rendered.

13. Each party to this Agreement shall bear its own costs and attorney's fees in the event of any court proceeding brought by either party to enforce this Agreement.

14. The Licensee shall comply with all applicable laws, ordinances, rules, and regulations enacted or promulgated by any federal, state, or local government body having jurisdiction over the real property for which the License is granted.

15. The provisions of this agreement shall inure to the benefit of and be binding upon the heirs, executors, administrators, personal representatives, successors, and assigns of the parties hereto; provided, however, that no such heir, executor, administrator, personal representative, successor or assign of the Licensee shall have the right to use, alter, or modify the installation / encroachment in a manner which will increase the burden of the installation / encroachment on the property. This License shall not be assignable by the Licensee without prior written approval from the District.

16. All work to be done within the property must be approved by the District prior to commencing work, and shall be closely coordinated with the District's Engineering Department and appropriate field offices, Phone: (505) 247-0234.

17. Licensee shall not perform work on the property or upon structures belonging to, or operated by the District between March 1 and October 31 inclusive. However, work may be permitted by the District if the Licensee demonstrates to the District, prior to commencing work, that the work will not interfere with the District operations and maintenance of the property.

18. The Licensee, its employees, agents, contractors or subcontractors shall not store equipment, materials or debris on the property which may interfere with operations and maintenance of the property and shall not service vehicles or equipment on the property.

19. Seeding of disturbed areas within the right-of-way is required per District seeding specifications and must meet the satisfaction of the District staff.

20. Each party hereto may inspect related records upon reasonable notice, and further agree to comply with any applicable laws, regulations, or ordinances, including, but not limited to the City of Albuquerque's Accountability in Government Ordinance (§ 2-10-01 seq.) and the Inspector General Ordinance (§ 2-17-1 et seq.), relating to audits of the expenditures of public funds.

IN WITNESS WHEREOF, the parties hereto have executed this agreement the day and year first above written.

**APPROVED:**

**MIDDLE RIO GRANDE CONSERVANCY DISTRICT**

Jason M. Casuga DATE: 10-23-24  
Jason M. Casuga P.E., Chief Executive Officer/Chief Engineer

IN WITNESS WHEREOF, the Licensee, intending to be legally bound has caused their proper and duly authorized officers to accept this License Agreement as of the date below.

**ACCEPTED:**

**LICENSEE -CITY OF SOCORRO**

Ravi Bhasker, Mayor  
PRINT NAME AND TITLE OF SIGNATORY

[Signature] DATE 10/22/2024  
SIGNATURE DATE

**ACKNOWLEDGMENT OF THE LICENSEE**

State of NM )  
 )ss.  
County of Socorro )

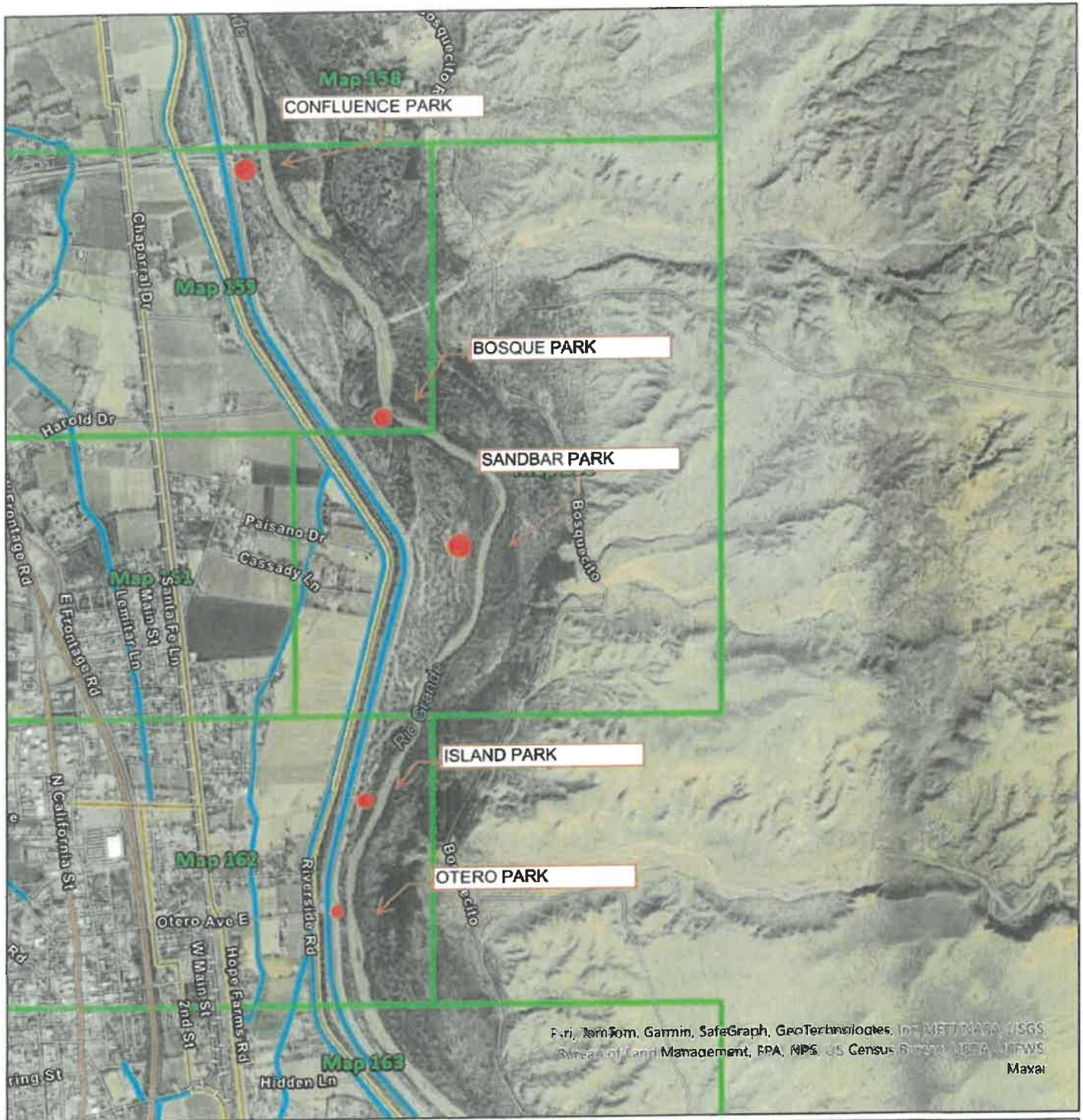
On the 22<sup>nd</sup> day of October, 2024, the above noted Licensee personally appeared before me, known to me to be the individual described in and who executed the within and foregoing instrument, and acknowledged that he / she signed the within and foregoing instrument as his / her free and voluntary act and did for the uses and purposes therein mentioned.

IN WITNESS WHEREOF, I have hereunto set my hand and affixed my official seal the day and year first above written.

Lena A. Chavez

Notary Public in and for the  
State of NM  
Residing at Socorro  
My commission expires: 02/05/2025

STATE OF NEW MEXICO  
NOTARY PUBLIC  
LENA A. CHAVEZ  
COMMISSION NUMBER 1098353  
EXPIRATION DATE 02-05-2025



MIDDLE  
RIO GRANDE



CONSERVANCY  
DISTRICT

Date: 9/12/2024

## Exhibit Map



1 inch = 3,009 feet

This map is for reference purposes only.

MRGCD Cadastre Lines

- Lot Lines
- - - Combined Lots
- MRGCD ROW
- Public ROW

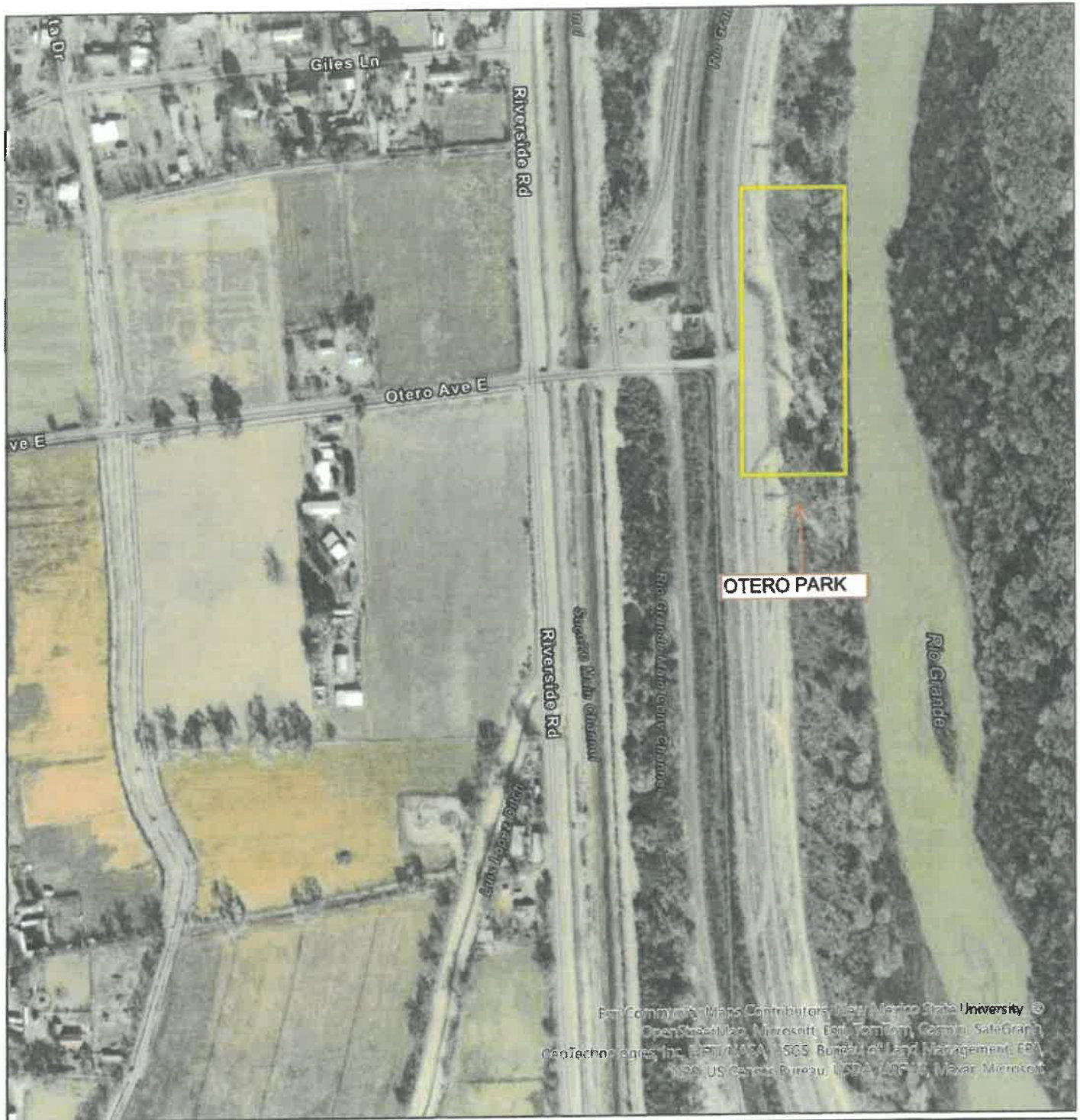
Facility Network

- Drain
- Other

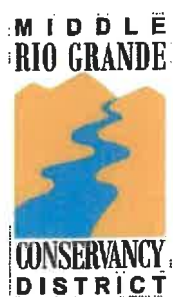
MRGCD Map Index

LICENSE NO. 188-2024

Page 7 of 13





Basel Communit's Maps Contributors, New Mexico State University ©  
 OpenStreetMap, Microsoft, Esri, TomTom, Garmin, SatGrid, ©  
 GeoTechnologies Inc, HERE, MAPS, © SGS, Bureau of Land Management, EPA  
 © 2019 US Census Bureau, USDA, © 2019, Maxar, Microsoft

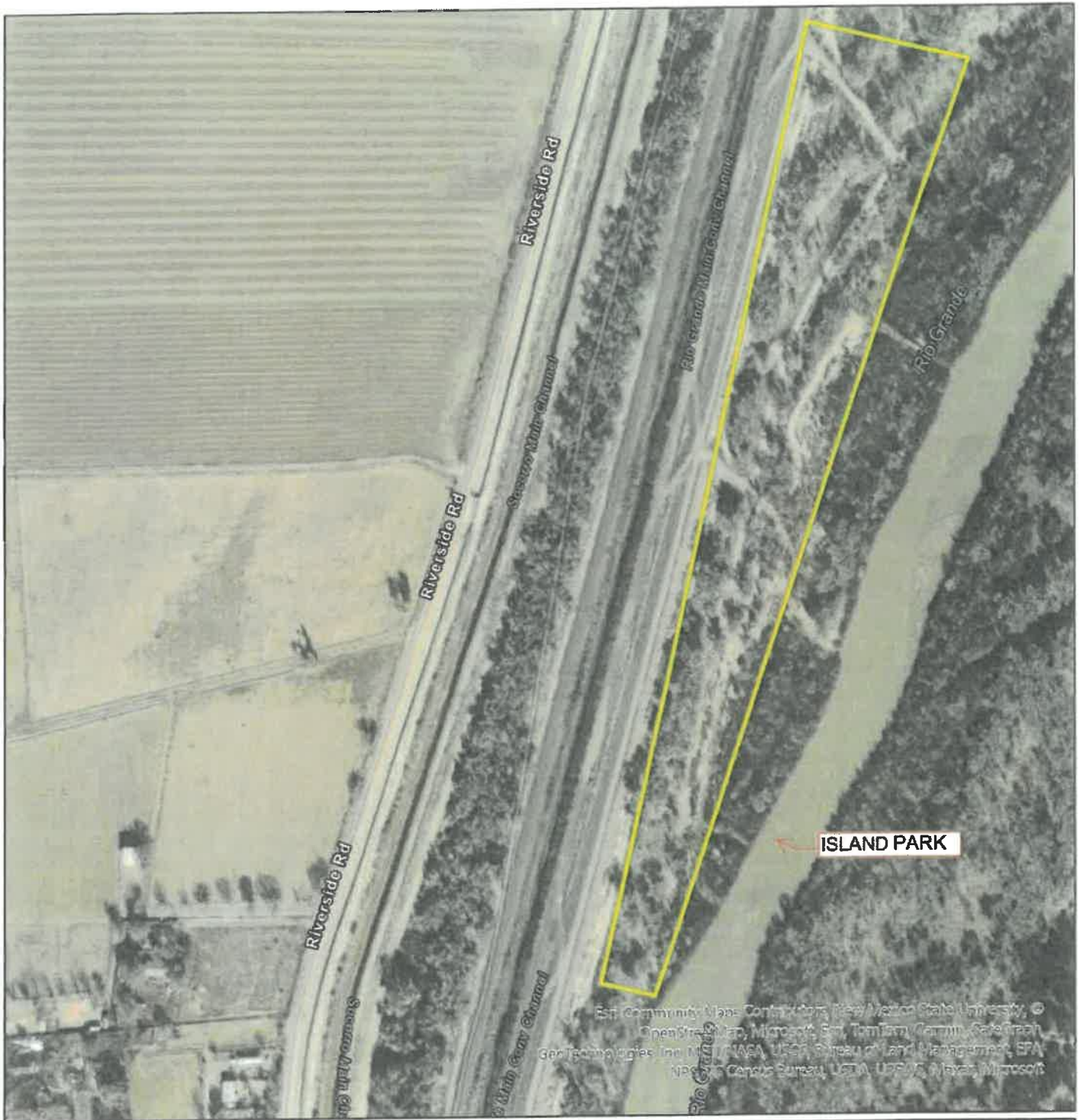


Date: 9/19/2024

### Exhibit Map



 1 inch = 376 feet  
 This map is for reference purposes only.








<b>MRGCD Cadastre Lines</b> — Lot Lines - - - Combined Lots — MRGCD ROW — Public ROW	<b>Facility Network</b> — Drain — Other	 MRGCD Map Index
--	---	---



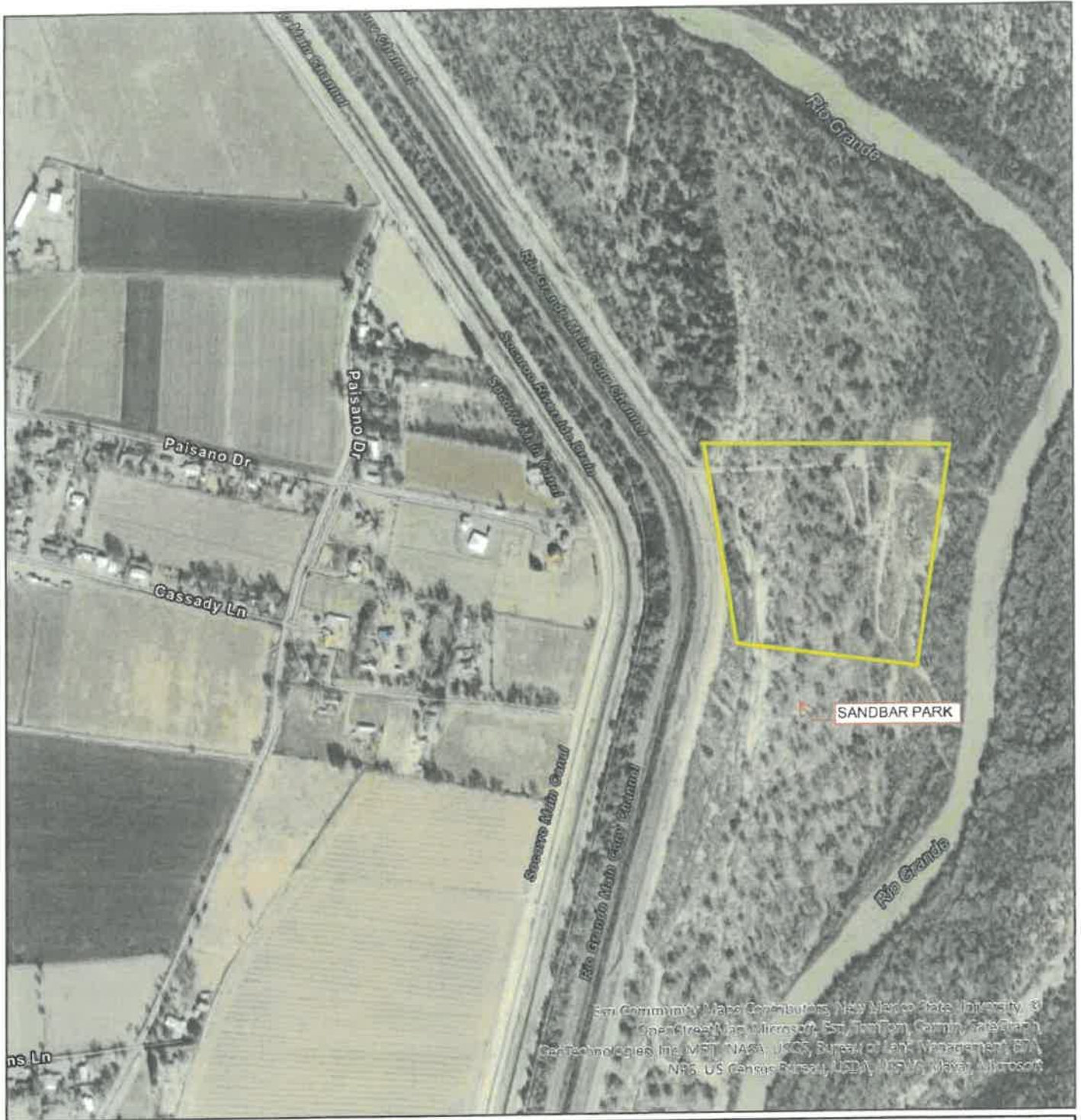
Date: 9/19/2024

## Exhibit Map


 1 inch = 376 feet  
 This map is for reference purposes only.

<b>MRGCD Cadastre Lines</b>  Lot Lines  Combined Lots  MRGCD ROW  Public ROW	<b>Facility Network</b>  Drain  Other	 MRGCD Map Index
--	---	---

LICENSE NO: 188-2024  
Page 9 of 13











San Community Map Contributors: New Mexico State University, OpenStreetMap, Microsoft, Esri, TomTom, Garmin, Intergraph, GeoTechnologies Inc., MPT, NASA, USGS, Survey of Land Management, EIT, NPS, US Census Bureau, USDA, USFWS, Maxar, Microsoft



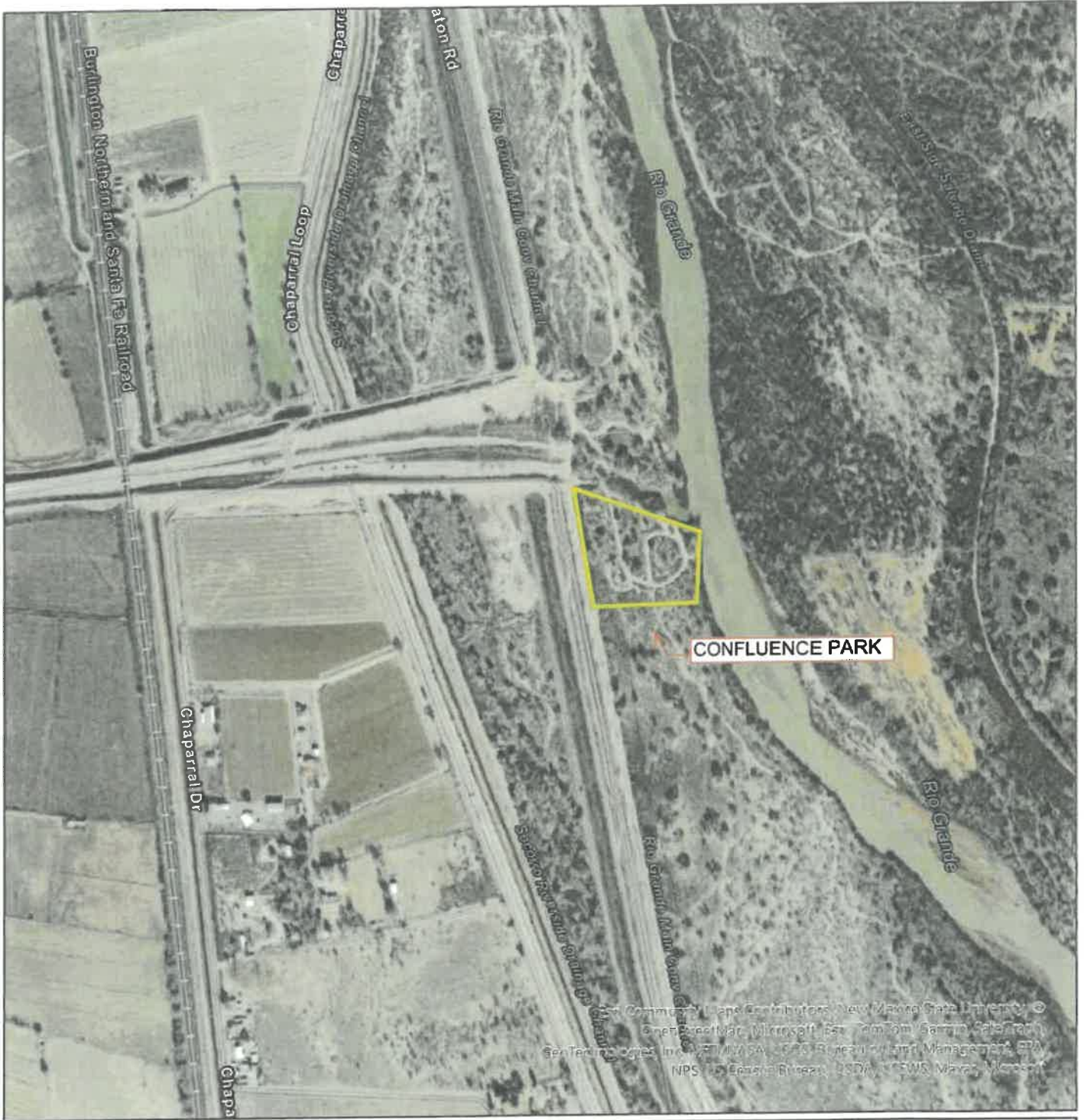
Date: 9/19/2024

## Exhibit Map


 | 1 inch = 752 feet  
 This map is for reference purposes only.

<b>MRGCD Cadastre Lines</b>	<b>Facility Network</b>	 MRGCD Map Index
 Lot Lines	 Drain	
 Combined Lots	 Other	
 MRGCD ROW		
 Public ROW		





MIDDLE  
RIO GRANDE



Date: 9/19/2024

## Exhibit Map



1 inch = 752 feet

This map is for reference purposes only.

**MRGCD Cadastre Lines**

- Lot Lines
- - - Combined Lots
- MRGCD ROW
- Public ROW

**Facility Network**

- Drain
- Other

MRGCD Map Index

LICENSE NO. 188-2024

Page 12 of 13

# Middle Rio Grande Conservancy District



## RECEIPTS

Year/Bill Category	2025 32433	Payment	Effective Date	09/30/2024
Receipt	32435	Receipts	Entry Date/Time	09/30/2024 11:13
Amount	200.00		Clerk	Estelita
Batch	8182		Department	110 ACCOUNTING
Transaction	34058		Source	Payment Entry
Customer			Gl. Eff. Date	09/30/2024
Property Code			Posted Date	
Web Transaction?	N		yr/Per/3rd	2025 03
External Batch			Batch Status:	In Proof/Initial
Reference			Reversal Status:	Not Reversed
Receipt Comment	LICENSE #188-2024		Reason	Voided? N
			Receipt Num	CITY OF SOKOMBO

Seq.	Inv. Method	Check/Card Applied Amount	Deposit	Pay By	Pay Date
1	CREDIT CARD	200.00	093024112		09/30/2024

Line	Charge	Description	Principal Paid	Interest Paid
1	06	LICENSE APPLICATION	200.00	0.00

No Installment detail records exist.

# ATTACHMENT Q: MRGCD LETTER OF SUPPORT

---





A CENTURY *of* SERVICE

---

1931 SECOND ST. SW • ALBUQUERQUE, NM 87102 • 505.247.0234

Rio Grande Trail Commission  
New Mexico Energy, Minerals, and Natural Resources Department  
1220 S. St. Francis Drive  
Santa Fe, NM 87505

6/9/2025

**To Whom It May Concern,**

I am writing to express support for the continued development and implementation of the Rio Grande Trail and specifically for the advancement and designation of the following segment: **Socorro Valley Bosque Trail SC-07**.

The Rio Grande Trail represents an opportunity to create responsible recreation, regional connectivity, and economic development across New Mexico. It serves not only as a recreational corridor for hiking, biking, and equestrian use but also as an emerging cultural asset that connects communities along the Rio Grande. Including the **Socorro Valley Bosque Trail SC-07** in the RGT network will provide residents with expanded access to safe, accessible outdoor spaces and create new opportunities for tourism, education, and small business growth in the San Acacia reach of the middle Rio Grande Valley.

Local and statewide stakeholders have demonstrated interest in trail development, and investing in this infrastructure aligns with broader goals around public health, and community development.

We will continue to evaluate each section of proposed RGT within the middle valley on a case-by-case basis. In this instance, we support the development of the **Socorro Valley Bosque Trail SC-07**, consistent with the terms of our existing license agreement with the City of Socorro to “**Install and Maintain Five (5) Riverine Parks and A (1) Trail Within the Rio Grande Bosque Right-of-Way**” owned by MRGCD, and urge all relevant agencies, partners, and funders to prioritize its advancement as part of the Rio Grande Trail.

Sincerely,

**Jason M. Casuga, P.E.**  
**CEO / Chief Engineer**  
**Middle Rio Grande Conservancy District**