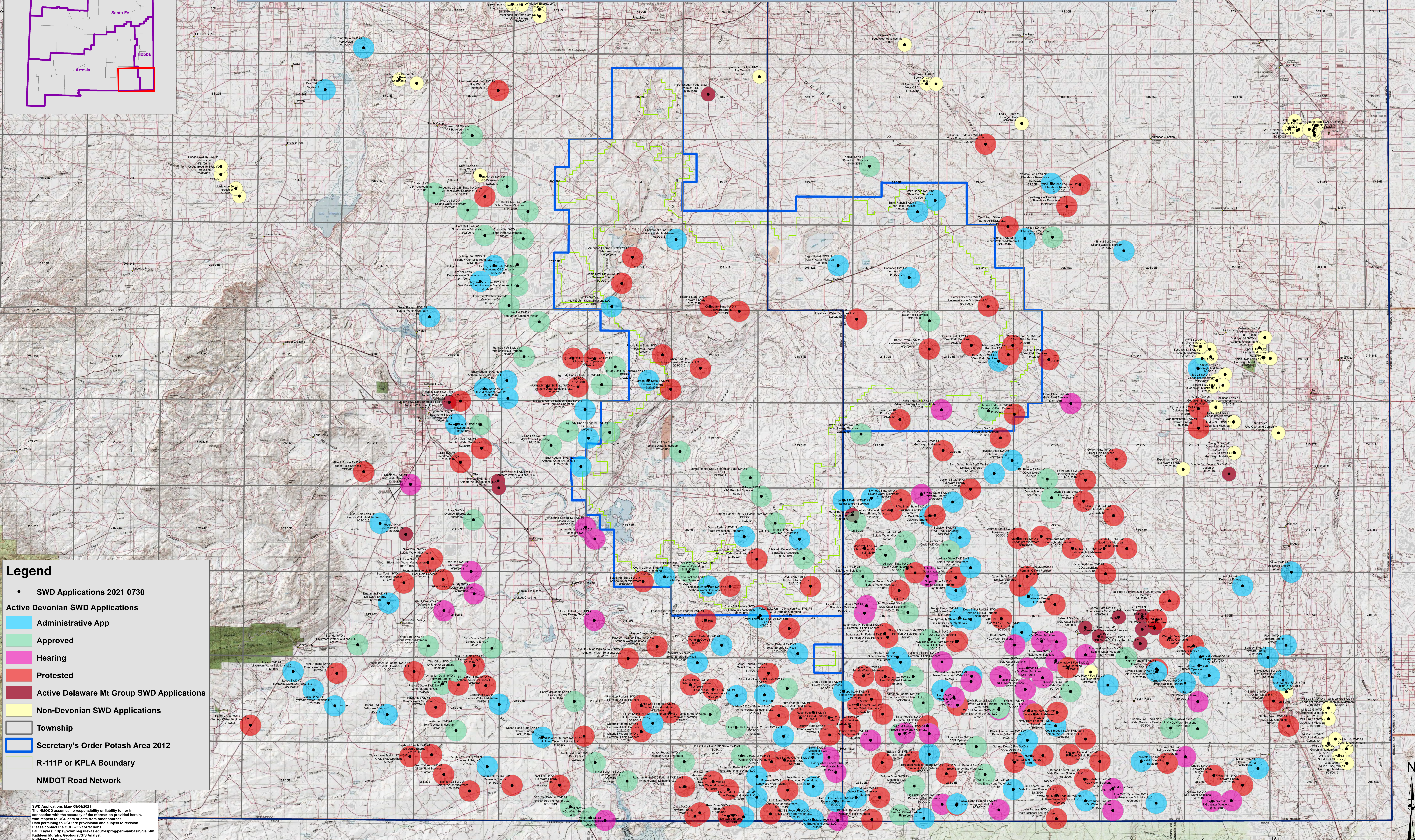
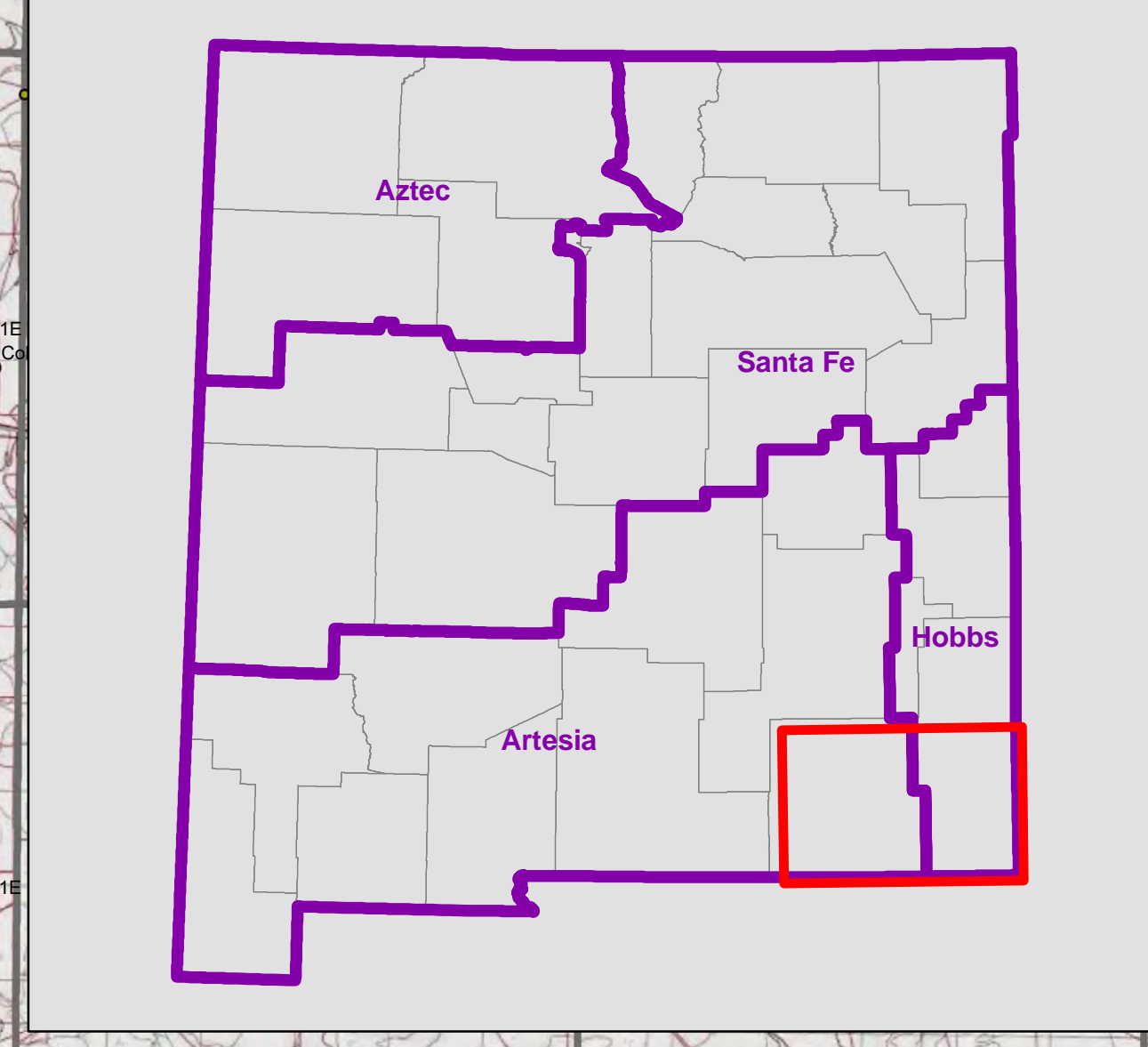


# NM OCD SWD Active Applications in the Delaware Basin 08/04/2021



**Legend**

- SWD Applications 2021 0730
- Active Devonian SWD Applications
  - Administrative App
  - Approved
  - Hearing
  - Protested
- Active Delaware Mt Group SWD Applications
- Non-Devonian SWD Applications
- Township
- Secretary's Order Potash Area 2012
- R-111P or KPLA Boundary
- NMDOT Road Network

SWD Applications Map- 08/04/2021  
 The NMOCD assumes no responsibility or liability for, or in connection with the accuracy of the information provided herein, with respect to OCD data or data from other sources.  
 Data pertaining to OCD are provisional and subject to revision. Please contact the OCD with corrections.  
 Fault Layers: <https://www.beg.utexas.edu/es/prog/permanbasin/gis.htm>  
 Kathleen Murphy, Geologist/GIS Analyst  
 Kathleen A. Murphy@state.nm.us  
 08/14/2021

