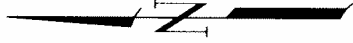


ST. ANTHONY MINE



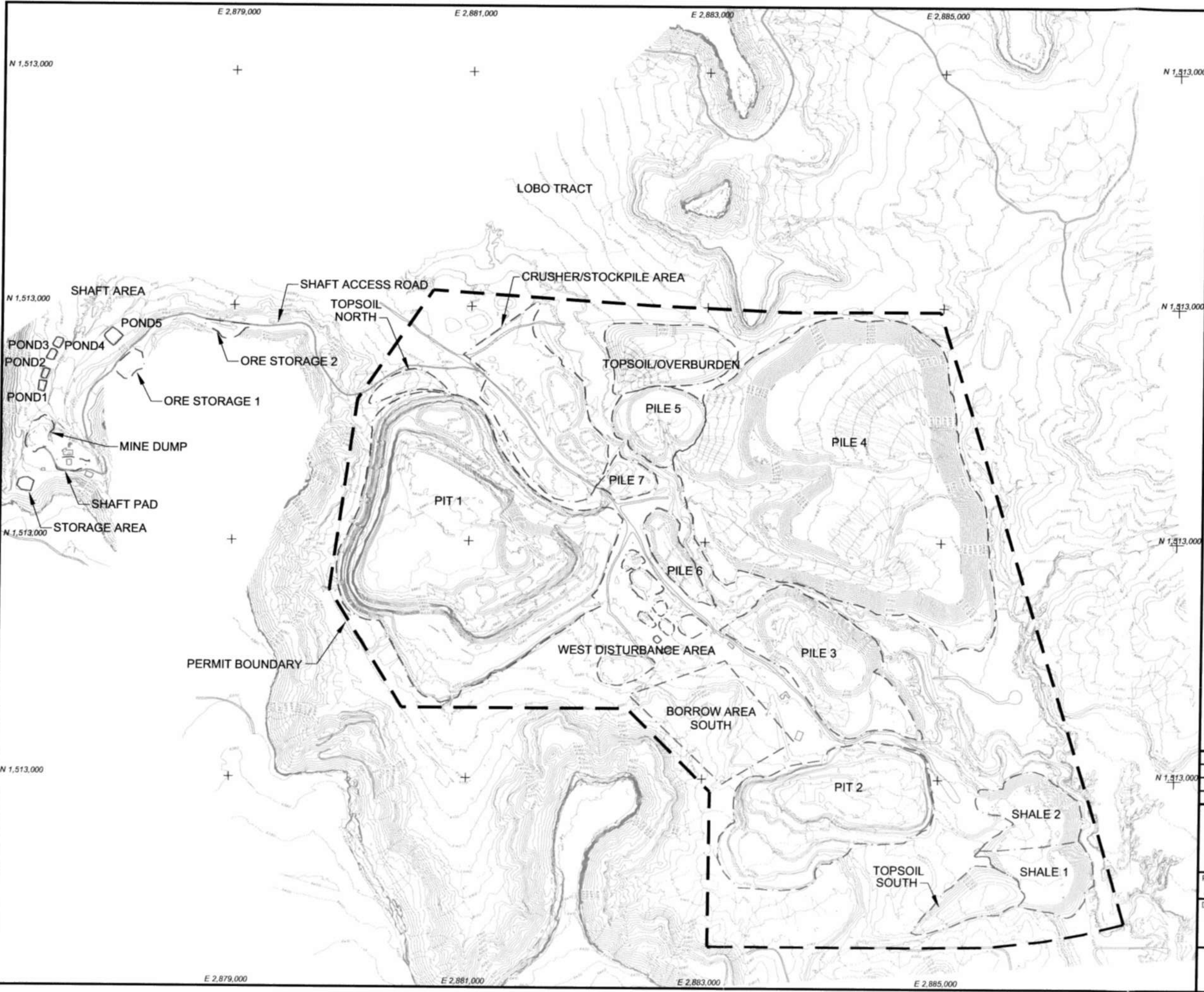
1	FINAL	10/07	T. Lesson	C. Fowler		
0	DRAFT	10/07	T. Lesson	C. Fowler		
REV. NO.	REVISIONS	DATE	DESIGN BY	DRAWN BY	REVIEWED AND SIGNED BY	
			PROJECT No. 1006190		AutoCAD FILE UNC: Gen. Location\mg	
			SCALE		FIGURE No.	
			No. 10 Scale		1	



ST. ANTHONY MINE
MATERIALS CHARACTERIZATION REPORT

SITE LOCATION

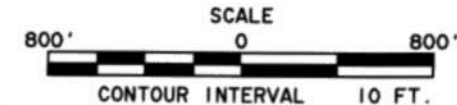
L:\1005160 UNC St. Anthony\dwg\Materials Characterization Report Final\Sheet Set Drawings\2 SITE LAYOUT



LEGEND

- CURRENT TOPOGRAPHY
- FACILITY BOUNDARY
- PERMIT BOUNDARY
- ROAD
- STREAM
- COORDINATE GRID

NOTES:
 1. SURFACE TOPOGRAPHY GENERATED FROM AERIAL PHOTOGRAPHS DATED MAY 2007 BY COOPER AERIAL SURVEYS CO. NEW MEXICO WEST STATE PLANE COORDINATES, NAD 83.



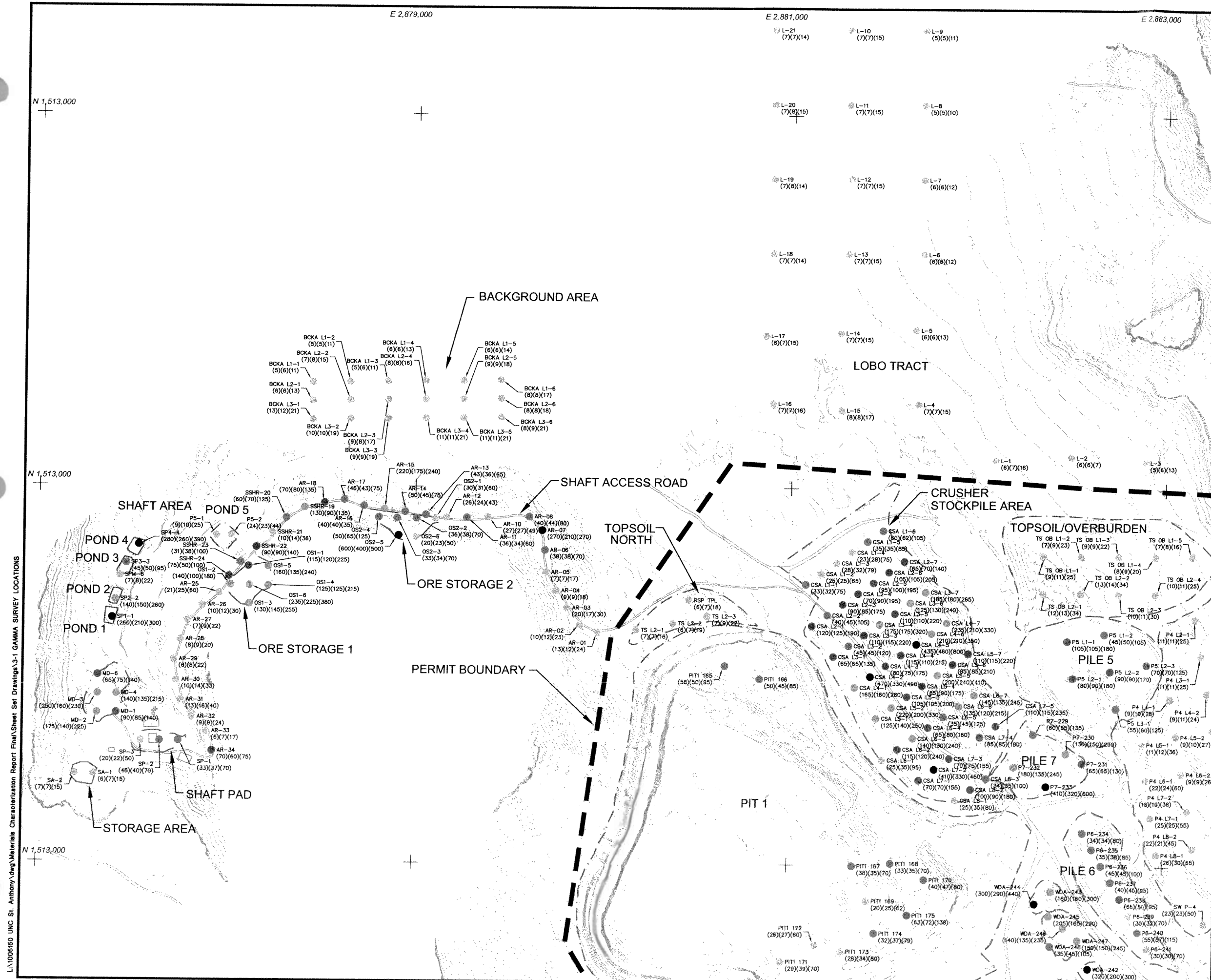
1	Final	10/2007	T.Lesson	C.Fowler	C.Faulk
0	Draft	10/2007	T.Lesson	C.Fowler	C.Faulk
REV. No.	REVISIONS	DATE	DESIGN BY	DRAWN BY	REVIEWED AND SIGNED BY

UNC P.O. BOX 3077
 Gallup, New Mexico 87305-3077
ST ANTHONY MINE

PROJECT: **MATERIALS CHARACTERIZATION REPORT**
 DRAWING TITLE: **SITE LAYOUT**



Sheet 1 Of 1 Sheets
 SCALE: As Shown
 FIGURE No. 2



LEGEND

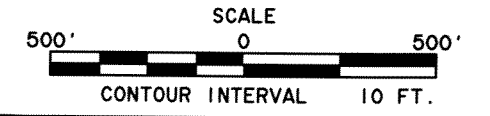
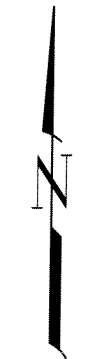
- CURRENT TOPOGRAPHY
- - - FACILITY BOUNDARY
- PERMIT BOUNDARY
- ROAD
- STREAM
- E 2,881,000
+ COORDINATE GRID

GAMMA SURVEY LOCATIONS (µR/hr)

- 0 ~ 30
- 31 ~ 60
- 61 ~ 120
- 121 ~ 250
- 250 ~ 600
- (6)(7)(16) (CS)(1mS)(1mU)

CS = CONTACT SHIELDED
 1mS = 1 METER SHIELDED
 1mU = 1 METER UNSHIELDED

NOTES:
 1. GAMMA MEASUREMENTS WITHIN, NORTH AND EAST OF THE PERMIT BOUNDARY WERE COLLECTED APRIL - MAY 2006. GAMMA MEASUREMENTS IN THE WESTERN SHAFT AREA AND THE LOBO TRACT BORROW AREA WERE COLLECTED JUNE 2007.



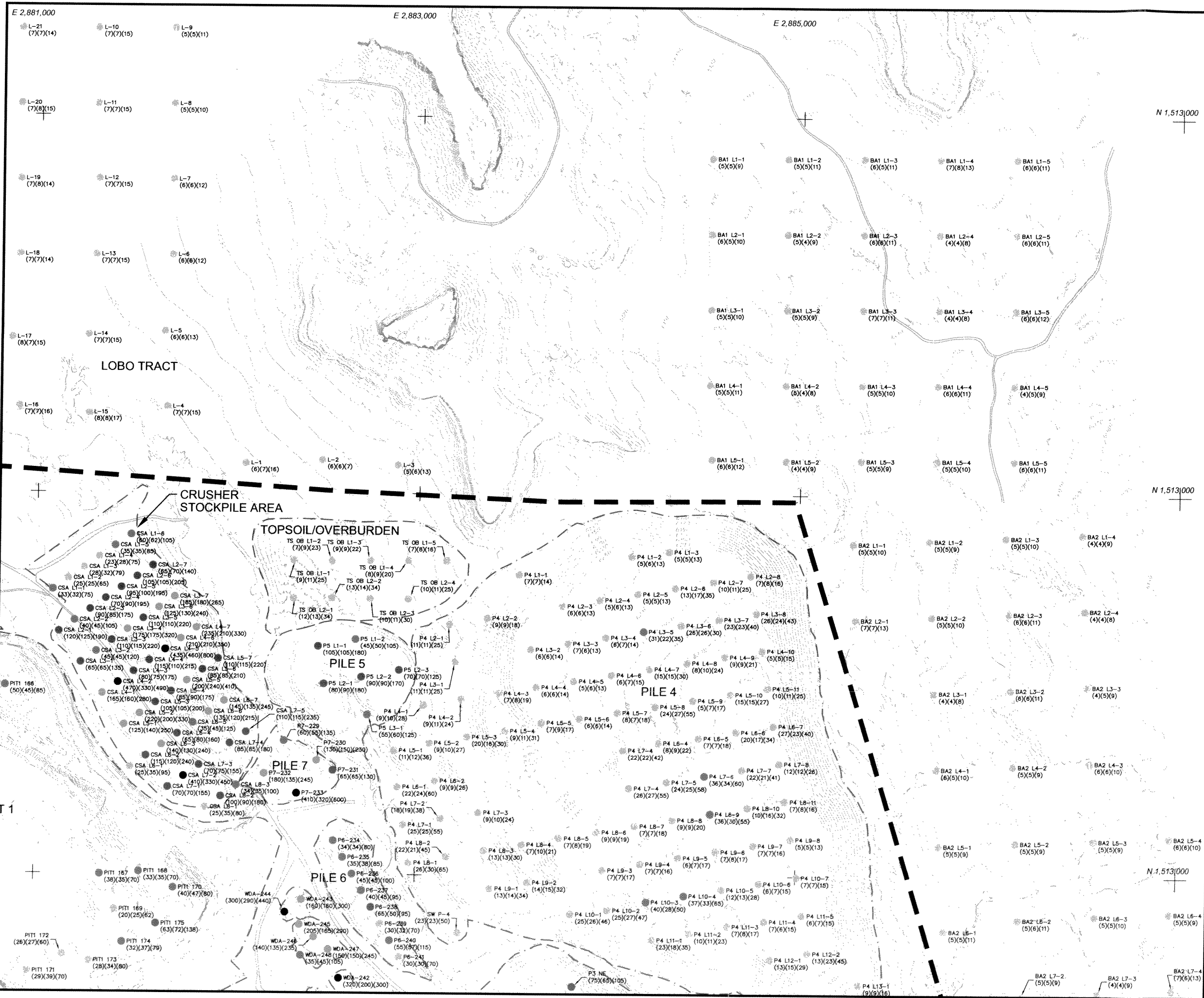
REV. NO.	REVISIONS	DATE	DESIGN BY	DRAWN BY	REVIEWED AND SIGNED BY
1	Final	10/2007	T.Leeson	C.Fowler	C.Foult
0	Draft	10/2007	T.Leeson	C.Fowler	C.Foult

UNC P.O. BOX 3077
 Gallup, New Mexico 87305-3077
ST ANTHONY MINE

PROJECT: **MATERIALS CHARACTERIZATION REPORT**
 DRAWING TITLE: **RESULTS OF FIELD GAMMA RADIATION SURVEY**

MWH Sheet 1 Of 3 Sheets
 SCALE: As Shown FIGURE No. 3

L:\005160 UNC St. Anthony.dwg Materials Characterization Report Final\Sheet Set Drawings\3-1 GAMMA SURVEY LOCATIONS



LEGEND

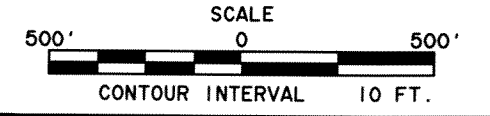
- CURRENT TOPOGRAPHY
- FACILITY BOUNDARY
- PERMIT BOUNDARY
- ROAD
- STREAM
- COORDINATE GRID

GAMMA SURVEY LOCATIONS (µR/hr)

- 0 ~ 30
 - 31 ~ 60
 - 61 ~ 120
 - 121 ~ 250
 - 250 ~ 600
- (6)(7)(16) (CS)(1mS)(1mU)

CS = CONTACT SHIELDED
 1mS = 1 METER SHIELDED
 1mU = 1 METER UNSHIELDED

NOTES:
 1. GAMMA MEASUREMENTS WITHIN, NORTH AND EAST OF THE PERMIT BOUNDARY WERE COLLECTED APRIL - MAY 2006. GAMMA MEASUREMENTS IN THE WESTERN SHAFT AREA AND THE LOBO TRACT BORROW AREA WERE COLLECTED JUNE 2007.



1	Final	10/2007	T.Lesson	C.Fowler	C.Fouk
0	Draft	10/2007	T.Lesson	C.Fowler	C.Fouk
REV. No.	REVISIONS	DATE	DESIGN BY	DRAWN BY	REVIEWED AND SIGNED BY

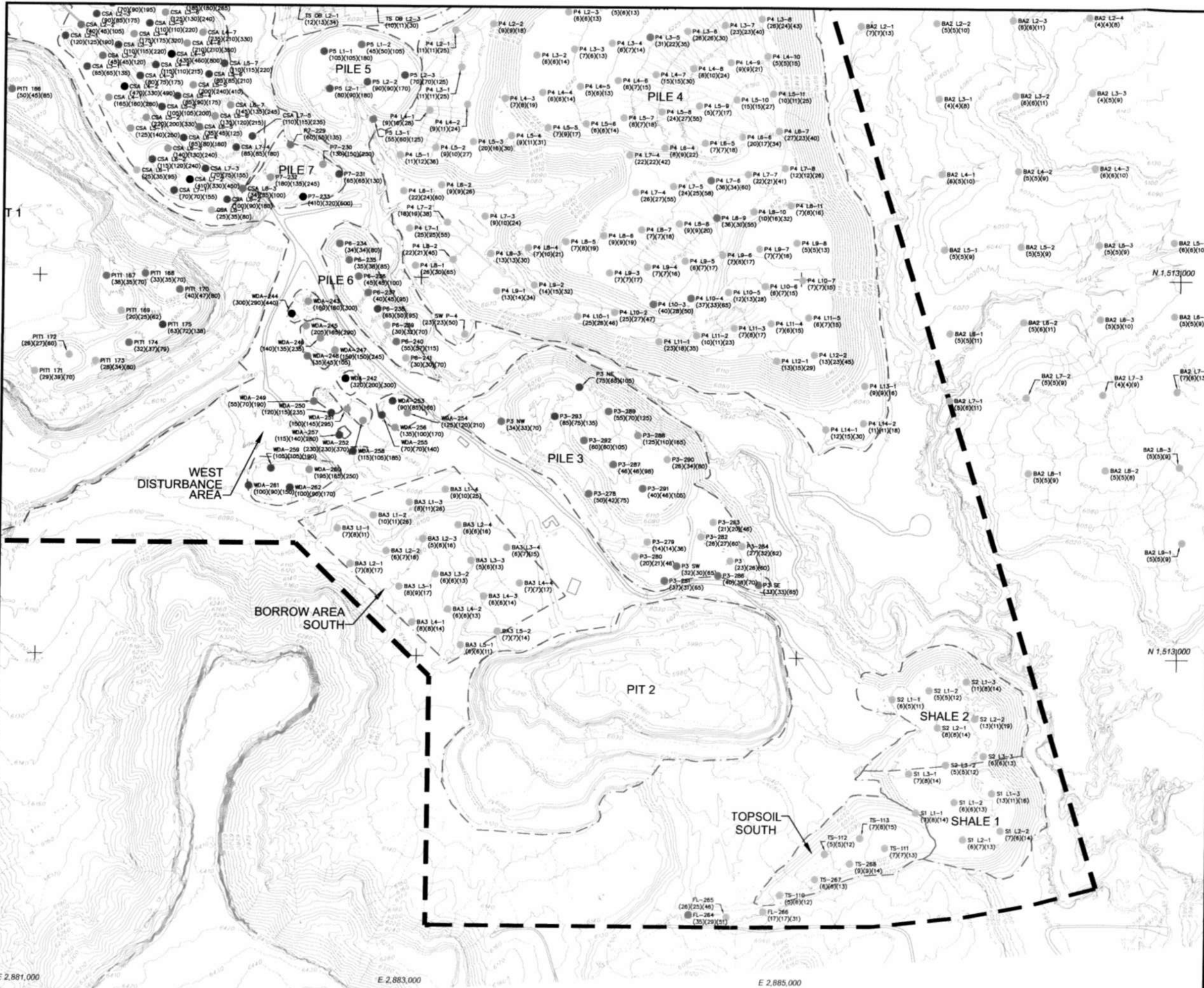
P.O. BOX 3077
 Gallup, New Mexico 87305-3077
ST ANTHONY MINE

PROJECT:
MATERIALS CHARACTERIZATION REPORT
 DRAWING TITLE:
RESULTS OF FIELD GAMMA RADIATION SURVEY

Sheet 2 Of 3 Sheets
 SCALE: As Shown FIGURE No. **3**

L:\1005160 UNC St. Anthony.dwg Materials Characterization Report Final\Sheet Set Drawings\3-2 GAMMA SURVEY LOCATIONS

L:\1005160 UNC St. Anthony.dwg Materials Characterization Report FinalSheet Set Drawing\3-3 RESULTS OF FIELD GAMMA RADIATION SURVEY



LEGEND

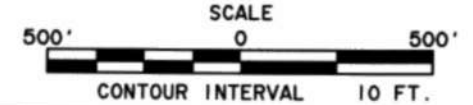
- CURRENT TOPOGRAPHY
- - - FACILITY BOUNDARY
- - - PERMIT BOUNDARY
- ROAD
- STREAM
- E 2,881,000 COORDINATE GRID
- + CROSSHAIR

GAMMA SURVEY LOCATIONS (µR/hr)

- 0 ~ 30
 - 31 ~ 60
 - 61 ~ 120
 - 121 ~ 250
 - 250 ~ 600
- (6)(7)(16) (CS)(1mS)(1mU)

CS = CONTACT SHIELDED
 1mS = 1 METER SHIELDED
 1mU = 1 METER UNSHIELDED

NOTES:
 1. GAMMA MEASUREMENTS WITHIN, NORTH AND EAST OF THE PERMIT BOUNDARY WERE COLLECTED APRIL - MAY 2006. GAMMA MEASUREMENTS IN THE WESTERN SHAFT AREA AND THE LOBO TRACT BORROW AREA WERE COLLECTED JUNE 2007.



1	Final	10/2007	T.Lesson	C.Foster	C.Faulk
0	Draft	10/2007	T.Lesson	C.Foster	C.Faulk
REV. NO.	REVISIONS	DATE	DESIGN BY	DRAWN BY	REVIEWED AND SIGNED BY



P.O. BOX 3077
 Gallup, New Mexico 87305-3077

ST ANTHONY MINE

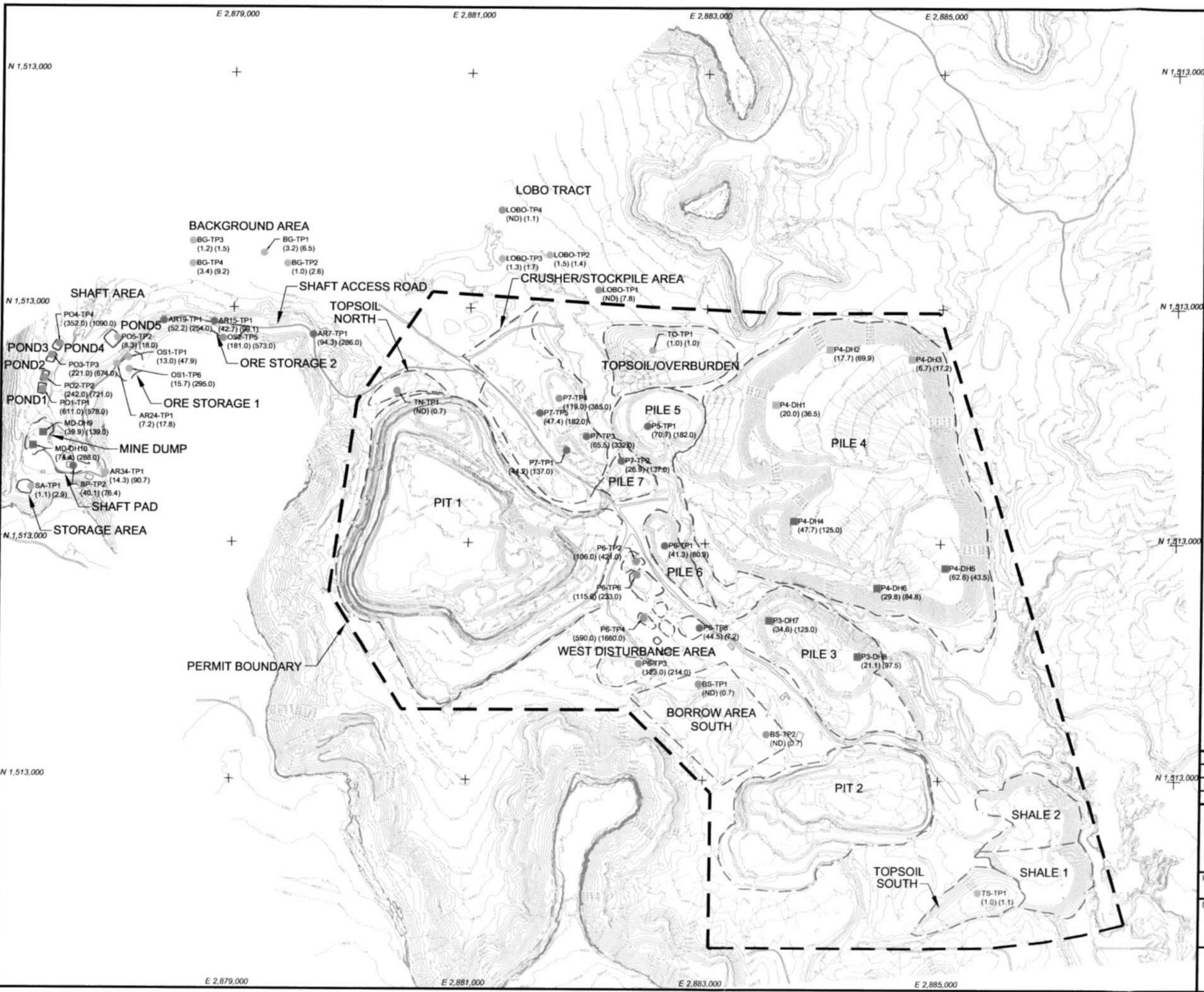
PROJECT: **MATERIALS CHARACTERIZATION REPORT**

DRAWING TITLE: **RESULTS OF FIELD GAMMA RADIATION SURVEY**



Sheet 3 Of 3 Sheets
 SCALE: As Shown
 FIGURE No. 3

L:\1005160 UNC St. Anthony\veg\Materials Characterization Report Final\Sheet Set Drawings\4 SOIL ANALYTICAL RESULTS



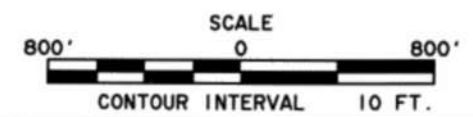
LEGEND

- CURRENT TOPOGRAPHY
- FACILITY BOUNDARY
- PERMIT BOUNDARY
- ROAD
- STREAM
- COORDINATE GRID
- TEST PIT
- DRILL HOLE

MAXIMUM SOIL ANALYTICAL RESULTS Ra-226 (pCi/g)

- <= 20
 - 21 ~ 100
 - > 100
- (17.7) (69.9) (Ra)(U)
(ND) NON DETECT
- Ra = RADIUM-226 (pCi/g)
U = TOTAL URANIUM (mg/Kg)

NOTES:
1. THE CONCENTRATIONS SHOWN ARE THE HIGHEST DETECTED VERTICALLY IN ALL SAMPLES FROM EACH LOCATION. COMPLETE RESULTS ARE SHOWN IN TABLE 5.



REV. No.	REVISIONS	DATE	DESIGN BY	DRAWN BY	REVIEWED AND SIGNED BY
1	Final	10/2007	T.Lesson	C.Fowler	C.Folk
0	Draft	10/2007	T.Lesson	C.Fowler	C.Folk



P.O. BOX 3077
Gallup, New Mexico 87305-3077
ST ANTHONY MINE

PROJECT: **MATERIALS CHARACTERIZATION REPORT**

DRAWING TITLE: **SOIL ANALYTICAL RESULTS**



Sheet 1 Of 1 Sheets
SCALE: As Shown
FIGURE No. 5