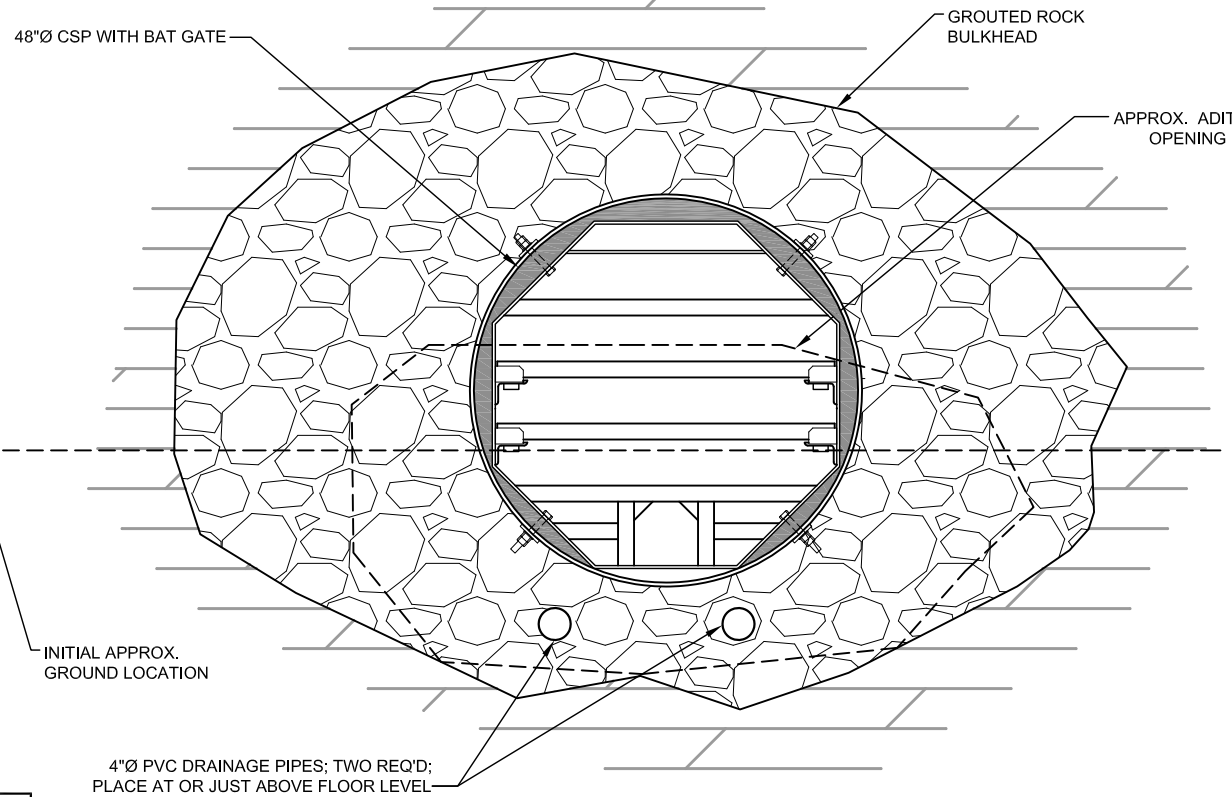




VIEW FROM INNER ADIT LOOKING OUT



INNER ADIT TO BE MUCKED OPEN



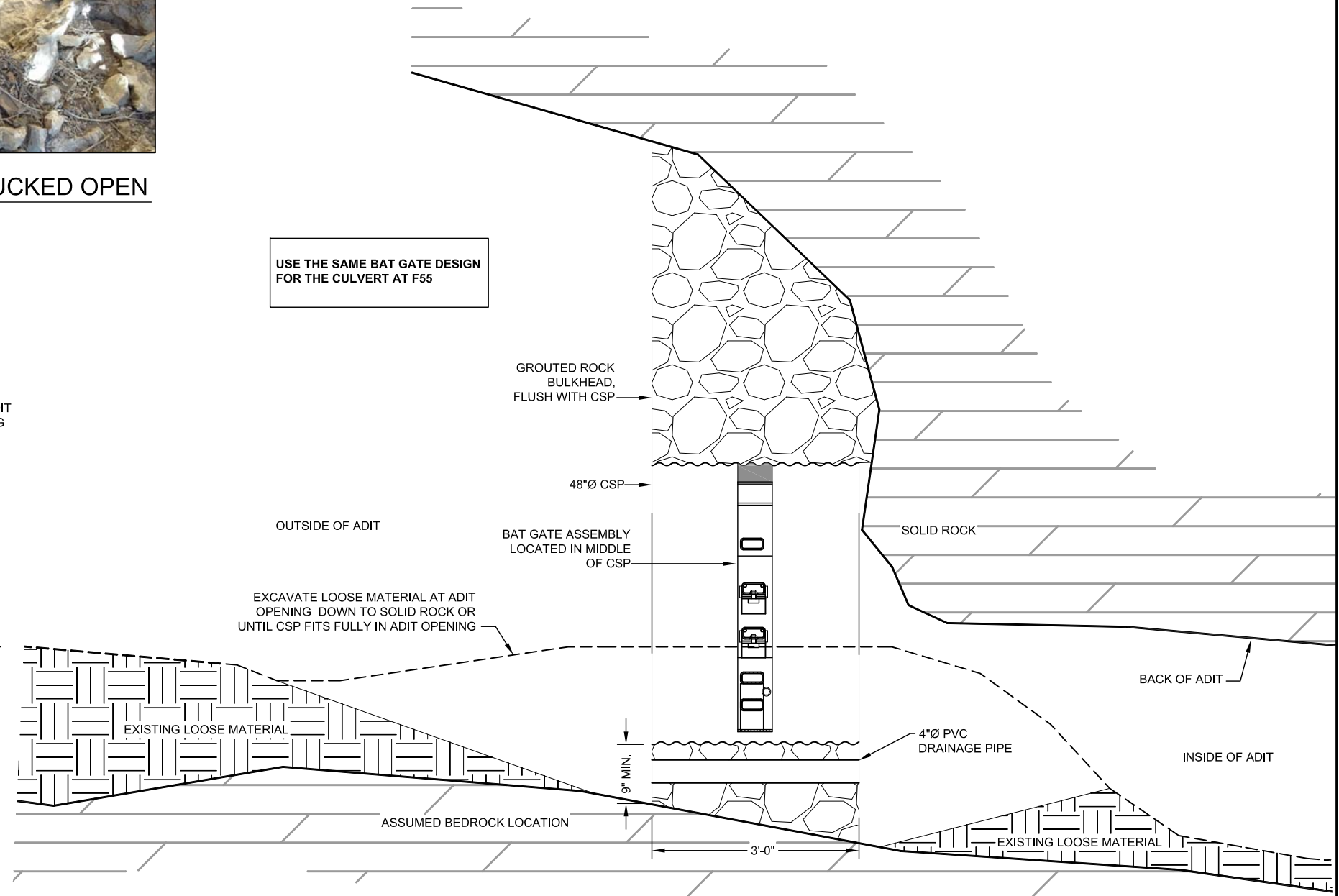
FRONT VIEW

SCALE: 1/2" = 1'-0"

GENERAL NOTES:

1. THE SHAPE AND DIMENSIONS SHOWN FOR THE EXISTING ADIT OPENING ARE APPROXIMATE. FIELD VERIFY ALL DIMENSIONS BEFORE FABRICATION.
2. STEEL PLATES AND SHAPES SHALL BE WEATHERING STEEL. WELD ALL JOINTS. CONSTRUCT THE BAT GATE TO ELIMINATE SURFACES ON WHICH MOISTURE OR DEBRIS CAN BE TRAPPED. ALL TUBULAR MEMBERS SHALL BE HERMETICALLY SEALED TO PREVENT THE INCURSION OF MOISTURE, EXCEPT AS OTHERWISE NOTED. ROUND OR CHAMFER ALL EXPOSED SHARP CORNERS AND EDGES.
3. DOUBLE-NUT ALL BOLTS. NUTS AND BOLTS SHALL BE STAINLESS STEEL.
4. LOCATE GROUDED ROCK BULKHEAD AT INNER ADIT ENTRANCE AS DIRECTED BY THE PROJECT MANAGER AND PRESERVE THE EXISTING TREE AS FEASIBLE. MUCK OUT THE INNER ADIT BY MOVING TWO CUBIC YARDS OF MATERIAL OUTWARDS AND PLACE TO THE SIDE AND OUT OF THE WAY AS DIRECTED BY THE PROJECT MANAGER.
5. WATER FLOWING INTO THE ADIT FACILITATES BAT HABITAT. MAINTAIN CURRENT FLOW PATTERNS AS FEASIBLE.
6. ROCK FOR THE BULKHEAD SHALL BE SOUND, DURABLE NATIVE ROCK THAT GIVES A RINGING SOUND WHEN STRUCK WITH A HAMMER.
7. PROPORTION AND MIX CONCRETE FOR THE BULKHEAD TO PRODUCE A MINIMUM COMPRESSIVE STRENGTH OF 3,000 PSI AT 28 DAYS. CEMENT SHALL CONFORM TO ASTM C150 TYPE II, AND AGGREGATE TO ASTM C33, WITH A MAXIMUM SIZE OF AGGREGATE OF 3/4 -INCH. PACKAGED CONCRETE MIX MEETING ASTM C378 MAY BE USED..
8. STAIN VISIBLE PORTIONS OF CSP (INSIDE AND OUTSIDE) WITH NATINA GALVANIZED METAL COLORANT (PROVIDED BY THE PROJECT MANAGER) FOR CAMOUFLAGE.
9. PLACE A SURVEY MARKER, PROVIDED BY THE PROJECT MANAGER, INTO THE ROCK BULKHEAD BEFORE CONCRETE CURES.

USE THE SAME BAT GATE DESIGN FOR THE CULVERT AT F55



SECTION

SCALE: 1/2" = 1'-0"

CAUTION - THIS PROJECT REQUIRES CONSTRUCTION WORK IN, AROUND, AND OVER HAZARDOUS AND UNPROTECTED MINE SHAFTS, STOPES, ADITS, AND OTHER OPENINGS WHICH MAY BE OPEN TO THE SURFACE OR HIDDEN FROM VIEW BY TRASH, DEBRIS, OR THIN AND UNSTABLE LAYERS OF SURFACE MATERIALS OR ROCK. THE CONSTRUCTOR SHALL BE RESPONSIBLE FOR THOROUGHLY INVESTIGATING THE SITE CONDITIONS AND SCHEDULING EQUIPMENT, PERSONNEL, AND SAFETY PROCEDURES TO PREVENT ACCIDENTS AND INJURIES.

ABANDONED MINE LAND PROGRAM MINING AND MINERALS DIVISION NEW MEXICO ENERGY, MINERALS, AND NATURAL RESOURCES DEPARTMENT		
SCALE: AS SHOWN	F77 ADIT	DRAWN BY: MWT
DATE: 5/10/2016		REVISED BY:
BAT GATE IN ROCK BULKHEAD		
FILE:	COOKES PEAK WEST MINE SAFEGUARD PROJECT - PH. II	FIGURE: 4