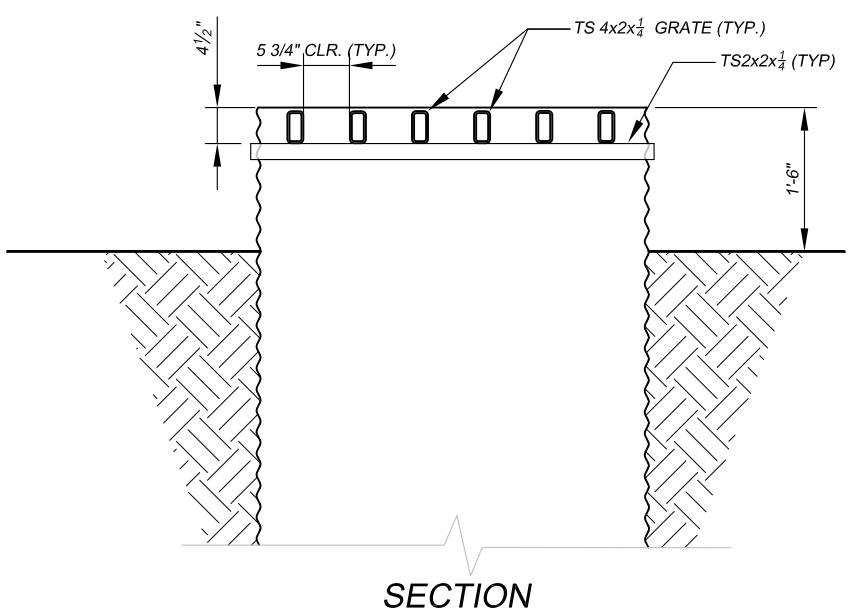
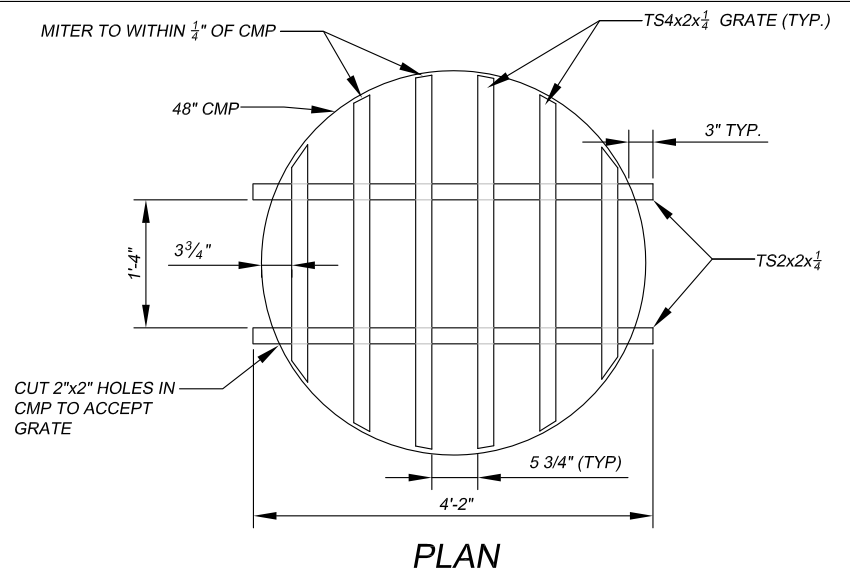
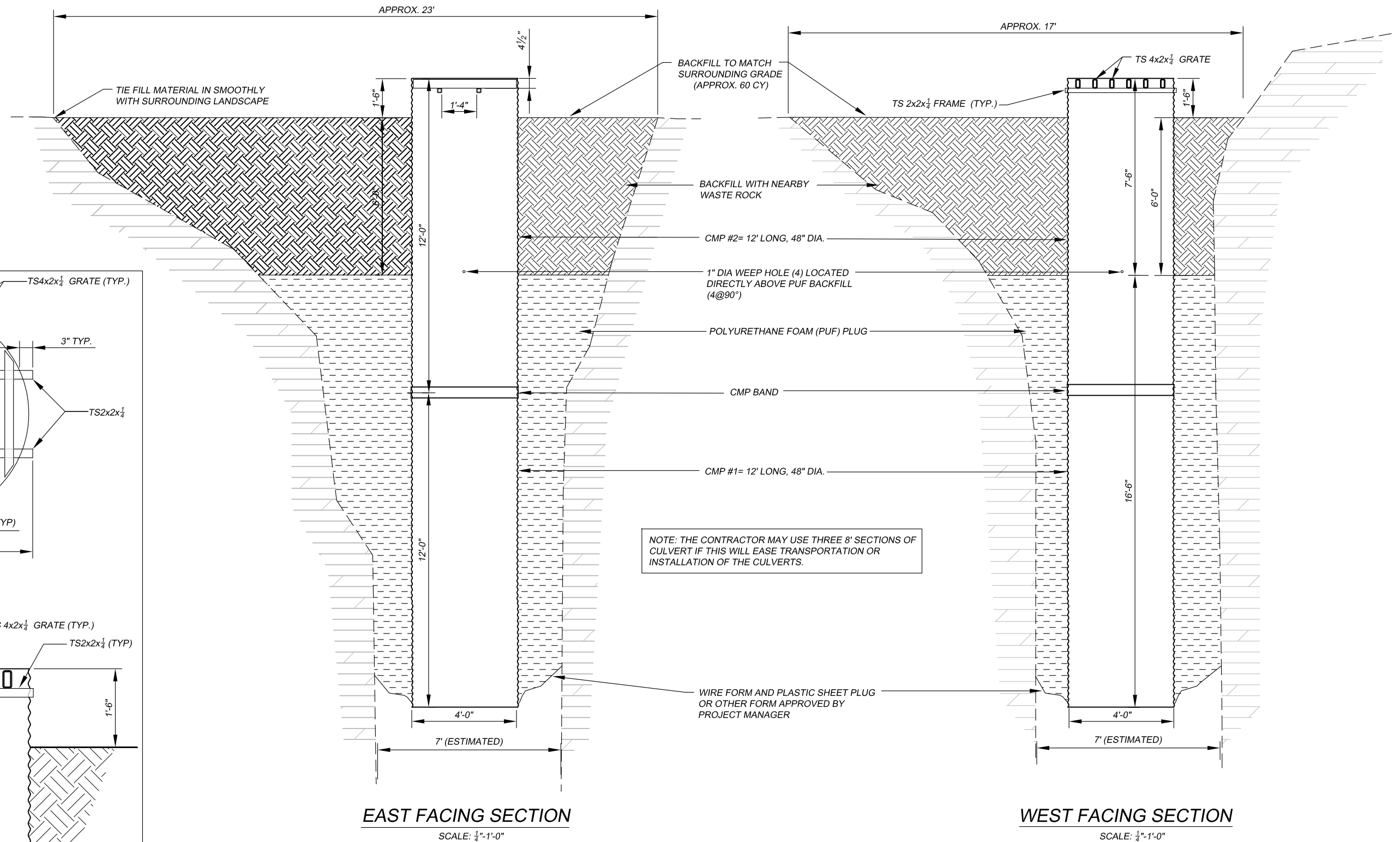


CAUTION - THIS PROJECT REQUIRES CONSTRUCTION WORK IN, AROUND, AND OVER HAZARDOUS AND UNPROTECTED MINE SHAFTS, STOPES, ADITS, HIGHWALLS AND OTHER FEATURES WHICH MAY BE UNSTABLE. THE CONTRACTOR SHALL BE RESPONSIBLE FOR THOROUGHLY INVESTIGATING THE SITE CONDITIONS AND SCHEDULING EQUIPMENT, EQUIPMENT OPERATORS, OPERATIONS, PERSONNEL AND SAFETY PROCEDURES TO PREVENT ACCIDENTS AND INJURIES.



CMP #2 AND GRATE DETAILS
SCALE: 1/2\"=1'-0"

GENERAL NOTES:

1. THIS DRAWING SHOWS THE GENERAL SHAPE AND APPROXIMATE PROFILE OF THE SHAFT AT THE INTENDED LOCATION OF THE CLOSURE. USE THE DRAWING AS A GUIDE FOR FIELD LAYOUT OF THE CLOSURE. FIELD VERIFY DIMENSIONS PRIOR TO FABRICATION.
2. TUBULAR STEEL, STEEL PLATES, AND SHAPES SHALL BE WEATHERING STEEL AS SPECIFIED. WELD ALL JOINTS. ROUND OR CHAMFER ALL SHARP EDGES AND CORNERS.
3. TOLERANCES ON THE CENTER--TO-CENTER DIMENSIONS BETWEEN POSTS SHALL BE ±1/8\".
4. BACKFILLING AND GRADING SHALL BE DONE TO THE SATISFACTION ON THE AML PROJECT MANAGER. BACKFILLED AREAS SHALL BLEND IN SMOOTHLY WITH THE SURROUNDING UNDISTURBED AREA.

ABANDONED MINE LAND PROGRAM MINING AND MINERALS DIVISION		
<small>ENERGY, MINERALS AND NATURAL RESOURCES DEPARTMENT</small>		
SCALE: AS SHOWN	SHAFT 598-52	DRAWN BY: JTG
DATE: <small>DEC. 11, 2012</small>		REVISED:
CMP/PUF PLUG		
Cleveland Mine Safeguard Project		DRAWING NUMBER: FIGURE 11