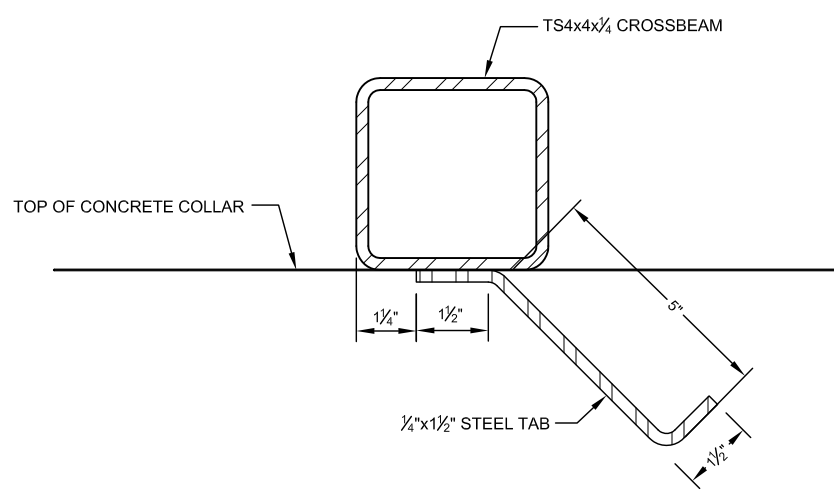
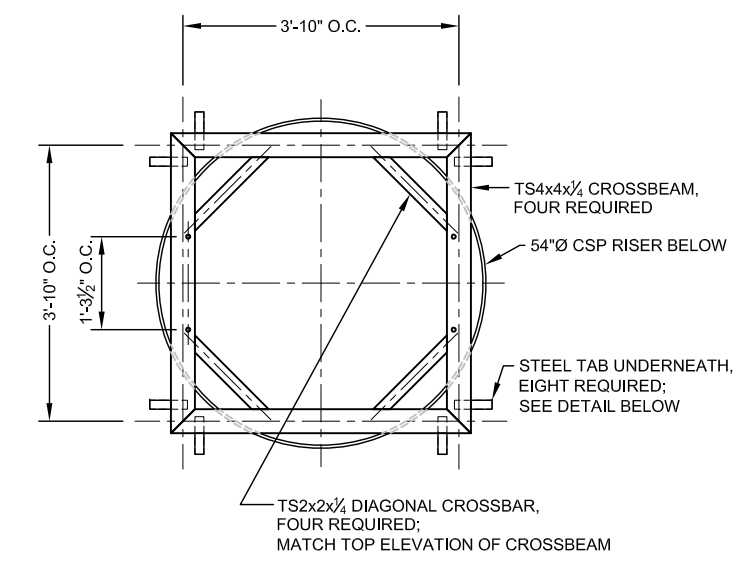
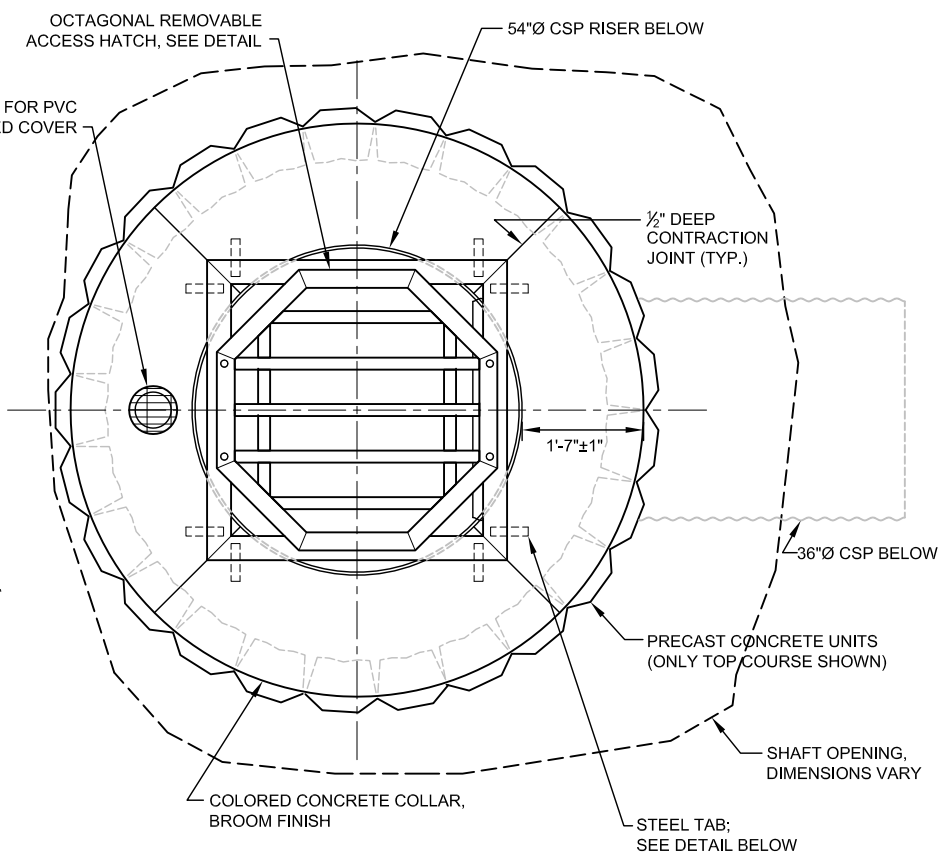


CAUTION - THIS PROJECT REQUIRES CONSTRUCTION WORK IN, AROUND, AND OVER HAZARDOUS AND UNPROTECTED MINE SHAFTS, STOPS, ADITS, AND OTHER OPENINGS WHICH MAY BE OPEN TO THE SURFACE OR HIDDEN FROM VIEW BY TRASH, DEBRIS, OR THIN AND UNSTABLE LAYERS OF SURFACE MATERIALS OR ROCK. THE CONSTRUCTOR SHALL BE RESPONSIBLE FOR THOROUGHLY INVESTIGATING THE SITE CONDITIONS AND SCHEDULING EQUIPMENT, EQUIPMENT OPERATIONS, PERSONNEL AND SAFETY PROCEDURES TO PREVENT ACCIDENTS AND INJURIES.



GENERAL NOTES:

1. THIS DRAWING SHOWS THE GENERAL SHAPES AND APPROXIMATE SIZES OF THE MINE OPENINGS AND THE CORRESPONDING LAYOUTS OF THE BAT COMPATIBLE CLOSURE AND ARCH RISER PIPE. THE DRAWING SHALL BE USED AS A GUIDE FOR FIELD LAYOUT. DETERMINE THE ACTUAL LAYOUTS AND DIMENSIONS OF THE CLOSURES IN THE FIELD PRIOR TO FABRICATION.
2. TRIM OR REMOVE EXISTING PIPES HANGING IN OPENING TO FACILITATE CONSTRUCTION. DO NOT LET THEM FALL INTO THE MINE VOID.
3. USING A COMPRESSED AIR LANCE OR EQUIVALENT, REMOVE DIRT AND LOOSE ROCK FROM ALL SURFACES AGAINST WHICH POLYURETHANE FOAM (PUF) WILL BE PLACED. PLACE PUF AGAINST CLEAN, DRY SURFACES.
4. STEEL PLATES, SHAPES AND BARS SHALL BE WEATHERING STEEL. WELD ALL JOINTS. CONSTRUCT THE AIRFLOW CLOSURE ASSEMBLY TO ELIMINATE SURFACES ON WHICH MOISTURE OR DEBRIS CAN BE TRAPPED. PLIES OF MATERIAL SHALL BE TIGHT TO PREVENT THE INCURSION OF MOISTURE. ALL TUBULAR MEMBERS SHALL BE HERMETICALLY SEALED TO PREVENT THE INCURSION OF MOISTURE, EXCEPT AS OTHERWISE NOTED. ROUND OR CHAMFER ALL EXPOSED SHARP CORNERS AND EDGES.
5. MINIMIZE THE AMOUNT OF ROCK, TIMBER AND OTHER DEBRIS THAT FALL INTO THE MINE OPENINGS DURING CONSTRUCTION.
6. THOROUGHLY COMPACT ALL FILL UNDERNEATH THE PRECAST CONCRETE MASONRY UNITS AND CONCRETE COLLAR.
7. INSTALL PRECAST CONCRETE UNITS AS SPECIFIED, INCLUDING APPLICATION OF SPECIFIED CONSTRUCTION ADHESIVE AT THE TOP TWO COURSES.
8. SLOPE THE FINISH GRADE TO DRAIN STORM WATER AWAY FROM THE COLLAR.

ABANDONED MINE LAND PROGRAM		
MINING AND MINERALS DIVISION NEW MEXICO ENERGY, MINERALS, AND NATURAL RESOURCES DEPARTMENT		
SCALE: AS SHOWN	AML 42.10	DRAWN BY: MWT
DATE: 9/5/07		REVISED BY:
EXISTING BAT COMPATIBLE CLOSURE (AS-BUILT)		
FILE:	OROGRANDE MINE DISTRICT MAINTENANCE PROJECT	FIGURE: 2