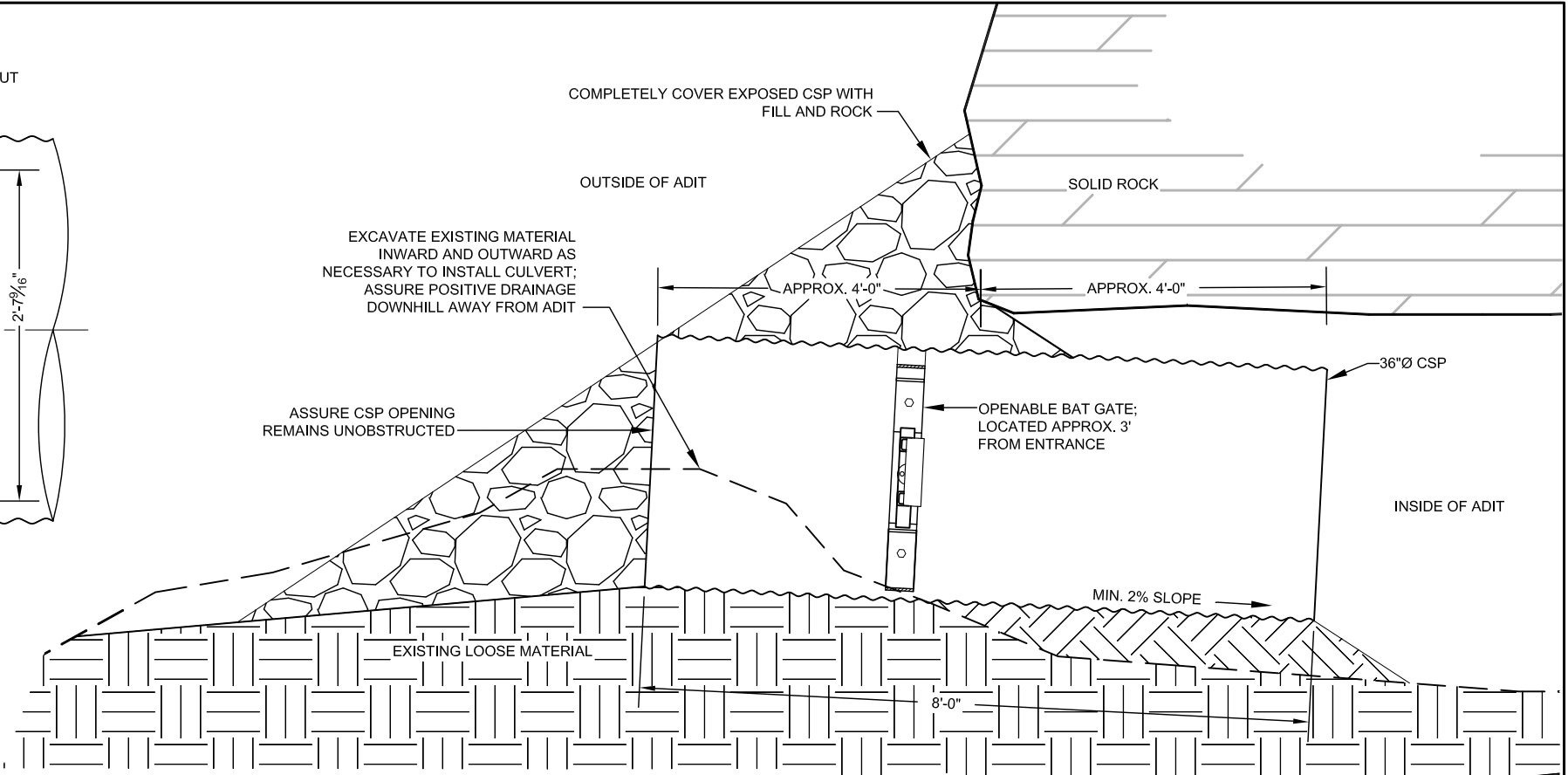


ELEVATION

SECTION

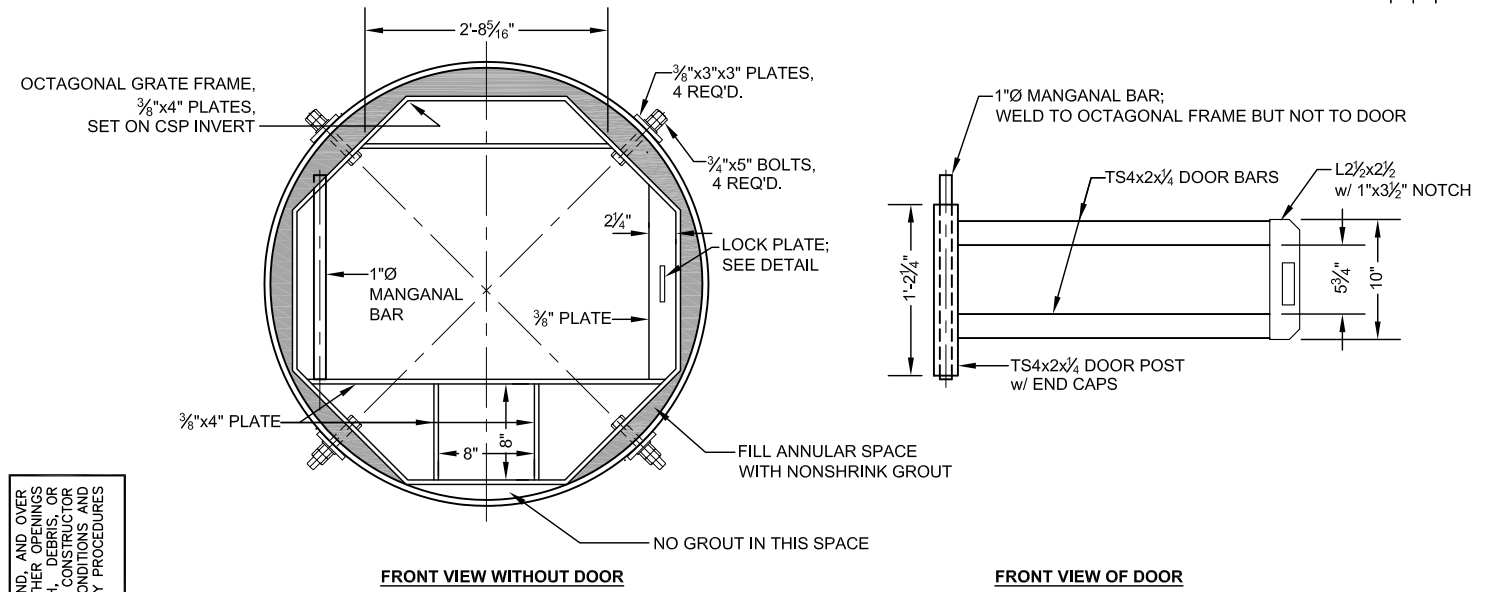
BAT GATE ASSEMBLY

SCALE: 3/4" = 1'-0"



SECTION

SCALE: 1/2" = 1'-0"

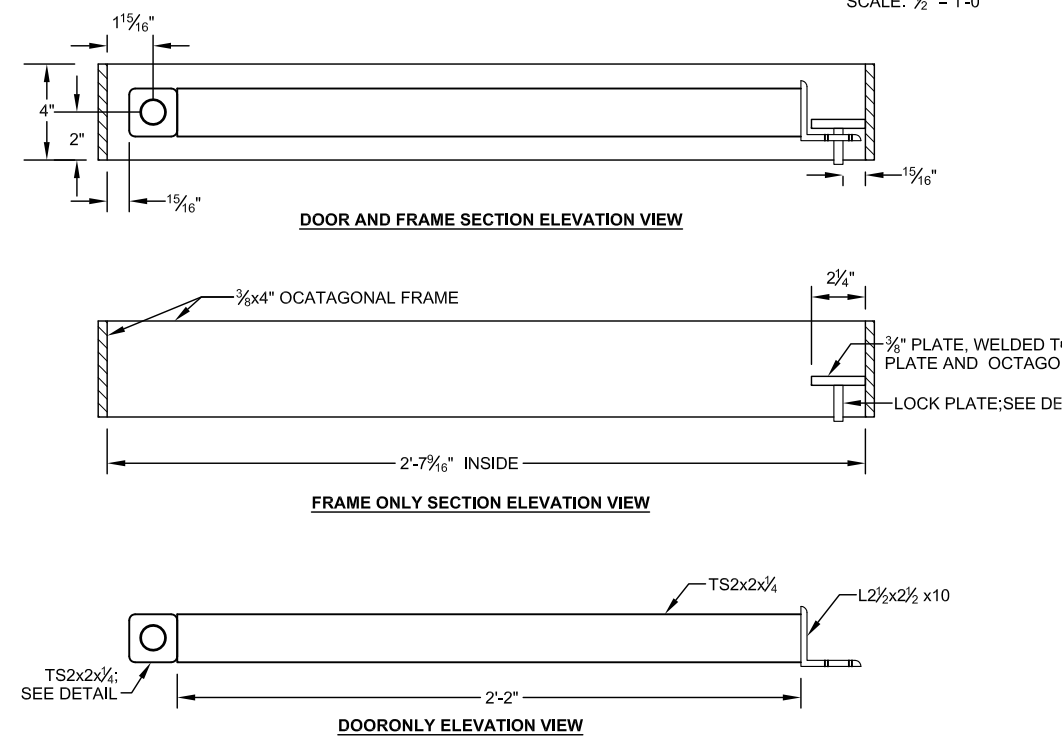


FRONT VIEW WITHOUT DOOR

FRONT VIEW OF DOOR

BAT GATE ASSEMBLY (FRONT VIEW WITHOUT CSP)

SCALE: 3/4" = 1'-0"



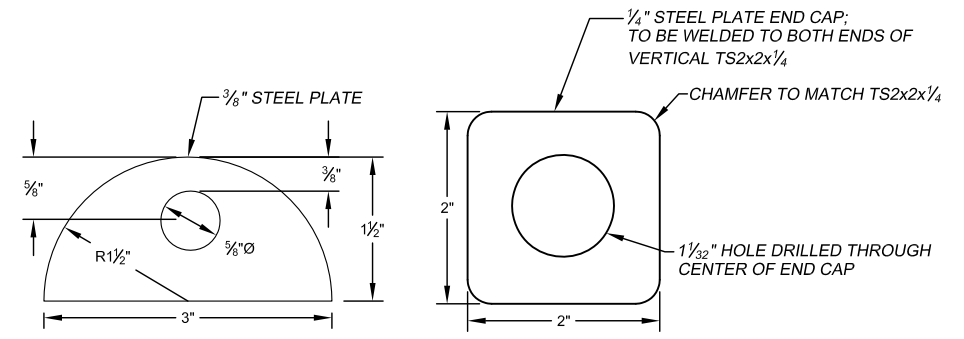
DOOR AND FRAME SECTION ELEVATION VIEW

FRAME ONLY SECTION ELEVATION VIEW

DOOR ONLY ELEVATION VIEW

ELEVATION VIEWS OF DOOR ASSEMBLY

SCALE: 1/2" = 1'-0"



LOCK PLATE AND END CAP DETAILS

SCALE: 6" = 1'-0"

GENERAL NOTES:

1. THE SHAPE AND DIMENSIONS SHOWN AT THE EXISTING ADIT OPENING ARE APPROXIMATE. FIELD VERIFY ALL DIMENSIONS BEFORE FABRICATION.
2. STEEL PLATES AND SHAPES FOR THE BAT GATE ASSEMBLY SHALL BE WEATHERING STEEL AS SPECIFIED. WELD ALL JOINTS. PLATES FOR BOLTS, BOLTS AND NUTS SHALL BE WEATHERING OR STAINLESS STEEL. DOUBLE-NUT ALL BOLTS. ROUND OR CHAMFER ALL EXPOSED EDGES AND CORNERS.
3. COMMON FILL IS UNCLASSIFIED; MINE WASTE MATERIAL IS ACCEPTABLE. MATERIAL WITHIN ONE FOOT OF THE CORRUGATED STEEL PIPE SHALL BE SMALLER THAN THREE INCHES. THOROUGHLY COMPACT ALL FILL MATERIAL BELOW AND WITHIN TWO FEET OF THE SIDES OF THE CSP TO MINIMIZE SETTLEMENT.
4. ROCK PLATING SHALL BE SOUND, DURABLE NATIVE ROCK AS LARGE AS PRACTICABLE AND NO SMALLER THAN 6" IN LEAST DIMENSION. PLACE ROCK PLATING AS SHOWN AND ACROSS FULL WIDTH OF ADIT OPENING. DO NOT BLOCK THE CSP OPENING.
5. GROUT SHALL BE CONSTRUCTION GRADE.
6. PAINT VISIBLE PORTIONS OF CSP (INSIDE AND OUTSIDE) WITH NATINA STAIN OR APPROVED EQUIVALENT FOR CAMOUFLAGE. COLOR SHOULD BLEND IN WITH THE ROCK BULKHEAD AS DIRECTED BY THE PROJECT MANAGER.
7. PADLOCK WILL BE PROVIDED BY BLM OR MINERAL CLAIMANT.
8. INSTALL SURVEY MARKER INTO GROUT OR ADJACENT COMPETENT ROCK AS DIRECTED BY THE PROJECT MANAGER.

CAUTION - THIS PROJECT REQUIRES CONSTRUCTION WORK IN, AROUND, AND OVER
 UNSTABLE MATERIALS. UNSTABLE MATERIALS MAY BE OPEN TO THE PUBLIC. ALL WORKING
 AREAS MUST BE PROPERLY FENCED OFF AND ALL ACCESS TO UNSTABLE MATERIALS
 MUST BE RESTRICTED. THE CONTRACTOR SHALL BE RESPONSIBLE FOR THOROUGHLY INVESTIGATING THE SITE CONDITIONS AND
 SCHEDULING EQUIPMENT, EQUIPMENT OPERATIONS, PERSONNEL AND SAFETY PROCEDURES
 TO PREVENT ACCIDENTS AND INJURIES.

ABANDONED MINE LAND PROGRAM		
MINING AND MINERALS DIVISION		
NEW MEXICO ENERGY, MINERALS, AND NATURAL RESOURCES DEPARTMENT		
SCALE: AS SHOWN	FEATURE 7-20	DRAWN BY:
DATE:		REVISED BY:
CULVERT WITH BAT GATE		
FILE:	CERRILLOS CENT./BONANZA CRK MINE SAFEGUARD PROJECT-PH III	FIGURE: 8