

State of New Mexico  
Energy, Minerals and Natural Resources Department  
Mining and Minerals Division (MMD)  
Jerry Schoeppner, Director

Mining Act Reclamation Program  
David Otori, Permit Lead  
David.Otori@state.nm.us

Little Rock Mine  
Permit Revision 20-1 Application  
Expansion & Updated Closeout Plan

Public Hearing  
June 3, 2021

# Public Hearing Purpose

This Hearing serves a number of purposes:

- 1) Freeport-McMoRan Tyrone Inc. (FMTI) will present information on the Little Rock Mine expansion & updated Closeout Plan.
- 2) MMD will describe its process to review the Little Rock Mine expansion & updated Closeout Plan application in accordance with the New Mexico Mining Act Rules.
- 3) The Gila Resources Information Project (GRIP) will present their comments.
- 4) The public is invited to ask questions and comment on the Little Rock Mine expansion & updated Closure/Closeout Plan (updated CCP).

# New Mexico Mining Act Rules (19.10.5 NMAC)

A Permit Revision Application is processed by MMD under Part 5 of the Mining Act Rules (19.10.5 NMAC) addressing permitting actions for Existing Mining Operations:

*“mines that produced marketable minerals for a total of at least two years between January 1, 1970 and June 18, 1993” (19.10.1.7.E(2) NMAC).*

Little Rock Mine is permitted as an Existing Mine.

# Permit Revision Application Elements

- Permit Revision versus Modification Factors: significant environmental impact, and/or significant increase to the financial assurance (FA), and/or significantly departs from nature or scale of the permit.
- Revision Applications must include: Proof of Public Notices, Permit Application Fee, and additional information as requested by the Director.
- Also Includes: Reclamation Plan & FA Cost Estimate as applicable. The opportunity for a Public Hearing.

# Little Rock Mine Permit Revisions

- **Permit No. GR007RE** was approved by MMD December 21, 1998.
- **Revision 97-1**, incorporating the Closeout Plan into the permit was approved by MMD on December 29, 2000.
- **Revision 02-2**, for Standby Status was approved on November 22, 2004.
- **Revision 10-1**, for return to Operating Status and updating the Closeout Plan was approved December 30, 2010.
- **Revision 14-1**, for expansion of the Permit Area and Mine Area Design Limit was approved on March 7, 2016.

# Tyrone Mine Permit Modifications

- *Permit Modifications*, have been processed by MMD since 2001 for changes to the Little Rock Mine permit.
- These Modifications were approved for partial financial assurance releases for completed reclamation, clarification and minor changes to reclamation requirements, the addition of the USNR Test Plots, and changes to the financial assurance instruments.



# Little Rock Mine – Current Disturbance



Little Rock Mine Open Pit looking west from the Tyrone Mine Overlook (10/14/2020)



# Little Rock Mine – Current Disturbance



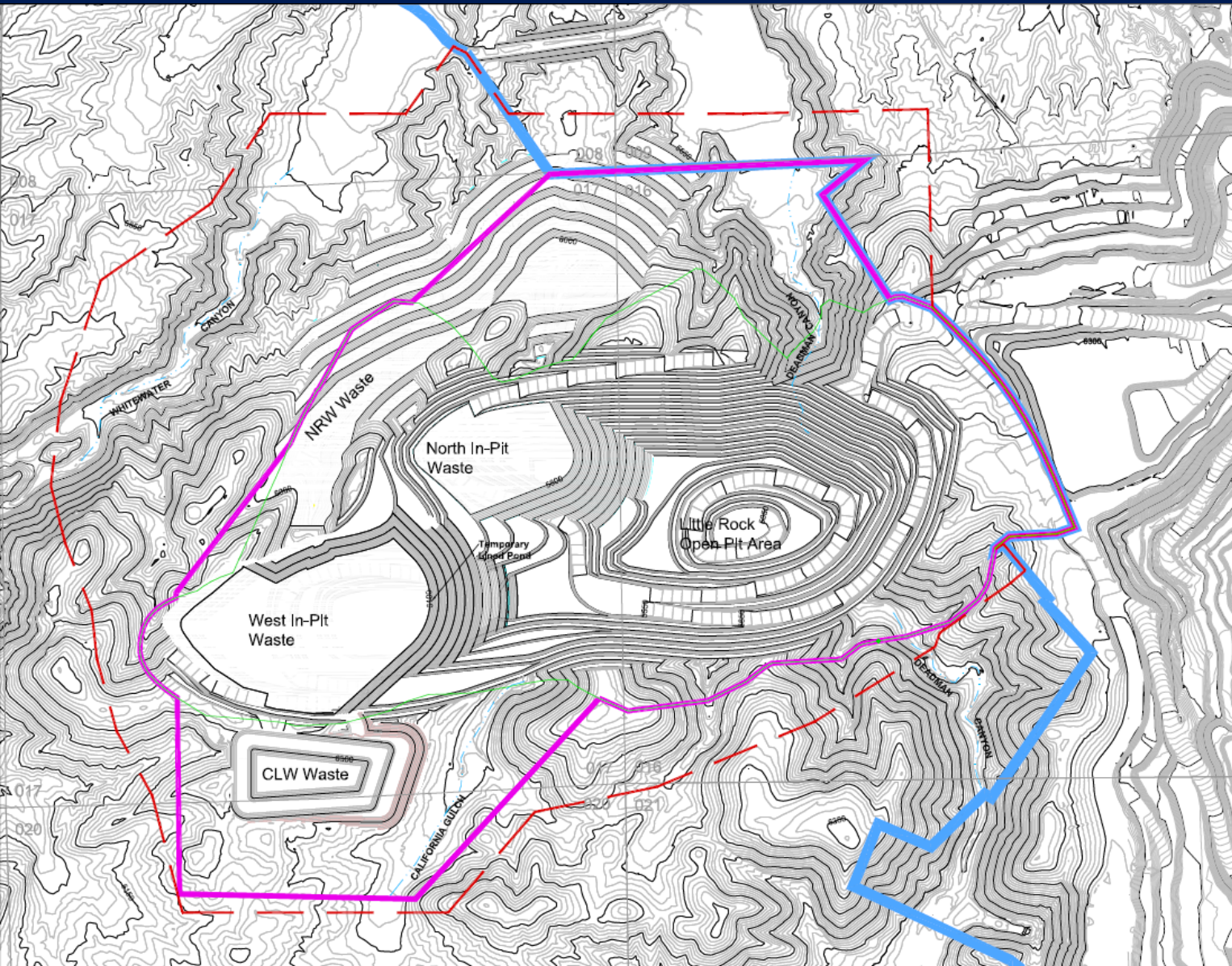
Little Rock Mine Open Pit looking east from the Open Pit Crest near the Copper Leach Stockpile (10/14/2020)



# Application for Revision 20-1

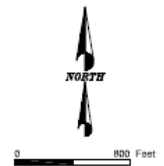
- The application for Revision 20-1 was submitted by FMTI to MMD on June 11, 2020.
- The application includes a proposed mine expansion.
- The application for Revision 20-1 includes an updated CCP.

# Application for Revision 20-1



**Notes:**

1. Source: Operational topographic surface at end of mine life. The CCP configuration represents year 2024.
2. Coordinate system In Tyrone Local Mhe.
3. Little Rock area In Wind Mountain, NM Quad Map, T19S R15W Sections 8, 9, 16, 17, 20, and 21,
4. Tyrone Permit Boundary Is pending approval of GR010RE Rev. 13-1.



**Legend**

- Major Contours (50')
- Minor Contours (10')
- Open Pit Design Limit (Permit Rev. 14-1 to Permit GR007RE)
- Existing Permit Boundary (Permit Rev. 14-1 to Permit GR007RE)
- Tyrone Permit Boundary
- Ephemeral Drainage
- Proposed Mining Area Design Limit & Permit Boundary



**Figure 3: Proposed Mining Area Design Limit and Changes to Mine Permit Boundary**

Scale: As Noted Date: 8-10-2020  
 Dept: Reclamation  
 Drawn By: [initials] Checked By: [initials]

# Application for Revision 20-1

- FMTI will present details of the proposed mine expansion and the updated CCP in their presentation. The updated CCP, in part, applies to all Little Rock Mine disturbances and affected areas.
- MMD has provided comments and comments from other state agencies to FMTI on the updated CCP and technical supplements received since June 2020. FMTI has responded to the comments in additional submittals.

# MMD Reclamation Standards

- Specified in 19.10.5.507 NMAC. Requires that the Closeout Plan specify incremental reclamation work to be done within specific time frames.
- Self-Sustaining Ecosystem (SSE) – the goal of reclamation; site-specific, life-zone appropriate.
  - 12-year time period after seeding required for vegetation re-establishment.
- Post-Mining Land-Use (PMLU)– beneficial or multiple uses established in permit area after mining.
  - PMLU is selected by the landowner (FMTI) and approved by MMD.
  - Approved PMLU's for Little Rock Mine – wildlife habitat.



# MMD Reclamation Standards

## (continued)

- Part 508, New Unit Standards – will apply to new, previously undisturbed areas, and have additional reclamation requirements.
- Waiver for Pits and Waste Units – waives the requirement to achieve the SSE and/or PMLU.
  - Requires demonstration of technical infeasibility, economic infeasibility and/or environmentally unsoundness.
  - Little Rock Mine has not applied for a Waiver for the Open Pit or Waste Units. The Open Pit and Waste Units must meet MMD reclamation requirements, SSE and PMLU.



# Little Rock Mine Reclamation (completed and proposed)

- Copper Leach Stockpile and Former Precipitation Plant Area reclaimed in 2010 to 2011.
- Other disturbances reclaimed to date include the North & West Canyon stockpiles, historic exploration drill holes and access roads outside the open pit area.
- Current proposal by FMTI in Revision 20-1 is to remove the vegetated cover of the reclaimed Copper Leach Stockpile area, excavate and haul the underlying copper bearing materials to the Tyrone Mine for processing. This area will then be used for the proposed CLW Waste Stockpile that will be reclaimed.

# Little Rock Mine Financial Assurance (FA)

- FA is based on the Cost Estimate for a Third-Party Contractor to complete the reclamation or closeout plan in the case of forfeiture. (19.10.12.1201.A NMAC)
- **Current FA approved:**
  - **\$ 2,944,583** jointly held with NMED
  - Current FA Instruments:
    - \$1,520,113 Surety Bond
    - \$1,424,470 Surety Bond
- **Proposed FA under Revision 20-1:**
  - **\$7,982,319** to be jointly held with NMED

# Where We Are in the Process

- MMD is nearing completion of reviewing the Little Rock Mine Permit Revision 20-1 Application.
- Today's Public Hearing was requested by the Gila Resources Information Project (GRIP) and others.
- The MMD requirements for holding a Public Hearing are listed in Part 9 of the NM Mining Act Rules (19.10.9.904 NMAC).

# Moving Forward

- This Public Hearing is held for comments and questions from the public.
- MMD will keep a record of the public comments made during the Public Hearing.
- The Hearing Officer will announce how long MMD will accept written comments after the Hearing. The date will be posted on MMD's Website:

*<http://www.emnrd.state.nm.us/MMD/MARP/GR007RERev20-1.html>*

# Moving Forward (continued)

- MMD will review comments received and may ask FMTI to respond to relevant questions and comments.
- FMTI is required to obtain an Environmental Determination from NMED prior to MMD approval of Permit Revision 20-1.
- NMED is processing a renewal of Discharge Permit, DP-1236 for the Little Rock Mine Expansion & updated CCP. NMED and MMD are coordinating the review of the proposed expansion and updated CCP.
- Tyrone will propose Financial Assurance instruments after MMD deems the application technically approvable.



# Document Summary

- This presentation and related documents will be available online at the MMD Website:

*<http://www.emnrd.state.nm.us/MMD/MARP/GR007RERRev20-1.html>*

Written comments related to the application for Revision 20-1 may be submitted to the MMD Director at the following address:

[emnrd.mmd2@state.nm.us](mailto:emnrd.mmd2@state.nm.us)

Enter “Little Rock Mine Expansion & Closeout Plan” in the Subject Line

# Questions and Comments?

Written comments may be sent to MMD at:

[emnrd.mmd2@state.nm.us](mailto:emnrd.mmd2@state.nm.us)

Enter “Little Rock Mine Expansion & Closeout Plan” in  
the Subject Line

Jerry Schoeppner, Director

Mining and Minerals Division

NM Energy, Minerals and Natural Resources Department

1220 South St. Francis Drive

Santa Fe, NM 87505

[Gerard.Schoeppner@state.nm.us](mailto:Gerard.Schoeppner@state.nm.us)