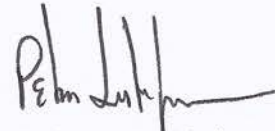


INTERNAL CORRESPONDENCE

 <p>QUIVIRA MINING COMPANY</p> <hr style="width: 100%;"/> <p>(UNIT)</p>	<p>TO A. Gebeau</p> <p>FROM P. Luthiger</p>	<p>DATE October 14, 1992</p> <p>SUBJECT Section 22 Reclamation Report</p>
---	---	---

Attached is the current status report on the reclamation activities for Quivira Mining Company's Section 22 mine. A contractor (Nielson) was hired to perform earthwork to cover the mine waste pads/piles along with any known 'hot spots' surrounding the mine site.



Peter Luthiger

xc: B. Ferdinand
file

SECTION 22 MINE
RECLAMATION REPORT

Reclamation activities at Quivira Mining Company's Section 22 consisted of covering all known contaminated areas on the mine property with clean alluvium. The work was performed by a contractor (Nielson) experienced in similar projects. All contractor personnel received safety training from Quivira employees; consisting of hazard training and radiation safety training.

Reclamation Activities

Activities consisted of placing uncontaminated alluvial cover over all areas that exceeded the unrestricted use radiation levels (57 uR/hr + 20 uR/hr background). Work at Section 22 was initiated on August 17, 1992; with activities completed on August 26, 1992. The total time of reclamation encompassed five (5) days.

Appendix A contains an aerial photograph showing the Section 22 mine site area prior to reclamation activities.

Material Movement

Reclamation activities at Section 22 primarily required the covering contaminated areas with uncontaminated material and recontouring the area.

The total quantity of material that was used to cover the contaminated areas was calculated to be approximately 50,000 cubic yards.

$$\frac{50,000 \times 27}{43560} = 31 \text{ Acres}$$

Rp 12-29-11

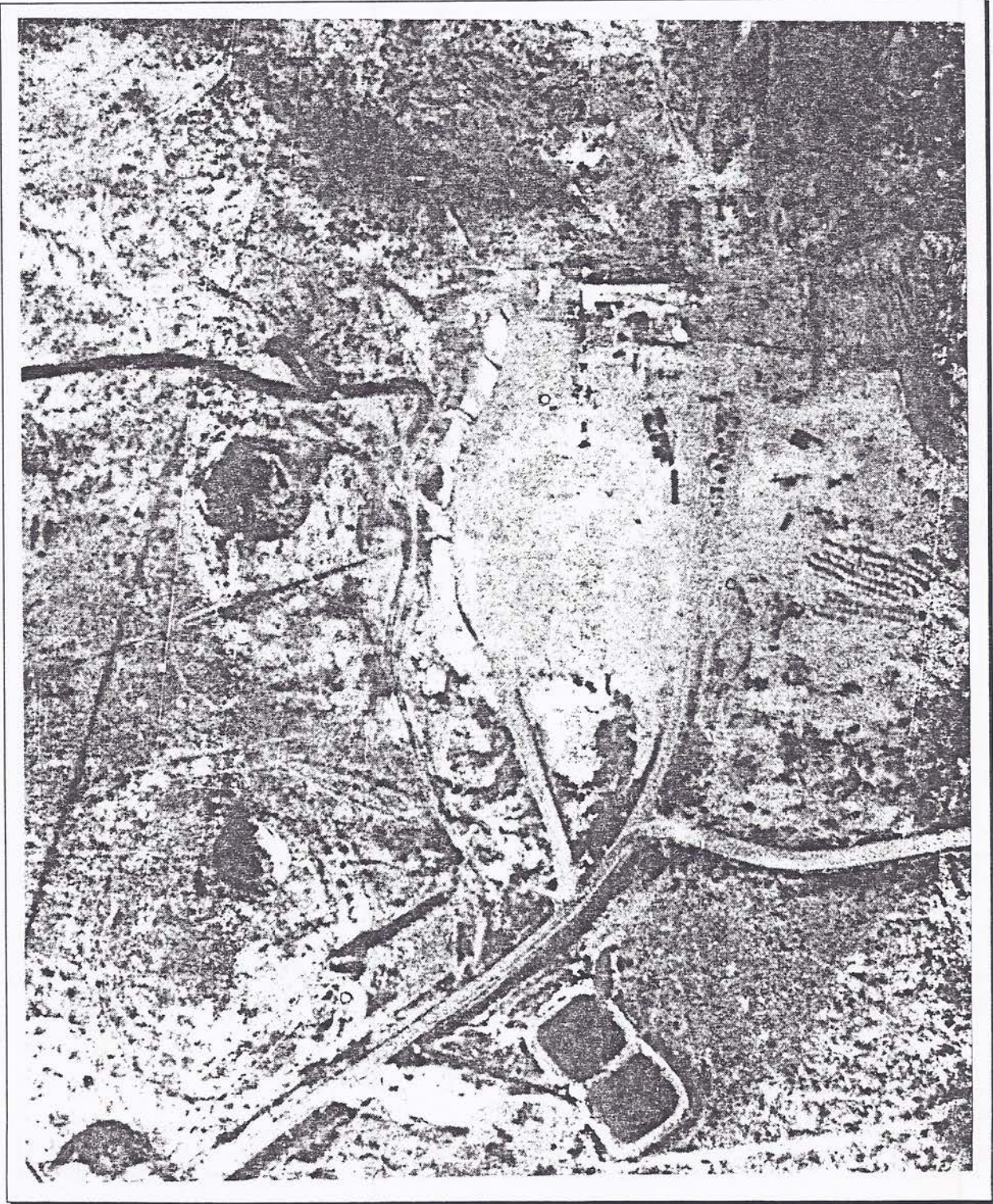
Radiation Surveys

Radiation surveys were performed as reclamation activities progressed. Gamma radiation readings were taken on a 50 foot grid pattern on all disturbed areas at the mine site, with all radiation levels taken down to a cut-off limit of 57 microrem per hour (uR/hr) or less excluding background radiation (20 uR/hr). The 57 uR/hr corresponds to the maximum allowable radiation level which will comply with the annual radiation limit for the general public (0.5 rem per year). All locations resulting in readings above 57 uR/hr exclusive of background were marked for further cleanup and then resurveyed. Appendix B contains the survey results for the areas reclaimed by the contractor. No activity was conducted in the immediate vicinity where the mine buildings and shaft were and the subsidence pit north of the shaft due to potential future use of the area.

APPENDIX A

Aerial Photograph - Section 22

QUIVIRA MINING COMPANY
Section 22 Mine





APPENDIX B


Radiation Survey Results

QUIVIRA MINING COMPANY

Section 22 Radiation Survey (Above Background)

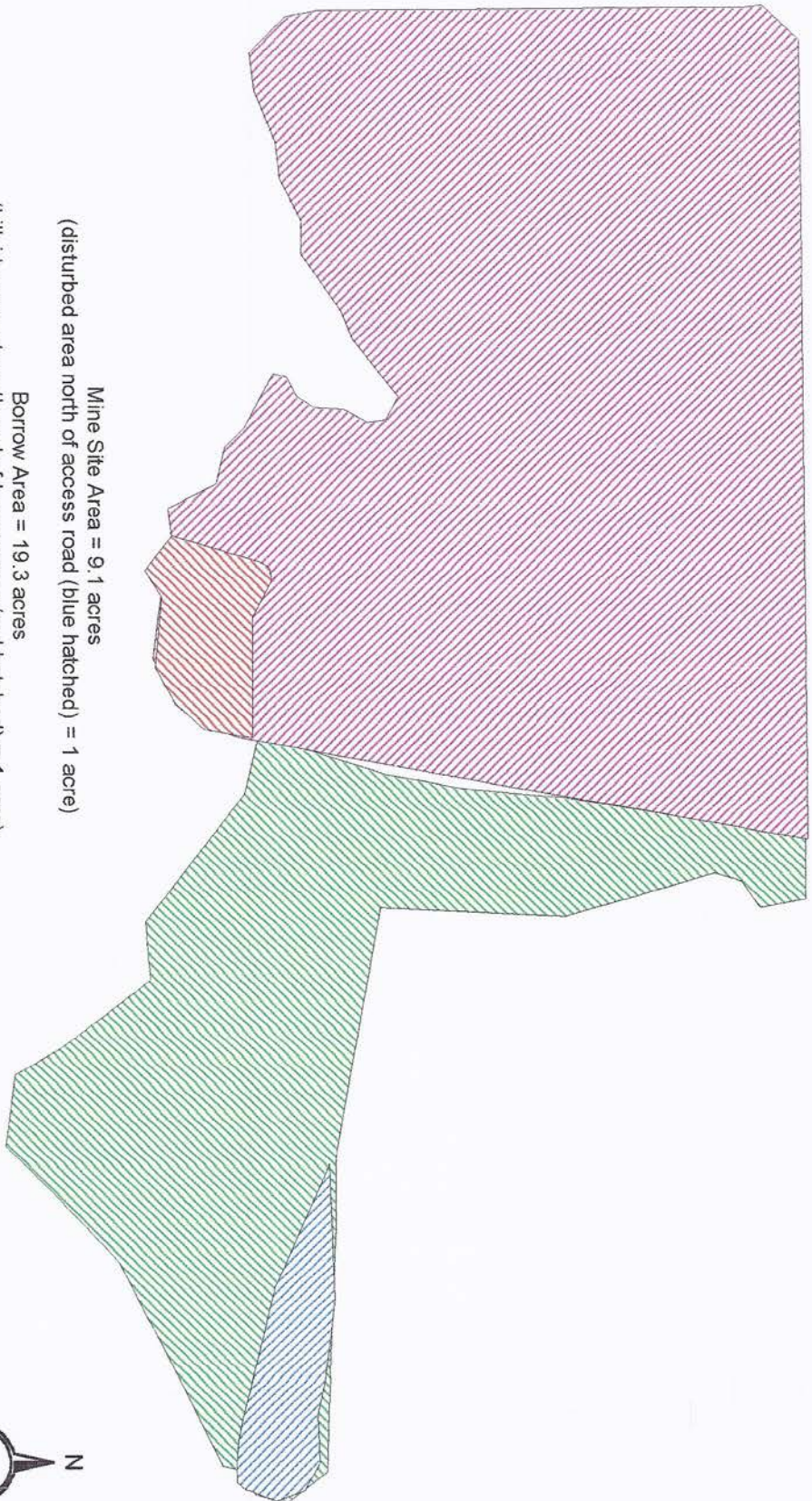
 Less than 5 microrem per hour (uR/hr)

 6 uR/hr to 30 uR/hr

 31 uR/hr to 57 uR/hr

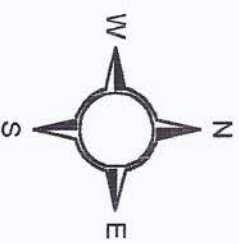


SECTION 22 MINE SITE



Mine Site Area = 9.1 acres
(disturbed area north of access road (blue hatched) = 1 acre)

Borrow Area = 19.3 acres
(hillside area at south end of borrow area (red hatched) = 1 acre)



May 20, 2002