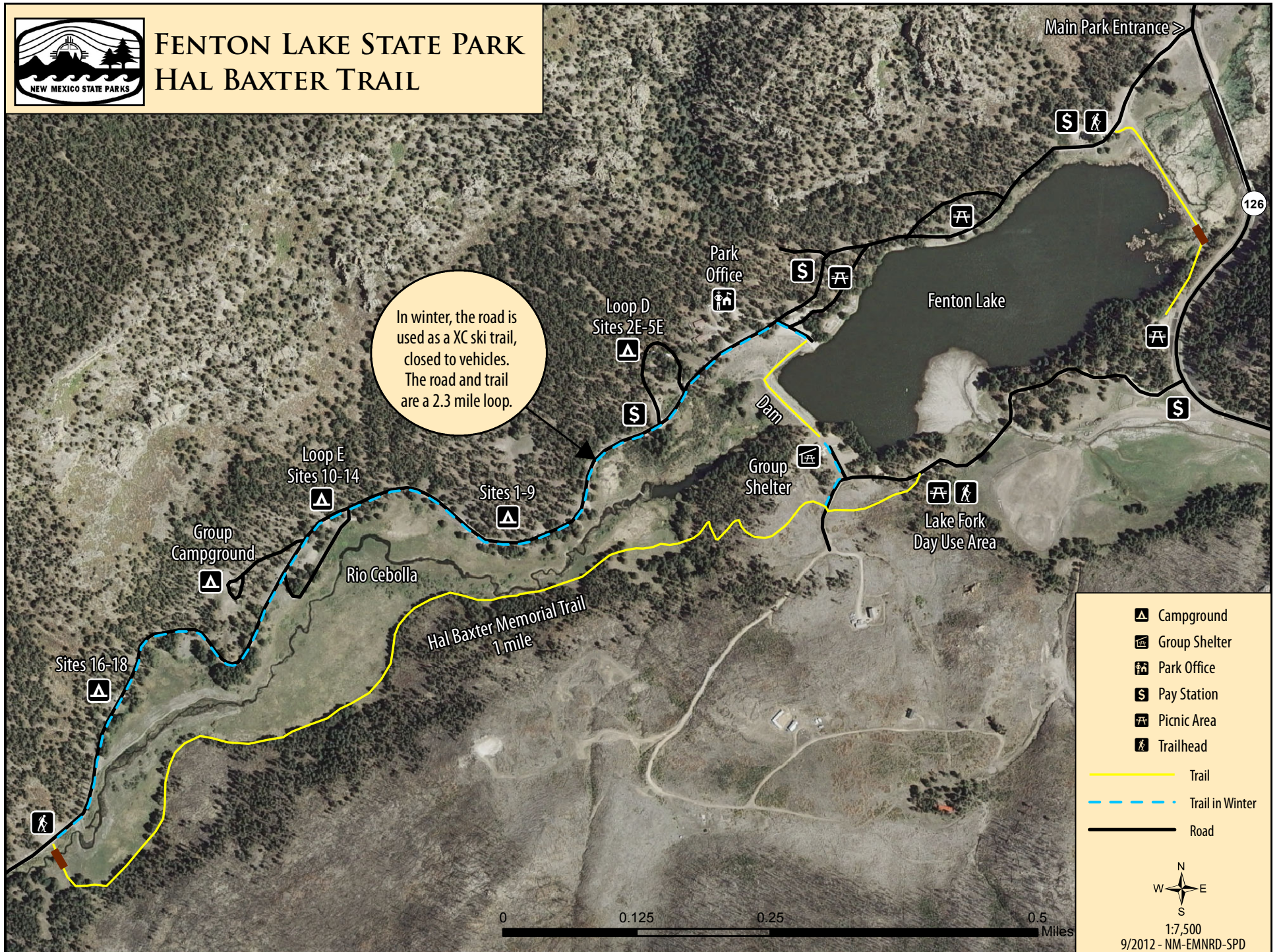




FENTON LAKE STATE PARK

HAL BAXTER TRAIL



In winter, the road is used as a XC ski trail, closed to vehicles. The road and trail are a 2.3 mile loop.

- Campground
- Group Shelter
- Park Office
- Pay Station
- Picnic Area
- Trailhead
- Trail
- Trail in Winter
- Road

1:7,500
 9/2012 - NM-EMNRD-SPD

